

www.nurteks.com.tr

NURTEKS

HER YERE YAKIŞIR

LOOKS GOOD EVERYWHERE



NURTEKS

NURTEKS HALI 1972 YILINDA SUNİ ÇİM ÜRETİMİ İLE BAŞLADIĞI TUFT HALI ÜRETİMİNİ, 2000 YILINDA DUVARDAN DUVARA HALI ÜRETİMİ İLE DAHA GENİŞ BİR ALANA YAYMIŞTIR. 2010 YILINDA YATIRIMLARINI GENİŞLETEN **NURTEKS** 25.000 METREKARELİK FABRİKASINA EK OLARAK 60.000 METREKARELİK İKİNCİ BİR ÜRETİM TESİSİ KURARAK ZIMMER MARKALI SON TEKNOLOJİYE SAHİP CHROMOJET BASKI HATTI İLE BİRLİKTE DUVARDAN DUVARA HALI ÜRETİMİNDE BÜYÜK PROJELERE İMZA ATMANIN İLK ADIMINI ATMIŞTIR. **NURTEKS**, MOODY INTERNATIONAL TARAFINDAN ONAYLI ISO 9001-2000 VE TSE KALİTE BELGELERİNİN YANI SIRA ÜRÜN KULLANIM ALANINA ÖZEL SERTİFİKALARI İLE KALİTE KONUSUNDA MÜŞTERİLERİNE İHTİYAÇ DUYDUKLARI ÖZELLİKLERDE HALILAR SUNMAYI HEDEFLERKEN SUNDUĞU YENİ KOLLEKSİYONLARI VE GELİŞTİRDİĞİ ÜRÜNLERİ 50'DEN FAZLA ÜLKEYE İHRAÇ ETMEYİ DE BAŞARMIŞTIR.

BY BEGINNING TUFTING CARPET PRODUCTION WITH ARTIFICIAL GRASS IN 1972 **NURTEKS** CARPET HAS EXPANDED THE CARPET MANUFACTURING WITH WALL TO WALL CARPETS SINCE 2000. EXPANDING ITS INVESTMENTS IN 2010 NURTEKS CARPET HAS ESTABLISHED A SECOND PRODUCTION FACILITY ON 60.000 SQUARE METERS AREA IN ADDITION TO ITS 25.000 SQUARE METERS FIRST PLANT. AND HAS STARTED TO TAKE ROLE IN BIG PROJECTS WITH ITS NEW CHROMOJET PRINTED WALL TO WALL CARPET PRODUCTION LINE WHICH HAS THE LATEST TECHNOLOGY BY ZIMMER.

NURTEKS MEETS THE NEEDS OF ITS CUSTOMERS WITH THE PRODUCTS THAT HAVE ISO 9001-2000 AND TSE CERTIFICATES CERTICATED BY MOODY INTERNATIONAL IN ADDITION TO SPECIFIC CERTIFICATES FOR THEIR AREA OF USAGE.

ON THE OTHER HAND, NURTEKS HAS SUCCEEDED TO EXPORT ITS CARPETS TO MORE THAN 50 COUNTRIES WITH ITS UP TO DATE COLLECTIONS AND PROFESSIONALLY DEVELOPED PRODUCTS.

BASKILI KONTRAT HALILAR

NURTEKS KONTRAT HALILARI; ÖZEL OLARAK TASARLANMIŞ KALİTE, DESEN, RENKLERLE VE CHROMOJET™ TEKNOLOJİSİYLE ÜRETİLİR. BU KAPSAMDA, STANDART ÜRETİMLERDEN ÇOK FARKLI VE ÜST KALİTEDEKİ POLYAMİDE 6 VE POLYAMİDE 6.6 ESASLI HAMMADDELER KULLANILMAKTADIR. NURTEKS TASARIM DEPARTMANI; PROJELERİN İHTİYAÇLARINI DİKKATE ALARAK, METRAJ (ÖLÇÜ) HESAPLARI, KULLANIM AMACINA UYGUN ÜRÜN KALİTESİNİN BELİRLENMESİ, DESEN VE RENK SEÇİMLERİ VB. ETÜDLERİ HAZIRLAR, ANALİZ EDER VE PROJELERE ÖZEL ÇÖZÜMLER SUNAR. NURTEKS HALI A.Ş.'NİN KONTRAT MÜŞTERİLERİ YUKARIDA İFADE EDİLMEMEYE ÇALIŞILAN TÜM AVANTAJLARDAN VE TEKNİK DETAYLARDAN YARARLANMA ŞANSINA SAHİPTİR. ÖZGÜN DESEN VE RENKLERDEN OLUŞAN GENİŞ ÜRÜN YELPAZEMİZ, DENEYİMLİ UYGULAMA EKİPLERİMİZ, ASLA TAVİZ VERMEDİĞİMİZ TITİZ VE KALİTELİ HİZMET ANLAYIŞIMIZ EN ÖNEMLİ FARKIMIZDIR.

PRINTED CONTRACT CARPETS

NURTEKS CONTRACT CARPETS: NURTEKS CONTRACT CARPETS ARE PRODUCED WITH SPECIALLY DESIGNED QUALITY, PATTERN, COLORS AND CHROMOJET™ PRINTING TECHNOLOGIES. WITHIN THIS CONTEXT, IT PERFORMS THE MANUFACTURE OF CONTRACT CARPETS BASED ON POLYAMIDE 6 AND POLYAMIDE 6.6 WHICH ARE VERY DIFFERENT FROM STANDARD PRODUCTION AND AT A VERY HIGH QUALITY BY USING CHROMOJET™. OUR DESIGN TEAM PREPARES THE QUANTIFY CALCULATIONS, DETERMINATION OF PRODUCT QUALITY ACCORDING TO THE INTENDED USE, PATTERN AND COLOR SELECTION ETC. STUDIES BY TAKING THE PROJECT NEEDS INTO THE CONSIDERATION AND PROVIDES SPECIFIC SOLUTIONS TO THE PROJECTS FOLLOWING THE PROPER ANALYZES. THE CUSTOMERS OF NURTEKS CARPET HAVE THE OPPORTUNITY OF USING ALL ADVANTAGES AND TECHNICAL DETAILS SPECIFIED ABOVE. OUR WIDE RANGE OF PRODUCT WHICH IS COMPOSED OF ORIGINAL PATTERNS AND COLORS, EXPERIENCED APPLICATION TEAMS, PRECISE AND QUALITY SERVICE UNDERSTANDING WHICH WE MAKE NEVERCONCESSIONS OF ARE OUR MOST IMPORTANT DIFFERENCES.



VIP

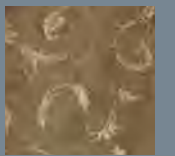


TEKNİK ÖZELLİKLER / TECHNICAL SPECIFICATIONS

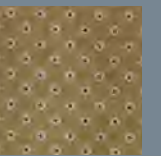
ÜRÜN CİNSİ / TYPE OF PRODUCT	WALL TO WALL CHROMOJET PRINTED / CUT PILE METHOD
HAV MALZEMESİ / PILE MATERAIL	%100 POLYAMIDE
İÇNE ARALIĞI / GAUGE	1/10 INCH, CUT PILE
HAV YÜKSEKLİĞİ / PILE HEIGHT	5 MM
TOPLAM YÜKSEKLİK / TOTAL HEIGHT	8 MM (APPROX)
İKİNCİ TABAN / SECONDARY BACK	KEÇE TABAN / FELT BACKING
YÜZEY KORUYUCU / SURFACE PROTECTION	NURTEKS CARPET PROTECTOR®
TOPLAM AĞIRLIK / TOTAL WEIGHT	1850 GR/M²



VIP 300



VIP 301



VIP 302



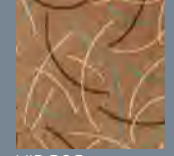
VIP 303



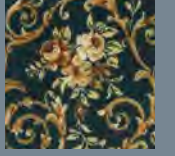
VIP 304



VIP 305



VIP 306



VIP 307



VIP 308

BASKILI YOLLUK



PRINTED RUNNERS

TEKNİK ÖZELLİKLER / TECHNICAL SPECIFICATIONS

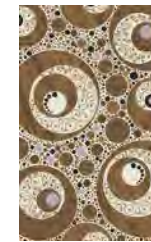
DESEN GRUBU / DESIGN GROUP	BASKILI YOLLUK / PRINTED RUNNER
ÜRETİM METODU / PRODUCTION METHOD	TUFTING LOOP PILE
HAV İPLİĞİ / PILE YARN	%100 POLYAMİD
İĞNE ARALIĞI / GAUGE	1/10 INCH
TOPLAM YÜKSEKLİK (MM) / TOTAL PILE HEIGHT (MM)	4.5 MM
SIRT KAPLAMA / COATING	JEL TABAN / GEL BACKING
TOPLAM AĞIRLIK (GR/M ²) / TOTAL WEIGHT (GR/M ²)	1075 (GR/M ²)
RENK SAYISI / COLOUR NUMBER	-
YERDEN ISITMA / UNDERFLOOR HEATING	UYGUNDUR / ACCEPTABLE
TOLERANS / TOLERANCE	-+ %5



ACER



DALGA



EMEL



NARIN



NAZ GRİ



YAKAMOZ FUSYA



YAKAMOZ VİZON



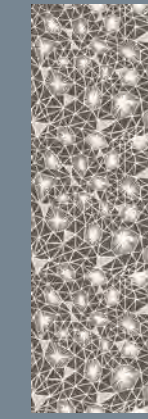
İSTANBUL GRİ



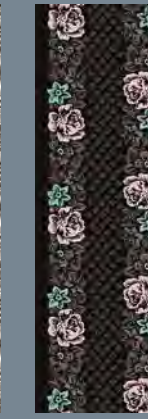
101



102



103



104



105



106



107



108

NEW

VELOUR



SON DERECE KONFORLU VE YÜKSEK AĞIRLIK GEREKTİRMEYEN MEKÂNLARDA DAHA YUMUŞAK BİR SUNUM SAĞLAMAK İSTENDİĞİNDE EN EKONOMİK ÇÖZÜM OLARAK PROJELERİNİZDE KULLANABİLİRSİNİZ.

WHEN YOU WANT TO PROVIDE A VERY COMFORTABLE AND SOFTER PRESENTATION IN THE PLACE WHERE HEAVY WEIGHT IS NOT REQUIRED, YOU CAN USE IN YOUR PROJECTS AS MOST ECONOMICAL SOLUTION.

TEKNİK ÖZELLİKLER / TECHNICAL SPECIFICATIONS

ÜRÜN CİNSİ / TYPE OF PRODUCT	WALL TO WALL CHROMOJET PRINTED/CUT PILE METHOD
HAV MALZEMESİ / PILE MATERAIL	%100 POLYAMIDE
İĞNE ARALIĞI / GAUGE	1/10 INCH, CUT PILE
İKİNCİ TABAN / SECONDARY BACK	KEÇE TABAN / (FELT BACKING) / ACTION BACK
YÜZEY KORUYUCU / SURFACE PROTECTION	NURTEKS CARPET PROTECTOR®

HAV YÜKSEKLİĞİ / PILE HEIGHT	5 MM
TOPLAM YÜKSEKLİK / TOTAL HEIGHT	7 MM (APPROX)
TOPLAM AĞIRLIK / TOTAL WEIGHT	1350 GR / M ²

HAV YÜKSEKLİĞİ / PILE HEIGHT	7 MM
TOPLAM YÜKSEKLİK / TOTAL HEIGHT	9 MM (APPROX)
TOPLAM AĞIRLIK / TOTAL WEIGHT	1500 GR / M ²



BAHAR



TEKNİK ÖZELLİKLER / TECHNICAL SPECIFICATIONS

DESEN GRUBU / DESIGN GROUP	BAHAR
ÜRETİM METODU / PRODUCTION METHOD	TUFTING CUT PILE
HAV İPLİĞİ / PILE YARN	POLYESTER
İĞNE ARALIĞI / GAUGE	3/8 INCH
TOPLAM YÜKSEKLİK (MM) / TOTAL PILE HEIGHT (MM)	3.5 MM
SIRT KAPLAMA / COATING	P.U.
TOPLAM AĞIRLIK (GR/M ²) / TOTAL WEIGHT (GR/M ²)	3000 (GR/M ²)
RENK SAYISI / COLOUR NUMBER	6
YERDEN ISITMA / UNDERFLOOR HEATING	UYGUNDUR / ACCEPTABLE
TOLERANS / TOLERANCE	-+ %5

ÇOCUK HALILARI



KID CARPETS

TEKNİK ÖZELLİKLER / TECHNICAL SPECIFICATIONS

DESEN GRUBU / DESIGN GROUP	ÇOCUK HALILARI / KID CARPETS
ÜRETİM METODU / PRODUCTION METHOD	TUFTING LOOP PILE
HAV İPLİĞİ / PILE YARN	POLYAMİD
İĞNE ARALIĞI / GAUGE	1/10 INCH
TOPLAM YÜKSEKLİK (MM) / TOTAL PILE HEIGHT (MM)	4.5 MM
SIRT KAPLAMA / COATING	KEÇE / FELT
TOPLAM AĞIRLIK (GR/M ²) / TOTAL WEIGHT (GR/M ²)	1170 (GR/M ²)
RENK SAYISI / COLOUR NUMBER	6
YERDEN ISITMA / UNDERFLOOR HEATING	UYGUNDUR / ACCEPTABLE
TOLERANS / TOLERANCE	-+ %5





CAMİ



MOSQUE



TEKNİK ÖZELLİKLER / TECHNICAL SPECIFICATIONS

DESEN GRUBU / DESIGN GROUP	CAMİ / MOSQUE
ÜRETİM METODU / PRODUCTION METHOD	WALL TO WALL CHROMOJET PRINTED/CUT PILE METHOD
HAV İPLİĞİ / PILE YARN	%100 POLYAMİDE
İĞNE ARALIĞI / GAUGE	1/10 INCH, CUT PILE
HAV YÜKSEKLİĞİ / PILE HEIGHT	10,5 MM
TOPLAM YÜKSEKLİK / TOTAL HEIGHT	13,5 MM & 12,5 MM (APPROX)
İKİNCİ TABAN / SECONDARY BACK	KEÇE TABAN / (FELT BACKING) / ACTION BACK
YÜZEY KORUYUCU / SURFACE PROTECTION	NURTEKS CARPET PROTECTOR®
TOPLAM AĞIRLIK / TOTAL WEIGHT	2900 & 2750 GR/M²



0412D0477V1 0512D0592V1 0512D0592V2

0312D0464V1 0613DA56V4 0613DA56V6



%100 POLİPROPİLEN / 100% POLYPROPYLENE

AVANTAJ



TEKNİK ÖZELLİKLER / TECHNICAL SPECIFICATIONS

DESEN GRUBU / DESIGN GROUP	AVANTAJ
ÜRETİM METODU / PRODUCTION METHOD	TUFTING LOOP PILE
HAV İPLİĞİ / PILE YARN	PP BCF
İĞNE ARALIĞI / GAUGE	1/10 INCH
TOPLAM YÜKSEKLİK (MM) / TOTAL PILE HEIGHT (MM)	5.5 MM
SIRT KAPLAMA / COATING	KEÇE / FELT
TOPLAM AĞIRLIK (GR/M ²) / TOTAL WEIGHT (GR/M ²)	1270 (GR/M ²)
RENK SAYISI / COLOUR NUMBER	8
YERDEN ISITMA / UNDERFLOOR HEATING	UYGUNDUR / ACCEPTABLE
TOLERANS / TOLERANCE	- + %5



MARATON



TEKNİK ÖZELLİKLER / TECHNICAL SPECIFICATIONS

DESEN GRUBU / DESIGN GROUP	MARATON
ÜRETİM METODU / PRODUCTION METHOD	TUFTING LOOP PILE
HAV İPLİĞİ / PILE YARN	PP BCF
İĞNE ARALIĞI / GAUGE	1/10 INCH
TOPLAM YÜKSEKLİK (MM) / TOTAL PILE HEIGHT (MM)	5 MM
SIRT KAPLAMA / COATING	KEÇE / FELT
TOPLAM AĞIRLIK (GR/M ²) / TOTAL WEIGHT (GR/M ²)	1350 (GR/M ²)
RENK SAYISI / COLOUR NUMBER	10
YERDEN ISITMA / UNDERFLOOR HEATING	UYGUNDUR / ACCEPTABLE
TOLERANS / TOLERANCE	- + %5

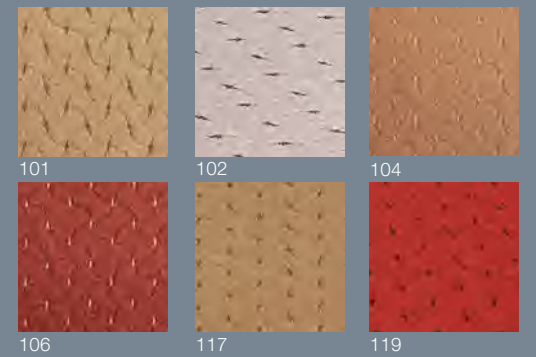


PUZZLE



TEKNİK ÖZELLİKLER / TECHNICAL SPECIFICATIONS

DESEN GRUBU / DESIGN GROUP	PUZZLE
ÜRETİM METODU / PRODUCTION METHOD	TUFTING LOOP PILE
HAV İPLİĞİ / PILE YARN	PP BCF
İÇNE ARALIĞI / GAUGE	1/10 INCH
TOPLAM YÜKSEKLİK (MM) / TOTAL PILE HEIGHT (MM)	4 - 5,5 MM
SIRT KAPLAMA / COATING	KEÇE / FELT
TOPLAM AĞIRLIK (GR/M ²) / TOTAL WEIGHT (GR/M ²)	1375 (GR/M ²)
RENK SAYISI / COLOUR NUMBER	4
YERDEN ISITMA / UNDERFLOOR HEATING	UYGUNDUR / ACCEPTABLE
TOLERANS / TOLERANCE	-+ %5



WINDOW



TEKNİK ÖZELLİKLER / TECHNICAL SPECIFICATIONS

DESEN GRUBU / DESIGN GROUP	WINDOW
ÜRETİM METODU / PRODUCTION METHOD	TUFTING LOOP PILE
HAV İPLİĞİ / PILE YARN	PP BCF
İĞNE ARALIĞI / GAUGE	1/10 INCH
TOPLAM YÜKSEKLİK (MM) / TOTAL PILE HEIGHT (MM)	4.5 - 6.5 MM
SIRT KAPLAMA / COATING	KEÇE / FELT
TOPLAM AĞIRLIK (GR/M ²) / TOTAL WEIGHT (GR/M ²)	1380 (GR/M ²)
RENK SAYISI / COLOUR NUMBER	4
YERDEN ISITMA / UNDERFLOOR HEATING	UYGUNDUR / ACCEPTABLE
TOLERANS / TOLERANCE	- + %5



GOBLEN



TEKNİK ÖZELLİKLER / TECHNICAL SPECIFICATIONS

DESEN GRUBU / DESIGN GROUP	GOBLEN
ÜRETİM METODU / PRODUCTION METHOD	TUFTING LOOP PILE
HAV İPLİĞİ / PILE YARN	PP
İĞNE ARALIĞI / GAUGE	1/10 INCH
TOPLAM YÜKSEKLİK (MM) / TOTAL PILE HEIGHT (MM)	4 - 6 MM
SIRT KAPLAMA / COATING	KEÇE / FELT
TOPLAM AĞIRLIK (GR/M ²) / TOTAL WEIGHT (GR/M ²)	1350 (GR/M ²)
RENK SAYISI / COLOUR NUMBER	7
YERDEN ISITMA / UNDERFLOOR HEATING	UYGUNDUR / ACCEPTABLE
TOLERANS / TOLERANCE	- + %5



KARO



TEKNİK ÖZELLİKLER / TECHNICAL SPECIFICATIONS

DESEN GRUBU / DESIGN GROUP	KARO
ÜRETİM METODU / PRODUCTION METHOD	TUFTING LOOP PILE
HAV İPLİĞİ / PILE YARN	PP BCF
İĞNE ARALIĞI / GAUGE	1/10 INCH
TOPLAM YÜKSEKLİK (MM) / TOTAL PILE HEIGHT (MM)	4.5 - 5.5 MM
SIRT KAPLAMA / COATING	KEÇE / FELT
TOPLAM AĞIRLIK (GR/M ²) / TOTAL WEIGHT (GR/M ²)	1270 (GR/M ²)
RENK SAYISI / COLOUR NUMBER	4
YERDEN ISITMA / UNDERFLOOR HEATING	UYGUNDUR / ACCEPTABLE
TOLERANS / TOLERANCE	-+ %5

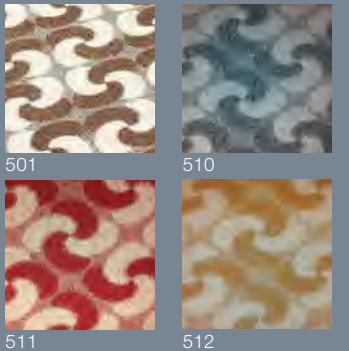


RÜZGAR



TEKNİK ÖZELLİKLER / TECHNICAL SPECIFICATIONS

DESEN GRUBU / DESIGN GROUP	RÜZGAR
ÜRETİM METODU / PRODUCTION METHOD	TUFTING LOOP PILE
HAV İPLİĞİ / PILE YARN	PP BCF
İĞNE ARALIĞI / GAUGE	1/10 INCH
TOPLAM YÜKSEKLİK (MM) / TOTAL PILE HEIGHT (MM)	4.5 - 6.5 MM
SIRT KAPLAMA / COATING	KEÇE / FELT
TOPLAM AĞIRLIK (GR/M ²) / TOTAL WEIGHT (GR/M ²)	1380 (GR/M ²)
RENK SAYISI / COLOUR NUMBER	4
YERDEN ISITMA / UNDERFLOOR HEATING	UYGUNDUR / ACCEPTABLE
TOLERANS / TOLERANCE	-+ %5





PİRAMİT



TEKNİK ÖZELLİKLER / TECHNICAL SPECIFICATIONS

DESEN GRUBU / DESIGN GROUP	PİRAMİT
ÜRETİM METODU / PRODUCTION METHOD	TUFTING LOOP PILE
HAV İPLİĞİ / PILE YARN	PP BCF
İĞNE ARALIĞI / GAUGE	1/10 INCH
TOPLAM YÜKSEKLİK (MM) / TOTAL PILE HEIGHT (MM)	4.5 - 6.5 MM
SIRT KAPLAMA / COATING	KEÇE / FELT
TOPLAM AĞIRLIK (GR/M ²) / TOTAL WEIGHT (GR/M ²)	1500 (GR/M ²)
RENK SAYISI / COLOUR NUMBER	4
YERDEN ISITMA / UNDERFLOOR HEATING	UYGUNDUR / ACCEPTABLE
TOLERANS / TOLERANCE	-+ %5



PARKE



TEKNİK ÖZELLİKLER / TECHNICAL SPECIFICATIONS

DESEN GRUBU / DESIGN GROUP	PARKE
ÜRETİM METODU / PRODUCTION METHOD	TUFTING LOOP & CUT PILE
HAV İPLİĞİ / PILE YARN	PP HS FREEZE
İĞNE ARALIĞI / GAUGE	1/10 INCH
TOPLAM YÜKSEKLİK (MM) / TOTAL PILE HEIGHT (MM)	5 - 7.5 MM
SIRT KAPLAMA / COATING	KEÇE / FELT
TOPLAM AĞIRLIK (GR/M ²) / TOTAL WEIGHT (GR/M ²)	1800 (GR/M ²)
RENK SAYISI / COLOUR NUMBER	3
YERDEN ISITMA / UNDERFLOOR HEATING	UYGUNDUR / ACCEPTABLE
TOLERANS / TOLERANCE	-+ %5



KAPADOKYA

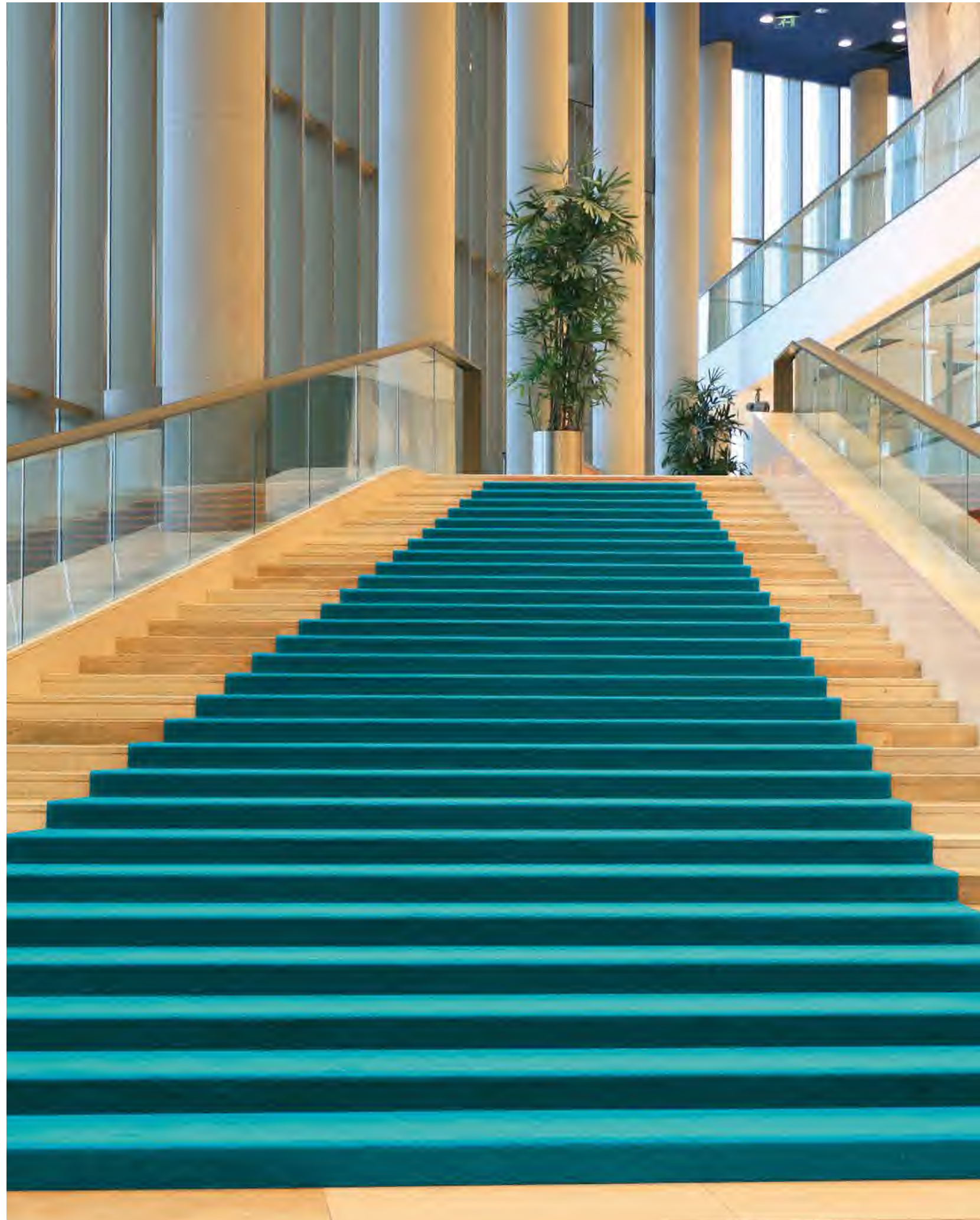


TEKNİK ÖZELLİKLER / TECHNICAL SPECIFICATIONS

DESEN GRUBU / DESIGN GROUP	KAPADOKYA
ÜRETİM METODU / PRODUCTION METHOD	TUFTING CUT PILE
HAV İPLİĞİ / PILE YARN	PP FREEZE
İĞNE ARALIĞI / GAUGE	5/32 INCH
TOPLAM YÜKSEKLİK (MM) / TOTAL PILE HEIGHT (MM)	14 MM
SIRT KAPLAMA / COATING	KEÇE / FELT
TOPLAM AĞIRLIK (GR/M ²) / TOTAL WEIGHT (GR/M ²)	2600 (GR/M ²)
RENK SAYISI / COLOUR NUMBER	6
YERDEN ISITMA / UNDERFLOOR HEATING	UYGUNDUR / ACCEPTABLE
TOLERANS / TOLERANCE	-+ %5



PROKOTOI



TEKNİK ÖZELLİKLER / TECHNICAL SPECIFICATIONS

DESEN GRUBU / DESIGN GROUP	PROTOKOL
ÜRETİM METODU / PRODUCTION METHOD	TUFTING CUT PILE
HAV İPLİĞİ / PILE YARN	PP FREEZE
İÇNE ARALIĞI / GAUGE	5/32 INCH
TOPLAM YÜKSEKLİK (MM) / TOTAL PILE HEIGHT (MM)	10 MM
SIRT KAPLAMA / COATING	KEÇE / FELT
TOPLAM AĞIRLIK (GR/M ²) / TOTAL WEIGHT (GR/M ²)	1850 (GR/M ²)
RENK SAYISI / COLOUR NUMBER	4
YERDEN ISITMA / UNDERFLOOR HEATING	UYGUNDUR / ACCEPTABLE
TOLERANS / TOLERANCE	+ %5



LANDSCAPING

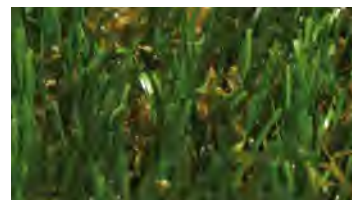


KIŞ 18 mm

EKO BAHAİR 29 mm

NATURAL 33 mm

GARDEN TURF 38 mm

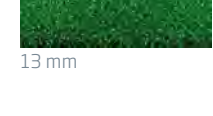
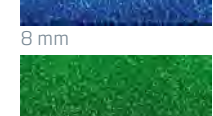
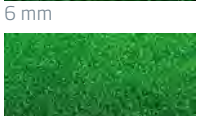
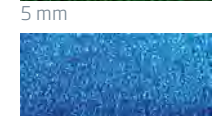


BUTTERFLY 28 mm

PUZZLE 33 mm

DOĞA 50 mm

DEKORASYON



NURTEKS

MERKEZ OFİS / HEAD OFFICE

ISTANBUL - TURKEY

T: +90 212 511 19 86 (PBX)

F: +90 212 519 20 17

E: nurteks@nurteks.com.tr

www.nurteks.com.tr

- Fotoğraf renkleriyle gerçek ürün renkleri arasında farklılık olması kaçınılmazdır. / *The picture may vary in color compare to real products.*
- Nurteks A.Ş.; ürünlerine ait teknik özelliklerde, önceden ilan etmeksizin değişiklik yapabilir. / *Nurteks has right to make changing on the technical specifications of this products without any prior notice.real products.*