

inspired floor
and wallcoverings



CREATIVE MATTERS INC.

532 ANNETTE STREET, TORONTO, CANADA

M6S 2C2 T 416.934.9771 F 416.934.1528

cmi@creativemattersinc.com www.creativemattersinc.com

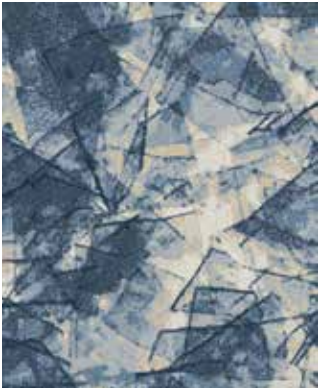
Label STEP Partner – Improving the working and living conditions of weavers

creativemATTERS

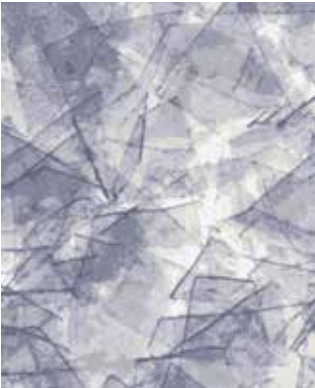
Architexture

AN URBAN FLOORCOVERING COLLECTION

STANDARD SIZES: 6' x 9', 8' x 10', 9' x 12', 10' x 14'
HANDKNOTTED IN NEPAL, MADE WITH TIBETAN WOOL AND CHINESE SILK
CUSTOM COLOURS AND SIZES AVAILABLE FOR ALL



DIVERGENT - BLUE



DIVERGENT - LAVENDER



DIVERGENT - TAUPE



STREETS OF NEW YORK



DUOMO - PATINA



DUOMO - GOLD



LINSEED - CHARTREUSE



LINSEED - RUST

Juxtaposition of history and modernity, depth and dimension, unique interpretation of the beauty in the everyday.

Ten statement designs and colourways exploring the relationship between nature and structure. Embracing inner-city landmarks and incorporating thought-provoking imagery and pattern, this collection gives a new life to oft-overlooked elements of our surroundings.



SCAFFOLD - DAY



SCAFFOLD - NIGHT

inspired floor
and wallcoverings



CREATIVE MATTERS INC.

532 ANNETTE STREET, TORONTO, CANADA

M6S 2C2 **T** 416.934.9771 **F** 416.934.1528

cm@creativemattersinc.com www.creativemattersinc.com

Label STEP Partner – Improving the working and living conditions of weavers

creativEMATTERS

Arashi

AN ENDURING FLOORCOVERING COLLECTION

STANDARD SIZES: 6' x 9', 8' x 10', 9' x 12', 10' x 14'
HANDKNOTTED IN NEPAL, MADE WITH TIBETAN WOOL AND CHINESE SILK
CUSTOM COLOURS AND SIZES AVAILABLE FOR ALL



CRUMPLE



ICHIBAN - COPPER



ICHIBAN - INDIGO



IMPRINT - AQUA



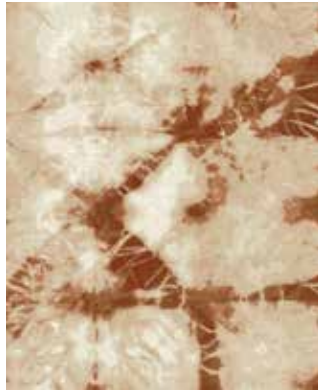
IMPRINT - EARTH



SUJI - FROST



SUJI - GOLD



TWINE - COPPER



TWINE - MINT



VEIL - GREY



VEIL - MINT

**Fluidity and movement,
striking hues, ancient
Japanese craftsmanship
with a modern sensibility.**

Eleven statement designs and colourways inspired by the respected tradition of Shibori - binding, twisting, folding and dyeing fabrics. Earthy colour palettes, restrained design and exploration of textures characterize this timeless collection.

inspired floor
and wallcoverings



CREATIVE MATTERS INC.

532 ANNETTE STREET, TORONTO, CANADA

M6S 2C2 T 416.934.9771 F 416.934.1528

cm@creativemattersinc.com www.creativemattersinc.com

Label STEP Partner – Improving the working and living conditions of weavers

creativematters

ARCTIC

A COOL FLOORCOVERING COLLECTION

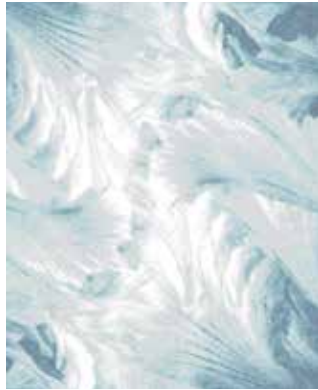
STANDARD SIZES: 6' x 9', 8' x 10', 9' x 12', 10' x 14'
HANDKNOTTED IN NEPAL AND INDIA, MADE WITH TIBETAN WOOL AND CHINESE SILK
CUSTOM COLOURS AND SIZES AVAILABLE FOR ALL



APPARITION - BLUE



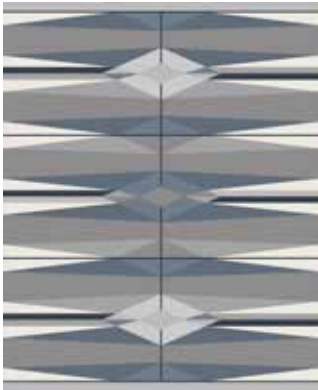
CASCADE - BLUE



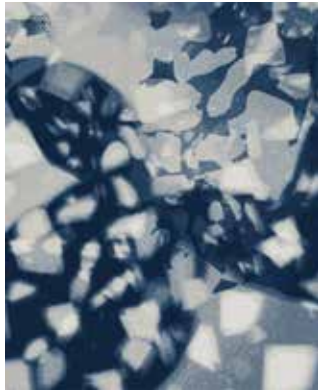
CRYSTALLIZE - BLUE



CRYSTALLIZE - ICE



FACET - GREY



FRAGMENT - BLUE



GLACIER - BLUE



JEWEL - SNOW



SHARD - BLUE



SHATTERED - BLUE



SHIVER - GREY



TOTEM - BLUE

**Ice diamonds,
luminous shards,
swirls of frost.**

Twelve statement designs and colourways inspired by the crystalline formations of the Canadian expanse. The pureness of life captured in a sensorial mix of handspun wool and silk. An ingenious aesthetic expressing the natural idiosyncrasies of frozen water.

inspired floor
and wallcoverings



CREATIVE MATTERS INC.

532 ANNETTE STREET, TORONTO, CANADA

M6S 2C2 T 416.934.9771 F 416.934.1528

cm@creativemattersinc.com www.creativemattersinc.com

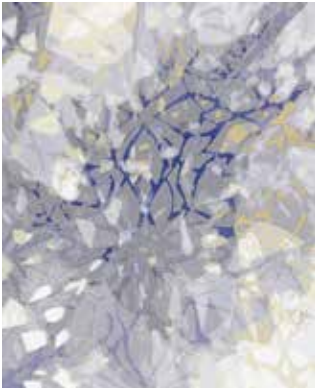
Label STEP Partner – Improving the working and living conditions of weavers

creativematters

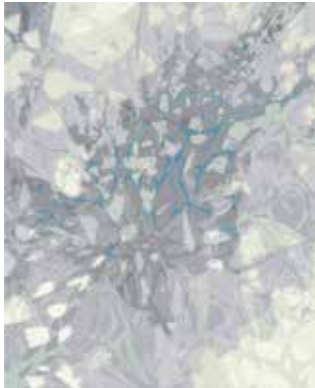
Perennial

A TIMELESS FLOORCOVERING COLLECTION

STANDARD SIZES: 6' x 9', 8' x 10', 9' x 12', 10' x 14'
HANDKNOTTED IN NEPAL, MADE WITH TIBETAN WOOL AND CHINESE SILK
CUSTOM COLOURS AND SIZES AVAILABLE FOR ALL



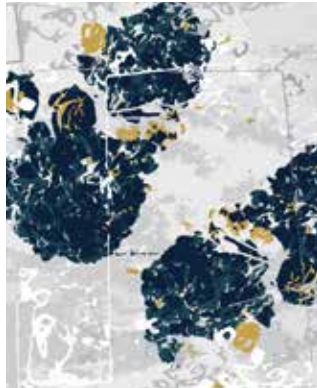
EMERGE - PLUM



EMERGE - SPEARMINT



HYDRANGEA - CHARCOAL



HYDRANGEA - INDIGO



SCATTER - BLUE



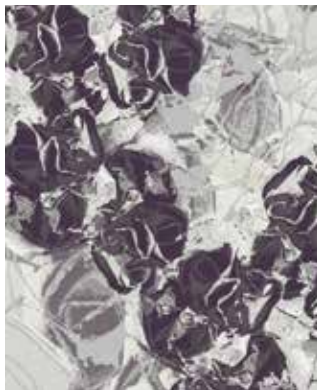
NOUVEAU - OCHRE



ROSE - TECHNICOLOUR



RUCHE - PASTEL



RUCHE - PLUM



SILVERPLATE - PLUM



VIVA - PASTEL



VIVA - OCHRE



VIVA - OLIVE

**Exuberant blooms,
luxuriant petals,
graceful fronds.**

Thirteen statement designs and colourways reflecting the yearning for summer's bounty after Canada's prolonged polar chill. Bold botanicals, masculine florals, bursting with wild abundance yet tamed in the timeless beauty of a handknotted rug.



Introducing the XXV Collection

The 1920s has been described as the decade in which fashion entered the modern era. The 20's and 30's saw flappers, shift dresses, hats for men (fedoras, bowler hats and newsboy caps), and accessories such as elbow length gloves. The art world saw the rise of Surrealism and Art Deco.

When Creative Director Ana Cunningham stumbled upon a stack of vintage Vogue, Harper's Bazaar and Vanity Fair magazines at a garage sale, she bought them immediately. The publication dates range from 1924 - 1940 and their pages are full of stunning artworks, advertisements and fashion.

And it was exactly those magnificent trends from the Roaring Twenties and the 1930s that sparked the creation of Creative Matters' 25th Anniversary Collection. The latest line of luxurious fair trade rug designs captures the essence of the era with the "silver and golden hues yet intricate patterning" that is reminiscent of F. Scott Fitzgerald's "The Great Gatsby."

inspired floor and wallcoverings



CREATIVE MATTERS INC.
532 ANNETTE STREET, TORONTO, CANADA
M6S 2C2 **T** 416.934.9771 **F** 416.934.1528
cmf@creativemattersinc.com www.creativemattersinc.com

Label STEP Partner – Improving the working and living conditions of weavers



COLLECTION XXV

creativematters

STANDARD SIZES: 6' x 9', 8' x 10', 9' x 12', 10' x 14'
HANDKNOTTED IN NEPAL, MADE WITH TIBETAN WOOL AND CHINESE SILK
CUSTOM COLOURS AND SIZES AVAILABLE FOR ALL



DREAM - BLACK



DREAM - BLUE



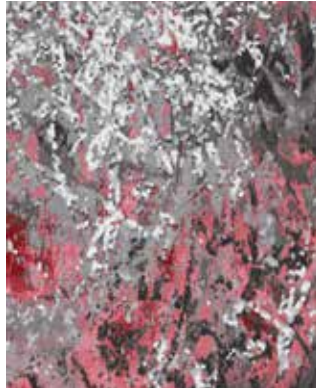
DREAM - BRONZE



DREAM - GOLD & SILVER



DRIFT - AQUA



DRIFT - RASPBERRY



DRIFT - WHEAT



EMPIRE



ORCHESTRA - DARK



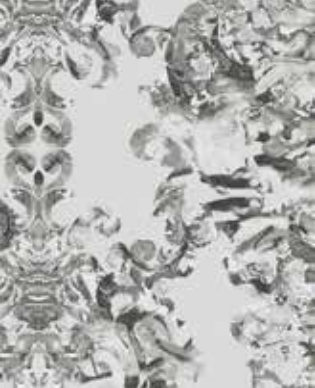
ORCHESTRA - LIGHT



SHALE - GOLD



SHALE - SILVER



DREAM - SILVER



DREAM - VIBRANT



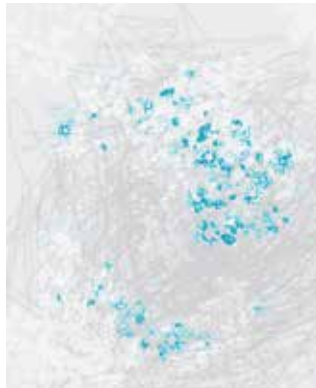
LIGHT ANGEL



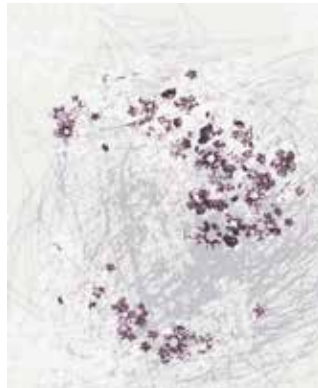
DARK ANGEL



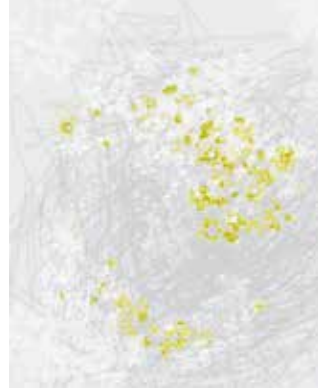
METROPOLIS



FROZEN BLOOM - AQUA



FROZEN BLOOM - PURPLE



FROZEN BLOOM - SOLEIL



SUSPENSION - BLUE



SUSPENSION - GOLD
& SILVER



TWIGGY