

**AUCOPLAN**

**THE COMPLETE INSTRUMENTATION  
AND ELECTRICAL DESIGN  
AND ENGINEERING**



**AUCOPLAN – The successful CAE system for  
planning, documentation and  
support of process I&E plants**

*Let's make engineering easy!*

 **AUCOTEC**

# Ergonomics



## Full I&E

Do you manage the planning of I&E systems? AUCOPLAN offers you an easy way for successful realization of this task. A unique concept for orderly editing is hidden behind the tried and tested "Control Centres", the solution for distinct work with tables and for processing mass data. Depending on the task in question, they offer the optimum view of the basic data. With the control centres, the engineering staff has the possibility to efficiently process both the plant structure to be generated and the entire world of functions, of device, strip and cable editing as well as the wiring with the utmost clarity. Alphanumeric and graphic editing are available on an equal footing and in a consistent manner.

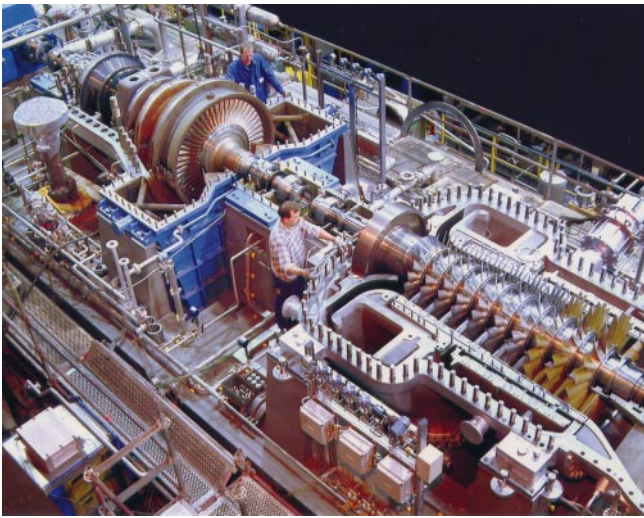




# Referencing

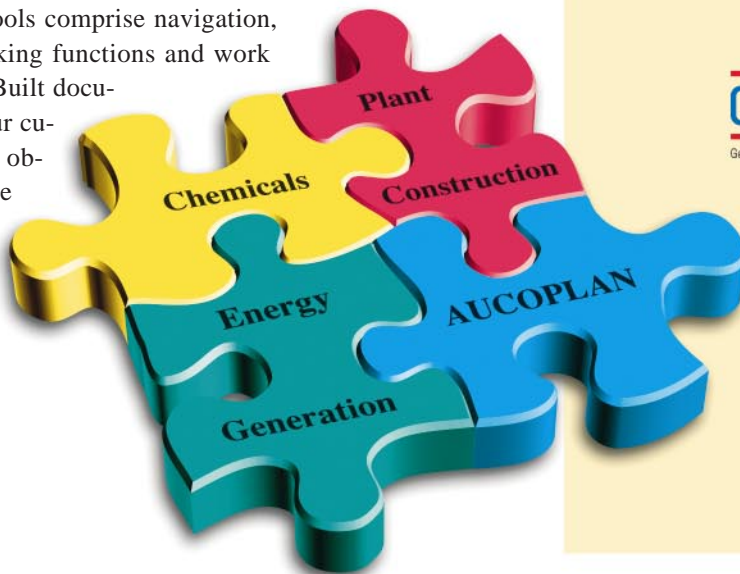
## Your Success with AUCOPLAN

AUCOPLAN represents a highly efficient tool for the planning, documentation and support of process control plants that can be tailored to your special needs independent of the company size or industrial sector. This operational flexibility of course also yields economical benefits since costly investments - such as for special hardware - can be avoided.



The adaptability of our I&E system converts both the smallest engineering office and the largest plant construction company into an efficient, competitive enterprise. To enable you to be ready for operation with AUCOPLAN also on an international level, our CAE system supports you in various ways: with international versions and environmental data conforming to the standards IEC, ISA and JIC.

Global engineering functions only with global information management. Intelligent viewing tools as supplements to the project planning tools comprise navigation, redlining and marking functions and work directly on the AsBuilt documentation. Thus our customers have long obtained competitive advantages in the areas service and maintenance.



**SIEMENS**



**Ticona**



**Honeywell**

**RWE Energie**  
AKTIENGESELLSCHAFT

**DEUTSCHE BABCOCK**



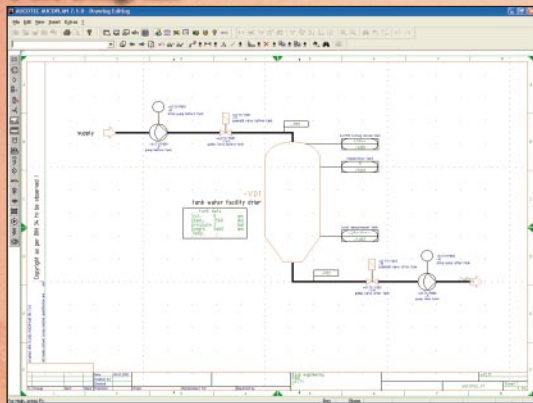
**Controlmatic**  
Gesellschaft für Automation und Elektrotechnik mbH



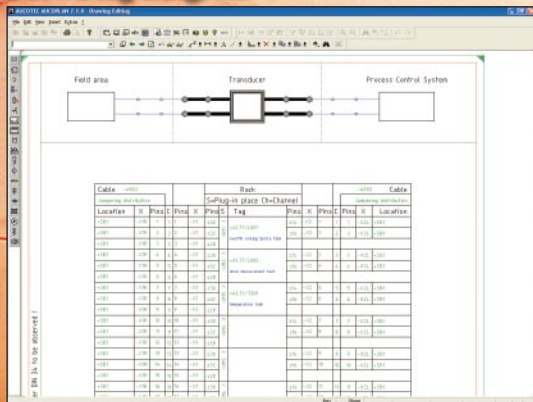
# Complete Documentation Automatically Correct

## BASIC PLANNING

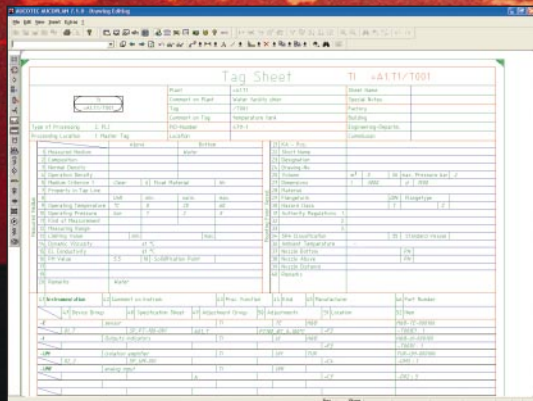
P&I Diagram



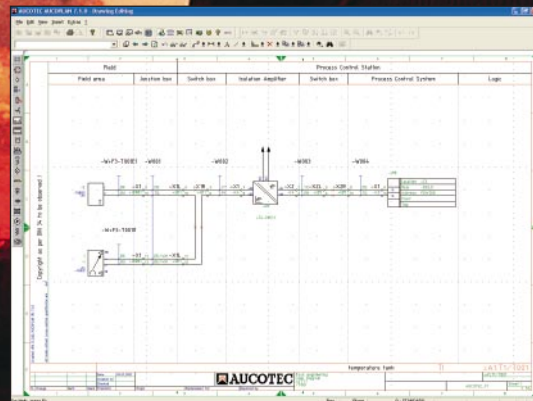
Prewiring Diagram



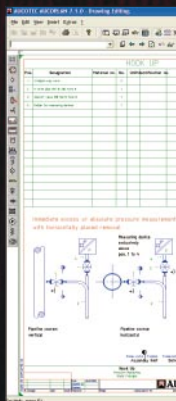
Data Sheet



Loop



Hook Up



Plant

Cost Estimation

Sub-Plant

Operating Unit

Apparatus

Machine

PC&I Tag

Hook Up

Tag Function

Process Connection

Instrumentation

Specification



# DETAIL PLANNING

Building

Floor

Room

Cabinet

Distribution

Device

Cable

Terminal Strip

Channel

Core

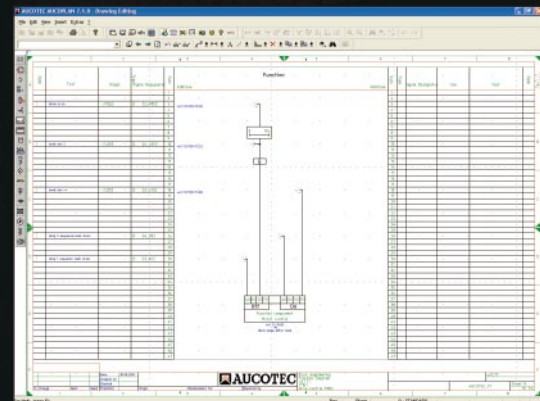
Terminal

Pin

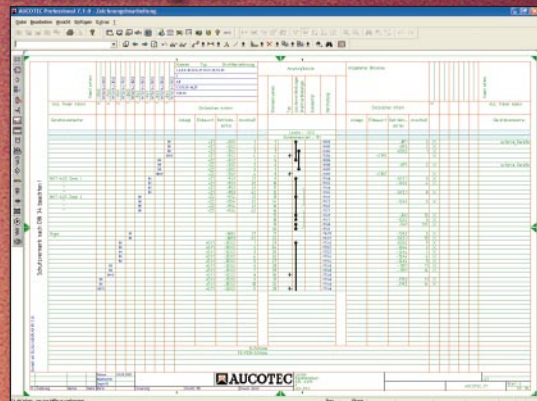
Instrumentations List

ID	Type	Manufacturer	Model Name	Serial Number	Location	Notes
IA001	AI	ABB	AI-1000	123456789	100-1000-001	AI-1000
IA002	AI	ABB	AI-1000	123456789	100-1000-002	AI-1000
IA003	AI	ABB	AI-1000	123456789	100-1000-003	AI-1000
IA004	AI	ABB	AI-1000	123456789	100-1000-004	AI-1000
IA005	AI	ABB	AI-1000	123456789	100-1000-005	AI-1000
IA006	AI	ABB	AI-1000	123456789	100-1000-006	AI-1000
IA007	AI	ABB	AI-1000	123456789	100-1000-007	AI-1000
IA008	AI	ABB	AI-1000	123456789	100-1000-008	AI-1000
IA009	AI	ABB	AI-1000	123456789	100-1000-009	AI-1000
IA010	AI	ABB	AI-1000	123456789	100-1000-010	AI-1000

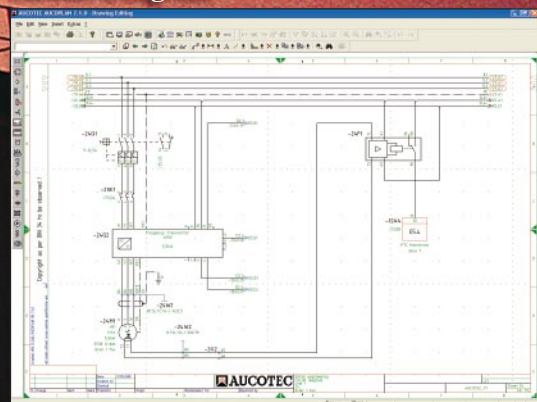
Function Chart



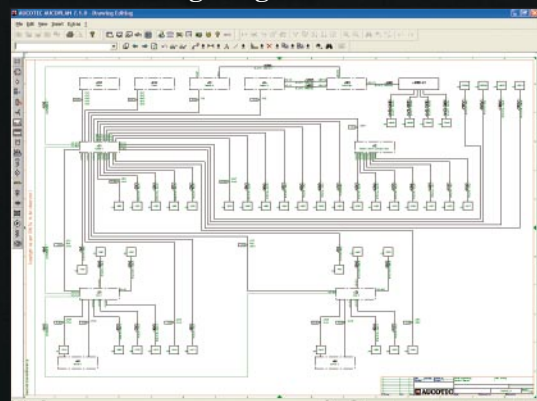
## Terminal Diagram



## Circuit Diagram



## Cable Planning Diagram



# *Highlights*

## **Evolution in Functions - Revolution in Operation**

A comprehensive data model is the basis for a broad integration of all tasks from the acquisition of process engineering data via the complete I&E hardware planning and wiring to the creation of the function diagram.



With AUCOPLAN these demands can be met, as proved by the millions of planned and documented I&E tags of our customers - and that despite the fact that there are no two projects alike! The most varying customizing states and multifarious fields of application of AUCOPLAN speak for themselves: with AUCOPLAN you decide in favour of the certainty to be able to combine your engineering know-how with a leading CAE system.

Moreover, we make it easy for you to set up a special adaptation: The representation of the tables and masks is user defined; attributes of the database can be renamed, added and removed any time according to the wishes of the user. In this way AUCOPLAN as a complete CAE system stands out favourably against half-finished systems that burden the user with database development tools.



# Openness, Integration, SAP

## Openness as a Principle

The usefulness of an I&E planning software essentially depends on the possibility to be integrated into the existing IT environment of your enterprise. The uncompromising openness of the system ascertains your flexibility in project planning. When modelling your method of operation, you are not restricted but supported in the continuation of your previous working practice. AUCOPLAN has been designed from the start as a software tool meant to be integrated so that the data exchange with upstream, parallel and downstream software products (e.g. INTERGRAPH-PDS, SAP R/3, etc.) works in a safe and controlled manner.

## SAP Integration

With its Communication Framework (CF), AUCOTEK offers universal integration of AUCOPLAN with SAP R/3. The CF is independent of release status and can be adjusted to the Company workflow by means of a Basic script.

The standard features:

- Bi-directional adjustment of material master data
- Adjustment of materials and/or order parts lists
- Creation and linking of document info sets for entire CAE projects or individual documents
- Reciprocal processing of I&E tags (CAE) and technical places (SAP)

CF is based on the current SAP technologies (RFC, BAPI, IDoc) as well as on COM.

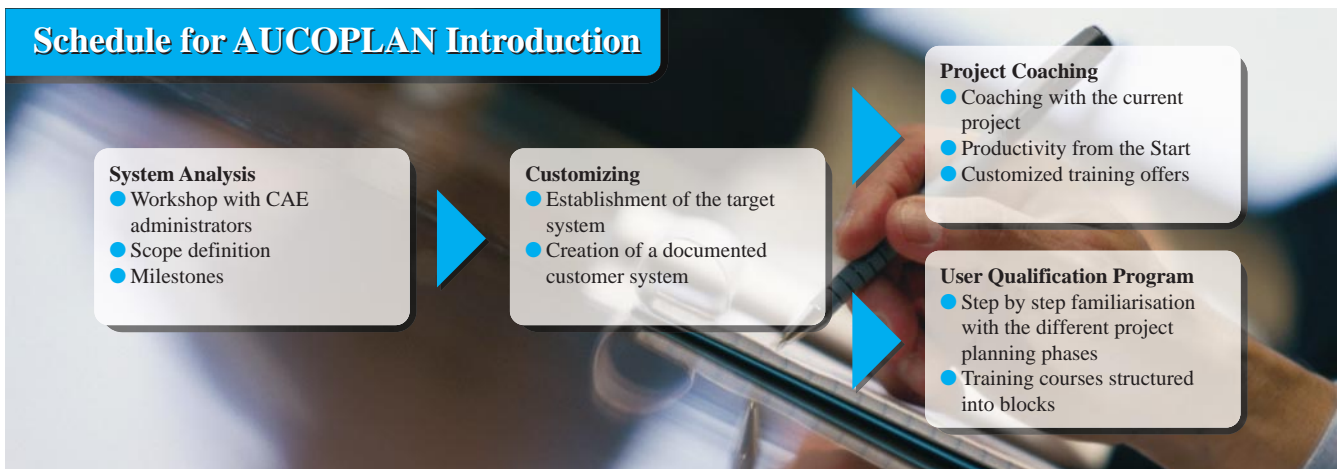
## Principle: Freedom for the User

AUCOPLAN reflects your personal style. All of the information is always up to date, i.e. it is up to you whether you prefer to work directly in the graphic or the tabular representation. You can start working with AUCOPLAN immediately because standard documents, output formats, symbols and master data are supplied. Of course all these elements can be modelled individually according to your specifications. Thus full integration into your company processes is ensured.





# Introduction, Training, Coaching



The success of a product is decided in its beginnings. Whatever you put on the right track will arrive safely. For the introduction of the CAE tool AUCOPLAN we offer you a modular concept that will guide you safely to successful work with AUCOPLAN. You profit from our experience yet always have complete control of the events, because from the start we define the goals together. The aim is to cooperatively work out not the least expensive but the most profitable solution. Corresponding to your situation, the modularity of our concept offers the necessary flexibility to respond to dynamic processes. The success is ensured already for the first projects by clear milestones and cyclic checks.

## System Analysis

The system analysis is the successful start for the introduction of AUCOPLAN. Target group of this process are the key users in the enterprises. The aim of this phase with "Workshop" character is the definition of a project plan with the following contents:

- Creation of your introduction concepts on the basis of our modules
- Common definition of the "Customer System"
- Schedule, resource planning
- Acceptance conditions
- Definition of the deployment concept

## Customizing

Customizing is used for the creation or adaptation of all necessary project planning standards in the company environment. In this introductory phase, the target system determined during system analysis is established: a completely documented system according to your specifications: AUCOTECH undertakes this task in its entirety or carries out the adaptations together with you.

## Project Coaching

With project coaching, the user of the system works productively from the first moment. The project team is stepwise instructed in the use of the new tool AUCOPLAN while carrying out a real project. Solutions for special planning tasks are learned in a flexible manner and tailored to the situation.

## User Qualification Program

Here the staff members are also stepwise made familiar with the use of the tool. Based on realistic tasks taken from your company environment, the user are made familiar with the adapted system. The courses are structured into blocks of maximally 3 days. Project coaching and user qualification program can be carried out optionally and in mixed mode depending on your requirements.

## Your Advantages:

- Productivity from the start
- Structured project plan
- Common establishment of the target system
- Multi-stage introduction process
- Creation of necessary project planning standards by customizing phase
- Possibility to choose between project coaching and user qualification program
- Training on the current or finished project
- Stepwise qualification

Of course there are many more details that will create advantages for you in your specific situation. Let's talk about it, contact us!



AUCOTEC GmbH  
Oldenburger Allee 24 • D-30659 Hanover  
Telephone +49 511 61 03-0  
Telefax +49 511 61 40 74  
[www.aucotec.com](http://www.aucotec.com)