

Status: 11/2018

**cab**  
*we identify more*

Products need labeling  
Label printers  
for industrial applications



**MACH 4S**  
Made in Germany

## Key features



### MACH 4S

Label printers for industrial applications

The **MACH 4S** provide all features of an industrial printer with a wide application range.

The print mechanics and the chassis are made of high-quality materials and perfectly match in terms of shape and function.

The large, colored touchdisplay with self-explanatory symbols offers best operability.

Labels and ribbons are easy to insert from the front.

The centered material guide eliminates any need of adjustments.

The hightech electronic board integrates all the needed interfaces as standard and is ready for any connection.

- reliable and fast printing
- accurate imprint
- compact, appealing design
- easy operation
- little footprint

Sample applications:

#### PCB labels

When only little space is available  
– smallest label size 5 x 5 mm

#### Type plates

Pin sharp fonts, graphics and barcodes  
up to 600 dpi

#### Cardboard box and pallet labels

up to a passage width of 120 mm



## Types



Material guide  
centered



### 1.1 Type B with tear-off edge

for printing on all materials that are wound on rolls or reels or fanfold.

Label printer		MACH 4.3S		MACH 4S	
Printable resolution	dpi	203	300	300	600
Print speed	up to mm/s	250	250	300	150
Print width	up to mm	104	108.4	105.7	105.7

### 1.2 Type P with peel-off function

for printing on all materials that are wound on rolls or reels or fanfold. In addition, the labels can be dispensed.

Label printer		MACH 4.3S		MACH 4S	
Printable resolution	dpi	203	300	300	600
Print speed	up to mm/s	250	250	300	150
Print width	up to mm	104	108.4	105.7	105.7
Label height	from mm	12			

### 1.3 Type C with cutter

for printing on all materials that are wound on rolls or reels or fanfold. From 12 mm in height, the labels and continuous materials can be cut.

Label printer		MACH 4.3S		MACH 4S	
Printable resolution	dpi	203	300	300	600
Print speed	up to mm/s	250	250	300	150
Print width	up to mm	104	108.4	105.7	105.7
Cutting length	from mm	12			
Gap height	up to mm	2.5			
Cuts/min, without material	up to	100			
Stop print job when		final cutter position has not been reached			

## Accessories



### 2.14 External rewriter ER4/210

Label winding is either outside or inside. An adapter kit for exact alignment of the external rewriter is included in the delivery.

External rewriter		ER4/210
Material width	up to mm	120
Roll diameter	up to mm	210
Tightening axle for core diameter	mm	76
Winding		outside or inside

## Details

### 1 Cover with a large panoramic window

It can be opened wide. The integrated damping mechanism provides smooth closing. Label stock is visible at any time.

### 2 Roll holder

The label roll is put onto the holder and, at this, is automatically centered. Materials of different widths can be placed within the box.

### 3 Ribbon holder

The ribbon is pushed onto the spring-mounted holder and is centered by means of a margin stop and the position indication. The insertion in the print mechanics is simple and comfortable.

### 4 Print mechanics

It opens at the push of a button and offers easy access.

### 5 Print heads

All print heads are freely interchangeable. They are automatically detected and calibrated by the CPU. Major data such as running performance, maximum operating temperature and heat energy are directly stored in the print head. The data can be read at the plant.

### 6 Gap sensor

It is arranged for labels or punch marks and end of material as well as for print marks in a centered position. In case of multi-track labels, you can switch to a sensor that is shifted 10 mm to the left.

### 7 Material guide

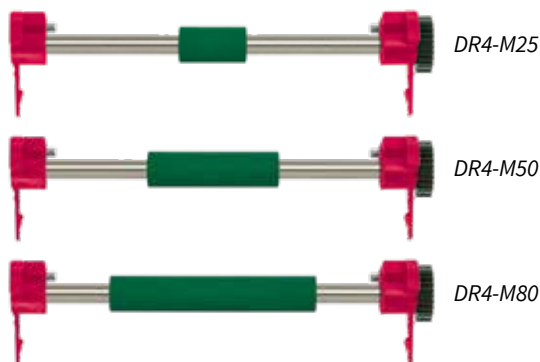
With the lateral retaining wheel the width is adjusted. At this, the labels are automatically centered.

### 8 Reflective sensor

Labels and end of material as well as print marks are identified by the slideable sensor.

### 9 Print roller DR4

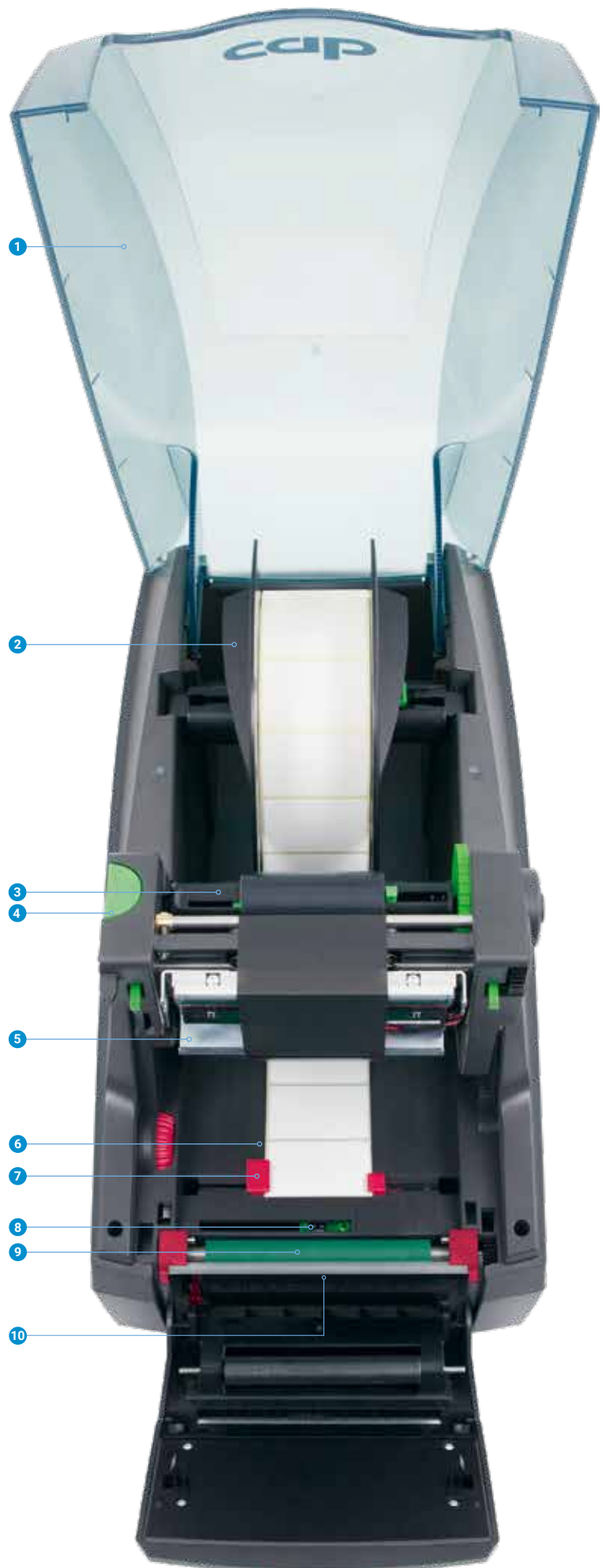
It can be quickly and easily unlocked in few steps for cleaning or replacement. Coating: synthetic rubber



To achieve accurate imprint with slim materials and ribbons slim print rollers are needed. These prevent from print roller wear, print head contamination and errors during material feed.






### 10 Peel-off function (with "P" type)

The carrier tape is lead down behind the operation panel. The label separates from the carrier tape at the peel-off edge.



# Operation panel

**Intuitive and easy operation with self-explanatory symbols to configure the device setups**

- 1 **LED signal:** Power ON
- 2 **Status bar:** Data reception, Record data stream, Ribbon pre-warning, SD memory card / USB memory stick plugged in, Bluetooth, WLAN, Ethernet, USB Slave, Time
- 3 **Printer status:** Ready, Pause, Number of printed labels per print job, Label in peel-off position, Awaiting external start signal
- 4 **Buttons for**  
 Cutter: direct cutting  
 Tear-off or peel-off mode: print the next label
- 5 **Operation**
  -  Jump to menu
  -  Reprint last label
  -  Interrupt and continue print job
  -  Stop and delete all print jobs
  -  Label feed



**Setup options**

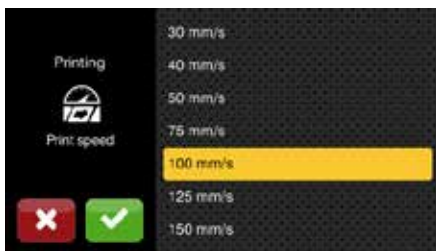


**Printing parameters**



**Print position Y**

Fast setup with a slider,  
fine setup with  $\pm$  keys



**Print speed selection**

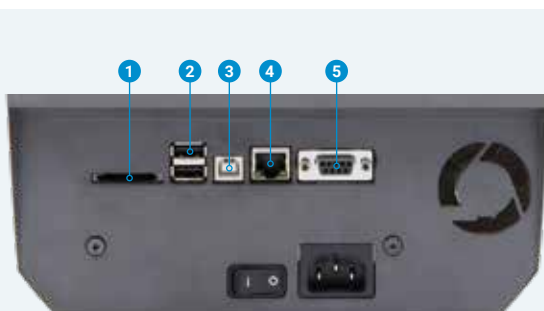
via scroll function



**Video tutorials**

Scan QR code with a mobile device  
and watch the explanatory video

# Interfaces on the back of the device



- 1 for a **SD memory card**
- 2 **2 x USB host** to connect a Service Key, USB memory stick, keyboard, barcode scanner, USB Bluetooth adapter, USB WLAN stick  
WLAN hotspot or infrastructure mode: In hotspot mode it is possible to directly connect a mobile device with the printer via WLAN.
- 3 **USB 2.0 Hi-speed device** to connect a PC
- 4 **Ethernet 10/100 BASE-T**
- 5 **RS232C** 1,200 to 230,400 baud/8 bit

# Technical data

● Typical ○ Possible ■ Standard

Label printer		MACH 4.3S		MACH 4S	
Print head	Application	rough surroundings and thermal direct printing		type plates with small fonts or graphics	
	Characteristic	durable		sharp-edge print image	
Material feed and print head position		centered			
Printing method	Thermal transfer	●	●	●	●
	Thermal direct	●	●	○	-
Printable resolution	dpi	203	300	300	600
Print speed	up to mm/s	250	250	300	150
Print width	up to mm	104	108.4	105.7	105.7
<b>Material<sup>1)</sup></b>					
Paper, cardboard, PET, PE, PP, PI, PVC, PU, acrylate, Tyvec	on	roll, reel, fanfold			
Pressed continuous shrink tubes	on	roll, reel			
Textile tapes	on	roll, reel			
Labels	Width	mm	5 - 116		
	Height without label backfeed	from mm	5		
	peel-off, single cut	from mm	12		
	Maximum height	mm	2,000		
Carrier material	Thickness	mm	0.03 - 0.6		
	Width	mm	9 - 120		
Continuous material	Thickness	mm	0.03 - 0.13		
	Width	mm	5 - 120		
	Weight (cardboard)	up to g/m <sup>2</sup>	0.05 - 0.5		
Shrink tubes	Weight (cardboard)	up to g/m <sup>2</sup>	180		
	Width continuous	mm	5 - 85		
Roll, reel	Thickness	up to mm	1.1		
	Outside diameter	up to mm	205		
	Core diameter	mm	38.1 - 76		
	Winding		outside or inside		
<b>Ribbon<sup>2)</sup></b>					
Ink side			outside or inside		
Roll diameter	up to mm		72		
Core diameter	mm		25.4		
Variable length	up to m		360		
Width	mm		25 - 114		
<b>Printer sizes and weight</b>					
Width x Height x Depth	mm		240 x 317 x 435		
Height when cover is open	mm		596		
Weight	kg		6		
<b>Label sensor with position indication</b>					
Gap sensor	for	labels or punch marks and end of material, print marks in transparent materials			
	Position	centered or shifted 10 mm to the left			
Reflective sensor from below	for	labels and end of material, print marks in not transparent materials			
	Position	adjustable from centre position 56 mm to the left or 10 mm to the right			
Height of material gap	up to mm		2		
<b>Electronics</b>					
Processor 32 bit clock rate	MHz		800		
Main storage (RAM)	MB		256		
Data storage (IFFS)	MB		50		
Slot for SD memory card (SDHC, SDXC)	up to GB		512		
Battery for time and date, real-time clock			■		
Data storage when power is off (e.g. serial numbers)			■		
<b>Interfaces</b>					
RS232C 1,200 to 230,400 baud/8 bit			■		
USB 2.0 Hi-speed device to connect a PC			■		
Ethernet 10/100 BASE-T			LPD, IPv4, RawIP printing, DHCP, HTTP/HTTPS, FTP/FTPS, SMTP, SNMP, TIME, NTP, Zeroconf, SOAP web service, VNC		
2 x USB host on the back of the device for			Service Key, USB memory stick, keyboard, barcode scanner, USB Bluetooth adapter, USB WLAN stick		
Periphery connection for cutter or peel-off function			■		

<sup>1)</sup> The material specifications are standard values. Applications with small labels, very thin, slim, thick and stiff materials as well as labels with a strong adhesive need to be tested. <sup>2)</sup> The ribbon should at least correspond with the width of the carrier material.

# Technical data

■ Standard □ Option

Operating data		
Power supply	100 - 240 VAC, 50/60 Hz, PFC	
Power consumption	Standby <10 W / typical 150 W / max. 300 W	
Temperature / humidity	Operation	+5 - 40°C / 10 - 85 % not condensing
	Storage	0 - 60°C / 20 - 85 % not condensing
	Transport	-25 - 60°C / 20 - 85 % not condensing
Approvals	CE, FCC, CB, cULus, CCC	
Operation panel		
	Touchscreen LCD color display	
Screen diagonal	4.3"	
Resolution pixels W x H	480 x 272	
Setup options		
	Print Labels Ribbon Tear-off Peel-off Cut Interfaces Error	Region: Language Country Keyboard Time zone Time Display: Brightness Power safe mode Orientation Interpreter
Status bar		
	Data reception Record data stream Ribbon pre-warning SD memory card plugged in USB memory stick plugged in	Bluetooth WLAN Ethernet USB Slave Time
Monitoring		
	Ribbon pre-warning End of ribbon End of material Periphery error	Print head tension Print head temperature Print head open
Test routines		
System diagnostics	when device is switched on, including print head detection	
Information display, test printout, analysis	Status printout Fonts list Type overview WLAN status	Test grid Label profile List of events Monitor mode
Status reports	- Printout of system settings, for example print lengths and running times - System status request via software command - Display information of, for example, network error, missing link, barcode error, periphery error, etc.	
Fonts		
Font types internally provided	5 bitmap fonts: 12 x 12 dots 16 x 16 dots 16 x 32 dots OCR-A OCR-B	7 vector fonts: AR Heiti Medium GB-Mono CG Triumvirate Condensed Bold Garuda HanWangHeiLight Monospace 821 Swiss 721 Swiss 721 Bold
to be stored	TrueType fonts	
Character sets	Windows-1250 to -1257 DOS 437, 737, 775, 850, 852, 857, 862, 864, 866, 869 EBCDIC 500 ISO 8859-1 to -10 and -13 to -16 WinOEM 720 UTF-8 MacRoman DEC MCS KOI8-R  Western European Eastern European Chinese simplified Chinese traditional Thai	
		Cyrillic Greek Latin Hebrew Arabic

Fonts		
Bitmap fonts	Size in width and height 1 - 3 mm Zoom factor 2 to 10 Orientation 0°, 90°, 180°, 270°	
Vector / TrueType fonts	Size in width and height 0.9 - 128 mm Variable zoom Orientation 360° in steps of 1°	
Font styles	Bold, italic, underlined, outline, inverse - depending on the font type	
Character spacing	Variable or Monospace for fixed character spacings	
Graphics		
Graphic elements	Lines, arrows, rectangles, circles, ellipses - filled and filled with fading	
Graphic formats	PCX, IMG, BMP, TIF, MAC, GIF, PNG	
Barcodes		
Linear	Code 39, Code 93 Code 39 Full ASCII Code 128 A, B, C EAN 8, 13 EAN/UCC 128/GS1-128 EAN/UPC Appendix 2 EAN/UPC Appendix 5 FIM HIBC	Interleaved 2/5 Ident and routing code of Deutsche Post Codabar JAN 8, 13 MSI Plessey Postnet RSS 14 UPC A, E, E0
2D and stacked	DataMatrix Data Matrix Rectangle Extension QR code Micro QR code GS1 QR code GS1 DataMatrix PDF 417 Micro PDF 417 UPS MaxiCode GS1 DataBar Aztec Codablock F RSS 14 truncated, limited, stacked, stacked omni-directional  All codes are variable as regards height, modular width and ratio; orientations 0°, 90°, 180°, 270°  optional check digit, plain text printout and start / stop code depending on the type of code	
Software		
Label software	cablabel S3 Lite cablabel S3 Viewer cablabel S3 Pro cablabel S3 Print	■ ■ □ □
Running also with	CODESOFT NiceLabel EASYLABEL BarTender	
Stand-alone operation		
WHQL certified Windows printer drivers for	Windows Vista Windows 7 Windows 8 Windows 8.1 Windows 10	Server 2008 Server 2008 R2 Server 2012 Server 2012 R2 Server 2016
Apple Mac OS X printer drivers	from version 10.6	
Linux printer drivers	from CUPS 1.2	
Programming	Printer language JScript abc Basic Compiler	
Integration	SAP Database Connector	
Administration	Printer control Configuration in Intranet and Internet Network Manager (in preparation)	

cab uses Free and Open Source Software within its products.  
For more information see [www.cab.de/opensource](http://www.cab.de/opensource)

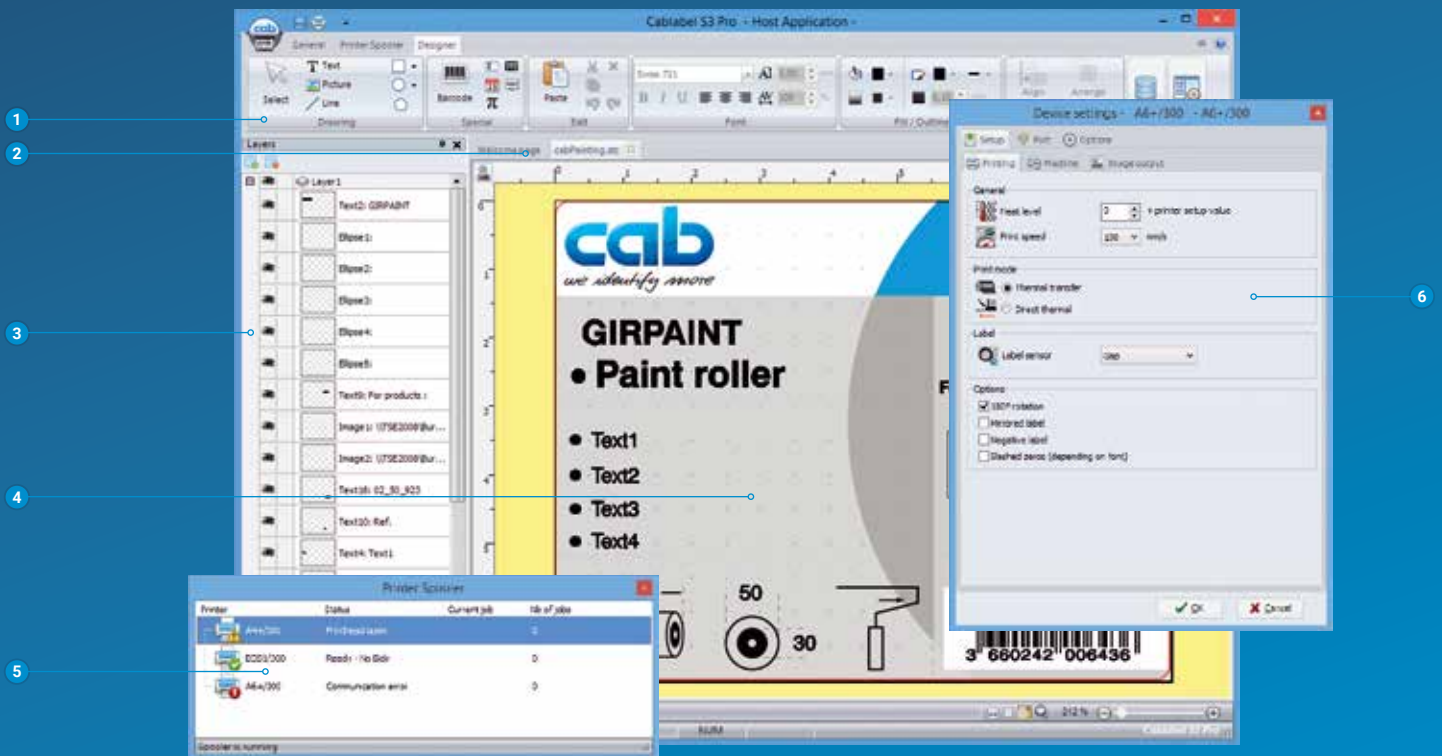
# Label software cablabel S3

## Designing, printing, administrating with cablabel S3

cablabel S3 opens up the full potential of cab devices.

First of all, the label must be designed. Only when it comes to printing it has to be decided whether the label shall be processed on a label printer, a print and apply or marking laser system.

cablabel S3 is of a modular design which makes it adaptable to requirements step by step. To support functions like native JScript programming, elements such as the JScript Viewer are embedded as plug-ins. The designer user interface and the JScript code are synchronized in real time. Special functions like the Database Connector or barcode testers can be integrated.



- 1 **Toolbar**  
to create different label objects
- 2 **Tabs**  
to quickly switch from one running label design to another
- 3 **Layers**  
to administrate different label objects
- 4 **Designer**  
simplifies the design and displays the label WYSIWYG
- 5 **Printer spooler**  
to monitor all print jobs and the state of the printer
- 6 **Drivers**  
for setting and the communication with devices

## Printing in stand-alone operation

This operating mode is the printer's ability to select and print labels even when it is not connected to a host system.

The label has to be designed with a software such as cablabel S3 or by direct programming with a text editor on a PC. Label formats, texts, graphics as well as database contents are stored on a memory card, a USB memory stick or in the internal IFFS memory.

Only variable data are sent to the printer via a keyboard, a barcode scanner, scales or other host systems and/or recalled by the Database Connector from the host and printed.



For further information see  
[www.cab.de/en/cablabe](http://www.cab.de/en/cablabe)





# Printer control and administration

## Printer drivers

To control the printer with a software other than cablabel S3, cab provides drivers in 32 / 64 bit for operating systems starting from Windows Vista, Mac OS 10.6 and Linux with CUPS 1.2.



### Windows<sup>1)</sup> drivers

cab printer drivers are certified according to WHQL. They ensure optimum stability on the Windows operating system.



### Mac OS X<sup>2)</sup> drivers

cab provides CUPS-based printer drivers for Mac OS X applications.



### Linux drivers<sup>3)</sup>

Linux drivers are CUPS-based.

Drivers are offered on the DVD delivered with the printer and for free download at [www.cab.de/en/support](http://www.cab.de/en/support)

## Printer programming



### JScript

To control the printer, cab has developed the embedded programming language JScript. See manual for free download at [www.cab.de/en/programming](http://www.cab.de/en/programming)



### abc Basic Compiler

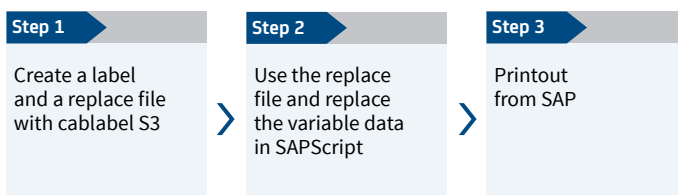
In addition to JScript and as an integral part of the firmware, it allows advanced printer programming before data are sent to printout. For example, external printer languages can be replaced without interfering in the current print job. Also data from other systems such as a scale, a barcode scanner or PLC can be integrated.

## Printer integration



### Printer Vendor Program

As a partner in SAP's<sup>4)</sup> Printer Vendor Program, cab has developed a replace method to enable easy control of a cab printer via SAPScript from SAP R/3. Only variable data are sent to the printer by the host. Pictures and fonts that had priorly been stored in the local memory (IFFS, memory card, etc.) are merged.



<sup>1)</sup> Windows is a registered trademark of Microsoft Corporation

<sup>2)</sup> MAC OS X is a registered trademark of Apple Computer, Inc.

<sup>3)</sup> Only for device series SQUIX (except of SQUIX MT), MACH 4S, EOS, Hermes+ and PX

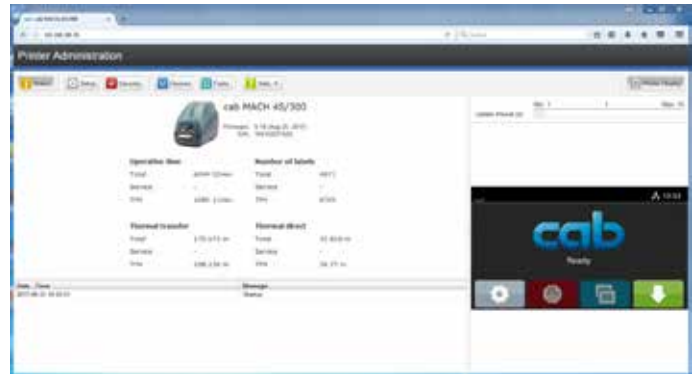
<sup>4)</sup> SAP and all corresponding logos are trademarks or registered trademarks of SAP SE

## Printer administration



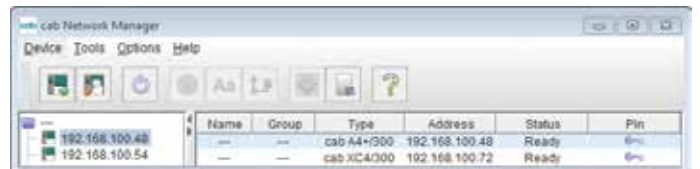
### Configuration in Intranet and Internet

The HTTP and FTP server integrated in the printer via standard programs like a web browser or FTP clients allows printer control and configuration, firmware updates and memory card administration. Via email or SNMP, the SNMP and SMTP client datagram sends status, warning and error messages to administrators and users. Time and date are synchronized by a time server.



### Network Manager in preparation

It is possible to simultaneously manage several printers within the network. Control, configuration, firmware updates, memory card administration, data synchronization and PIN administration are supported from one single location.






### Database Connector


Printers connected to a network may directly access data from a central ODBC or OLEDB-ready database and print it on a label. While printing, data can be rewritten to the database.



# Delivery program

Pos.		Part no.	Printers
1.1		<b>5984630</b>	Label printer MACH 4.3S/200B
		<b>5984631</b>	Label printer MACH 4.3S/300B
	Type B with tear-off edge	<b>5984632</b>	Label printer MACH 4S/300B
		<b>5984633</b>	Label printer MACH 4S/600B
1.2		<b>5984634</b>	Label printer MACH 4.3S/200P
		<b>5984635</b>	Label printer MACH 4.3S/300P
	Type P with peel-off function	<b>5984636</b>	Label printer MACH 4S/300P
		<b>5984637</b>	Label printer MACH 4S/600P
1.3		<b>5984638</b>	Label printer MACH 4.3S/200C
		<b>5984639</b>	Label printer MACH 4.3S/300C
	Type C with cutter	<b>5984640</b>	Label printer MACH 4S/300C
		<b>5984641</b>	Label printer MACH 4S/600C
<b>Scope of delivery:</b>			
<b>DVD:</b>	Label printer		
	Power cable Type E+F, length 1.8 m		
	Connecting cable USB, length 1.8 m		
	Operator's manual DE/EN		
	Operator's manual in 30 languages		
	Configuration manual DE/EN/FR		
	Service manual DE/EN		
	Spare parts list DE/EN		
	Programming manual EN		
	WHQL certified Windows printer drivers for		
	Windows Vista	Server 2008	
	Windows 7	Server 2008 R2	
	Windows 8	Server 2012	
	Windows 8.1	Server 2012 R2	
	Windows 10	Server 2016	
	Apple Mac OS X printer drivers DE/EN/FR		
	Linux printer drivers DE/EN/FR		
	Label software cablabel S3 Lite		
	cablabel S3 Viewer		
	Database Connector		

Pos.		Part no.	Wear parts
2.1		<b>5977382.001</b>	Print head 4.3/200
		<b>5977383.001</b>	Print head 4.3/300
		<b>5977444.001</b>	Print head 4/300
		<b>5977380.001</b>	Print head 4/600
2.2		<b>5984649.001</b>	Print roller DR4
<b>Pos.</b>	<b>Part no.</b>	<b>Extra equipment</b>	
2.3		<b>5984223.001</b>	Print roller DR4-M25
2.4		<b>5984224.001</b>	Print roller DR4-M50
2.5		<b>5984228.001</b>	Print roller DR4-M80

Pos.		Part no.	Extra equipment
2.6		<b>5977370</b>	SD memory card 8 GB
2.7		<b>5977730</b>	USB memory stick 8 GB
2.8		<b>5978912.001</b>	USB WLAN stick 2.4 GHz 802.11b/g/n
2.9		<b>5977731</b>	USB WLAN stick with rod antenna 2.4 GHz 802.11b/g/n + 5 GHz a/n/ac
2.10		<b>5977732</b>	USB Bluetooth adapter
2.11		<b>5550818</b>	Connecting cable RS232 C 9/9 pin, length 3 m
2.12		<b>5984648.001</b>	Roll holder
2.13		<b>5984647.001</b>	Ribbon holder
2.14		<b>5540750</b>	External rewinder ER4/210
<b>Pos.</b>	<b>Part no.</b>	<b>Label software</b>	
11.7		<b>5588000</b>	cablabel S3 Lite
		<b>5588001</b>	cablabel S3 Pro 1 WS
		<b>5588100</b>	cablabel S3 Pro 5 WS
		<b>5588101</b>	cablabel S3 Pro 10 WS
		<b>5588150</b>	cablabel S3 Pro 1 additional licence
		<b>5588151</b>	cablabel S3 Pro 4 additional licences
		<b>5588152</b>	cablabel S3 Pro 9 additional licences
		<b>5588002</b>	cablabel S3 Print 1 WS
		<b>5588105</b>	cablabel S3 Print 5 WS
		<b>5588106</b>	cablabel S3 Print 10 WS
	<b>5588155</b>	cablabel S3 Print 1 additional licence	
	<b>5588156</b>	cablabel S3 Print 4 additional licences	
	<b>5588157</b>	cablabel S3 Print 9 additional licences	
		in preparation	cablabel S3 Print Server
11.10		<b>9009950</b>	Programming manual EN, printed copy

Scopes of delivery, design and technical specifications correspond to the date of the printing. Subject to change. The data provided in the catalog do not represent any warranty or guarantee.



Information is also available on the Internet  
[www.cab.de/en/mach4s](http://www.cab.de/en/mach4s)

# cab product overview

**Label printers MACH1, MACH2**  
in the lower price segment



**Label printers MACH 4S**  
where little space is available



**Label printers EOS2**  
Desktop device for label rolls up to diameter 152 mm



**Label printers EOS5**  
Desktop device for label rolls up to diameter 203 mm



**Label printers SQUIX 2**  
Industrial device for print widths up to 57 mm



**Label printers SQUIX 4**  
Industrial device for print widths up to 108 mm



**Label printers SQUIX 6**  
Industrial device for print widths up to 168 mm



**Label printers A8+**  
Industrial device for print widths up to 216 mm



**Label printers XD4T**  
for double-sided printing



**Label printers XC**  
for two-color printing



**Print and apply systems Hermes+**  
for automation



**Print and apply systems Hermes C**  
for two-color printing and applying



**Print modules PX**  
to be integrated in labeling machines



**Labels**  
made from more than 400 materials



**Ribbons**  
in wax, resin and resin/wax qualities



**Label software cablabel S3**  
Design, print, control



**Label dispensers HS, VS**  
for horizontal or vertical dispense



**Labeling heads IXOR**  
to be integrated in labeling machines



**Marking lasers FL+**  
with output powers 10 to 50 Watt



**Laser marking systems XENO 1**  
for single workpieces and series



Germany  
**cab Produkttechnik GmbH & Co KG**  
Karlsruhe  
Phone +49 721 6626 0  
[www.cab.de](http://www.cab.de)

France  
**cab Technologies S.à.r.l.**  
Niedermodern  
Phone +33 388 722501  
[www.cab.de/fr](http://www.cab.de/fr)

USA  
**cab Technology, Inc.**  
Chelmsford, MA  
Phone +1 978 250 8321  
[www.cab.de/us](http://www.cab.de/us)

Mexico  
**cab Technology, Inc.**  
Juárez  
Phone +52 656 682 4301  
[www.cab.de/es](http://www.cab.de/es)

Taiwan  
**cab Technology Co., Ltd.**  
Taipei  
Phone +886 (02) 8227 3966  
[www.cab.de/tw](http://www.cab.de/tw)

China  
**cab (Shanghai) Trading Co., Ltd.**  
Shanghai  
Phone +86 (021) 6236 3161  
[www.cab.de/cn](http://www.cab.de/cn)

China  
**cab (Shanghai) Trading Co., Ltd.**  
Guangzhou  
Phone +86 (020) 2831 7358  
[www.cab.de/cn](http://www.cab.de/cn)

South Africa  
**cab Technology (Pty) Ltd.**  
Randburg  
Phone +27 11 886 3580  
[www.cab.de/za](http://www.cab.de/za)

**cab // 820 distribution partners in more than 80 countries**

**cab**  
*we identify more*