



航天技术 中航制造



AUTO PARTS ZHONGHANG

Aerospace Technology

慈溪市中航汽车零部件制造有限公司
Cixi Zhonghang Auto Parts Manufacturing Co.,Ltd.

公司简介 Company Introduction

慈溪市中航汽车零部件制造有限公司成立于1996年，是一家专业生产精密冲压件、锻造件、CNC机加工件等金属零件的国内领先厂家，产品主要应用于汽车零部件、航空航天、机械制造等领域。经验丰富的工程师、完善的管理体系、独特的创新精神及良好的团队合作，这些因素促成我们在与以往客户合作中不断超越他们的期待。

我们秉承为客户在产品开发时即为其提供技术支持的理念，在不断的摸索发展中在模具设计及产品制造上具备了较强的实力，同时我们在冲压加工及机加工生产过程中实行完善的过程质量控制，这使得我们成为那些正在寻找支持良好的供应链管理的采购商们完美的合作伙伴。我们的产品主要包括精密CNC加工零件、冲压件、锻件和其他复杂金属零件，主要出口至美国、欧盟、澳大利亚及其他地区，最终客户包括约翰迪尔、沃尔沃、大众、日本小松等国外知名企业。

在行业中摸爬滚打了20多年，使得我们在质量保证体系中积累了宝贵的经验。我们已经通过了ISO9001及ISO/TS16949等相关质量体系认证，所有的这些保证了我们和客户之间的业务不断增长。

我们的使命是在每一个我们方面超过客户对我们的期待，为服务尊贵的客户在所有方面继续追求卓越，因为我们坚信这是在现在高度竞争的环境生存的唯一途径。竭诚欢迎国内外各界人士惠顾，洽谈和广泛合作。





Bolt



ZHBO001
Bolt



ZHBO002
Bolt



ZHBO003
Bolt



ZHBO004
Bolt



ZHBO005
Bolt



ZHBO006
Bolt



ZHBO007
Bolt



ZHBO008
Bolt



ZHBO009
Bolt



ZHBO010
Bolt



ZHBO011
Bolt



ZHBU001
Bushing



ZHBU002
Bushing



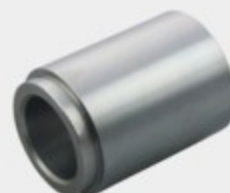
ZHBU003
Bushing



ZHBU004
Bushing



ZHBU005
Bushing



ZHBU006
Bushing



ZHBU007
Bushing



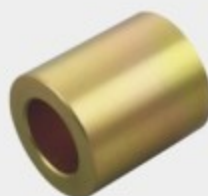
ZHBU008
Bushing



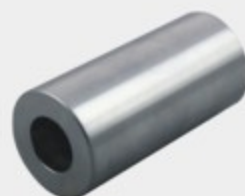
ZHBU009
Bushing



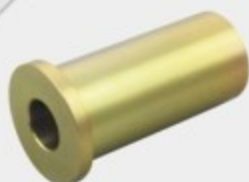
ZHBU010
Bushing



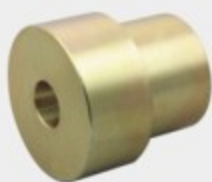
ZHBU011
Bushing



ZHBU012
Bushing



ZHB0013
Bushing



ZHB0014
Bushing



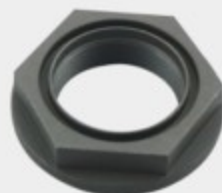
ZHB0015
Bushing



ZHRG001
Ring & Disc



ZHRG002
Ring & Disc



ZHRG003
Ring & Disc



ZHRG004
Ring & Disc



ZHRG005
Ring & Disc



ZHRG006
Ring & Disc



ZHRG007
Ring & Disc



ZHRG008
Ring & Disc



ZHSA001
Shaft



ZHSA002
Shaft



ZHSA003
Shaft



ZHSA004
Shaft



ZHSA005
Shaft



ZHSA006
Shaft



ZHSA007
Shaft



ZHSA008
Shaft



ZHSA009
Shaft



ZHSA010
Shaft



ZHSA011
Shaft



ZHSA012
Shaft



Shaft





ZHSL001
Sleeve



ZHSL002
Sleeve



ZHSL003
Sleeve



ZHSL004
Sleeve



ZHSL005
Sleeve



ZHSL006
Sleeve



ZHSL007
Sleeve



ZHSL008
Sleeve












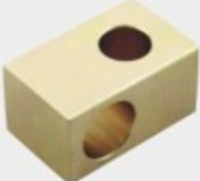

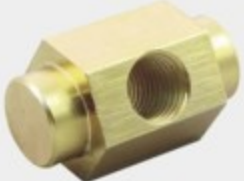
ZHSL009
Sleeve



ZHSL010
Sleeve



ZHSL011
Sleeve

 <p>ZHSM001 Small CNC Parts</p>	 <p>ZHSM002 Small CNC Parts</p>	 <p>ZHSM003 Small CNC Parts</p>
 <p>ZHSM004 Small CNC Parts</p>	 <p>ZHSM005 Small CNC Parts</p>	 <p>ZHSM006 Small CNC Parts</p>
 <p>ZHSM007 Small CNC Parts</p>	 <p>ZHSM008 Small CNC Parts</p>	 <p>ZHSM009 Small CNC Parts</p>
 <p>ZHSM010 Small CNC Parts</p>	 <p>ZHSM011 Small CNC Parts</p>	 <p>ZHSM012 Small CNC Parts</p>



ZHSM013
Small CNC Parts



ZHSM014
Small CNC Parts



ZHSM015
Small CNC Parts



ZHSM016
Small CNC Parts



ZHSM017
Small CNC Parts



ZHSM018
Small CNC Parts



ZHSM019
Small CNC Parts



ZHSM020
Small CNC Parts



ZHSM021
Small CNC Parts



ZHSM022
Small CNC Parts



ZHSM023
Small CNC Parts



ZHSM024
Small CNC Parts



ZHSM025
Small CNC Parts



ZHSM026
Small CNC Parts



ZHSM027
Small CNC Parts



ZHSM028
Small CNC Parts



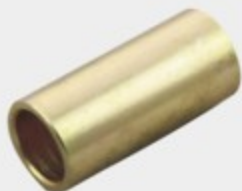
ZHSM029
Small CNC Parts



ZHSM030
Small CNC Parts



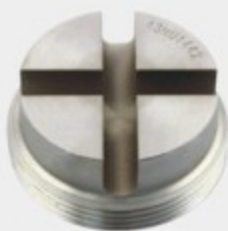
ZHSM031
Small CNC Parts



ZHSM032
Small CNC Parts



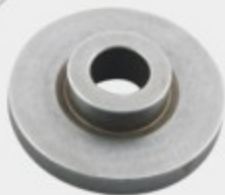
ZHSM033
Small CNC Parts



ZHSM034
Small CNC Parts



ZHSM035
Small CNC Parts



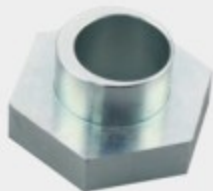
ZHSP001
Spacer



ZHSP002
Spacer



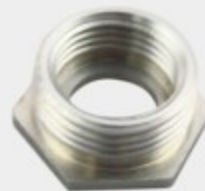
ZHSP003
Spacer



ZHSP004
Spacer



ZHSP005
Spacer



ZHSP006
Spacer



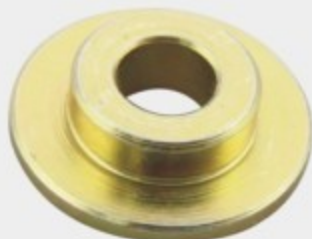
ZHSP007
Spacer



ZHSP008
Spacer



ZHSP009
Spacer



ZHSP010
Spacer



航天技术 中航制造

Established in 1996, Cixi Zhonghang Auto Parts Manufacturing Co., Ltd. is a leading enterprise specializing in metal stamping, forging, CNC machining operations. Our products are widely used in many fields, such as automotive, aerospace, and mechanical engineering. With a group of experienced engineers equipped with strong technical background, sound management system, innovative mind and good team work, we are competent to exceed our customers' expectations in every aspect of our business relationship.

Our concept in customer services starts from the provision of technical support during the product development stage to our valued customers. We are particularly strong in progressive die design and manufacturing, and we use control charts for in-process quality control in the stamping and CNC machining operations. We are professional with the just-in-time manufacturing process that makes us a perfect partner for those who are looking for support in good supply chain management. Our manufacturing products include CNC high precision machining parts, stamping parts, forging parts and other complicated metal parts. We also do assemblies for exporting to America, Europe, Australia and Japan, and final customers include John Deere, Volvo, Volkswagen, Komatsu, and Etc.

With more than 20 years of experience in the manufacturing industry, we have accumulated invaluable knowledge in quality assurance techniques. We have been certified by SGS as an ISO9001 and ISO/TS 16949 certified company. All our efforts have been endorsed by our customers and demonstrated by our continuous business growing year by year.

Our mission is not only to meet, but also to exceed our customers' expectations at the first time on every single item that we supply. We are determined to continue striving for excellence in all aspects of our services to our valued customers, as we firmly believe that it is the only way to survive in today's highly competitive environment.



Tractor Parts



ZHTR001
Tractor Parts



ZHTR002
Tractor Parts



ZHTR003
Tractor Parts



ZHTR004
Tractor Parts



ZHTR005
Tractor Parts



ZHTK001
Truck Parts



ZHTK002
Truck Parts



ZHTK003
Truck Parts



ZHTK004
Truck Parts



ZHTK006
Truck Parts



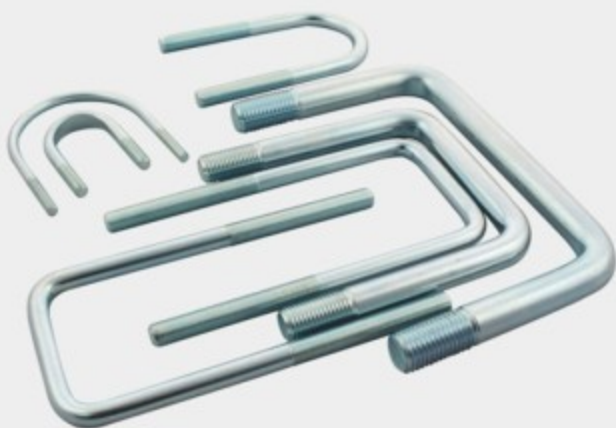
ZHTK005
Truck Parts



ZHTK007
Truck Parts



ZHTK008
Truck Parts



U Bolt



ZHUB001
U Bolt



ZHUB002
U Bolt



ZHUB003
U Bolt



ZHUB004
U Bolt



ZHUB005
U Bolt



ZHUB006
U Bolt



ZHUB007
U Bolt





航天技术 中航制造

Contact Us

慈溪市中航汽车零部件制造有限公司
Cixi Zhonghang Auto Parts Manufacturing Co., Ltd.

GM: Mr. Yang BaoRong
Cell Phone: 086-13800641600
E-mail: zhonghangyang@126.com

Sales Manager: Michael Yang
Cell Phone: 086-18606719531
E-mail: youthtradeyang@126.com

地址：中国·浙江省慈溪市金沙路299号 P.C: 315300
Add: No. 299, Jin Sha Road, Cixi City, Zhejiang Province, China
Tel: 086-574-63810049 Fax: 086-574-63810482

→ F 设备 Facilities →

我们工厂坐落于中国浙江省慈溪市金沙路299号，在2013年新建厂房完工后又增加了1200平方米，使得厂房总面积达到了4500平方米，同时我们也努力继续扩大规模来持续扩大我们的生产能力。

我们的子公司，也是我们的贸易伙伴，杭州扬仕贸易有限公司从事汽配、机械、轴承等产品的贸易进出口，坐落于杭州西子湖畔。

下面是我们工厂的主要设备清单，同时我们也将不断更新产品装备以保证我们能够最大程度满足生产需要。

设备清单：

生产设备	数量	加工精度
数控机床	22	≤0.02
加工中心	2	≤0.01
铣床	3	≤0.02
螺纹切削机床	5	≤0.02
打磨机	5	≤0.02
车床	22	≤0.03
刨床	2	≤0.02
磨床	1	≤0.005
钻床	12	≤0.02
冲床	15	≤0.05
装配线	1	—
电焊设备	3	—

Zhonghang Auto Parts continues to expand...

We are now housed in the facility which at No.299 Jinsha Road Cixi City Zhejiang Province China. To be completed in 2013, we are adding an addition of 1200 m² for a grand total of 4500m². We look forward to the new space as we continue growing our business.

Our sister company, which is our trade partner also, Hangzhou Youth Trade Co., ltd. is located in 1-506 United Plaza No.58 Qianjiang Road Hangzhou City Zhejiang Province China.

We are committed to increasing our capabilities by purchasing the latest equipment to meet the demands of today's technological components.

Equipment List

Manufacturing Facility	Quantity	Precision(mm)
CNC Machine	22	≦0.02
Machining Center	2	≦0.01
Milling Machine	3	≦0.02
Tapping Machine	5	≦0.02
Grinder Machine	5	≦0.02
Lathe Machine	22	≦0.03
Slotting Machine	2	≦0.02
Grinding Machine	1	≦0.005
Drilling Machine	12	≦0.02
Punching Machine	15	≦0.05
Platform	1	—
Electric Welding Machine	3	—



→ Q 质量控制 Quality control

我们特别看重客户对产品质量及规格的特殊要求，以便在初次生产时运用合适的质量控制手段保证产品质量。我们已经通过ISO9001:2008及ISO/TS 16949质量管理体系认证，并且在所有的生产管理过程遵循并执行相应的质量管理体系。

良好的测量仪器及完善的质量控制体系保证和维持了我们在质量管理上达到了一个较好的水准。我们的测量仪器较为完备，包括坐标测量仪、数显测量表、厚度计、维氏硬度计等等，并严格按照标准适时校准以保证准确性。先进的测量仪器和经验丰富的工艺师使得我们持续的提高生产效率及质量管理，并因此不断赢得世界各地的采购客户。

我们的主要测试设备清单：

测试设备	数量	测试设备	数量
维氏硬度检测计	1	数显测量表	3
洛氏硬度检测计	1	材料分析仪	1
三元测定器	1	电子秤	2
厚度计	1	电动恒温炉	1
盐酸腐蚀测定箱	1		

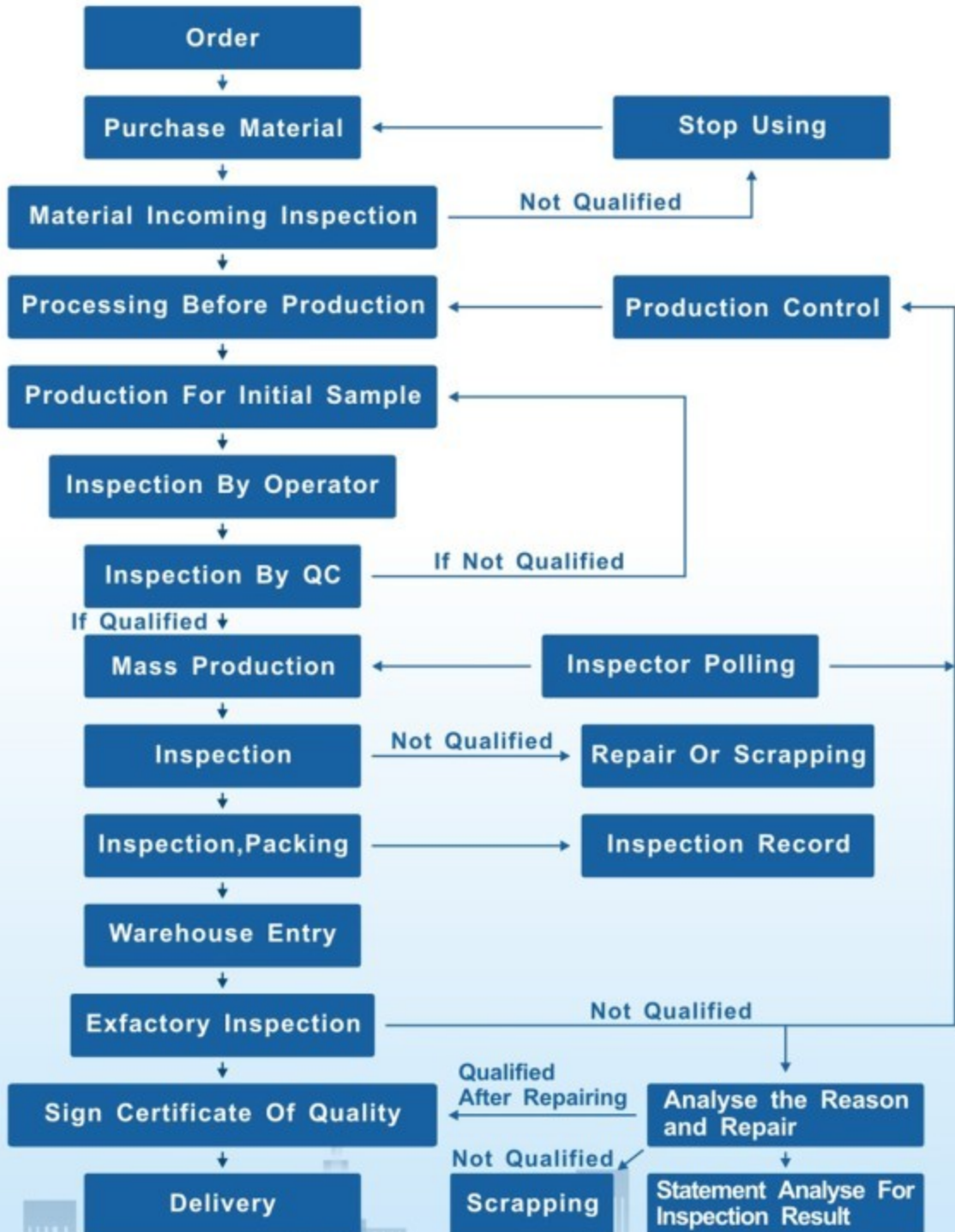
We place an emphasis on understanding the specifications about customer quality requirements, the application of the proper controls and producing the part precisely the first time. We have been certified by SGS as an ISO9001 and ISO/TS 16949 certified company, followed and executed in all of our production process with these quality control systems requires.

A high quality standard is obtained and maintained through our strong quality controls and the measuring instruments. The measuring instrument includes CMM and other regular measuring instruments duly calibrated, Bore Gauges, Thickness Meter, V-Hardness Tester and so on. The most advanced measuring instruments and professional QC engineer are sure to provide global customers with great efficiency and best quality products.

Our Test Equipment List

Inspection Facility	Quantity	Inspection Facility	Quantity
Vickers Hardness Tester	1	Bore Gauges	3
Rockwell Hardness Tester	1	Material Elemental Analysis	1
Coordinate Measuring Machine	1	Electronic Scales	2
Thickness Meter	1	Electric Thermostat Blast Oven	1
Salt-mist Corrosion Tester	1		

QC 流程图 QC flow chart





Black Zinc Plated Parts



Yellow Zinc Plated Parts



Bushing & Sleeve



Small CNC Parts



Auto Distributor Parts



ZHDP001
Auto Distributor Parts



ZHDP002
Auto Distributor Parts



ZHDP003
Auto Distributor Parts



ZHDP004
Auto Distributor Parts



ZHDP005
Auto Distributor Parts



ZHDP006
Auto Distributor Parts



ZHDP007
Auto Distributor Parts



ZHDP008
Auto Distributor Parts



ZHDP009
Auto Distributor Parts