

„The only reason to invest in companies is their ability to innovate“ *Jeffrey Immelt, CEO General Electric*

innovation

PLM, Project Management and Collaboration: From Ideas to Successful Products

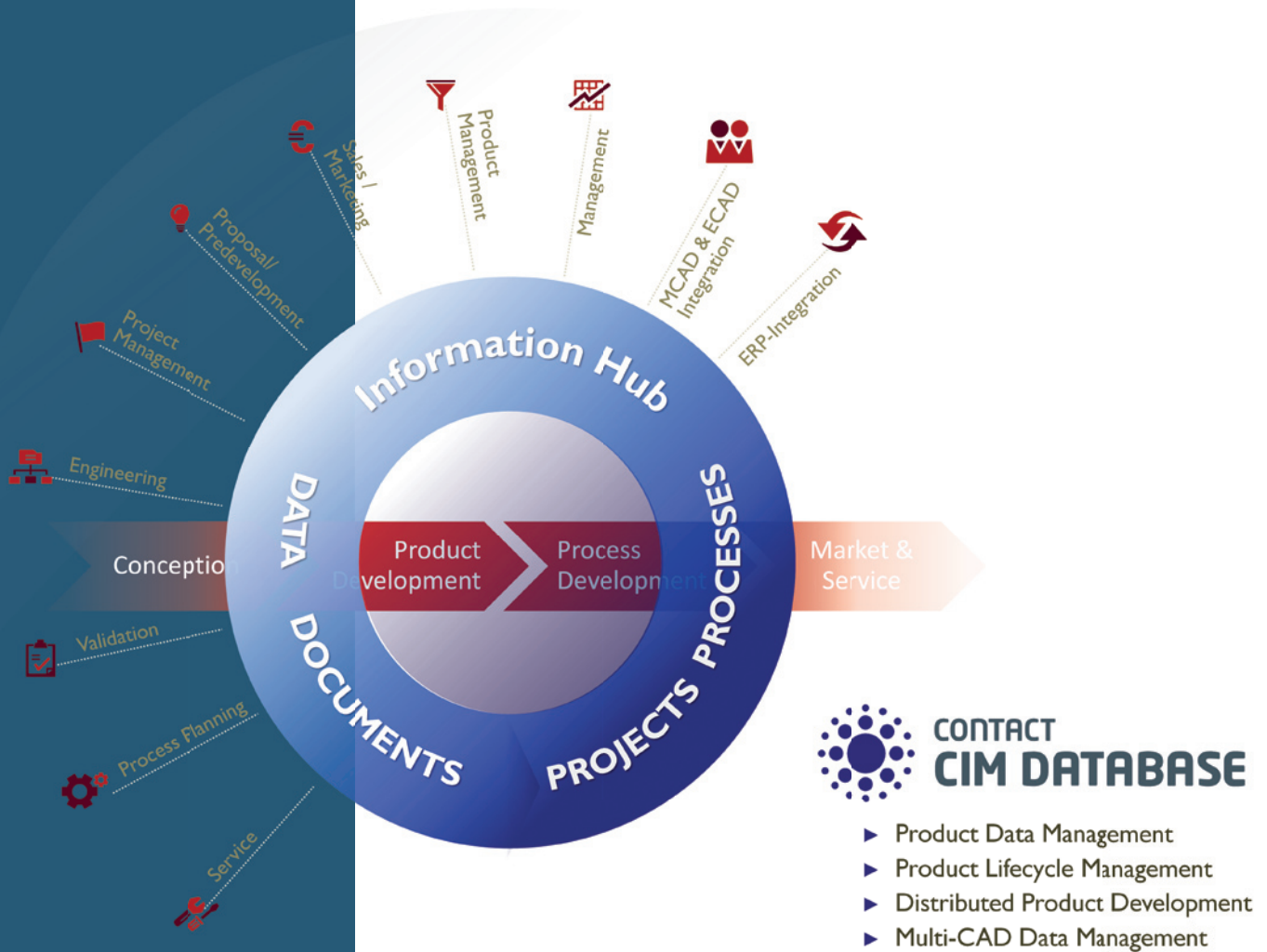
Globalization means dramatic change and far reaching challenges on company's abilities and strategies. Maintaining and increasing competitiveness on a global scale means developing innovative products with ever increasing speed and quality. Key to that is the product development process, which determines whether promising ideas finally turn into successful products. Within the 360° perspective of people, organizational set-up and technology CONTACT offers a PLM product portfolio dedicated to the special requirements and conditions of the innovation process. It goes beyond mere transaction processing towards true collaboration on today's complex products and mechatronics systems.

Focused

CONTACT Software is a leading provider of PLM solutions. We stand for PLM, state of the art solutions and absolute customer focus. Our highly scalable, most flexible and open PLM platform delivers excellent short and long term cost/benefit value. Our PLM applications excel through robust product data management, integrated process & project management, outstanding multi-CAD support and Workspaces as synonym for true collaboration throughout the work-in-progress phase.

CIM DATABASE: Enterprise PLM

Designed around the needs of robust product data management and the entire product development process, CIM DATABASE stands for comprehensive PLM functions based on leading edge platform technology.



CIM DATABASE is open by design, supporting standards like SOA, XML, LDAP, PDF, Eclipse etc. It provides end user integration with Microsoft's Windows Desktop, Outlook and Office, and backend synchronisation with enterprise systems like SAP, Infor/Baan, Microsoft Dynamics or IFS. CIM DATABASE integrates with leading CAD systems such as Catia, Pro/E, SolidWorks, NX, Solid Edge, AutoCAD, Inventor and many others and is best pick for companies running multi CAD environments.

CIM DATABASE provides the most flexible and capable solution available today in order to customize and update a company's PLM logic. Based on the acclaimed Python language, CDB Power Script delivers unprecedented PLM development capability and future-proof solutions to match the unique, value-adding characteristics of companies strong in innovation.

Project Office: 360° Project Management

To stay on track and keep up overview in often complex and ever changing project settings, project teams and managers require sound data and flexible ways to collaborate. Here CONTACT's Project Office takes on the complete 360° project management perspective. It equally supports planning, control, governance and the actual project work. Dedicated to people developing products, Project Office tightly integrates with the product development process, using the evolving product data and deliverables as the prime source to control quality, stage gates and project schedules.

All current project data and documents are available at one's fingertips within the Project Offices' data hub. Task management and the match of required and actual deliverables regulate the project's workflow and deliver maximum transparency on the progression of time, cost and quality. The multiproject cockpit delivers crucial, consolidated facts and figures in real time and puts managers back into the driver's seat.

Workspaces: Collaboration 2.0

Workspaces are CONTACT's revolutionary new, open architecture for CAD data management and collaborative product development. Workspaces abandon the conventional approach used by centrally-organized PLM- and ERP-systems and predetermined procedures. Workspaces envisage product development as work in progress and unite creativity with rules and regulations.

Workspaces provide the prime environment for product- and CAD-engineers and integrate with backend PLM- and ERP-systems to release data ready for downstream processes. For the first time a tool perfectly combines self-organization, teamwork and integration into the development process. In addition the open architecture supports efficient round-trip and work-in-progress cross-company collaboration with partners and suppliers. More on contact-software.com/workspaces.

Customers and References

We have been responsible for the success of several hundred projects in close cooperation with our customers. We are proud to support and accompany most reputable international industry leaders. They cluster around *Automotive, Mechanical Engineering & Construction, High Tech* and *Public Infrastructure & Utilities*. Due to our most scalable platform, we manage CAD data for regional development teams as well as large-scale, global PLM installations with dozens of sites and applications throughout the product lifecycle. Examples are:

- **Mechanical Engineering & Construction:** Leading companies like wind turbine manufacturer ENERCON, ranked no. 4 worldwide with an installed base equivalent to 18 nuclear Power plants.
- **Public Infrastructure & Utilities:** E.g. configuration management of DFS Deutsche Flugsicherung's flight control systems or project management for Transtec Gotthard, the consortium to equip the world's largest railway tunnel.
- **Automotive:** PLM and distributed CAD data management supporting large, globally operating automotive suppliers like Mann+Hummel, Kostal or Eberspächer.

See more on contact-software.com/references about our customers and references.

„In today's highly competitive and global markets we can sustain only because of our ability to innovate. For our product development we have selected an IT-solution matching this requirement.“

Joachim Dross,
Managing Director Finance.
ABUS August Bremicker Söhne KG

„Thanks to workspaces we now can work and collaborate on our CAD data locally and much faster. This and the overview the Workspace Manager provides give the engineers more freedom for the essentials: innovation.“

Lucijano Horvat,
Teamleader PLM Competence Center;
Christian Klostermann,
CAX-Support
RECARO Aircraft Seating GmbH & Co. KG

„CIM DATABASE's short implementation phase was simply convincing.“

Herbert Janßen,
Manager Standards and Technical Services
Siempelkamp Maschinen- und Anlagenbau GmbH
& Co. KG

CONTACT means core commitment for Product Data and Product Lifecycle Management and is a leading supplier of solutions for CAD-Data Management and PDM/PLM.

Our customers include numerous reputable companies and market leaders in the domains automotive, mechanical engineering, engineering and construction. We also provide solutions for energy providers, telecommunications and public transport.

CONTACT advises and supports customers on system conception and implementation, system replacement and upgrades in the course of growing demand.

As prime contractor, CONTACT takes responsibility for the complete solution. Customers benefit from our long-term business experience and one-stop coherent consulting, implementation and system technology.

CONTACT Software GmbH
Wiener Straße 1-3
D-28359 Bremen
Tel: +49 421 - 201 53-0
Fax: +49 421 - 201 53-40
E-Mail: info@contact.de
www.contact.de

Branch offices:

Frankfurt
Am Stock 15
D-61118 Bad Vilbel
Tel: +49 6101 - 981 66-0

Cologne
Gustav-Heinemann-Ufer 54
D-50968 Cologne
Tel: +49 221 - 27 22 28-0

Ulm
Erich-Rittinghaus-Str. 2
D-89250 Senden
Tel: +49 7307 - 95 44 50-1

»» ideas to innovations »»



All brand names, trademarks, product names, abbreviations thereof and logos are the property of their respective companies and are protected as such. All third-party protected brand names and trademarks are subject in all respects to the regulations of the relevant registration law and the rights of possession of the respective registered owner. The mere appearance of names without designation as proprietary shall not be construed as meaning that trademarks are not protected by the rights of third parties.

© CONTACT Software GmbH. All rights reserved. Changes may have come into effect after copy deadline for this document. All information supplied without guarantee.