



DAWOOD ENGINEERING

United Registrar of Systems



ISO 9001:2008 ISO/TS 16949:2009

Content

Businesses

Business Philosophy

Business Policy

Production Facilities

Products

Clientele

Contact



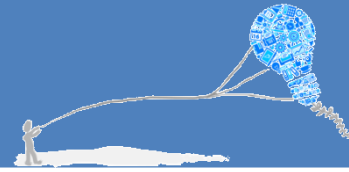
Businesses

In 2006 Dawood Engineering started operations which included **Steel Stamping, High Pressure Die-casting and Precision Machining**. The facility provides employment to more than 100 individuals.

In 2008, **SEINEN**, a trading subsidiary of Dawood Engineering, was established. The firm engages in trading & indenting of engineering tools and services.

**Dawood
Engineering**

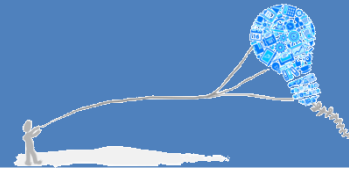
In 2014 MIDP, a joint venture with Marubeni – Itochu Steel Japan was set up. MIDP operates a slitter, leveler and Reshear to process steel sheets.



Philosophy

Vision

We will be a world class automotive company with a global foot print.



Philosophy

Mission

Dawood Engineering (Pvt.) Ltd strives to contribute to the engineering industry by producing quality components with a customer first approach.

We are constantly working for the betterment of all stake holders that include customers, employees and society at large.



Quality Policy

Commitment to provide quality parts and components as per customer requirements by applying the best engineering practices.

To enhance our capabilities & skills for continuous improvements.

To provide a safe, clean & healthy environment.

Objectives

To provide meaningful returns to our Shareholders.

To be transparent with our Business Associates & Employees.

To train and develop employees to improve their self esteem, job satisfaction and optimize their performance.

Plant



Plant Facilities



Dawood
Engineering



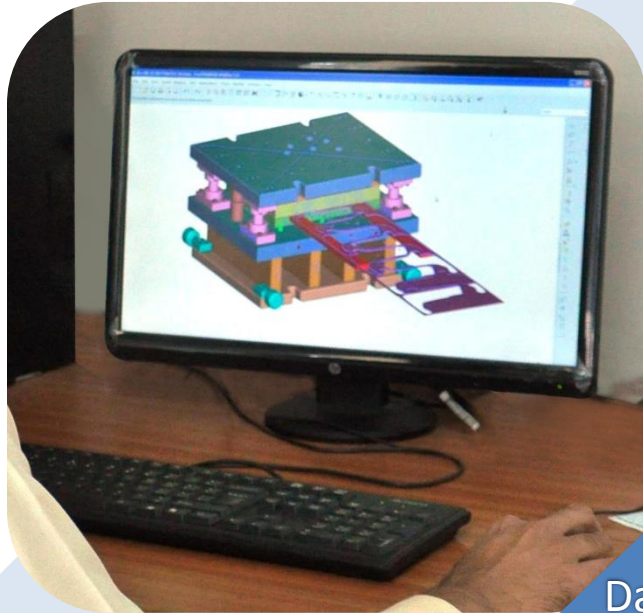
We are a reputed manufacturer of stamping parts.

We offer our customers a comprehensive range of Stamping Parts that match the quality requirements of OEM's.

Dawood Engineering is equipped with Mechanical and Hydraulic Presses from KOMATSU-Japan with a capacity of 60, 110, 200,300 and 600 Tons.



Precision Machining



Dawood
Engineering



The designing is being done through CAD & CAM by using latest software such as Pro-E, Uni Graphics, Master CAM and AutoCAD etc. with the help of CNC Machining Center, Surface Grinding Machine and Die spotting Press etc.

We are currently manufacturing stamping dies, Jigs & Fixtures as well as Checking Fixtures (CF) to meet our in-house requirements.

Additionally, we are furnished and operating CNC Machines at our Machining, Lathe and Taping Center.



Die Casting

With our expertise in this domain, we are able to offer a quality range of Aluminum Pressure Die Casting Parts manufactured by using customer specified grade raw materials.

To meet the standards, Dawood Engineering is equipped with Toshiba Machines from Japan.



Dawood
Engineering



Products



Products



PANEL REAR CG-125



PANEL FRONT CG-125

Dawood
Engineering



PANEL REAR CD-100



PANEL FRONT CD-100



PRESSURE PLATE CG-125



CTR. COM.
CLUTCH CG-125

Dawood
Engineering



HUB REAR CD-100



HUB FRONT CD-70

Products



COVER CRANK CASE

Dawood
Engineering



OUTLET SUB ASSYM. WATER



V3 GAS METER
BOTTOM CASE



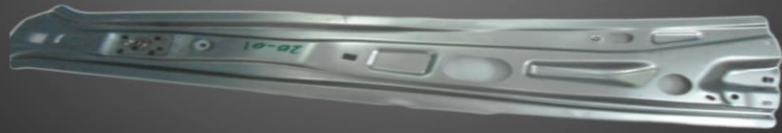
Dawood
Engineering



V3 GAS METER
TOP CASE



Products



PANEL RR COMP
CTR PILLAR LH

Dawood
Engineering



PANEL RR COMP
CTR PILLAR LH



BODY FRAME LH

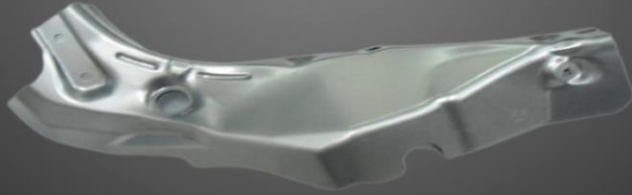
Dawood
Engineering



BODY FRAME RH

Products

PANEL RR LAMP
INNER RH



Dawood
Engineering

PANEL RR LAMP
INNER LH



PANEL RR LAMP
OUTER LH



Dawood
Engineering

PANEL RR LAMP
OUTER LH



 Clientele



agriauto
Agri Autos Industries



Atlas Honda Ltd.



YAMAHA
Revs Your Heart
Yamaha Motor Pakistan



SSGC
Sui Southern Gas Co.



SUZUKI
Pak Suzuki Motors Ltd.



HINO
Hino Pak Motors Ltd.

Contact

Address

Head Office:

245/2-J, Block VI, P.E.C.H.S,
Karachi-75400

Phone: +92-21-34300728-9;

Fax: +92-21-34546189

Email: info@dawood-engg.com

Web: www.dawood-engg.com

Factory:

Plot # N-6, Hub Industrial &
Trading Estate, Liedo.

Phone: +92-0853-363283

Fax: +92-0853-363871

Lahore Office:

419-A, 4th Floor, Siddiq Trade
Centre, 72 Main Boulevard,
Gulberg II - Lahore.

Phone: +92-42-35817276-7

Fax: +92-42-35817275