

CODE 798 FAMILY

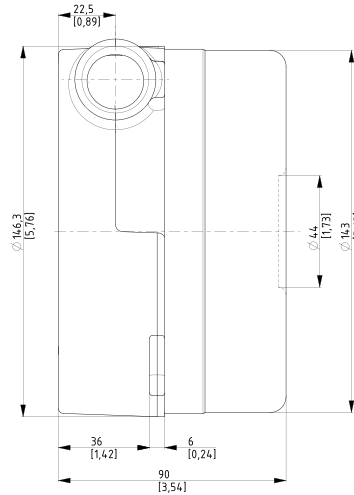
145 mm (5,7") DIAMETER

THRU-FLOW BLOWER

These are one of the most compact brushless blowers in our product range. These blower series have a 3 phase commutation, which enables user/customer to really precisely control the speed of the blower. We produce such blowers up to 450W. Solutions with universal voltage supply (120 and 230V) are in our standard production range. We have blowers with 1 or 2 impeller stages available. Main advantages of this blower against similar products on the market are: lower noise, better efficiency and less ΔT of working air.

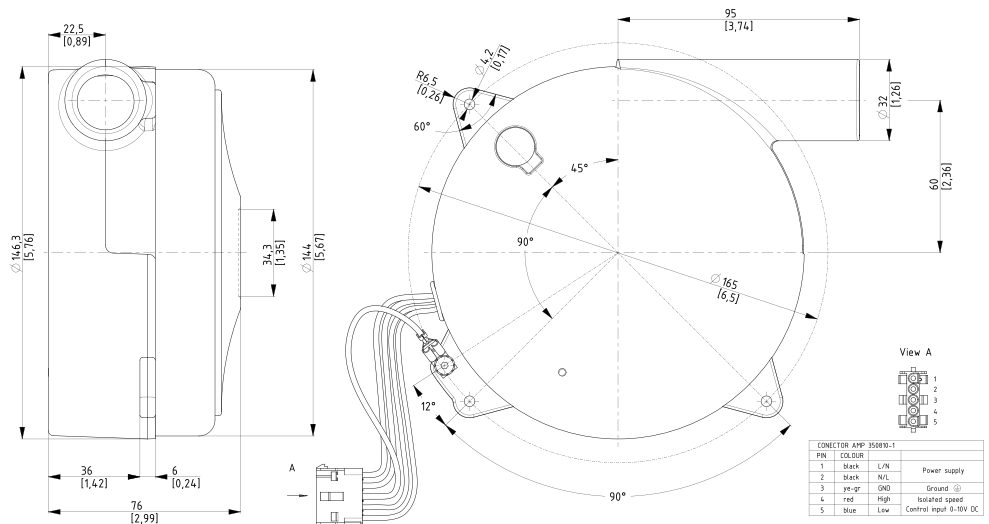
These blowers could be used in various appliances, particularly:

- air beds
- smaller fume extractors
- washer-disinfectors
- other various industrial applications.



There are plenty of options for each blower available (some are up on request):

- working air inlet with tube
- speed output
- PWM regulation
- failure output



Dimensional and performance data are subject to change without notice.

Selection and ordering information for 230V/120V 50Hz - THRU-FLOW

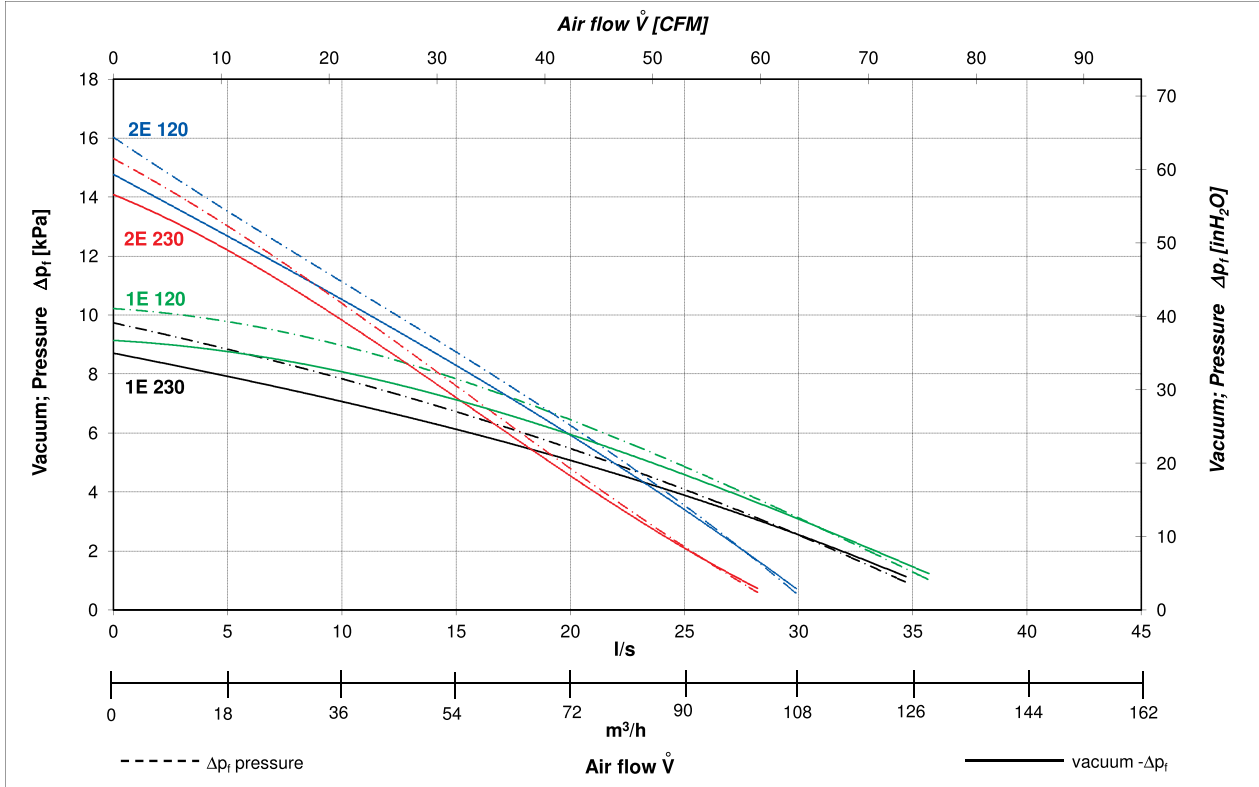
Code	Stage P / E	Height		P1	Sealed Vacuum		Sealed Pressure		Max. air flow		Mass	
	Curve	[in]	[mm]		[in]	[W]	[kPa]	[inH ₂ O]	[kPa]	[inH ₂ O]		[l/s]
798.3.460-500	1E 120, 1E 230	1,26	76	2,99	450	9,2	37,0	10,4	41,8	35,7	75,6	1,55
798.3.470-500	2E 120, 2E 230	1,26	90	3,54	450	14,7	59,1	16,0	64,3	29,9	63,4	1,85
798.3.460-600	1S 450	1,26	76	2,99	450	9,2	37,0	10,4	41,8	37,4	79,2	1,55
798.3.470-600	2S 450	1,26	90	3,54	450	14,7	59,1	16,0	64,3	29,9	63,4	1,85
798.3.430-600	1S 250	1,26	76	2,99	250	5,1	20,5	5,7	22,9	20,6	43,6	1,55
798.3.440-600	2S 250	1,26	90	3,54	250	7,9	31,7	8,7	35,0	24,8	52,5	1,85

Data above represent the performance of an average motor sample. Individual data may vary due to normal manufacturing variations.

THRU-FLOW BLOWER

120/230V / 50-60 Hz
and 120 or 230 V / 50-60 Hz

450W, 120/230 V



250 W, 450W, 120 or 230 V

