

# CODE 796 FAMILY

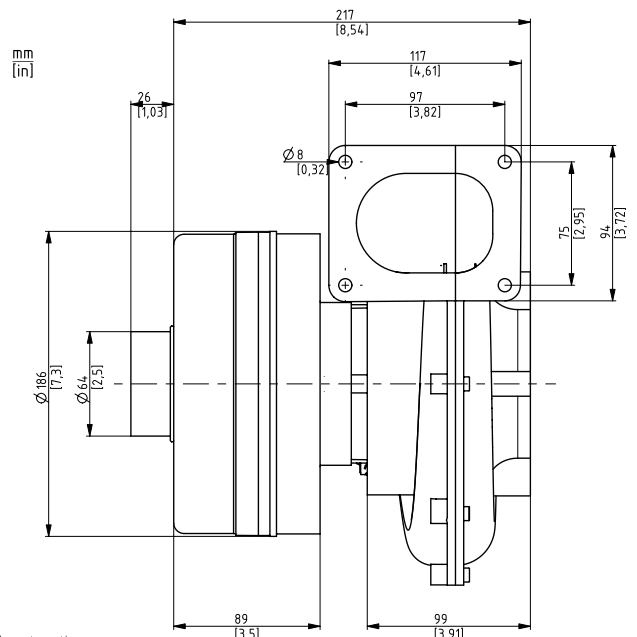
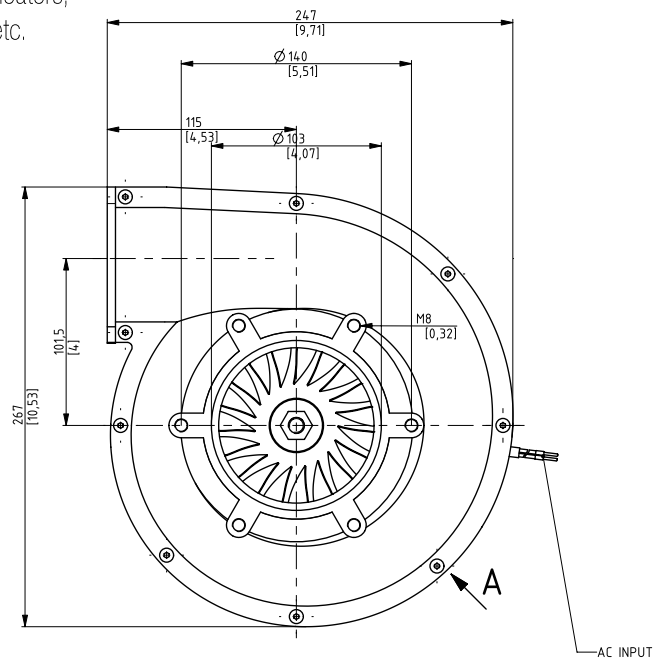
## 244 mm (9,6") DIAMETER

### ULTIMATE FLOW 1000

Latest addition to our range, is the largest of our blowers/suction units. The output reaches up to 1000m<sup>3</sup>/h, largest for its size. With PWM or DC output/input control it offers extensive range of control with low noise level. This is achieved through 3phase commutation resulting in high reliability and long life. These blowers are available in 120V, 230V and 400V AC.

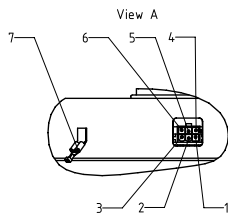
#### Possible applications:

- fume/smoke extraction,
- paper handling,
- packaging equipment,
- boilers,
- heaters,
- etc.



CONNECTOR TYCO 1586041-6

PIN		
1	HIGH	/
4	LOW	/
2	HIGH	ISOLATED SPEED CONTROL 0-10 VDC
5	LOW	
3	HIGH	ISOLATED SPEED OUTPUT SIGNAL
6	LOW	
7	PE	PROTECTIVE EARTH



Dimensional and performance data are subject to change without notice.

Selection and ordering information for 230V 50/60Hz - ULTIMATE 1000												
Code	Graph curves	Voltage	Height		P1	Sealed Vacuum		Sealed Pressure		Max. air flow		Mass
	Curve	[V]	[mm]	[in]	[W]	[kPa]	[inH <sub>2</sub> O]	[kPa]	[inH <sub>2</sub> O]	[l/s]	[CFM]	[kg]
796.3.275-xxx	1E 230V	230	216	8,50	1400	4	16,1	4,2	16,9	214	453,4	6

Data above represent the performance of an average motor sample. Individual data may vary due to normal manufacturing variations.

# TANGENTIAL DISCHARGE

120, 230V or 400 V / 50-60 Hz

230V-1400W

