



IN THE LINE OF POWER



Smart Grid Interface Module:
Increased reliability for smart
energy supply



Enhanced grid stability

The requirements for energy distribution in terms of usage, functionality and structures are ever changing. Power grids are subject to the severe deviations in energy flow caused by renewable sources. In the future, grids will also be challenged by electric vehicles drawing power at charging stations.



Transparent energy flows are a prerequisite for the stability of smart grids. Accordingly, actual grid states must be combined in a smart manner in order to match supply and demand. This is essential in order to balance the strongly fluctuating energy flows caused by volatile power sources on the one hand and consumption peaks caused by the steadily increasing number of electric vehicles drawing power for recharging on the other hand.

To allow grid operators to ensure the reliability of the distribution grid and to make cost-efficient adjustments to the infrastructure, it is necessary to continuously measure and monitor the dynamic loads in the distribution grids. With the EFEN Smart Grid Interface Module, metering points can be implemented at strategic points in distribution grids, easily and at low costs.



Compact and modular

In the future, grid operators, industrial enterprises and facility management units will depend on the continuous availability of measurement values and data regarding the loads on their distribution grids to ensure reliable operation. This data must be provided in nearly real-time so that control measures can be taken, especially at hot-spots such as local grid stations.

Meeting this challenge calls for tested and proven solutions: Simple assembly into existing systems without interruption of power, flexibility in terms of the number of measuring points as well as a hardware that can be handled without extensive prior training. With the Smart Grid Interface Module (SGIM), EFEN has developed a modular system for the collection of electric and other physical parameters in distribution cabinets and wiring distributors.



Flexible and extendable

Further to power adapter and CPU, other functions can be configured as options. Up to 5 measuring modules for 3-phase monitoring and for up to 10 low-voltage connections can be fitted to the snap-in module body. In addition, three plug-in slots are provided for universal modules such as GSM or OFC interfaces or I/O-modules with floating contacts.



Compact and accurate

Rogowski coils have significant benefits when space for current measuring is limited. The compact dimensions and simple attachment by means of tie-wraps to the power lines or busbars dramatically reduce time and effort when retrofitting. Since Rogowski coils show no saturation effects, a wide primary current range can be measured without compromising accuracy. The coils comply with accuracy class 1 according to EN 61869, thereby eliminating the need for coil and measuring module calibration.



Smart assembly

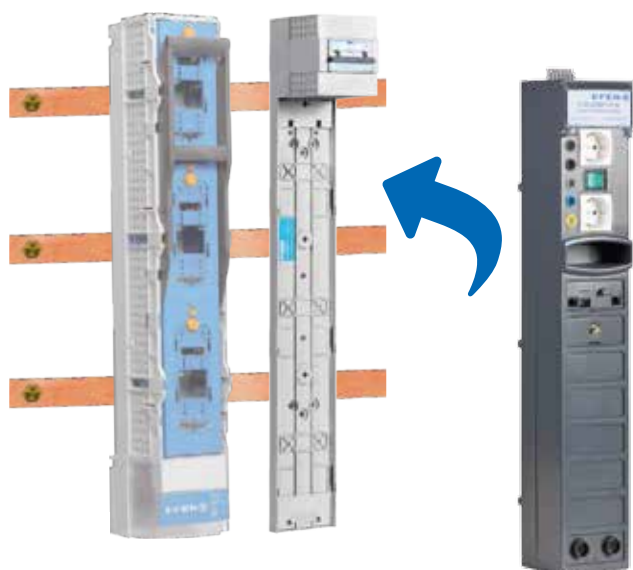


For upgrading existing systems, the Smart Grid Interface Module clearly outperforms conventional systems due to its easy assembly and installation.

The SGIM can be mounted to live busbars without any risk of accidental contact. Simply attach the installation base to the busbars. No need to power down the system.

Simple installation

Thanks to its installation base, the Smart Grid Interface Module can be easily retrofitted into existing distribution cabinets or new systems to ensure that the equipment is fit for future demands. The module body containing the modular measuring electronics can easily be snapped into the installation base and also be removed with little effort.



Installation done the smart way

With a width of only 100 mm, the Smart Grid Interface Module has the same installation width and dimensions as an NH vertical fuse-switch of size 1 to 3.

It is installed to live 185-mm busbar systems without prior powering-down. The module can also be installed in distribution systems without busbars. The voltages required for measuring are easily connected to the module body using a plug-type connector.

Integration done the easy way

Thanks to its compact dimensions and width of only 100 mm, the Smart Grid Interface Module can be retrofitted into blank slots in wiring distribution cabinets with little effort and at low costs. Measurements are made by Rogowski coil sensors connected to the measuring module by plug-type connectors. Existing current transformers fitted in NH fuse-switches can be connected to the measuring module as well.



Connection done the simple way

To facilitate measuring, Rogowski coils can be quickly retrofitted into existing systems without interrupting running processes. All you need to do is to loop the flexible sensor ring around the conductor to be measured. It is not necessary to open the conductor and interrupt the power flow. Just plug the wiring kit for three-phase measuring into the Rogowski measuring module and you are all set!



Measuring done the easy way

Rogowski coils consist of a flexible sensor ring that is simply looped around the conductor to be measured and that is then closed by a twist lock. This measuring method is well suited for currents between 100 and 1,000 Amps. To make installation really easy, the SGIM's Rogowski sensors for the measuring of three-phase power connections are pre-assembled and ready to connect.



Smart Energy Management

Effective communication

GSM communication

The GSM module facilitates bi-directional data transmission via the cellular network. The network can also be used for configuring the Smart Grid Interface Module.

Fiber optic module

A fiber optic module is available to connect the device to the internet via a fiber optic connection. The fiber optic module of the Smart Grid Interface Module supports the E2000 standard (Diamond).

Grid Analysis Integrated

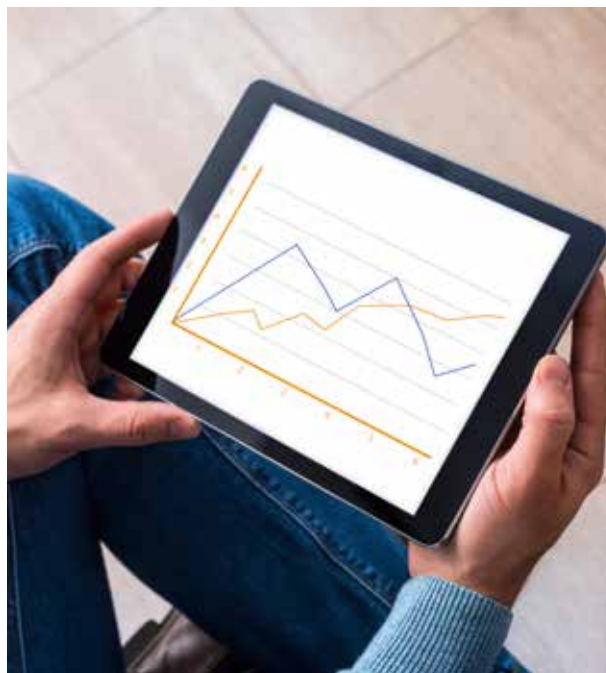
The Smart Grid Interface Module includes a three-phase voltage tap for mobile grid analysts. Measurements are done via fully insulated connection sockets protected by residual current devices.



Data visualization

Once installed, the Smart Grid Interface Module is enabled at the data server. The measuring module then provides data according to IEC 60870-5-104 and IEC 61850 for existing management systems. The data is then immediately accessible using a PC or mobile device via the user interface in the SCADA function of the web portal. Measurement data and their representation can be configured here as well. Warnings and alerts can be sent via SMS or email when thresholds are reached or exceeded.

The innovative and secure IoT connection also permits write-access. This data exchange can be used for example to trigger switching operations in transformer stations or perform analog control procedures.





System features

- ✓ 3-phase monitoring of up to 10 low-voltage connections
 - ✓ Voltage, current, grid frequency, phase angle
 - ✓ Active, reactive and apparent power, current metering
- ✓ Monitoring of switchgear cabinet temperature and humidity
- ✓ Internet connection via LAN, OFC, UMTS
- ✓ Availability of measurement data on portal server
- ✓ DIN-compliant mounting to 185 mm busbar system of a distribution enclosure or to a mounting panel
- ✓ Industrial standard solution for comprehensive roll-out
- ✓ Installation in live systems and plug-&-play commissioning
- ✓ Modular design for maximum flexibility
 - ✓ Installation slots for measuring sensors
 - ✓ Installation slots for universal IOs
- ✓ Investment protection thanks to upgradable features



- Metering of voltage, current and performance values



- Data logs acc. to IEC 60870-5-104



- Integrated current transformer connection



- Configuration and data evaluation via web tool



- Integrated mobile communications gateway for uncomplicated data transfer



- Customer-specific alerts via SMS or email

IN THE LINE OF POWER



Efficient Distribution

When it comes to reliable power supply, replacing nuclear power by renewable energies is one of the greatest challenges. To this end, EFEN offers consistent solutions for safety interfaces – from power generation and power storage to the targeted control of power consumers.



Reliable Protection

Reliable protection of people and assets is a key requirement for any power distribution system. The comprehensive solutions from EFEN ensure maximum safety in all areas of power supply, infrastructure and industry.



Smart Control

Higher energy efficiency reduces peak loads and lowers energy costs. Early-warning systems for minimal unplanned plant down-times. Smart solutions from EFEN ensure reliable communication and maximum availability of power distribution systems.

EFEN GmbH
Schlangenbader Str. 40
65344 Eltville, Germany
Tel. + 49 (0) 6129-46 -0
Fax + 49 (0) 6129-46-222
e-Mail: efen@efen.com
www.efen.com

Slovakia
EFEN Slovakia s.r.o
Odborárska 3
831 02 Bratislava
Slovensko/Slovakia
Tel. 00421 55 633 9898
Fax 00421 55 633 9898
e-Mail: efen@nextra.sk

Logistic - Center
EFEN GmbH
Gewerbepark Nord 6
04938 Uebigau
Germany
Tel. +49 35365 893 0
Fax +49 35365 893 35
e-Mail: efen@efen.com

Hungary
EFEN Division
Guba Sándor u. 87
7400 Kaposvár
Hungary
Tel. +36-82-417559
Fax +36-82-417529
e-Mail: info@efen-hungaria.hu

Poland
EFEN zo.o.
Aleja Młodych 26-28
41-106 Siemianowice Śląskie
Poland
Tel. +48 32 201 09 42
Fax +48 32 220 00 64
e-Mail: efen@efen.com.pl

China
EFEN Shanghai Office
800 Shangchen Rd (1090 New Century Ave)
Room 517 CIMIC Building Shanghai 200120
China
Tel. +86 21 6575-8878
Fax +86 21 6575-8876
e-Mail: efen-shanghai@efen.com.cn

