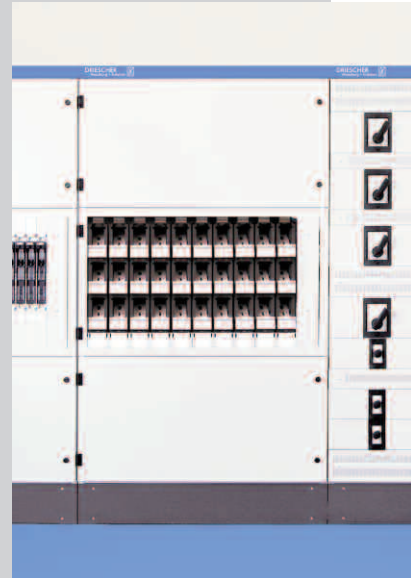




# DRIESCHER

## Low-voltage Distributions

- Series 88 - Vamocon
- tested for resistance to accidental arcing
- Acc. to EN 61439-2 tested



# 5000A

## Moosburg • Eisleben

ELEKTROTECHNISCHE WERKE  
FRITZ DRIESCHER & SÖHNE GMBH

D-85366 MOOSBURG • TEL. +49 87 61 6 81-0 • FAX +49 87 61 68 12 30  
<http://www.driescher.com> [infoservice@driescher.de](mailto:infoservice@driescher.de)



## DRIESCHER - Low-voltage distributions

acc. to the valid instructions of DIN, VDE and EN

### Contents

- 2 Technical data
- 3 General, protection against internal arcs
- 4 Special features of series 88
- 5 Detailed view on series 88
- 6 Possible system components and field quantity
- 7 Checklist for the planning
- 8 Representatives close to you

### Technical Data

International protection acc. to DIN EN 60529	up to IP 5X
Safety precaution	with protective conductor (Protection class I)
Category of over-voltage	III
Degree of pollution	3
Interior division acc. to IEC 61439-2	part 1 - 4b
Protection class	1 earthed
Rated current $I_n$	up to 5000 A
Rated voltage $U_e$	230 / 690 V AC
Rated insulation voltage $U_i$	1000 V
Rated peak withstand current resistance $I_{pk}$	330 kA
Rated short-time current resistance $I_{cw}$	150 kA / 1s
Biggest dimensions allowed	width 1200 mm height 2200 mm (plus socket 100/200 mm, plus canopy 60 mm)
Biggest transportation unit allowed	width 1250 mm height 2460 mm depth 1075 mm
Ambient temperature	-5 up to +40° C
Ambient temperature (average value 24h)	+35° C
Relative humidity	50% at 40° C

#### Electrical varieties of components:

- Feeding with circuit breaker from Eaton, ABB, Schneider, Siemens, GE
- Outgoing feeder downwards / upwards; with low-voltage fuse switch disconnecter from DRIESCHER, SASIL-J. Müller, SLIMLINE-ABB, EFEN, Jung, Pronutec

## DRIESCHER – Low-voltage Distributions

### General

#### Protection against internal arcs

**The series 88 offers the highest possible safety from the effects of an arc.**

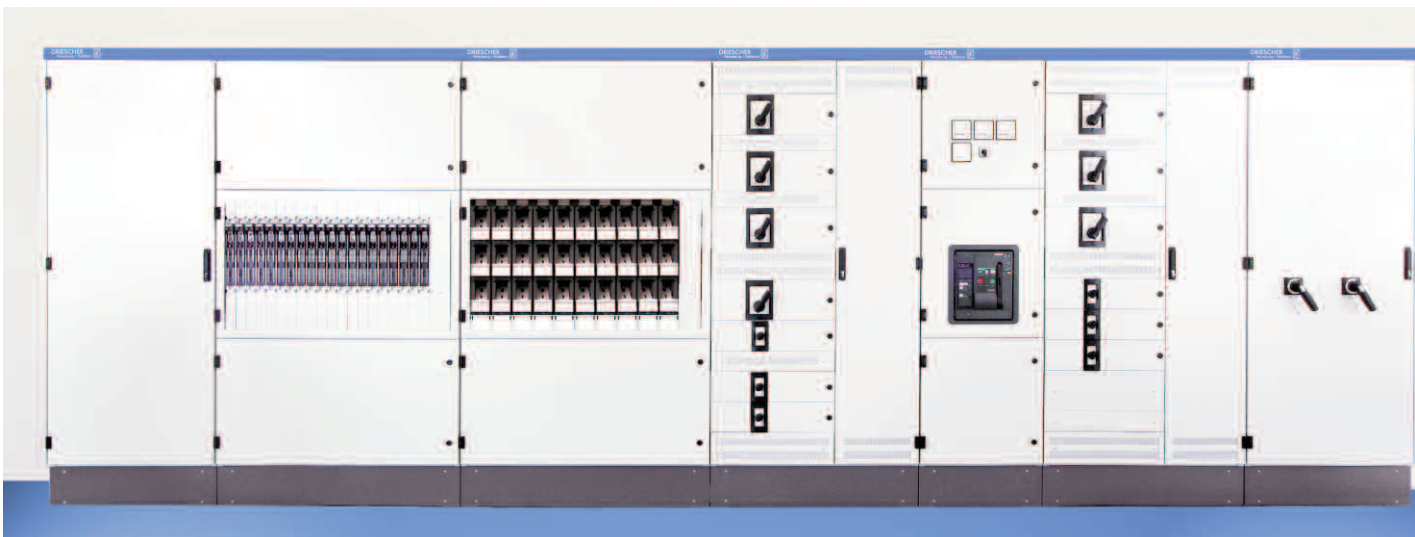
The protection from the effects of an arc is the highest requirement a power distribution has to meet. Doors and covers may not either open or remove nor may burn holes occur in parts of the casing.

Indicators may not inflame and the circuit of the protective conductor has to stay functional. The series 88 offers this protection. Test of IPH acc. to IEC 61641 respectively VDE 0660 Part 500/2 that have been successfully passed, confirm that the protection and health of the personnel is given any time.

For an additional increase of safety we can optionally offer you arc barriers in the panel frame as well as insulated main bus bar systems.



Series 88



The ingenious ventilation makes high currents in compact installations possible. Without further accessory the ventilating apertures combine a high airflow with a high protection class.

The screwing of the bus bars is and remains accessible from the front. Sockets are available in different heights, but also without a socket, the doors can be opened and closed without problems in case of uneven underground.



Series 88 with open door

## DRIESCHER – Low-voltage Distributions

### Series 88

#### Special features:

DRIESCHER – low-voltage distributions type 88 correspond to the valid instructions of VDE.

- tested acc. to DIN EN 61439-2.
- approved DRIESCHER long-life cycle through galvanized section steel frames.
- best quality and highest personnel and operating safety.
- highest safety from the effects of an arc.
- protection class up to IP 5x.
- short delivery times because of the flexibility of the modular system.
- above the outgoing circuits with additional place for the installation of measuring devices, control devices, etc.
- all panels are mounted and wired in the factory and delivered ready for connection.
- on requirement empty panels with mounting plates matching to the closed construction are available.
- sheet steel covers are available in all RAL-colours (standard colour RAL 7035 powder coated).  
All sheets are aluminium zinc galvanized.
- highest possible operating safety and reliability with the proven DRIESCHER low-voltage fuse switch disconnecter type 403 (see booklet of the trade association: "Safety during working on electrical installations").



DRIESCHER – Low-voltage Distributions

Series 88



double edged doors with ventilation, earthing and mounting bolts as standard



front cover for labelling, ventilation on the top



hinge 180° with locking for the mounting of the door (electric arc safe)



25 mm and 12.5 mm perforation in all frame profiles



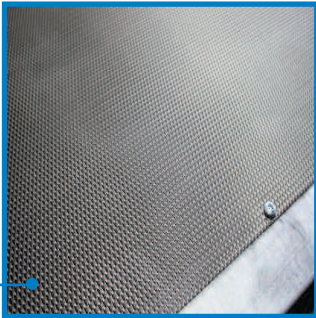
doors with turning lever and lock or quarter-turn lock



socket with 100 or 200 mm on desire



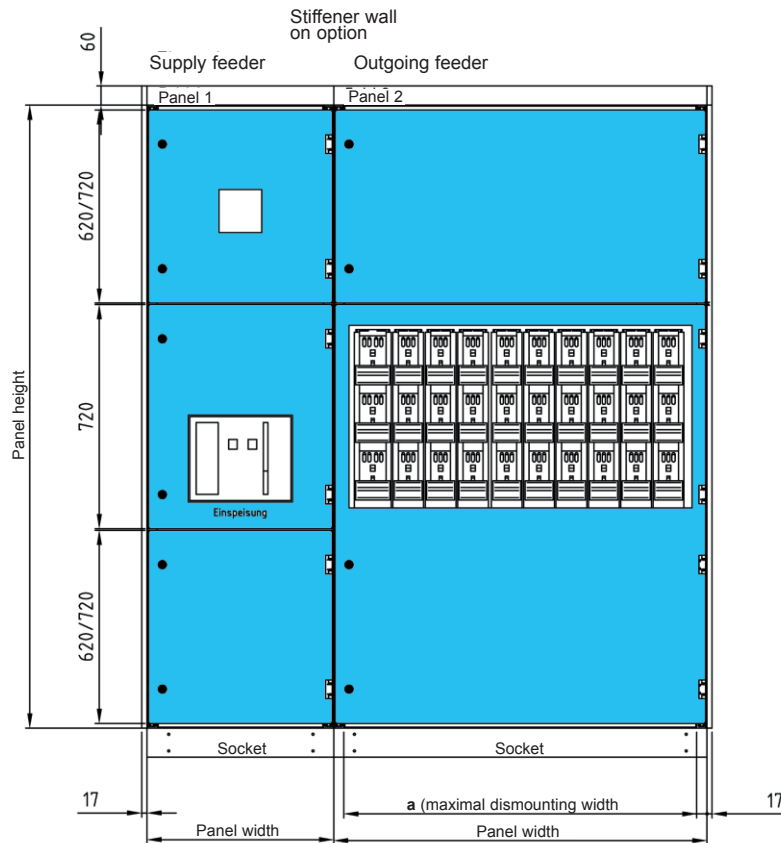
lower shelf, support for circuit breaker, support for bus bar support and door stop in one



expanded metal cover (0.9 mm), protection class IP 4x

## DRIESCHER – Low-voltage Distributions

## Series 88



## Supply feeders

Pos	Equipment (3-pole)	panel width	a	possible panel depth	possible panel height
Pos. 1	on request	400	335	425, 625, 825, 1025	2000, 2200
Pos. 2	ABB E1, 3WL BG1, Schneider NT16, further on request	500	435	425, 625, 825, 1025	2000, 2200
Pos. 3	ABB E3, 3WL BG2, Schneider NW40, further on request	600	535	425, 625, 825, 1025	2000, 2200
Pos. 4	ABB E4, 3WL BG3, Schneider NW40, further on request	850	785	425, 625, 825, 1025	2000, 2200
Pos. 5	ABB E6, 3WL BG3, Schneider NW40, further on request	1000	935	425, 625, 825, 1025	2000, 2200
Pos. 6	on request	1200	1135	425, 625, 825, 1025	2000, 2200

## Outgoing feeders with 403 systems

Pos	Equipment	Equipment alternative	panel width	a	possible panel depth	possible panel height
Pos. 1	on request		400	335	425, 625, 825, 1025	2000, 2200
Pos. 2	4 x 400 A		500	435	425, 625, 825, 1025	2000, 2200
Pos. 3	5 x 400 A	2 x 630 A + 2 x 400 A	600	535	425, 625, 825, 1025	2000, 2200
Pos. 4	7 x 400 A	2 x 630 A + 5 x 400 A	850	785	425, 625, 825, 1025	2000, 2200
Pos. 5	8 x 400 A	2 x 630 A + 6 x 400 A	1000	935	425, 625, 825, 1025	2000, 2200
Pos. 6	10 x 400 A	2 x 630 A + 8 x 400 A	1200	1135	425, 625, 825, 1025	2000, 2200

## Outgoing feeders with 203 systems

Pos	Equipment	Equipment alternative	panel width	a	possible panel depth	possible panel height
Pos. 1	on request		400	335	425, 625, 825, 1025	2000, 2200
Pos. 2	4 x 400 A		500	435	425, 625, 825, 1025	2000, 2200
Pos. 3	5 x 400 A		600	535	425, 625, 825, 1025	2000, 2200
Pos. 4	7 x 400 A		850	785	425, 625, 825, 1025	2000, 2200
Pos. 5	9 x 400 A		1000	935	425, 625, 825, 1025	2000, 2200
Pos. 6	11 x 400 A		1200	1135	425, 625, 825, 1025	2000, 2200

Multipart sockets 100 mm and 200 mm high are optionally available in all panel dimensions.

## Checklist for the planning of low-voltage switchgears

- please remove or copy and send back to Elektrotechnische Werke Fritz Driescher & Söhne GmbH  
85366 Moosburg • Phone +49 87 61 6 81-0 • Fax +49 87 61 6 81-1 37 •  
vertrieb.nsp@driescher.de



Sender \_\_\_\_\_

Company \_\_\_\_\_  
First name \_\_\_\_\_ Surname \_\_\_\_\_  
Department \_\_\_\_\_  
Street \_\_\_\_\_  
Post code \_\_\_\_\_ Place \_\_\_\_\_  
Phone \_\_\_\_\_ Fax \_\_\_\_\_  
email \_\_\_\_\_ http \_\_\_\_\_



Rated transformer power \_\_\_\_\_ kVA  
Rated current - bus bar \_\_\_\_\_ A  
Network \_\_\_\_\_

Series  88 Colour \_\_\_\_\_

- Supply feeder
- fuse disconnecter LTL 4a • \_\_\_\_\_ A
  - circuit breaker including adjustable short-circuit trip and overload trip
  - rated current \_\_\_\_\_ A
  - fixed mounting  plug-in device
  - manual actuator  motor actuator
  - with operating current release \_\_\_\_\_ V
  - with undervoltage release \_\_\_\_\_ V undelayed
  - with undervoltage release \_\_\_\_\_ V delayed 0,5 up to 4s.
  - with normal auxiliary switch Nhi (2C+2O)
  - with relative auxiliary switch Rhi (2C+1O)
  - with leading auxiliary switch Vhi (2C+1O)
  - with current/voltage measurement (including fuse protection of the station lighting)
  - with analog indicating devices
  - with multifunction device type \_\_\_\_\_ Fabr. \_\_\_\_\_

- Outgoing feeder
- \_\_\_\_\_ low-voltage fuse switch disconnecter  403  203 / 400 A (NH 2)
  - \_\_\_\_\_ low-voltage fuse switch disconnecter  403  203 / 630 A (NH 3)
  - \_\_\_\_\_ low-voltage fuse switch disconnecter  403  203 / \_\_\_\_\_ A
  - \_\_\_\_\_ reserve positions  403  203 / \_\_\_\_\_ A
  - \_\_\_\_\_ low-voltage fuse switch disconnecter 301 / 160 A (NH 00)
  - \_\_\_\_\_ reserve positions 301 / 160 A
  - outgoing circuit 1-pole or  3-pole
  - outgoing circuit with connecting screws M12 x 35 mm
  - outgoing circuit with V-connecting terminal 50 up to 300 mm<sup>2</sup> se
  - outgoing circuit with direct connecting terminal 50 up to 185 mm<sup>2</sup> se
  - with outgoing measurement 1-pole (L3)
  - with outgoing measurement 3-pole
  - with inspection window in the instrument board

Further options \_\_\_\_\_

**Agents in Germany (00 49) :**

**Berlin  
Dresden** Büro Dresden  
Michael Böhm  
Hallstätter Straße 12a  
01279 Dresden  
Tel. (03 51) 2 50 24 29  
Fax (03 51) 2 50 24 38  
michael.boehm@driescher.de

**Eisleben** DRIESCHER GMBH EISLEBEN  
Hallesche Straße 94  
06295 Eisleben  
Tel. (0 34 75) 7 25 50  
Fax (0 34 75) 69 66 99  
infoservice@driescher-eisleben.de

**Schkeuditz** Büro Schkeuditz  
Norbert Essmann  
Am Storchennest 10  
04435 Schkeuditz  
Tel. (03 42 04) 38 96 08  
Fax (03 42 04) 3 75 94  
Mobil (01 71) 4 53 43 26  
norbert.essmann@driescher.de

**Ilse** Büro Ilse  
Andreas Brutscheck  
Ostring 26  
31241 Ilse  
Tel. (0 51 72) 12 85 25  
Mobil (01 75) 2 79 23 25  
andreas.brutscheck@driescher.de

**Bad  
Lobenstein** Ingenieur-Büro  
Reinhard Albrecht  
Mathildenhöhe 24  
07356 Bad Lobenstein  
Tel. (03 66 51) 5 53 20  
Fax (03 66 51) 3 11 31  
info@reinhard-albrecht.de

**Unna** Eltroplan Elektrotechnische Anlagen GmbH  
Edisonstr. 3  
59199 Bönen  
Tel. (0 23 83) 9 22 68 13  
Fax. (0 23 83) 9 22 68 29  
h.j.weber@eltroplan-gmbh.de

**Frankfurt** Ingenieur-Büro  
Pfeffer GmbH  
Industrievertretungen  
Carl-Benz-Straße 13  
63322 Rödermark  
Tel. (0 60 74) 8 75 90  
Fax (0 60 74) 8 75 96 9  
webmaster@ipi-online.de

**München** Ingenieurbüro  
S. Biebl  
Rosenheimer Straße 14  
85653 Aying-Großhelfendorf  
Tel. (0 80 95) 87 24 0  
Fax (0 80 95) 87 24 24  
info@ib-biebl.de

**Obermichel-  
bach** Büro Obermichelbach  
Tim Wagner  
Eichenstraße 30  
90587 Obermichelbach  
Mobil (01 71) 6 76 66 18  
tim.wagner@driescher.de

**Bernbeuren** Büro Lechbruck  
Ernst Weindl  
Schornfeld 2  
86975 Bernbeuren  
Tel. (0 88 60) 9 22 94 69  
Fax (0 88 60) 9 22 72 45  
Mobil (01 72) 9 99 98 76

**Agents in Austria (0043) :**

**Wien** Eximges Gerstmaier Handels GmbH  
Siegfried Gerstmaier  
Stättermayergasse 28-30  
A-1150 Wien  
Tel. (01) 9 82 59 41  
Fax (01) 9 82 59 44  
office@eximges.at

**Agents in Switzerland (0041) :**

**Villmergen** Cellpack Power Systems AG  
Schützenhausstraße 2  
CH-5612 Villmergen  
Tel. (0 56) 6 18 18 18  
Fax (0 56) 6 19 88 04  
power.systems@cellpack.ch

**Agents in Turkey (0090) :**

**Istanbul** Inter-Teknik  
Elektrik Ticaret ve Sanayi LTD. STI. IST.  
Rihtim Caddesi Fatih Ishani 33/10  
34425 Karaköy-Istanbul  
Tel. (212) 2 49 84 58  
Fax (212) 2 51 61 45  
www.inter-teknik.com.tr

**Agents in China (0086) :**

**Xi'an** Xi'an Driescher Energy Solutions Co. Ltd.  
Room 10301 on the Third Floor of the  
2<sup>nd</sup> Building  
No.12, Block A, Pioneering Park,  
No. 69, Jinye Road,  
Industries Development Zone,  
710077 Xi'an, P.R. China  
Tel. (00 86) 29 68 59 05 30  
Fax (00 86) 29 68 59 05 29  
info@xadriescher.com  
www.xadriescher.com

**Agents in Australia (0061) :**

**Villawood** MV Technology Solutions  
Unit 3/19 Miowera Road  
Villawood NSW 2163  
Tel. +61 (0) 2 97 26 77 02  
Fax +61 (0) 2 97 26 77 03  
www.mvtech.com.au

**Agents in the Czech Republic (0042) :**

**Zichovice** DRIESCHER S.R.O.  
CZ-34162 Zichovice 198  
Tel. (03 76) 59 63 22  
Fax (03 76) 59 65 42  
drizich@ipnet.cz

**Brno** DRIBO SPOL. S.R.O.  
Prazakova 36  
CZ-61900 Brno  
Tel. (05) 43 32 11 11  
Fax (05) 43 21 66 19  
dribo@dribo.cz

**Agents in the Slovak Republic (00421) :**

**Stara Tura** DRIBO STARA TURA S.R.O.  
Husitska 2  
SK-11601 Stara Tura  
Tel. (08 34) 76 37 22  
Fax (08 34) 76 24 59

**Agents in the USA (001) :**

**Detroit** Park Power Distribution Systems  
19197 Sherwood Ave.  
Detroit, Michigan 48234-2880  
Tel. (3 13) 3 66 22 00  
Fax (3 13) 3 66 15 40  
park.det@ix.netcom.com

**Agents in Sweden (0046) :**

**Norrköping** AB GEVEA  
Box 12043  
60012 Norrköping  
Tel. +46 11 18 48 00  
Fax +46 11 18 23 10  
info@gevea.se  
www.gevea.se

**Agents in Romania (0040) :**

**Sibiu** GENERAL MANAGEMENT  
srl SIBIU  
Mircea Opincariu  
Fratii Grachi 5,  
550282 Sibiu  
Tel. +40 2 69 21 13 51  
Fax +40 2 69 23 22 25  
www.general-management.ro

