

A high-contrast, black and white photograph showing the internal blades of a compressor. The blades are curved and arranged in a circular pattern, creating a sense of motion and mechanical complexity. The lighting highlights the metallic surfaces and the sharp edges of the blades.

ELGi COMPRESSORS

ELGi
Always Better.

Air compressors across the spectrum



EN Series

Encapsulated Screw Air Compressor
2.2 – 75 kW / 8 – 469 CFM



EG Series

Oil Lubricated Screw Air Compressor
11 – 250 kW / 47 – 1612 CFM



OF Series

Oil Free Screw Air Compressor
90 – 450 kW / 572 – 2450 CFM



CG Series

Centrifugal Compressor
450 – 930 kW / 3000 – 5200 CFM



Oil Lubricated Recip

Oil Lubricated Piston Compressor
1.0 – 40 HP / 2.0 – 128 CFM



Oil Free Recip

Oil Free Piston Compressor
1.0 – 75 HP / 1.8 – 300 CFM



PG Series (Electric)

Electric Portable Screw Compressor
22 – 75 kW / 131 – 514 CFM



PG Series (Diesel)

Diesel Powered Screw Compressor
175 – 1500 CFM / 100 – 400 PSI

Complete end-to-end solutions and accessories



- Variable Frequency Drives
- Receivers
- Dryers
- Downstream Filters
- Drain Valves

For all industries and applications



Automotive



Textiles



Pharma



Rice and Pulse



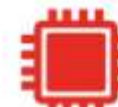
Leather



F & B



Healthcare



Electronics



Paper



Manufacturing



Oil & Gas



Iron & Steel



Mining



Nuclear Plant



Electrical



Aviation



Railways



Construction

WORLD-CLASS INFRASTRUCTURE AND TECHNOLOGICAL ADVANTAGE

ELGi
Always Better.

>50 lakh sq ft of “Future-ready” manufacturing facilities



COMPRESSOR FACTORY

3 state-of-the-art manufacturing units in the world with high standards of quality and safety



FOUNDRY

Produces high precision grey and SG iron castings



MOTOR MANUFACTURING

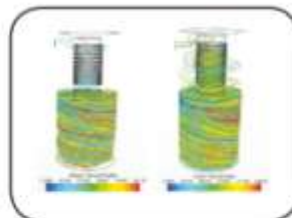
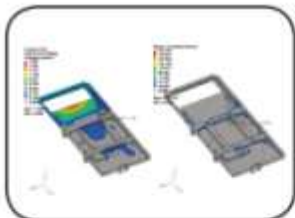
State-of-the-art motor manufacturing plant to produce highly efficient and reliable motors for captive consumption



PRESSURE VESSELS PLANT

Produces pressure vessels meeting international standards.

Technological advantage



ELGi has developed in-house FEA, CFD, NVH and industrial design capabilities to ensure continuous innovation in product quality.

FEA: Finite Element Analysis, CFD: Computational Fluid Dynamics, NVH: Noise Vibration Harshness

GLOBAL SUBSIDIARIES



ATS ELGi
THINK LONG RUN



pulford
AIR & GAS

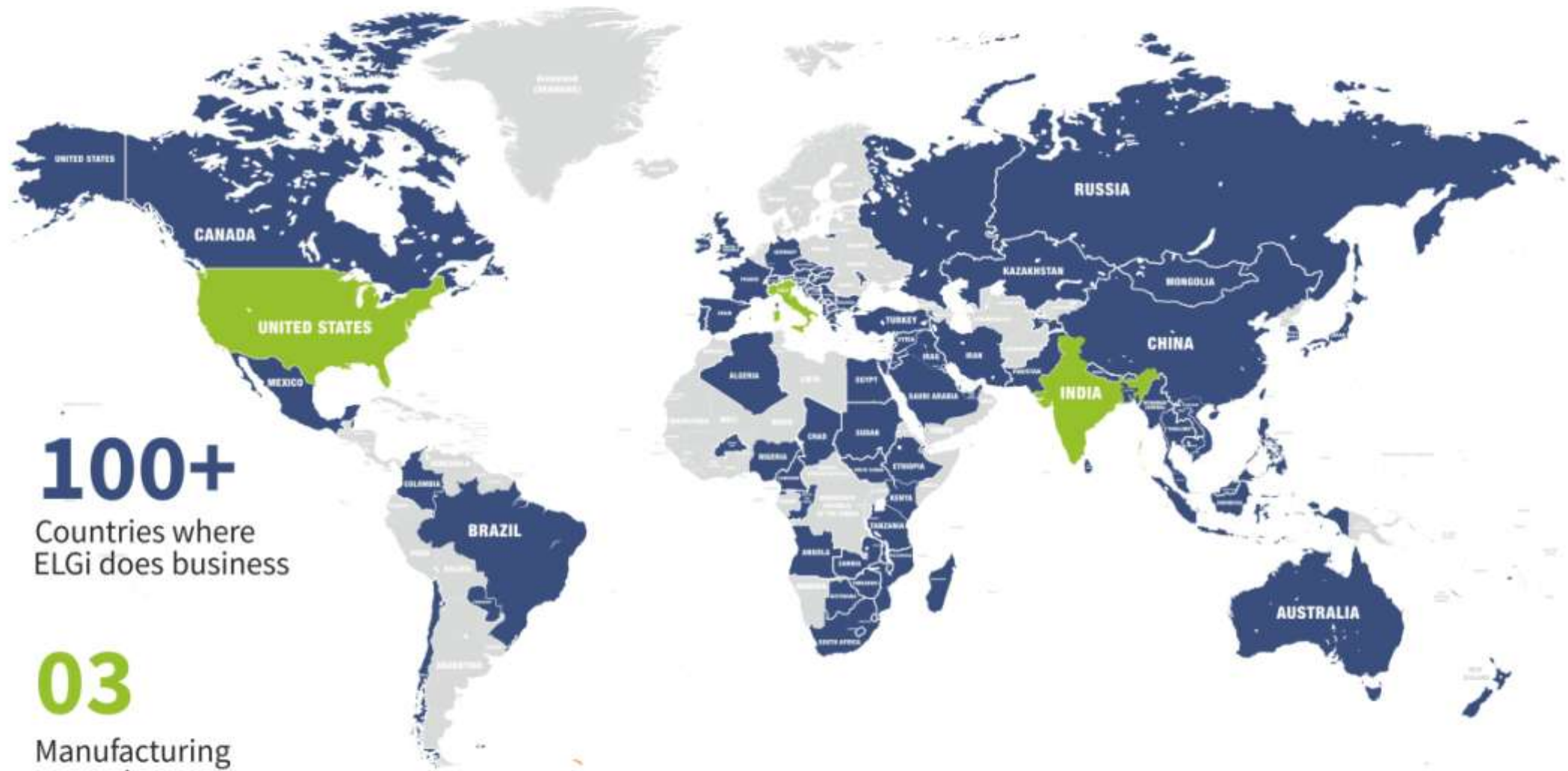
ROTAIR
TECHNOLOGY AND ENGINEERING SOLUTIONS

JOINT VENTURES

ELGi



Sauer Compressors



PROVEN RESULTS - LEADING GLOBAL BRANDS TRUST ELGi FOR THEIR COMPRESSED AIR REQUIREMENTS

ELGi
Always Better.



FESTO

aramark

Armstrong



Bodycote

AMERICAN
THE RIGHT WAY



HAECO

DIXIE AEROSPACE
A Microbial Corp. Company



DRUMMOND COMPANY, INC.

DUKE ENERGY

ESSAR



INDORAMA



JABIL

Johnson Controls

JX
JX Nippon Oil & Gas Exploration

Kapco Global
KAPCO FOOD & CHEMICAL SERVICE



McCALL FARMS
SINCE 1858



NACHI
NACHI AMERICA INC.



N.E.W. PLASTICS CORP.



Pinnacle
LANDSCAPE



Prysmian Group



REVLON

ROCKWELL MEDICAL

valspar

VEOLIA

FAIRFAX COATINGS
of Virginia LLC

LORD
Ask Us How



okamoto

HUTCHINSON

PROVEN RESULTS - OUR COMPRESSORS DRIVE CRITICAL APPLICATIONS ACROSS VARIOUS INDUSTRIES

ELGi
Always Better.

Auto									
Textile									
Pharma									
Cement									
Iron and steel									
Power									
FMCG									
Plastics and Leather									
Other									



Thank You