

**NEW**



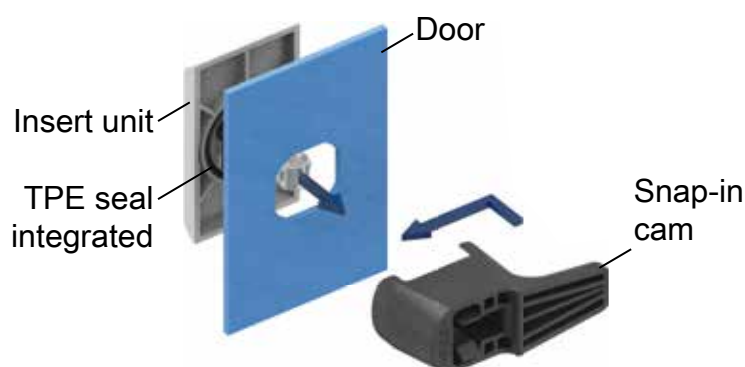
**Matt chrome  
look**



**Brushed stainless steel  
look**



**Black**



**2 parts mounted in 3 seconds!**

## Quarter turn for quick mounting and freely designed foil

It takes only two steps to mount the two-part quick-mounting quarter turn: From the front of the door, you put the insert unit into the designated mounting hole, from the back you insert the snap-in cam and push it until it catches. Done in only 3 seconds!

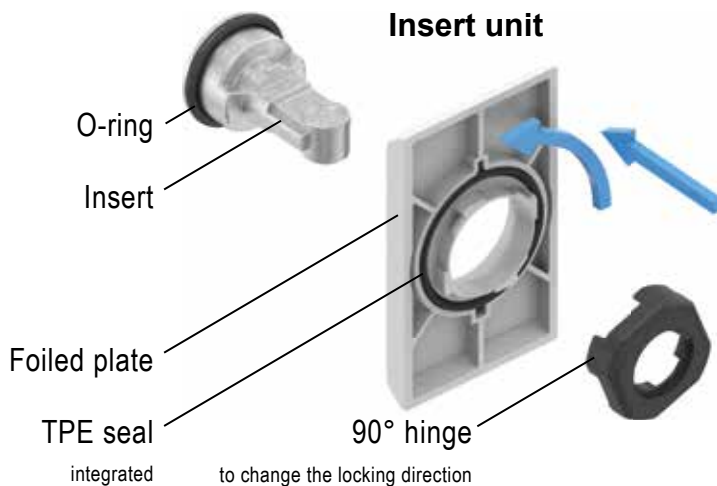
### Product features at a glance:

- Pre-assembled insert unit: housing plate of polyamide GF, insert of zinc-die
- Quick snap-in assembly without tools saves up to 80% assembly time
- On request, housing plate with freely designed foil e.g. company logo and/or material imitation
- Various inserts in stock (further inserts on request)
- Housing with integrated cam of polyamide GF
- Self-sealing construction with integrated TPE seal onto the back of housing plate (IP 69K)
- Used at door thickness from 1.0 mm until 3.0 mm (Ts including surface coating)
- Standard cut out □ 20.1 rounded up to 22.5, Program 1000
- Patented and design protected

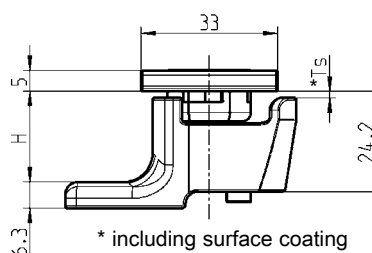
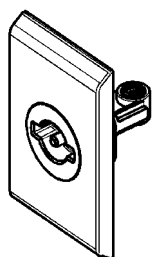
\* For technical details see back page \*

# NEW

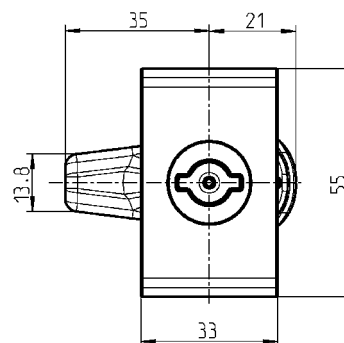
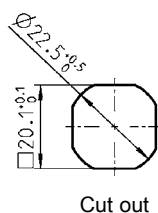
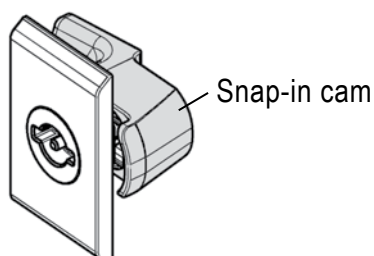
## Insert unit



## Insert unit pre-assembled



## Quarter turn-quick mounting



Insert unit pre-assembled:  
Insert zinc die with O-ring;  
housing plate polyamide GF black① or light grey② RAL 7035 with integrated TPE seal;  
design foil on choice; 90° stopper polyamide GF black

Insert zinc die with O-ring

Further inserts on request!

Housing plate polyamide GF with integrated TPE seal

with design foil of different looks

	black ①	matt chrome onto light grey ②	brushed stainl. steel onto light grey ②	foiled plate by customer design ① or ②
Square 7	1000-U914	1000-U918	1000-U922	on request
Square 8	1000-U915	1000-U919	1000-U923	on request
Triangular 8	1000-U916	1000-U920	1000-U924	on request
Double bit 3	1000-U913	1000-U912	1000-U909	on request
Slot 2x4	1000-U917	1000-U921	1000-U925	on request

Snap-in cam polyamide GF black

H	further H-dimensions on request	Ts = 1.0 - 1.5 *	Ts = 1.5 - 2.0 *	Ts = 2.0 - 2.5 *	Ts = 2.5 - 3.0 *
18		1000-590	1000-591	1000-592	1000-593
22		1000-594	1000-595	1000-602	1000-597
24		1000-598	1000-599	1000-600	1000-601