

Fördertechnik Conveyor Parts

Gabellaschenkett
Drop Forged Fork Link Chains

Steckketten und Zubehör
Drop Forged Rivetless Chains
and Attachments

Förderketten
Conveyor Chains

Kettenräder
Sprockets

Förderanlagen
Engineered Conveyor Systems

Antriebselemente
Drive Elements

Rollenketten
Roller Chains

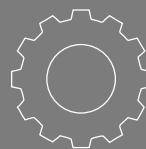
Lager und Laufrollen
Tailor-made Bearings and Rollers

Trommelmotoren
Drum Motors

Scharnierbandketten
Flat Top Chains

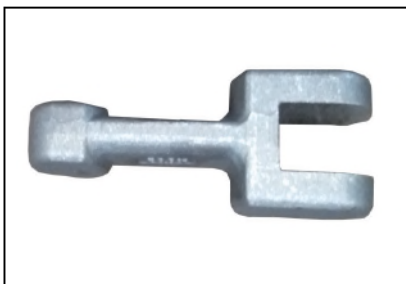
Getriebe
Gears

Transportrollen
Transport Castors



Gabellaschenketten

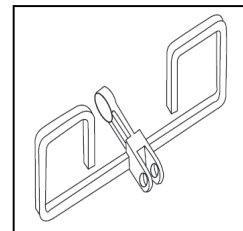
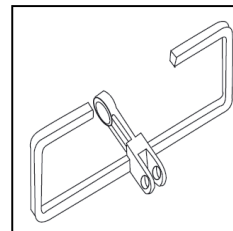
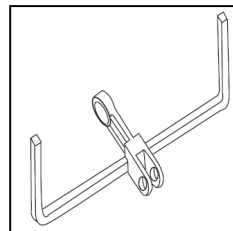
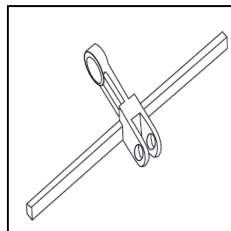
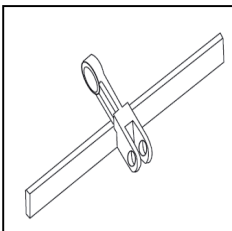
Drop Forged Fork Link Chains



Geschmiedete Gabellaschenketten
Drop Forged Fork Link Chains



Geschmiedete Gabellaschenketten
mit Mitnehmern
Drop Forged Fork Link Chains
with scrapers

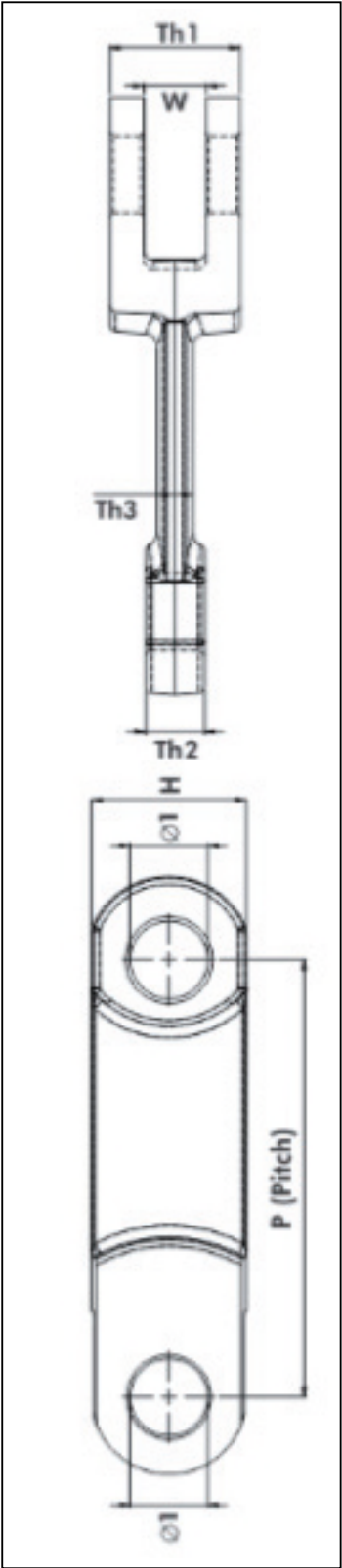
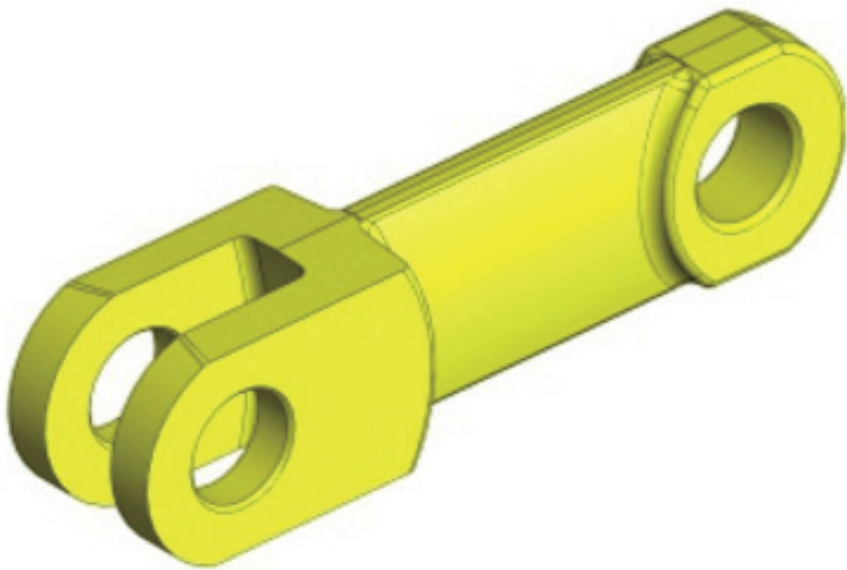


Gabellaschenketten

Drop Forged Fork Link Chains

Pitch / Teilung	Single Forged Strands					
	Dimensions / Abmessungen, mm					
	Th 1	Th 2	Th 3	H	W	Ø1
101.6	24	9	7	36	10	14
101.6	30	13	8	36	14	14
102	25	9	7	36	10	14
102	28	13	8	36	14	14
125	30	13	10	36	14	16
142	45	20	11	40	21	22
142	42	19	11.5	50	20	25
142	54	25	13	50	27	25
142	62	29	15	50	30	25
160	50	25	13	50	26.5	25
200	58	25	15	50	26.5	25
200	70	30	20	60	32	30
216	58	25	18	72	27	35
260	70	30.5	20	76	32	32
Your Own Design / Dimensions / Any Grade Raw Material is also Possible Weitere Bauarten / Abmessungen / Rohmaterialie sind auf Anfrage möglich						

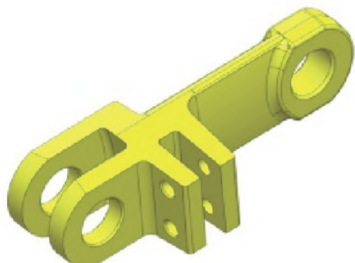
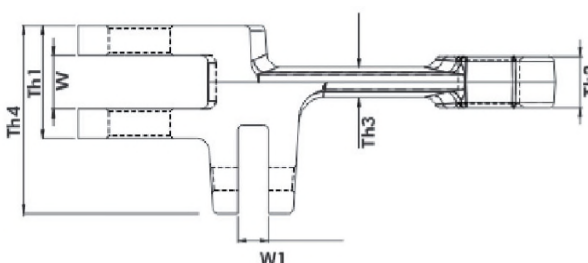
Rohmaterial / Raw Material						
20 McCr5	16 MnCr5	18 MnCrB5	18 NCd5	42 CrMo4	C40	30 HGSA
Case Hardened	Case Hardened	Case Hardened	Case Hardened	Through Hardened	Through Hardened	Through Hardened



Gabellaschenketten

Drop Forged Fork Link Chains



Pitch / Teilung	Double Forged Strands							
	Dimensions / Abmessungen, mm							
	Th 1	Th 2	Th 3	Th 4	H	W	W1	Ø1
142	42	19	11,5	70	50	20	12.5	25
142	62	28.5	15	90	50	30	12.5	25
160	50	25	13	78	50	26.5	12.5	25
200	60	25	15	81	50	27	12.5	25
216	70	30	20	95	60	32	12.5	30
250	70	30	20	95	60	32	16	30
Your Own Design / Dimensions / Any Grade Raw Material is also Possible Weitere Bauarten / Abmessungen / Rohmaterialie sind auf Anfrage möglich								
 								

Circlips
Schließringe



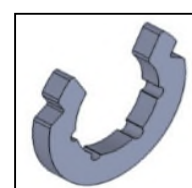
Dia 14



Dia 16



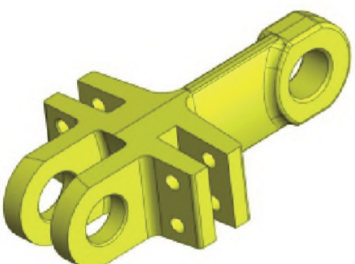
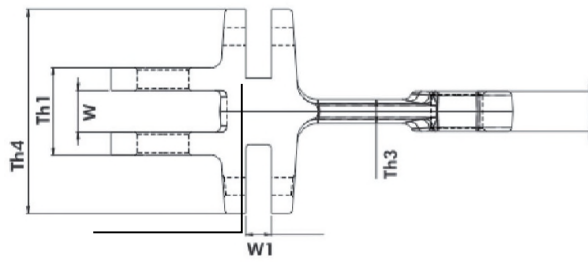
Dia 18



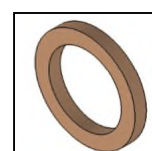
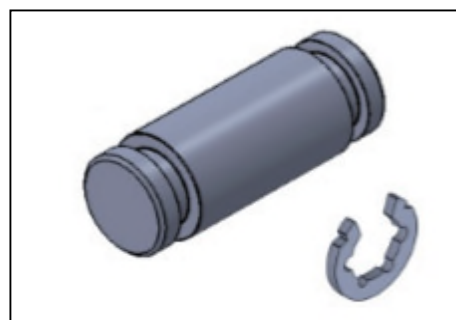
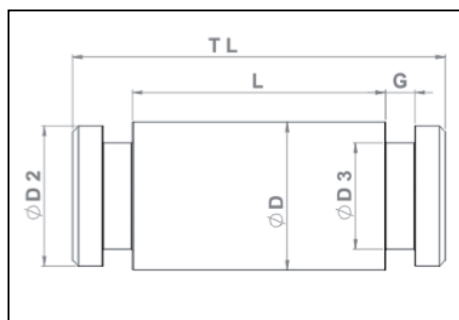
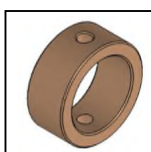
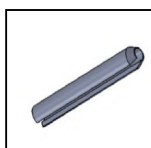
Dia 25



Dia 30

Pitch / Teilung	Triple Forged Strands							
	Dimensions / Abmessungen, mm							
	Th 1	Th 2	Th 3	Th 4	H	W	W1	Ø1
142	42	19	11.5	98	50	20	12.5	25
142	62	28.5	15	118	50	30	12.5	25
Your Own Design / Dimensions / Any Grade Raw Material is also Possible Weitere Bauarten / Abmessungen / Rohmaterialie sind auf Anfrage möglich								
 								

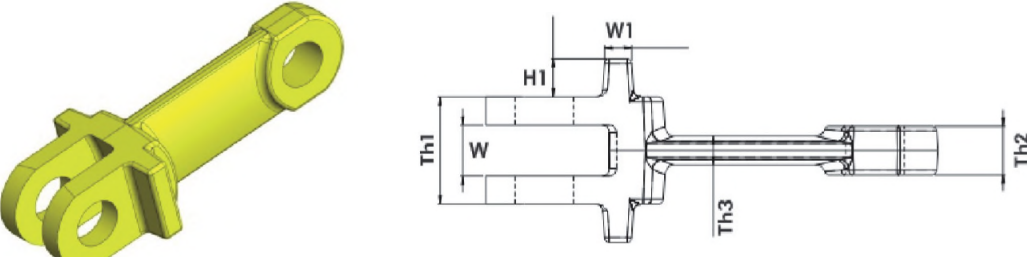
Pins
Bolzen



Gabellaschenketten

Drop Forged Fork Link Chains



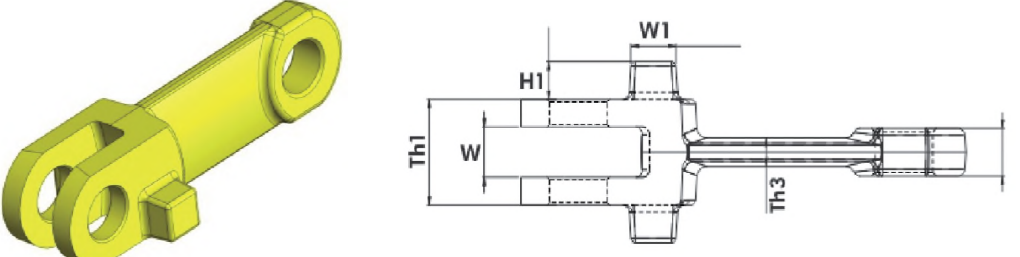
Welding Knob Fork Link Chains								
Pitch / Teilung	Dimensions / Abmessungen, mm							
	Th 1	Th 2	Th 3	Th 4	H	W	W1	Ø1
142	42	19	11.5	50	15	20	12	25
142	62	28.5	15	50	15	30	15	25
260	70	31	20	76	18	32	25	32/40
Your Own Design / Dimensions / Any Grade Raw Material is also Possible Weitere Bauarten / Abmessungen / Rohmaterialie sind auf Anfrage möglich								
								

Circlips
Schließbringe

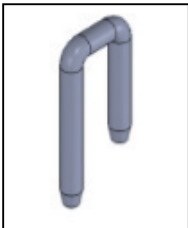


Anti Rotation Pin



Square Welding Knob Fork Link Chains								
Pitch / Teilung	Dimensions / Abmessungen, mm							
	Th 1	Th 2	Th 3	H	H1	W	W1	Ø1
142	42	19	11.5	50	15	20	20 x 20	25
142	62	28.5	15	50	15	30	20 x 20	25
260	70	31	20	76	18	32	30 x 30	32/40
Your Own Design / Dimensions / Any Grade Raw Material is also Possible Weitere Bauarten / Abmessungen / Rohmaterialie sind auf Anfrage möglich								
								

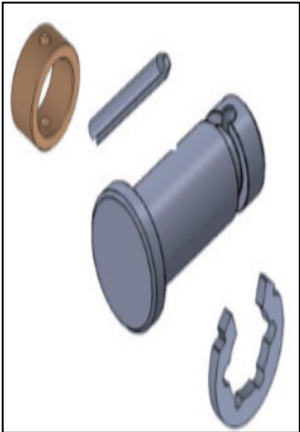
S-Pin



U-Pin



Pin Types
Bolzenausführungen



E-Type-Pin



**EngMec Engineers &
Mechanics GmbH**

**Schwaneweder Straße 139
28779 Bremen**

**Fon ++49 421 69639956
Fax ++49 421 69639955**

**service@engmec.de
www.engmec.de**