

EXMAR



Precision in Stainless Steel

Cutting Ring Fittings acc. EN ISO 8434-1/DIN 2353

- stainless steel 1.4571 / AISI 316 Ti
- series LL, L, S
- from 4 to 42 mm
- nominal pressure up to 800 bar
- with double-sided tube connections
- male connectors with metric, Withworth or NPT thread
- with FPM/FKM seal or metallic sealing
- additional versions available on request



Straight fittings



T fittings



Elbow fittings



Cross fittings

NC Clamping Ring Fittings

- clamping ring made of stainless steel for 24° DIN taper
- from 6 to 25 mm
- nuts silver-plated on the inside for easier and faster assembly

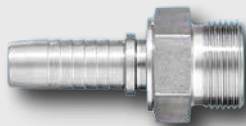


NC clamping ring fittings

Hose Couplings

Ferrules and Nipples

- stainless steel 1.4571 / AISI 316 Ti
- for non-skived hoses



Male nipples



Universal tapered nipples,
with 45° or 90° elbow

- with 24° taper connection, JIC 37°, male thread or SAE



JIC nipples

Flare Tube Fittings

- form fitting connections
- secure tube clamping and excellent seal
- repeated mounting



Flare tube fittings

EXMAR is first choice for expertise in stainless steel

For over 40 years EXMAR has been a leading supplier of stainless steel fittings. A wide range of products adapted to customer needs as well as quality and reliability have convinced numerous customers in industry and trade. Thanks to the extensive know-how and in-house production, EXMAR is flexible thus permitting to offer customised special solutions as well.

Ball Valves and Valves

Ball Valves

- stainless steel
- up to max. 500 bar
- for high and low pressure applications
- pneumatic or electric actuators for high pressure ball valves
- lockable on request



High pressure ball valves

Valves

- shut-off and regulating valves
- pressure gauge valves with and without test connection



High pressure shut-off valves

Non-return Valves

- with double-sided tube connections
- with male connectors
- standard with FPM/FKM sealing and 1 bar opening pressure
- optional FFPM/FFKM or EPDM sealing



Non-return valves

Tube Clamps

- acc. DIN 3015, Part 1, clamp bodies in PP and PA
- from 4 to 76 mm
- installation on weld-on plate or mounting rails



Tube clamps

Also included in our Product Range

Tapered Seal Fittings

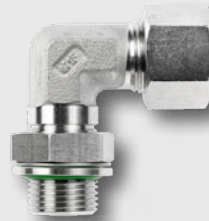
- stainless steel 1.4571 / AISI 316 Ti
- from 6 to 42 mm
- direction adjustable



Tapered seal connections

Adjustable Male Adaptor Elbow Fittings

- compact design
- compensation of small differences in height
- directionally adjustable



Adjustable male adaptor elbow fittings

Banjo Elbow Fittings

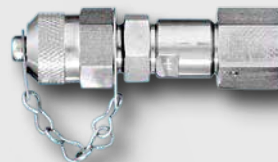
- direction variable mounting
- metallic or elastomeric sealing



Banjo elbow fittings

Connectors with Test Gauge

- with threaded connection M16x2
- for 24° taper
- for tube connection



Connectors with test gauge

as well as

- specially cleaned products, e.g. oil and grease free for use with oxygen
- pre-assembled and packed units

and more - just ask us!

EXmar

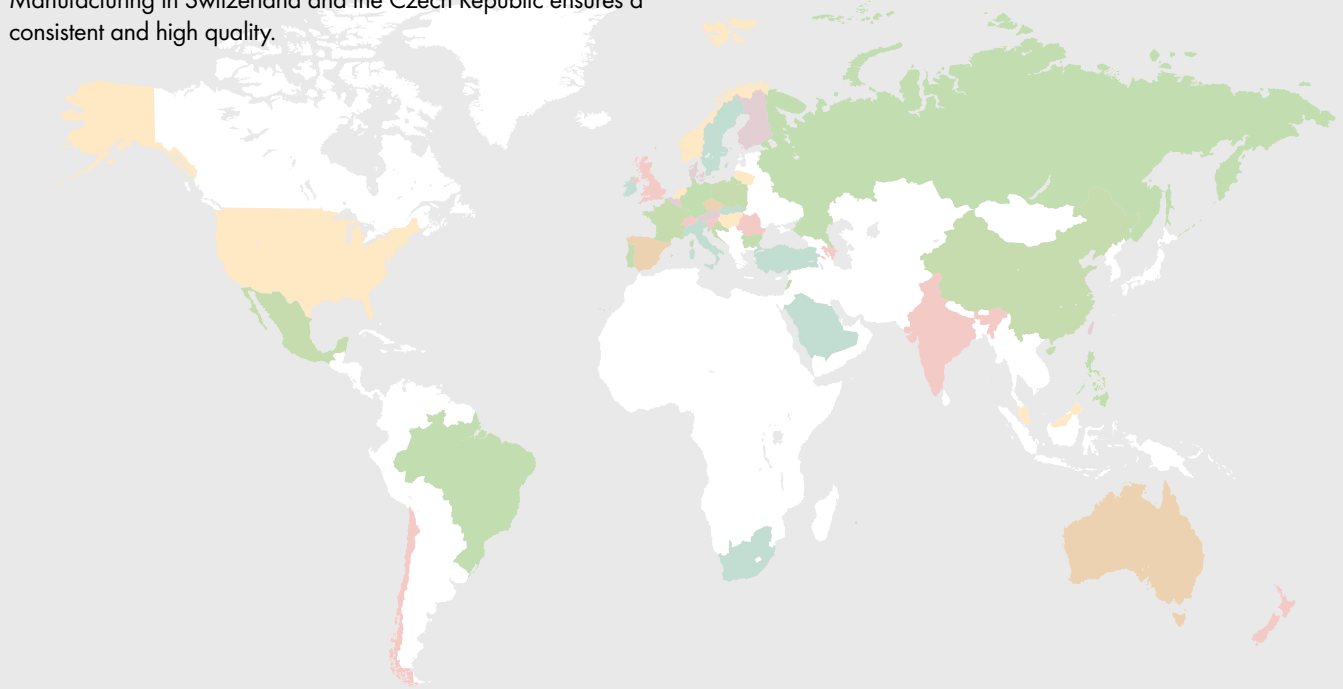
Delivery performance

EXMAR stands out not only because of the excellent quality of its products, but also because the products are highly available, with just-in-time delivery. EXMAR operates a large and comprehensive warehouse. Nearly all catalogue parts are available in large quantities and can be shipped **within 2 days**.

Our customers appreciate this reliable delivery service, as well as the technical competence and support of EXMAR staff.

Global

Since 2002 EXMAR belongs to the Swiss SERTO Group and thus benefits from an international sales network. EXMAR employs trade partners in Germany, Austria, Spain and China or serves customers on location through field representatives. Customers **in over 40 countries** use EXMAR products to their complete satisfaction. Manufacturing in Switzerland and the Czech Republic ensures a consistent and high quality.



EXMAR GmbH

Am Taubenbaum 6, D-61231 Bad Nauheim, Tel. +49 (0)6032 86986-0, Fax +49 (0)6032 86986-13, info@exmar.de
www.exmar.de