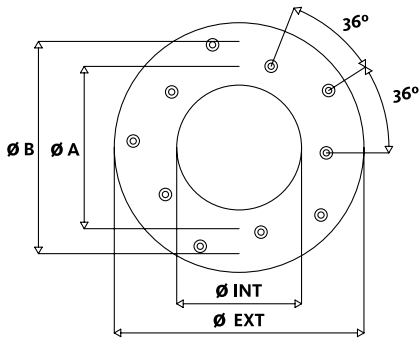


## FRENO TRACTOR EN BAÑO DE ACEITE / TACTOR BRAKE FOR WET APLICATIONS

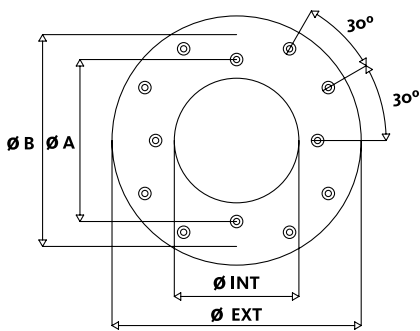
### DISCOS / RINGS

#### 10 AVELLANADOS / 10 COUNTERSUNK



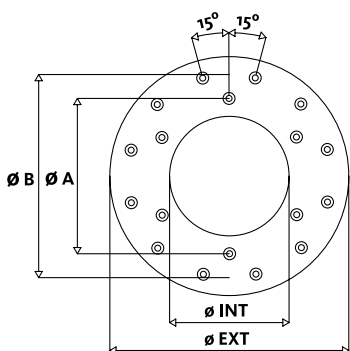
| REFERENCIA   | Ø EXT | Ø INT | Espesor   | Ø A    | Ø B    | Detalle |
|--------------|-------|-------|-----------|--------|--------|---------|
| PART N°      | Ø OUT | Ø IN  | Thickness | Ø A    | Ø B    | Detail  |
| F 15206 12 * | 152.0 | 80.0  | 4.50      | 105.00 | 127.00 | 2       |
| F 15210 11 * | 152.0 | 80.0  | 4.70      | 105.00 | 127.00 | 2       |
| F 15200 10 * | 152.0 | 80.0  | 5.00      | 105.00 | 127.00 | 2       |

#### 12 AVELLANADOS / 12 COUNTERSUNK



| REFERENCIA   | Ø EXT | Ø INT | Espesor   | Ø A    | Ø B    | Detalle |
|--------------|-------|-------|-----------|--------|--------|---------|
| PART N°      | Ø OUT | Ø IN  | Thickness | Ø A    | Ø B    | Detail  |
| F 12704 11 * | 127.0 | 70.0  | 4.50      | 90.00  | 108.00 | 2       |
| F 12705 12 * | 127.0 | 70.0  | 4.70      | 90.00  | 108.00 | 2       |
| F 14211 10 * | 142.0 | 85.0  | 4.50      | 105.25 | 124.00 | 2       |
| F 14205 10 * | 142.0 | 85.0  | 4.70      | 105.25 | 124.00 | 2       |
| F 14201 10 * | 142.0 | 85.0  | 4.80      | 105.25 | 124.00 | 2       |
| F 15206 13 * | 152.0 | 80.0  | 4.50      | 105.00 | 127.00 | 2       |
| F 15210 12 * | 152.0 | 80.0  | 4.70      | 105.00 | 127.00 | 2       |
| F 15203 10 * | 152.0 | 80.0  | 4.80      | 105.00 | 127.00 | 2       |
| F 15200 11 * | 152.0 | 80.0  | 5.00      | 105.00 | 127.00 | 2       |
| F 16508 11 * | 165.0 | 89.0  | 4.50      | 114.50 | 140.00 | 2C      |
| F 16508 12 * | 165.0 | 89.0  | 4.50      | 114.50 | 140.00 | 2C      |
| F 16508 13 * | 165.0 | 89.0  | 4.50      | 114.50 | 140.00 | 2       |
| F 16507 10 * | 165.0 | 89.0  | 4.70      | 114.50 | 140.00 | 2       |
| F 16507 11 * | 165.0 | 89.0  | 4.70      | 114.50 | 140.00 | 2C      |
| F 16507 13 * | 165.0 | 89.0  | 4.70      | 114.50 | 140.00 | 2       |
| F 16503 10 * | 165.0 | 89.0  | 4.80      | 114.50 | 140.00 | 2C      |
| F 16503 11 * | 165.0 | 89.0  | 4.80      | 114.50 | 140.00 | 2       |
| F 16500 11 * | 165.0 | 89.0  | 5.00      | 114.50 | 140.00 | 2       |

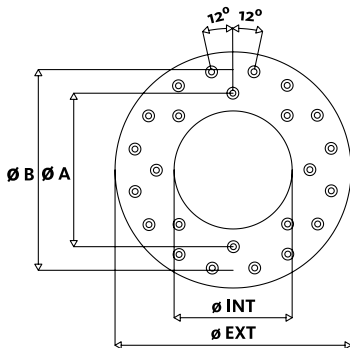
#### 18 AVELLANADOS / 18 COUNTERSUNK



| REFERENCIA   | Ø EXT | Ø INT | Espesor   | Ø A    | Ø B    | Detalle |
|--------------|-------|-------|-----------|--------|--------|---------|
| PART N°      | Ø OUT | Ø IN  | Thickness | Ø A    | Ø B    | Detail  |
| F 17802 10 * | 178.0 | 101.0 | 4.50      | 120.65 | 158.75 | 2       |
| F 17802 11 * | 178.0 | 101.0 | 4.50      | 120.65 | 158.75 | 2C      |
| F 17803 10 * | 178.0 | 101.0 | 4.70      | 120.65 | 158.75 | 2C      |
| F 17803 11 * | 178.0 | 101.0 | 4.70      | 120.65 | 158.75 | 2       |
| F 17800 11 * | 178.0 | 101.0 | 4.80      | 120.65 | 158.75 | 2       |
| F 17805 10 * | 178.0 | 101.0 | 5.00      | 120.65 | 158.75 | 2       |
| F 20081 10 * | 200.0 | 127.0 | 4.70      | 146.00 | 181.00 | 2       |
| F 28003 11 * | 280.0 | 165.0 | 3.50      | 197.00 | 247.50 | 2       |
| F 32701 15 * | 327.0 | 190.0 | 4.00      | 226.00 | 288.50 | 2C      |
| F 32701 16 * | 327.0 | 190.0 | 4.00      | 226.00 | 288.50 | 2C      |

# FRENO TRACTOR EN BAÑO DE ACEITE / **TACTOR BRAKE FOR WET APLICATIONS**

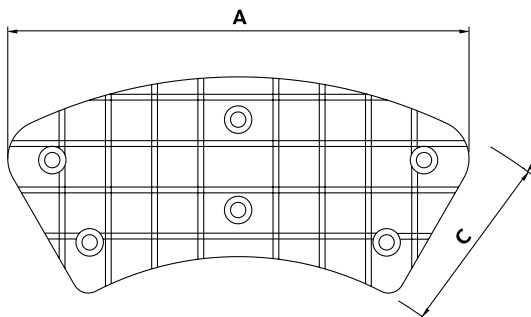
## 24 AVELLANADOS / **24 COUNTERSUNK**



| REFERENCIA     | Ø EXT        | Ø INT       | Espesor          | Ø A        | Ø B        | Detalle       |
|----------------|--------------|-------------|------------------|------------|------------|---------------|
| <i>PART N°</i> | <i>Ø OUT</i> | <i>Ø IN</i> | <i>Thickness</i> | <i>Ø A</i> | <i>Ø B</i> | <i>Detail</i> |
| F 22805 11 *   | 228          | 150         | 4,5              | 171,9      | 209,3      | 2             |
| F 22844 10 *   | 228          | 150         | 4,8              | 171,9      | 209,3      | 2             |

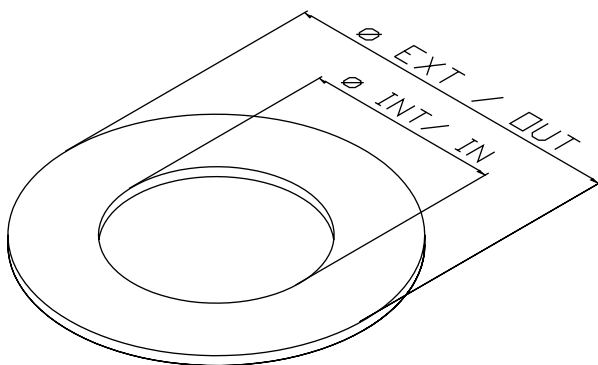
## SECTORES / **SEGMENTS**

### SECTOR 6 AVELLANADOS / **SEGMENT 6 COUNTERSUNK**



| REFERENCIA     | A        | C        | Espesor          |
|----------------|----------|----------|------------------|
| <i>PART N°</i> | <i>A</i> | <i>C</i> | <i>Thickness</i> |
| l 10182 10 4   | 159,6    | 62       | 3,5              |
| l 10181 10 4   | 181      | 77,5     | 3,5              |

## DISCOS **RINGS**



**Ø EXTERIOR: DE 20 A 760 MM**  
**Ø OUTSIDE: 20 TO 760 MM**

**ESPESOR: DE 0,5 TO 25**  
**THICKNESS: 0,5 TO 25**

### MATERIALES / **MATERIAL**

|       |        |        |       |        |          |
|-------|--------|--------|-------|--------|----------|
| SA92  | SA80/M | G95    | GHFM  | MM     | SA80/0,5 |
| FAG/M | NT-DV  | FAG/TW | PG/10 | MM-MEX | SA80/20  |

**PARA MÁS INFORMACIÓN CONSULTE NUESTRO  
CATÁLOGO DE FORROS DE EMBRAGUE Y FRENO TRACTOR.**  
**FOR FURTHER INFORMATION PLEASE ASK FOR CLUTCH  
FACINGS AND TRACTOR BRAKE CATALOGUE**