

# NEW!

INNOVATIVE  
OPERATING  
CONCEPT  
via TABLET PC

# Appliance Tester TG omni 1

With combinable measurement modules  
for testing safety measures in accordance with

- DIN VDE 0701-0702  
DGUV Regulation 3 (BGV A3)
- IEC/EN 60974-4 / DIN VDE 0544-4  
Arc Welders
- IEC/EN 62353 / DIN VDE 0751-1  
Medical Devices and Systems

## Product Highlights

- **Automatic Detection of the test object** with predefined test parameters from the barcode / QR code on the tablet camera
- **Management of test objects and customers** within the app and thus locally
- **Test Report as PDF file**  
incl. Photo documentation when required, on the tablet camera
- **Sending the Test Reports**  
by e-mail, output to WLAN / Bluetooth printer



## Measurements according to standard

<b>Protective conductor resistance</b>	0.000 ... 4.000 Ω Open-circuit voltage 10 V Test current 200 mA DC / optional 10 A DC
<b>Insulation resistance</b>	0.00 MΩ ... 20.00 MΩ Measurement voltage 250 V, 500 V Short-circuit current 1 mA
<b>Integrated residual current shutdown</b>	Differential current > approx. 25 mA
<b>Substitute leakage current</b>	0.00 mA ... 20.00 mA Open-circuit voltage approx. 230 V
<b>Differential current in accordance with DIN VDE 0404-4 for correct evaluation of the harmonics</b>	Test socket: 0.00 mA ... 20.00 mA Differential current clamp DI40 (optional): 0.00 mA ... 40.00 A
<b>Touch current</b>	0.000 mA ... 4.000 mA
<b>Voltage</b>	0.0 V ... 450.0 V AC
<b>Current</b>	0.00 A ... 20.00 A Differential current clamp DI40 (optional): 0.00 A ... 40.00 A
<b>Total power</b>	0 W ... 4.000 W
<b>Protective conductor monitoring</b>	Voltage N-PE > 30 V Floating function via finger contact
<b>Interface to Tablet</b>	Bluetooth
<b>Memory, real time clock</b>	Tablet memory (internal + SD card), Tablet clock
<b>Voltage measurement via probe</b>	0 V ... 400 V AC
<b>Test procedures</b>	PC I, PC II active/passive (with or without main), permanent connection, extension cable, individual measurement

## Technical characteristics

<b>Measuring ranges for functional test</b>	
Voltage	190 ... 250 V AC ± 1 %
Current	0 ... 16 A AC ± 2 %
Active power	0 ... 3700 W ± 2 %
<b>General technical data</b>	
Display	7-inch Tablet PC, 1,024 x 600 pixels
Measurement accuracy	± (5% of meas. value + 1% of end value)
Memory capacity	Tablet internal memory + SD card
Power supply	230 V AC, 50 Hz, 10 VA
Degree of pollution	2
Overvoltage category	CAT II 300 V
Protection degree	IP 20
Electrical safety in accord. with	EN 61010-1 / VDE 0404 / VDE 0411
Dimensions	300 x 250 x 130 mm (W x D x H)
Weight (incl. accessories)	3.1 kg

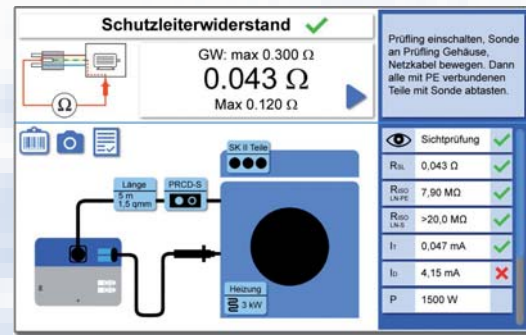
## Optional accessories

Description	Order Number
<b>Tablet PC</b> 7-inch, WLAN, 8 GB, Android 4.4.2, <b>omni App</b> pre-installed and pre-configured	<b>79200 19000</b>
Current clamp for diff. current / current measur. 0...40 A	79200 19010
Active three-phase adapter 16 A	79200 18692
Active three-phase adapter 32 A	79200 18691
Passive three-phase adapter 16/32 A	79200 18690
Brush probe for testing of rotating parts	79100 86049
12x adapter for medical devices	61000 01001
Test clip 4 mm red	79200 19020
Inspection sticker „next inspection date“, Ø 30 mm, 12 pcs	22067 86410

**Gilgen, Müller & Weigert (GMW) GmbH & Co. KG**  
Am Farmbach 4A • D-90556 Cadolzburg  
Phone +49 9103 7129-0  
Fax +49 9103 7129-205/207  
info@g-mw.de • www.g-mw.de

## Menu guidance

Example for testing protective conductor resistance:



screenshot

## Operation and functions

- Data transfer tablet device tester via **Bluetooth**
- Direct scanning of **barcode/QR** code via tablet camera app
- **Photos** of test object can be implemented directly in the test protocol
- Generation of **PDF** test protocols in the tablet
- **Transfer** of PDF test protocols to the **PC or printer** using standard Android tools

## Options

### Option 10A

This option makes it possible to measure the protective conductor resistance with a test current of 10 A DC.

### Option ARC

With this option, arc welders can be tested in accordance with DIN VDE 0544-4 / EN/IEC 60974-4. The current source is loaded via an integrated electronic potentiometer.

### Option RCD 30 mA / RCD 500 mA

With this option, RCDs of types A, B (sensitive to all types of current), PRCD, PRCD-S and PRCD-K can be tested in construction power distributors or extensions (10 mA to 30 mA or 10 mA to 500 mA). The trigger current and the trigger time are tested and documented. For types PRCD-S/K, the additionally installed person protection functions are tested.

### Option MED

This option supplements the already extensive test options by offering measurements and test procedures for medical devices with application parts of type B, BF and CF in accordance with the DIN VDE 0751-1 / EN 62353 norms.

## Order informations

### Appliance Tester / Options

**TG omni 1** Basic Unit with **omni App** and Measuring Module for DIN VDE 0701-0702, without Tablet PC **66000 00000**

### Options (see above)

- 10 A
- ARC
- RCD 30 mA
- RCD 500 mA
- MED

as Measurement Modules - freely selectable and in any combination

