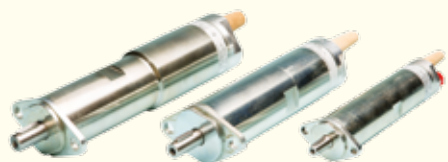




GLOBE AIRMOTORS B.V.
TEST EQUIPMENT B.V.



YOUR GLOBAL FORCE IN AIR POWER
WWW.GLOBE-BENELUX.NL



AIR MOTORS

APPLICATIONS

- Hoists
- Winches
- Mixing
- Ventilators
- Packaging Machinery
- Aftercoolers
- Hose Reels
- Conveyor Belts
- Pump Drives

ADVANTAGES

- Non shock start up
- Instantly reversible
- Compact & lightweight
- Variable speed & torque
- Can be stalled under load
- Resistant in harsh conditions
- Runs on compressed air, natural or sweet gas
- Intrinsically safe & explosion proof
- Certification according to ATEX II Cat.2 G&D
- Vane motors have ATEX I & II



VANE MOTOR



Output at Pmax. 7 bar

Type	max. RPM	H.P.	kW	Start Torque in/LBS	Start Torque Nm
V1	6000	0.6	0.44	8	0.9
V2	4000	1.1	0.82	20	2.3
V4	4000	2.8	2.10	40	5.0
V6	3000	4.6	3.40	72	8.0
V8	3000	7.2	5.40	150	17.0
V10	2400	12.8	9.50	336	36.0
V12	1800	19	14	1200	58

Oil-free

V1 NL	4500	0.44	0.37	4	0.4
V2 NL	3000	0.76	0.54	9	1.1
V4 NL	3000	2.1	1.40	19	2.2
V6 NL	2250	2.9	2.00	33	3.3
V8 NL	2250	4.5	3.40	72	8.0
V10 NL	1800	8.8	6.20	144	15.0

STAINLESS STEEL VANE MOTOR



Type	max. RPM	H.P.	kW	Start Torque in/LBS	Start Torque Nm
V1 I	6000	0.6	0.44	8.0	0.9
V4 I	4000	2.8	2.1	40	5.0
V6 I	3000	4.6	3.4	72	8.0

Type		max. RPM	H.P.	kW	Start Torque in/LBS	Start Torque Nm
V4	7:1	430	1.7	1.3	176	20
	15:1	200	1.7	1.3	308	35
	30:1	100	1.6	1.2	467	53
	45:1	65	1.5	1.1	591	67
V6	67:1	45	1.3	1.1	705	80
	15:1	200	3.5	2.6	617	70
	28:1	105	3.4	2.5	970	110
V8	46:1	65	3.1	2.3	1410	160
	14:1	215	5.2	3.9	1102	125
	30:1	100	5.0	3.7	1763	200
V10	23:1	105	9.3	6.9	3570	405

VANE MOTOR WITH GEARBOX



COMPACT PISTON MOTOR



ADVANTAGES

- Very low air consumption
- High efficiency
- High torque at low speeds
- Oil-free operation
- Long service life
- Optional Waterproof
- Optional stainless steel

Output at Pmax. 8 Bar

Type	max. RPM	H.P.	kW	Start Torque in/LBS	Start Torque Nm
RM004	60 - 800	0.15	0.11	26	3
RM012	50 - 350	0.23	0.16	124	14
RM024	50 - 350	0.44	0.33	248	28
RM048	50 - 350	0.82	0.60	514	58

RADIAL PISTON MOTOR



ADVANTAGES

- Modular assembly possible: motor, brake, gearbox & gearbox available
- Rugged design
- Resistant to dirty damp conditions

Output at Pmax. 8 Bar

Type	max. RPM	H.P.	kW	Start Torque in/LBS	Start Torque Nm
RM110	2400	2.4	1.7	80	9
RM210	2400	5.5	4.0	247	28
RM310	2400	10.0	7.5	414	47
RM410	2000	19.0	14.0	881	100
RM510	1500	31.0	22.0	1940	220
RM610	2000	32.0	22.0	2116	240

COMPACT VANE MOTOR



Available in stainless steel

Output at Pmax. 7 Bar

Type	max. RPM	H.P.	kW	Start Torque in/LBS	Start Torque Nm
2M01	19000	0.36	0.27	3.5	0.4
2M02	3700	0.36	0.27	18.0	2.0
2M02R	3600	0.32	0.24	18.0	2.0
2M05R	1400	0.32	0.24	45.0	5.0
2M10R	700	0.32	0.24	90.0	10.0
2M12	710	0.36	0.27	106.0	12.0
5M01	14000	0.90	0.67	13.0	1.5
5M05R	3250	0.90	0.67	53.0	6.0
5M34R	420	0.90	0.67	300	34
5M43	450	0.90	0.67	379.0	43.0
9M70R	440	1.30	1.00	617.0	70.0

VANE MOTOR WITH PLANETARY GEARBOX



Output at Pmax. 7 Bar

Type	max. RPM	H.P.	kW	Start Torque in/LBS	Start Torque Nm
VA1PFG	3 to 100	0.6	0.44	24 - 800	3 to 90
VA2PFG	3 to 100	1.1	0.82	60 - 2000	7 to 400
VA4PFG	3 to 70	2.8	2.1	120 - 2800	15 to 280
VA6PFG	3 to 50	4.6	3.4	216 - 3600	24 to 400

ADVANTAGES

- Compact
- Robust
- Can be overloaded
- Radial & axial loads permitted

PNEUMATIC BRAKE



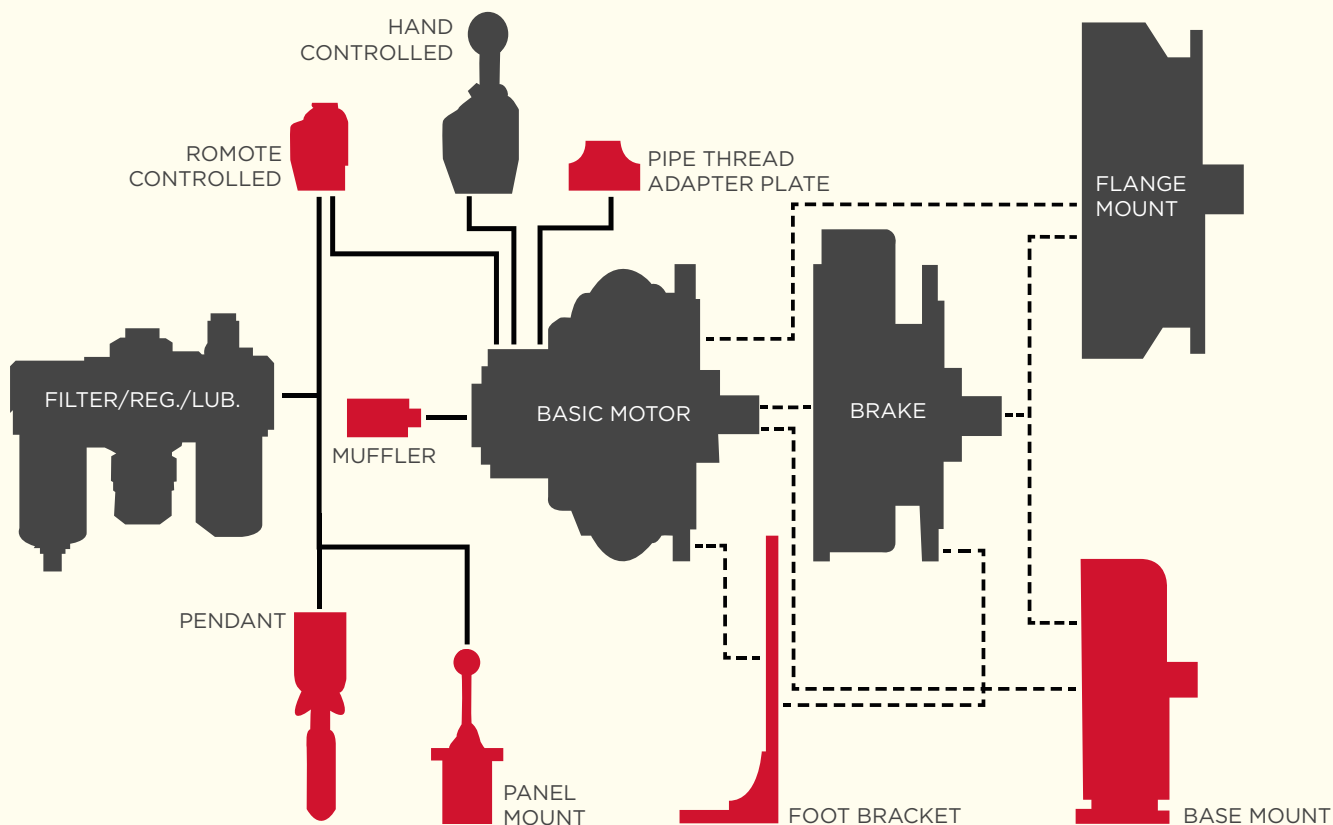
Output at Pmax. 8 Bar

Type	max. RPM	H.P.	kW	Start Torque in/LBS	Start Torque Nm
BN71	VS4C	127	14	50	3.4
BN90	VS6C	263	29	50	3.4
BN90	VS8C	263	29	50	3.4
BN100	VS10C	680	75	50	3.4

ADVANTAGES

- Compact dimensions
- Spring engaged, air released
- Certified to ATEX II Cat. 2 GD T3.
- Used as a holding brake
- Easy maintenance
- IEC standard flanges (Input and output)
- Low maintenance, few parts

OPTIONS



HIGH PRESSURE TEST PUMPS & HIGH PRESSURE TEST SYSTEMS

APPLICATIONS

Pressure testing of:

- Hoses
- Valves
- Piping
- Gas cylinders
- Aircraft components
- Isostatic presses
- Injecting liquids

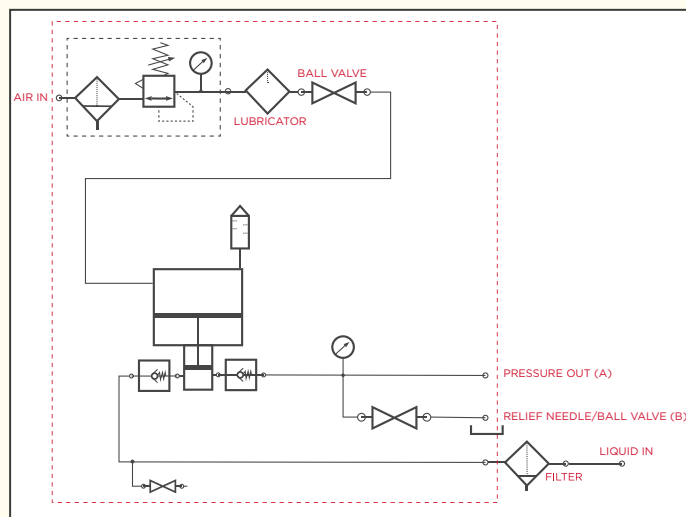
ADVANTAGES

- No energy consumption when end pressure is reached
- Pre-set test pressure
- Explosion proof (ATEX)
- Robust
- Mobile
- Reliable

All systems are ready for use and are equipped with:

- Filter, regulator, lubricator (FRL unit)
- On / off ball valve
- Stainless steel inlet filter, manifold block and pressure relief valve
- Stainless steel pressure gauges and tubing

HIGH PRESSURE TEST PUMPS & HIGH PRESSURE TEST SYSTEMS



Model	Ratio	Max. air drive (bar)	Max. outlet (bar)	Displacement /cycle (L.)	Max. flow rate (l/min)	Inlet connection	Outlet connection
APU-Unicub-A	4.3:1	7	26	0.028	14.0	G 1/2"	G 1/2"
APU-Unicub-B	11.9:1	7	70	0.010	5.0	G 1/2"	G 1/2"
APU-Unicub-C	26.7:1	7	157	0.0045	2.4	G 1/2"	G 1/2"
APU-Unicub-D	47.5:1	7	275	0.0025	1.4	G 1/2"	G 1/2"
APU-Unicub-E	68.4:1	7	430	0.0017	0.9	G 1/2"	G 1/2"
APU-Unicub-F	107:1	7	655	0.0011	0.6	G 1/2"	G 1/2"
APU-Unicub-G	163.8:1	7	982	0.0007	0.4	G 1/2"	G 1/2"

Model	Ratio	Max. air drive (bar)	Max. outlet (bar)	Displacement /cycle (L.)	Max. flow rate (l/min)	Inlet connection	Outlet connection
APU-SC10-5-5	5:1	7	35	0.090	30	1" NPT	½"NPT
APU-SC10-5-10	10:1	7	70	0,040	23	1"NPT	½ "NPT
APU-SC10-5-12	12:1	7	84	0,360	18	1"NPT	½"NPT
APU SC10-5-20	20:1	7	140	0,220	11	1"NPT	½"NPT
APU-SC10-5-25	25:1	7	175	0,016	9	½"NPT	½"NPT
APU SC10-5-30	30:1	7	210	0,014	7,5	½"NPT	½"NPT
APU-SC10-5-35	35:1	7	245	0,012	6	½"NPT	½"NPT
APU-SC10-5-55	55:1	7	385	0,007	3,5	½"NPT	½"NPT
APU-SC10-5-70	70: 1	7	490	0,006	3	½"NPT	½"NPT
APU SC10-5-85	85:1	7	595	0,005	2,9	½ NPT	½"NPT
APU-SC10-5-105	105:1	7	630	0,004	1,9	½"NPT	½"NPT
APU-SC10- 5-140	140:1	7	980	0,003	1,5	½"NPT	9/16"-18 UNF
APU-SC10-5-195	195:1	7	1365	0,002	1,2	½"NPT	9/16"-18 UNF
APU-SC10-5-280	280:1	7	1960	0,0015	0,7	½"NPT	9/16"-18 UNF
APU-SC10-5-440	440:1	7	2880	0.00100	0,4	½"NPT	9/16"-18 UNF
APU-SC10-5-555	555:1	7	3885	0,00078	0,3	½"NPT	9/16"-18 UNF

CUSTOM BUILD FOR SPECIAL APPLICATIONS

OUR PRODUCT RANGE INCLUDES:

- Pressure and burst pressure testing systems for hoses etc.
- Test systems for valves
- Test systems for hoses and tubes
- Booster systems for high pressure gas
- Customized systems



AIR DRIVEN HIGH FLOW TEST SYSTEMS

Test systems with pressure recorder, up to 18 l/min, 700 bar



GAS BOOSTER

Single & double stage gas booster up to 1725 bar



SPECIAL SYSTEMS FOR BOLT TENSIONING

Up to 3000 bar



TEST SYSTEM FOR TESTING HOSES

From 20 to 4500 bar



GLOBE AIRMOTORS B.V.



GLOBE TEST EQUIPMENT B.V.

Boerhaaveweg 9-11
NL 2408 AD Alphen aan den Rijn

Tel. +31 172 426 608
Fax. +31 172 426 607

www.globeairmotor.com
www.globe-benelux.nl
info@globebenelux.nl