



# Embracing the Era of IoT

Providing secure, rugged solutions  
for the connected world.



# Company Profile



200+ Employees  
45%+ Engineering



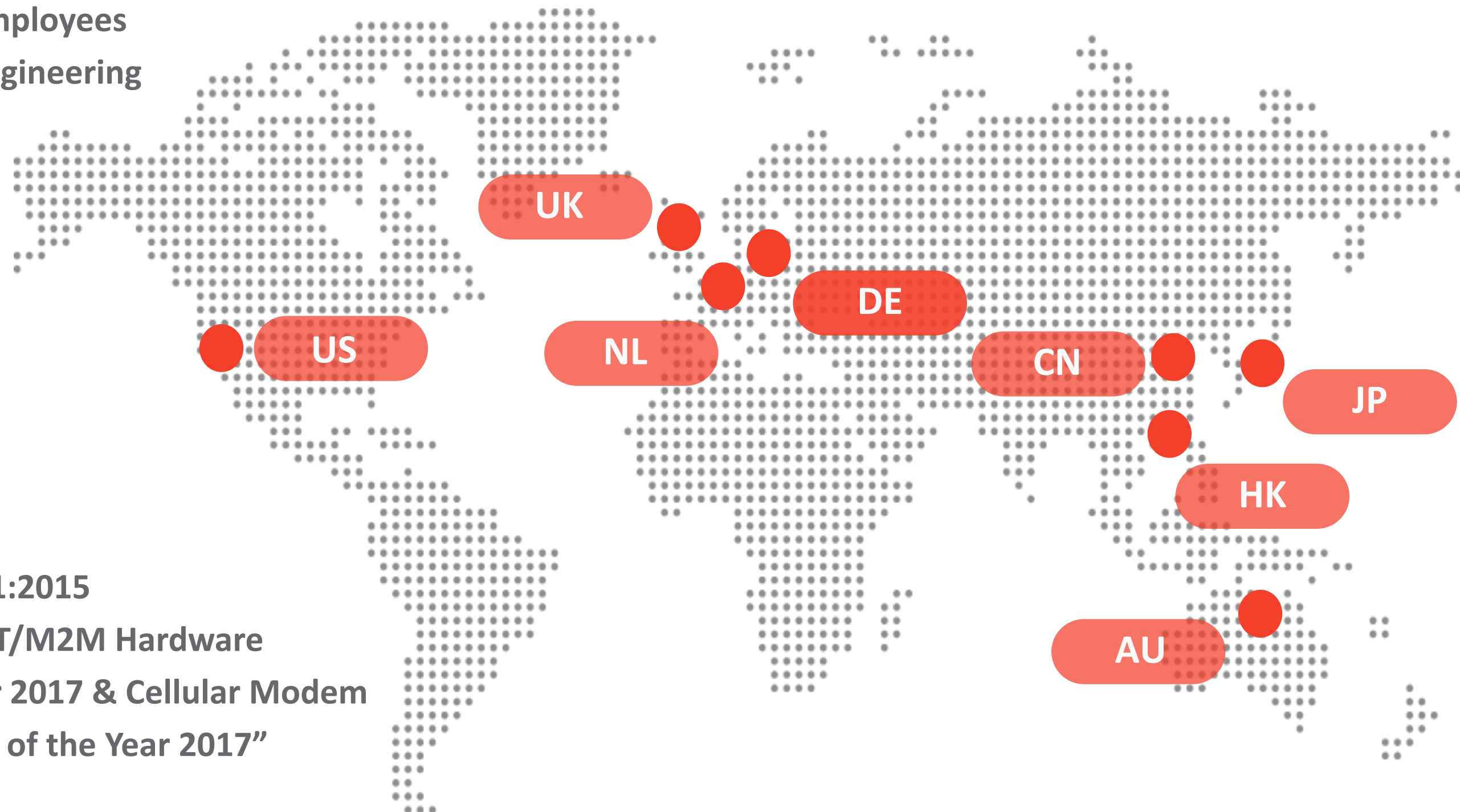
Global Certifications



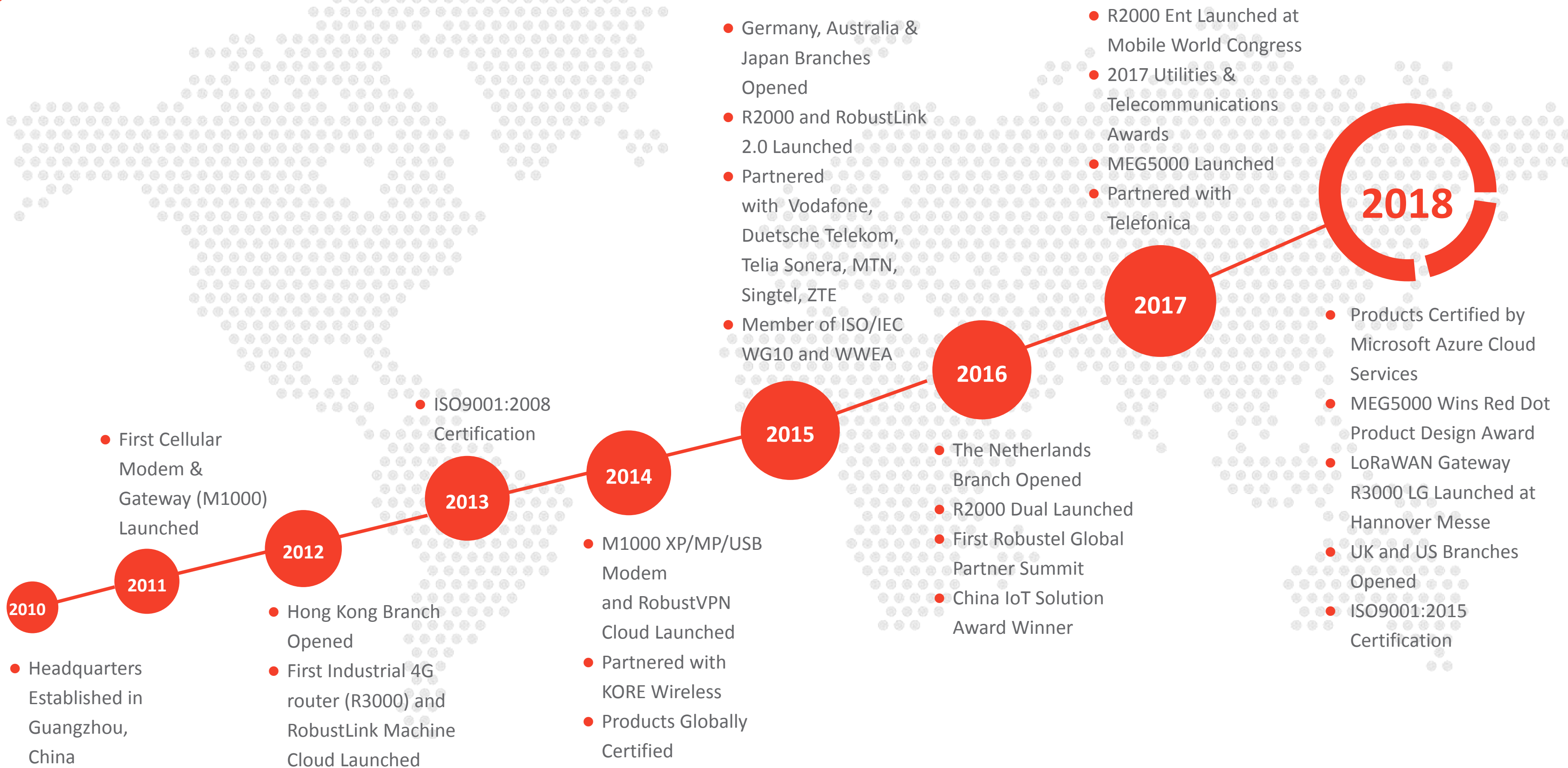
ISO 9001:2015  
“Best IoT/M2M Hardware  
Provider 2017 & Cellular Modem  
Supplier of the Year 2017”



120+ Countries  
Deployment



# Company Milestones





# The Robustel IoT Device Portfolio



## Core Competencies

Strong RF+EMC  
IP3x-6x Housing

Cellular + LPWA  
Gateway & Sensor

RobustOS  
IoT SaaS

Global Distributor  
Networks

Global Certifications

# Uncompromised Hardware Quality

- Robustel is **ISO 9001:2015** certified.
- Robustel regularly audits suppliers, implement a strict supplier and component selection process + incoming control.
- Precise design and strict test for EMC, safety, high/low temperature and vibration.
- Products have global approvals for both safety and network compatibility.
- 100% of units undergo 60°C- 48 hours aging testing.
- Over 100k units shipped during the last 2 years designated for mission critical scenarios and inhospitable environments.



Total Quality Control

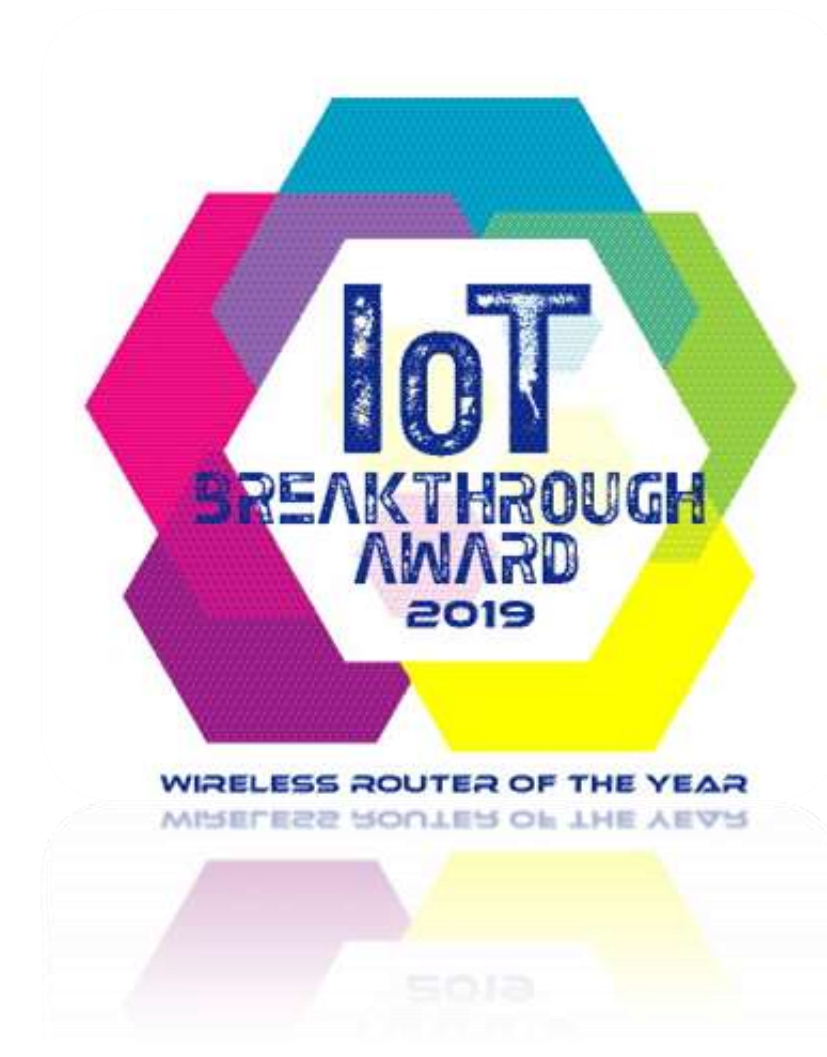
# Robustel is the proud recipient of:



Annual China IoT Solutions  
Award



2017 Utilities &  
Telecommunications Awards



IoT Breakthrough Award 2019



# Robustel is the proud recipient of:



reddot award 2018  
winner

Robustel **MEG5000** Wins  
Red Dot Product Design Award 2018

**Why partner  
with Robustel?**





# An industrial solution for longevity

## – The false economy of low quality/low cost solutions for IoT



1. Wide temperature range
2. High humidity tolerance
3. Dust protection
4. Vibration resistant
5. Higher EMC protection

**Initial device  
Cost High**

**Total Lifecycle  
Cost Low**

Designed to be  
replaced

Customer Complaints

RMA rate high

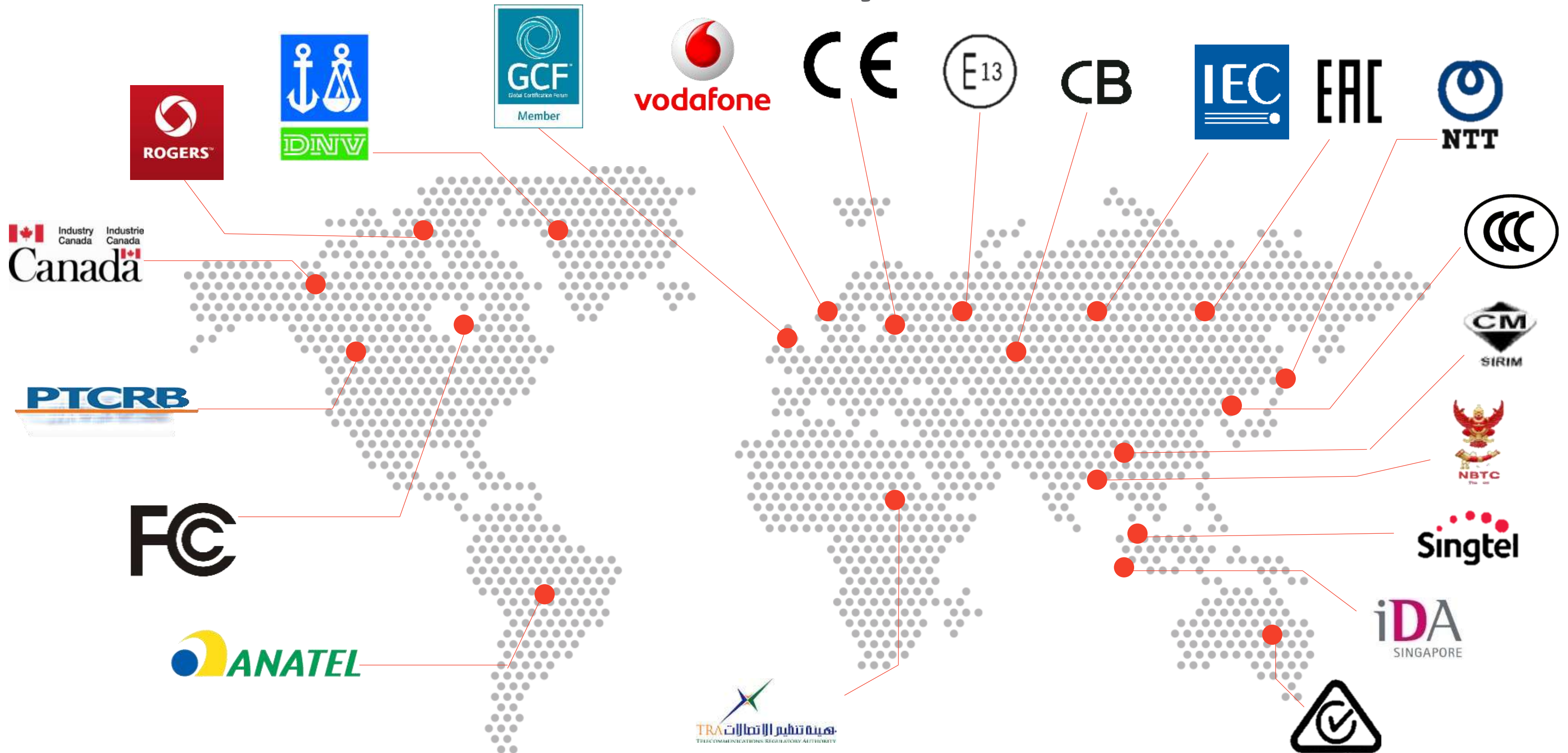
Lack of reliable  
comms

High cost of  
replacement and  
truck rolls

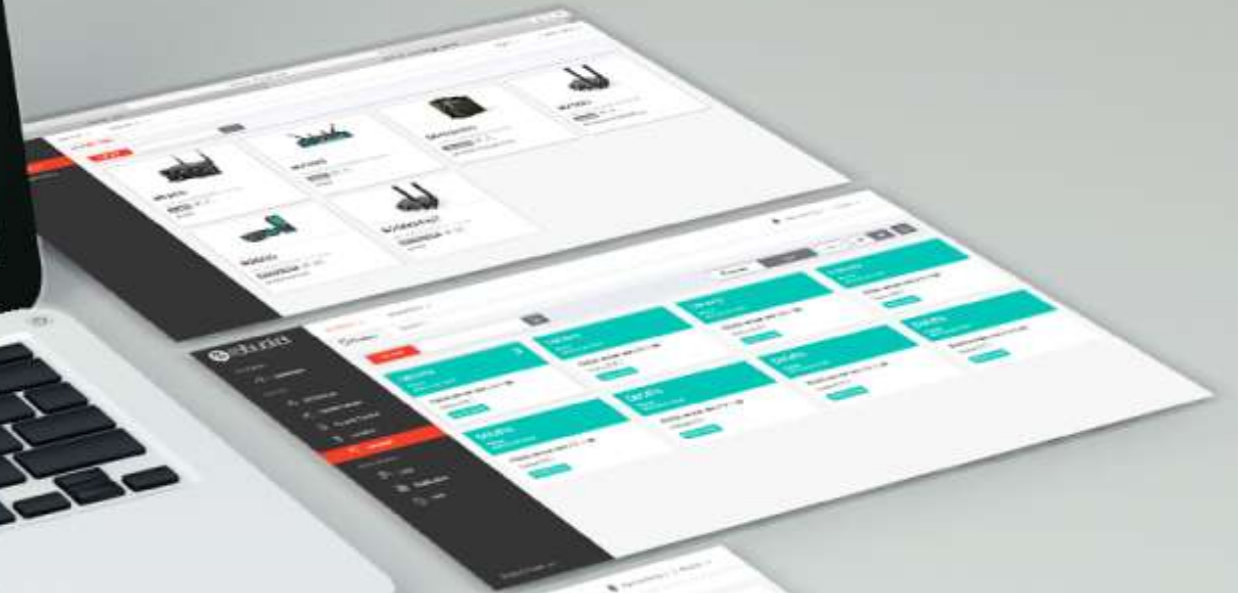
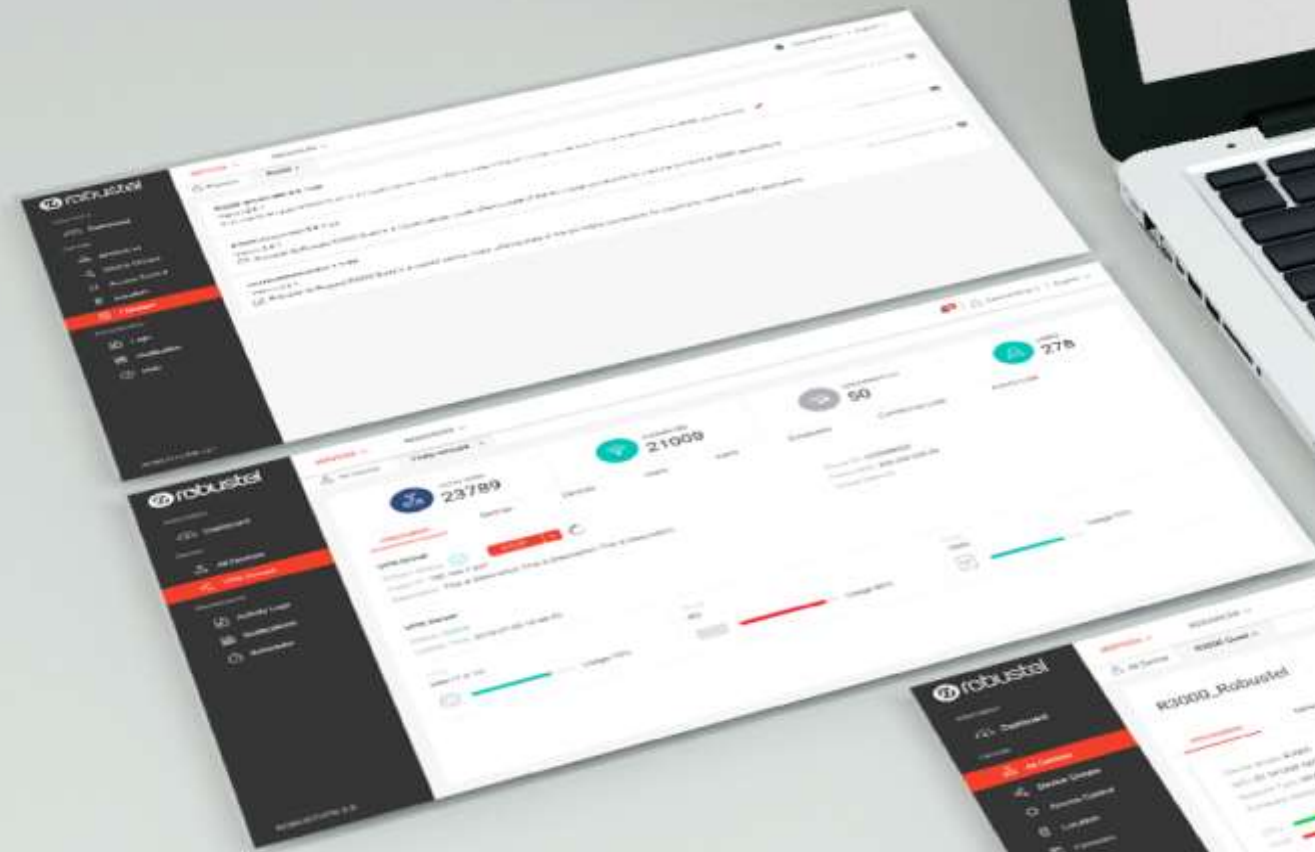
Initial device cost low



# Robustel's Products are Globally Certified







IoT Software Solutions





**robustel**  
Cloud Manager Service

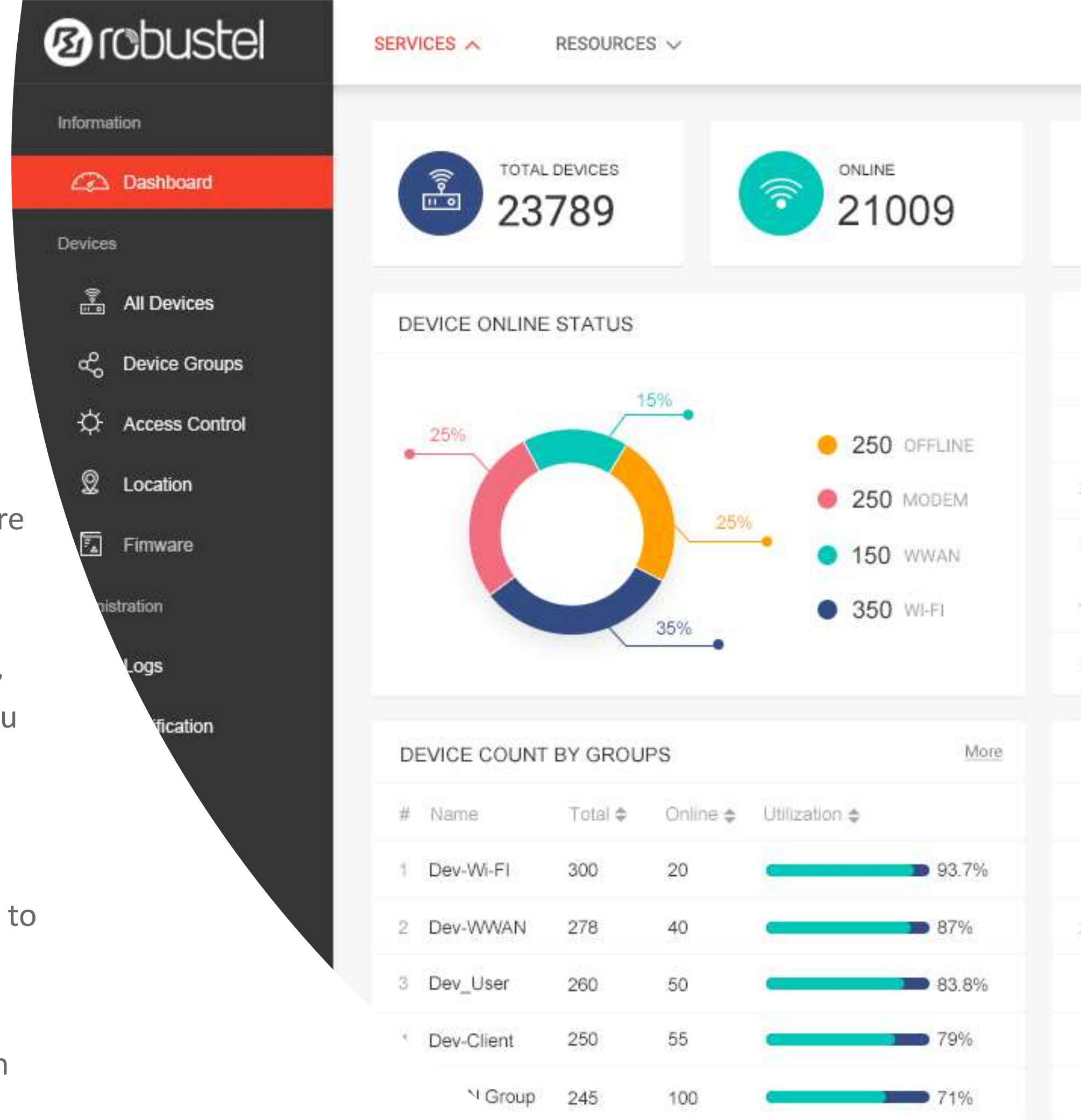
## *The next evolution of software delivery from Robustel*

Robustel Cloud Manager Service (RCMS) is a modular IoT software platform compatible with Robustel products.

Replaces older 'stand-alone' software from Robustel (Robustlink, RobustVPN) and replaces them with app equivalents allowing you to pick and choose the software you need today and upgrade instantly for features you need in the future.

All Robustel customers will have access to RCMS and will be able to pay for additional functionality and services online.

Can be delivered as a local private installation (RCMS Stack) or an online cloud service maintained and managed by Robustel.





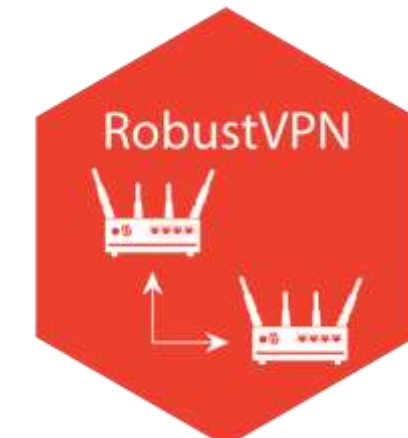
# Multi Platform Strategy

- In house offer

RobustLink 2.0 & RobustVPN



Device Management



Remote Control

- 
- Third Party Platform integrated



<http://cumulocity.com/partners/>



- 
- On going Integration



# Where are Robustel solutions deployed today?



## Industrial Networking

**Fixed assets and infrastructure in energy & industrial**

- Electric Distribution Automation
- Green Energy & E-Mobility
- Oil & Gas
- HVAC & Building Automation
- Traffic Control
- Street Light Control
- Water/Wastewater Control
- Industrial Machine Monitoring
- Agricultural Machine Monitoring
- Telecom BTS Monitoring



## Enterprise Networking

**Primary or failover connectivity for distributed enterprise and retail**

- ATM
- Vending
- Kiosks
- Lotto/Gaming
- Ticket Machines
- Medical Point of Care
- Digital Signage
- Branch Offices/Shops
- Security



## Mobile Networking

**Telematics for fleets, bus, train, transit, public safety**

- Transit Bus
- Commuter Rail
- Commercial Rail
- Marine
- Public Safety
- Heavy Machinery
- WiFi Sharing
- PTC (Positive train control)



# IoT Solution Reference customers



SIEMENS



# Our Operator Partners





# THANK YOU!



Please contact us:  
[info@robustel.com](mailto:info@robustel.com)  
[www.robustel.com](http://www.robustel.com)  
+86-20-29019902