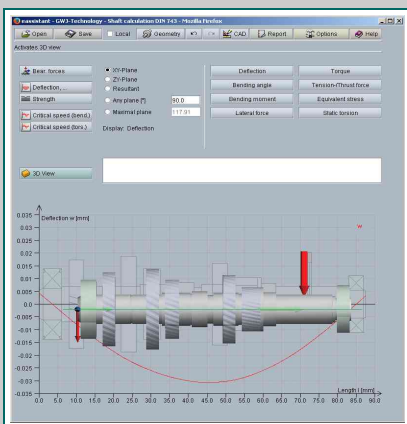
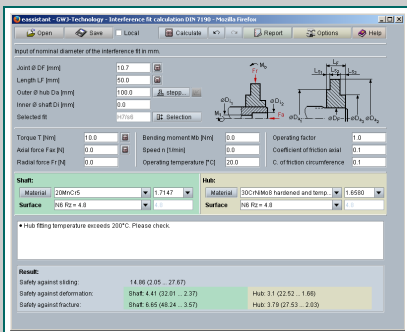
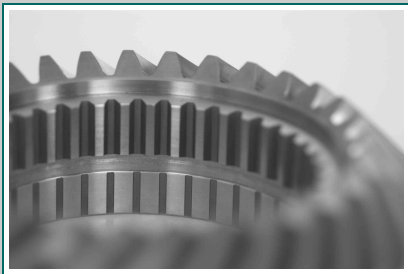
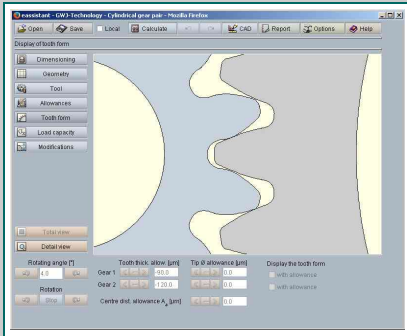


eAssistant - Web-based Software for Machine Elements



eAssistant - A Clever Way to Calculate!

eAssistant is a web-based calculation software for the mechanical engineering. The software allows for a fast, easy and professional calculation, design and optimization of an extensive range of machine elements, for example:

- Shafts
- Bearings
- Gears
- Bevel gears
- Shaft-hub-connections
- Bolted joints
- Timing belts
- Springs plus many more.



eAssistant combines the advantages of standard calculation software and innovative and powerful web-based technology.

Intelligent eAssistant CAD Plugins

eAssistant 3-D CAD plugins offer a great way to connect calculation and design. The CAD plugins are available for different CAD systems. 3-D CAD models can be automatically created with just a mouse click. In addition, eAssistant supports also the output format DXF.

Pay-As-You-Go: Pay Only For What You Use!

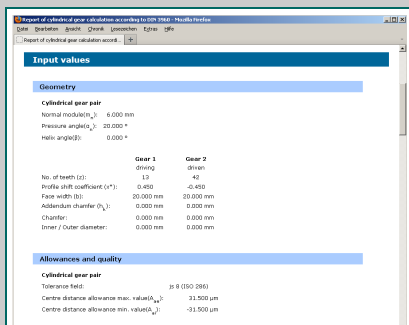
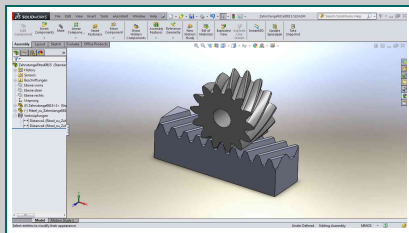
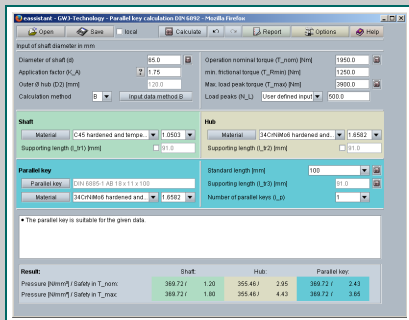
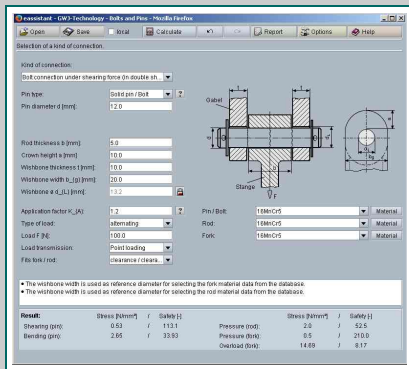
Benefit from a flexible cost structure: time limit accounts for occasional calculation tasks or flat rates for a frequent use.

- No invest or maintenance costs
- Online calculation from 32 cent per minute*

eAssistant Advantages

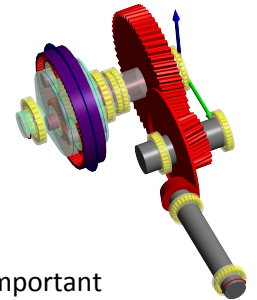
- Start immediately without any installation
- Get always the latest version, worldwide, round the clock
- Use accepted calculation standards, such as DIN, ISO or VDI
- Save valuable time

*refers to the price of the 100 hour package



What eAssistant Offers

- Comfortable and practice-oriented calculations
- Easy and intuitive handling
- Various dimensioning functions
- Redo/undo function
- Automatical re-calculation
- Project management to open and save calculations
- Calculation reports in HTML and PDF format with all important inputs and results
- Detailed calculation results to verify the calculation
- Extensive material and geometry selection
- Graphical representations to gain better understanding of the calculation results
- Language selection: German or English
- System calculation „SystemManager“ with a click



Over the last few years, eAssistant has become the market leading web-based calculation software and is being used by many leading companies worldwide.

Clever Solutions Under One Roof

Focusing on mechanical engineering, GWJ Technology, headquartered in Braunschweig, Germany, stands for high quality products and innovative software development. With keen insight and high energy, we put our utmost efforts, skills, knowledge and passion into our work to achieve top quality products.

In addition, we also share our knowledge and insights through regular seminars, workshops and engineering services.

See For Yourself!

For further information, please feel free to contact us by phone +49 (0) 531 129 399-0 or email info@gwj.de. If you would like to learn more about our products, please do not hesitate to contact us for a free web presentation.

