

Relative pressure transmitter type 520



Pressure range

-1 ... 9 bar / 0 ... 2.5 – 1000 bar



The compact type 520 pressure transmitter is based upon the Huba Control developed thick film technology where the pressure measuring cell is fully welded. This transmitter meets the high burst protection demands and is suitable for the use in all types of refrigerants including ammonia.

- Compact, rugged construction
- Welded without sealing parts, no elastomer seals
- Large selection of connections available.
- Saving time by quick cable mounting by the customer with swift connector

Technical overview

Pressure range

Relative -1 ... 9 bar / 0 ... 2.5 - 1000 bar

Operating conditions

| | |
|--------------------|--|
| Medium | Liquids, gases and refrigerants (incl. ammonia) |
| Temperature | Medium -40 ... +135 °C (Ⓜ -30 ... +120 °C) Ambient -30 ... +85 °C (Ⓜ -25 ... +85 °C) Storage -50 ... +100 °C |
| Tolerable overload | ≤ 6 bar 5 x fs > 6 bar 3 x fs (max. 1500 bar) |
| Rupture pressure | ≤ 6 bar 10 x fs > 6 bar 6 x fs (max. 2500 bar) |

Materials

| | |
|----------------------------------|--|
| Cover | Stainless steel 1.4404 / AISI 316L (inside thread Schrader 1.4305 / AISI 303 only) |
| Plug accommodation | Polyarylamide 50% GF UL 94 V-0 |
| Materials in contact with medium | Pressure connection Sensor Stainless steel 1.4404 / AISI 316L (inside thread Schrader 1.4305 / AISI 303 only) Stainless steel |

Electrical overview

| | Output | Power supply | Load | Current consumption |
|------------------------------|--|------------------------------|---|---------------------|
| 2 wire | 4 ... 20 mA | 7 ... 33 VDC | < $\frac{\text{supply voltage} - 7 \text{ V}}{0.02 \text{ A}}$ [Ohm] | < 23 mA |
| | 4 ... 20 mA | 10 ... 30 VDC | < $\frac{\text{supply voltage} - 10 \text{ V}}{0.02 \text{ A}}$ [Ohm] | < 23 mA |
| | 0 ... 5 V | 7 ... 33 VDC | >10 kOhm / < 100 nF | < 7 mA |
| 3 wire | 1 ... 6 V | 8 ... 33 VDC | >10 kOhm / < 100 nF | < 7 mA |
| | 0 ... 10 V | 12 ... 33 VDC | >10 kOhm / < 100 nF | < 7 mA |
| | 0 ... 10 V | 12 ... 33 VDC / 24 VAC ± 15% | >10 kOhm / < 100 nF | < 7 mA |
| | ration. 10 ... 90% | 5 VDC ± 10% | >10 kOhm / < 100 nF | < 7 mA |
| | ration. 10 ... 90% | 5 VDC ± 10% | >10 kOhm / < 100 nF | < 7 mA |
| Polarity reversal protection | Short circuit proof and protected against polarity reversal. Each connection is protected against crossover up to max. supply voltage. | | | |
| Insulation voltage | standard | | | 500 VDC |

Dynamic response

| | |
|---------------|-------------------|
| Response time | < 2 ms, 1 ms typ. |
| Load cycle | < 100 Hz |

Electrical connection

| | Protection standard | Protection class |
|---|---------------------|------------------|
| Swift connector with or without cable 1.5 / 2.0 / 3.0 / 5.0 m (PVC spec.) | IP 67 | III |
| Connector DIN EN 175301-803-A or C (industrial standard 9.4 mm) | IP 65 | III |
| Metri Pack Serie 150 | IP 67 | III |
| Connector M12x1 | IP 67 | III |
| Brads | IP 65 | III |
| Connector RAST 2.5 (3 wire, only) | IP 00 | III |

Pressure connection

| | | |
|-----------------------------------|---------------------------------------|--|
| Inside thread | $\frac{7}{16}$ - 20 UNF | without or with Schrader |
| | $\frac{1}{2}$ - 14 NPT | (≤ 60 bar) |
| | G $\frac{1}{4}$ | with O-Ring seal FPM (-30 ... +135 °C) |
| Outside thread | $\frac{7}{16}$ - 20 UNF | sealing cone |
| | $\frac{1}{4}$ - 18 NPT | |
| | $\frac{7}{16}$ - 20 UNF | sealed at back SAE 4 with O-Ring seal FPM (-20 ... +135 °C) |
| | G $\frac{1}{4}$ | sealed at back DIN 3852-E with profile seal ring in FPM (-30 ... +135 °C) |
| | G $\frac{1}{4}$ | sealed at back and manometer (combi) with profile seal ring in FPM (-30 ... +135 °C) (≤ 60 bar) |
| | R $\frac{1}{4}$ | EN 10226 |
| | G $\frac{1}{2}$ | sealed at back and manometer (combi) with profile seal ring in FPM (-30 ... +135 °C) |
| | $\frac{1}{8}$ - 27 NPT | (≤ 60 bar) |
| | G $\frac{1}{8}$ | sealed at front (≤ 60 bar) |
| | G $\frac{1}{8}$ | sealed at back DIN 3852-E with profile seal ring in FPM (-30 ... +135 °C) (> 60 bar - without UL and ATEX certificate) |
| | M10x1 | sealed at back DIN 3852-E with Profile seal ring in FPM (-30 ... +135 °C) (≤ 60 bar) |
| M20x1.5 | sealed at front and manometer (combi) | |
| G $\frac{1}{4}$, G $\frac{1}{2}$ | sealed at front | |

Installation arrangement

Unrestricted

Tests / Admissions

| | |
|---------------------------------|---|
| Electromagnetic compatibility | CE conformity acc. EN 61326-2-3 |
| Enhanced EMC protection | EN 50121-3-2 |
| Shock acc. IEC 68-2-27 | 100 g, 11 ms half sine wave, all 6 directions, free fall from 1 m on concrete (6x) |
| Constant shock acc. IEC 68-2-29 | 40 g for 6 ms, 1000x all 3 directions |
| Vibration acc. IEC 68-2-6 | 20 g, 15 ... 2000 Hz, 15 ... 25 Hz with amplitude ± 15 mm, 1 Octave/min. all 3 directions, 50 constant load |
| UL | ANSI/UL 61010-1 acc. E325110 |
| Drinking water approval | NSF/ANSI 61/372 acc. MH60087 |
| EAC | |

Protection against explosion Ⓜ

| | ration. 10 ... 90% | 4 ... 20 mA |
|---|---------------------------------------|---------------------------------------|
| Intrinsic safety "i" | Ex II 1/2 G Ex ia IIC T4 Ga/Gb | Ex II 1/2 G Ex ia IIC T4 Ga/Gb |
| EC type examination certificate | Ex II 1/2 D Ex ia IIIC T125°C Da/Db | Ex II 1/2 D Ex ia IIIC T125°C Da/Db |
| Connection to certified intrinsically safe resistive circuits with maximum values | SEV 15 ATEX 0173 | SEV 10 ATEX 0145 |
| Effective internal inductance and capacitance for versions with plugs complying with EN 175301-803-A or M12x1 | Ui ≤ 15 VDC; li ≤ 200 mA; Pi ≤ 750 mW | Ui ≤ 30 VDC; li ≤ 100 mA; Pi ≤ 750 mW |
| IECEx | Li = 0 nH; Ci ≤ 150 nF | Li = 0 nH; Ci = 0 nF |
| | | SEV 16.0007 |

Weight

~ 90 g

Packaging (Please state on order)

| | |
|--|------------------------|
| Single packaging in cardboard | accessories integrated |
| Multiple packaging in cardboard (25 pcs) | |

Accuracy

| Parameter | | Unit | |
|---|------|----------|--------|
| Characteristic line ¹⁾ | | % fs | ± 0.3 |
| Resolution | | % fs | 0.1 |
| Thermal characteristic ²⁾ | max. | % fs/10K | ± 0.2 |
| Long term stability acc. IEC EN 60770-1 | max. | % fs | ± 0.25 |

Test conditions: 25 °C, 45% RH, power supply 24 VDC

Order code selection table in bar

| | | | 1 | 2 | 3 | 4 | 5 | 6 | 7 | 8 | 9 | 10 | 11 |
|-------------------------------------|---|---|----------------------------|---|---|-----|-----|---|---|-------|---|----|----|
| | | | 520. X X X X X X X X X X X | | | | | | | | | | |
| Pressure range ³⁾ | -1 ... 9 bar | | 9 | 0 | 6 | | | | | | | | |
| | 0 ... 2.5 bar | | 9 | 1 | 4 | | | | | | | | |
| | 0 ... 4 bar | | 9 | 1 | 5 | | | | | | | | |
| | 0 ... 6 bar | | 9 | 1 | 7 | | | | | | | | |
| | 0 ... 10 bar | | 9 | 3 | 0 | | | | | | | | |
| | 0 ... 16 bar | | 9 | 3 | 1 | | | | | | | | |
| | 0 ... 25 bar | | 9 | 3 | 2 | | | | | | | | |
| | 0 ... 40 bar | | 9 | 3 | 3 | | | | | | | | |
| | 0 ... 60 bar | | 9 | 4 | 0 | | | | | | | | |
| | 0 ... 100 bar | | 9 | 4 | 1 | | | | | | | | |
| | 0 ... 160 bar | | 9 | 4 | 2 | | | | | | | | |
| | 0 ... 250 bar | | 9 | 4 | 3 | | | | | | | | |
| | 0 ... 400 bar | | 9 | 5 | 4 | | | | | | | | |
| 0 ... 600 bar | | 9 | 5 | 5 | | | | | | | | | |
| 0 ... 1000 bar | | 9 | 5 | 7 | | | | | | | | | |
| Application | standard | | | | | | S | 0 | | | | | |
| | for oxygen applications | | | | | | S | 1 | | | 0 | | |
| | with drinking water approval NSF 61 | | | | | | S | 4 | | | 0 | 1 | |
| Output / power supply | 0 ... 5 V | 7 ... 33 VDC | | | | | | | 1 | | | | |
| | 1 ... 6 V | 8 ... 33 VDC | | | | | | | 6 | | | | |
| | | 12 ... 33 VDC | | | | | | | 2 | | | | |
| | 0 ... 10 V | 12 ... 33 VDC Enhanced EMC protection | | | | | | | C | 1,2,3 | | | |
| | | 12 ... 33 VDC / 24 VAC ±15% (not possible with M12x1, metri Pack, RAST, braids) | | | | | | | | 8 | | | |
| | ration. 10 ... 90% | 5VDC ±10% | | | | | | | 7 | | | | |
| | | 5VDC ±10% Ex protection | | | | | 0,4 | | 9 | 1,3 | | 1 | |
| Electrical connection | 4 ... 20 mA | 7 ... 33 VDC | | | | | | | 3 | | | | |
| | | 7 ... 33 VDC Enhanced EMC protection (not possible with Braids) | | | | | | | A | | | | |
| | | 10 ... 30 VDC Ex protection | | | | | 0,4 | | 4 | 1,3 | | 1 | |
| | | DIN EN 175301-803-A | | | | | | | | 1 | | | |
| Pressure connection ³⁾ | Connector ⁴⁾ | DIN EN 175301-803-C (industrial standard 9.4 mm) | | | | | | | | 2 | | | |
| | | M12x1 2w: IN=1 / OUT=3 3w: IN=1 / OUT=4 / GND=3 | | | | | | | | 3 | | | |
| | | M12x1 2w: IN=1 / OUT=4 3w: IN=1 / OUT=3 / GND=4 | | | | | | | | | M | | |
| | | M12x1 2w: IN=1 / OUT=2 3w: IN=1 / OUT=2 / GND=3 | | | | | | | | | P | | |
| | | RAST 2.5 | | | | | 0,4 | | 7 | 4 | | | |
| | | Metri Pack Serie 150 | | | | | 0,4 | | | 5 | | | |
| | Braids | 80 ±10 mm | | | | | 0,4 | | | 6 | | | |
| | | 290 ±10 mm | | | | | 0,4 | | | 7 | | | |
| | | 480 ±10 mm | | | | | 0,4 | | | 8 | | | |
| | Swift connector | 730 ±10 mm | | | | | 0,4 | | | 9 | | | |
| | | without cable | | | | | | | | 0 | | | |
| | | with cable 1.5 m | | | | | | | | L | | | |
| | | with cable 2.0 m | | | | | | | | N | | | |
| Pressure orifice | with cable 3.0 m | | | | | | | | Q | | | | |
| | with cable 5.0 m | | | | | | | | R | | | | |
| | Inside thread | 7/16-20 UNF sealing cone with schrader | | | | | 0,4 | | | 0 | 0 | N | |
| | | 7/16-20 UNF sealing cone | | | | | | | | K | | 1 | |
| | | 1/2-14 NPT ⁵⁾ | | | | | | | | D | | 1 | |
| | Outside thread | G 1/4 with O-Ring seal FPM | | | | | | | | | 1 | 1 | |
| | | 7/16-20 UNF sealing cone | | | | | | | | 2 | | 1 | |
| | | 1/4-18 NPT | | | | | | | | 3 | | 1 | |
| | | G 1/4 sealed at back DIN 3852-E with profile seal ring in FPM | | | | | | | | 4 | | 1 | |
| | | G 1/4 sealed at back and manometer with profile seal ring in FPM | | | | | | | | 5 | 0 | 1 | |
| | | R 1/4 acc. to EN 10226 | | | | | | | | 7 | | 1 | |
| | | G 1/2 sealed at back and manometer with profile seal ring in FPM | | | | | 0,1 | | | 8 | | 1 | |
| | | 7/16-20 UNF sealed at back SAE 4 with O-Ring seal FPM | | | | | | | | G | | 1 | |
| 1/8-27 NPT ⁵⁾ | | | | | | | | | A | | 1 | | |
| G 1/8 sealed at front ⁵⁾ | | | | | | | | | M | | 1 | | |
| Pressure range variation (optional) | G 1/2 sealed at back DIN 3852-E with Profile seal ring in FPM ⁶⁾ | | | | | 0,1 | | | | H | 1 | | |
| | M10x1 sealed at back DIN 3852-E with profile seal ring in FPM ⁵⁾ | | | | | 0,1 | | | | F | 1 | | |
| | M20x1.5 sealed at front and manometer (combi) | | | | | | | | | E | 1 | | |
| | G 1/4 sealed at front | | | | | | | | | J | 1 | | |
| | G 1/2 sealed at front | | | | | | | | | 9 | | 1 | |
| Material | without (inclusive pressure tip orifice from 100 bar on) | | | | | | | | | | 0 | | |
| | with | | | | | | | | | | 2 | | |
| pressure connection | Stainless steel 1.4305 / AISI 303 | | | | | | | | | | | N | |
| Pressure range variation (optional) | Stainless steel 1.4404 / AISI 316L | | | | | | | | | | | 1 | |
| | Indicate W and state range on order (e.g.: W0... + 3bar/OUT0...5V) | | | | | | | | | | | | W |

¹⁾ typ. ; max. 0.5% fs (incl. zero point, full scale, linearity, hysteresis and repeatability) ²⁾ -15 ... 85 °C ³⁾ Other pressure ranges or pressure connections on request ⁴⁾ Delivery without female connector ⁵⁾ (≤ 60 bar) ⁶⁾ Rupture pressure 1000 bar

| Order code selection table in psi | | 1 | 2 | 3 | 4 | 5 | 6 | 7 | 8 | 9 | 10 | 11 |
|---|--|---|---|---|---|-----|-----|-----|-------|-----|----|----|
| | | 520. | X | X | X | X | X | X | X | X | X | X |
| Pressure range ¹⁾ | -15 ... 130 psi | 9 | A | 6 | | | | | | | | |
| | 0 ... 30 psi | 9 | B | 4 | | | | | | | | |
| | 0 ... 60 psi | 9 | B | 5 | | | | | | | | |
| | 0 ... 100 psi | 9 | B | 7 | | | | | | | | |
| | 0 ... 200 psi | 9 | C | 1 | | | | | | | | |
| | 0 ... 300 psi | 9 | C | 2 | | | | | | | | |
| | 0 ... 500 psi | 9 | C | 3 | | | | | | | | |
| | 0 ... 750 psi | 9 | D | 0 | | | | | | | | |
| | 0 ... 1000 psi | 9 | D | 1 | | | | | | | | |
| | 0 ... 2000 psi | 9 | D | 2 | | | | | | | | |
| | 0 ... 3000 psi | 9 | D | 3 | | | | | | | | |
| | 0 ... 5000 psi | 9 | E | 4 | | | | | | | | |
| | 0 ... 7500 psi | 9 | E | 5 | | | | | | | | |
| 0 ... 14500 psi | 9 | E | 7 | | | | | | | | | |
| Application | standard | | | | S | 0 | | | | | | |
| | for oxygen applications | | | | S | 1 | | | | 0 | | |
| | with drinking water approval NSF 61 | | | | S | 4 | | | | 0 | 1 | |
| Output / power supply | 0 ... 5 V | | | | | | | 1 | | | | |
| | 1 ... 6 V | | | | | | | 6 | | | | |
| | | | | | | | | 2 | | | | |
| | 0 ... 10 V | | | | | | | C | 1,2,3 | | | |
| | | | | | | | | 8 | | | | |
| | ration. 10 ... 90% | | | | | | | 7 | | | | |
| | | | | | | | | 0,4 | 9 | 1,3 | | 1 |
| | | | | | | | | | 3 | | | |
| | 4 ... 20 mA | | | | | | | | A | | | |
| | | | | | | | | 0,4 | 4 | 1,3 | | 1 |
| Electrical connection | Connector ²⁾ | DIN EN 175301-803-A | | | | | | | | 1 | | |
| | | DIN EN 175301-803-C (industrial standard 9.4 mm) | | | | | | | | 2 | | |
| | | M12x1 2w: IN=1 / OUT=3 3w: IN=1 / OUT=4 / GND=3 | | | | | | | | 3 | | |
| | | M12x1 2w: IN=1 / OUT=4 3w: IN=1 / OUT=3 / GND=4 | | | | | | | | M | | |
| | | M12x1 2w: IN=1 / OUT=2 3w: IN=1 / OUT=2 / GND=3 | | | | | | | | P | | |
| | | RAST 2.5 | | | | | | 0,4 | 7 | 4 | | |
| | Braids | Metri Pack Serie 150 ³⁾ | | | | | | 0,4 | 5 | | | |
| | | 80 ±10 mm | | | | | | 0,4 | 6 | | | |
| | | 290 ±10 mm | | | | | | 0,4 | 7 | | | |
| | | 480 ±10 mm | | | | | | 0,4 | 8 | | | |
| | Swift connector | 730 ±10 mm | | | | | | 0,4 | 9 | | | |
| | | without cable | | | | | | | 0 | | | |
| | | with cable 1.5 m | | | | | | | L | | | |
| with cable 2.0 m | | | | | | | | N | | | | |
| Pressure connection ¹⁾ | Inside thread | with cable 3.0 m | | | | | | Q | | | | |
| | | with cable 5.0 m | | | | | | R | | | | |
| | | 7/16-20 UNF sealing cone with schrader | | | | | 0,4 | | | 0 | 0 | N |
| | | 7/16-20 UNF sealing cone | | | | | | | | K | | 1 |
| | Outside thread | 1/2-14 NPT ³⁾ | | | | | | | | D | | 1 |
| | | G 1/4 with O-Ring seal FPM | | | | | | | | 1 | | 1 |
| | | 7/16-20 UNF sealing cone | | | | | | | | 2 | | 1 |
| | | 1/4-18 NPT | | | | | | | | 3 | | 1 |
| | | G 1/4 sealed at back DIN 3852-E with profile seal ring in FPM | | | | | | | | 4 | | 1 |
| | | G 1/4 sealed at back and manometer with profile seal ring in FPM | | | | | | | | 5 | 0 | 1 |
| | | R 1/4 acc. to EN 10226 | | | | | | | | 7 | | 1 |
| | | G 1/2 sealed at back and manometer with profile seal ring in FPM | | | | | | 0,1 | | 8 | | 1 |
| | | 7/16-20 UNF sealed at back SAE 4 with O-Ring seal FPM | | | | | | | | G | | 1 |
| | | 1/8-27 NPT ³⁾ | | | | | | | | A | | 1 |
| | | G 1/8 sealed at front ³⁾ | | | | | | | | M | | 1 |
| | | G 1/8 sealed at back DIN 3852-E with Profile seal ring in FPM ⁴⁾ | | | | | | 0,1 | | H | | 1 |
| M10x1 sealed at back DIN 3852-E with profile seal ring in FPM ³⁾ | | | | | | 0,1 | | F | | 1 | | |
| M20x1.5 sealed at front and manometer (combi) | | | | | | | | E | | 1 | | |
| G 1/4 sealed at front | | | | | | | | J | | 1 | | |
| G 1/2 sealed at front | | | | | | | | 9 | | 1 | | |
| Pressure orifice | without (inclusive pressure tip orifice from 2000 psi on) | | | | | | | | | 0 | | |
| | with | | | | | | | | | 2 | | |
| Material | Stainless steel 1.4305 / AISI 303 | | | | | | | | | | N | |
| pressure connection | Stainless steel 1.4404 / AISI 316L | | | | | | | | | | 1 | |
| Pressure range variation (optional) | Indicate W and state range on order (e.g.: W0... + 400psi/OUT0...5V) | | | | | | | | | | | W |

¹⁾ Other pressure ranges or pressure connections on request

²⁾ Delivery without female connector

³⁾ (≤ 870 psi)

⁴⁾ Rupture pressure 14500 psi

| Order code selection table in MPa | | 1 | 2 | 3 | 4 | 5 | 6 | 7 | 8 | 9 | 10 | 11 | | |
|-------------------------------------|---|--|---|---|---|---|-----|-----|---|---|-------|----|---|---|
| | | 520. | X | X | X | X | X | X | X | X | X | X | | |
| Pressure range ¹⁾ | -0.1 ... 0.9 MPa | 9 | F | 6 | | | | | | | | | | |
| | 0 ... 0.25 MPa | 9 | G | 4 | | | | | | | | | | |
| | 0 ... 0.4 MPa | 9 | G | 5 | | | | | | | | | | |
| | 0 ... 0.6 MPa | 9 | G | 7 | | | | | | | | | | |
| | 0 ... 1 MPa | 9 | H | 0 | | | | | | | | | | |
| | 0 ... 1.6 MPa | 9 | H | 1 | | | | | | | | | | |
| | 0 ... 2.5 MPa | 9 | H | 2 | | | | | | | | | | |
| | 0 ... 4 MPa | 9 | H | 3 | | | | | | | | | | |
| | 0 ... 6 MPa | 9 | K | 0 | | | | | | | | | | |
| | 0 ... 10 MPa | 9 | K | 1 | | | | | | | | | | |
| | 0 ... 16 MPa | 9 | K | 2 | | | | | | | | | | |
| | 0 ... 25 MPa | 9 | K | 3 | | | | | | | | | | |
| | 0 ... 40 MPa | 9 | L | 4 | | | | | | | | | | |
| 0 ... 60 MPa | 9 | L | 5 | | | | | | | | | | | |
| 0 ... 100 MPa | 9 | L | 7 | | | | | | | | | | | |
| Application | standard | | | | | S | 0 | | | | | | | |
| | for oxygen applications | | | | | S | 1 | | | | 0 | | | |
| | with drinking water approval NSF 61 | | | | | S | 4 | | | | 0 | 1 | | |
| Output / power supply | 0 ... 5 V | | | | | | | | | 1 | | | | |
| | 7 ... 33 VDC | | | | | | | | | 6 | | | | |
| | 1 ... 6 V | | | | | | | | | 2 | | | | |
| | 8 ... 33 VDC | | | | | | | | | C | 1,2,3 | | | |
| | 0 ... 10 V | | | | | | | | | 8 | | | | |
| | 12 ... 33 VDC Enhanced EMC protection | | | | | | | | | 7 | | | | |
| | 12 ... 33 VDC / 24 VAC ±15% (not possible with M12x1, metri Pack, RAST, braids) | | | | | | | | | 9 | 1,3 | 1 | | |
| ratiom. 10 ... 90% | 5VDC ±10% | | | | | | 0,4 | | | | | | | |
| | 5VDC ±10% Ex protection | | | | | | | | | | | | | |
| 4 ... 20 mA | 7 ... 33 VDC | | | | | | | | | 3 | | | | |
| | 7 ... 33 VDC Enhanced EMC protection (not possible with Braids) | | | | | | | | | A | | | | |
| | 10 ... 30 VDC Ex protection | | | | | | 0,4 | | | 4 | 1,3 | 1 | | |
| Electrical connection | Connector ²⁾ | DIN EN 175301-803-A | | | | | | | | | 1 | | | |
| | | DIN EN 175301-803-C (industrial standard 9.4 mm) | | | | | | | | | | 2 | | |
| | | M12x1 2w: IN=1 / OUT=3 3w: IN=1 / OUT=4 / GND=3 | | | | | | | | | | | 3 | |
| | | M12x1 2w: IN=1 / OUT=4 3w: IN=1 / OUT=3 / GND=4 | | | | | | | | | | | M | |
| | | M12x1 2w: IN=1 / OUT=2 3w: IN=1 / OUT=2 / GND=3 | | | | | | | | | | | P | |
| | | RAST 2.5 | | | | | | 0,4 | 7 | | | 4 | | |
| | Braids | Metri Pack Serie 150 ³⁾ | | | | | | 0,4 | | | | 5 | | |
| | | 80 ±10 mm | | | | | | 0,4 | | | | 6 | | |
| | | 290 ±10 mm | | | | | | 0,4 | | | | 7 | | |
| | | 480 ±10 mm | | | | | | 0,4 | | | | 8 | | |
| | Swift connector | 730 ±10 mm | | | | | | 0,4 | | | | 9 | | |
| | | without cable | | | | | | | | | | 0 | | |
| | | with cable 1.5 m | | | | | | | | | | L | | |
| with cable 2.0 m | | | | | | | | | | | N | | | |
| Pressure connection ¹⁾ | Inside thread | with cable 3.0 m | | | | | | | | | Q | | | |
| | | with cable 5.0 m | | | | | | | | | R | | | |
| | | $\frac{7}{16}$ -20 UNF sealing cone with schrader | | | | | | 0,4 | | | | 0 | 0 | N |
| | | $\frac{7}{16}$ -20 UNF sealing cone | | | | | | | | | | K | | 1 |
| | Outside thread | $\frac{1}{2}$ -14 NPT ³⁾ | | | | | | | | | | D | | 1 |
| | | G $\frac{1}{4}$ with O-Ring seal FPM | | | | | | | | | | 1 | | 1 |
| | | $\frac{7}{16}$ -20 UNF sealing cone | | | | | | | | | | 2 | | 1 |
| | | $\frac{1}{4}$ -18 NPT | | | | | | | | | | 3 | | 1 |
| | | G $\frac{1}{4}$ sealed at back DIN 3852-E with profile seal ring in FPM | | | | | | | | | | 4 | | 1 |
| | | G $\frac{1}{4}$ sealed at back and manometer with profile seal ring in FPM | | | | | | | | | | 5 | 0 | 1 |
| | | R $\frac{1}{4}$ acc. to EN 10226 | | | | | | | | | | 7 | | 1 |
| | | G $\frac{1}{2}$ sealed at back and manometer with profile seal ring in FPM | | | | | | 0,1 | | | | 8 | | 1 |
| | | $\frac{7}{16}$ -20 UNF sealed at back SAE 4 with O-Ring seal FPM | | | | | | | | | | G | | 1 |
| Pressure orifice | $\frac{1}{8}$ -27 NPT ³⁾ | | | | | | | | | | A | | 1 | |
| | G $\frac{1}{8}$ sealed at front ³⁾ | | | | | | | | | | M | | 1 | |
| | G $\frac{1}{8}$ sealed at back DIN 3852-E with Profile seal ring in FPM ⁴⁾ | | | | | | 0,1 | | | | H | | 1 | |
| | M10x1 sealed at back DIN 3852-E with profile seal ring in FPM ³⁾ | | | | | | 0,1 | | | | F | | 1 | |
| | M20x1.5 sealed at front and manometer (combi) | | | | | | | | | | E | | 1 | |
| | G $\frac{1}{4}$ sealed at front | | | | | | | | | | J | | 1 | |
| | G $\frac{1}{2}$ sealed at front | | | | | | | | | | 9 | | 1 | |
| Material pressure connection | without (inclusive pressure tip orifice from 10 MPa on) | | | | | | | | | | | 0 | | |
| | with | | | | | | | | | | | 2 | | |
| Pressure range variation (optional) | Stainless steel 1.4305 / AISI 303 | | | | | | | | | | | | N | |
| | Stainless steel 1.4404 / AISI 316L | | | | | | | | | | | | 1 | |
| | Indicate W and state range on order (e.g.: W0... + 0.3MPa/OUT0...5V) | | | | | | | | | | | | W | |

¹⁾ Other pressure ranges or pressure connections on request

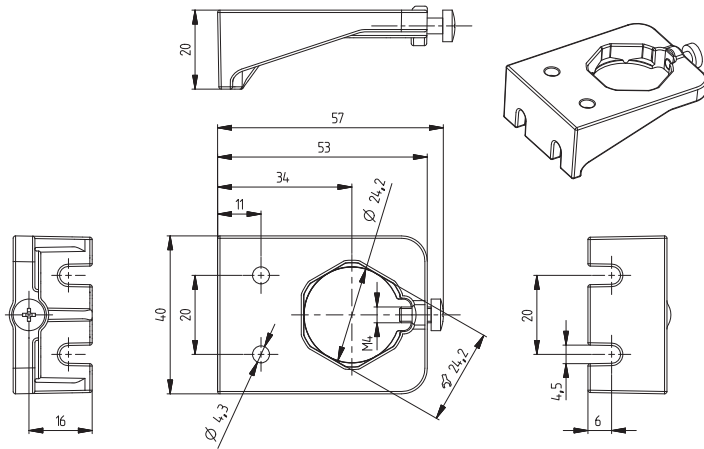
²⁾ Delivery without female connector

³⁾ (≤ 870 psi)

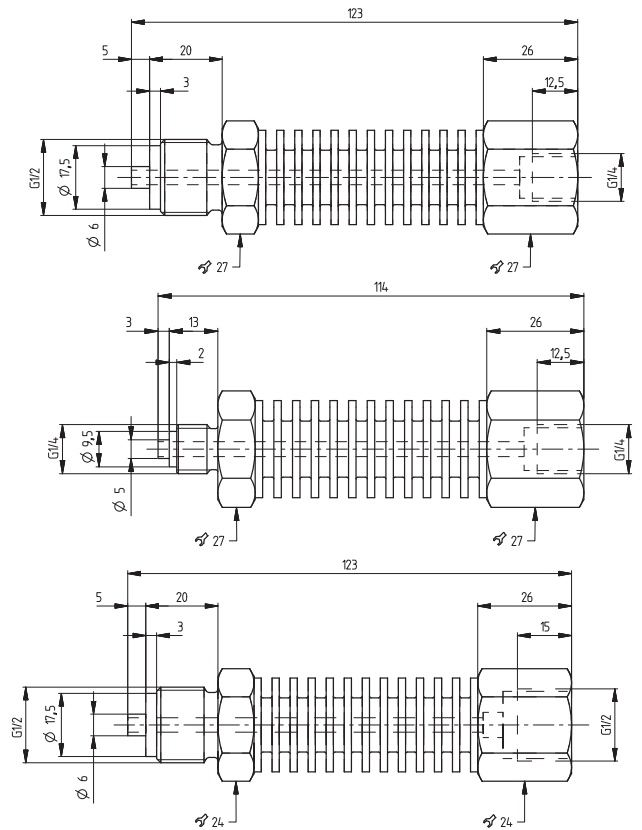
⁴⁾ Rupture pressure 14500 psi

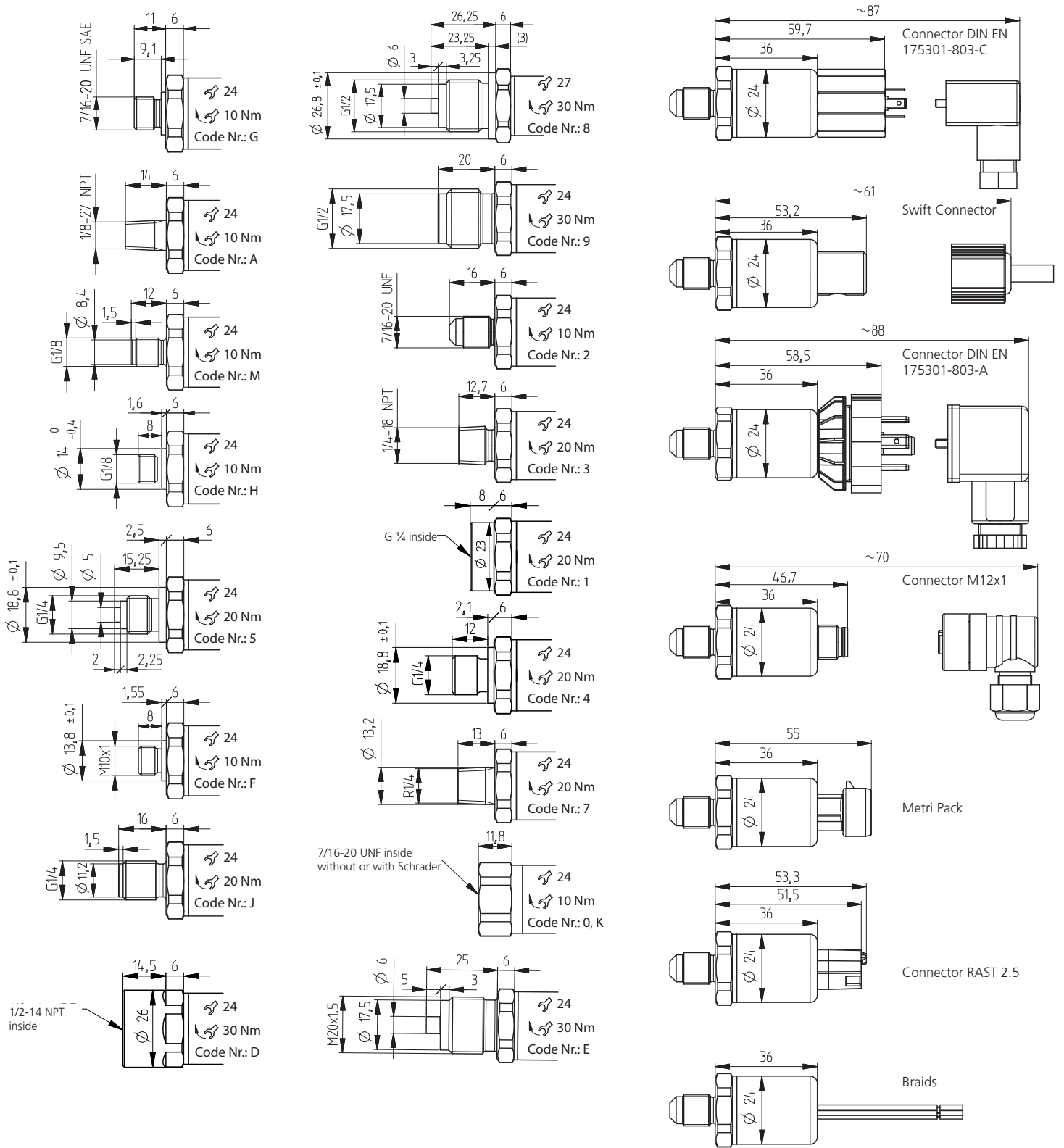
| | |
|---|--------|
| Swift connector | 117312 |
| Female connector DIN EN 175301-803-A with seal | 103510 |
| Female connector DIN EN 175301-803-C with seal | 104244 |
| Corner-wire box for connector M12x1 | 106975 |
| Corner-wire box for connector M12x1 with cable 2.0 m | 114604 |
| Straight-wire box for connector M12x1 | 114570 |
| Straight-wire box for connector M12x1 with cable 2.0 m | 114605 |
| Mounting bracket with screw | 118716 |
| Heat sink with outside thread G ½ sealed at front - inside thread G ½ | 105631 |
| Heat sink with outside thread G ½ sealed at front - inside thread G ¼ | 105073 |
| Heat sink with outside thread G ¼ sealed at front - inside thread G ¼ | 105074 |
| Calibration certificate (≤ 600 bar) | 104551 |

Mounting bracket



Heat sink

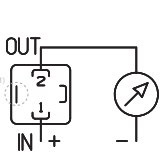




Electrical connections

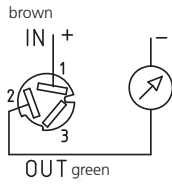
2 wire

Connector DIN
EN 175301-803-A or C



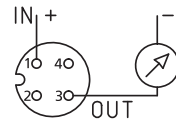
1 (IN) 2 (OUT)

Swift connector



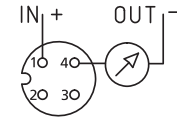
1 (IN) 2 (OUT)

Connector M12x1



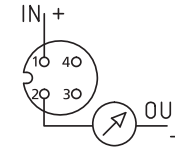
1 (IN) 3 (OUT)

Connector M12x1



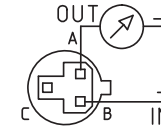
1 (IN) 4 (OUT)

Connector M12x1



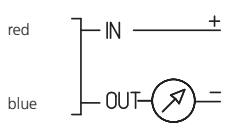
1 (IN) 2 (OUT)

Metri Pack Serie 150



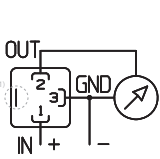
B (IN) A (OUT)

Braids



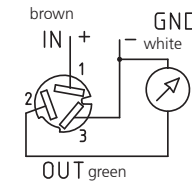
3 wire

Connector DIN
EN 175301-803-A or C



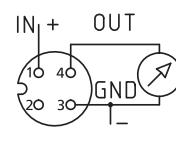
1 (IN) 2 (OUT) 3 (GND)

Swift connector



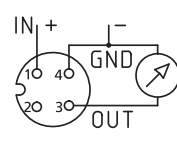
1 (IN) 2 (OUT) 3 (GND)

Connector M12x1



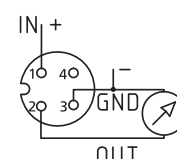
1 (IN) 4 (OUT) 3 (GND)

Connector M12x1



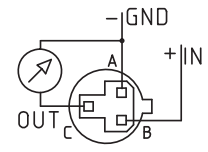
1 (IN) 3 (OUT) 4 (GND)

Connector M12x1



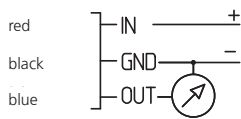
1 (IN) 2 (OUT) 3 (GND)

Metri Pack Serie 150

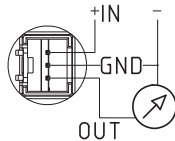


B (IN) C (OUT) A (GND)

Braids

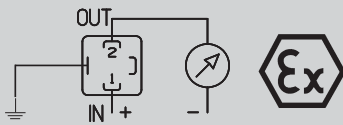


Connector RAST 2.5



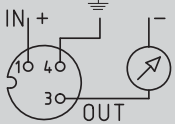
Device design with explosion protection: 4 ... 20 mA
The grounding connection is conductively connected to the transmitter housing.

Connector DIN
EN 175301-803-A



1 (IN) 2 (OUT) 3 (GND)

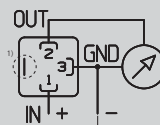
Connector M12x1



1 (IN) 3 (OUT) 4 (GND)

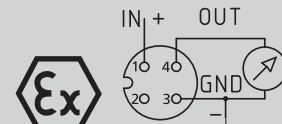
Device design with explosion protection: ratiom. 10 ... 90%
The electronic GND is connected with a 1MΩ resistor to the transmitter housing.

Connector DIN
EN 175301-803-A



1 (IN) 2 (OUT) 3 (GND)

Connector M12x1



1 (IN) 3 (GND) 4 (OUT)

¹⁾ Not connected with transmitter housing

Huba Control AG

Headquarters

Industriestrasse 17
5436 Würenlos
Telefon +41 (0) 56 436 82 00
Telefax +41 (0) 56 436 82 82
info.ch@hubacontrol.com

Huba Control AG

Niederlassung Deutschland

Schlattgrabenstrasse 24
72141 Walddorfhäslach
Telefon +49 (0) 7127 23 93 00
Telefax +49 (0) 7127 23 93 20
info.de@hubacontrol.com

Huba Control SA

Succursale France

Rue Lavoisier
Technopôle Forbach-Sud
57602 Forbach Cedex
Téléphone +33 (0) 387 847 300
Télécopieur +33 (0) 387 847 301
info.fr@hubacontrol.com

Huba Control AG

Vestiging Nederland

Hamseweg 20A
3828 AD Hoogland
Telefoon +31 (0) 33 433 03 66
Telefax +31 (0) 33 433 03 77
info.nl@hubacontrol.com

Huba Control AG

Branch Office United Kingdom

Unit 13 Berkshire House
County Park Business Centre
Shrivenham Road
Swindon Wiltshire SN1 2NR
Phone +44 (0) 1993 776667
Fax +44 (0) 1993 776671
info.uk@hubacontrol.com