



Indu-Sol GmbH
Blumenstrasse 3
04626 Schmoelln

Telephone:
+49 (0) 34491 5818-0
Telefax:
+49 (0) 34491 5818-99

Email:
info@indu-sol.com
Homepage:
www.indu-sol.com

BUS problems or EMC problems?

With an increasing automation level of industrial productions the power density rises and thus the risk of disturbances by electromagnetic interferences. In this context interference currents occur along fieldbus cables, encoder lines, the routings of power supply and equipotential bonding systems.

EMC-INspektor® V2 is a special measuring und analysing tool to record temporarily or permanently electromagnetic interferences. It allows connecting up to four current transformers, whose measured values were recorded, evaluated and compared separately. Depending on the line type different quality parameters can be configured. Thereby it provides a specific evaluation and monitoring of each measuring channel in the interest of Condition Monitoring.

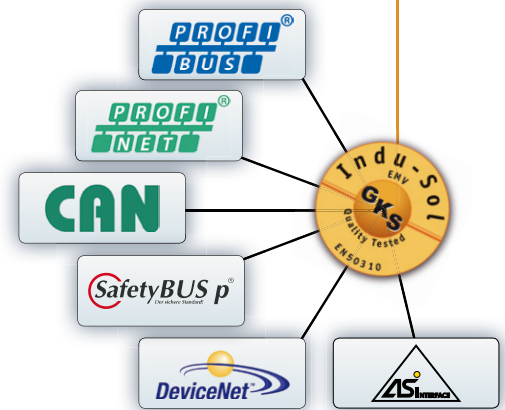
The sector of industrial automation obtains a smart tool for comprehensive fieldbus analyses by the EMC-INspektor® V2.

System properties

- Parallel inspections of multiple potentially disturbed sections
- Permanent analysis and monitoring (Condition Monitoring)
- Data comparison of each input source
- Specific status evaluation and alerting
- Visual display of interferences via web interface
- Export of measurements on USB stick or via LAN interface
- Configuration of device software via web interface

Measuring rudiments

- EMC interferences along the BUS cables
- EMC interferences via the V 24 VDC power supply
- EMC interferences via the 230/400 VAC low-voltage distribution system
- EMC interferences in the equipotential bonding system
- EMC interferences via the transmitter lines



Our range of services - Your benefit!

By smart long-term monitoring we tap your system for EMC. Our system solution is capable of detecting and localizing conducted interferences. A detailed protocol makes it easy for you to understand the results and indicates specific measures to reduce interferences.

Ordering details	Art. No.
EMC-INspektor® V2	122010001
EMC-INspektor® measuring and diagnostic clamp	122010002
EMC measurement	210060000

EMV measuring and diagnostic tool EMC-INSpektor® V2



Indu-Sol GmbH – Specialist in Fieldbus Technology



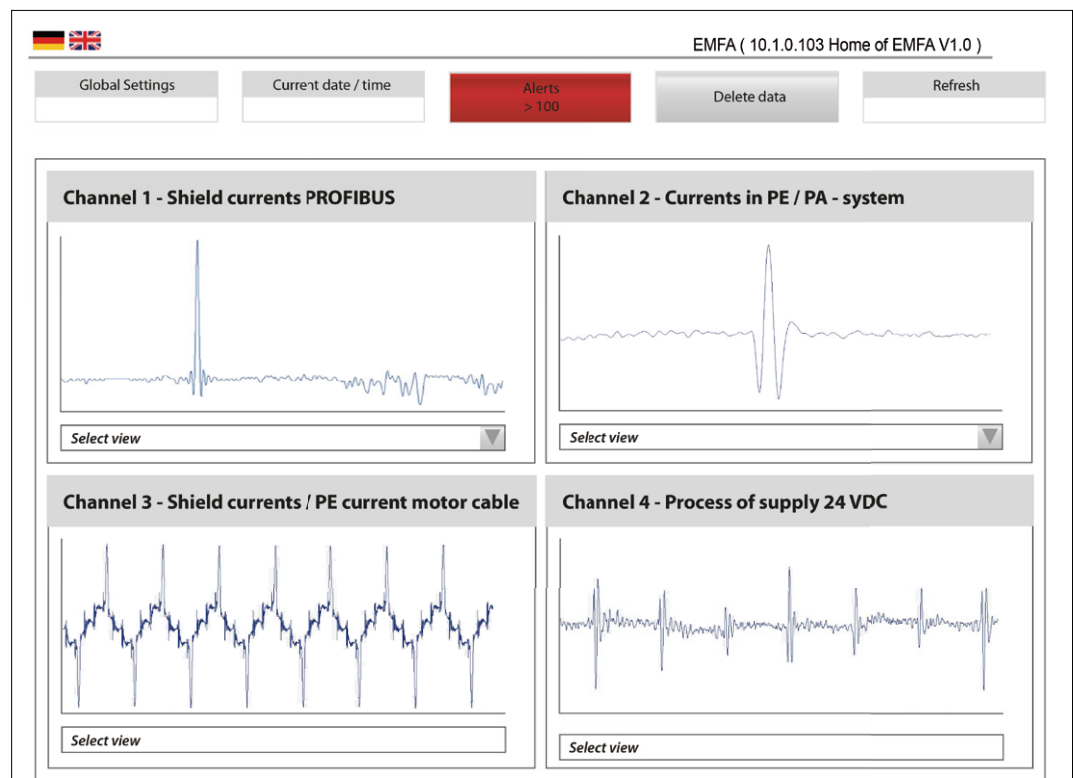
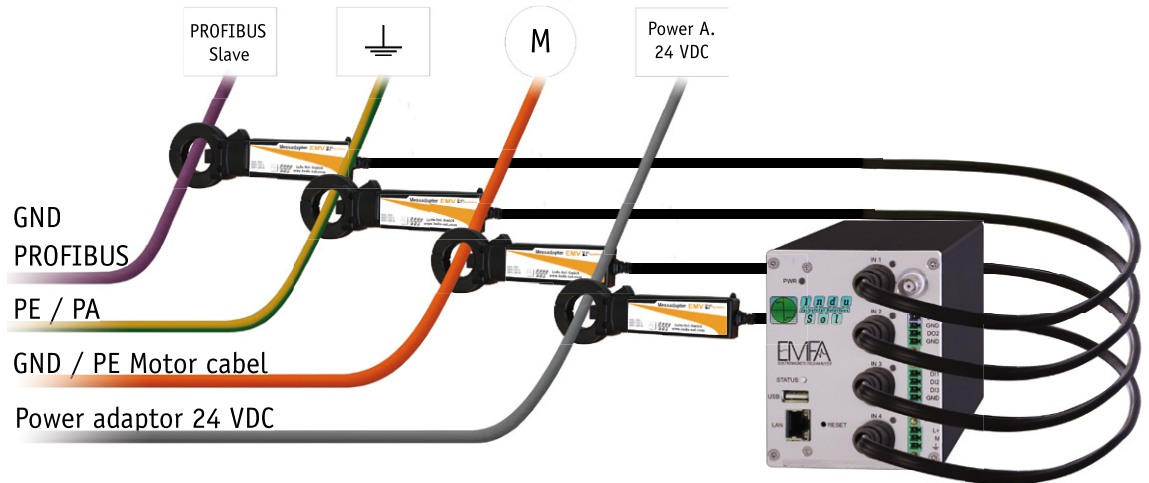
Indu-Sol GmbH
Blumenstrasse 3
04626 Schmoelln

Telephone:
+49 (0) 34491 5818-0
Telefax:
+49 (0) 34491 5818-99

Email:
info@indu-sol.com
Homepage:
www.indu-sol.com

EMC analysis in the field bus network environment

The EMC-INSpektor® V2 provides an automated, contact- and interruption-free long-term inspection. Up to four channels can be connected, measured and analyzed.



Illustrated example of the web based user interface, Menu: Channel Comparison