

HYDRAULIC AXIAL PISTON MOTOR

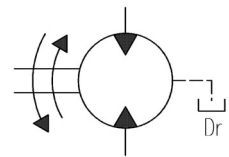


Characteristics

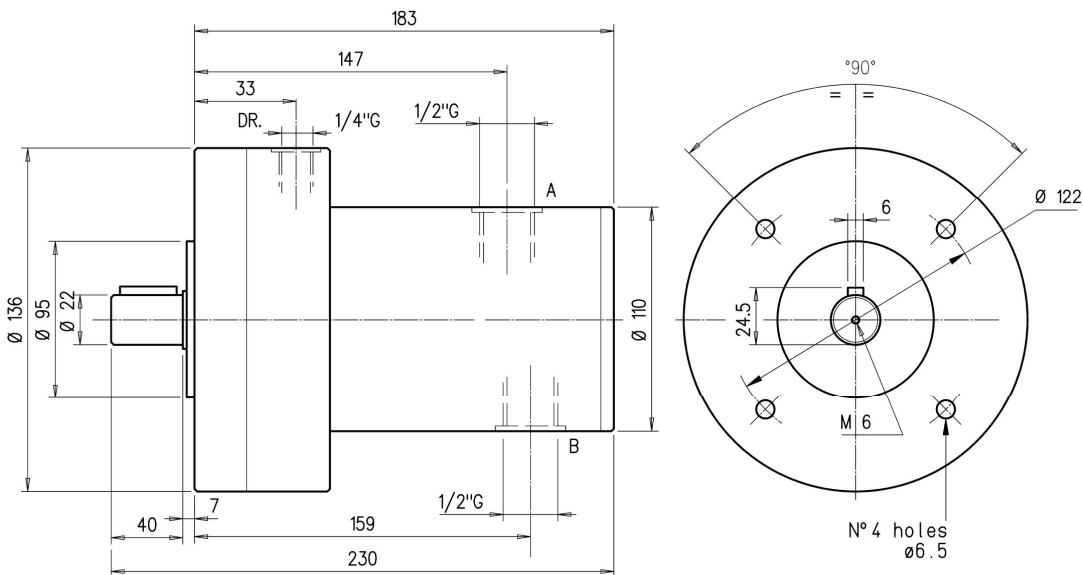
TYPE	Displacement	Max. pressure	Max. speed	Max. torque	Max. power	Weight
IMP- 1/30	30 cm ³ /rev.	150 bar	1600 rpm	64 Nm	10.6 Kw	12.5 Kg
IMP- 1/40	40 cm ³ / rev.	150 bar	1300 rpm	86 Nm	11.4 Kw	
IMP- 1/50	50 cm ³ / rev.	125 bar	1000 rpm	89 Nm	9.2 Kw	
IMP- 1/63	63 cm ³ / rev.	125 bar	800 rpm	112 Nm	9.3 Kw	
IMP- 1/70	70 cm ³ / rev.	100 bar	750 rpm	100 Nm	7.7 Kw	

Description Quick hydraulic axial piston motors – reversible and fixed displacement with rotating distribution.

Symbol



Dimensions



Installation rules

- It can be mounted in any direction
- It doesn't stand axial and radial loads on the shaft
- Fluid to be used: hydraulic oil in compliance with DIN 51524 and viscosity between 30 and 100 mm²/s (cSt) at 40°C
- Recommended filtration: 25μ
- Oil temperature: from -20° to +75°C
- Rotation (from shaft side):
 Clockwise by feeding "A" port
 Counter clockwise by feeding "B" port

Ordering code

IMP - 1 / * * / * *

E = Encoder prearrangement DT = speedometer dynamo prearrangement

Displacement: 30 = 30 c³/rev 40 = 40 c³/rev

50 = 50 c³/rev 63 = 63 c³/rev 70 = 70 c³/rev

Hydraulic axial piston motor