



## Product Announcement

### //// Orkan

## High-pressure air & gas boosters

//// Orkan series compressors are based on a flexible modular system and cover a wide output range. Starting from high-pressure compressors with final pressures up to 500 barg, the modular system offers gas boosters with inlet pressures up to 16 barg as well as hermetically gas-tight designs with magnetic coupling drive for gases such as helium, natural gas and hydrogen.

#### Key data

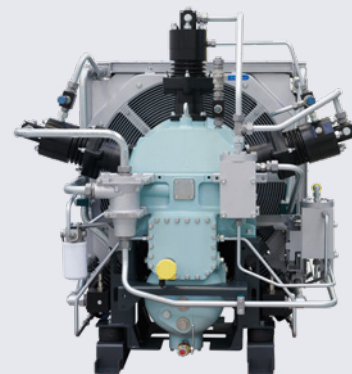
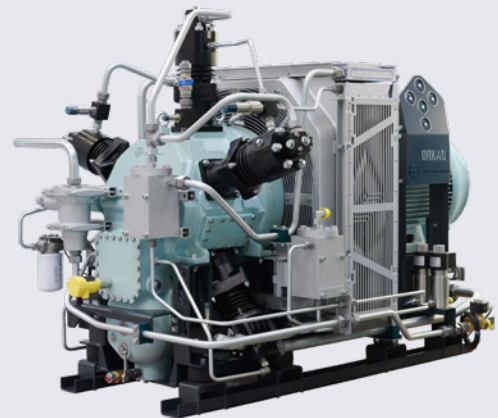
Inlet Pressure:	max. 16 barg
Final Pressure:	max. 500 barg
Volume Flow Rate:	max. 725 m <sup>3</sup> /h
Rated Power:	max. 110 kW

#### Magnetic coupling drive

Orkan gas boosters feature the first magnetic coupling drive Sauer uses for hermetically gas-tight compressors. It not only guarantees absolute gas-tightness but also is extremely low-maintenance and operates with maximum reliability.

#### CubeCooler

The new CubeCooler enables recooling temperatures that are more than 30 % lower than those of conventional cooler configurations. For a high cooling capacity like this the coolers have been arranged radially around the combined fan and flywheel.



**Dependable up to 500 bar – anywhere, anytime, anygas.**

J.P. Sauer & Sohn Maschinenbau GmbH

TELEFON +49 431 3940-0

E-MAIL [info@sauercompressors.de](mailto:info@sauercompressors.de)

FAX +49 431 3940-24

WEB [www.sauercompressors.com](http://www.sauercompressors.com)