



Technical Data

# //// Tornado WP 3325 B 3 – 5 BasBooster<sup>R</sup> incl. N<sub>2</sub>-Pack

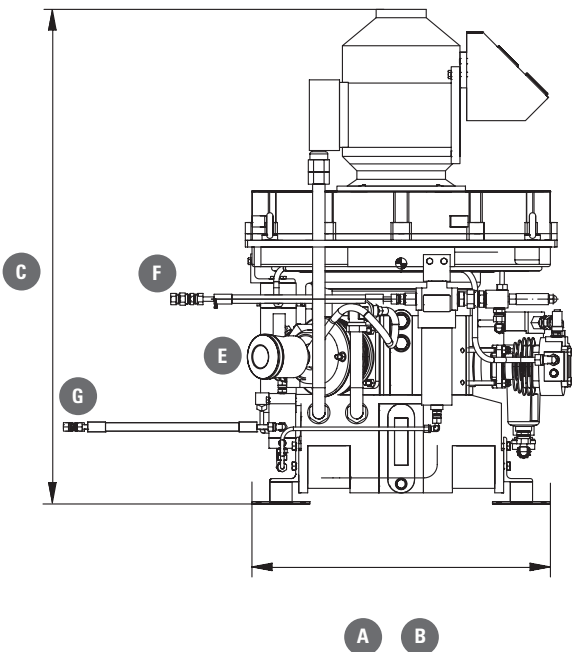
3-stage, air-cooled, direct drive

Media: Air & Nitrogen

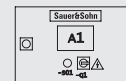
- Direct suction intake between 3–5 bar (g)
- Crankcase ventilation back to 1st stage
- Simultaneous supervision of feed pressure, suction pressure and discharge pressure for safe operation
- Total compression divided into 3 separate stages – improved cylinder cooling, lower oil usage
- Reduced maintenance – 2,500 hours service intervals
- Complete compressor check at final pressure including 3.1 inspection certificate
- Long operating life with guaranteed availability (minimum 25 years) of replacement parts ex stock
- Trouble-free operation, even under the most extreme conditions (55°C ambient temperature)



- Sauer offers the very latest compressors, control systems, compressed-air treatment systems and accessories
- Optimum customer services – starting with the initial enquiry and extending over the entire life of the product
- Customized solutions produced in accordance with customers' specifications
- Customer-specific documentation and calculation
- Individual, customer-oriented service plans



N<sub>2</sub>-Pack



TORNADO	Dimensions (mm)			Gas Inlet Connection	Gas Outlet Connection	Drainage Connection	Weight (kg)
	A	B	C	E	F	G	
WP 3325 B 3–5 BasBooster <sup>R</sup>	730	760	1,100	28 x 2.5 bite-type	10 x 2.5 bite-type	15 x 1.5 bite-type 8 x 1.5 bite-type	290

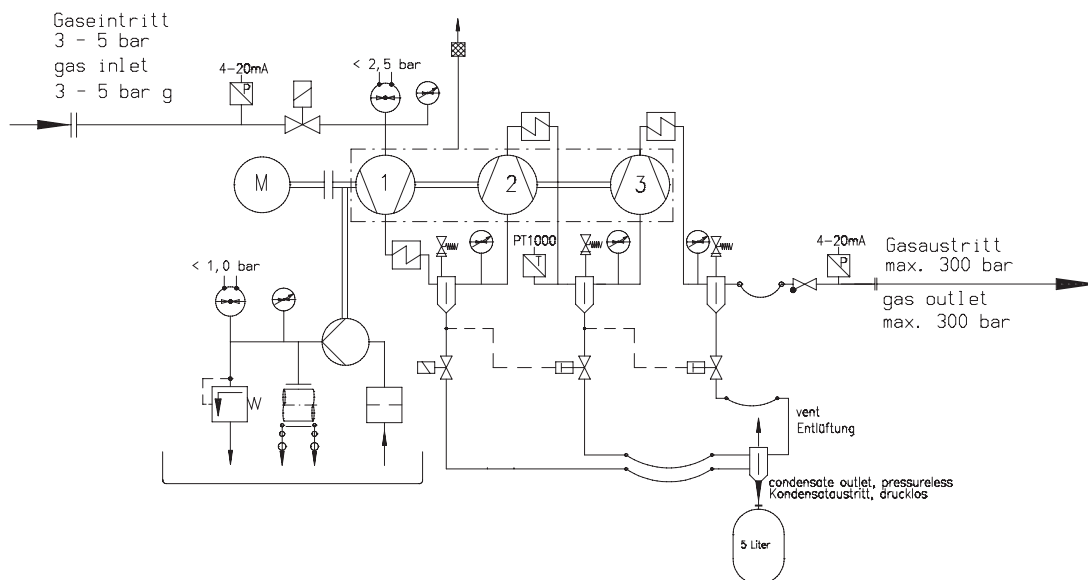
**PERFORMANCE DATA**

MODEL	Speed [rpm]	150 bar (g) [m³/h]	200 bar (g) [m³/h]	250 bar (g) [m³/h]	300 bar (g) [m³/h]	350 bar (g) [m³/h]	Rated Power [kW]	Sound Pressure dB(A)@1m
<b>WP 3325 B 3-5 BasBooster<sup>®</sup></b>	1,500	22.2	21.8	21.4	21.0	20.6	7.5	79
	1,800	26.2	25.8	25.4	25.0	24.6	8.7	81

[m³/h] acc. to ISO 1217 ref 1,013 bar.a and 20 °C; [dB(A)] acc. to DIN 45635; Suction Pressure: 5 bar (g)

**STANDARD ACCESSORIES**

	WP 3325 B 3-5 BasBooster <sup>®</sup>
Gas intake connection	✓
Gas pressure gauge @ each stage	✓
Oil/water (condensate) separator @ 2nd and 3rd stage	✓
Safety valve @ each stage	✓
Auto-Unload/drain system (E-motor drive only)	✓
Oil pressure 'low' alarm/trip & gauge	✓
Gas temperature 'high' alarm/trip	✓
Auto Stop/Start pressure sensor (mounted)	✓
Electric Motor IE 3 (IP55 protection + Class F 'B' temp. rise)	✓
Power supply 380-415V/50 Hz/3ph or 440-480V/60 Hz/3ph	✓
Resilient AV mounts	✓
Color Munsell 7.5 BG 7/2 - Sauer light green-blue	✓
First Oil Fill	✓
<b>N<sub>2</sub>-Pack</b>	
Sauer Electronic Compressor Control "ECC"	✓
Shut-off solenoid Valve (mounted)	✓



**Dependable up to 500 bar – anywhere, anytime.**

**J.P. Sauer & Sohn Maschinenbau GmbH**

PHONE + 49 431 3940-0  
FAX + 49 431 3940-24

E-MAIL info@sauercompressors.de  
WEB www.sauercompressors.com

