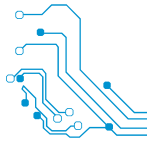




Katron Technologies, Inc.

COMPANY PROFILE



KTI Milestones

1983 » *Katron Technologies Inc. was established in Taipei.*

1987 » *Introduced LAN hardware with the “Katron” brand name.*

1990 » *KTI branch office was set up in Houston, TX, US.*

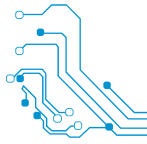
1991 » *OEM supplying on computer electronics product to Philips/Taiwan.*

1994 » *New CIS system: “KTI Networks” introduced.*



KTI Milestones

- 1995** *Moved Headquarter to Hsi-Chih, Taipei.*
» *Delivered 100VG Any LAN products*
 (NIC, Copper/Fiber Hub).
-
- 1996** *KTI launched fiber optical backbone +*
» *Ethernet for Military / Schools / Hospitals*
 / Big Corporate.
-
- 1997** *First KTI Fast Ethernet Switch products*
» *(Copper + Fiber) Introduced.*
-
- 2001** *Gigabit Ethernet Switches, Media Converters.*
»
-
- 2003 - 2019** *Industrial Ethernet Products.*
»



KTI ISO 9000 Certification

1998 » *ISO 9002:1994 certified*

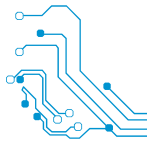
1999 » *ISO 9001:1994 certified*

2003 » *ISO 9001:2000 certified*

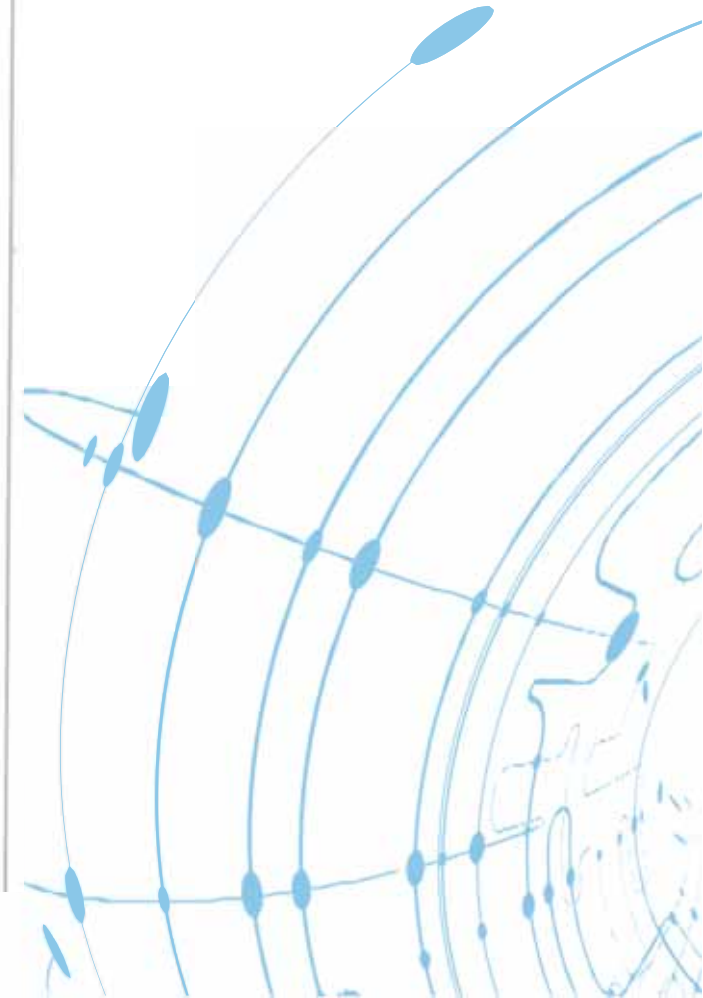
2009 » *ISO 9001:2008 certified*

2018 » *ISO 9001:2015 certified*



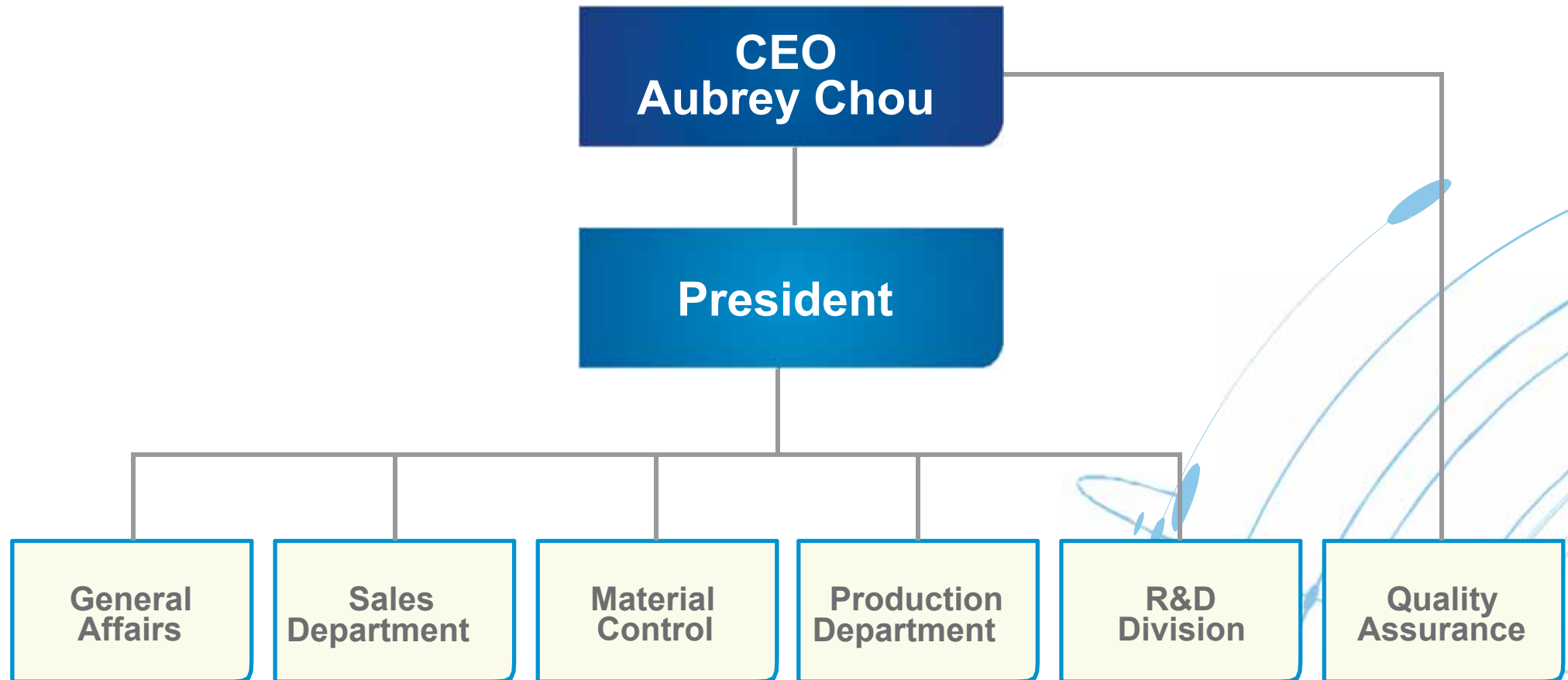


2018 >> ISO 9001:2015 Certification



Organization Chart

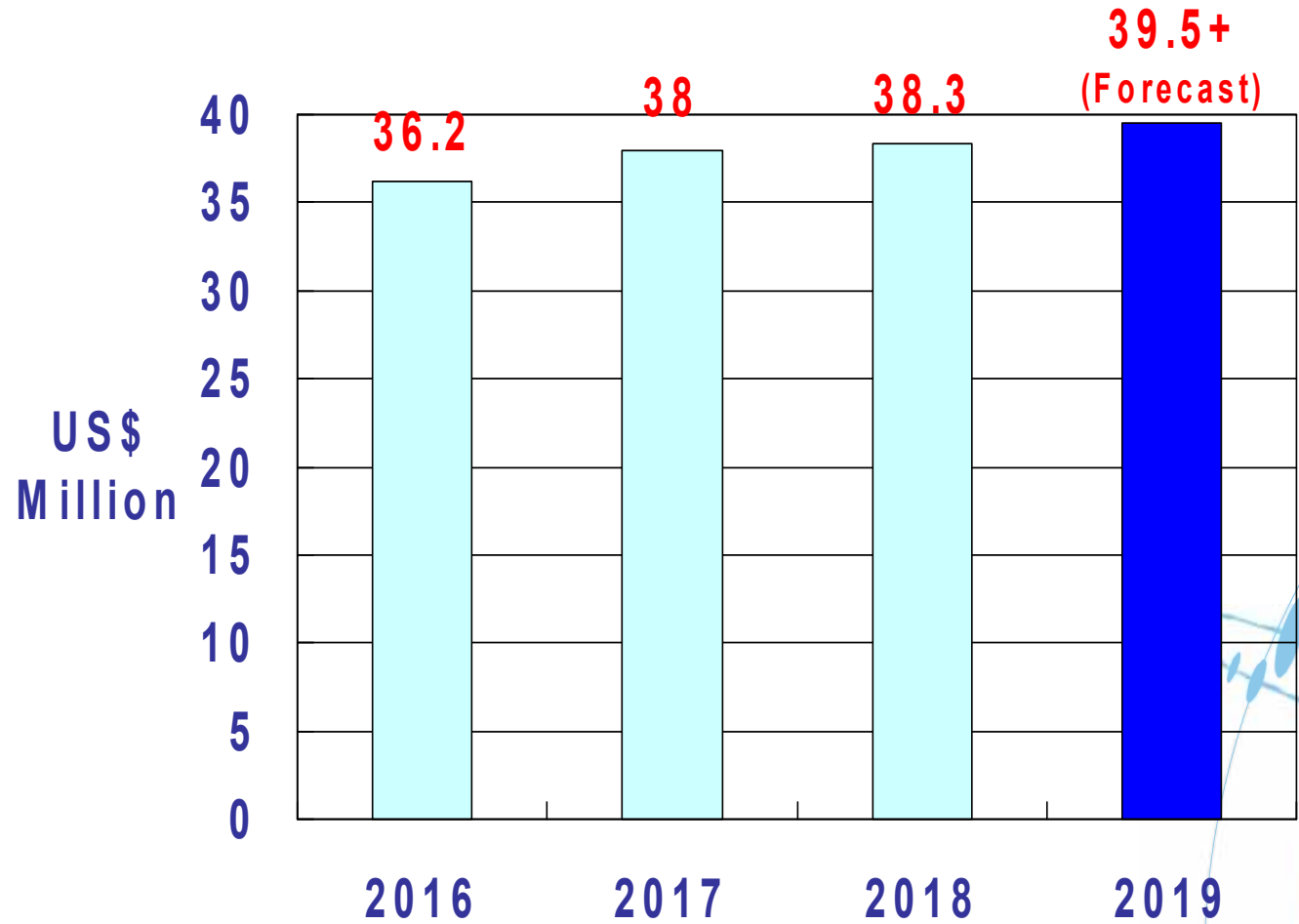
(Taipei Headquarter)



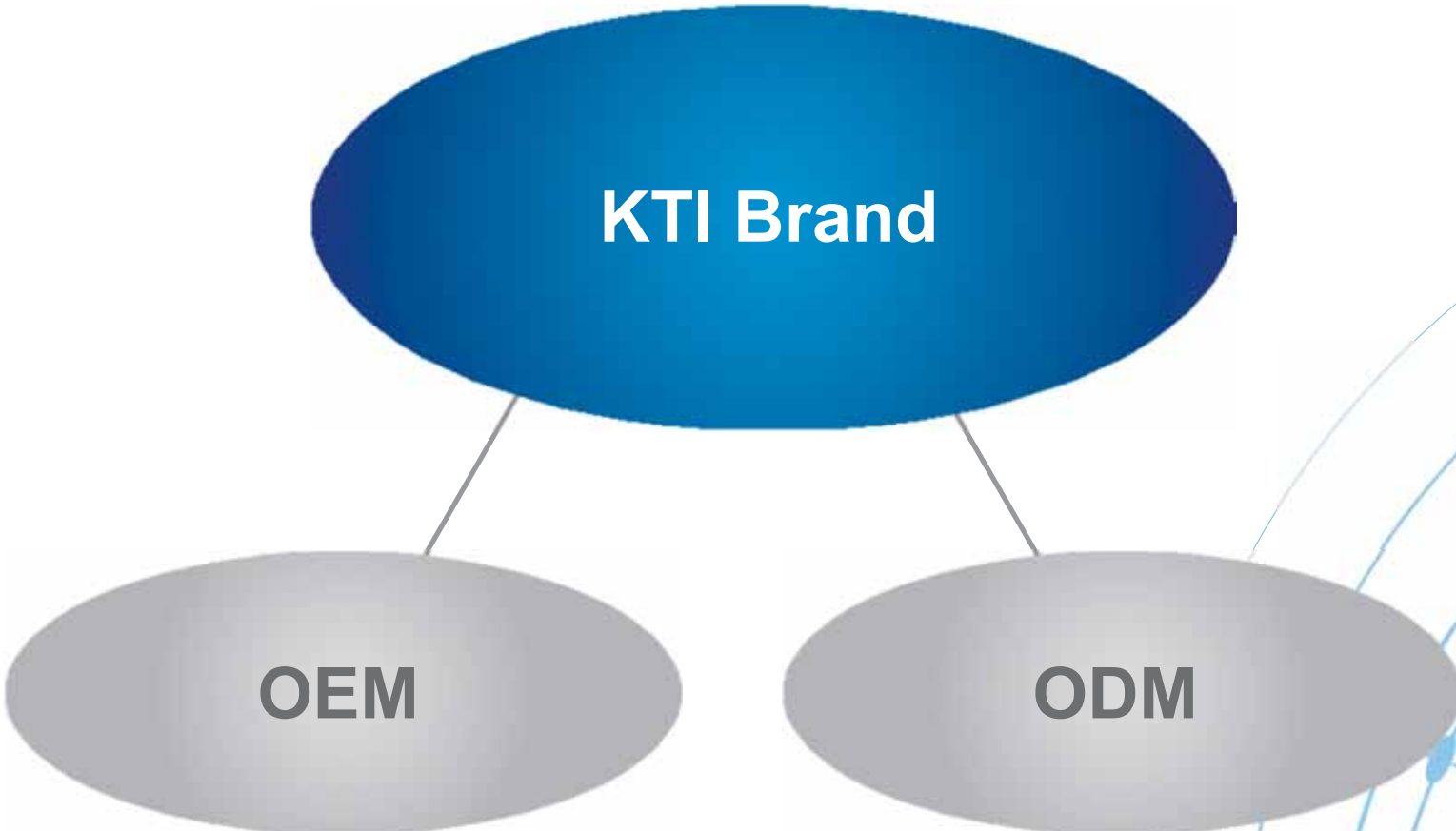
Total: 35 Persons (Headquarter in Taipei)

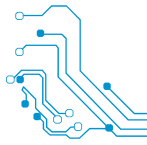
55 Persons (Subcontracted Factory in Taiwan)

KTI Turn-over

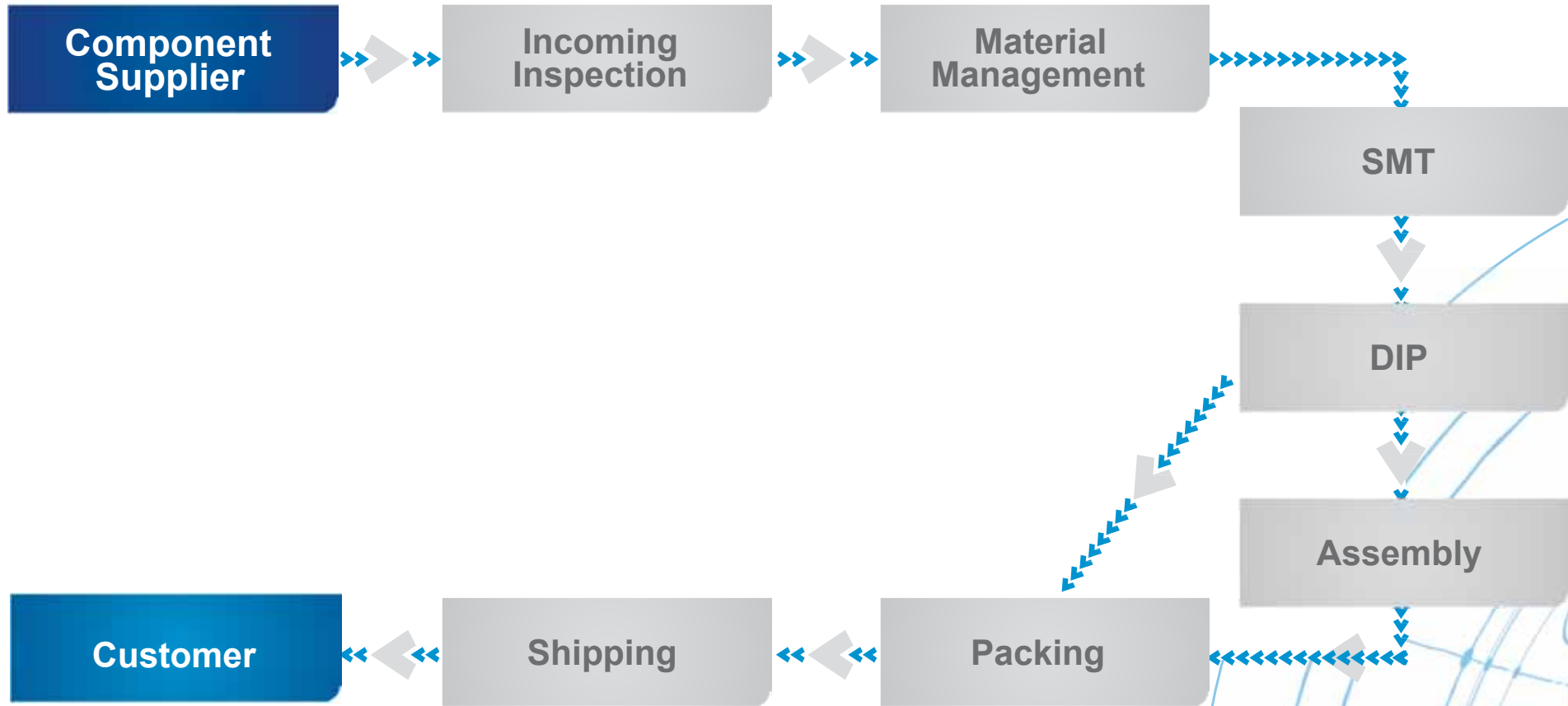


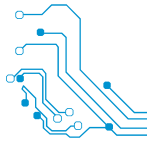
KTI Business



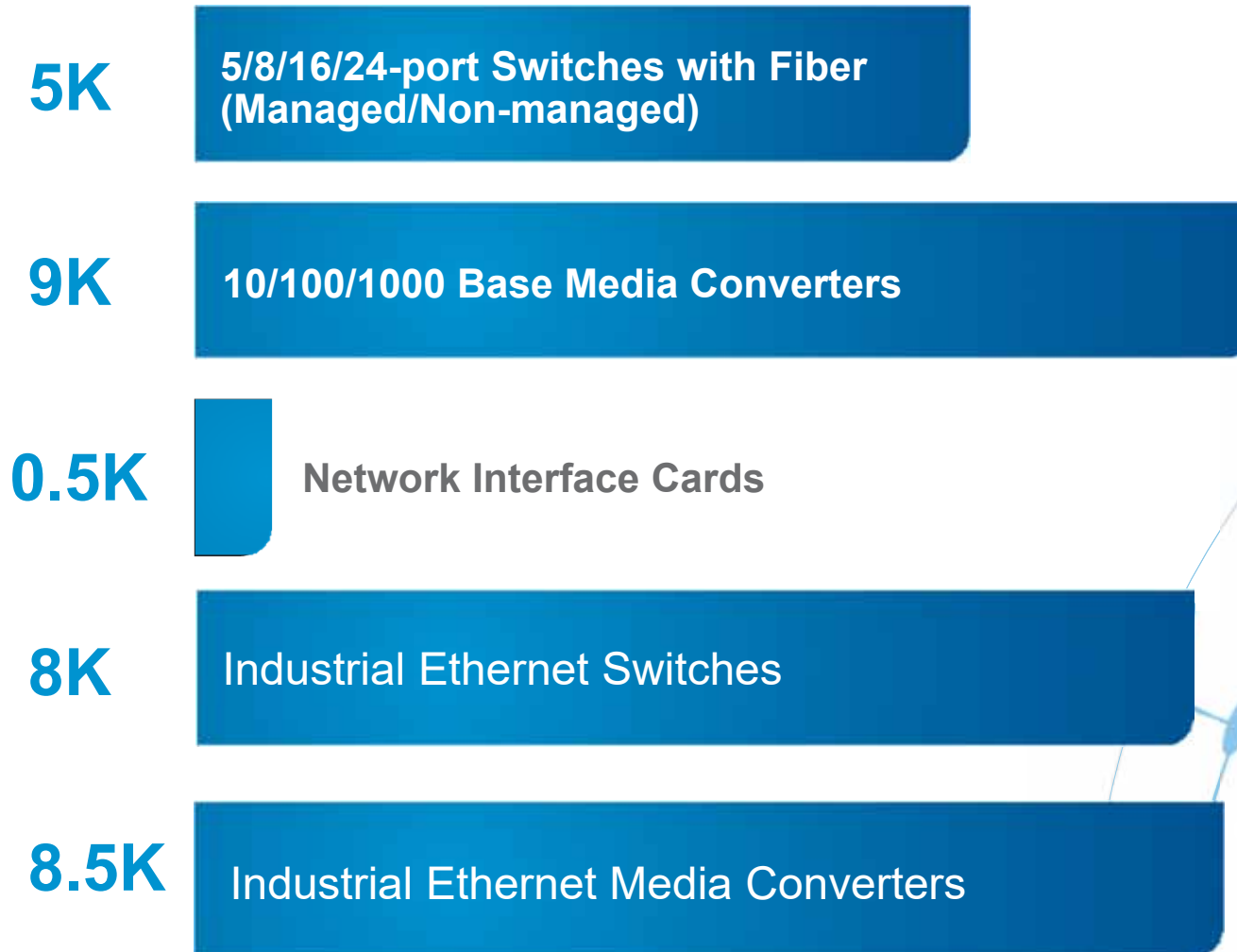


KTI Manufacturing Process





KTI Production Capacities



(Taiwan/Monthly/One shift)



Main Products



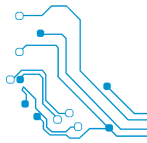
Industrial Ethernet

**10/100/1000 Base 5/8/16/24-Port
Copper/Fiber Network Switches**

10/100/1000 Base Media Converter

Media Converter Center Chassis

**Power over Ethernet (PoE) Networking
Switches, Media Converter**



KTI Product Lines (Industrial Switches)

- » *IP65/67 Rated L2 Gigabit Ethernet and Fast Ethernet Switches with PoE+ Options*

- » *Industrial Managed 24-port L2/L3 Gigabit Ethernet Switch with PoE+ feature*

- » *IEC 61850-3 IEEE 1613 Industrial Managed 12-port L2 GbE Switches with 4 dual-speed SFP Slots*

- » *Industrial Managed 10-/8-Port L2 Gigabit Ethernet Switch with 2 SFP Slots and 8/4 PoE PSE Ports*

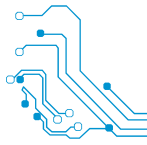
- » *Industrial Managed 6-Port L2 Gigabit Ethernet Switch with 1 GbE SFP Port*

- » *IP55 8-port Fast Ethernet L2 Switch*

- » *Industrial Managed 8-Port L2 Fast Ethernet Switch with Fiber Connectivity*

- » *Industrial 5-Port L2 Fast Ethernet Switches with 1 SFP Slot and 4 PoE PSE Ports*

- » *Industrial 5-/8-/16-Port Fast/Gigabit Ethernet Switch*



KTI Product Lines (Commercial Switches)

- » *Managed 24-Port Switch with Optional Fast Ethernet & Gigabit Ethernet Modules*

- » *Managed 24-Port Gigabit Ethernet Switches with 4 SFPs and 24 PoE+ PSE Ports*

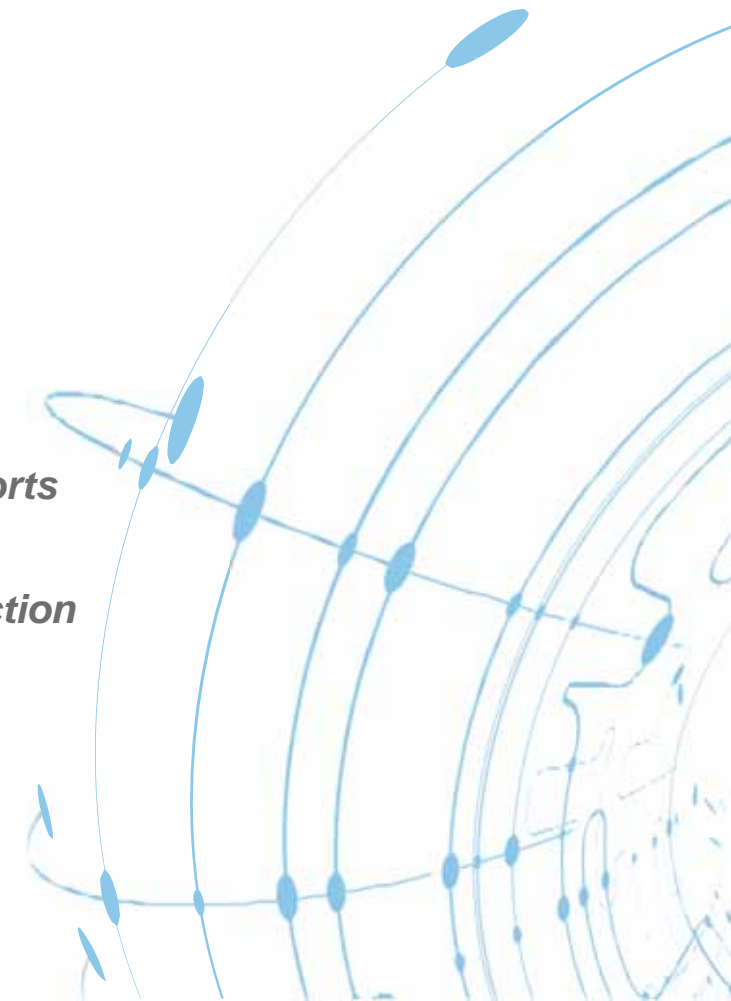
- » *Managed 8-/6-Port L2 Gigabit Ethernet Switches with 1 Dual-speed SFP Slot*

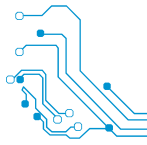
- » *5-Port GbE Switches with 1 Dual-speed SFP*

- » *Managed 7-/5-Port Fast Ethernet Switch with Fiber Connectivity*

- » *8-Port Gigabit Ethernet Switch with 4 PoE+ PSE Ports*

- » *5/8-Port Fast Ethernet Switch with 1 Fiber Connection*





KTI Product Lines (Industrial Converters)

- » ***Industrial Managed Multi-function GbE Media Converter with PoE+ Support***

- » ***IEC 61850 IEEE 1613 Media Converter with PoE++ PSE Support***

- » ***Industrial Managed 10/100/100Base-T to Dual-Speed Fiber Media Converter***

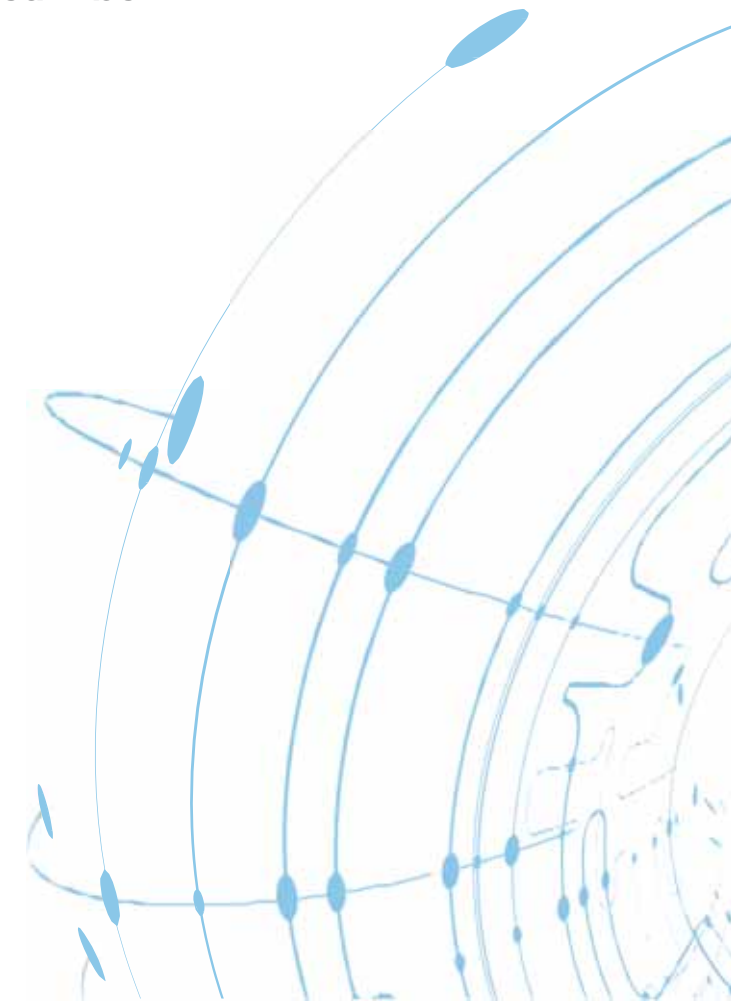
- » ***Industrial 1000 Base-T to 1000 Base-X Gigabit Media Converter***

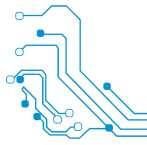
- » ***Industrial 10/100 Base-TX to 100 Base-FX Media Converter***

- » ***Industrial Optically Isolated Serial RS-232 to Fiber Converter***

- » ***Industrial Optically Isolated RS-232 to RS-422/485 Converter***

- » ***Industrial Ethernet to Serial Converter***





KTI Product Lines (Commercial Converters)

- » *16-Slot Managed & Non-Managed Media Converter Center Chassis*

- » *Managed 10/100/1000 Base-T to Dual-speed Fiber Gigabit Media Converter with PoE+ Support*

- » *Managed 10/100/1000 Base-T to Dual-speed Fiber Media Converter*

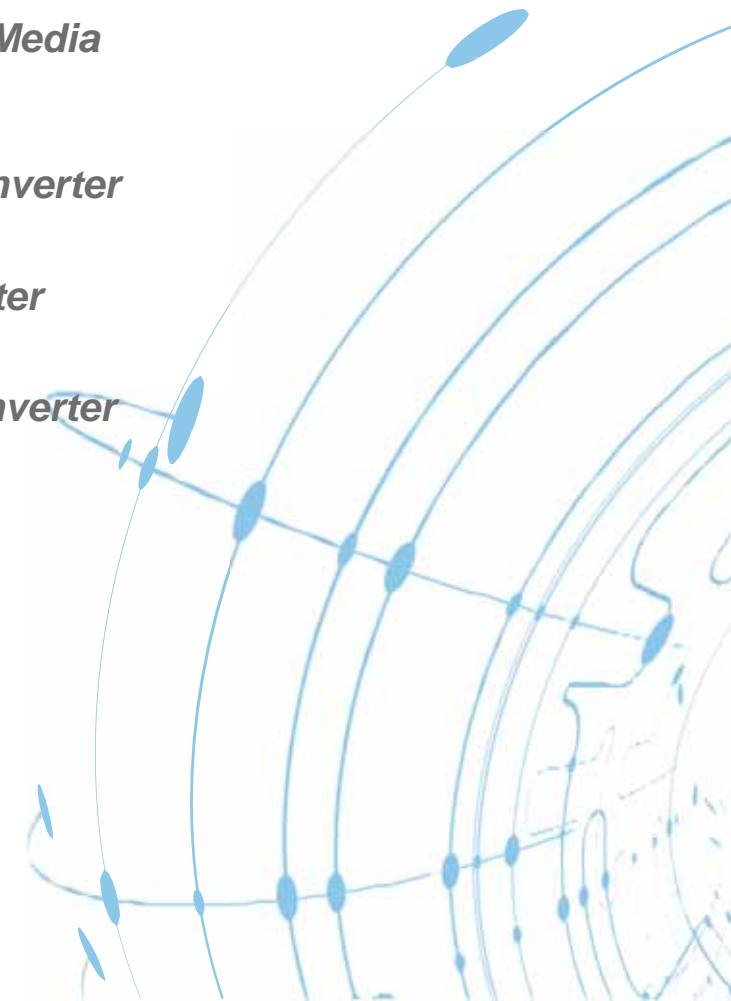
- » *10/100/1000 Base-T to Dual-Speed Fiber Media Converter*

- » *1000 Base-T to 1000 Base-X Gigabit Media Converter*

- » *Multimode to Single mode Optical Fiber Media Converter*

- » *10/100 Base-TX to 100 Base-FX Media Converter*

- » *10 Base-T to 10Base-FL Media Converter*



KTI Product Lines

(PoE—Power over Ethernet Solution)

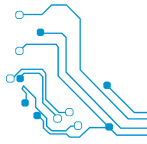
» *Industrial High Power Single-port PoE++
Mid-span Injector*

» *Industrial IEEE 802.3at High Power PoE+ Splitter*

» *Industrial 8-Port Mid-Span PoE Injector*

» *Modular 8-port Mid-span PoE Injector*

» *IEEE 802.at/802.af Mid-span PoE Injector*



KTI Product Lines (Solution Products)

- » *Industrial DIN-Rail AC-DC 24V/12V power supply*

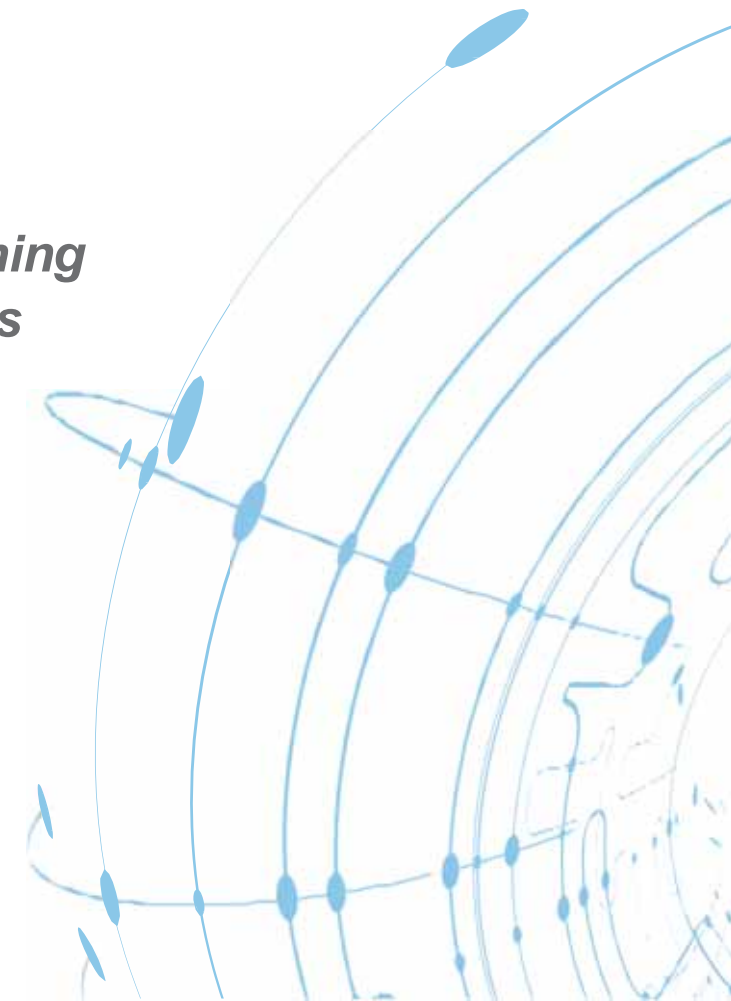
- » *Industrial-rated Redundant DC Power Input Adapter*

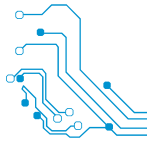
- » *Isolated DC to 48V 100W Converter*

- » *1U Rack Mountable 300W/1000W Switching Power Supply for PoE/PoE+ applications*

- » *SFP Fiber Transceivers*

- » *Optional Installation Bracket*

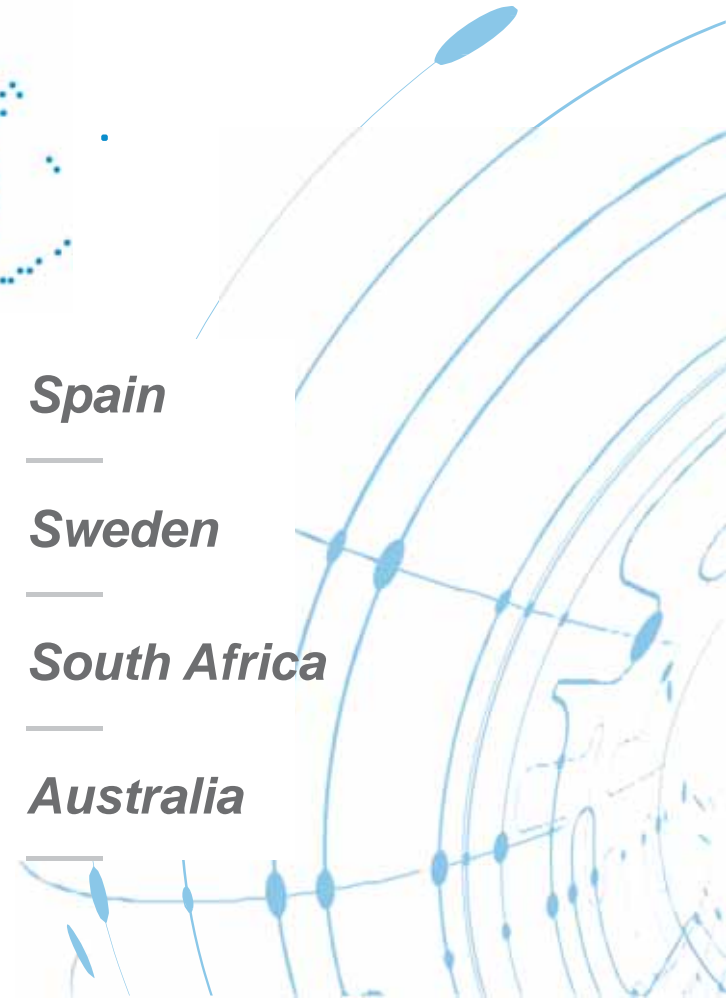




KTI Brand Partners

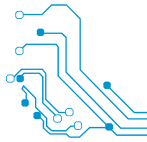


- | | | | |
|-----------------|------------------|----------------------|-----------------------|
| » <i>U.S.A</i> | » <i>Germany</i> | » <i>Netherlands</i> | » <i>Spain</i> |
| » <i>Czech</i> | » <i>Hungary</i> | » <i>Denmark</i> | » <i>Sweden</i> |
| » <i>Norway</i> | » <i>Turkey</i> | » <i>Egypt</i> | » <i>South Africa</i> |
| » <i>Japan</i> | » <i>Korea</i> | » <i>Hong Kong</i> | » <i>Australia</i> |



Customer Reference

(from Rockwell Collins, U.S.A.)



March 9, 1999

Passenger Systems
2001 West Mission Boulevard
Palo Alto, CA 94303-1020

Mr. William Sun
KTI Networks Inc.
7400 Harwin Dr., Suite 120
Houston, Texas 77036

**Rockwell
Collins**

William,

Rockwell Collins Passenger Systems is pleased to have selected KTI Networks Inc. to supply the Ethernet Switch card for our E-Hub project. Your product proved to be both reliable and durable during our screening process. The tests that we ran included 3 axis vibration up to 5.8 G RMS operational and 8.2 G RMS survival, in addition to operational thermal tests down to -40 deg C and up to 85 deg C. This type of performance from a COTS product exceeded our expectations and will facilitate our ability to meet customer commitments. I have enclosed a test report from the thermal testing for your use.

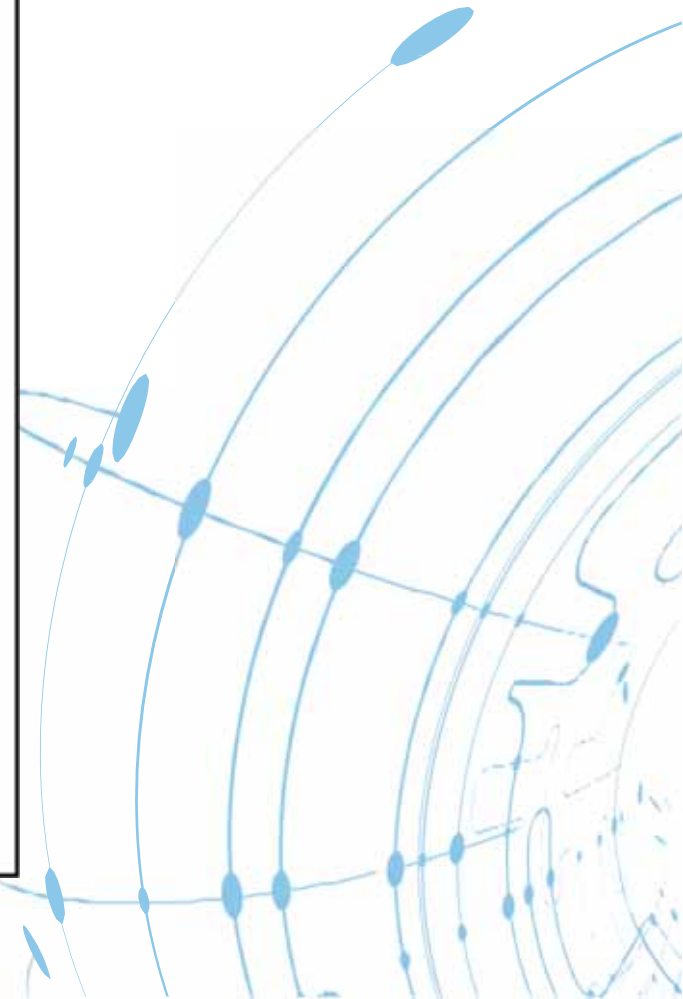
In addition to the technical performance of your product, KTI has demonstrated an ability to react quickly to our requests and deliver exceptional customer support.

We anticipate an excellent relationship with KTI on this program.

Thank you.

Chris A. Barnhart
E-Hub Project Manager

cc: Grace Adams



Customer Reference

(from Furukawa, Brazil)



LETTER OF AUTHORIZATION

Date: April 2, 2003

To: Katron Technologies Inc.
15F-7, No. 79, Sec. 1, Hsin Tai Wu Road,
Hsi-chih, Taipei Hsien,
Taiwan, R.O.C.

Subject: Authorization KTI to print Furukawa's logo on products and their related packages ordered by Furukawa Industrial S.A.

To whom it may concern:

Furukawa Industrial S.A., Hasdrubal Bellegard, 820 - CIC - ZIP 81460-120 - Curitiba - PR - Brazil, (hereinafter referred to as FISA) hereby authorizes the company, KATRON TECHNOLOGIES INC., (hereinafter referred to as KTI) to print FURUKAWA's logo on the products to be supplied by KTI to FISA strictly in according to FISA's order(s). This authorization is only valid as long as FISA places its order(s). If FISA stops its order for the products or requests KTI not to print the FURUKAWA's logo on the products, KTI shall stop printing or using FURUKAWA's logo on the products and their related packages immediately.

With the above authorization, KTI may apply the export license to export products to Brazil with detailed destinations requested by FISA's orders.

Best Regards,

Furukawa Industrial S.A.


Foad Shaikhzadeh
President


Helio J. Durigan
Operations Director

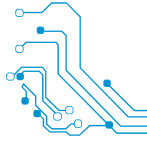


Rua Hasdrubal Bellegard, 820 - CIC - 81460-120 - Curitiba - PR Tel: 55-41-341-4236 Fax: 55-41-341-4101
<http://www.furukawa.com.br>

04/03/03 THU 04:12 [TX/RX NO 8383] 002

Customer Reference


(from Matsushita/Panasonic, Japan)




Letter of Authorization


To: KTI
15
Hi

From: Ma
60
22



KC-300D, KC-300DM





月 15 日
NCS-A-1270

To whom

Dear Sirs,

Herein we
to
authorize
center pr
Developr
Matsushit
Matsushit

Thank you

Sincerely
Matsushit

Product Highlights:

- Full wire speed performance
- Comprehensive configuration options
- Loop back test support
- Remote TP link monitoring
- Low power consumption
- Loop back test support
- Optional DIN Rail mounting
- Center Channel Installation support
- Options for SxSx communication
- Options for CWDM

10/100Base-TX to 100Base-FX Media Converters

The media converters are designed to convert 10Base-T or 100Base-T signals to/from 100Base-FX fiber signals. It is used to extend the connection distance between two connected devices via fiber cable transparently with no performance degradation. The media converters not only support existing variety of multimode and single mode fibers but also support SxSx CWDM and CWDM fiber network applications. It is also featured with design for support center channel installation with optional power redundancy and management features when a larger fiber network is required.

Key Features:

- Convert speed and media type in full wire speed
- Support 10/100Base-TX speed on TP connections, auto-regulation, and auto-MEANS-X detection
- Link fault pass through function
- Transparent to IEEE 802.1Q VLAN tagged packets
- Far End Fault function on FX port
- Support demarc, wall and DIN Rail mounting
- Support center channel installation
- Low power consumption
- Support wide range of fiber options
- Provide user accessible settings for TP port configuration/building link fault pass through function


KC-300DM Specific:

- Provides indications of remote media converter's TP port status
- Provides Loop Back Test function with connected remote media converter


Specifications:

TP Port	IEEE 802.3 10Base-T, IEEE 802.3u 100Base-TX Shielded RJ-45 jacks with Auto-MEANS-X detection Auto-regulation for speed and duplex auto-detection Forward mode with speed and duplex settings Speed for 10Mbps or 100Mbps, Full duplex or half duplex support
FX Port	IEEE 802.3u 100Base-FX compliant Forward 100Mbps, Full duplex (factory default) Far end fault function
Cable	Cat. 5, 5e or higher UTP cables MMF - 62.5/125µm, SMF - 9/125µm
LEDs	KC-300D: Power status TP Ports: LINK/ACT, Speed, Duplex status FX Ports: LINK/ACT status, Fiber signal detected KC-300DM: Power status TP Ports: LINK/ACT, Speed, Duplex status FX Ports: LINK/ACT status, Fiber signal detected Remote TP Ports: LNK, Speed, Duplex status

TP Kit Mounting Bracket KC-306



Managed Center Channel KC-100



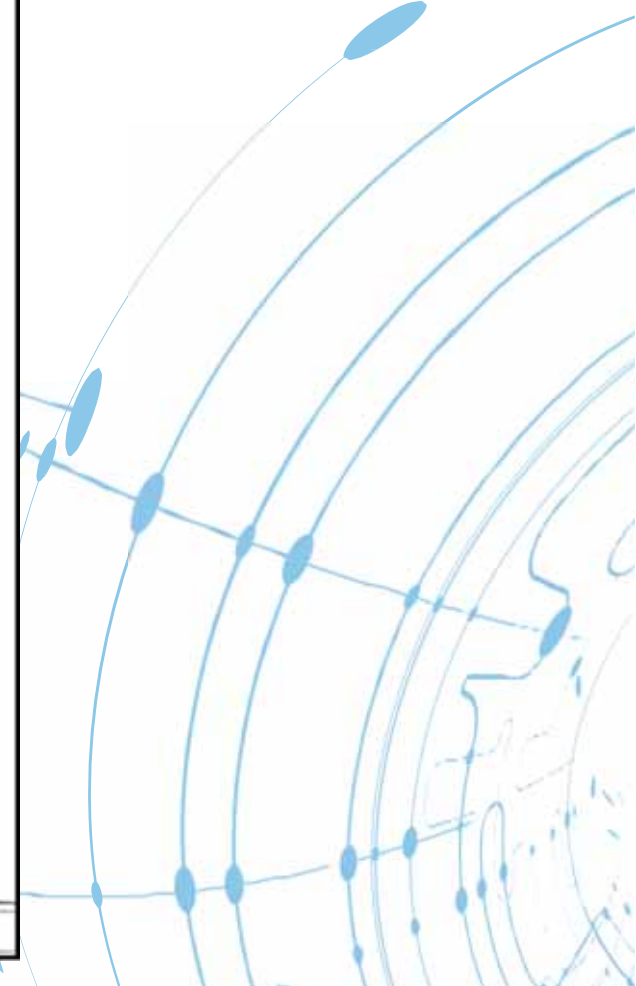
Hide
Name: Hidchiko Negishi
Title: Manager
Date: March 15, 2001

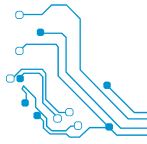
MCS-A-1270
MATSUSHITA COMMUNICATION IND.CO.,LTD

REV: 001

PAGE: /

would like
converter
or OEM
KTI to use
ducts for





KTI Synonym of Quality

All KTI products undergo a strict 5-step quality control process to guarantee a **99.75% reliability rate.**

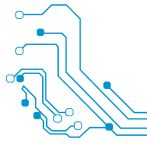
Printed circuit boards consist of 4/6 layers that can withstand the toughest stress tests in terms of vibration and resistance on all three spatial axes.

KTI NETWORKS is certified under the following quality standards (according to the various products):

ISO 9001 | ISO 9002 | FCC | CE | VCCI | ROHS | REACH | etc.

*Our equipment's **MTBF** as per the MIL-HDBK-217F standard is 429,428* hours. *(KFC-241-L SERIES).*





Key assets KTI

- » ***99.75% reliability rate.***

- » ***All KTI products undergo a 5-step quality control process.***

- » ***KTI supplies the world's leading companies supplementing top brands.***

- » ***KTI provides perhaps the best quality/price/product range ratio.***

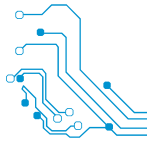
- » ***Top-notch equipment.***

- » ***Wide array of products (over 400 items).***

- » ***KTI supports its customers enabling them to implement unprecedented projects.***

- » ***A prestigious brand yet to be exploited.***





Completed projects

KTI delivers engineering and communication solutions to various sectors: telcos, engineering companies, installers, integrators, IT distributors, IT departments at large companies, etc.

KTI supplies the world's leading companies and supplements top brands while being fully compatible with other brands from the SMEs and distribution sectors.

We can compete with the leading brands and provide perhaps the best quality/price/ product range ratio, which is one of KTI's key assets.



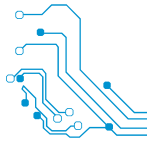
In Japan: railway, electricity companies, motorways, police stations, telcos, CATV- Fibre to the Home networks, etc

Completed projects

IN THE USA: the army, underground, public agencies, radio and television systems, many hospitals, universities countrywide, fibre network to monitor oil pipes and pumping stations from Alaska to Los Angeles, aerospace industry, etc.



The full names and details of these projects are not specified since they are subjected to confidentiality agreements. More information available upon request.



Completed projects

IN EUROPE: mining sector, factories, army quarters in Germany; motorways in Hungary; airports, railway, industrial facilities, electricity companies, aviation, army in Spain; universities and telcos in Poland, Czech Republic, Austria, etc.



Completed projects

IN SOUTH AFRICA:
World Cup stadiums,
electricity companies,
banking, railway,
hospitals, mining
sector, etc.

