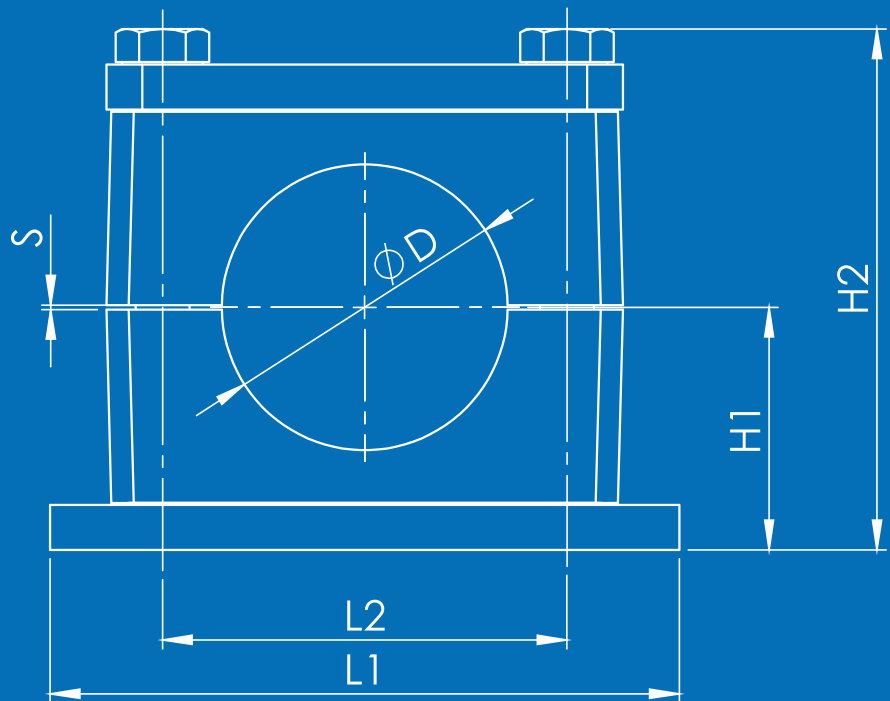


# HYDRAULIC PIPE CLAMPS



- » Industrial and Mobile Hydraulics
- » Iron Steel Industry
- » Oil and Gas Industry
- » Energy Industry
- » Automation
- » Railway Systems
- » Marine Industry
- » Mining Industry
- » Construction Machinery Industry
- » Machine Industry
- » Lubrication Systems



**LMC EUROPE:  
RELIABLE AND EASY**

LMC's Europe based company, LMC Europe B.V., is now up and running with a sales office and a warehouse in Rotterdam, Netherlands.

LMC Europe B.V. supplies wide range of LMC Clamps with a 2-3 day delivery time to all European customers and with no custom duties obligation.

**easy**  
to supply



- » A very large inventory
- » High speed delivery;  
24 - 72 hrs in all Europe
- » No custom duties
- » Fixed & low freight charges

**easy**  
to buy



- » Competitive prices;  
manufacture in Turkey
- » Certified & high product quality
- » 30+ experience in industry
- » Ship to your door if requested

**easy**  
to communicate



- » Sales office in Rotterdam
- » Fast response to your requests
- » After sales support



LMC Makina, hidrolik ve pnömatik alanında 25 yılı aşkın sürede kazandığı tecrübe ile birçok sektöre kaliteli ürünler ve çözümler sunmaya devam etmektedir. LMC Makina, hidrolik boru kelepçesi üretiminde Türkiye'nin lider firmasıdır. Plastik tapalar, hidrolik depo kapakları ve pnömatik hortum bağlantı elemanları gibi aksesuarların da üretimini yapan LMC Makina, her geçen gün ürün çeşitliliğini ve üretim kapasitesini artırmaktadır.

LMC ürünleri bugün 6 kıtada 40 'ı aşkın ülkede kullanılmaktadır. Firmamız, uzun yıllar boyunca kazandığı tecrübeyi, global pazarın hizmetine sunmaya devam etmektedir.

LMC has over 25 years of experience in manufacturing high quality and cost effective hydraulic and pneumatic components. LMC is the market leader of Turkey in hydraulic pipe clamp manufacture. LMC has expanded its product range by adding caps/plugs, filler breathers, metal pipe clamps, hose connection components... etc. Long-term experience and success gained for years from the local market is now expanding with exporting to more than 40 countries in 6 continents.

## İkiz Seri / Twin Series

DIN 3015/3

<b>Komple Kelepçe</b> Complete Clamp	43	<b>Gövde + Cıvata + Üstlük</b> Clamp Body + Bolt + Cover Plate	44	<b>Raya Uyumlu Kelepçe</b> Clamp with Rail Nut	45	<b>Kelepçe Üst Takım</b> Clamp Cover Set	46
							
Sayfa / Page	40	Sayfa / Page	40	Sayfa / Page	41	Sayfa / Page	41
<b>Kelepçe Gövdesi</b> Clamp Body	47	<b>Üst Plaka</b> Cover Plate	49	<b>Montaj Rayı</b> Mounting Rail	51	<b>Altıköşe Başlı Cıvata</b> Hexagon Head Bolt	53
							
<b>Alt Plaka</b> Weld Plate	48	<b>Çoklu Alt Plaka</b> Group Weld Plate	50	<b>Ray Somunu</b> Rail Nut	52	<b>Ara Bağlantı Cıvatası</b> Stacking Bolt	54
							
Sayfa / Page	42	Sayfa / Page	43	Sayfa / Page	44	Sayfa / Page	45
						<b>Ara Bağlantı Plakası</b> Safety Locking Plate	55
							
						Sayfa / Page	46

## KOMPLE KELEPÇELER / COMPLETE CLAMPS

Cins Type		Bağlantı Parçaları Fitting Components				Kelepçe Gövdesi Clamp Body			Boyut Dimension	
* *		* *		*	*	*	*	*	* * *	* * * *
Cins / Type		Vida Tipi / Thread Type				Renk / Colour			Ölçü / Size	
CD	Demonte / Unmounted	C	UNC	H	Siyah / Black					
CM	Montajlı / Assembled	F	UNF	M	Mavi / Blue					
		M	Metrik / Metric	S	Sarı / Yellow					
		W	Whitworth	T	Natürel / Natural					
		T	Tanımsız / Undefined	Y	Yeşil / Green					
Cıvata + Altılık Tipi / Screw - Bolt Types + Weld Plate						Gövde Tipi / Clamp Body Design				
00	GB + Standart Altılık / Standard Weld Plate					1	Kanallı / Profiled			
01	GB + Montaj Delikli Altılık / Elongated Weld Plate					2	Düz / Smooth			
28	GB + Altılıksız / Without Weld Plate					4	Elastomerli / For Elastomer Insert			
30	GB + Ray Somunlu / With Rail Nut					5	Tırtırlı / Serrated			
40	AKB + Standart Altılık / Standard Weld Plate									
41	AKB + Montaj Delikli Altılık / Elongated Weld Plate									
60	AKB + Sırt Sırt Altılık / Weld Plate for Double Clamps									
61	AKB + Sırt Sırt Montaj Delikli Altılık / Elongated Weld Plate for Double Clamps									
68	AKB + Altılıksız / Without Weld Plate									
70	AKB + Ray Somunlu / With Rail Nut									
aa	Altılıksız Cıvatasız / Without Weld Plate and Without Screw-Bolt									
GB : Gömme Başlı Cıvata (İmbus) / Socket Cap Screw						Gövde Malzemesi / Clamp Body Material				
AKB : Altı Köşe Başlı Cıvata / Hexagon Head Bolt						A	Alüminyum / Aluminum		Ölçü / Size	
						N	Polyamid / Polyamide		006.0 mm	
						T	TPE (Thermoplastic Elastomer)		----	
						P	Polipropilen / Polypropylene		----	
									406.4 mm	
Üstlük + Ara Plaka Tipi / Cover Plates + Connection Types									Grup / Group	
0	Üstlüksüz / Without Cover Plate								G0-G1.....G7-G8	
1	Üstlüklü / With Cover Plate								A1-A2.....A9-A0	
6	Ara Plakalı, Ara Cıvatalı / With Safety Locking Plate, Stacking Bolt								H2-H3	
									Standart Seri / Standard Series	
									Ağır Seri / Heavy Series	
									Ağır Seri İkiz Kelepçeler / Heavy Series Twin Design	
									İkiz Seri / Twin Series	
Metal+Kaplama Tipi / Metal+Surface Finishing									11-12-13-14-15	
0	Kaplamasız / Uncoated									
1	Fosfat / Phosphated									
2	Delta DMS									
3	Fe/Zn 8C Cr3-B / Galvaniz / Galvanised									
4	CrNi 304 / AISI 304									
6	CrNi 316 / AISI 316									
9	Çinko Nikel (Fe/ZnNi) / Zinc/Nickel									

## KELEPÇE GÖVDESİ / CLAMP BODY

*		*	*	*	*	*	*	*	*	*	*	*	*	*	*	*	*	*	*	*	*	*	*	*	*	*	*	*	*	*	*	*	*	*	*	*	*	*	*	*	*	*	*	*	*	*	*	*	*	*	*	*	*	*	*	*	*	*	*	*	*	*	*	*	*	*	*	*	*	*	*	*	*	*	*	*	*	*	*	*	*	*	*	*	*	*	*	*	*	*	*	*	*	*	*	*	*	*	*	*	*	*	*	*	*	*	*	*	*	*	*	*	*	*	*	*	*	*	*	*	*	*	*	*	*	*	*	*	*	*	*	*	*	*	*	*	*	*	*	*	*	*	*	*	*	*	*	*	*	*	*	*	*	*	*	*	*	*	*	*	*	*	*	*	*	*	*	*	*	*	*	*	*	*	*	*	*	*	*	*	*	*	*	*	*	*	*	*	*	*	*	*	*	*	*	*	*	*	*	*	*	*	*	*	*	*	*	*	*	*	*	*	*	*	*	*	*	*	*	*	*	*	*	*	*	*	*	*	*	*	*	*	*	*	*	*	*	*	*	*	*	*	*	*	*	*	*	*	*	*	*	*	*	*	*	*	*	*	*	*	*	*	*	*	*	*	*	*	*	*	*	*	*	*	*	*	*	*	*	*	*	*	*	*	*	*	*	*	*	*	*	*	*	*	*	*	*	*	*	*	*	*	*	*	*	*	*	*	*	*	*	*	*	*	*	*	*	*	*	*	*	*	*	*	*	*	*	*	*	*	*	*	*	*	*	*	*	*	*	*	*	*	*	*	*	*	*	*	*	*	*	*	*	*	*	*	*	*	*	*	*	*	*	*	*	*	*	*	*	*	*	*	*	*	*	*	*	*	*	*	*	*	*	*	*	*	*	*	*	*	*	*	*	*	*	*	*	*	*	*	*	*	*	*	*	*	*	*	*	*	*	*	*	*	*	*	*	*	*	*	*	*	*	*	*	*	*	*	*	*	*	*	*	*	*	*	*	*	*	*	*	*	*	*	*	*	*	*	*	*	*	*	*	*	*	*	*	*	*	*	*	*	*	*	*	*	*	*	*	*	*	*	*	*	*	*	*	*	*	*	*	*	*	*	*	*	*	*	*	*	*	*	*	*	*	*	*	*	*	*	*	*	*	*	*	*	*	*	*	*	*	*	*	*	*	*	*	*	*	*	*	*	*	*	*	*	*	*	*	*	*	*	*	*	*	*	*	*	*	*	*	*	*	*	*	*	*	*	*	*	*	*	*	*	*	*	*	*	*	*	*	*	*	*	*	*	*	*	*	*	*	*	*	*	*	*	*	*	*	*	*	*	*	*	*	*	*	*	*	*	*	*	*	*	*	*	*	*	*	*	*	*	*	*	*	*	*	*	*	*	*	*	*	*	*	*	*	*	*	*	*	*	*	*	*	*	*	*	*	*	*	*	*	*	*	*	*	*	*	*	*	*	*	*	*	*	*	*	*	*	*	*	*	*	*	*	*	*	*	*	*	*	*	*	*	*	*	*	*	*	*	*	*	*	*	*	*	*	*	*	*	*	*	*	*	*	*	*	*	*	*	*	*	*	*	*	*	*	*	*	*	*	*	*	*	*	*	*	*	*	*	*	*	*	*	*	*	*	*	*	*	*	*	*	*	*	*	*	*	*	*	*	*	*	*	*	*	*	*	*	*	*	*	*	*	*	*	*	*	*	*	*	*	*	*	*	*	*	*	*	*	*	*	*	*	*	*	*	*	*	*	*	*	*	*	*	*	*	*	*	*	*	*	*	*	*	*	*	*	*	*	*	*	*	*	*	*	*	*	*	*	*	*	*	*	*	*	*	*	*	*	*	*	*	*	*	*	*	*	*	*	*	*	*	*	*	*	*	*	*	*	*	*	*	*	*	*	*	*	*	*	*	*	*	*	*	*	*	*	*	*	*	*	*	*	*	*	*	*	*	*	*	*	*	*	*	*	*	*	*	*	*	*	*	*	*	*	*	*	*	*	*	*	*	*	*	*	*	*	*	*	*	*	*	*	*	*	*	*	*	*	*	*	*	*	*	*	*	*	*	*	*	*	*	*	*	*	*	*	*	*	*	*	*	*	*	*	*	*	*	*	*	*	*	*	*	*	*	*	*	*	*	*	*	*	*	*	*	*	*	*	*	*	*	*	*	*	*	*	*	*	*	*	*	*	*	*	*	*	*	*	*	*	*	*	*	*	*	*	*	*	*	*	*	*	*	*	*	*	*	*	*	*	*	*	*	*	*	*	*	*	*	*	*	*	*	*	*	*	*	*	*	*	*	*	*	*	*	*	*	*	*	*	*	*	*	*	*	*	*	*	*	*	*	*	*	*	*	*	*	*	*	*	*	*	*	*	*	*	*	*	*	*	*	*	*	*	*	*	*	*	*	*	*	*	*	*	*	*	*	*	*	*	*	*	*	*	*	*	*	*	*	*	*	*	*	*	*	*	*	*	*	*	*	*	*	*	*	*	*	*	*	*	*	*	*	*	*	*	*	*	*	*	*	*	*	*	*	*	*	*	*	*	*	*	*	*	*	*	*	*	*	*	*	*	*	*	*	*	*	*	*	*	*	*	*	*	*	*	*	*	*	*	*	*	*	*	*	*	*	*	*	*	*	*	*	*	*	*	*	*	*	*	*	*	*	*	*	*	*	*	*	*	*	*	*	*	*	*	*	*	*	*	*	*	*	*	*	*	*	*	*	*	*	*	*	*	*	*	*	*	*	*	*	*	*	*	*	*	*	*	*	*	*	*	*	*	*	*	*	*	*	*	*	*	*	*
---	--	---	---	---	---	---	---	---	---	---	---	---	---	---	---	---	---	---	---	---	---	---	---	---	---	---	---	---	---	---	---	---	---	---	---	---	---	---	---	---	---	---	---	---	---	---	---	---	---	---	---	---	---	---	---	---	---	---	---	---	---	---	---	---	---	---	---	---	---	---	---	---	---	---	---	---	---	---	---	---	---	---	---	---	---	---	---	---	---	---	---	---	---	---	---	---	---	---	---	---	---	---	---	---	---	---	---	---	---	---	---	---	---	---	---	---	---	---	---	---	---	---	---	---	---	---	---	---	---	---	---	---	---	---	---	---	---	---	---	---	---	---	---	---	---	---	---	---	---	---	---	---	---	---	---	---	---	---	---	---	---	---	---	---	---	---	---	---	---	---	---	---	---	---	---	---	---	---	---	---	---	---	---	---	---	---	---	---	---	---	---	---	---	---	---	---	---	---	---	---	---	---	---	---	---	---	---	---	---	---	---	---	---	---	---	---	---	---	---	---	---	---	---	---	---	---	---	---	---	---	---	---	---	---	---	---	---	---	---	---	---	---	---	---	---	---	---	---	---	---	---	---	---	---	---	---	---	---	---	---	---	---	---	---	---	---	---	---	---	---	---	---	---	---	---	---	---	---	---	---	---	---	---	---	---	---	---	---	---	---	---	---	---	---	---	---	---	---	---	---	---	---	---	---	---	---	---	---	---	---	---	---	---	---	---	---	---	---	---	---	---	---	---	---	---	---	---	---	---	---	---	---	---	---	---	---	---	---	---	---	---	---	---	---	---	---	---	---	---	---	---	---	---	---	---	---	---	---	---	---	---	---	---	---	---	---	---	---	---	---	---	---	---	---	---	---	---	---	---	---	---	---	---	---	---	---	---	---	---	---	---	---	---	---	---	---	---	---	---	---	---	---	---	---	---	---	---	---	---	---	---	---	---	---	---	---	---	---	---	---	---	---	---	---	---	---	---	---	---	---	---	---	---	---	---	---	---	---	---	---	---	---	---	---	---	---	---	---	---	---	---	---	---	---	---	---	---	---	---	---	---	---	---	---	---	---	---	---	---	---	---	---	---	---	---	---	---	---	---	---	---	---	---	---	---	---	---	---	---	---	---	---	---	---	---	---	---	---	---	---	---	---	---	---	---	---	---	---	---	---	---	---	---	---	---	---	---	---	---	---	---	---	---	---	---	---	---	---	---	---	---	---	---	---	---	---	---	---	---	---	---	---	---	---	---	---	---	---	---	---	---	---	---	---	---	---	---	---	---	---	---	---	---	---	---	---	---	---	---	---	---	---	---	---	---	---	---	---	---	---	---	---	---	---	---	---	---	---	---	---	---	---	---	---	---	---	---	---	---	---	---	---	---	---	---	---	---	---	---	---	---	---	---	---	---	---	---	---	---	---	---	---	---	---	---	---	---	---	---	---	---	---	---	---	---	---	---	---	---	---	---	---	---	---	---	---	---	---	---	---	---	---	---	---	---	---	---	---	---	---	---	---	---	---	---	---	---	---	---	---	---	---	---	---	---	---	---	---	---	---	---	---	---	---	---	---	---	---	---	---	---	---	---	---	---	---	---	---	---	---	---	---	---	---	---	---	---	---	---	---	---	---	---	---	---	---	---	---	---	---	---	---	---	---	---	---	---	---	---	---	---	---	---	---	---	---	---	---	---	---	---	---	---	---	---	---	---	---	---	---	---	---	---	---	---	---	---	---	---	---	---	---	---	---	---	---	---	---	---	---	---	---	---	---	---	---	---	---	---	---	---	---	---	---	---	---	---	---	---	---	---	---	---	---	---	---	---	---	---	---	---	---	---	---	---	---	---	---	---	---	---	---	---	---	---	---	---	---	---	---	---	---	---	---	---	---	---	---	---	---	---	---	---	---	---	---	---	---	---	---	---	---	---	---	---	---	---	---	---	---	---	---	---	---	---	---	---	---	---	---	---	---	---	---	---	---	---	---	---	---	---	---	---	---	---	---	---	---	---	---	---	---	---	---	---	---	---	---	---	---	---	---	---	---	---	---	---	---	---	---	---	---	---	---	---	---	---	---	---	---	---	---	---	---	---	---	---	---	---	---	---	---	---	---	---	---	---	---	---	---	---	---	---	---	---	---	---	---	---	---	---	---	---	---	---	---	---	---	---	---	---	---	---	---	---	---	---	---	---	---	---	---	---	---	---	---	---	---	---	---	---	---	---	---	---	---	---	---	---	---	---	---	---	---	---	---	---	---	---	---	---	---	---	---	---	---	---	---	---	---	---	---	---	---	---	---	---	---	---	---	---	---	---	---	---	---	---	---	---	---	---	---	---	---	---	---	---	---	---	---	---	---	---	---	---	---	---	---	---	---	---	---	---	---	---	---	---	---	---	---	---	---	---	---	---	---	---	---	---	---	---	---	---	---	---	---	---	---	---	---	---	---	---	---	---	---	---	---	---	---	---	---	---	---	---	---	---	---	---	---	---	---	---	---	---	---	---	---	---	---	---	---	---	---	---	---	---	---	---	---	---	---	---	---	---	---	---	---	---	---	---	---	---	---	---	---	---	---	---	---	---	---	---	---	---	---	---	---	---	---	---	---	---	---	---	---	---	---	---	---	---	---	---	---	---	---	---	---	---	---	---	---	---	---	---	---	---	---	---	---	---	---	---	---	---	---	---	---	---	---	---	---	---	---	---	---	---	---	---	---	---	---	---	---	---	---	---	---	---	---	---	---	---	---	---	---	---	---	---	---	---	---	---	---	---	---	---	---	---	---	---	---	---	---	---	---	---	---	---	---	---	---	---	---	---	---	---

## ELASTOMER GÖBEK / ELASTOMER INSERT

* *		*	* *		* * * *	
Cins / Type			Grup / Group		Ölçü / Size	
C4	Elastomer Göbek / Elastomer Insert		G4-G6	Standart Seri / Standard Series	006.0 mm	
			A2.....A7-A8	Ağır Seri / Heavy Series	-----	
					-----	
		Malzeme / Material			168.3 mm	
		T	TPE (Thermoplastic Elastomer)			

## METAL PARÇALAR / METAL PARTS

* *		* *		*		*		* * * *	
<b>Cins / Type</b>		<b>Tip / Design</b>		<b>Vida Tipi / Thread Type</b>		<b>Metal+Kaplama Tipi / Metal+Surface Finishing</b>		<b>Grup / Group</b>	
CA	Altlık / Weld Plate	00	Standart / Standard	C	UNC	0	Kaplamasız / Uncoated	G0-G1.....G7-G8	Standart Seri / Standard Series
CH	Ara Plaka / Safety Locking Plate	01	Montaj Delikli / Elongated	F	UNF	1	Fosfat / Phosphated	A1-A2.....A9-A0	Ağır Seri / Heavy Series
CU	Üstlük / Cover Plate	02	İkili / Double	M	Metrik / Metric	2	Delta DMS	H2-H3	Ağır Seri İkiz Kelepçeler / Heavy Series Twin Design
		03	Üçlü / Triple	W	Whitworth	3	Fe/Zn 8C Cr3-B / Galvaniz / Galvanised	I1-I2-I3-I4-I5	İkiz Seri / Twin Series
		.....	.....	T	Tanımsız / Undefined	4	CrNi 304 / AISI 304		
		.....	.....			6	CrNi 316 / AISI 316		
		20	Sırt Sırt / Double Weld Plate			9	Çinko Nikel (Fe/ZnNi) / Zinc/Nickel		
		21	Sırt Sırt Montaj Delikli / Elongated Double Weld Plate						
		27	L Altlık / Angled Weld Plate						

## CIVATA / SCREW-BOLT

* *		*		*		* * *		* * *	
<b>Cins / Type</b>		<b>Civata Tipi / Screw-Bolt Type</b>		<b>Vida Tipi / Thread Type</b>		<b>Metal+Kaplama Tipi / Metal+Surface Finishing</b>		<b>Vida Ölçüsü / Screw - Bolt Size</b>	
CC	Civata / Screw, Bolt	A	Altıköşe Başlı / Hexagon Head Bolt	C	UNC	2	Delta DMS		
		B	Ara Bağlantı / Stacking Bolt	F	UNF	3	Fe/Zn 8C Cr3-B / Galvaniz / Galvanised		
		G	Gömme Başlı Civata (İmbus) / Socket Cap Screw	M	Metrik / Metric	4	CrNi 304 / AISI 304		
				W	Whitworth	6	CrNi 316 / AISI 316		
						9	Çinko Nikel (Fe/ZnNi) / Zinc/Nickel		
									<b>Civata Boyu / Screw - Bolt Length</b>

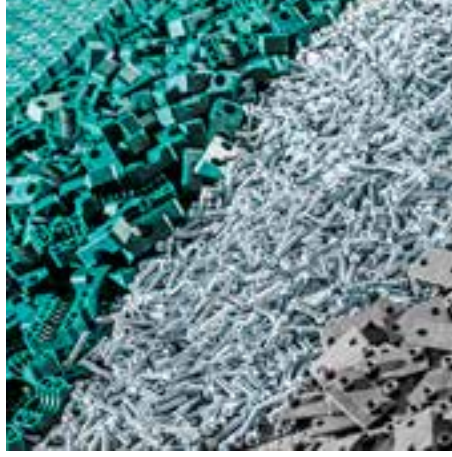
## RAY SOMUNU / RAIL NUT

* * *		*		*		*		* * *	
<b>Cins / Type</b>		<b>Tip / Design</b>		<b>Vida Tipi / Thread Type</b>		<b>Metal+Kaplama Tipi / Metal+Surface Finishing</b>		<b>Vida Ölçüsü / Screw - Bolt Size</b>	
CRS	Ray Somunu / Rail Nut	1	Standart / Standard	C	UNC	2	Delta DMS		
		2	Yuvarlak / Round	F	UNF	3	Fe/Zn 8C Cr3-B / Galvaniz / Galvanised		
		5	Contalı / With Rubber Head	M	Metrik / Metric	4	CrNi 304 / AISI 304		
				W	Whitworth	6	CrNi 316 / AISI 316		
						9	Çinko Nikel (Fe/ZnNi) / Zinc/Nickel		

## RAY / RAIL

* * *		*		* * * *		*	
<b>Cins / Type</b>		<b>Metal+Kaplama Tipi / Metal+Surface Finishing</b>		<b>Ölçü / Size</b>		<b>Boy / Length</b>	
CRY	Ray / Rail	0	Kaplamasız / Uncoated				
		2	Delta DMS				
		3	Fe/Zn 8C Cr3-B / Galvaniz / Galvanised				
		4	CrNi 304 / AISI 304				
		6	CrNi 316 / AISI 316				
		9	Çinko Nikel (Fe/ZnNi) / Zinc/Nickel				





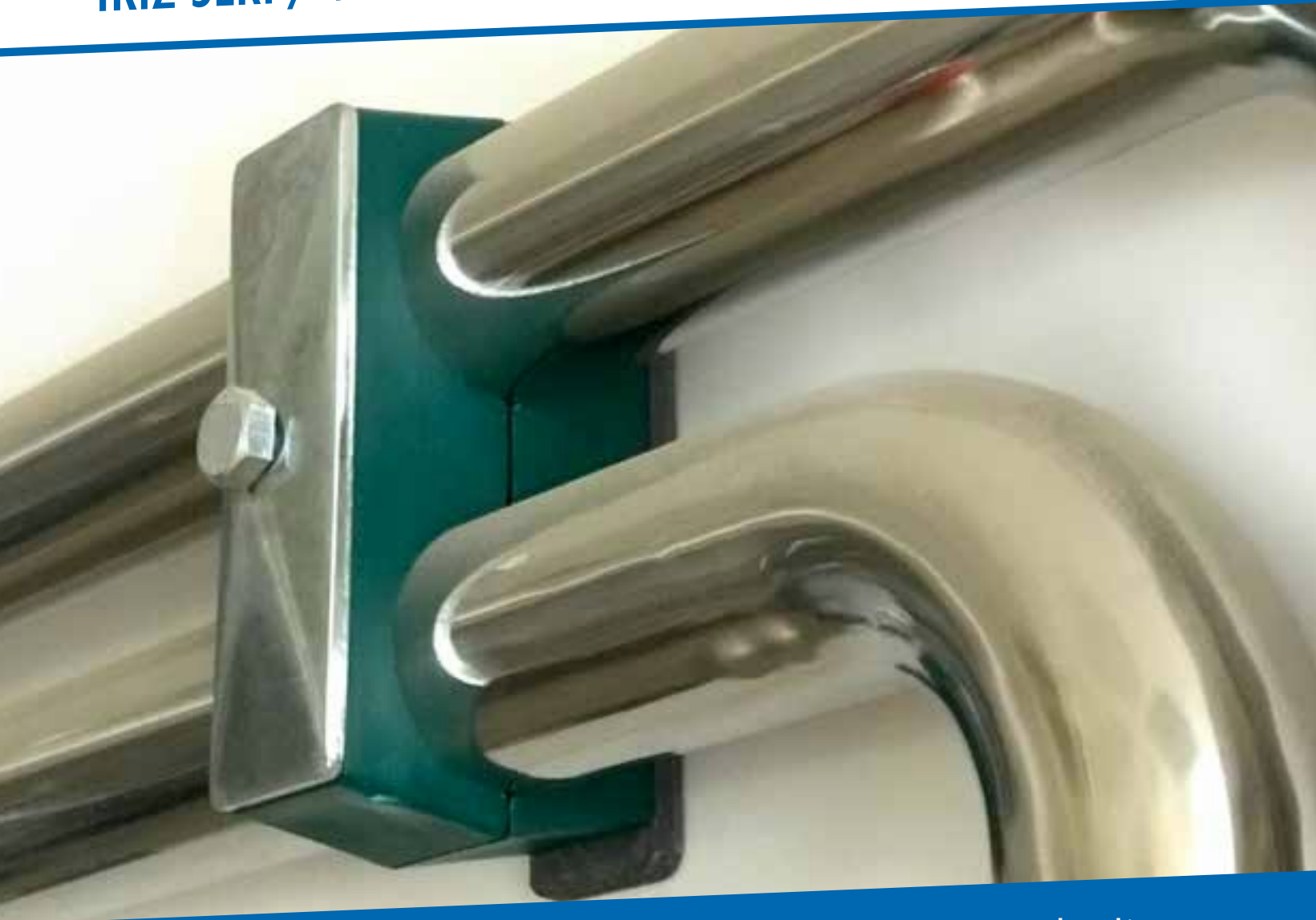
LMC Hidrolik Boru Kelepçeleri; boru montajlarında hız, düzgünlük ve temizlik sağlamaları nedeniyle endüstriyel alanlarda vazgeçilmez makina elemanlarıdır. LMC Hidrolik Boru Kelepçeleri; endüstriyel standartlara uygun olarak üretilmektedir. LMC Hidrolik Boru Kelepçeleri'nin kullanılması; sistemlerde oluşacak ses ve titreşimi azaltarak, operatör ve sistemlerin daha sağlıklı ve güvenli çalışmasını sağlar. LMC Hidrolik Boru Kelepçeleri; iş makinalarında, enerji nakil hatlarında, gemi hidroliğinde ve tüm endüstriyel sahalarda rahatlıkla kullanılabilir. LMC Hidrolik Boru Kelepçeleri; özellikle iş makinalarında meydana gelen titreşimleri absorbe etmelerinden dolayı çevre korumada önemli rol almaktadır. LMC Hidrolik Boru Kelepçeleri; enerji sektörünün önemli projelerinde, yüksek gerilim kablolarının güvenli sabitlenmesi için kullanılmaktadır. LMC Hidrolik Boru Kelepçeleri; gemi imalatında, uzun boru hatlarının sorunsuz çalışmasını sağlamak için kullanılan önemli aksesuarlardır.

LMC Hydraulic Pipe Clamps are indispensable machinery components that provide quick and easy pipes/hoses installation together with a clean and rational pipeline. LMC Hydraulic Pipe Clamps are manufactured according to international standards. Using LMC Hydraulic Pipe Clamps reduces noise and vibration on the machinery significantly having a direct effect on the users' health and safety as well as the machinery. While applications of LMC Hydraulic Pipe Clamps are boundless, most frequent fields of utilization include but not limited to; operating machinery, energy transfer lines, marine hydraulics and all industrial areas. LMC Hydraulic Pipe Clamps have an important role in environmental protection; by especially absorbing the vibrations of the construction equipments. LMC Hydraulic Pipe Clamps are used in energy industries' critical projects to fix the high voltage cables safely. LMC Hydraulic Pipe Clamps are one of the most important accessories used in naval construction to ensure problem-free operation of long pipelines.





## İKİZ SERİ / TWIN SERIES





Metal + Kaplama Tipi		Gövde Malzemesi	
Metal + Surface Finishing		Clamp Body Material	
0	Kaplamasız / Uncoated	A	Alüminyum / Aluminum
1	Fosfat / Phosphated / Fe/Znph	N	Polyamid / Polyamide
3	Galvaniz / Galvanized / Fe/Zn 8C Cr3-B	T	TPE
4	CrNi 304 AISI 304	P	Polipropilen / Polypropylene
6	CrNi 316 AISI 316		
9	Cinko Nikel / Zinc Nickel Fe/ZnNi		

**Farklı malzeme talepleriniz için lütfen  
LMC Makina'ya danışınız.**

For different material request please consult LMC Makina.

[illegible]

**Gövde + Cıvata + Üstlük**  
Clamp Body + Bolt + Cover Plate

44

The technical drawing shows a side view of a clamp assembly. It consists of a central body with two circular holes, each with a diameter of  $\varnothing D$ . The total width of the body is  $L1$ , and the distance between the centers of the two holes is  $L2$ . The total height is  $H2$ , and the height of the central body is  $H1$ . A cover plate of thickness  $s$  is shown on top, secured by a bolt. A photograph of the actual green-painted metal part is shown to the right of the drawing.

Genişlik / Width: 30 mm

C	D	6	8	M	I	3	P	I	I	X	X	X	.	X
							▼ <b>Metel + Kaplama Tipi</b> Metal + Surface Finishing	▼ <b>Gövde Materyali</b> Clamp Body Material	▼ <b>Gövde Renk</b> Clamp Body Colour	▼ <b>Grup</b> Group			▼ <b>Ölçü</b> Size	

Grup	Diş Çap (ØD)	Anma Çapı (R) Boru Diş	Diş Çap (ØD)
Group	O.D. of Pipe / Tube/ Hose mm	Nominal Bore Pipe inch	O.D. of Pipe / Tube/ Hose inch
I1	6		
	6.4		1/4
	8		5/16
	9.5		3/8
	10	R 1/8	
	12		
I2	12.7		1/2
	13.5	R 1/4	
	14		
	15		
	16		5/8
	17.2	R 3/8	
I3	18		
	19		3/4
	20		
	21.3	R 1/2	
	22		7/8
	23		
I4	25		
	25.4		1
	26.9	R 3/4	
	28		
I5	30		
	32		1 1/4
	33.7	R 1	
	35		
	38		1 1/2
	40		
I5	42	R 1 1/4	

Ölçü Tablosu					Sipariş Kodu
Dimension Table					Order Code
L1	L2	H1	H2	S min.	
37	20	16.5	41	0.6	CM40M11P1YI1006.0
					CM40M11P1YI1006.4
					CM40M11P1YI1008.0
					CM40M11P1YI1009.5
					CM40M11P1YI1010.0
55	29	18.5	44.5	0.7	CM40M11P1YI1012.0
					CM40M11P1YI2012.7
					CM40M11P1YI2013.5
					CM40M11P1YI2014.0
					CM40M11P1YI2015.0
70	36	23.5	54.5	0.7	CM40M11P1YI2016.0
					CM40M11P1YI2017.2
					CM40M11P1YI2018.0
					CM40M11P1YI3019.0
					CM40M11P1YI3020.0
85	45	25.5	58.5	0.7	CM40M11P1YI3021.3
					CM40M11P1YI3022.0
					CM40M11P1YI3023.0
					CM40M11P1YI3025.0
					CM40M11P1YI3025.4
110	56	32	71.5	0.7	CM40M11P1YI4026.9
					CM40M11P1YI4028.0
					CM40M11P1YI4030.0
110	56	32	71.5	0.7	CM40M11P1YI5032.0
					CM40M11P1YI5033.7
					CM40M11P1YI5035.0
					CM40M11P1YI5038.0
					CM40M11P1YI5040.0
110	56	32	71.5	0.7	CM40M11P1YI5042.0

Ölçü Tablosu					Sipariş Kodu
Dimension Table					Order Code
L1	L2	H1	H2	S min.	
36	20	13.5	38	0.6	CD68M13P1YI1006.0
					CD68M13P1YI1006.4
					CD68M13P1YI1008.0
					CD68M13P1YI1009.5
					CD68M13P1YI1010.0
53	29	13.5	39.5	0.7	CD68M13P1YI1012.0
					CD68M13P1YI2012.7
					CD68M13P1YI2013.5
					CD68M13P1YI2014.0
					CD68M13P1YI2015.0
67	36	18.5	49.5	0.7	CD68M13P1YI2016.0
					CD68M13P1YI2017.2
					CD68M13P1YI2018.0
					CD68M13P1YI3019.0
					CD68M13P1YI3020.0
82	45	20.5	53.5	0.7	CD68M13P1YI3021.3
					CD68M13P1YI3022.0
					CD68M13P1YI3023.0
					CD68M13P1YI3025.0
					CD68M13P1YI3025.4
106	56	27	66.5	0.7	CD68M13P1YI4026.9
					CD68M13P1YI4028.0
					CD68M13P1YI4030.0
					CD68M13P1YI5032.0
					CD68M13P1YI5033.7
					CD68M13P1YI5035.0
					CD68M13P1YI5038.0
					CD68M13P1YI5040.0
					CD68M13P1YI5042.0
					CD68M13P1YI5044.0

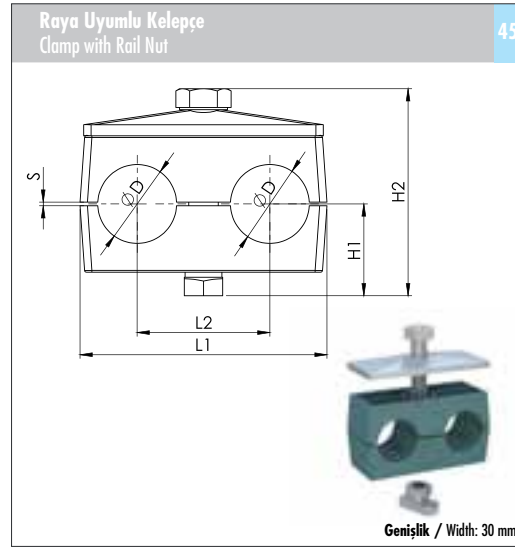
\* İstek üzerine, ikiz seri boru kelepçelerinin delikleri birbirinden farklı caplarda da üretilabilmektedir.

\* In twin series pipe clamps, the diameter of each pipe hole can be produced with different sizes upon request.

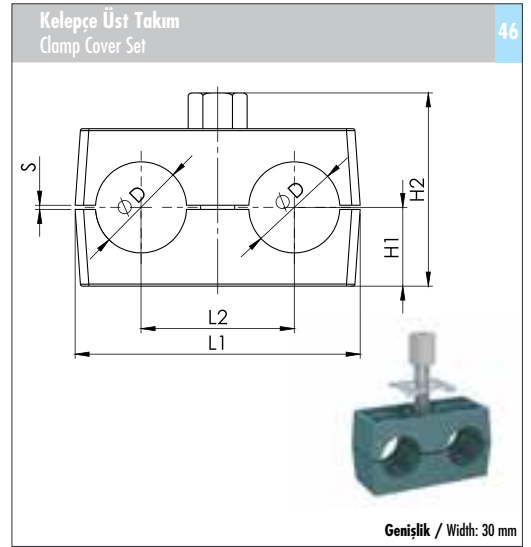
Metal + Kaplama Tipi Metal + Surface Finishing		Gövde Malzemesi Clamp Body Material	
0	Kaplamasız / Uncoated	A	Alüminyum / Aluminum
1	Fosfat / Phosphated / Fe/Znph	N	Polyamid / Polyamide
3	Galvaniz / Galvanized / Fe/Zn BC Cr3-B	T	TPE
4	CrNi 304 AISI 304	P	Polipropilen / Polypropylene
6	CrNi 316 AISI 316		
9	Çinko Nikel / Zinc Nickel / Fe/ZnNi		

Farklı malzeme talepleriniz için lütfen LMC Makina'ya danışınız.

For different material request please consult LMC Makina.



C	D	7	0	M	1	3	P	1	Y	I	I	X	X	X	.	X
<p>             Metal + Kaplama Tipi              Metal + Surface Finishing              Gövde Malzemesi              Clamp Body Material              Gövde Renk              Clamp Body Colour              Grup              Group              Ölçü              Size           </p>																



C	D	a	a	M	6	3	P	1	Y	I	I	X	X	X	.	X
<p>             Metal + Kaplama Tipi              Metal + Surface Finishing              Gövde Malzemesi              Clamp Body Material              Gövde Renk              Clamp Body Colour              Grup              Group              Ölçü              Size           </p>																

Grup Group	Dış Çap (ØD) O.D. of Pipe / Tube / Hose mm	Anma Çapı (R) Boru Dış Nominal Bore Pipe inch	Dış Çap (ØD) O.D. of Pipe / Tube / Hose inch
I1	6		
	6.4		1/4
	8		5/16
	9.5		3/8
	10	R 1/8	
	12		
I2	12.7		1/2
	13.5	R 1/4	
	14		
	15		
	16		5/8
	17.2	R 3/8	
I3	18		
	19		3/4
	20		
	21.3	R 1/2	
	22		7/8
	23		
I4	25		
	25.4		1
	26.9	R 3/4	
	28		
	30		
	32		1 1/4
I5	33.7	R 1	
	35		
	38		1 1/2
	40		
	42	R 1 1/4	

Ölçü Tablosu Dimension Table					Sipariş Kodu Order Code
L1	L2	H1	H2	S min.	
36	20	20.5	45	0.6	CD70M13P1YI1006.0
					CD70M13P1YI1006.4
					CD70M13P1YI1008.0
					CD70M13P1YI1009.5
					CD70M13P1YI1010.0
					CD70M13P1YI1012.0
53	29	20.5	46.5	0.7	CD70M13P1YI2012.7
					CD70M13P1YI2013.5
					CD70M13P1YI2014.0
					CD70M13P1YI2015.0
					CD70M13P1YI2016.0
					CD70M13P1YI2017.2
67	36	25.5	56.5	0.7	CD70M13P1YI2018.0
					CD70M13P1YI3019.0
					CD70M13P1YI3020.0
					CD70M13P1YI3021.3
					CD70M13P1YI3022.0
					CD70M13P1YI3023.0
82	45	27.5	60.5	0.7	CD70M13P1YI3025.0
					CD70M13P1YI3025.4
					CD70M13P1YI4026.9
					CD70M13P1YI4028.0
					CD70M13P1YI4030.0
					CD70M13P1YI5032.0
106	56	34	73.5	0.7	CD70M13P1YI5033.7
					CD70M13P1YI5035.0
					CD70M13P1YI5038.0
					CD70M13P1YI5040.0
					CD70M13P1YI5042.0

Ölçü Tablosu Dimension Table					Sipariş Kodu Order Code
L1	L2	H1	H2	S min.	
36	20	13.5	33	0.6	CDaaM63P1YI1006.0
					CDaaM63P1YI1006.4
					CDaaM63P1YI1008.0
					CDaaM63P1YI1009.5
					CDaaM63P1YI1010.0
					CDaaM63P1YI1012.0
53	29	13.5	33	0.7	CDaaM63P1YI2012.7
					CDaaM63P1YI2013.5
					CDaaM63P1YI2014.0
					CDaaM63P1YI2015.0
					CDaaM63P1YI2016.0
					CDaaM63P1YI2017.2
67	36	18.5	43	0.7	CDaaM63P1YI2018.0
					CDaaM63P1YI3019.0
					CDaaM63P1YI3020.0
					CDaaM63P1YI3021.3
					CDaaM63P1YI3022.0
					CDaaM63P1YI3023.0
82	45	20.5	47	0.7	CDaaM63P1YI3025.0
					CDaaM63P1YI3025.4
					CDaaM63P1YI4026.9
					CDaaM63P1YI4028.0
					CDaaM63P1YI4030.0
					CDaaM63P1YI5032.0
106	56	27	60	0.7	CDaaM63P1YI5033.7
					CDaaM63P1YI5035.0
					CDaaM63P1YI5038.0
					CDaaM63P1YI5040.0
					CDaaM63P1YI5042.0

\* İstek üzerine, ikiz seri boru kelepçelerinin delikleri birbirinden farklı çaplarda da üretilebilmektedir.

\* In twin series pipe clamps, the diameter of each pipe hole can be produced with different sizes upon request.

Göyde Matzemesi		Metal + Kaplama Tipi		Vida Tipi	
Clamp Body Material		Metal + Surface Finishing		Thread Type	
A	Alüminyum / Aluminum	0	Kaplamasız / Uncoated	C	UNC
N	Polyamid / Polyamide	1	Fosfat / Phosphated / Fe/Znph	F	UNF
T	TPE	3	Galvaniz / Galvanized / Fe/Zn 8C Cr3-B	M	Metrik / Metric
P	Polipropilen / Polypropylene	4	CrNi 304 AISI 304	W	Whitworth
		6	CrNi 316 AISI 316		
		9	Çinko Nikel / Zinc Nickel / Fe/ZnNi		

**Farklı malzeme talepleriniz için lütfen LMC Makina'ya danışınız.**

For different material request please consult LMC Makina.

**Kelepçe Gövdesi**  
Clamp Body

47

The technical drawing shows a cross-section of a clamp body. It is a rectangular block with two circular holes on the left side, each with a diameter of  $\varnothing D$ . The distance between the centers of these holes is  $L2$ , and the distance from the center of the leftmost hole to the right edge of the block is  $L1$ . The total width of the block is  $S$ . The height of the block is  $H2$ , and the height of the central rectangular section is  $H1$ . A 3D perspective view of the clamp body is shown below the drawing, highlighting its green color and the two circular holes.

Genişlik / Width: 30 mm

C	2	P	I	Y	I	X	X	X	.	X
		Gövde Mucizesi Clamp Body Material	Gövde Tipi Clamp Body Design	Gövde Renk Clamp Body Colour	Grup Group			Ölçü Size		

### Alt Plaka

Weld Plate

48

The technical drawing illustrates the dimensions of the Alt Plaka (Weld Plate). The side view shows a plate with a thickness of  $S$  and a central hole with a diameter of  $\varnothing D$ . The front view shows a rectangular plate with a length of  $L$  and a width of  $30$ . The distance from the center of the hole to the bottom edge is  $G$ . A small dimension of  $6$  is indicated at the bottom of the side view. A 3D perspective view of the plate is shown at the bottom right.

C	A	0	0	M	I	I	I
				Video Tipi Thread type	Metal + Kaplama Tipi Metal + Surface finishing		Group Group

Grup	Diş Çap (ØD)	Anma Çapı (R) Boru Diş	Diş Çap (ØD)
Group	O.D. of Pipe / Tube/ Hose mm	Nominal Bore Pipe inch	O.D. of Pipe / Tube/ Hose inch
I1	6		
	6.4		1/4
	8		5/16
	9.5		3/8
	10	R 1/8	
	12		
I2	12.7		1/2
	13.5	R 1/4	
	14		
	15		
	16		5/8
	17.2	R 3/8	
	18		
I3	19		3/4
	20		
	21.3	R 1/2	
	22		7/8
	23		
	25		
	25.4		1
I4	26.9	R 3/4	
	28		
	30		
I5	32		1 1/4
	33.7	R 1	
	35		
	38		1 1/2
	40		
	42	R 1 1/4	

Ölçü Tablosu					Sipariş Kodu
Dimension Table					Order Code
L1	L2	H1	H2	S min.	
36	20	13.5	27	0.6	C2P1YI1006.0
					C2P1YI1006.4
					C2P1YI1008.0
					C2P1YI1009.5
					C2P1YI1010.0
C2P1YI1012.0					
53	29	13.5	27	0.7	C2P1YI2012.7
					C2P1YI2013.5
					C2P1YI2014.0
					C2P1YI2015.0
					C2P1YI2016.0
C2P1YI2017.2					
C2P1YI2018.0					
67	36	18.5	37	0.7	C2P1YI3019.0
					C2P1YI3020.0
					C2P1YI3021.3
					C2P1YI3022.0
					C2P1YI3023.0
C2P1YI3025.0					
C2P1YI3025.4					
82	45	20.5	41	0.7	C2P1YI4026.9
					C2P1YI4028.0
					C2P1YI4030.0
106	56	27	54	0.7	C2P1YI5032.0
					C2P1YI5033.7
					C2P1YI5035.0
					C2P1YI5038.0
					C2P1YI5040.0
C2P1YI5042.0					

Ölçü Tablosu				Sipariş Kodu
Dimension Table				Order Code
L	S	ØD1	G	
37	3	12	M6 1/4-20 UNC	CA00M111
55	5	14	M8 5/16-18 UNC	CA00M112
70	5	14	M8 5/16-18 UNC	CA00M113
85	5	14	M8 5/16-18 UNC	CA00M114
110	5	14	M8 5/16-18 UNC	CA00M115

\* İstek üzerine, ikiz seri boru kelepçelerinin delikleri birbirinden farklı çaplarda da üretilebilmektedir.

\* In twin series pipe clamps, the diameter of each pipe hole can be produced with different sizes upon request.

Metal + Kaplama Tipi		Vida Tipi	
Metal + Surface Finishing		Thread Type	
0	Kaplamaşız / Uncoated	C	UNC
1	Fosfat / Phosphated / Fe/Znph	F	UNF
3	Galvaniz / Galvanized / Fe/Zn 8C Cr3-B	M	Metrik / Metric
4	CrNi 304 AISI 304	W	Whitworth
6	CrNi 316 AISI 316		
9	Çinko Nikel / Zinc Nickel Fe/ZnNi		

**Farklı malzeme talepleriniz için lütfen  
LMC Makina'ya danışınız.**

For different material request please consult LMC Makina.

**Üst Plaka**  
Cover Plate

49

The technical drawing shows a rectangular cover plate with the following dimensions and features:

- Top edge thickness: 3
- Bottom edge thickness: 7
- Overall width: 30
- Overall height: L
- Central circular hole with diameter  $\varnothing D$
- Diagonal reinforcement lines forming an 'X' shape across the plate.

A 3D perspective view of the cover plate is shown below the technical drawing.

C	U	0	0	T	3	I	I
					Medel + Kaplanes Tiipi Medel + Surfade Finishing		Grup Grup

Technical drawing of the Coklu Alt Plaka (Multi-Hole Base Plate) showing side and front views with dimensions.

Dimensions and labels:

- $\text{ØD1}$ : Hole diameter
- $S$ : Spacing between holes (side view)
- $L1$ : Total length of the plate (front view)
- $L2$ : Distance from the top edge to the first hole (front view)
- $L3$ : Distance between the first and second holes (front view)
- $G$ : Distance from the bottom edge to the first hole (front view)
- $30$ : Total width of the plate (front view)
- $6$ : Thickness of the plate (side view)

3D perspective view of the plate is also shown.

C	A	0	5	M	I	I	I
				Video Tip Thread Type	Metal + Knapen Tip Metal + Surface Finishing	Group Group	

Grup	Diş Çap (ØD)	Anma Çapı (R) Boru Diş	Diş Çap (ØD)
Group	O.D. of Pipe / Tube/Hose mm	Nominal Bore Pipe inch	O.D. of Pipe / Tube/Hose inch
I1	6		
	6.4		1/4
	8		5/16
	9.5		3/8
	10	R 1/8	
	12		
I2	12.7		1/2
	13.5	R 1/4	
	14		
	15		
	16		5/8
	17.2	R 3/8	
I3	18		
	19		3/4
	20		
	21.3	R 1/2	
	22		7/8
	23		
I4	25		
	25.4		1
	26.9	R 3/4	
I5	28		
	30		
	32		1 1/4
I5	33.7	R 1	
	35		
	38		1 1/2
	40		
	42	R 1 1/4	

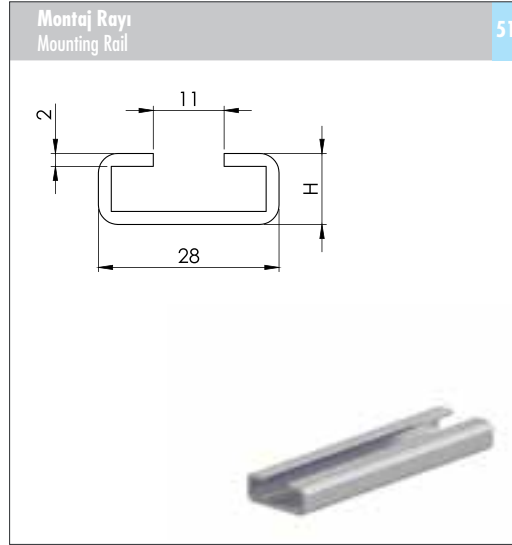
Ölçü Tablosu		Sipariş Kodu
Dimension Table		Order Code
L	ØD1	
34	7	CU00T3I1
52	9	CU00T3I2
65	9	CU00T3I3
79	9	CU00T3I4
102	9	CU00T3I5

Ölçü Tablosu							Sipariş Kodu
Dimension Table							Order Code
L1	L2	L3	S	ØD1	G	n	
196	40	18	3	12	M6 1/4-20 UNC	5	CA05M111
288	58	28	5	14	M8 5/16-18 UNC	5	CA05M112
358	72	35	5	14	M8 5/16-18 UNC	5	CA05M113
445	90	42	5	14	M8 5/16-18 UNC	5	CA05M114
558	112	55	5	14	M8 5/16-18 UNC	5	CA05M115

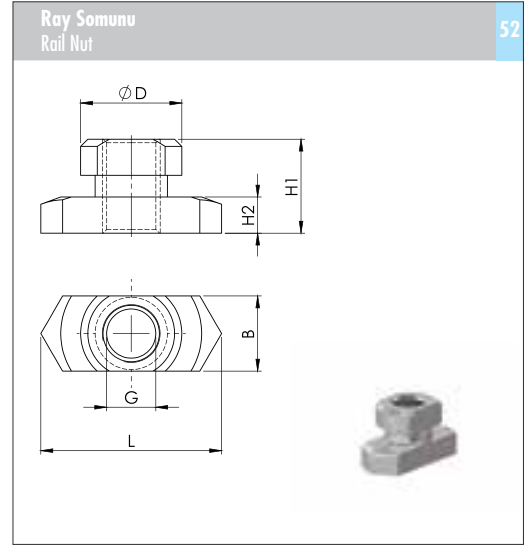
Metal + Kaplama Tipi Metal + Surface Finishing		Vida Tipi Thread Type	
0	Kaplanasız / Uncoated	C	UNC
3	Galvaniz / Galvanized / Fe/Zn 8C Cr3-B	F	UNF
4	CrNi 304 AISI 304	M	Metrik / Metric
6	CrNi 316 AISI 316	W	Whitworth
9	Çinko Nikel / Zinc Nickel Fe/ZnNi		

Farklı malzeme talepleriniz için lütfen  
LMC Makina'ya danışınız.

For different material request please consult LMC  
Makina.



C	R	Y	3	1	1	2	8	1
			Malzeme + Kaplama Tipi Metal + Surface Finishing			Ölçü Size		Boy Length



C	R	S	1	M	3	0	8
			Tip Type	Vida Tipi Thread Type	Malzeme + Kaplama Tipi Metal + Surface Finishing	Vida Ölçüsü Screw - Bol Size	

Grup Group	Dış Çap (ØD) O.D. of Pipe / Tube / Hose mm	Anma Çapı (R) Boru Dış Nominal Bore Pipe inch	Dış Çap (ØD) O.D. of Pipe / Tube / Hose inch
I1	6		
	6.4		1/4
	8		5/16
	9.5		3/8
	10	R 1/8	
I2	12		
	12.7		1/2
	13.5	R 1/4	
	14		
	15		
I3	16		5/8
	17.2	R 3/8	
	18		
	19		3/4
	20		
I4	21.3	R 1/2	
	22		7/8
	23		
	25		
	25.4		1
I5	26.9	R 3/4	
	28		
	30		
	32		1 1/4
	33.7	R 1	
I6	35		
	38		1 1/2
	40		
	42	R 1 1/4	

Ölçü Tablosu Dimension Table		Sipariş Kodu Order Code
H	Boy / Length	
11	1 m	CRY311281
11	2 m	CRY311282
14	1 m	CRY314281
14	2 m	CRY314282
30	1 m	CRY330281
30	2 m	CRY330282

Ölçü Tablosu Dimension Table						Sipariş Kodu Order Code
L	B	H1	H2	ØD1	G	
25.4	10.4	13	5	12	M6 1/4-20 UNC	CRS1M3006 CRS1C3008
25.4	10.4	13	5	14	M8 5/16-18 UNC	CRS1M3008 CRS1C3010



Metal + Kaplama Tipi Metal + Surface Finishing		Vida Tipi Thread Type	
0	Kaplamasız / Uncoated	C	UNC
3	Galvaniz / Galvanized / Fe/Zn 8C Cr3-B	F	UNF
4	CrNi 304 AISI 304	M	Metrik / Metric
6	CrNi 316 AISI 316	W	Whitworth
9	Çinko Nikel / Zinc Nickel Fe/ZnNi		

Farklı malzeme talepleriniz için lütfen  
LMC Makina'ya danışınız.

For different material request please consult LMC  
Makina.

Altıköşe Başlı Cıvata Hexagon Head Bolt		53
DIN 931 / 933 - ISO 4014		

C	C	A	M	3	0	0	6	0	3	5
			Vida Tipi Thread Type				Vida Ölçüsü Screw - Bolt Size			Cıvata Boyu Screw - Bolt Length

Ara Bağlantı Cıvatası Stacking Bolt		54

C	C	B	M	3	0	0	6	0	2	0
			Vida Tipi Thread Type				Vida Ölçüsü Screw - Bolt Size			Cıvata Boyu Screw - Bolt Length

Grup Group	Dış Çap (ØD) O.D. of Pipe / Tube/Hose mm	Anma Çapı (R) Boru Dış Nominal Bore Pipe inch	Dış Çap (ØD) O.D. of Pipe / Tube/Hose inch
I1	6		
	6.4		1/4
	8		5/16
	9.5		3/8
	10	R 1/8	
	12		
I2	12.7		1/2
	13.5	R 1/4	
	14		
	15		
	16		5/8
	17.2	R 3/8	
I3	18		
	19		3/4
	20		
	21.3	R 1/2	
	22		7/8
	23		
I4	25		
	25.4		1
	26.9	R 3/4	
I5	28		
	30		
	32		1 1/4
	33.7	R 1	
	35		
	38		1 1/2
	40		
	42	R 1 1/4	

Ölçü Tablosu Dimension Table	Sipariş Kodu Order Code
GxL	
M6x35 1/4-20 UNC x 1-3/8	CCAM3006035 CCAC3008035
M8x35 5/16-18 UNC x 1-3/8	CCAM3008035 CCAC3010035
M8x45 5/16-18 UNC x 1-3/4	CCAM3008045 CCAC3010045
M8x50 5/16-18 UNC x 2	CCAM3008050 CCAC3010050
M8x60 5/16-18 UNC x 2-1/2	CCAM3008060 CCAC3010060

Ölçü Tablosu Dimension Table	Sipariş Kodu Order Code
L1 L2 SW G	
34 20 11 M6 1/4-20 UNC	CCBM3006020 CCBC3008020
34 20 12 M8 5/16-18 UNC	CCBM3008020 CCBC3010020
44 29 12 M8 5/16-18 UNC	CCBM3008029 CCBC3010029
49 34 12 M8 5/16-18 UNC	CCBM3008034 CCBC3010034
61 46 12 M8 5/16-18 UNC	CCBM3008046 CCBC3010046

Metal + Kaplama Tipi	
Metal + Surface Finishing	
0	Kaplamasız / Uncoated
1	Fosfat / Phosphated / Fe/Znph
3	Galvaniz / Galvanized / Fe/Zn 8C Cr3-B
4	CrNi 304 / AISI 304
6	CrNi 316 / AISI 316
9	Çinko Nikel / Zinc Nickel - Fe/ZnNi

Farklı malzeme talepleriniz için lütfen LMC Makina'ya danışınız.

For different material request please consult LMC Makina.

## Ara Bağlantı Plakası

### Safety Locking Plate

55

C	H	0	0	T	3	I	I
---	---	---	---	---	---	---	---

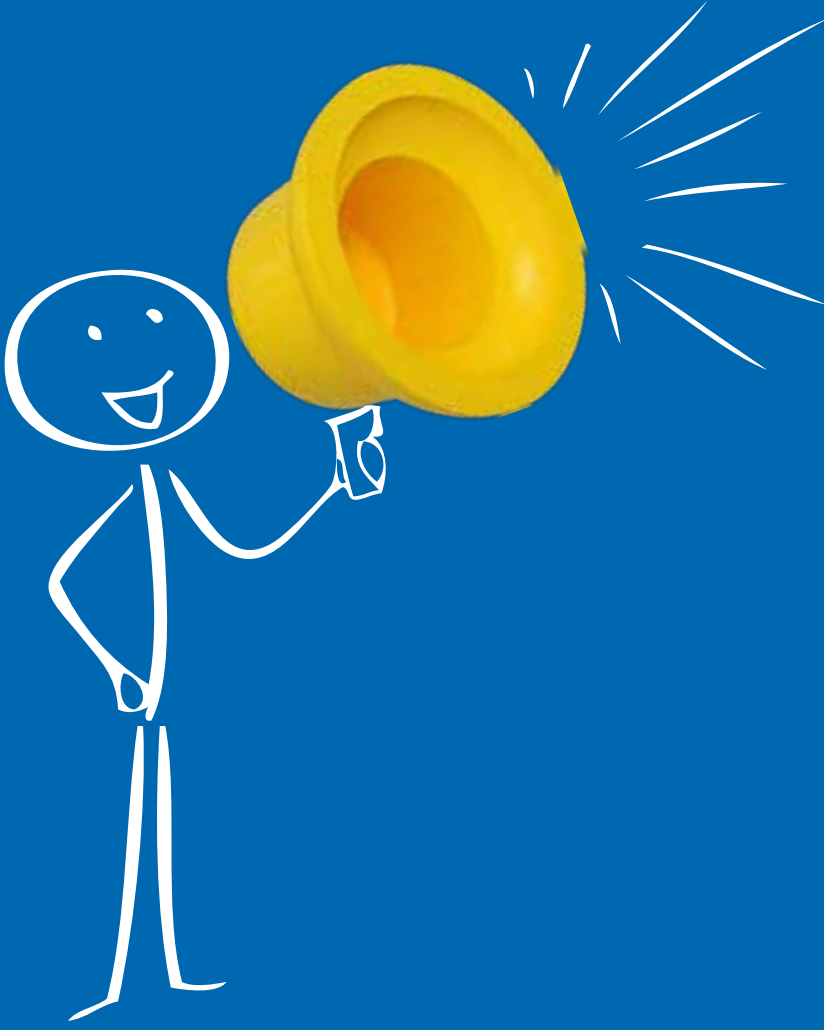
Metal + Kaplama Tipi  
Metal + Surface Finishing

Grup  
Group

Grup	Dış Çap (ØD)	Anma Çapı (R) Boru Dış	Dış Çap (ØD)
Group	O.D. of Pipe / Tube / Hose mm	Nominal Bore Pipe inch	O.D. of Pipe / Tube / Hose inch
I1	6		
	6.4		1/4
	8		5/16
	9.5		3/8
	10	R 1/8	
I2	12		
	12.7		1/2
	13.5	R 1/4	
	14		
	15		
I3	16		5/8
	17.2	R 3/8	
	18		
	19		3/4
	20		
I4	21.3	R 1/2	
	22		7/8
	23		
	25		
	25.4		1
I5	26.9	R 3/4	
	28		
	30		
	32		1 1/4
	33.7	R 1	
I6	35		
	38		1 1/2
	40		
	42	R 1 1/4	

Ölçü Tablosu	Sipariş Kodu
Dimension Table	Order Code
SW	
11.1	CH00T311
12.1	
12.1	CH00T312
12.1	
12.1	





## TAPAKAPAK.COM ADRESİNDE BİNLERCE ÇEŞİT TAPA VE KAPAK ÜRÜNLERİ SİZLERİ BEKLİYOR.

Plastik Tapa ve Kapakları,

- Ürünlerinizin iç ve dış vidalarını darbelere karşı korumak,
- Boruların, silindirlere valflerin ve tüm devre elemanlarının hassas bölgelerine toz ve yabancı cisimlerin girmesini önlemek,
- Endüstriyel pek çok uygulamada ihtiyacınızı karşılamak için kullanabilirsiniz.



\* Yüzlerce çeşit tapa / kapak için web sitemizi ziyaret ediniz.

\* Visit our website for different types of caps & plugs.

Online Alışveriş / e-shopping



Katalog / Catalog



www.tapakapak.com

LMC Makina Sanayi A.Ş. şirketinin Tapa ve Kapak resmi satış sitesidir.





Dijital katalođumuza buradan ulaşabilirsiniz.  
You can download our dijital catalogue from here.

**LMC Makina Sanayi ve Ticaret A.Ş.**

Ankara Cad. No: 3/1 35743 Bağyurdu - Kemalpaşa/Izmir/TURKEY

Phone: +90 232 880 70 50 - Fax: +90 232 880 70 58

**lmc@lcmakina.com.tr**

**LMC Europe BV.**

PO Box 30223, 3001 DE Rotterdam Netherlands

Phone: +31 10 261 99 26

**lmc@lmceurope.nl**

**www.lcmakina.com.tr - www.lmceurope.nl**