

## Servo-type Acceleration Sensor

LT – SA-A-XX



### Use

Building, Structure status monitoring  
Vibration monitoring in construction site  
Vibration monitoring of bridge or tunnel

### Characteristic

- Servo-type Acceleration Sensor
- 0 ~ 100 Hz frequency characteristics
- ± 1, 2G (Peak) measurement
- 1 ~ 2 axis measurement
- ±15 DCV

### Specifications

#### Dynamics

Frequency range : 0 ~ 100 Hz(± 3dB)  
Measurement range : ±2.0 G(± 5%)  
(0.1G, 0.5G, 1G, 2G, 4G possible)  
Sensitivity : 2,500 mV/G  
Dynamic Range : 120 dB  
Damping : 70% of critical

#### Electrical

Output Volt. : ± 2.5V, ± 5.0V, ± 10V  
Input : ±15 DC V, 10mA  
Initial time : 3 Seconds Max  
Useful Distance : Max 20m

#### Mechanical

Case material : AL  
Case size : 80 x 75 x 55 mm  
Weight : 0.5Kg

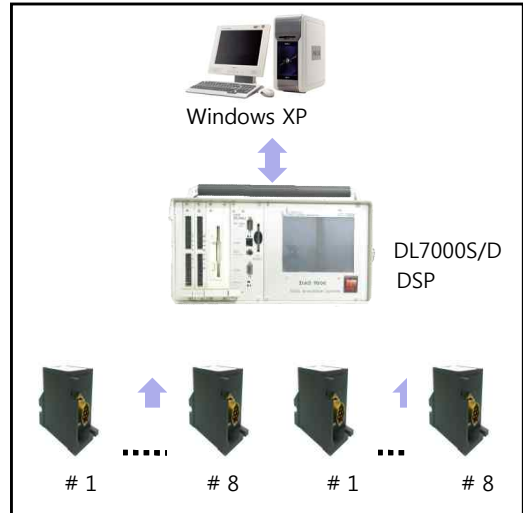
#### Environmental

Operating Temperature : -20 ~ +80 °C  
Storage Temperature : -40 ~ +100 °C

### Environment

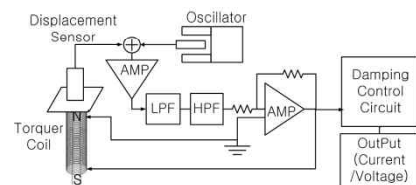
- Possible Area for Sensor care
- Fixed to base
- Impossible Area for Sensor care
- Fixed to base
  - Mandatory use of sensor cover

### System Organisation

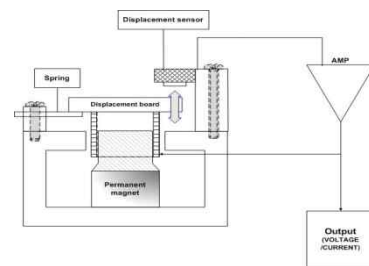


### System Summary

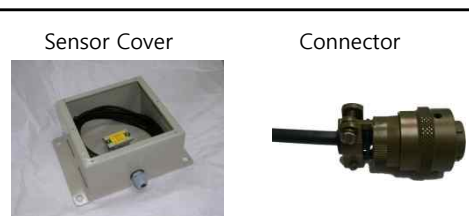
#### Block Diagram



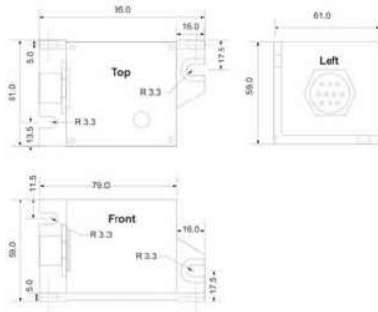
#### Principle & Structure



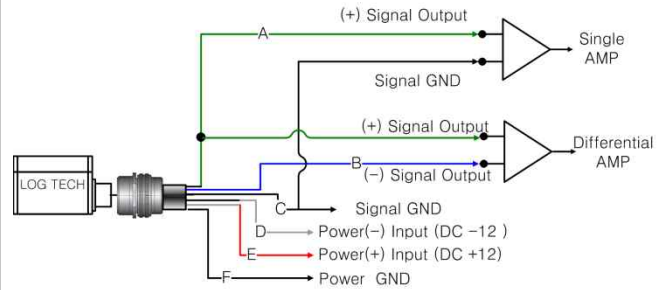
### Other Product



### External form



### How to use



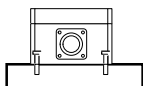
### Connector



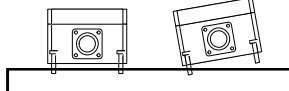
⚠ Cable is not supply

### How to install

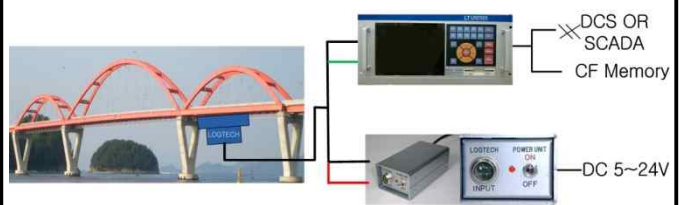
(O) Correct install



(X) Incorrect install



### Example



### How to select

