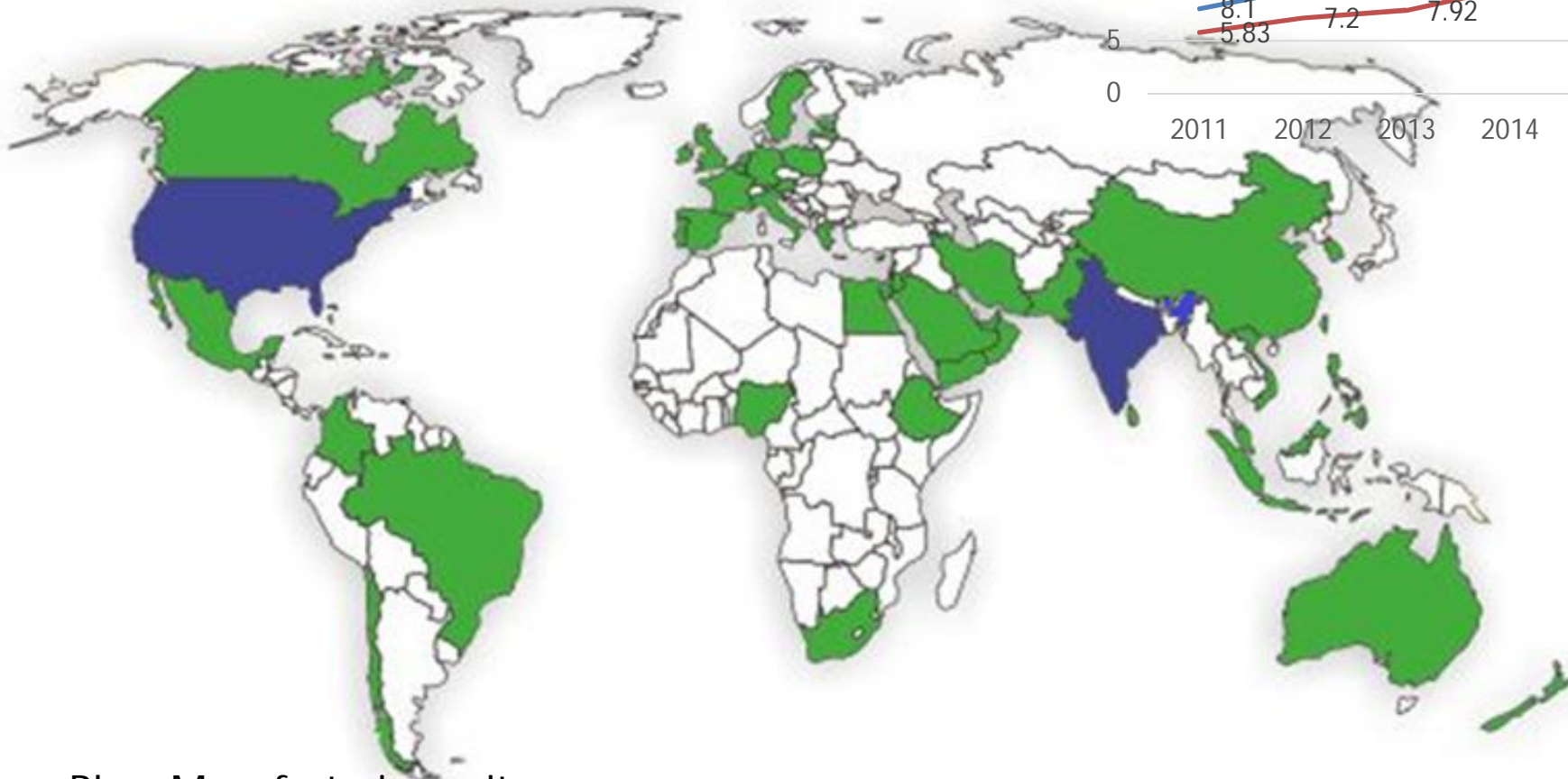
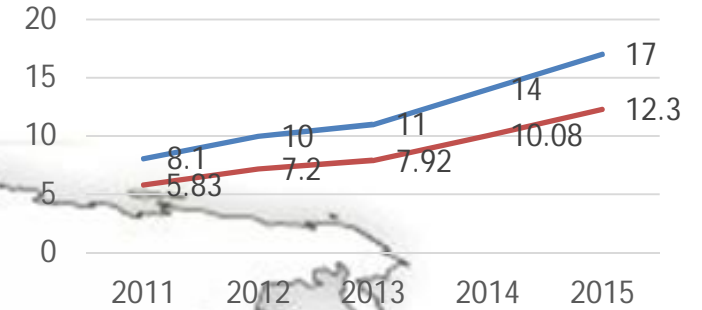




Supplying to 55 countries

Export business & Total Business



Blue- Manufacturing units  
Green- Supply countries

## Vision

Creating wealth in form of  
cutting edge technology,  
patron customers,  
sustainable profit,  
passionate team and  
healthy environment

## Mission

To create a world class organization, valued by customers

## Goal

Be industry leader in customer value

## Values

Honesty  
Respect  
Transparency  
Creativity

# Milestones



1996-2000

Systems

ISO 9001

Export business



2001-2005

Established EOU

USA Business

Core  
manufacturing

R&D facility



2006-2010

Automation in  
resin process

ISO14001

GIS products

CRC business

Rogowski coils

MV Outdoor

Six Sigma

Global compact



2011-2015

OHSAS18000

Sustainability audits

Methods Engineering

Planning software

MV Facility

Amtran

## GROUP BUSINESS

### Narayan Powertech U-I

- Instrument transformers MV Indoor up to 36kV
- Instrument transformers MV Outdoor up to 36kV
- Instrument transformers LV and Bushing type
- Coils
- Chokes
- Rogowski with Integrator
- Fault Passage Indicator

Land:- 100,000 Sq Fts  
Constructed:- 45,000 Sq Fts

### Narayan Powertech U-II

- Instrument transformers MV Indoor from 6.6 to 36kV
- Instrument transformers MV Outdoor from 6.6 to 36kV
- CRGO Cores
- Split cores

Land:- 150,000 Sq Fts  
Constructed:- 45,000 Sq Fts

## GROUP BUSINESS

### Narayan Epoxy Components

- Insulators up to 36kV
- VDIs with indication unit up to 36kV
- Spouts up to 36 kV
- Hollow bushing up to 36kV
- Bus bar supports up to 36 kV

Land:- 10,000 Sq Fts  
Constructed:- 3,500 Sq Fts

### Narayan MV Transformers

- Instrument transformers oil insulated up to 36kV
- Metering units up to 36kV
- Oil insulated Control Transformers up to 36kV
- RVTs up to 36kV

Land:- 40,000 Sq Fts  
Constructed:- 5,000 Sq Fts

# GROUP BUSINESS

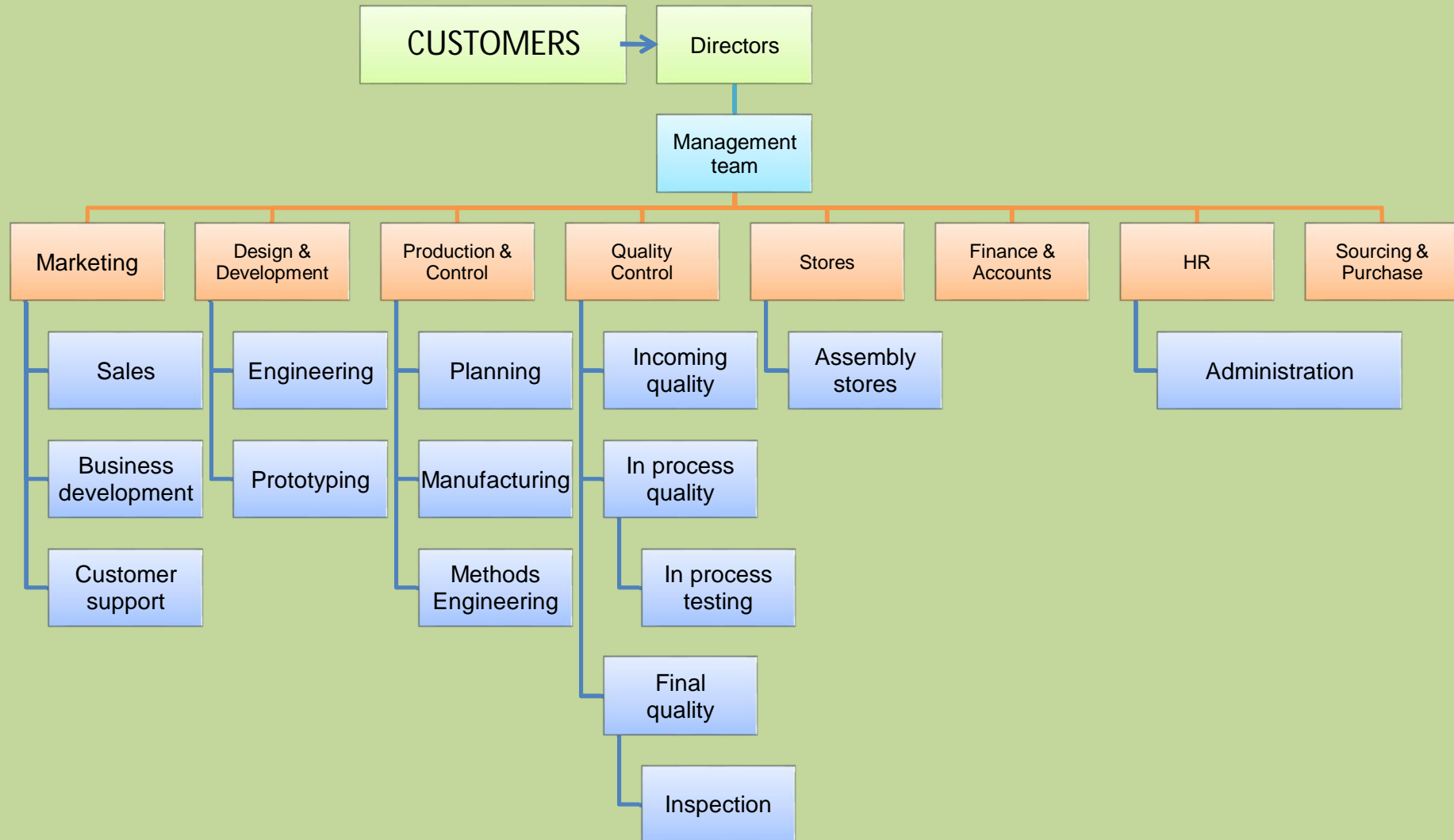
## Amtran Magnetics

- Instrument transformers LV Indoor up to 1.1kV
- Toroidal Power supply Transformers

Land:- 100,000 Sq Fts

Constructed:- 45,000 Sq Fts

# Organization



# Systems

- ❖ Process approach
- ❖ Six Sigma techniques and poka-yoke in the system
- ❖ working towards assemblies based on Lean manufacturing concept
- ❖ Integrated ERP system
  
- ❖ Manufacturing planning software under implementation
  
- ❖ Awarded by IEEMA for Best commitment to quality under ISQA consistently for 3 years



# Certifications

## Systems

- ❖ ISO 9001-2008
- ❖ ISO 14001-2007
- ❖ OHSAS 18001-2007

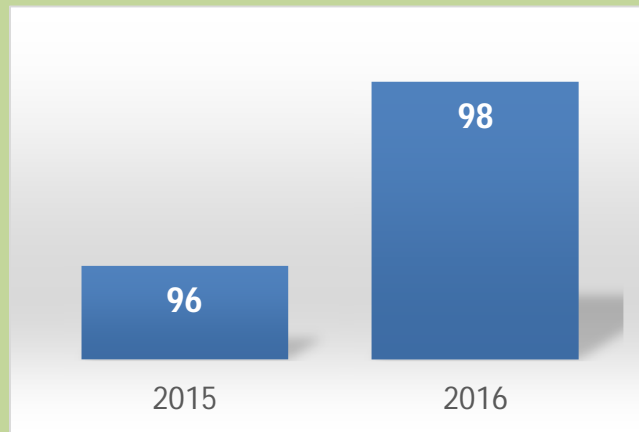
## Products

- ❖ UL approved family
- ❖ CE marked family
- ❖ GOST- R registered
- ❖ CSA marked family
- ❖ RoHS/REACH compliant

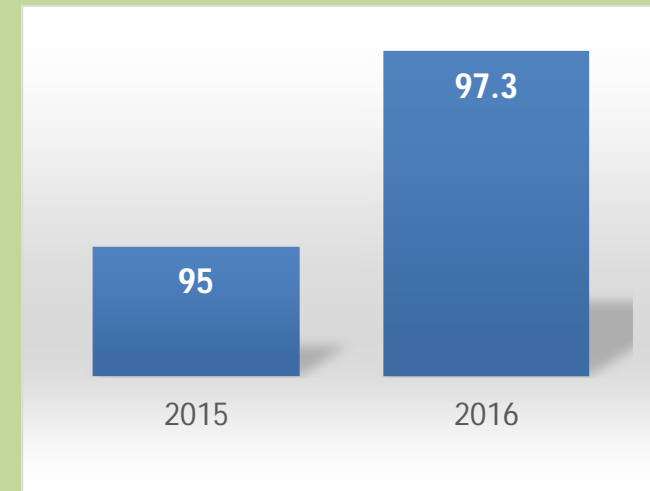
## Sustainability

Registered with UN GLOBAL COMPACT  
Audited by Intertek on ISO 26000  
Online audit on Ecovadis

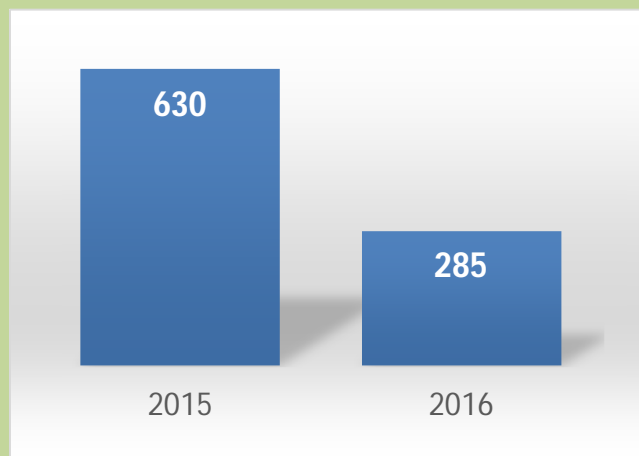
## Group Quality & Delivery statistics YOY



First pass yield percentage



On time delivery percentage



Customer complaint PPM

# Engineering infrastructure



Raw material  
specification



FMEA, PPEP,  
QFD

Design  
validation

Product  
validation

Prototyping  
infrastructure

Product  
qualification



# Reliability laboratory



**COATING  
MEASUREMENT**



**A BRASION RESISTANCE  
TESTER**



**CUT THROUGH  
TESTER**



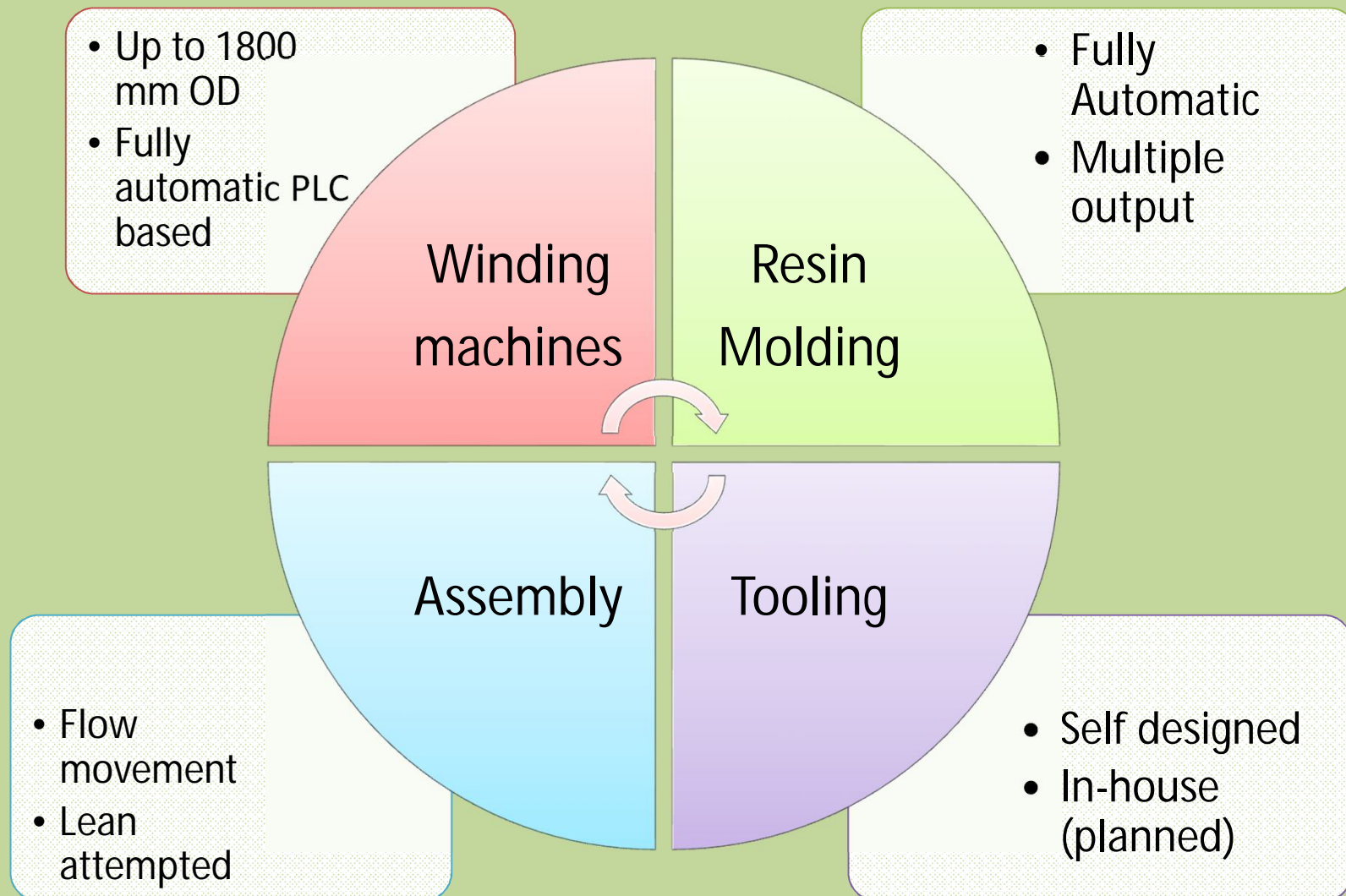
**3 KV PIN HOLE  
TESTER**



**CONDUCTIVITY METER**



# Manufacturing facility





# Manufacturing facility



Winding machines



Rogowski winding

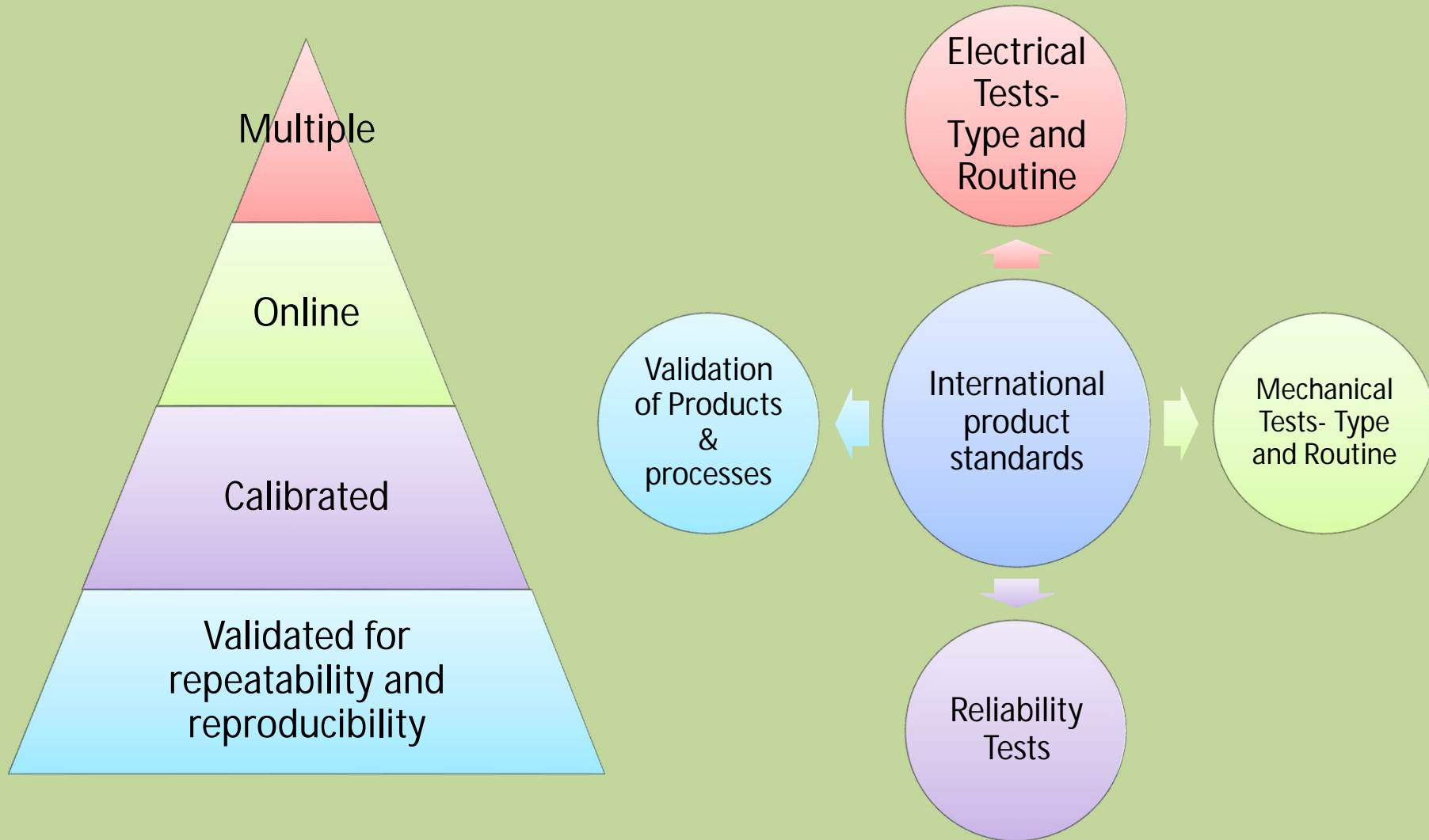


Assembly line



Automatic MV Casting

# Test facility installed



# Test facility installed



Impulse facility up to 300 kVp



Partial discharge Lab



High voltage Lab



Voltech Computerized set up



Omicron test set up



Rotating table X-Ray



# Test facility installed

- Omicron test set up
- Vanguard test set up
- Ten, Microprocessor based test bridges to test CTs and VTs with facility of Computer interface
- Partial discharge test facilities
- Impulse laboratory up to 300 kVp
- HV test facility for test laboratories up to 110 kV
- Test facilities at 60 Hz

## Test facility installed

- Automatic Relay CT analyzer
- Four channel digital storage oscilloscope
- Seven, Test benches calibrated to perform V-I characteristics test
- Calibrated Standard CTs and VTs
- High current source of capacity up to 20000 Amps momentary

# Products

## Electrical Up to 36kV

Current  
Transformers

Potential  
Transformers

Metal Clad Voltage  
transformers

Resin cast components

Coils & Reactors

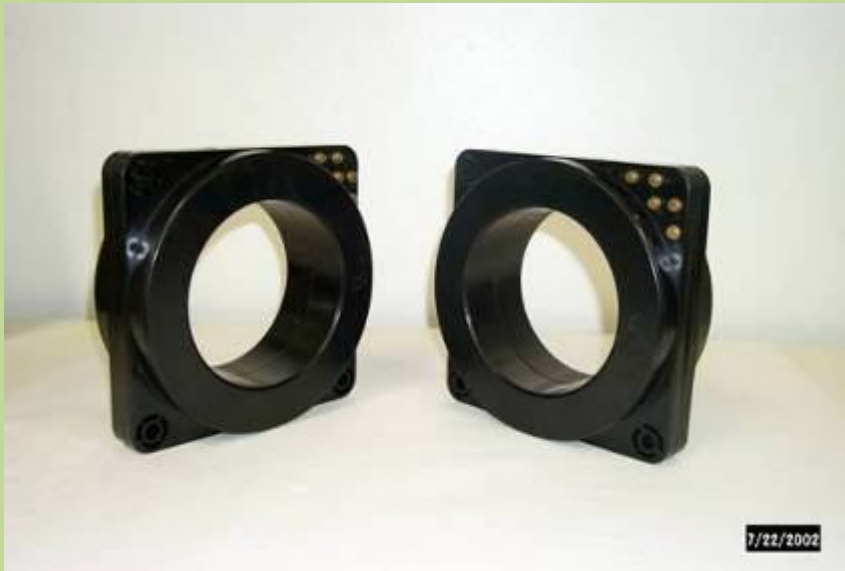
## Electronics

Rogowski and Integrators

Fault passage indicators

Voltage detection system

# LV Current Transformers- Plastic cased



# LV CTs and VTs- Resin casted

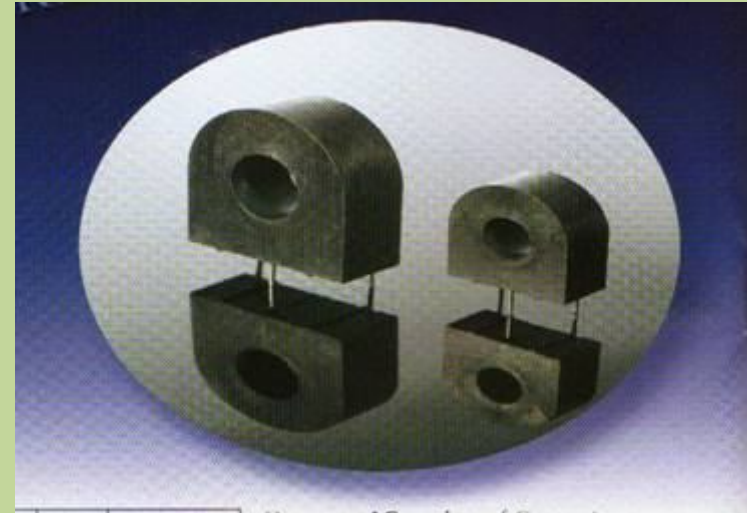


# LV CTs and VTs Taped and split core





# Miniature sensors, coils and Inductors



# Toroidal power supply transformers





# Rogowski sensors



# Bushing Current Transformers



# CTs for HV GIS



# Metal Clad VTs





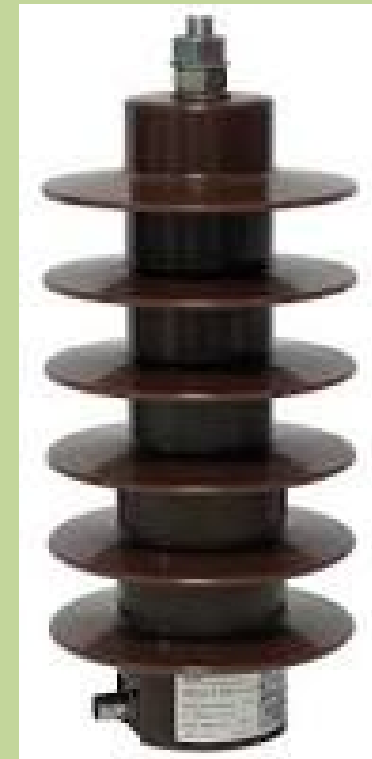
# MV Indoor CTs and VTs



# MV CTs and VTs-Outdoor-resin casted



# Outdoor Sensors



# CTs and VTs for Busduct application





# Cast resin components



# FPI and VDIS



*narayan  
powertech pvt. ltd.*



## Customers



TAMCO



Rockwell  
Automation

SIEMENS

ALSTOM



Schneider  
Electric

EATON



AuCom



TOSHIBA

KOHLER