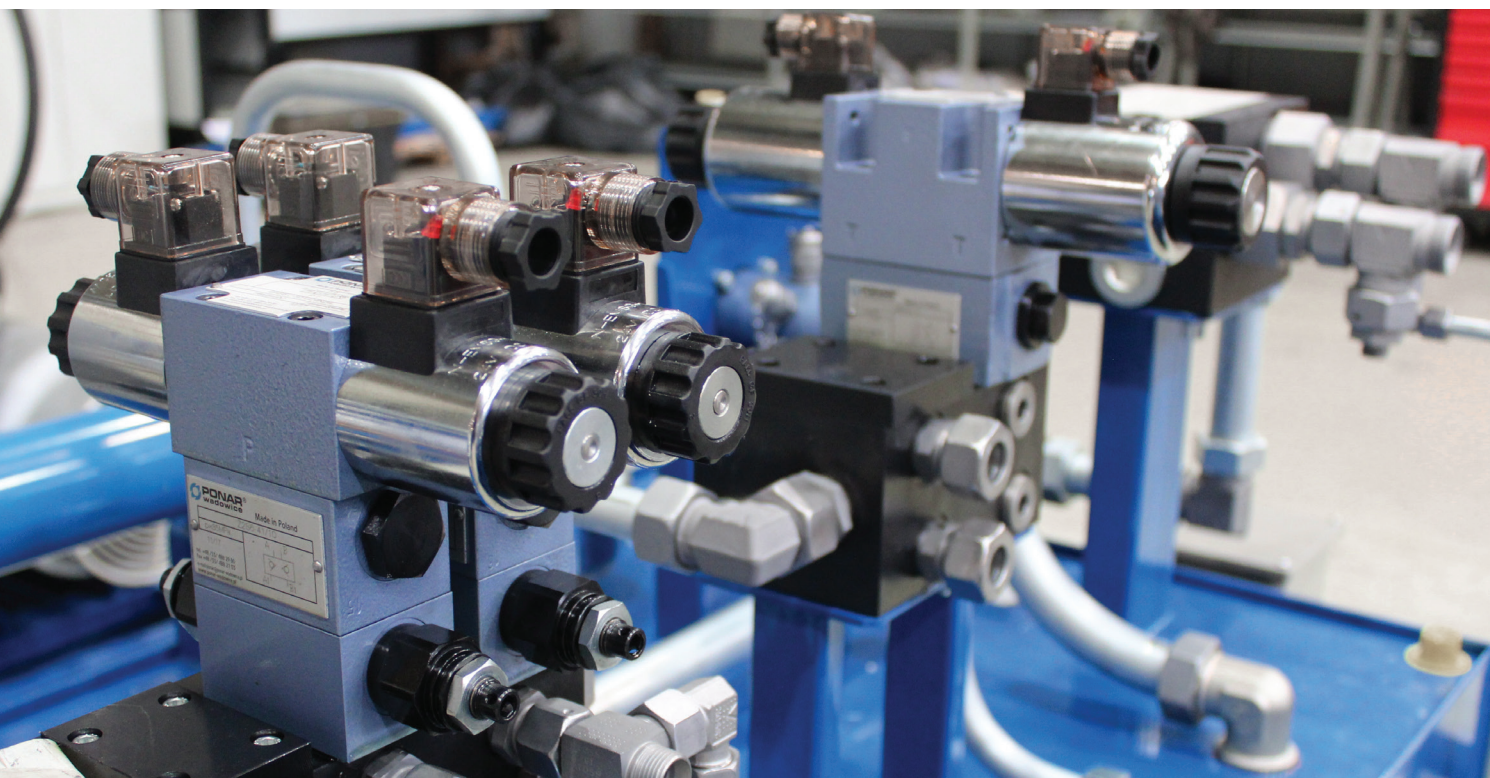


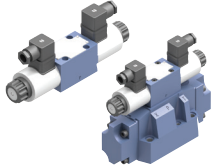
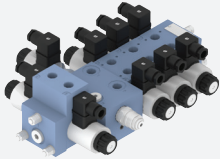
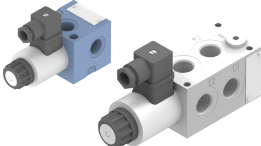
DIRECTIONAL CONTROL VALVES

We offer a wide selection of valves intended for use in many branches of industry. Innovative construction design solutions, various control versions, many different hydraulic diagrams and broad range of working parameters are the major advantages of our products.

The valves are also available in special versions intended for use in low temperatures. Moreover, we offer subplates for all types of valves and on Customer's request we take into consideration any additional requirements. The valves can also be equipped with spool position sensors and manual control levers.




DIRECTIONAL CONTROL VALVES

group	NS	P_{max} [MPa]	Q_{max} [dm ³ /min]	type
 <p>subplate (CETOP), on-off valves</p>	5-22	20-35	16-450	WE, WMM, WMR, WMD, WH, WHG6, WHP6, URJP10, UREP10, WEH
 <p>sectional valves</p>	6, 10	25-35	50-80	6URRE6, 4/3UREM6, 6/2UREM6, 6/2URMM6, 6/2UREM10
 <p>threaded valves</p>	6-10	30-35	50-100	6UREE, 6UREE_ZK, 6UEE10_ZP, 3URPEE6, 3/2URER, 3URRE13

DIRECTIONAL CONTROL SEATED VALVES

group	NS	P_{max} [MPa]	Q_{max} [dm ³ /min]	type
 <p>directional control seated valves</p>	6	25-35	25-30	UREB6, UREZ6

MONOBLOCK AND SECTIONAL VALVES

group	NS	P_{max} [MPa]	Q_{max} [dm ³ /min]	type
 <p>monoblock and sectional valves</p>	-	250-315	45-160	GMS, AMI