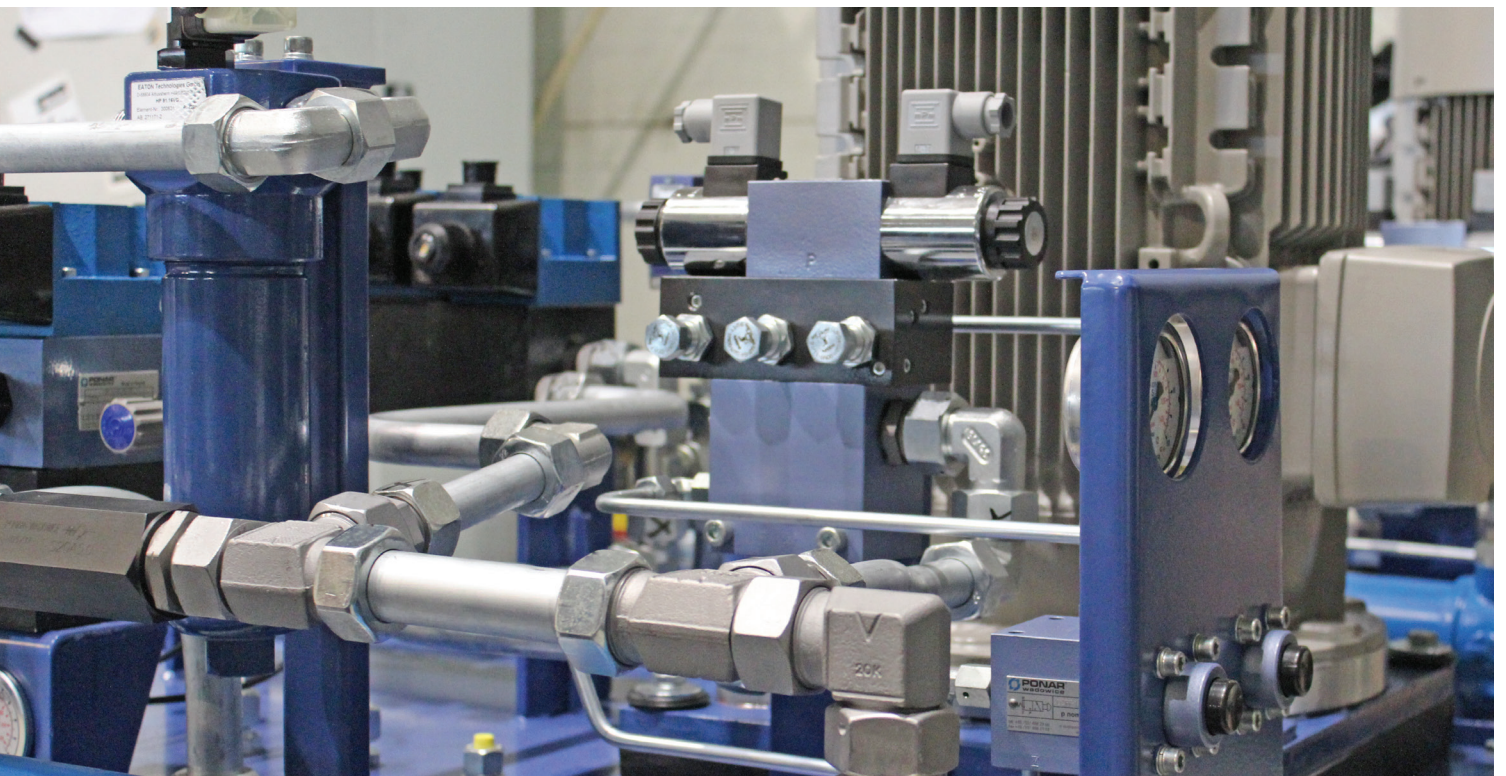
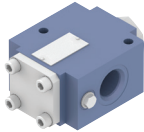
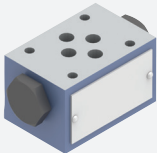
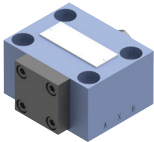
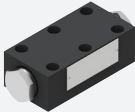


CHECK/CUT-OFF VALVES


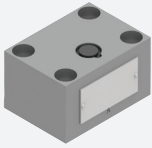
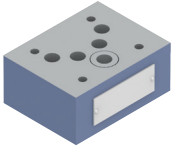
We offer pilot- and direct operated check valves and ball valves. These products can be intended for cartridge mounting, threaded connection, subplate mounting and sandwich mounting. They perform a wide range of working parameters in many different sizes.




PILOT-OPERATED CHECK VALVES

	group	NS	P _{max} [MPa]	Q _{max} [dm ³ /min]	type
	threaded valves	6-16	31,5-35	40-200	UZSG16, 2UZSG16, 2UZSG12, 2UZSBR6
	sandwich type valves	6-22	35	60-300	Z2S
	subplate valves	6-32	31,5	20-360	UZSB
	subplate/threaded valves	6	31,5	40	2UZSBE6

CHECK VALVES

	group	NS	P_{max} [MPa]	Q_{max} [dm ³ /min]	type
	threaded valves	6-30	35	260	S, UZZR
	subplate valves	6-32	31,5	20-400	UZZB
	sandwich type valves	6,10	35	60-120	WZZC

BALL VALVES

	group	NS	P_{max} [MPa]	Q_{max} [dm ³ /min]	type
	ball valves	4-40	60-65	-	BK, 3BK, 4BK

OTHER TYPES

	group	NS	P_{max} [MPa]	Q_{max} [dm ³ /min]	type
	other types	01-8	29-35	40-210	UZSZ8, VUBA, 3UZZE6