



**RO**TALIGN® *touch*

# PRECISION MEETS CONNECTIVITY

The only cloud-enabled touchscreen laser shaft alignment system with integrated mobile connectivity.

THE MAKERS OF  
**OPTALIGN**®  
AND  
**RO**TALIGN®



## CONNECTED, INTUITIVE, DURABLE

ROTALIGN® touch is the only cloud-enabled touchscreen laser shaft alignment system with a range of built-in connectivity features.

It's built for rough industrial environments and comes packed with usability features, such as voice recognition for hands-free operation, a completely redesigned 3D user interface for easy navigation, and a fast processor to ensure accurate and timely measurements.

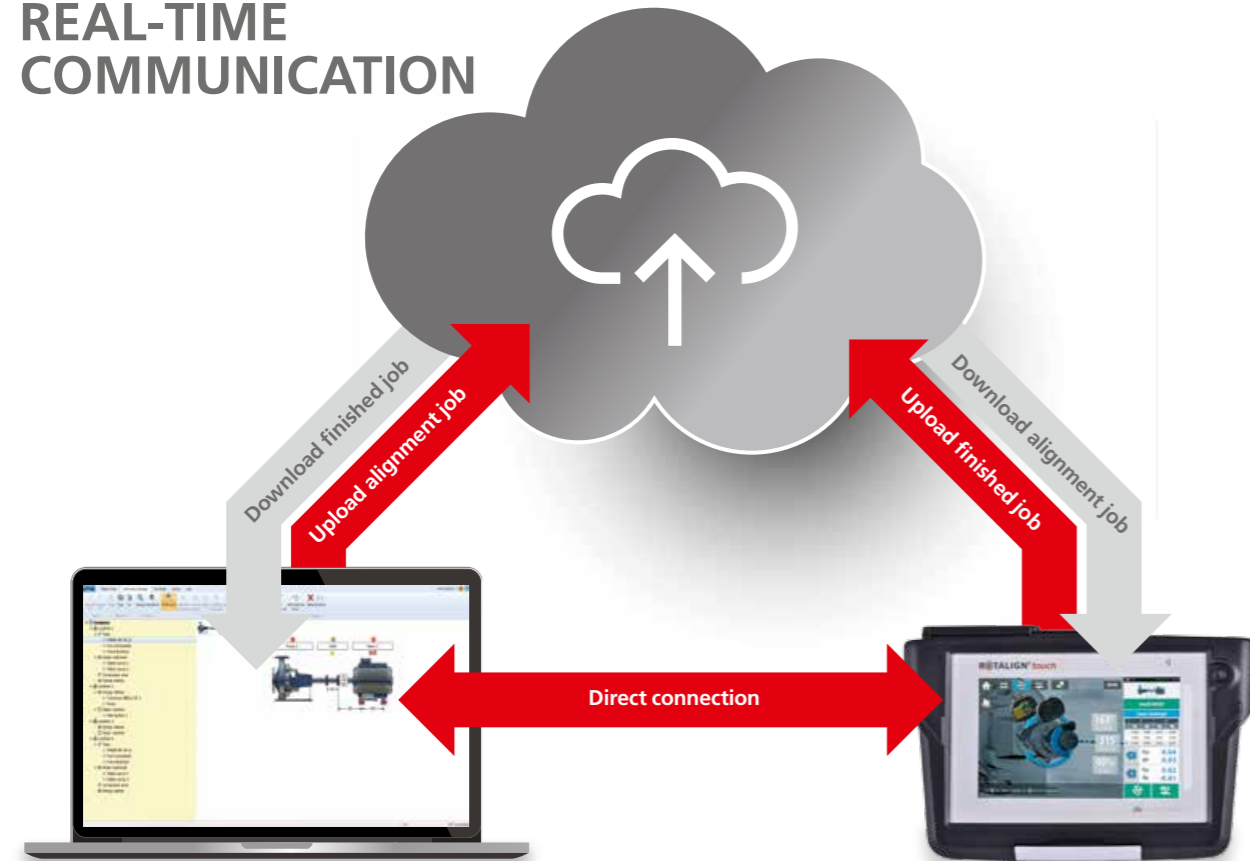
With ROTALIGN® touch, alignment is fully integrated into your asset management. Mobile connectivity is built into the design – connect directly to the cloud or Alignment Reliability Center 4.0 using Wi-Fi and Bluetooth® and read RFID tags straight from the device.

## WHY ROTALIGN® TOUCH?

Misalignment accounts for over 50% of machine downtime. ROTALIGN® touch is the only alignment system that allows you to measure and track your alignment trends, significantly increasing the reliability of your assets, saving you production time and operating costs.

Use the ROTALIGN® touch's mobile connectivity features to keep an accurate history of each machine's condition and recall previous measurements in an instant. Transfer alignment jobs and results via the cloud and use the built-in RFID reader and camera to streamline asset identification.

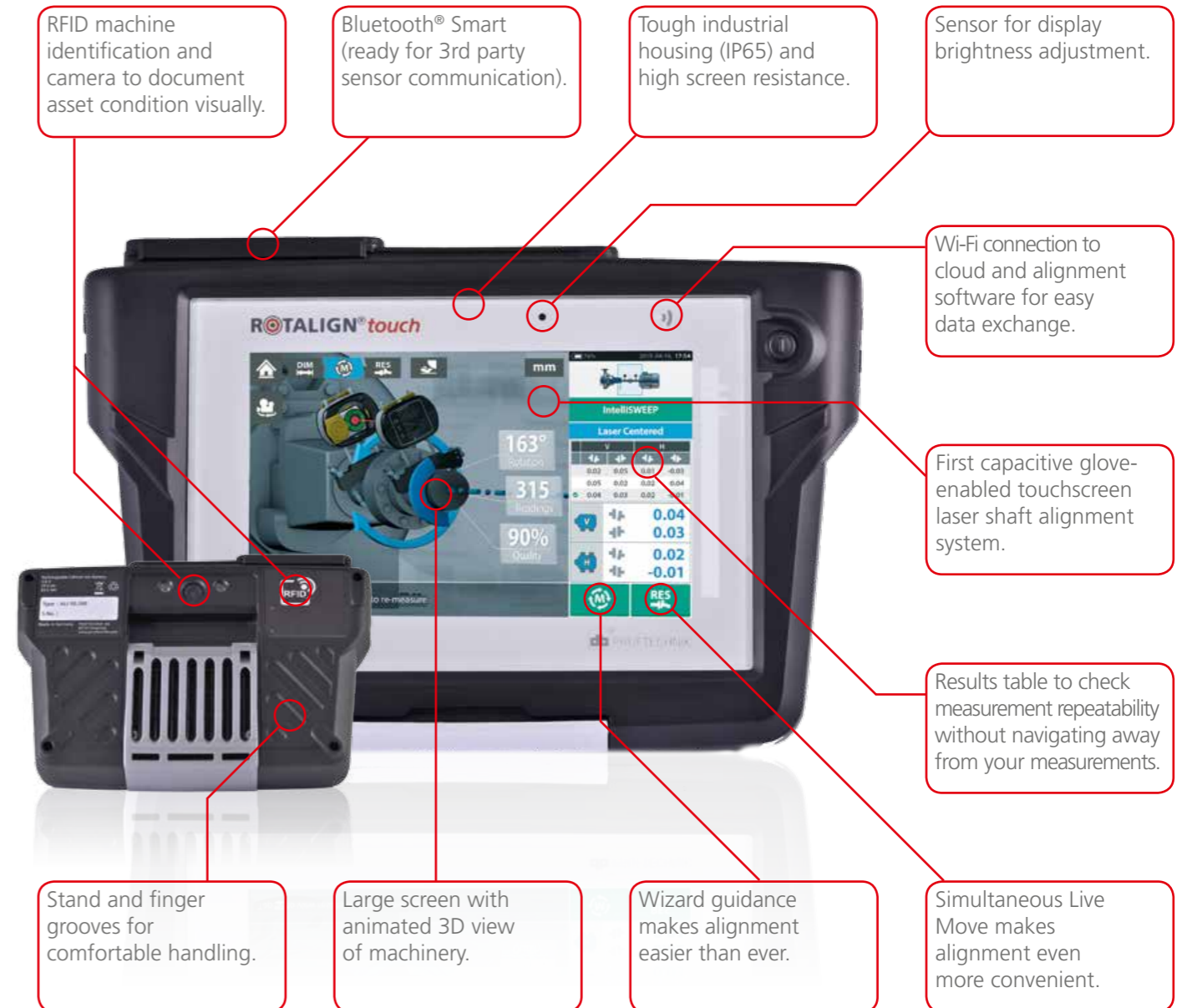
## REAL-TIME COMMUNICATION



## CHANGE THE WAY YOU ALIGN

Alignment is now as easy as using your smartphone. Align faster, more accurately and with less chance for errors. Plus, voice recognition enables operation in situations where you need both hands free.

The 3D interface with multi-touch technology is visual, intuitive, and simpler than ever before. With wizard-like guidance you can complete an entire job by touching just one button, or go back and forth between screens to review the previous sections of your job.



## sensALIGN® ON-BOARD INTELLIGENCE

### intelliSWEEP® sensor technology

Continuous measurement and real-time quality by intelliSWEEP® HD measurement mode for more precise, accurate and repeatable results. This, combined with simultaneous Live Move, makes alignment even more convenient.

The intelligent intelliSWEEP® HD measurement mode actively supports the user by detecting error influences such as coupling play, rotational angle or vibration, and automatically eliminates them. As shafts rotate, a large number of measurement data is recorded automatically and continuously. This is much more accurate compared to other measurement methods.

- 7-axis measurement system.
- On-board intelligence automatically compensates for negative influences.
- Built-in vibration measurement.
- Environmental vibration monitoring.
- Built-in precision inclinometer through MEMS.
- Intelligent data communication through the laser beam.
- Integrated class-one Bluetooth®.
- Rechargeable battery with latest Lithium Polymer (LiPo) technology and intelligent power management.

