



A line of ball valves and ideas





Progress is our tradition
– for more than 100 years.

The medium-sized family business Rötelsmann has committed itself to its location in Werdohl for more than 100 years, but as a company we have moved on constantly. So from the beginning we kept pace with new developments. A pacemaker in the field of control, shut-off and instrumentation technology we have become through our intense comprehension for technique and through our pleasure in learning. This openness for development characterizes the entire staff of Rötelsmann GmbH.

Progress for Rötelsmann GmbH especially means to keep in mind the wishes of the customers as finally they determine the success of the company. For this reason we take precision seriously and pay attention to proper service. Our quality management guarantees highest quality on a persistent level as well as in products as in services.

Progressive

Precise

Functional

Premium

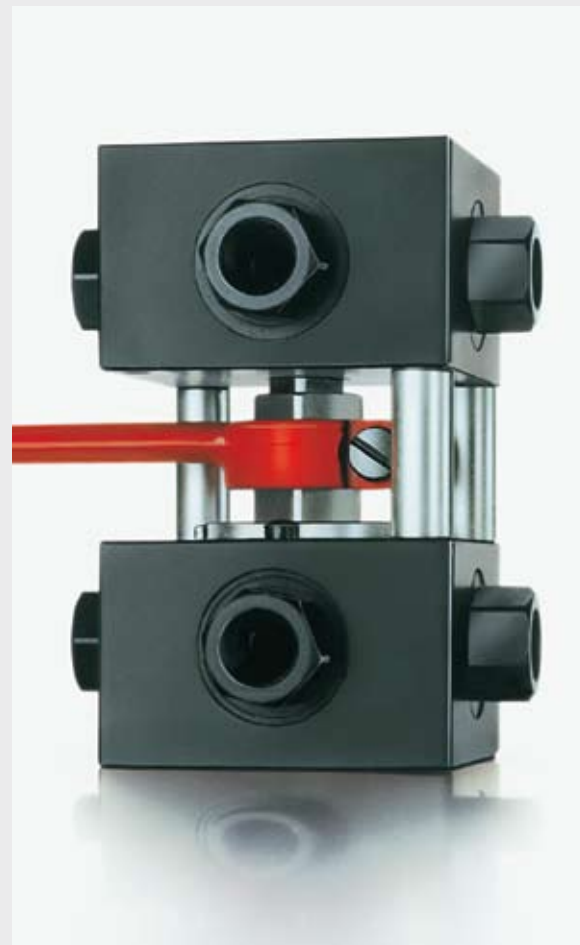
Innovative

Versatile

Reliable

⇒ Ball valves

High performant and reliable technique is the result of decades of experience. Whether 2-way- or multi-way ball valves, ball valve function systems, ball valves for instrumentation or valves attachments or accessories – the intensive handling of materials and our understanding for the sometimes complex working conditions are the best guarantees that our products work reliably and have a long lifetime.



High performant and reliable technique

2-way ball valves

Our 2-way ball valves are manufactured from various materials like stainless steel, steel or aluminum. They can be used up to 1500 bar and are available in numerous variations for different applications. On demand they can be automatized with pneumatic, electric or hydraulic actuators and are available with optical indicators, position switches, proximity switches and locking devices. To suit everything, we produce all current threaded, flanged and staple lock connectors as well as ball valves for manifold mounting and for manifold insertion as cartridge type.



Multi-way ball valves

Our multi-way ball valves are produced in nominal diameters from 4 to 65. They are manufactured from high grade stainless steel, steel or aluminum and engineered up to 500 bar. For the precise automatic control we equip our multi-way ball valves on demand with pneumatic, electric or hydraulic actuators as well as optical indicators, position switches, proximity switches and locking devices. The ball valves are produced with a floating ball or trunnion ball and are also available for manifold mounting.



Precision is our standard
– for safe and reliable products.

Progressive

Precise

Functional

Premium

Innovative

Versatile

Reliable

⇒ Special solutions

We plan for our customers, therefore our ball valves are systematically developed products. To react flexibly to different demands the Rötelsmann line offers a great variety of attachments, valves and accessories which comply reasonably with the ball valve range. Extensive special production is dispensable, long assembly times are not necessary.

Ball valve combinations



Shut-off blocks, sandwich plates, accumulator safety blocks – Rötelsmann offers especially for individual applications innovative solutions. They simplify handling, maintenance and the assembly of plant and machinery and raise noticeably their safety.

Solutions with system

Ball valves for instrumentation

Because of their high precision our ball valves are very suitable for applications in instrumentation technology. Our vast range includes 2-way ball valves with test line connections in many different versions, multi-way ball valves with floating ball for pressure measuring and test devices as well as directional ball valves for differential pressure transducers. High tightness, modular design, high grade materials and simple handling give you the flexibility and reliability that you can expect from us.



Attachments and accessories

With mechanically and technically sophisticated attachments and accessories you retrofit your installations quickly to new tasks. The product range goes from mechanical attachments like position switches, handles and locking devices to technically sophisticated sensors, pneumatic, hydraulic or electric actuators.



Efficiency is our objective
– for comfortable and practical applications.

Progressive

Precise

Functional

Premium

Innovative

Versatile

Reliable



In the fast moving time nowadays of cheap mass production the real value of a product does not show in the price but only in its consistency and the additional service that a company offers. It is our firm ambition that we improve continuously the quality of our products and offer our customers services which do not leave wishes unfulfilled.

The management and the staff have committed to the fact that everybody is responsible for the quality of his actions himself because finally the customer pays the salary and not accounting.

Quality cannot be tested into products, it is produced during manufacturing. For us all it is therefore much more important to prevent mistakes in advance. Costs can only be reduced by prevention of mistakes, not by the search for mistakes. We assure this through continuous education, qualified employees and reliable suppliers as well as through a quality management that fulfills the requirements of the standard DIN EN 9001:2008.

Quality is our ultimate principle
– for customers that always like to come back to us.



To recognize the potential for development and to use it is one of the virtues of our enterprise. We use existing know-how and work with high-performance equipment to develop suitable high-class and economic products and services from good ideas. Beginning from design over production to quality testing, logistics and sales – up-to-date infrastructure reduces the effort and finally the costs. Because of that we are able to react fast, effectively and flexibly on new requirements of customers and industries.

Permanent innovation is important to us
– for perfect products and reliable service.

⇒ Applications



Reliability is our strength
— for trouble-free operation.

From experience we have learnt to be responsible. Therefore we offer products which meet the complex requirements of modern installations and vehicles in all areas. Rötelmann ball valves for shut-off, control and instrumentation technology are safe, reliable and durable in operation when gases or fluid media shall be transported, mixed or measured.

They are used in hydraulic controls of machinery and installation, in ship building as well as in mobile hydraulics and in wind turbines. In fire extinguishing installations, steel mills, earth moving machines, chemical plants, refineries and in process plants they control the flow of gaseous and fluid media. Also on oil rigs, in pipelines or in printing machines our ball valves are applied.

Progressive

Precise

Functional

Premium

Innovative

Versatile

Reliable



We are well-prepared
– for a promising future.

Our products are the result of longstanding expertise and advanced technology in all business areas. For this, we regularly invest in new production lines and are always open to ideas that improve our products and our service. The most important thing, however, are well-trained and qualified people who implement their interest in technology in their daily work for our customers.

We therefore invest regularly in training and keep the knowledge through further education and training up to date. Thanks to the commitment and deep understanding of our product, Rötelsmann GmbH develops steadily and the quality and reliability of Rötelsmann valves are perfected in the interest of their customers more and more.

Progressive

Precise

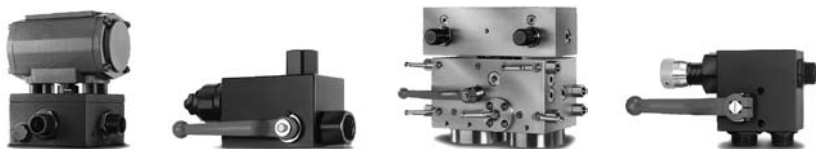
Functional

Premium

Innovative

Versatile

Reliable



Rötelsmann GmbH

In der Lacke 10 · 58791 Werdohl

P.O. Box 15 60 · 58775 Werdohl

Phone : +49 (0)23 92/91 91-0

Fax : +49 (0)23 92/91 91 -14

Email : info@roetelmann.de

URL : www.roetelmann.de