

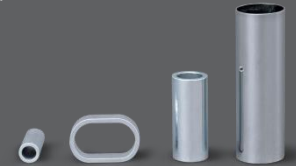
YOUR LEADING SPECIALIST FOR TUBE PRODUCTS AND PROFILES

FACTS

Incorporated:	1983	
Office:	Schalksmuehle - DE	
Employees:	100	
Customers:	1.500	
Sales 2016:	approx. € 12,5 million	
Parts p.a.:	approx. 250.000.000 pcs.	
Export:	worldwide	
Certificates:	1996: ISO 9001, 2005: Introduction of ISO TS 16949 & ISO 14001	

CORE COMPETENCE

Our core competences are the precise cutting and deburring of bars. Especially, the processing of short parts are one of our strengths. We process mainly tubes on state-of-the-art machines, as well as profiles and solid materials.



DIMENSIONS

Outside diameters: 1 mm – 100 mm (0,039 – 3,937 Inch)
 Lengths: 2 mm – 2500 mm (0,079 – 98,425 Inch)
 Wall thicknesses: 0,2 mm (0,008 Inch) – solid material
 Tolerances: from +/- 0,05 mm (0,002 Inch)

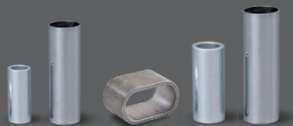
MATERIAL GRADES

Steel
 Stainless Steel
 Brass
 Copper
 Aluminium

SHAPES

Circular
 Oval
 Square
 Semicircular
 Profiles

TUBE PRODUCTS – QUALITY MADE IN GERMANY



Spacer sleeves
 Distance tubes
 Axlebox casing
 Axle tubes
 Intake tubes
 Bushings
 Crimp sleeves
 Distance sleeves
 Distance tubes

Sleeves
 Compression reducers
 Headrest tubes
 Bearing bushes
 Bearing sleeves
 Bearing tubes
 Reinforcing sleeves
 Straining rings
 Ferrules
 Tube lengths
 Tube bushings
 Tube sleeves

Tubular rivets
 Compression ferrules
 Spacer tubes
 Support sleeves

PROFILE PRODUCTS

