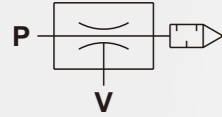


Symbol



Features

- * Port size: 1/8", 1/4", 3/8"
- * When compressed air through nozzle creates high speed drainage and make side attracting function

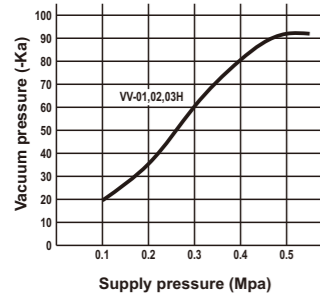


How to order

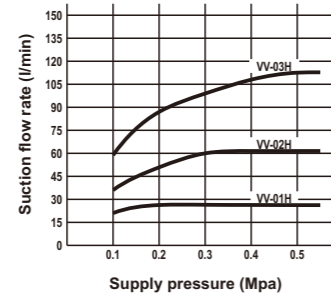
VV	—	01	N	H
Vacuum ejector		Port size	Thread	Standard type
		01 1/8"	Blank G	
		02 1/4"	N NPT	
		03 3/8"	R Rc	

Characteristics Table

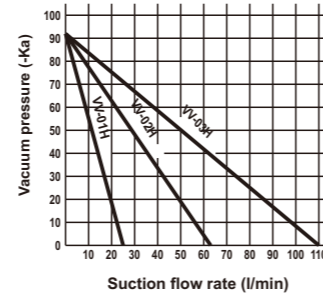
Vacuum pressure function



Max. Suction flow function



Vacuum function

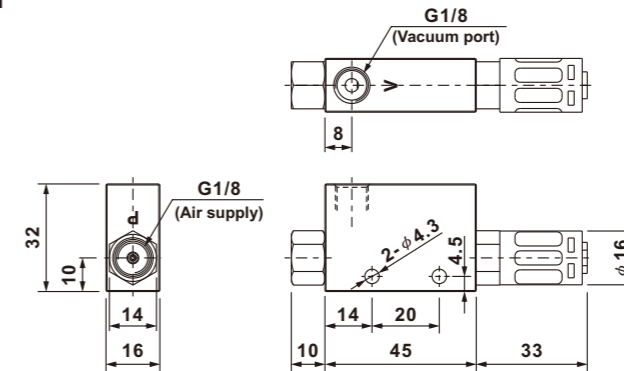


Specifications

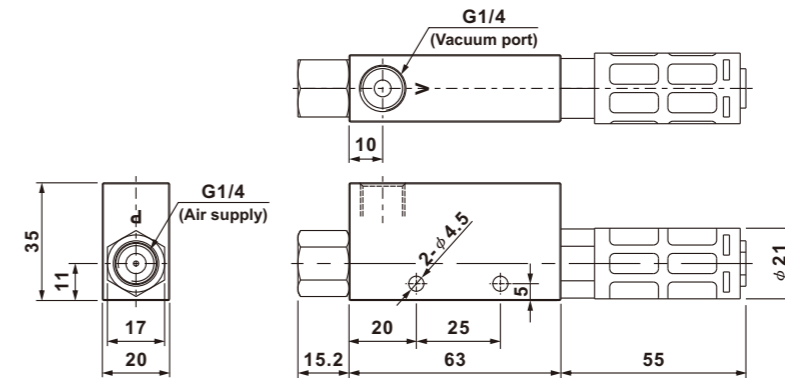
Model	VV-01H	VV-02H	VV-03H
Port size	1/8"	1/4"	3/8"
Body material		Aluminum alloy	
Fluid		Compressed air	
Ambient temperature		0°C ~ 60°C	
Working pressure		0.1 ~ 0.6Mpa	
Max. Vacuum degree		-91.8Kpa	
Nozzle diameter	φ 1.0	φ 1.5	φ 2.0
Air consumption (l/min)	50	120	210
Supply air pressure		0.5Mpa (5 kgf/cm ²)	
Net weight	72.1 g	138.5 g	368 g

Dimensions

VV-01H



VV-02H



VV-03H

