



TM.P. S.p.A. Termomeccanica Pompe  
Bare-shaft Compressors Division

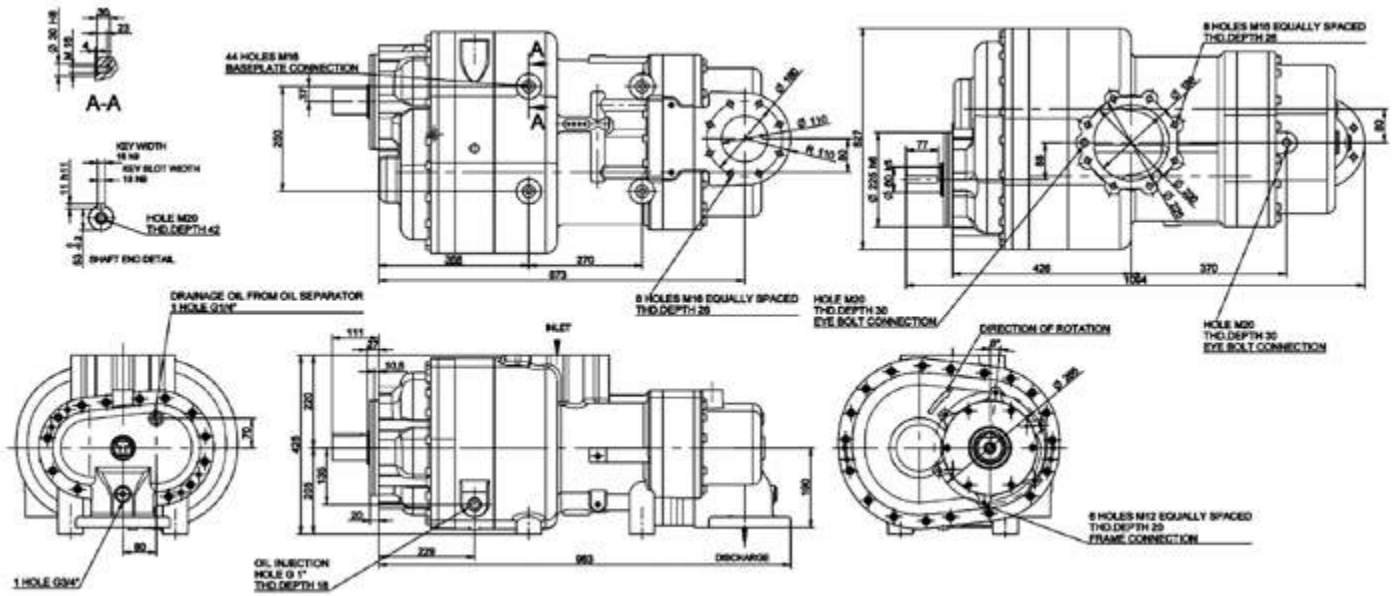


Screw compressors  
for air applications  
(part 2/2)

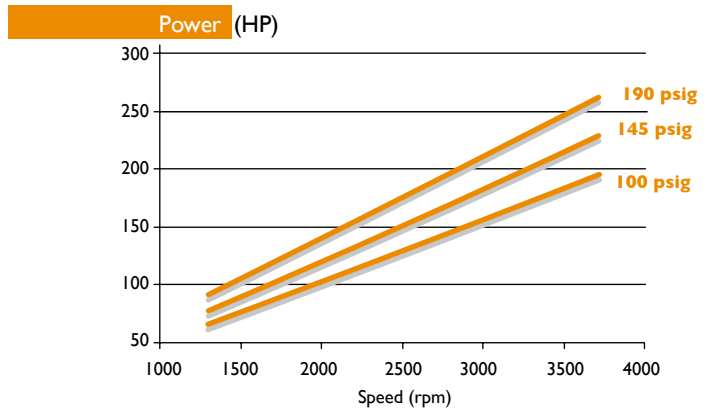
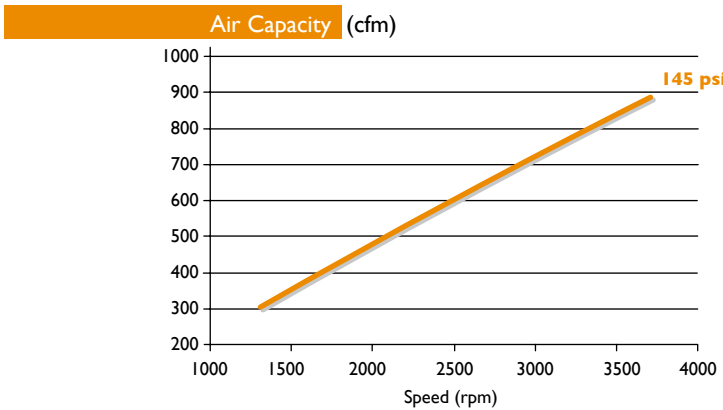
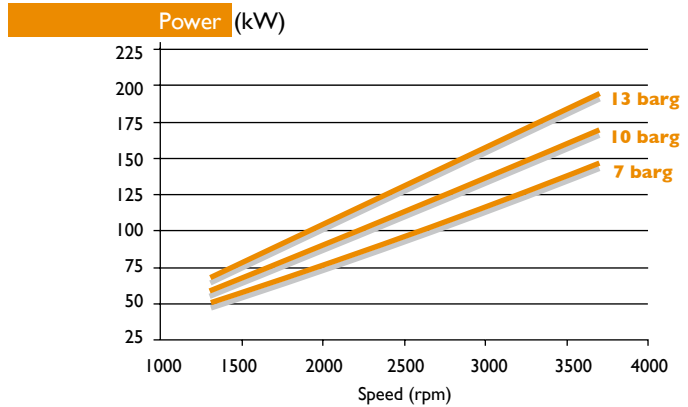
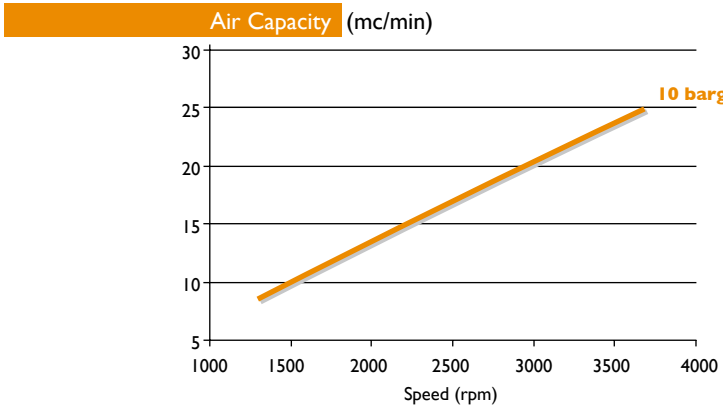


## SCA22G-R

Outside view drawing



### Data Tables



Drive: Male  
Lobe combination: 5/6  
Male rotor size: 217 mm

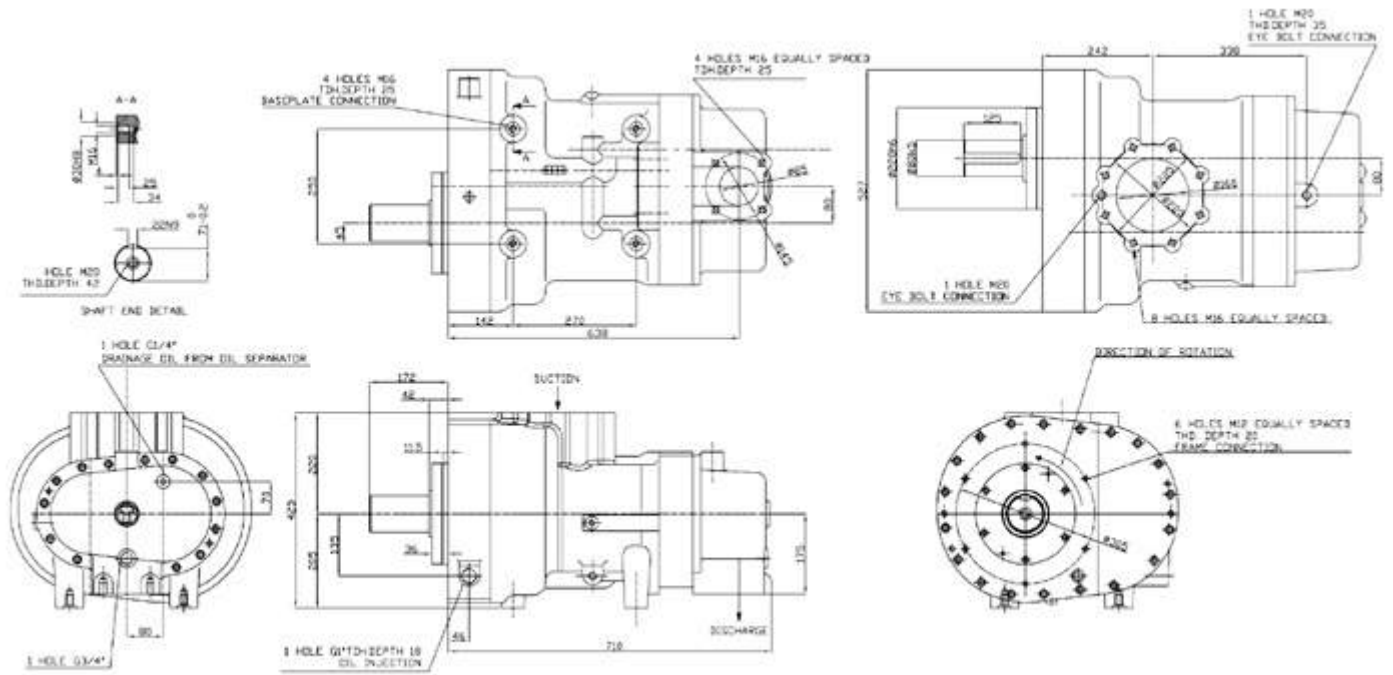
Female rotor size: 183 mm  
L/D: 1,70

Working pressure: min 3 barg/40 psig - max 15 barg/220 psig  
Weight: 490 kg - 1080 lbs



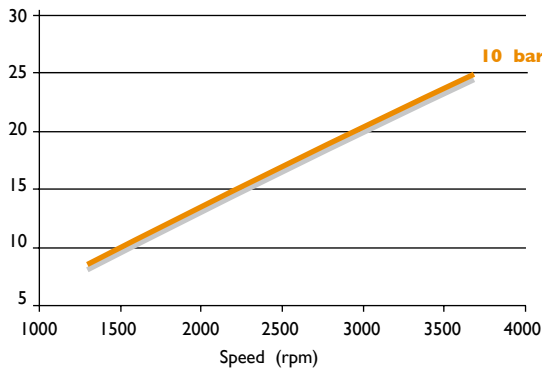
# SCA22B-R

Outside view drawing

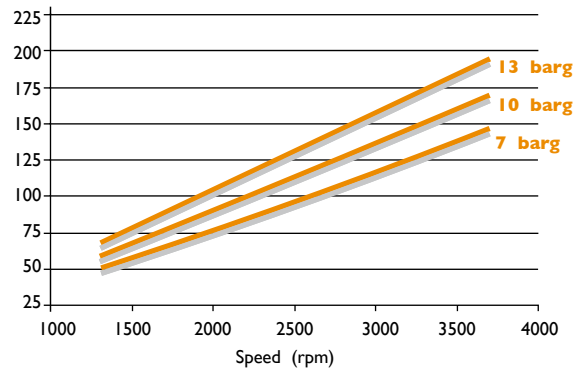


## Data Tables

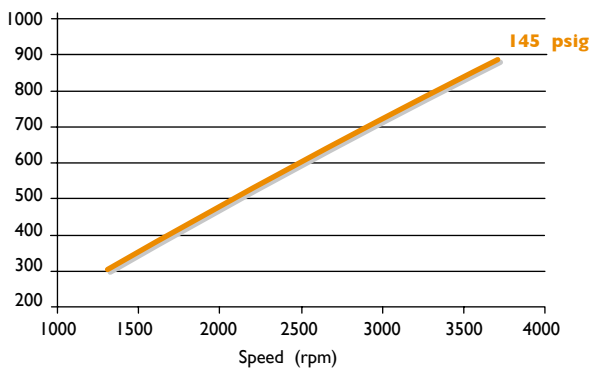
**Air Capacity (mc/min)**



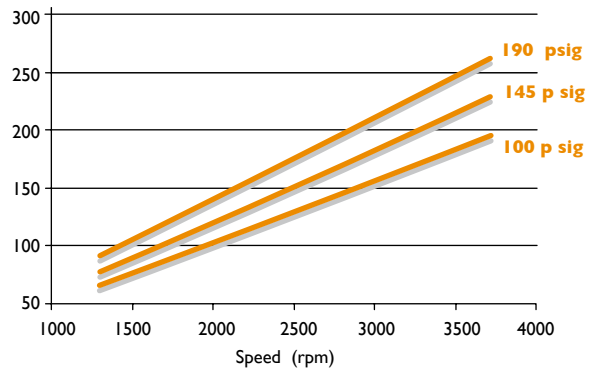
**Power (kW)**



**Air Capacity (cfm)**



**Power (HP)**



Drive: Male  
Lobe combination: 5/6  
Male rotor size: 217 mm

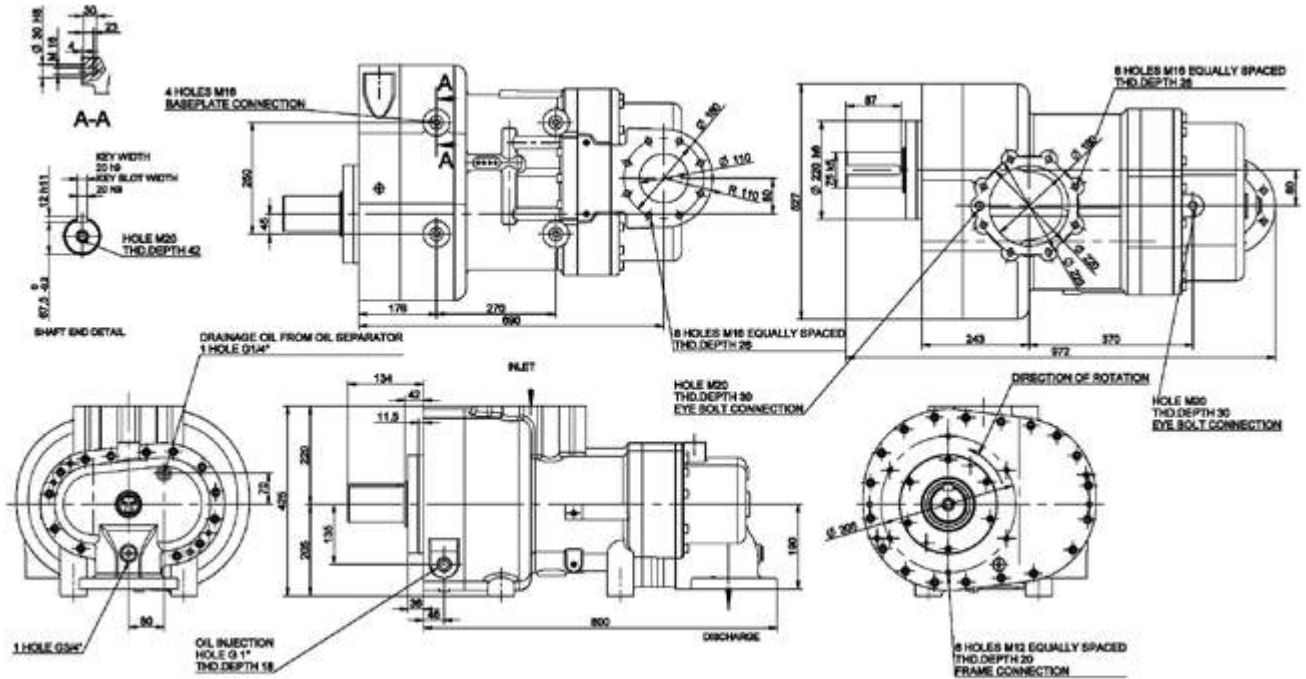
Female rotor size: 183 mm  
L/D: 1,70

Working pressure: min 3 barg/40 psig - max 15 barg/220 psig  
Weight: 397 kg - 866 lbs



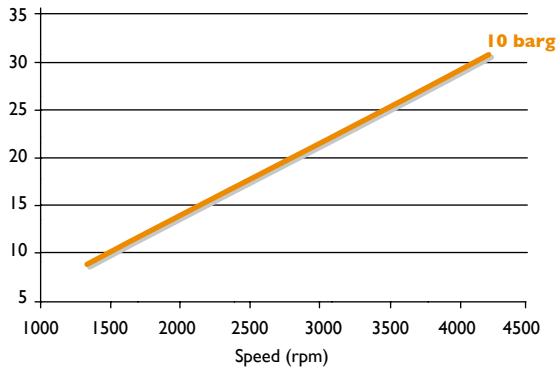
# SCA25D-R

Outside view drawing

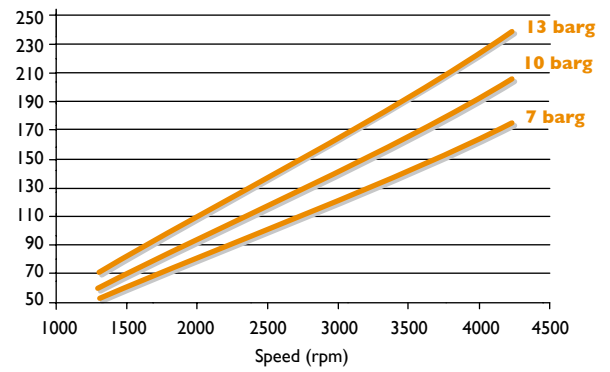


## Data Tables

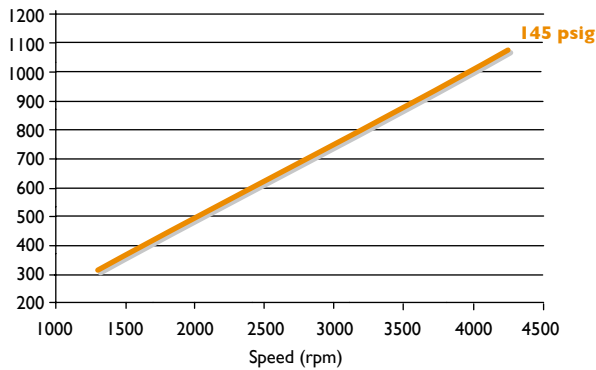
**Air Capacity (m<sup>3</sup>/min)**



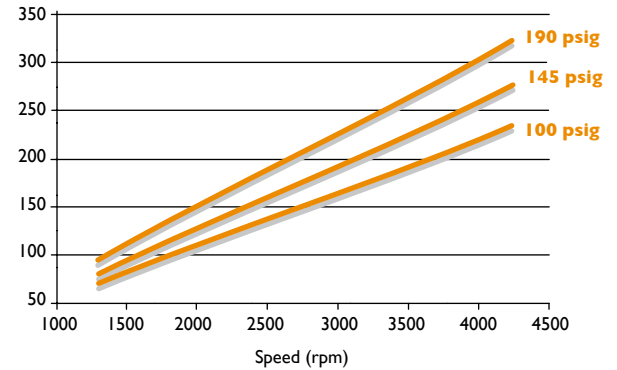
**Power (kW)**



**Air Capacity (cfm)**



**Power (HP)**



Drive: Male  
Lobe combination: 5/6  
Male rotor size: 217 mm

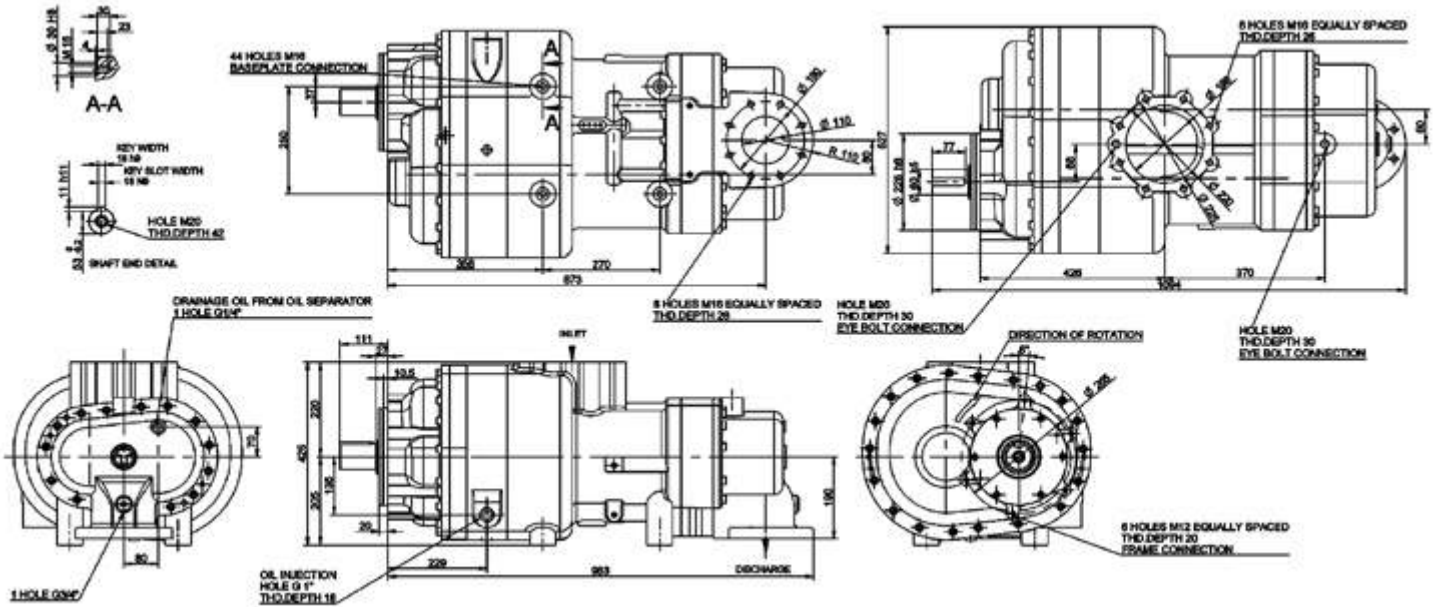
Female rotor size: 183 mm  
L/D: 1,85

Working pressure: min 3 barg/40 psig - max 15 barg/220 psig  
Weight: 429 kg - 945 lbs



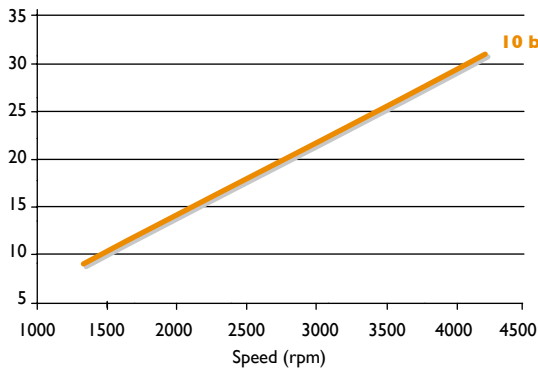
# SCA25G-R

Outside view drawing

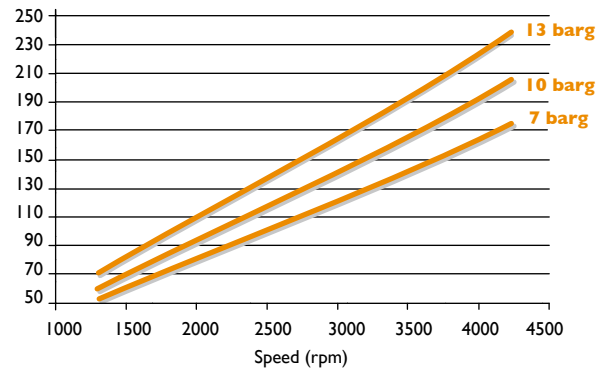


## Data Tables

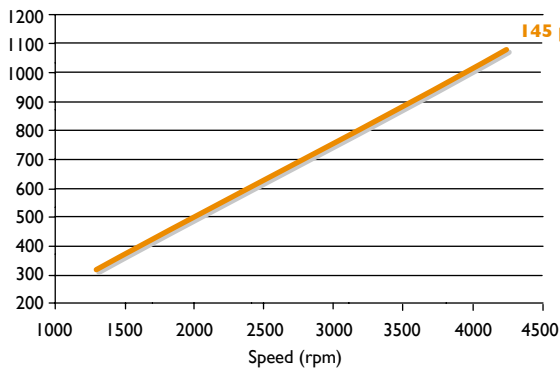
**Air Capacity (m<sup>3</sup>/min)**



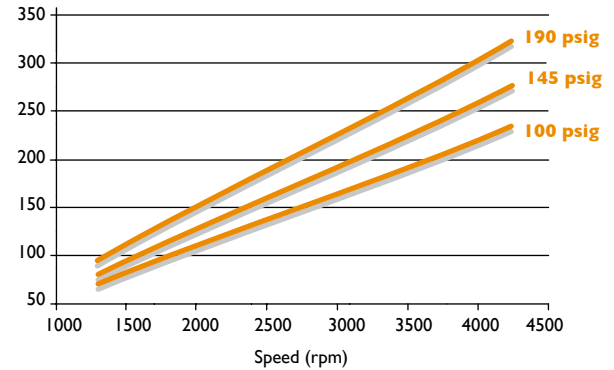
**Power (kW)**



**Air Capacity (cfm)**



**Power (HP)**



Drive: Male  
Lobe combination: 5/6  
Male rotor size: 217 mm

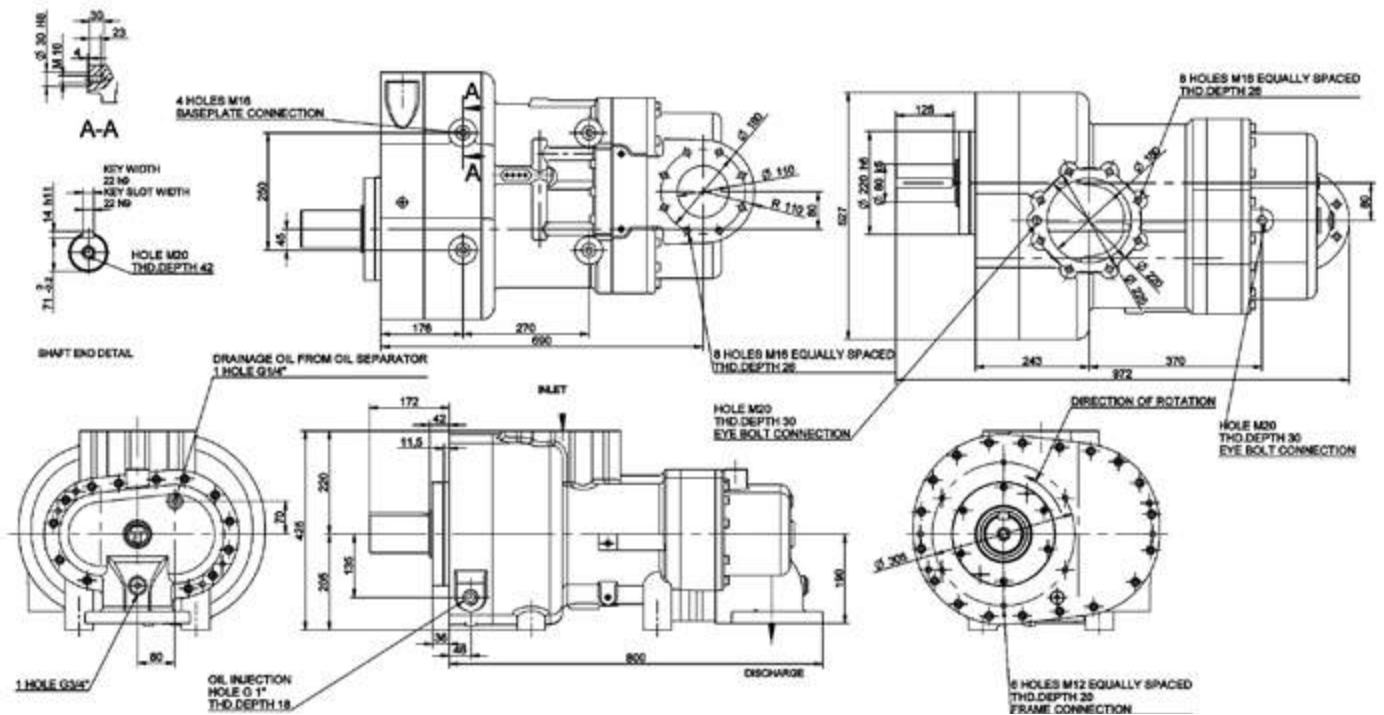
Female rotor size: 183 mm  
L/D: 1,85

Working pressure: min 3 barg/40 psig - max 15 barg/220 psig  
Weight: 526 kg - 1159 lbs

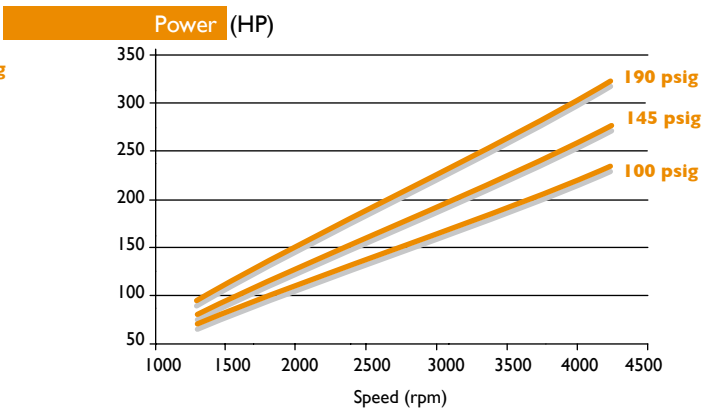
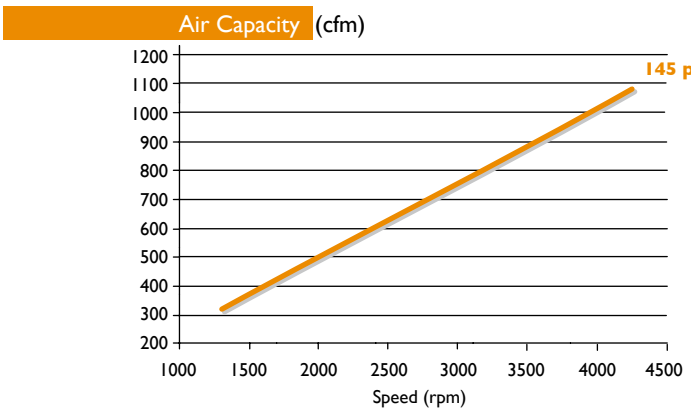
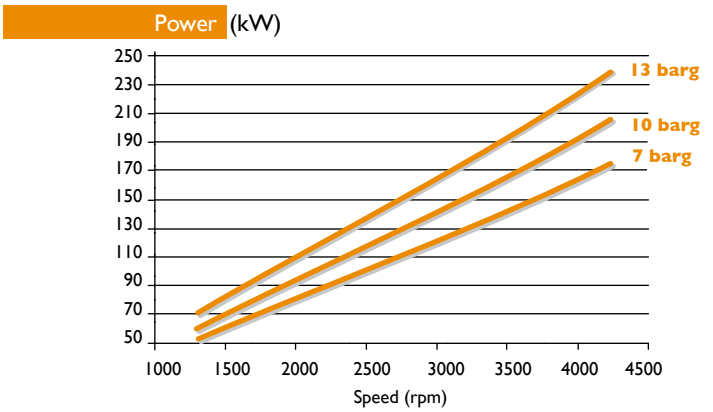
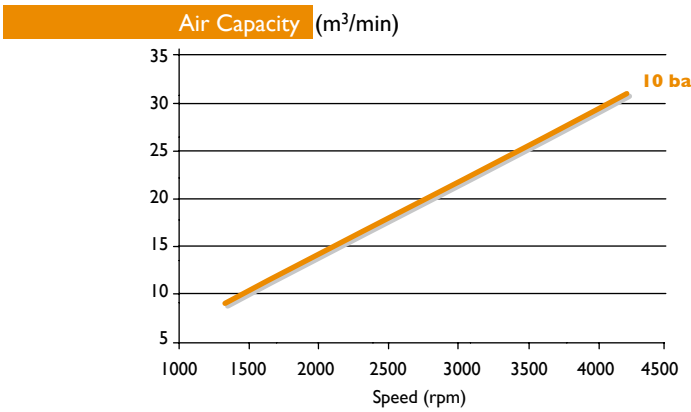


**SCA25B-R**

Outside view drawing



Data Tables



Drive: Male  
 Lobe combination: 5/6  
 Male rotor size: 217 mm

Female rotor size: 183 mm  
 L/D: 1,85

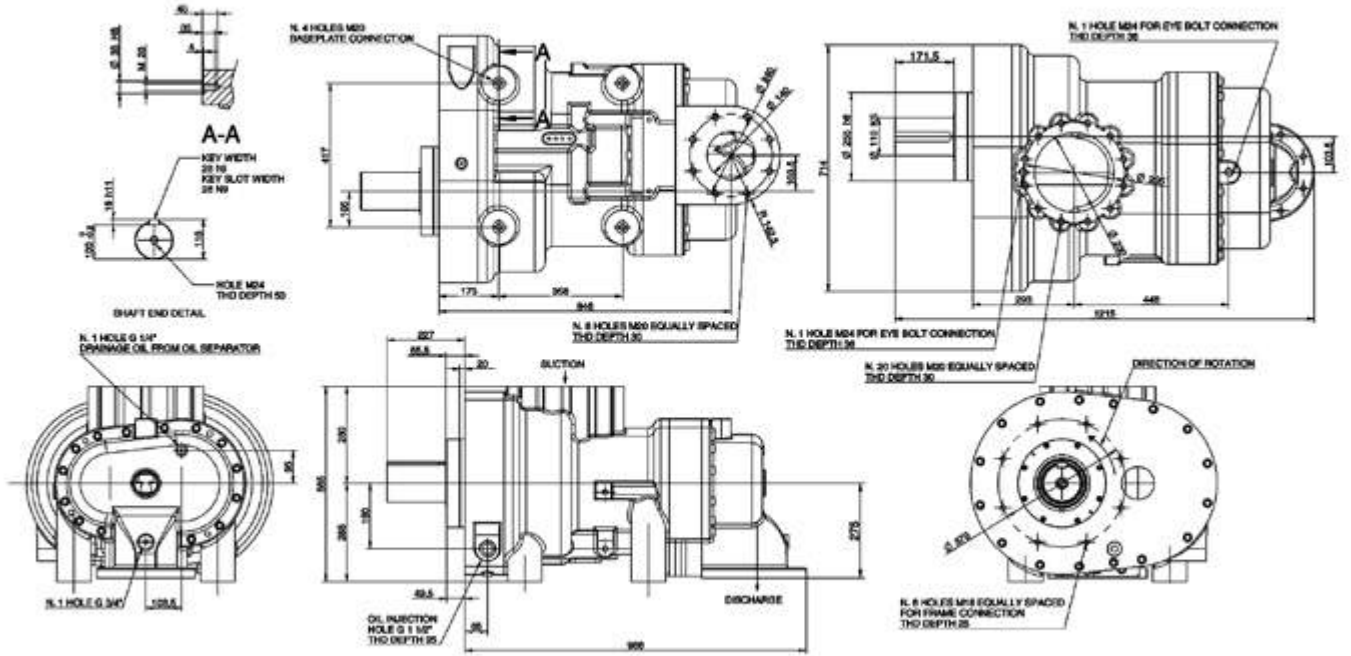
Working pressure: min 3 barg/40 psig - max 15 barg/220 psig  
 Weight: 433 kg - 954 lbs





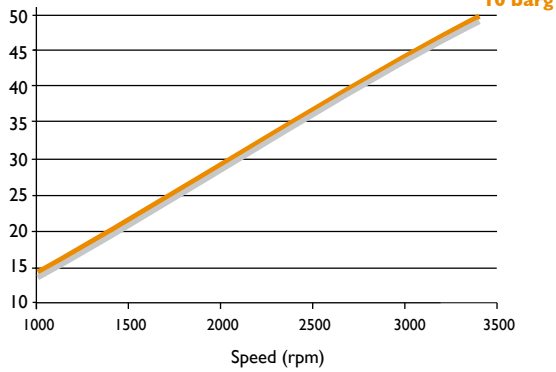
# SCA30D-R

Outside view drawing

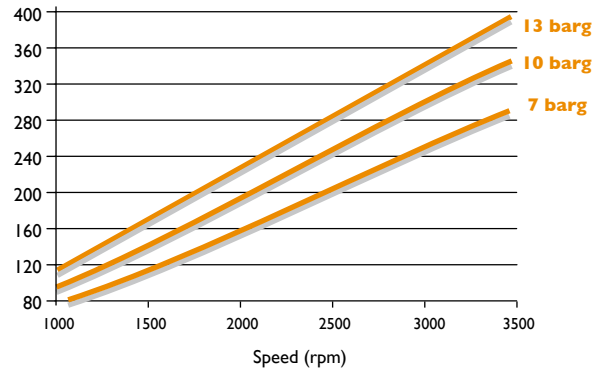


## Data Tables

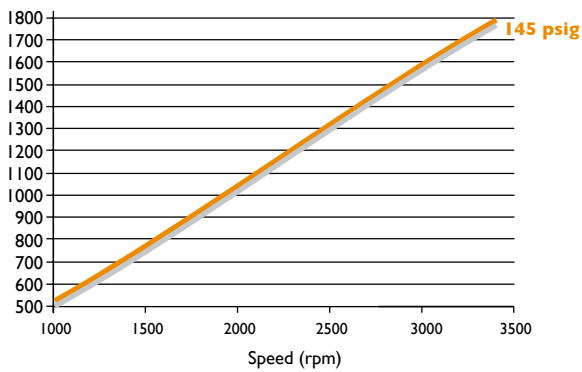
**Air Capacity (m<sup>3</sup>/min)**



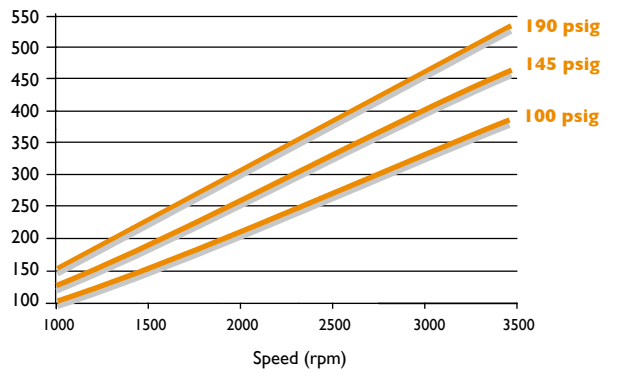
**Power (kW)**



**Air Capacity (cfm)**



**Power (HP)**



Drive: Male  
Lobe combination: 5/6  
Male rotor size: 281 mm

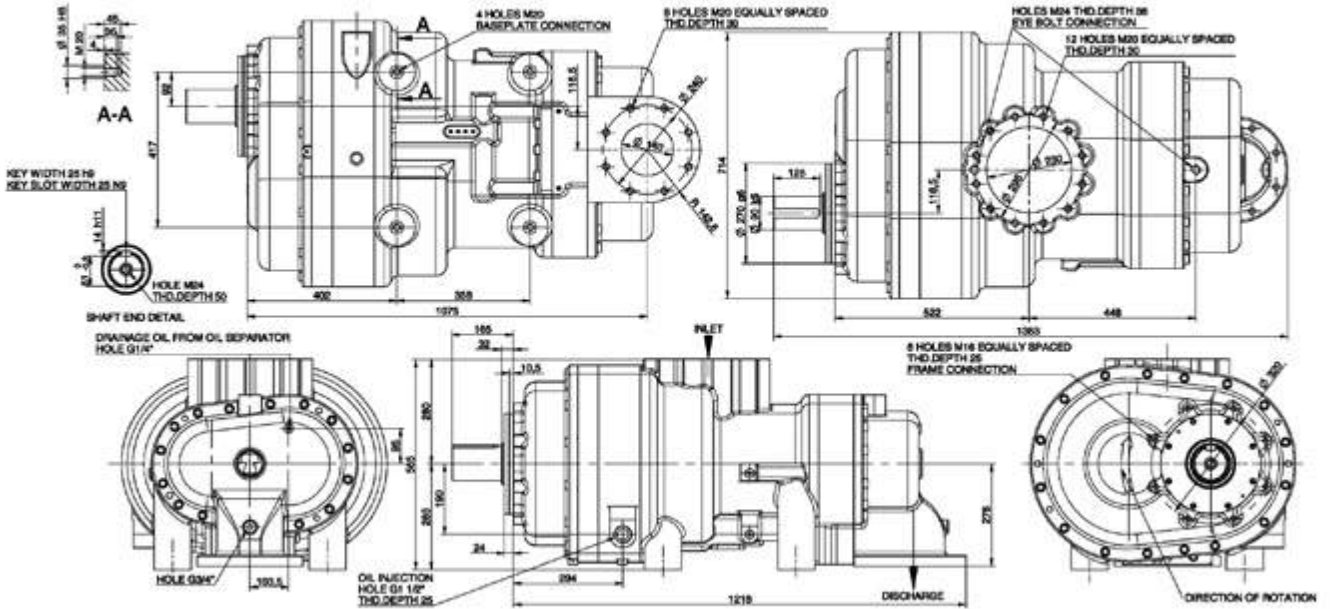
Female rotor size: 233,9 mm  
L/D: 1,70

Working pressure: min 3 barg/40 psig - max 15 barg/220 psig  
Weight: 862 kg - 1900 lbs



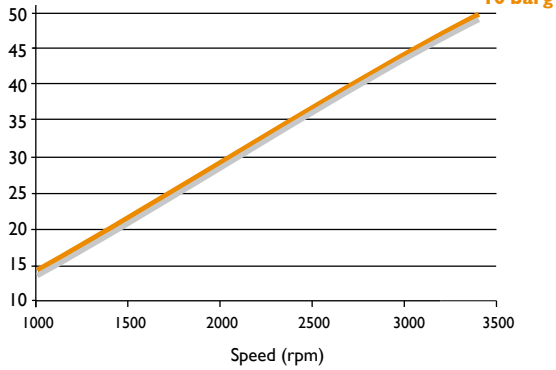
**SCA30G-R**

Outside view drawing

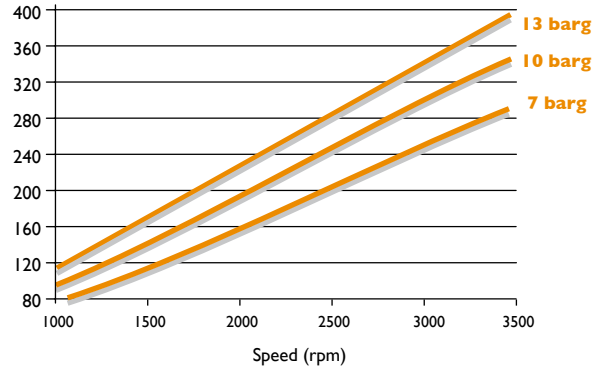


Data Tables

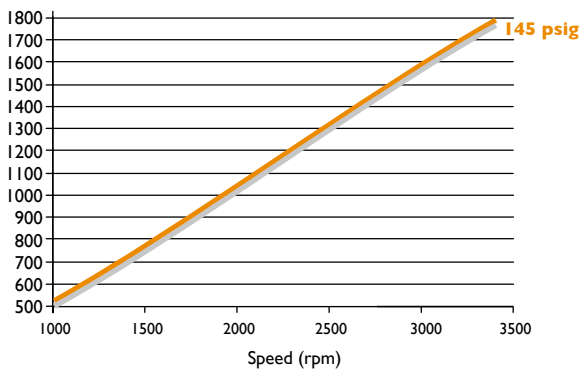
**Air Capacity (m<sup>3</sup>/min)**



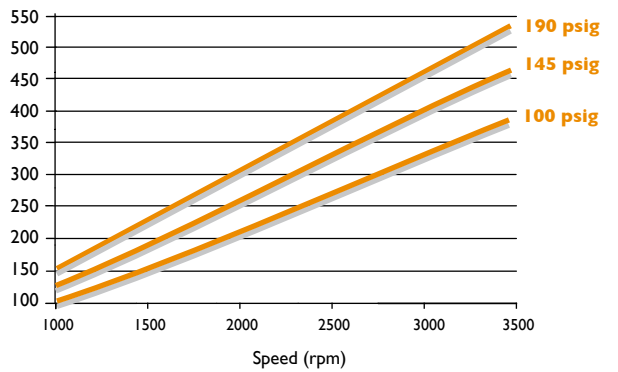
**Power (kW)**



**Air Capacity (cfm)**



**Power (HP)**



Drive: Male

Lobe combination: 5/6  
Male rotor size: 281 mm

Female rotor size: 233,9 mm  
L/D: 1,70

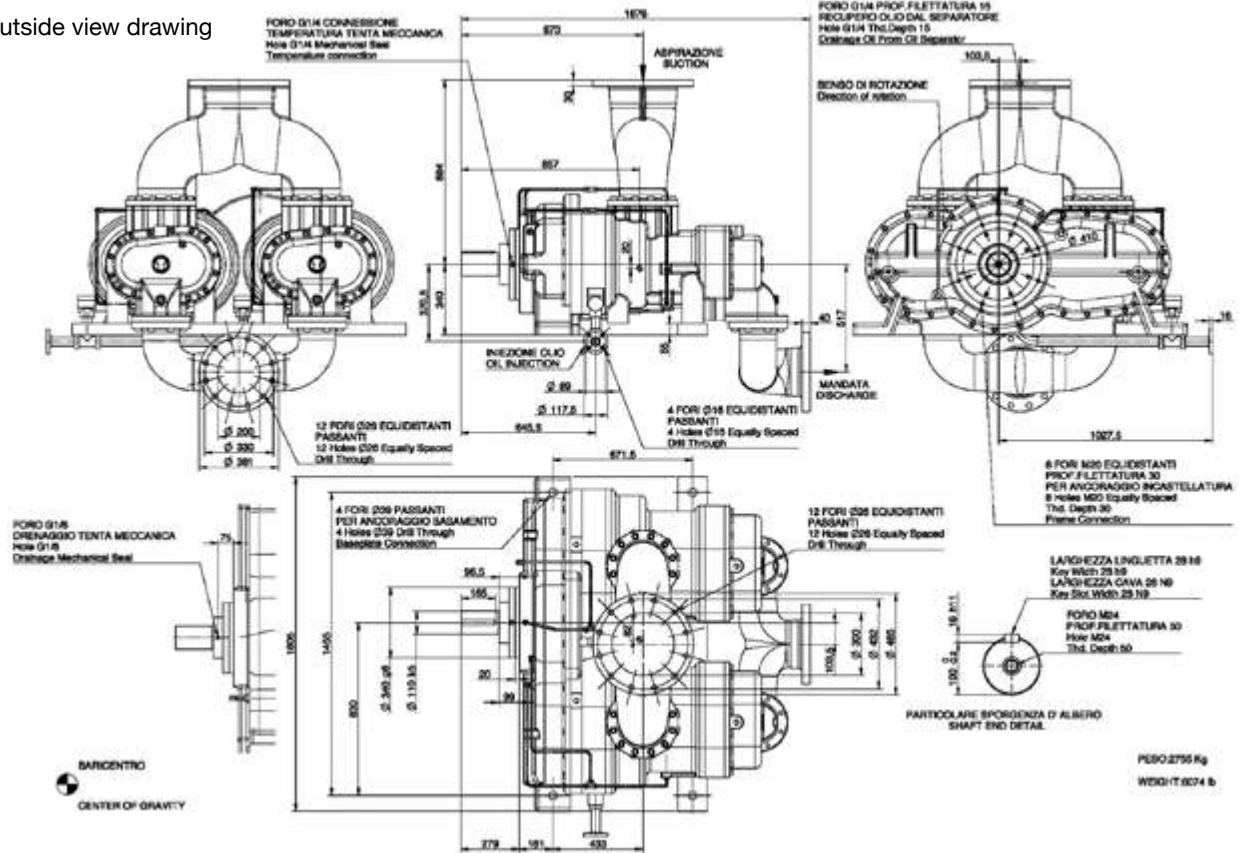
Working pressure: min 3 barg/40 psig - max 15 barg/220 psig  
Weight: 1095 kg - 2414 lbs



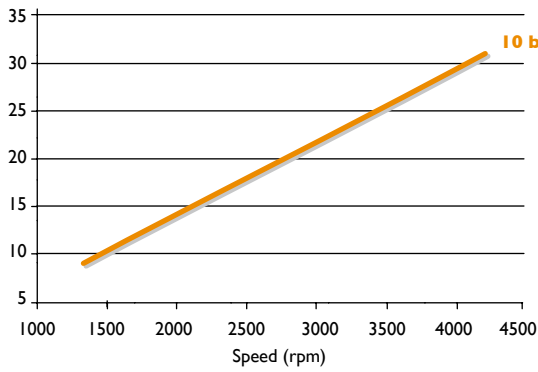


# SCA30TWIN

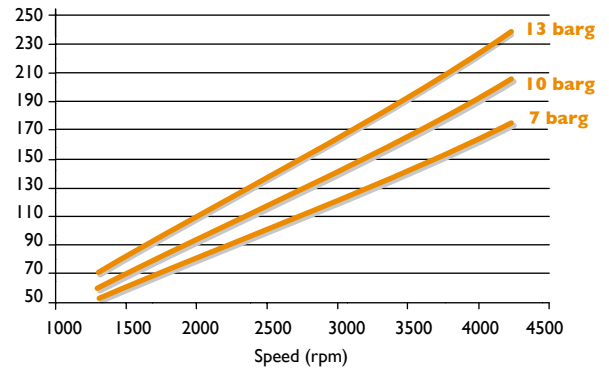
Outside view drawing



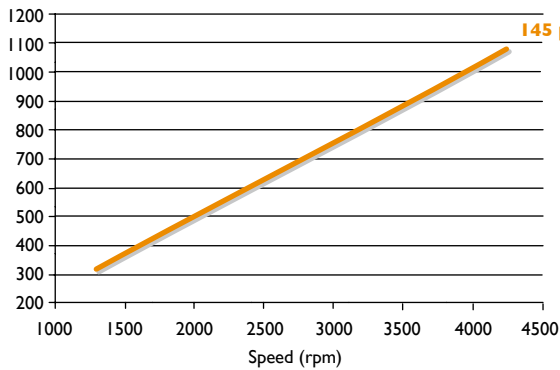
Air Capacity (m<sup>3</sup>/min)



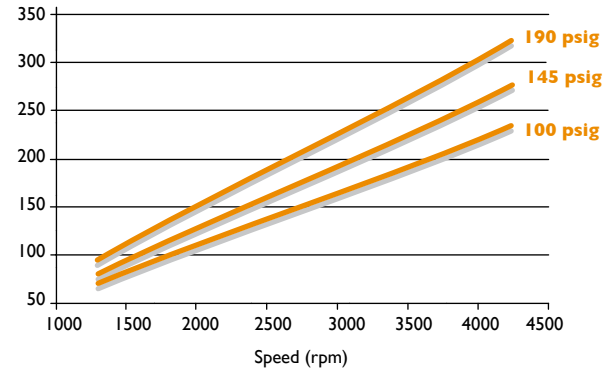
Power (kW)



Air Capacity (cfm)



Power (HP)



Drive: Male  
Lobe combination: 5/6  
Male rotor size: 281 mm

Female rotor size: 233,9 mm  
L/D: 1,70

Working pressure: min 3 barg/40 psig - max 15 barg/220 psig  
Weight: 2756 kg - 6074 lbs



## SCI new integrated oil injected screw compressor

### Shaft seal

A new configuration of the seal ring, including two seal lips and one dust lip in PTFE, and a dust ring, assures great reliability, long life and resistance to impurities.

### Painting

All screw compressors have a modern, environmentally friendly, protective paint. The surface finish protects the castings effectively against corrosion even after many years of operation.

### Air filter

The quality of the filters used in the integrated series "SCI" ensures the performance and increases the reliability of the compressor unit.

### Casing

Modern numerical control machining centers, constantly monitored by means of continuous testing technical specialization and continual modernization with the most technically up-to-date machinery, is applied in all machining work in order to guarantee the obligation we assume towards the Certified Quality of our compressors.



### Rotors

The heart of every screw compressor is the air end. The multistage automatic screw manufacturing process, operated with latest CNC machines and the use of top grade materials assure the closest tolerances as well as greater reliability. A final grinding process, coupled with computer operated multistep rotor control guarantees 100% accuracy of each rotor profile.

### Bearings

Because of rotational speeds and bearing loads TM.P. screw compressors are equipped with, top quality bearings that provide a high bearing capacity and assure long bearing life.

### Oil separator

In the "SCI", series the oil separation occurs in two stages: the first stage of mechanical oil separation takes place inside the compressor, the finer second stage occurs in coalescence oil removing elements. Micro-fibres separate the oil drops from compressed air. The separate oil, in big drops, is sent back to the compressor lubricating circuit.

### TM.P. Valves

The performance of a compressor is influenced by the quality of its valves. All TM.P. "SCI" compressors are fitted with valves specifically designed to ensure economical operation and high reliability.



## SCI series

### Product features

---

#### Main features

New profile 5/6 lobe relation

High volumetric efficiency

Low running cost

Low air discharge temperature

Low noise level

Discharge pressure range of 3 barg to 13 barg (43.5 psig to 190 psig) higher pressure upon request

PTFE double lip seal

#### Integration

Thermostatic valve

Minimum pressure valve

Intake regulator

Oil filter

Air filter

Oil separator filter

Solenoid valve

Oil recovery system

### Sizes

---

#### SCI7

SCI7D

#### SCI8

SCI8D - SCI8G

#### SCI10

SCI10D - SCI10G

**D** direct version

**G** gearbox version





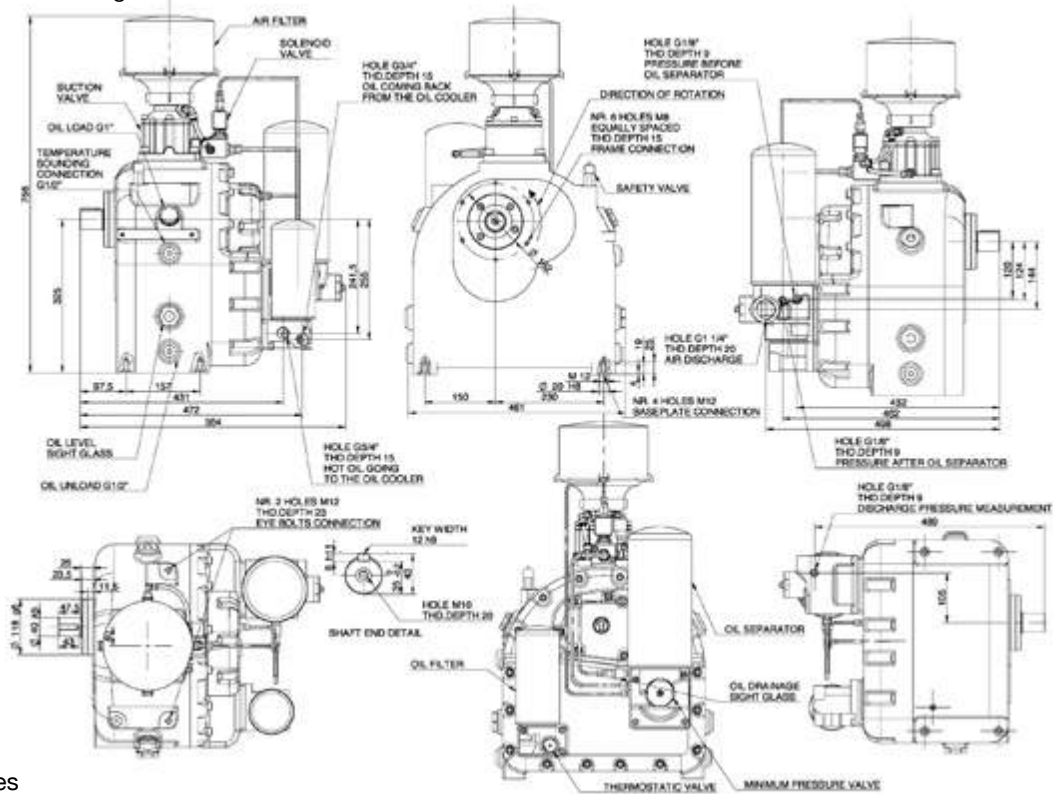






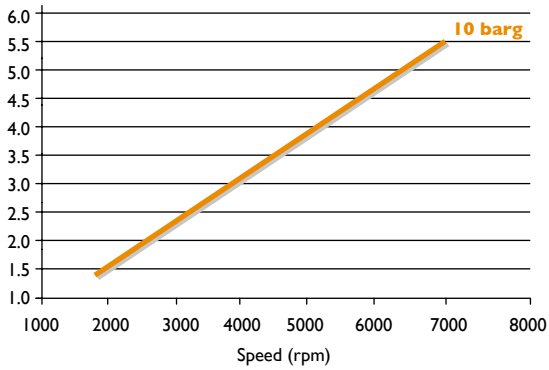
# SCI10D

Outside view drawing

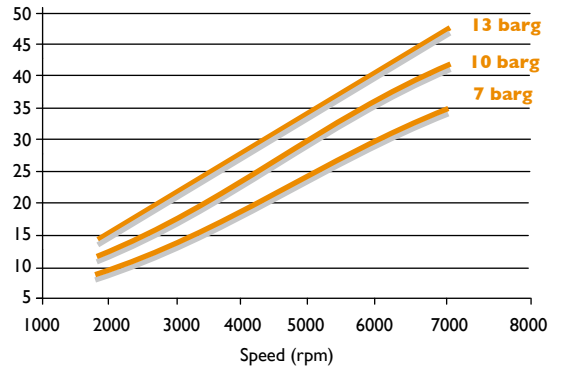


Data Tables

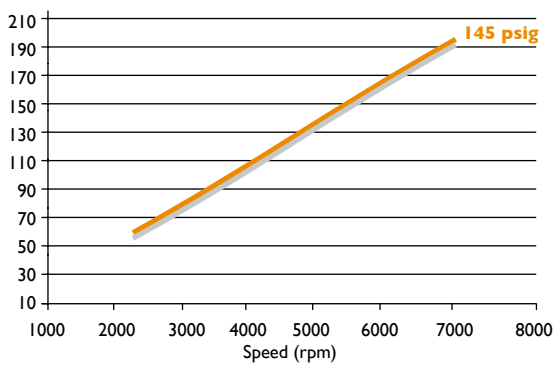
**Air Capacity (mc<sup>3</sup>/min)**



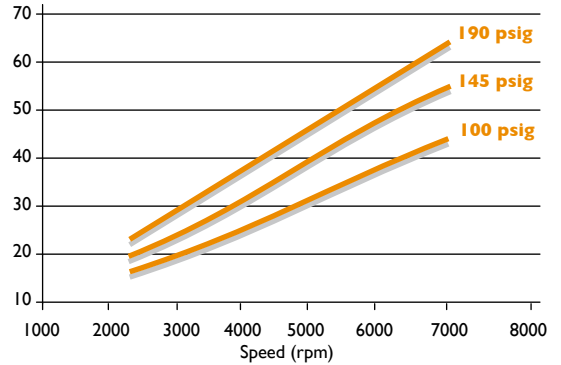
**Power (kW)**



**Air Capacity (cfm)**



**Power (HP)**



Drive: Male

Lobe combination: 5/6

Male rotor size: 108,6 mm

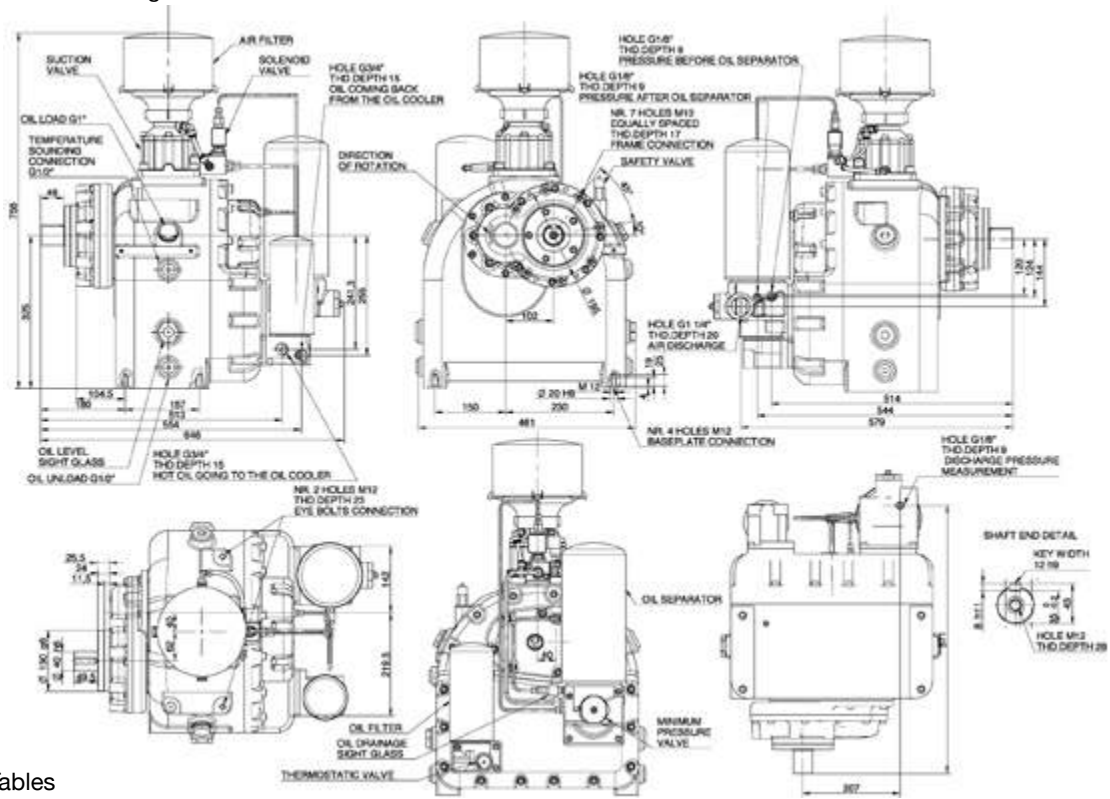
Working pressure: min 3 barg/40 psig - max 13 barg/190 psig

Weight: 145 kg - 320 lbs



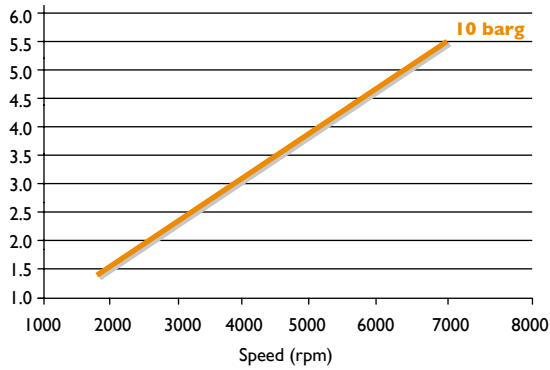
# SCI10G

Outside view drawing

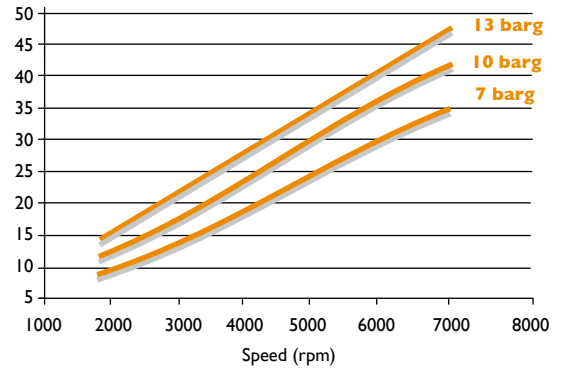


Data Tables

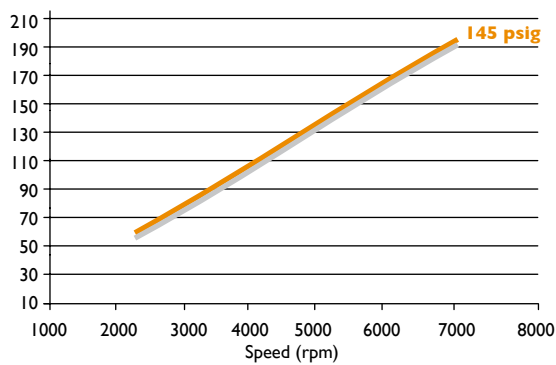
**Air Capacity (mc<sup>3</sup>/min)**



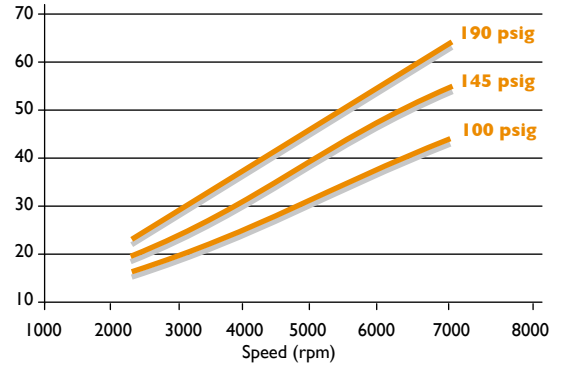
**Power (kW)**



**Air Capacity (cfm)**



**Power (HP)**



Drive: Male  
Lobe combination: 5/6  
Male rotor size: 108,6 mm

Working pressure: min 3 barg/40 psig - max 13 barg/190 psig  
Weight: 163 kg - 360 lbs



We make  
your air compression easier



## Termomeccanica Pumps Bare-shaft Compressors Division

The Italian specialist  
in designing and manufacturing  
bare-shaft screw compressors  
for air applications



## SLC series

### Product features

---

#### Main features

- Optimised rotor profile 3/5 lobe relation
- Discharge pressure up to 2.5 barg
- PTFE double lips seal
- Low running cost
- High volumetric efficiency
- Integrated oil pump for oil lubrication

### Sizes

---

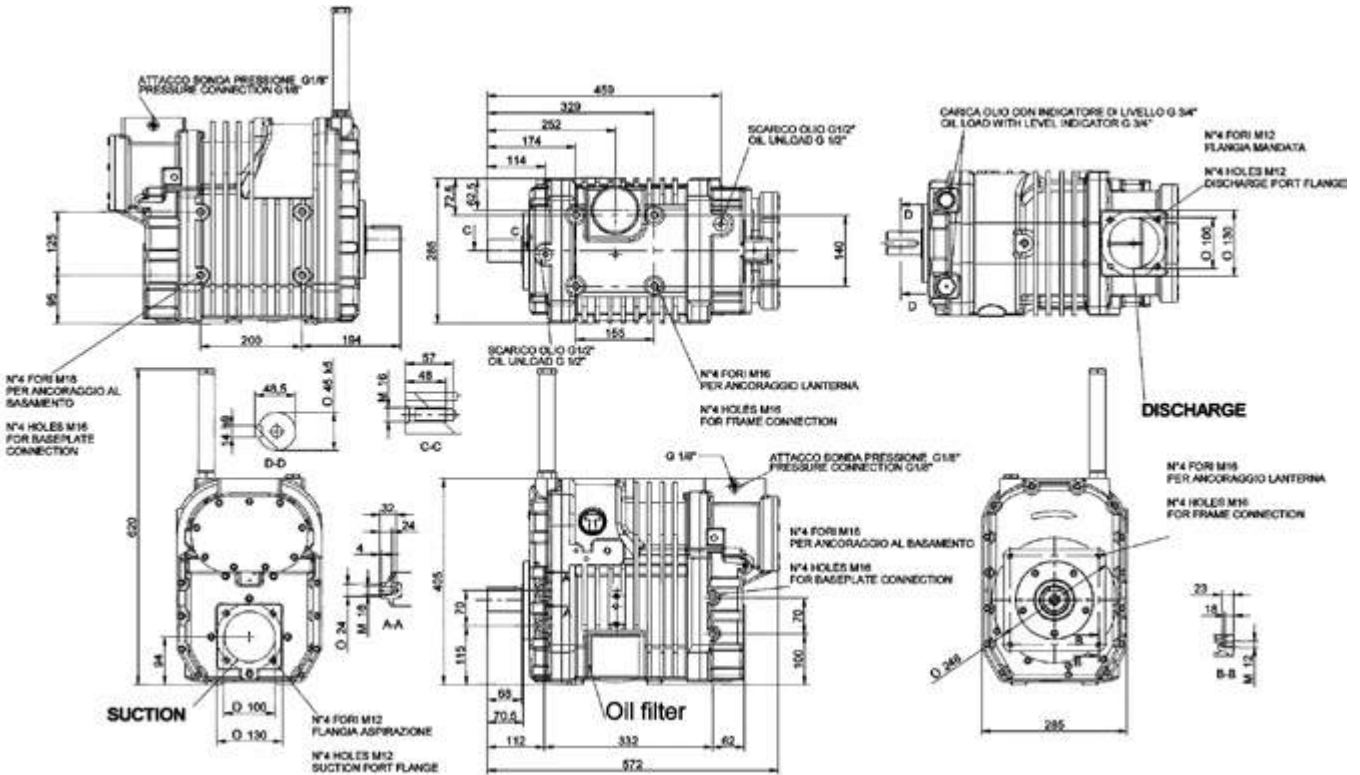
**SLC**  
SLC1 - SLC2



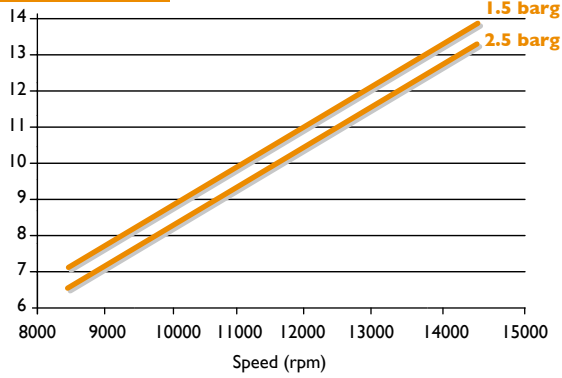


# SLC1

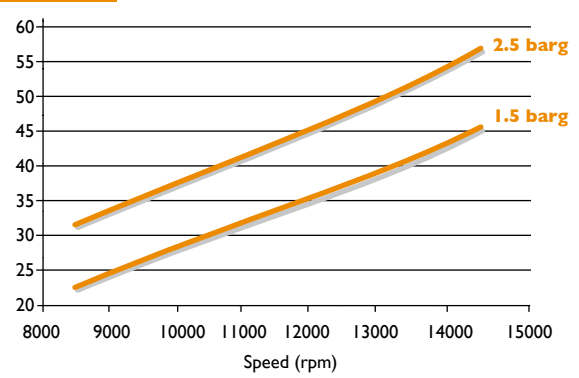
Outside view drawing



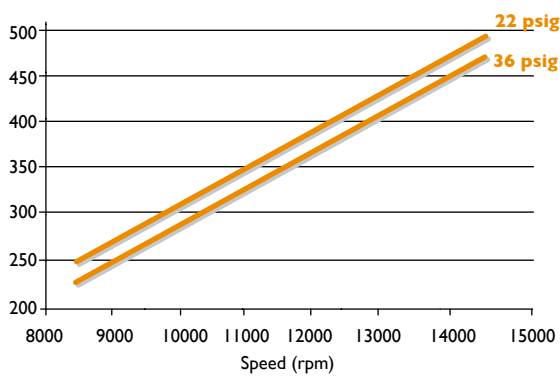
**Air Capacity (m<sup>3</sup>/min)**



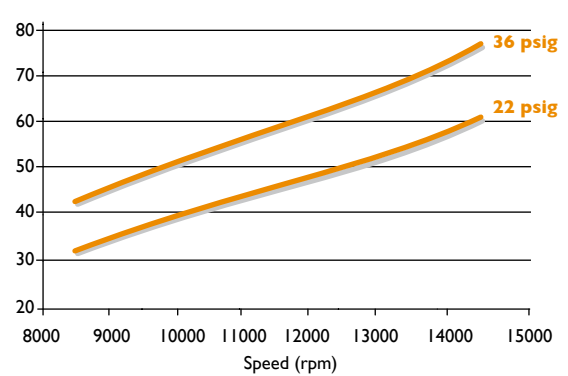
**Power (kW)**



**Air Capacity (cfm)**



**Power (HP)**



Drive: Female  
Lobe combination: 3/5  
Male rotor size: 111 mm

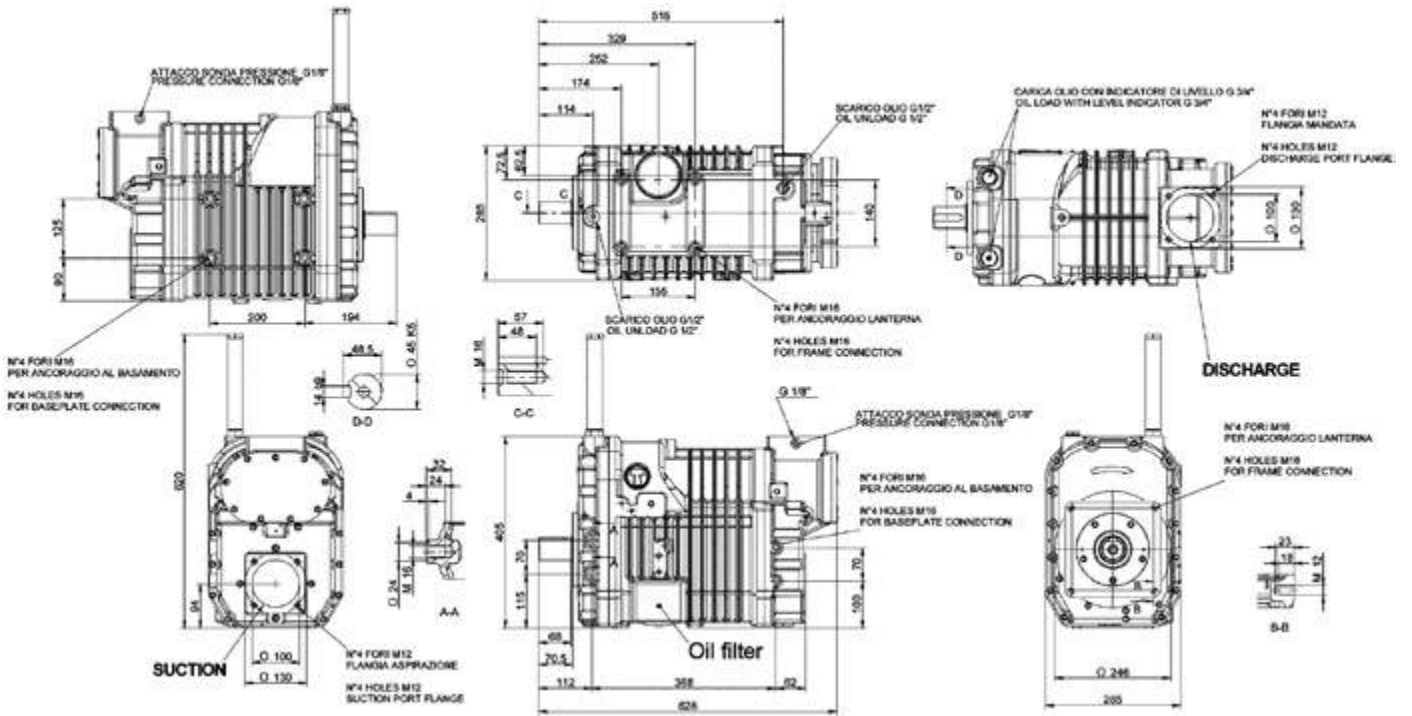
Female rotor size: 111 mm  
L/D: 1,40  
Flow: 650 m<sup>3</sup>/h

Working pressure: max 2,5 barg  
Weight: 140 kg - 308 lbs

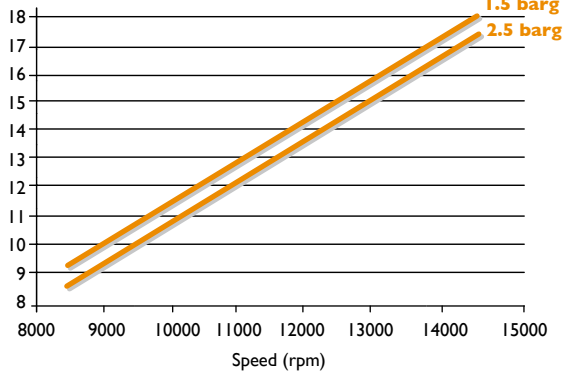


# SLC2

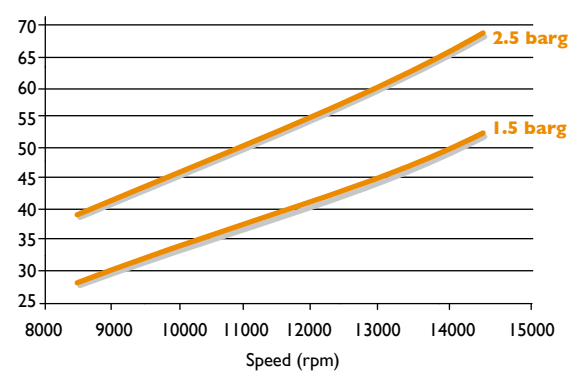
Outside view drawing



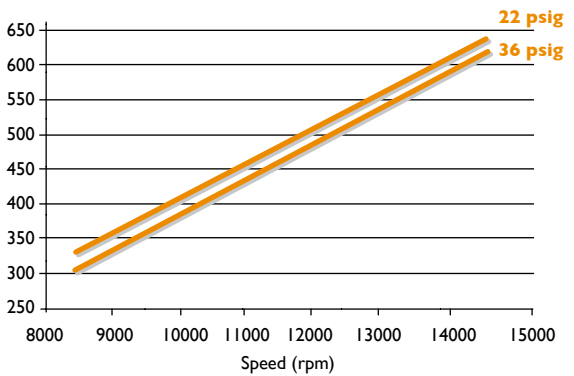
**Air Capacity (m<sup>3</sup>/min)**



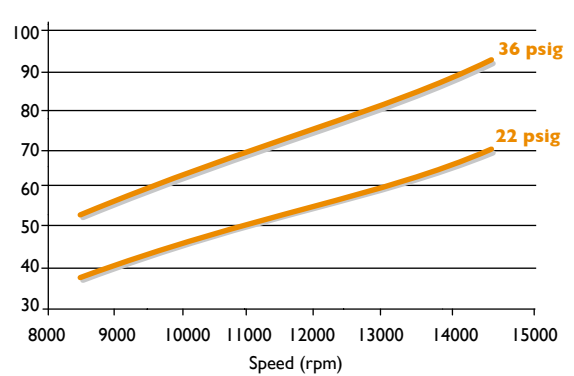
**Power (kW)**



**Air Capacity (cfm)**



**Power (HP)**



Drive: Female  
Lobe combination: 3/5

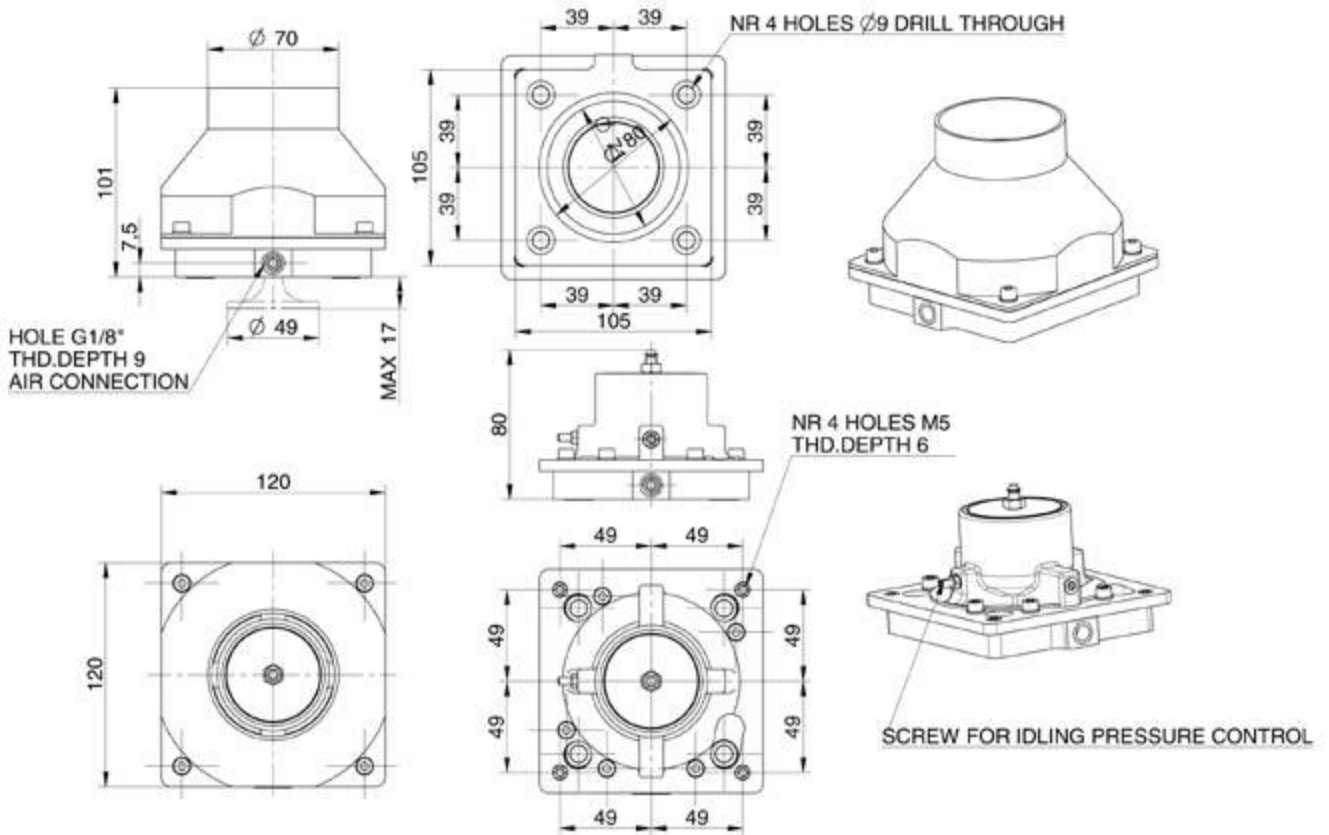
Female rotor size: 111 mm  
L/D: 1,90

Working pressure: max 2,5 barg  
Weight: 150 kg - 330 lbs



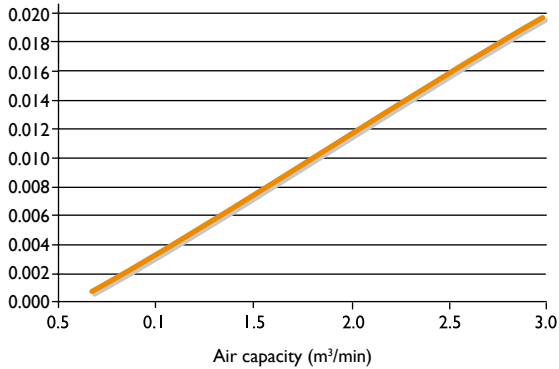
## VALVES SCV30

Outside view drawing

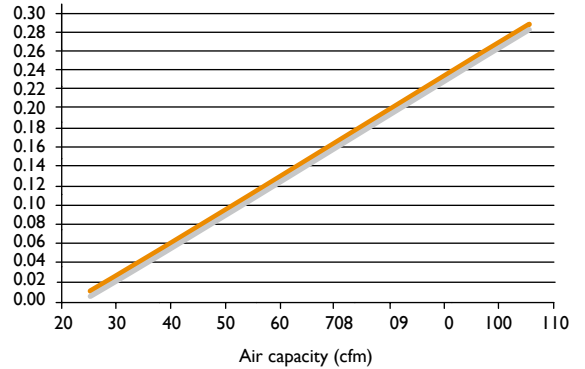


Data Tables

Pressure drop (bar)



Pressure drop (psi)

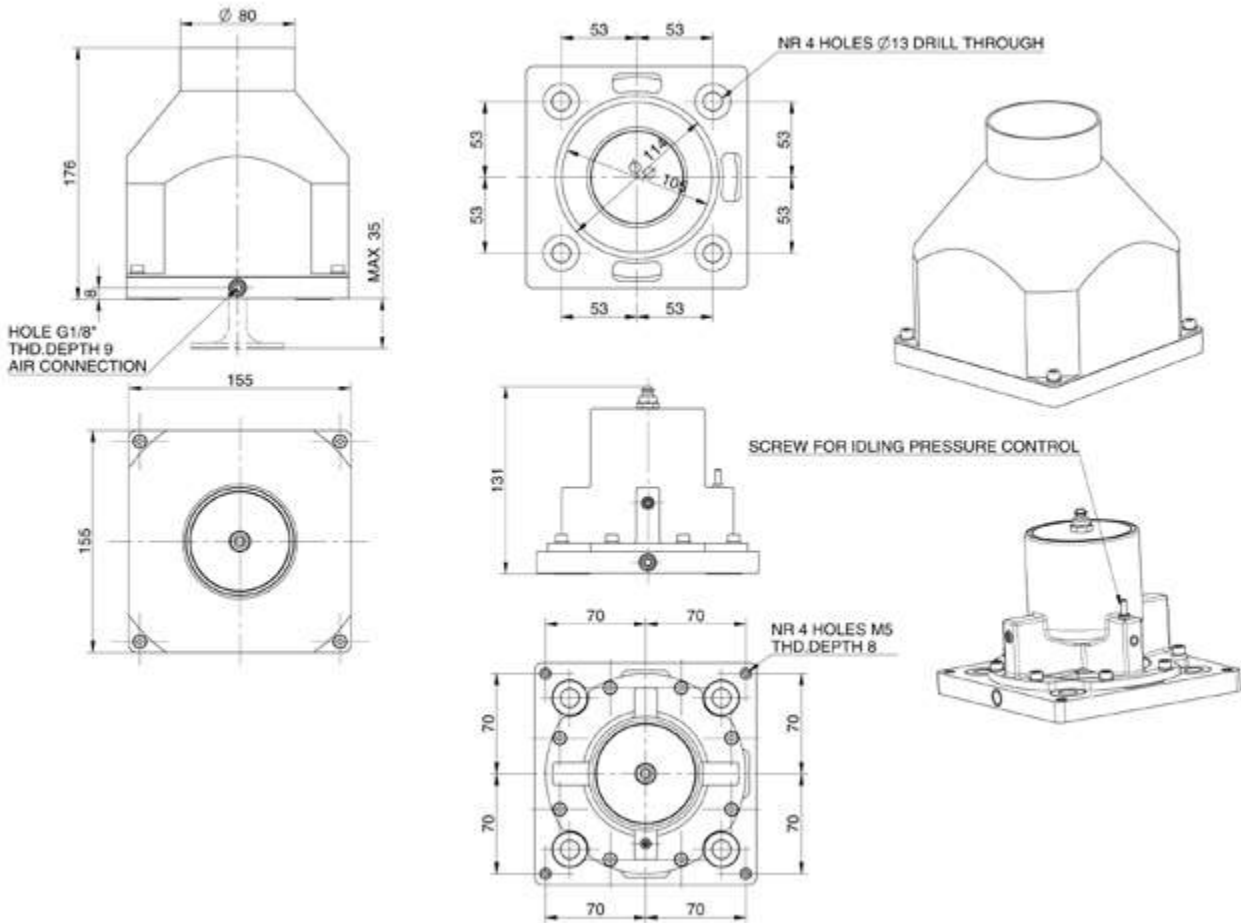


Idling pressure control range



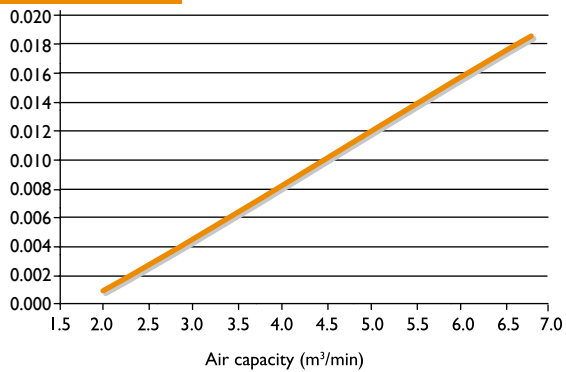
## VALVES SCV70

Outside view drawing

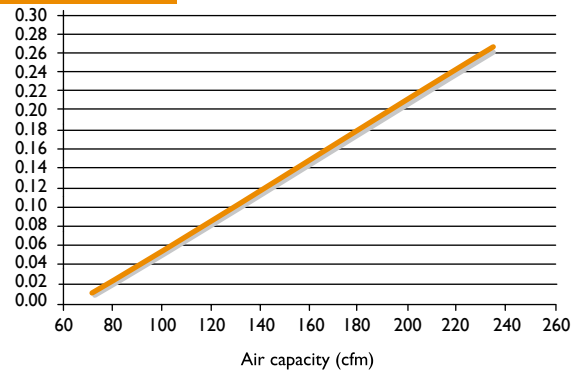


Data Tables

Pressure drop (bar)



Pressure drop (psi)



Idling pressure control range



## Bare-shaft Division

### Products overview

# TM.P. Oil Injected Gas Ends



### NGSERIES

Capacity range: 0,35-45 m<sup>3</sup>/min  
Suction pressure: up to 2 bar  
Max discharge pressure: 20 bar

Fixed Vi  
Max power: 450 kW

### SCG SERIES

Capacity range: 1,2-13 m<sup>3</sup>/min  
Suction pressure: up to 3,5 bar  
Max discharge pressure: 24 bar

Variable Vi system  
Max power: 110 kW

### INTEGRATED FOR GAS

Capacity range: 0,2-5,5 m<sup>3</sup>/min  
Suction pressure: up to 2 bar  
Max discharge pressure: 20 bar

Max power: 45 kW





TM.P. S.p.A. Termomeccanica Pompe  
Bare-shaft Compressors Division



TM.P. S.p.A. - Termomeccanica Pompe  
Via del molo, 3 - 19126 La Spezia - Italy  
Tel. +39 0187 5521 / Fax. +39 0187 552464  
e-mail: [bareshaftcompressors@termomeccanica.com](mailto:bareshaftcompressors@termomeccanica.com)  
[www.tmp.termomeccanica.com](http://www.tmp.termomeccanica.com)