

THE JOURNEY

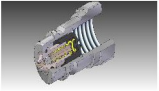
Beginning in late seventies, when **UNITREAD** started it was very much fascinated by pneumatic quick couplings used in various tyre and garage tools. We then decided to give it a try to develop couplings and it was after burning many midnight oils, did we get the hang of the product. Over the 80's we put them in the commercial market. The passion for the product, kept us engaged in experimenting further and slowly but surely we decided to make it a business venture.



And thus, began our journey.....

ENGINEERING & DEVELOPMENT

UNITREAD's team of highly experienced engineers develop products that meet or exceed customer's expectations. We provide solutions to specific applications, innovation and product improvement is a continuous process that surrounds all types of couplings including defense, aerospace, underwater, mobile hydraulics, industrial applications, etc. At every step of this collaborative effort from consultation through design, prototyping and manufacturing our customers become thoroughly aware of our expertise and knowledge necessary to solve their demanding applications.



Today, we have a 3D Design Studio with 3D Printing for rapid prototyping among other facilities.

MANUFACTURING & ASSEMBLY

From ordinary manual lathes for production, we moved to single spindle automats and multi operation lathes over the last few years. Still it posed challenges in consistency and repeatability and by the early nineties, when CNC machines started to arrive on the scene, we took the first initiative to install one such machine and we could thereafter, develop many new varieties.



Today, we have several state of the art equipment spread over a 40,000 sq. ft. Area and with further room to grow.

QUALITY

Quality is an integral part of the **UNITREAD's** DNA to provide the customer end to end solution from concept to final product. Considerable time and effort is put in place to train our team members to be conscious about quality at every stage to reduce wastage, improve efficiency and customer satisfaction.



Today, being an ISO 9001 certified organization and with support of many of the latest electronic measuring instruments, stringent testing and quality standards, **UNITREAD** has become the preferred OEM partner to customers in India and now working closely with many overseas OEMs.

COST EFFECTIVENESS

Continuous Improvement Programmes at every stage from cost effective component design and revisiting manufacturing processes, with emphasis on improved quality and cost control demonstrates our commitment to quality and deliver products at affordable prices to our customers to improve ours and our customer's profitability.



CUSTOMER SUPPORT

A dedicated team supported by application engineers are available to our customers, ably supported by stocks and fast logistics to ensure smooth delivery.

UNITED TYREKRAFTS PVT. LTD.

www.unitread.co.in