



Introduction

- ▶ WANJIE company was founded in 2000 and specializes in the production of terminal blocks and solderless breadboard.
- ▶ In 2002, passed the ISO9001:2008, ISO14001 quality management system.
- ▶ In 2005, first parts approved by UL .
- ▶ In 2005, Founded the R & D center, and automatic assembling workshop.
- ▶ In 2007, approved by CQC, TUV,CE,CUL.
- ▶ In 2010,passed the ISO9001:2008 quality management system.
- ▶ In 2010, Approved by VDE, and will apply more codes in 2013.

Introduction

- ▶ Factory Size, 15000 M2, Warehouse Size, 3000 M2
- ▶ Production Lines: 8 lines
- ▶ Production Staff: 385
- ▶ QC Staff: 20
- ▶ R&D Staff: 15

Products

Terminal Blocks

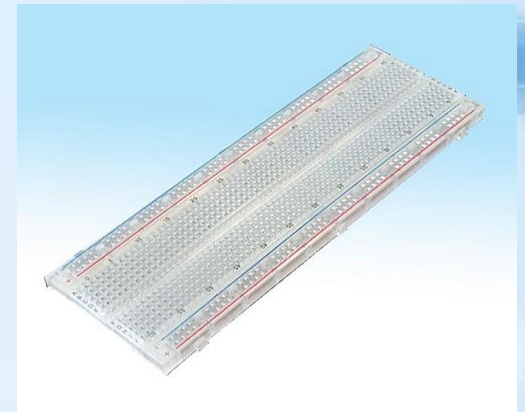
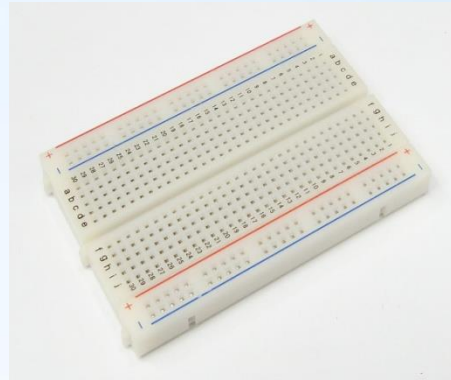
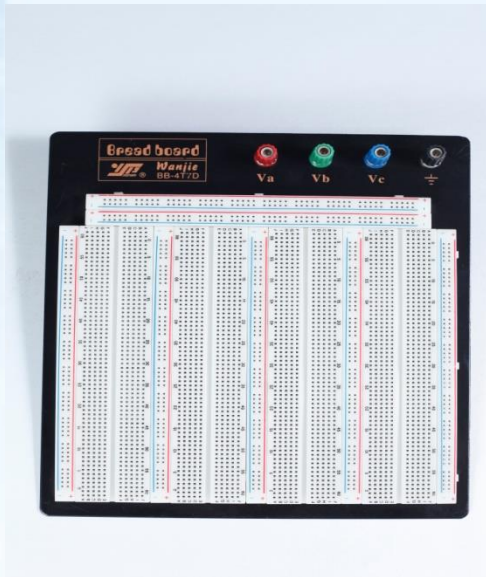
1, Including screw, pluggable, barrier, screwless, feed through, din rail terminal blocks etc.

2, six series, more than 400 varieties products



Products

- ▶ **Solderless Breadboard**
More than 40 varieties



Certification

ISO9001



UL/CUL



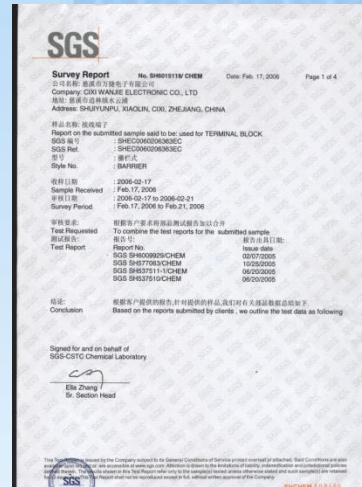
CE



TUV



ROHS



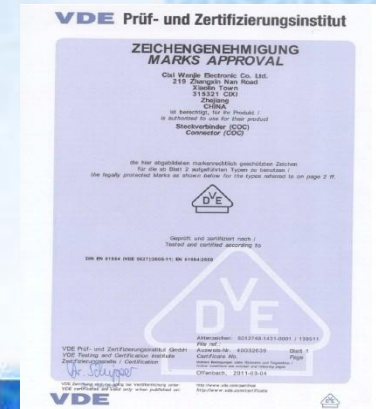
CB



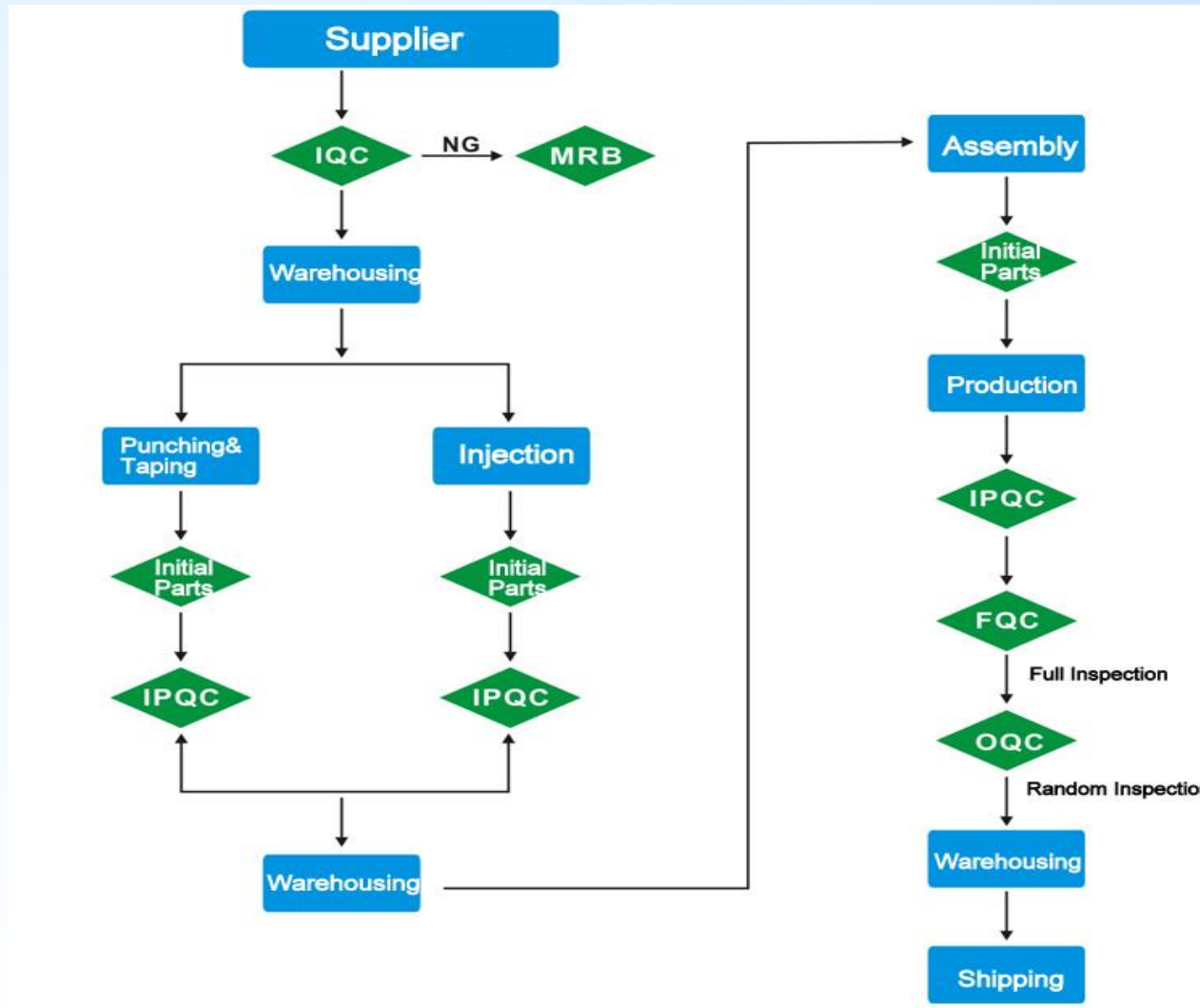
CQC



VDE



Production Process



Production Machine

- ▶ Hardware Components
- ▶ 18 units



Plastic Injection

▶ 36 units



Production Line

▶ Assemble Workshop



▶ Production Capacity Fifty million poles/month

Test Device

- ▶ Salt Spray Test
- ▶ Digital Image Measuring Instrument
- ▶ Temperature Rise Test



Test Device

- ▶ Withstanding Voltage Test
- ▶ Insulation Resistance Test
- ▶ Ball Pressure Test



Test Device

▶ RoHS Test



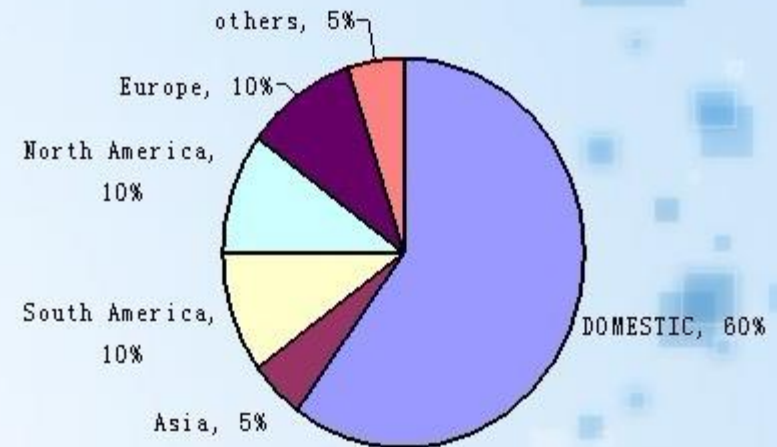
▶ Drum Drop Test



Sales

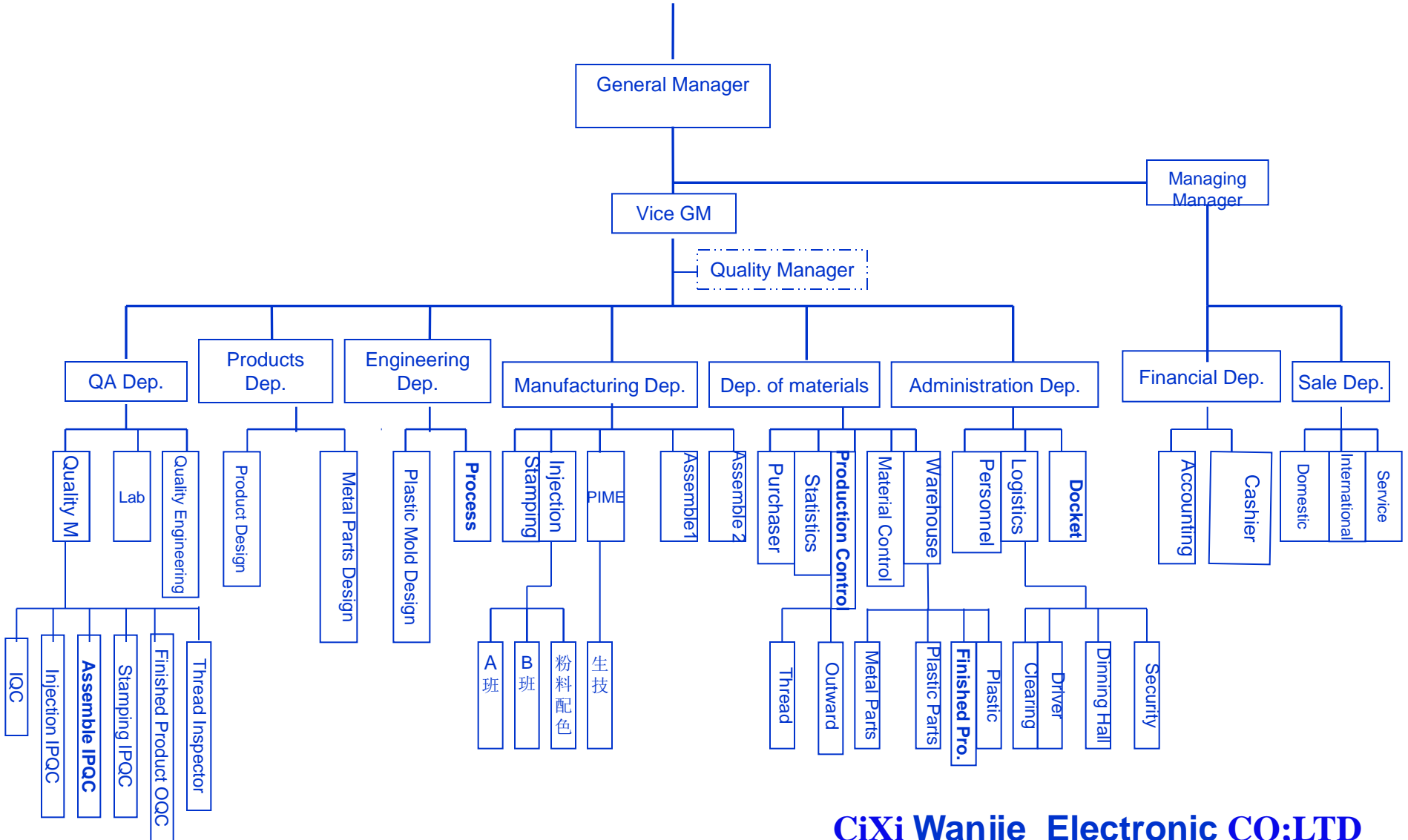
► Market

**Domestic 60%,
Export 40%**





WANJIE Structure



Contact Information

Contact: Felix Qian

Tell: 086+574+63510582

Fax: 086+574+63510580

Email: sales@china-wj.com

Website: <http://www.china-wj.cm>

Company: Cixi Wanjie Electronic Co., Ltd

Address: No. 219, Zhangxin South Rd, Xiaolin Town, Cixi, Ningbo,
Zhejiang, China, 315321