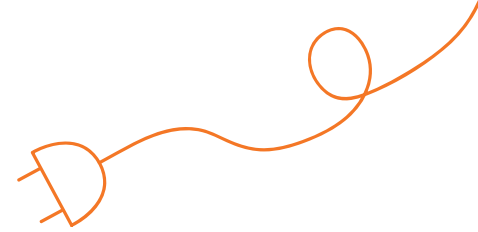




# **GREATER EFFICIENCY** **IN PRODUCTION - LOWER ENERGY COSTS**

With energy management software from ccc



## ABOUT US

### WHO WE ARE

The ccc software GmbH is a medium-sized company in the best sense. We are large enough to implement complex projects, and simultaneously small enough to respond quickly and flexibly to the needs of our customers. The facts speak for themselves: 25 years of successful business activities and a large number of customers who have trusted us for many years.

Based in Leipzig, we serve customers all over Germany - and even beyond. Our software can be used in all manufacturing companies. Since 1990, we have acquired specialised know-how in the fields of metal and glass processing, the food industry and suppliers for the automotive industry.

## OUR SOFTWARE

### FOCUS ON ENERGY CONSUMPTION

You know how much energy your company consumes overall. We know you have already taken action to reduce your consumption. How effective were these measures? Were you able to precisely identify which production step or machine consumed which amount energy?

**With our energy management software, you can:**

- energetically evaluate the products and their production process
- optimise the set-up times for product changes
- determine the success of completed energy-saving measures
- analyse the energetical connections in the production process

**The best part:** all relevant data is available with the push of a button. The data is processed in a way that provides valuable information for a wide range of departments in your company:

- for technical management, the processes can be adjusted to find the most efficient working methods
- for energy management, energy consumption can be controlled and the production can be optimised
- for the controlling department, exact product pricing and comprehensive reporting is possible
- for the purchasing department, a realistic determination of the needs allows for appropriate energy purchasing

### ENERGY SAVINGS THANKS TO PROCESS-SPECIFIC VALUES

Detailed consumption data is necessary for determining efficient energy usage. This is especially important when peak and base loads need to be reduced. ccc's energy management software provides an accurate analysis of the energy input on the product and process level, which means you receive energy data for each point of consumption. You know exactly which machine consumes how much energy at each point during the production process. Thanks to this valid and complete data, you are able to optimise energy usage at all consumption points.

### OUR MISSION

- 01** We take the time and provide detailed analysis and consultation. Subsequently, proven modules are compiled according to your requirements and receive an individual fine-tuning.
- 02** We understand your business and your requirements. Therefore, our employees are able to advise and help you to develop the best possible solution for your unique requirements.

We listen.  
We understand.  
We advise.  
We take action.

We achieve the best solution  
for you.



# WHAT DOES OUR SOFTWARE DO?

## DATA COLLECTION

The more detailed the analysis, the more effective the downstream measures. **Therefore, all automatic meters and counters which are manually recorded will be integrated into data collection.** If physical measuring devices are not available, they can be supplemented by virtual metering points.

The energy consumption and performance values are seamlessly recorded across all relevant mediums - electricity, gas, compressed air, steam, heat, oil, water. All of the meter data is centrally managed and clearly documented.

**We connect this energy consumption data with your company's production data.** Our software is integrated into the existing production management system (MES) or is directly linked to the control systems of the machines and sensor systems.

This allows machine signals and process data to be used for the software. Important manufacturing data, such as the processed orders, times, quality and material enable integrative reviewing.



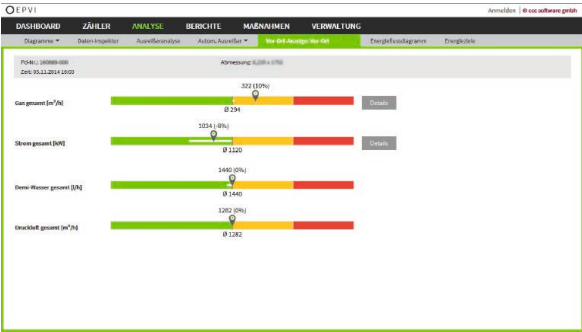
## DATA ANALYSIS

The collected data is now ready for exact evaluation - anytime and anywhere, thanks to our web solution. The software enables you to energetically analyse, monitor and optimize your production processes. You receive:

- load cycles and energy consumption curves in real time, in combination with production data
- ad hoc analysis, reports and energy indices with our „data inspector“
- a cause analysis of energetic outliers
- the energy value of a single product or workflow as the basis for the Energy Footprint
- a warning system to meet defined limit values
- an energy flowchart for all consumers
- an overview of energy efficiency measures and their impact
- a comparison of different plants and sites in according to their energy efficiency
- the current status of your energy saving goals



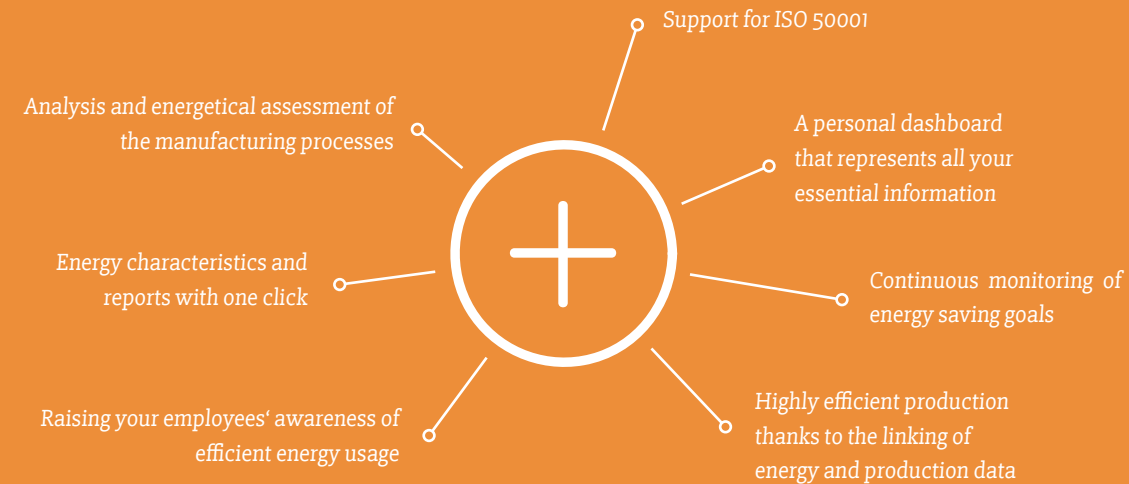
Load curves and energy consumption curves - clearly combined with the corresponding production data.



Monitoring the current energy values: the production process can be evaluated energetically with a single glance.

# YOUR BENEFITS AT A GLANCE

Our energy management software allows you to use energy more efficiently. We offer you:



Thanks to ccc software gmbh, data analysis isn't based on past values anymore. With the help of our new energy management software from ccc, it is now possible to monitor our large consumers at any time and to operate an effective load and key figure management!

**STEPHANIE KRAKE**

EHS | Manager Environment, Health & Safety  
KREMPEL GmbH

**SVEN HENNEMANN**

Manager of Energy and Production Engineering  
Kamps GmbH

We chose ccc's energy management software because the system is easy to use and can be used by anyone. The system has a very high acceptance due to its simplicity and clarity. The software is also very practical and user-oriented and the support is very good.

# YOUR CONTACT PERSON



## FEEL FREE TO CONTACT US

Are you interested in learning more about our company and the solutions we offer?

We will be happy to make an appointment with you to discuss your requirements and advise you on the best solution for you.

**MARCO PETERSOHN**

Master of Arts  
IT Project Manager



**PHONE**

+49 (341) 30548 - 43



**MAIL**

m.petersohn@ccc-software.de



**ccc software gmbh**

Mozartstr. 3  
D-04107 Leipzig  
GERMANY

Telefon +49 (341) 30548 - 30  
Mail [contact@ccc-software.de](mailto:contact@ccc-software.de)  
Web [www.ccc-industriesoftware.de](http://www.ccc-industriesoftware.de)