



Possible applications

- synthetic materials
- surface finishing
- micro inscription
- deep inscription
- deep engraving
- colour change
- metals
- wood
- foils

SERIES BL2000

The table laser **Baublys BL2000** has a state of the art fiber laser with a long operating life available. It is equipped on a very compact space with the same effective technology as our industrial marking and engraving systems.

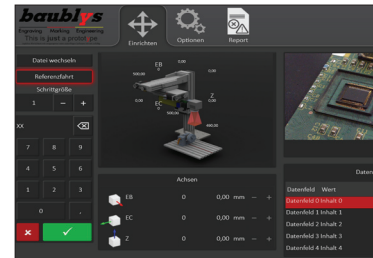
The Baublys system software is easy to operate, flexible and offers the optimal solution for top quality markings on different materials (plastics, composite materials, ceramics, metal and more) at best price/performance ratio.

BL 2000 is maintenance-free and demands only an usual 230 volt outlet.

SERIES BL2000

HMI Interface

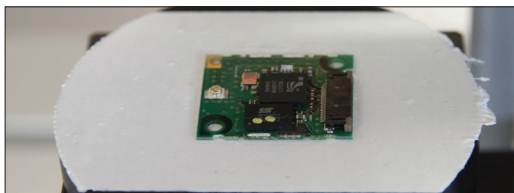
Complete new designed and developed HMI-operating system with touch screen. Control and programming software is based on Windows 7 / Windows 10. Long standing experience in the application of engraving and marking ensures intuitive and simple programming.



Product specification

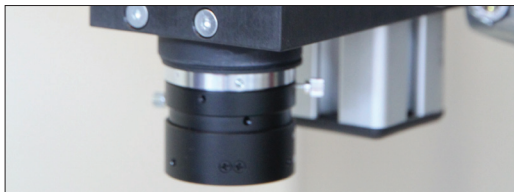
Laser type	Ytterbium fibre laser
Wave length	1064 nm
Pulse rate	20 - 200 kHz
Power	10 - 100 W
Inscription area	max. 180 x 180 mm
Control	CNC control
System software	Windows 7 / Windows 10
Measurements	800 x 600 x 900 mm (L x W x H)
Network connection	Yes

Options



Professional sample holder

For professional positioning and calibration of the work piece.



Camera systems

Different camera systems according to the demands of customers application available.



Exhaust system

Powerful device for extraction of fume and dust.



Optical characteristics

Different versions make it possible to adapt inscription areas and quality.

Further options

- Customized systems
- Software options
- Motorized sample holder
- Interfaces

