



## AGRICULTURAL CHAIN



## E 农机链 AGRICULTURAL CHAIN

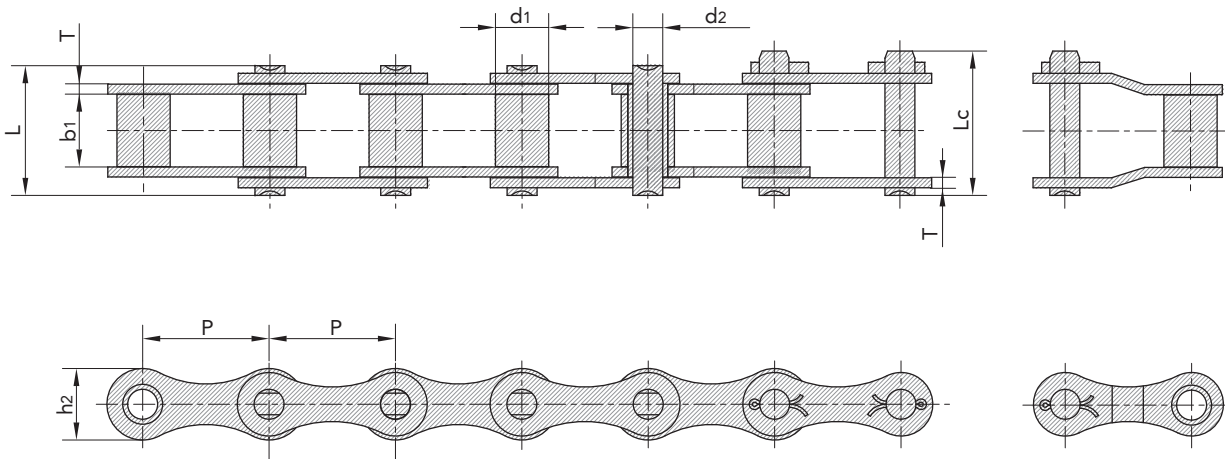
139	ZGS38联合收割机链及附件	139	ZGS38 combine chain with attachments
140/141	ZGS38联合收割机链及附件	140/141	ZGS38 combine chain with attachments
142/143	S型钢制农机链	142/143	S type Steel Agricultural Chain
144/150	S型钢制农机链附件	144/150	S type steel agricultural chain attachments
151	A型钢制农机链	151	A type steel agricultural chain
152/153	CA型钢制农机链	152/153	CA type steel agricultural chain
154	特殊农机链及附件	154	Special agricultural chain & Attachments
155/174	C型钢制农机链附件	155/174	C type steel agricultural chain attachments



## ZGS38联合收割机链及附件 ZGS38 combine chain with attachments

ZGS38联合收割机链及附件 ZGS38 combine chain with attachments

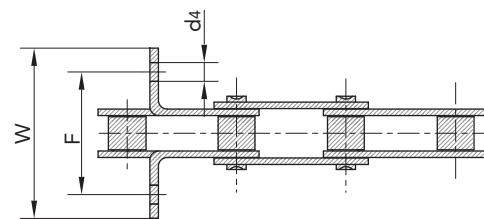
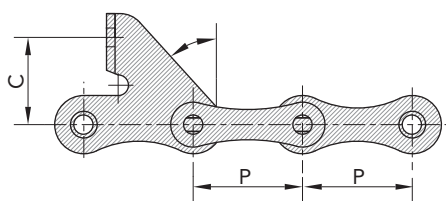
链号 SFR	节距 Pitch	滚子直径 Roller diameter	内节内宽 Width between inner plates	销轴直径 Pin diameter	销轴长度 Pin length		内链板高度 Innerplate depth	链板厚度 Plate thickness	极限拉伸载荷 Ultimate tensile strength	平均拉伸载荷 Average tensile strength	每米长重 Weight per meter
SFR Chain No.	P	d1 max	b1 min	d2 max	L max	Lc max	h2 max	T max	Q min	Q0	q
	mm	mm	mm	mm	mm	mm	mm	mm	kN/lbf	kN	kg/m
ZGS38	38.0	16.0	22.00	9.0	39.0	43.0	21.5	3.0	40.0/9091	55.3	2.00



## ZGS38联合收割机链及附件 ZGS38 combine chain with attachments

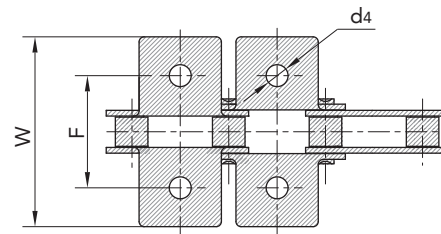
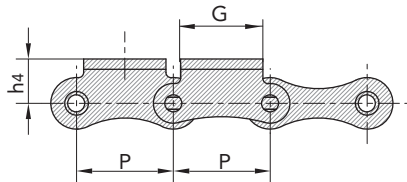
ZGS38联合收割机链及附件 ZGS38 combine chain with attachments

链号 SFR	P	C	F	W		d4
SFR Chain No.	mm	mm	mm	mm	mm	mm
ZGS38F3	38.0	30.0	52.0	68.4	43.5°	6.5



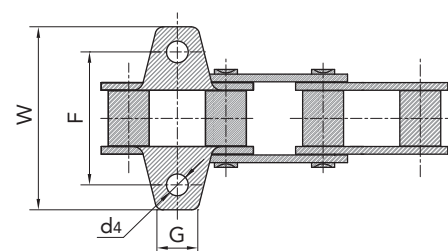
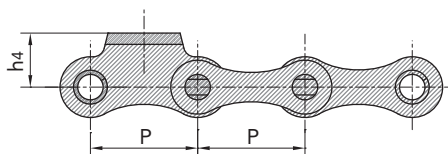
ZGS38联合收割机链及附件 ZGS38 combine chain with attachments

链号 SFR	P	G	F	W	h4	d4
SFR Chain No.	mm	mm	mm	mm	mm	mm
ZGS38K1	38.0	32.0	53.0	93.2	20.0	8.5



ZGS38联合收割机链及附件 ZGS38 combine chain with attachments

链号 SFR	P	G	F	W	h4	d4
SFR Chain No.	mm	mm	mm	mm	mm	mm
ZGS38K1F1	38.0	16.0	52.0	71.5	19.6	11.0
ZGS38K1F2	38.0	16.0	52.0	74.6	19.6	8.5
ZGS38K1F3	38.0	20.0	52.0	72.0	17.0	8.4



传动链  
Driving Chain

电引链  
Hoisting Chain

输送链  
Conveyor Chain

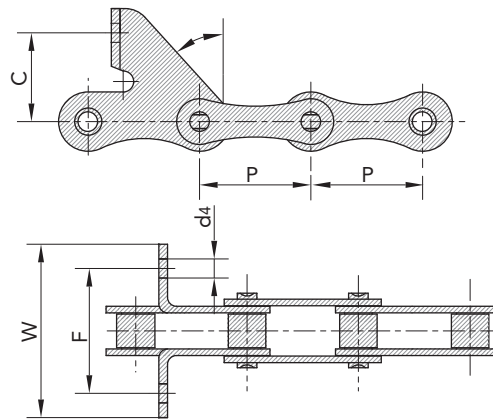
不锈钢链  
Stainless Steel Chain

农机链  
Agricultural Chain

## ZGS38联合收割机链及附件 ZGS38 combine chain with attachments

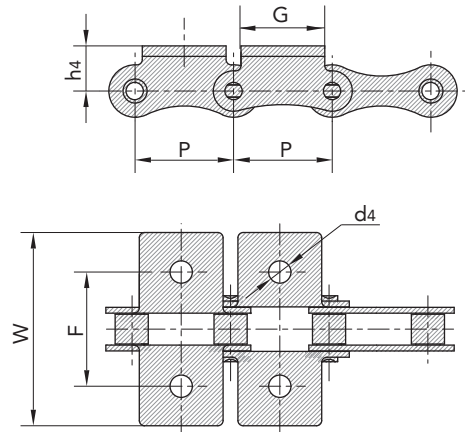
ZGS38联合收割机链及附件 ZGS38 combine chain with attachments

链号	P	C	F	W		d4
Chain No.	mm	mm	mm	mm	mm	mm
ZGS38F3	38.0	30.0	52.0	68.4	43.5°	6.5



ZGS38联合收割机链及附件 ZGS38 combine chain with attachments

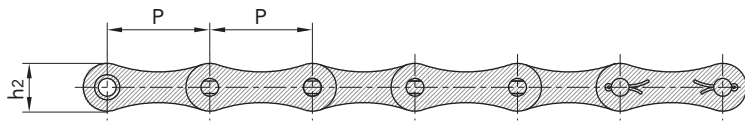
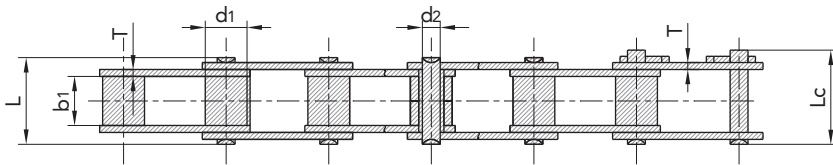
链号	P	G	F	W	h4	d4
Chain No.	mm	mm	mm	mm	mm	mm
ZGS38K1	38.0	32.0	53.0	93.2	20.0	8.5



## S型钢制农机链 S type steel agricultural chain

S型钢制农机链 S type steel agricultural chain

链号 SFR	节距 Pitch	滚子直径 Roller diameter	内节内宽 Width between inner plates	销轴直径 Pin diameter	销轴长度 Pin length		内链板高度 Inner plate depth	链板厚度 Plate thickness	极限拉伸载荷 Ultimate tensile strength	平均拉伸载荷 Average tensile strength	每米长重 Weight per meter
SFR Chain No.	P	d <sub>1</sub> max	b <sub>1</sub> min	d <sub>2</sub> max	L max	Lc max	h <sub>2</sub> max	T max	Q min	Q0	q
	mm	mm	mm	mm	mm	mm	mm	mm	kN/LB	kN	kg/m
S32	29.21	11.43	15.88	4.45	26.6	28.5	13.5	1.8	8.0/1818	21.6	0.86
S32V	29.21	11.43	15.88	5.08	27.3	29.7	13.5	2.1	25.0/5680	27.0	0.96
S42	34.93	14.27	19.05	7.00	34.3	37.4	19.8	2.8	27.0/6136	50.8	1.60
S45	41.40	15.24	22.23	5.72	37.7	40.3	17.3	2.8	18.0/4091	36.1	1.66
S45R	41.40	15.24	22.23	7.16	38.7	41.6	17.3	3.0	35.5/8068	40.1	1.70
S51	38.10	15.24	16.00	5.72	31.1	33.7	17.3	2.8	28.0/6364	30.8	1.48
S52L	38.10	15.24	16.40	5.72	31.1	33.7	17.3	2.5	25.5/6636	32.2	1.36
S52	38.10	15.24	22.23	5.72	37.7	40.3	17.3	2.8	18.0/4091	36.1	1.68
S55V	41.40	17.78	22.60	8.28	39.0	41.9	20.0	3.0	42.0/9546	45.0	2.22
S55	41.40	17.78	22.23	5.72	37.7	40.3	17.3	2.8	18.0/4091	36.1	1.80
S55R	41.40	17.78	22.23	8.90	41.0	44.0	22.4	3.5	45.0/10227	73.1	2.49
S55RH	41.40	17.78	22.23	5.90	43.2	46.3	22.4	4.0	65.0/14772	84.5	2.74
S62	41.91	19.05	26.20	5.72	40.3	43.0	17.3	2.5	26.7/6067	36.1	1.87
S77	58.34	18.26	22.23	8.90	43.2	46.4	26.2	4.0	45.0/10227	73.1	2.66
S88	66.27	22.86	28.58	8.90	49.8	53.0	26.2	4.0	45.0/10227	73.1	3.25
CA642	41.40	15.88	19.05	8.28	36.1	39.1	21.2	3.0	50.0/11363	55.0	1.98
CA643	41.40	15.88	22.20	8.28	41.0	44.1	21.2	4.0/3.0	60.0/13635	75.0	2.42



传动链  
Driving Chain

电引链  
Hoisting Chain

输送链  
Conveyor Chain

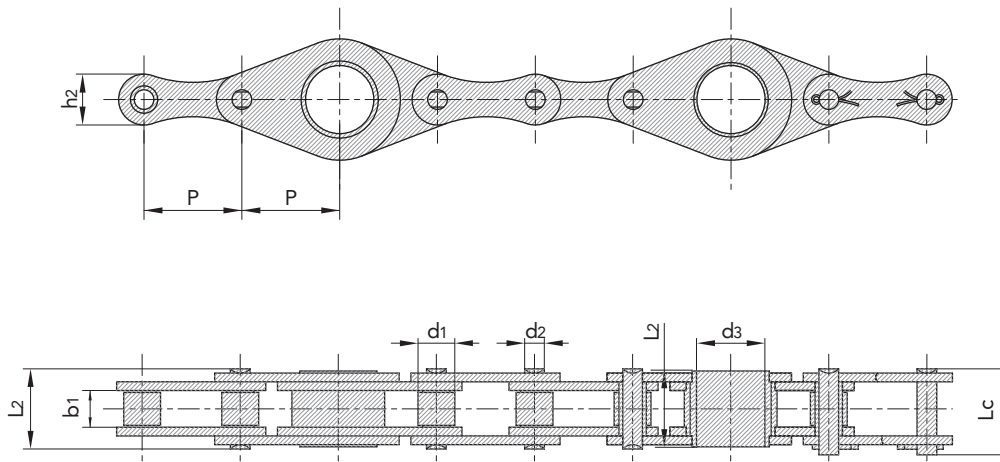
不锈钢链  
Stainless Steel Chain

农机链  
Agricultural Chain

## S型钢制农机链 S type steel agricultural chain

S型钢制农机链 S type steel agricultural chain

链号 SFR	节距 Pitch	滚子直径 Roller diameter	内节内宽 Width between inner plates	销轴直径 Pin diameter	空心销轴内径 Hollow pin inner diameter	销轴长度 Pin length			内链板高度 Inner plate depth	极限拉伸载荷 Ultimate tensile strength	平均拉伸载荷 Average tensile strength
SFR Chain No.	P	d1 max	b1 min	d2 max	d3 min	L max	L2 max	Lc max	T max	Q min	Q0
	mm	mm	mm	mm	mm	mm	mm	mm	mm	kN/lbf	kN
CA650	50.8	19.05	19.05	10.19	35.4	41.5	38.0	44.5	26.4	70.8	99.0



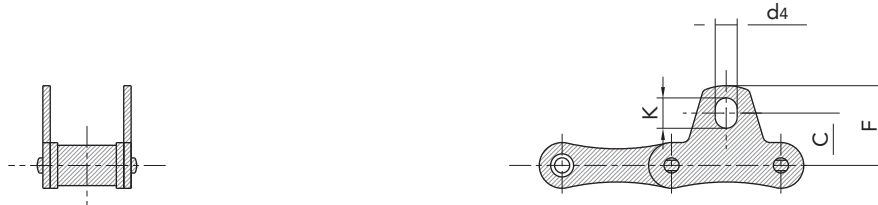


## S型钢制农机链附件 S type steel agricultural chain attachments

S型钢制农机链附件 S type steel agricultural chain attachments

附件号 SFR	链号 SFR	C	F	d4	K
SFR Att. No.	SFR Chain No.	mm	mm	mm	mm
SK1	S32	17.3	26.2	5.3	6.9
SK1	S42	23.6	34.3	8.3	11.5
SK1	S45	19.8	30.2	8.3	11.5
SK1	S52	22.1	31.8	8.3	9.9
SK1	S55	19.8	30.2	8.3	11.5
SK1	S62	24.6	38.6	8.3	14.7
SK1	S77	36.3	50.0	8.3	11.5
SK1	S88	43.7	55.6	8.3	9.9

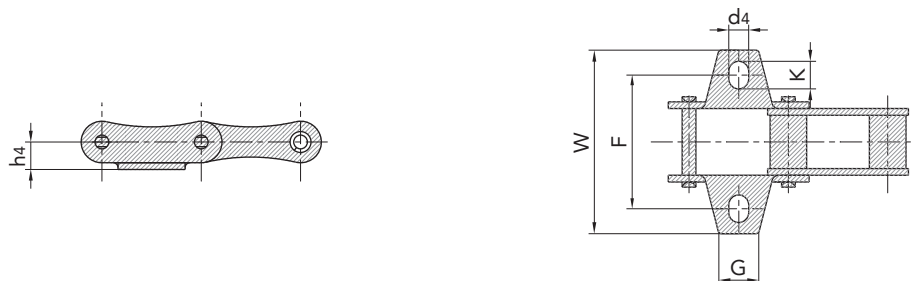
SK1



S型钢制农机链附件 S type steel agricultural chain attachments

附件号 SFR	链号 SFR	G	F	W	h4	d4	K
SFR Att. No.	SFR Chain No.	mm	mm	mm	mm	mm	mm
K1	S32	15.0	42.9	61.0	8.6	5.3	6.9
K1	S42	17.5	54.00	74.9	14.0	8.3	11.5
K1	S45	22.0	54.00	74.9	11.4	8.3	11.5
K1	S51	19.0	49.80	71.5	11.4	8.3	9.9
K1	S52	19.0	58.75	77.5	11.4	8.3	9.9
K1	S55	22.0	54.00	74.9	11.4	8.3	11.5
K1	S62	22.0	6.65	95.3	11.4	8.3	14.7
K1	S77	25.0	76.2	101.6	20.8	8.3	11.5
K1	S88	22.0	96.85	119.4	20.8	8.3	9.9

K1



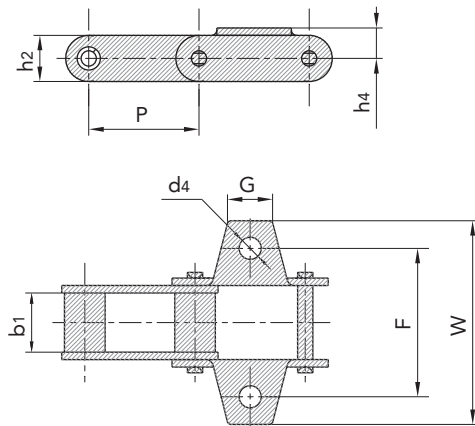


## S型钢制农机链附件 S type steel agricultural chain attachments

S型钢制农机链附件 S type steel agricultural chain attachments

附件号 SFR	链号 SFR	P	b1	G	F	W	h4	d4	h2
SFR Att. No.	SFR Chain No.	mm	mm	mm	mm	mm	mm	mm	mm
K1	S52F1	38.4	18.5	23.0	57.5	80.0	16.0	9.0	17.3

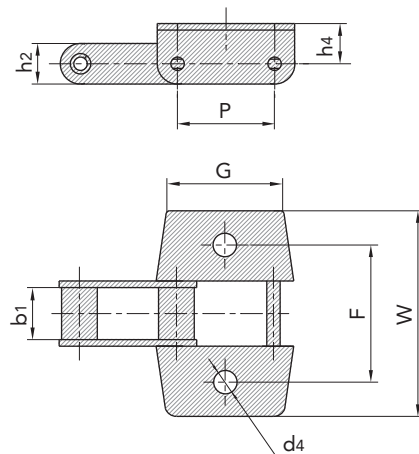
K1



S型钢制农机链附件 S type steel agricultural chain attachments

附件号 SFR	链号 SFR	P	b1	G	F	W	h4	d4	h2
SFR Att. No.	SFR Chain No.	mm	mm	mm	mm	mm	mm	mm	mm
K1	S52F2	38.4	18.5	39.0	57.0	80.0	16.0	10.5	17.3

K1

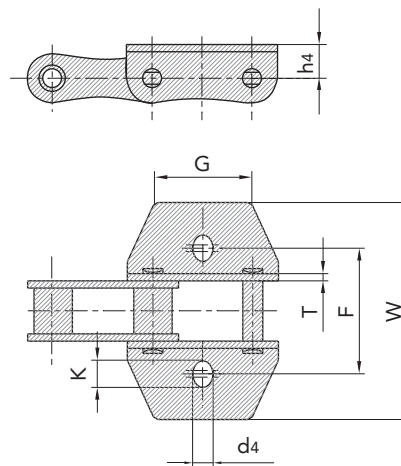


## S型钢制农机链附件 S type steel agricultural chain attachments

S型钢制农机链附件 S type steel agricultural chain attachments

附件号 SFR	链号 SFR	G	F	W	d4	K	h4	T
SFR Att. No.	SFR Chain No.	mm	mm	mm	mm	mm	mm	mm
K1	CA642	40.0	53.0	91.0	8.5	11.25	14.0	3.0

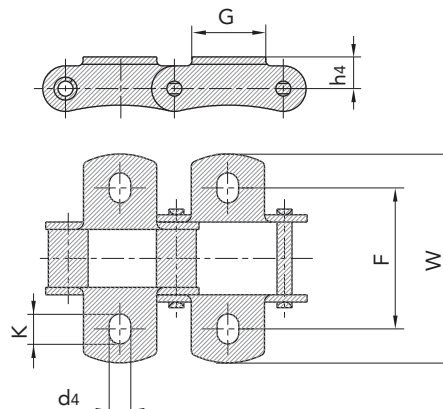
K1



S型钢制农机链附件 S type steel agricultural chain attachments

附件号 SFR	链号 SFR	G	F	W	h4	d4	K
SFR Att. No.	SFR Chain No.	mm	mm	mm	mm	mm	mm
K1	S55R	25.0	63.6	90.4	15.5	8.6	12.0
K1	S55RH	25.0	63.6	90.4	15.5	8.6	12.0

K1



传动链  
Driving Chain

电引链  
Hoisting Chain

输送链  
Conveyor Chain

不锈钢链  
Stainless Steel Chain

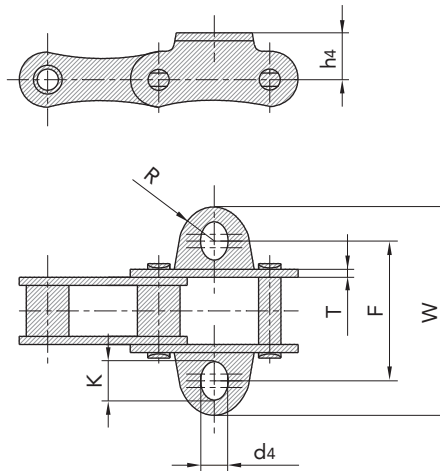
农机链  
Agricultural Chain

## S型钢制农机链附件 S type steel agricultural chain attachments

S型钢制农机链附件 S type steel agricultural chain attachments

附件号 SFR	链号 SFR	R	F	W	d4	K	h4	T
SFR Att. No.	SFR Chain No.	mm	mm	mm	mm	mm	mm	mm
K1F1	S32	10.0	43.0	63.0	6.5	8.0	8.7	1.8

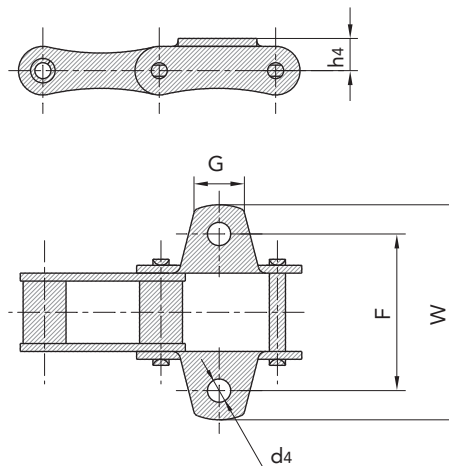
K1F1



S型钢制农机链附件 S type steel agricultural chain attachments

附件号 SFR	链号 SFR	G	F	W	h4	d4
SFR Att. No.	SFR Chain No.	mm	mm	mm	mm	mm
K1F1	S55	21.2	55.9	74.64	11.0	10.0

K1F1

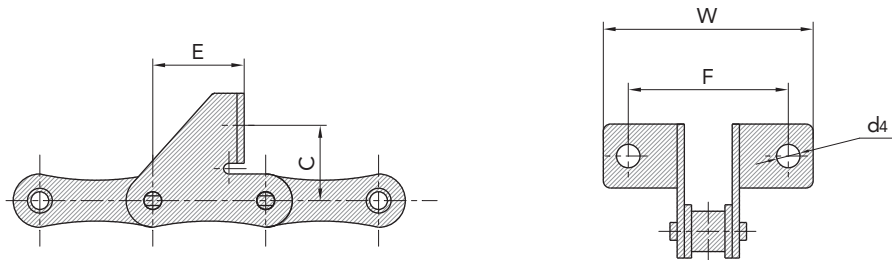


## S型钢制农机链附件 S type steel agricultural chain attachments

S型钢制农机链附件 S type steel agricultural chain attachments

附件号 SFR	链号 SFR	C	E	F	W	d4
SFR Att. No.	SFR Chain No.	mm	mm	mm	mm	mm
SD	S32	20.0	19.2	58.0	78.0	5.3
F1	S45	21.0	28.5	62.4	83.4	8.5
AF2	S51	19.5	23.0	55.3	70.5	6.4
SD	S52	20.0	19.2	62.0	88.5	6.4
SD	S52L	20.0	17.5	54.5	71.0	6.5
F4	S55	20.0	37.0	58.0	87.0	6.8

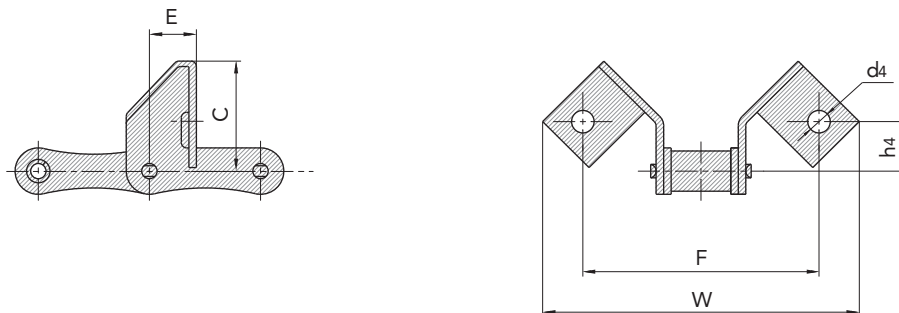
SD, F1, F2, F4



S型钢制农机链附件 S type steel agricultural chain attachments

附件号 SFR	链号 SFR	G	F	W	h4	d4	K
SFR Att. No.	SFR Chain No.	mm	mm	mm	mm	mm	mm
F1	55V	40.0	25.0	88.0	118.0	18.0	8.4

F1

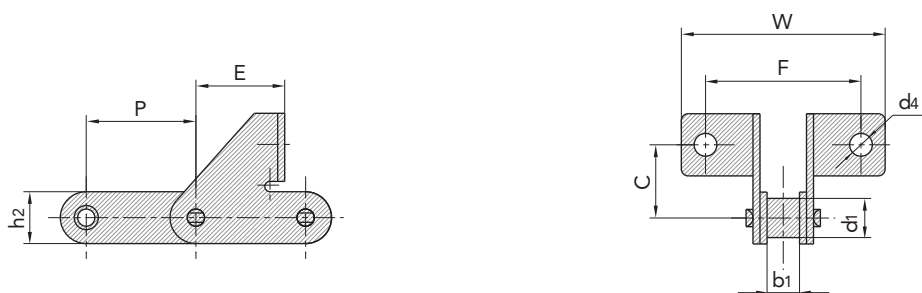


## S型钢制农机链附件 S type steel agricultural chain attachments

S型钢制农机链附件 S type steel agricultural chain attachments

附件号 SFR	链号 SFR	P	d1	b1	C	E	F	W	d4	h2
SFR Att. No.	SFR Chain No.	mm	mm	mm	mm	mm	mm	mm	mm	mm
K3	S52	38.4	15.88	18.5	24.0	37.4	52.0	73.0	9.0	17.3

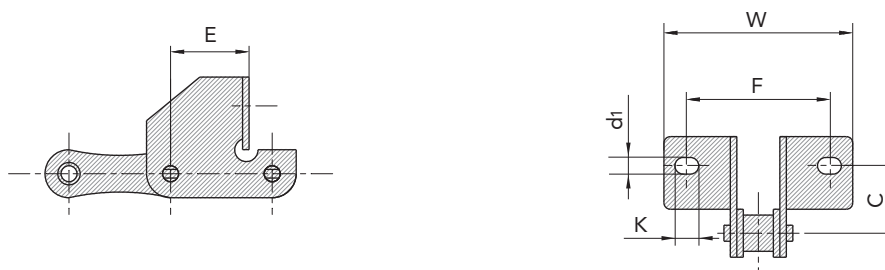
K3



S型钢制农机链附件 S type steel agricultural chain attachments

附件号 SFR	链号 SFR	C	E	F	W	d4	K
SFR Att. No.	SFR Chain No.	mm	mm	mm	mm	mm	mm
F1	S55	19.0	31.9	62.0	89.2	8.3	8.3
SD	S55R	19.0	31.9	62.0	89.2	8.3	8.3
F1	S45R	17.5	31.9	62.0	93.0	8.3	9.2

F1  
SD

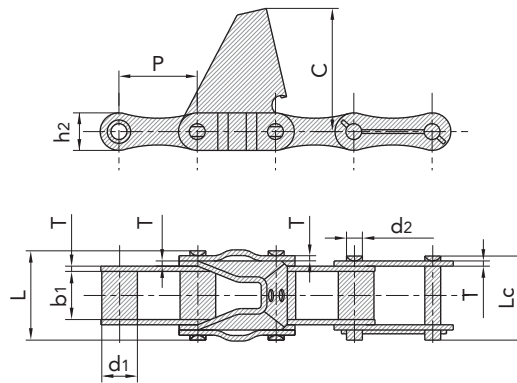


## S型钢制农机链附件 S type steel agricultural chain attachments

S型钢制农机链附件 S type steel agricultural chain attachments

附件 SFR	链号 SFR	节距 Pitch	滚子直径 Roller diameter	内节内宽 Width between inner plates	销轴直径 Pin diameter	销轴长度 Pin length		链板尺寸 Plate dimension			极限拉伸载荷 Ultimate tensile strength	平均拉伸载荷 Average tensile strength
SFR Att. No.	SFR Chain No.	P	d1 max	b1 min	d2 max	L max	Lc max	h2 max	t/T max	C	Q min	Q0
		mm	mm	mm	mm	mm	mm	mm	mm	mm	kN/lbf	kN
C6E	S62R	41.91	19.05	25.8	8.5	47.8	44.6	20.1	2.8/3.0	66.0	42.0/9448	43.7

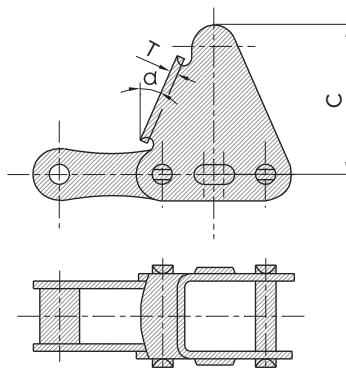
C6E



S型钢制农机链附件 S type steel agricultural chain attachments

附件号 SFR	链号 SFR		C	T
SFR Att. No.	SFR Chain No.		mm	mm
TM77	CA643	28°	60.35	3.10

TM77



传动链  
Driving Chain

电引链  
Hoisting Chain

输送链  
Conveyor Chain

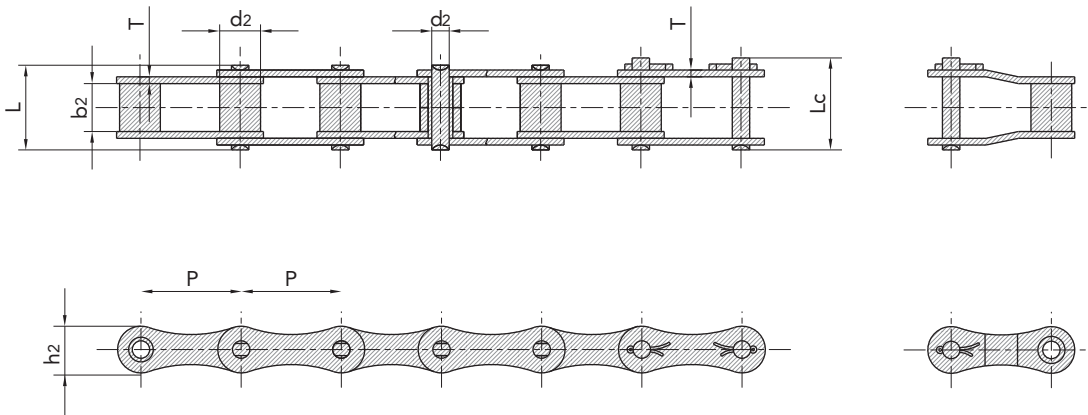
不锈钢链  
Stainless Steel Chain

农机链  
Agricultural Chain

## S型钢制农机链附件 S type steel agricultural chain attachments

S型钢制农机链附件 S type steel agricultural chain attachments

链号 SFR	节距 Pitch	滚子直径 Roller diameter	内节内宽 Width between inner plates	销轴直径 Pin diameter	销轴长度 Pin length		链板尺寸 Plate dimension		极限拉伸载荷 Ultimate tensile strength	平均拉伸载荷 Average tensile strength	每米长重 Weight per meter
SFR Chain No.	P	d <sub>1</sub> max	b <sub>1</sub> min	d <sub>2</sub> max	L max	L <sub>c</sub> max	h <sub>2</sub> max	T max	Q min	Q <sub>0</sub>	q
	mm	mm	mm	mm	mm	mm	mm	mm	kN/lbf	kN	kg/m
A550	41.40	16.87	19.81	7.19	35.0	38.0	19.3	2.80	39.10/8886	51.2	1.79
A555	41.40	16.87	12.70	7.19	29.1	32.0	19.3	3.10	36.10/8886	56.0	1.60
A557	41.40	17.78	20.24	8.00	37.4	40.6	23.1	3.10	55.61/12639	74.3	2.45
A620	42.01	17.91	24.51	7.19	41.8	45.1	20.2	3.25	39.10/8886	55.1	2.18
CA413	41.30	16.00	22.23	8.28	39.0	41.9	23.5	3.00	50/11363	71.5	2.27

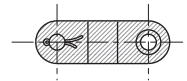
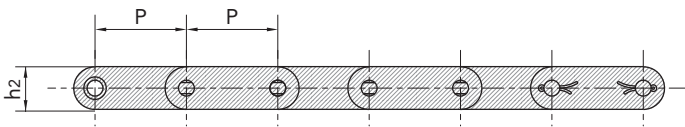
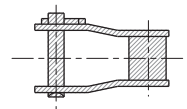
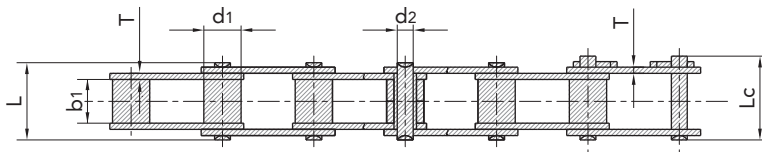




## CA型钢制农机链 CA type steel agricultural chain

CA型钢制农机链 CA type steel agricultural chain

链号 SFR	节距 Pitch	滚子直径 Roller diameter	内节内宽 Width between inner plates	销轴直径 Pin diameter	销轴长度 Pin length		链板尺寸 Plate dimension		极限拉伸载荷 Ultimate tensile strength	平均拉伸载荷 Average tensile strength	每米长重 Weight per meter
SFR Chain No.	P	d <sub>1</sub> max	b <sub>1</sub> min	d <sub>2</sub> max	L max	L <sub>c</sub> max	h <sub>2</sub> max	T max	Q min	Q <sub>0</sub>	q
	mm	mm	mm	mm	mm	mm	mm	mm	kN/lbf	kN	kg/m
CA550	41.40	16.87	19.81	7.19	35.0	38.0	19.30	2.80	39.10/8886	51.2	1.94
CA555V	41.40	16.80	19.05	8.28	36.1	39.1	22.00	3.00	55.00/12499	68.7	2.24
CA555	41.40	16.87	12.70	7.19	29.1	32.0	19.30	3.10	39.10/8886	56.0	1.72
CA557	41.40	17.78	20.24	8.00	37.4	40.6	23.10	3.10	55.61/12639	74.3	2.60
CA620	42.01	17.91	24.51	7.19	41.8	45.2	20.20	3.25	39.10/8886	55.1	2.35
CA2060H	38.10	11.91	12.70	5.94	29.2	31.6	18.00	3.25	31.10/6996	40.5	1.45
CA2063H	38.10	11.89	12.70	5.94	29.4	34.2	19.30	3.25	31.28/71.9	40.5	1.65
CAE44151	28.575	15.88	16.20	7.92	33.5	36.9	22.20	3.25	58.80/13363	64.5	2.73
38.4R	38.40	15.88	19.05	6.92	33.4	36.3	17.30	2.50	33.00/7480	41.2	1.70
38.4V	38.40	15.88	18.00	6.92	34.8	37.8	17.30	3.00	40.00/9091	50.0	1.83
CA624	38.40	15.88	19.05	8.28	36.1	39.1	20.50	3.00	50.00/11363	62.5	2.17
S55H	41.40	17.78	22.00	9.00	39.5	43.3	23.00	3.00	55.00/12633	72.6	6.94
CA2050	31.75	10.16	9.40	5.08	20.7	22.2	15.09	2.03	22.20/5045	28.1	0.78
Ca2060	38.10	11.91	12.57	5.94	25.9	27.7	18.00	2.42	31.80/7227	36.8	1.12
CA550HD	41.40	16.66	19.48	8.28	36.8	40.3	19.81	3.10	39.11/8886	50.8	2.16
CA550R	41.40	16.87	19.80	7.19	36.3	39.3	19.30	3.10	57.70/13113	61.5	2.20



传动链  
Driving Chain

电引链  
Hoisting Chain

输送链  
Conveyor Chain

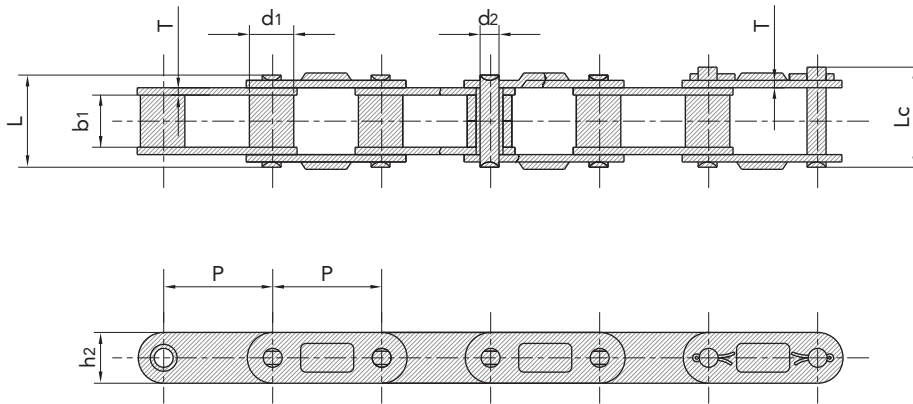
不锈钢链  
Stainless Steel Chain

农机链  
Agricultural Chain

## CA型钢制农机链 CA type steel agricultural chain

CA型钢制农机链 CA type steel agricultural chain

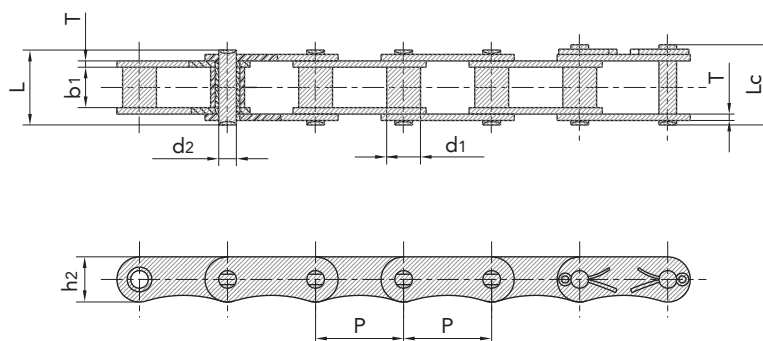
链号 SFR	节距 Pitch	滚子直径 Roller diameter	内节内宽 Width between inner plates	销轴直径 Pin diameter	销轴长度 Pin length		链板尺寸 Plate dimension		极限拉伸载荷 Ultimate tensile strength	平均拉伸载荷 Average tensile strength	每米长重 Weight per meter
SFR Chain No.	P	d <sub>1</sub> max	b <sub>1</sub> min	d <sub>2</sub> max	L max	L <sub>c</sub> max	h <sub>2</sub> max	T max	Q min	Q <sub>0</sub>	q
	mm	mm	mm	mm	mm	mm	mm	mm	kN/lbf	kN	kg/m
CA2801	30.00	15.88	19.05	8.28	36.1	39.4	20.5	3.00	50.00/11247.	55.0	2.51
CA550D	41.40	16.87	19.81	7.19	35.0	38.0	19.3	2.80	39.10/8886	51.2	1.94
CA555D	41.40	16.87	12.70	7.19	29.1	32.0	19.3	3.10	38.10/8886	56.0	1.72
CA557D	41.40	17.78	20.24	8.00	37.4	40.6	23.1	3.10	55.61/12639	74.3	2.60
CA620D	42.01	17.91	24.51	7.19	41.8	45.2	20.2	3.25	39.10/8886	55.1	2.35



## 特殊农机链及附件 Special agricultural chain & Attachments

特殊农机链及附件 Special agricultural chain & Attachments

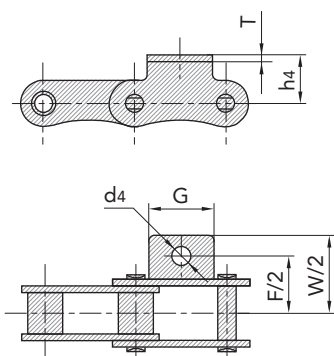
链号 SFR	节距 Pitch	滚子直径 Roller diameter	内节内宽 Width between inner plates	销轴直径 Pin diameter	销轴长度 Pin length		链板尺寸 Plate dimension		极限拉伸载荷 Ultimate tensile strength	每米长重 Weight per meter
SFR Chain No.	P	d <sub>1</sub> max	b <sub>1</sub> min	d <sub>2</sub> max	L max	L <sub>c</sub> max	h <sub>2</sub> max	T max	Q min	q
	mm	mm	mm	mm	mm	mm	mm	mm	kN/lbf	kg/m
LV40	40.00	12.00	22.00	6.00	38.10	40.50	17.50	3.00	31.4/7136	1.53



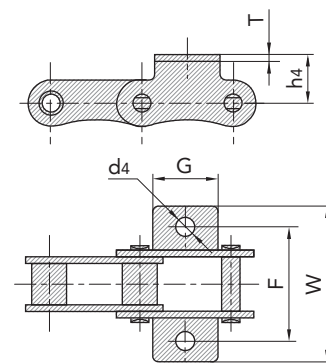
特殊农机链及附件 Special agricultural chain & Attachments

附件号 SFR		链号 SFR	G	F	W	h4	d4	T
SFR Att. No.		SFR Chain No.	mm	mm	mm	mm	mm	mm
A1	K1	LV40	33.0	50.0	69.0	17.0	8.5	3.0

A1



K1



传动链  
Driving Chain

电引链  
Hoisting Chain

输送带  
Conveyor Chain

不锈钢链  
Stainless Steel Chain

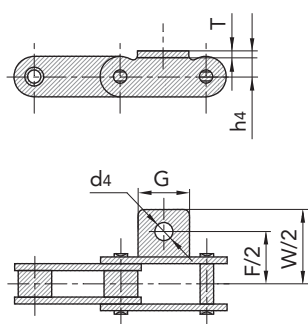
农机链  
Agricultural Chain

## C型钢制农机链附件 C type steel agricultural chain attachments

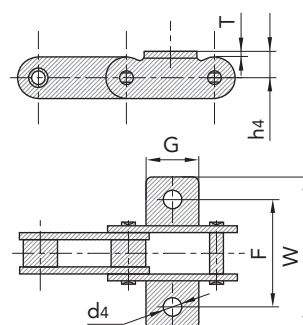
C型钢制农机链附件 C type steel agricultural chain attachments

附件号 SFR		链号 SFR	G	F	W	d4	h4	T
SFR Att. No.		SFR Chain No.	mm	mm	mm	mm	mm	mm
A1	K1	CA620	22.2	62.7	80.2	7.1	11.5	3.25
A1S	K1S	CA620	22.2	62.7	80.2	8.7	11.5	3.25

A1  
A1S



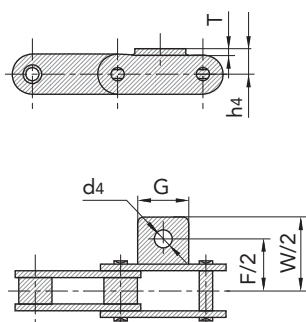
K1  
K1S



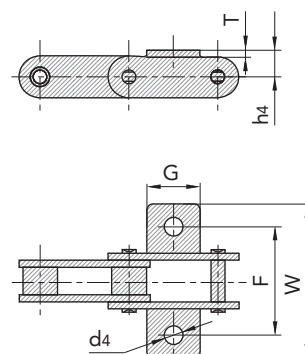
C型钢制农机链附件 C type steel agricultural chain attachments

附件号 SFR		链号 SFR	G	F	W	d4	h4	T
SFR Att. No.		SFR Chain No.	mm	mm	mm	mm	mm	mm
A1	K1	CA2060H	28.60	42.90	67.80	5.50	14.70	3.25
A1S	K1S	CA2060H	28.60	42.90	67.80	6.65	14.70	3.25
A11	K11	CA2060H	28.60	42.90	67.80	8.70	14.70	3.25
A4*	K4*	CA557	38.10	73.60	104.54	10.30	15.88	4.80
A19	K19	CA557	28.60	50.80	72.10	7.10	14.30	3.10
A25*	K25*	CA557	28.60	50.80	72.10	8.70	14.30	3.10
A26	K26	CA2060H	28.60	42.90	37.80	10.30	14.70	3.25

A1  
A1S  
A11  
A4  
A19  
A25  
A26



K1  
K1S  
K11  
K4  
K19  
K25  
K26

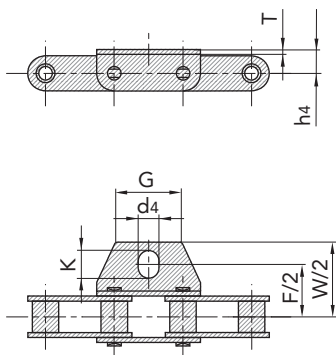


## C型钢制农机链附件 C type steel agricultural chain attachments

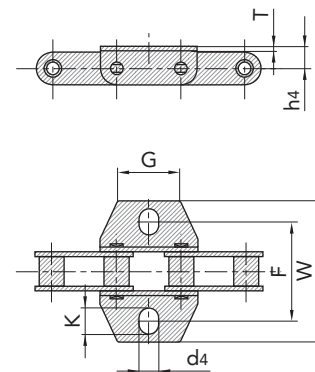
C型钢制农机链附件 C type steel agricultural chain attachments

附件号 SFR		链号 SFR	G	F	W	d4	K	h4	T
SFR Att. No.		SFR Chain No.	mm	mm	mm	mm	mm	mm	mm
A1	K1	CA624	29.0	58.0	87.0	10.5	12.50	14.0	3.0

A1



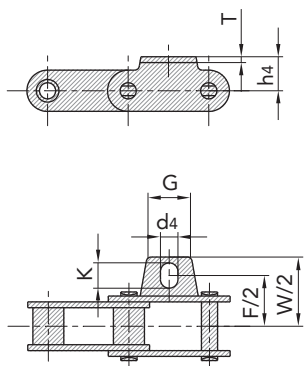
K1



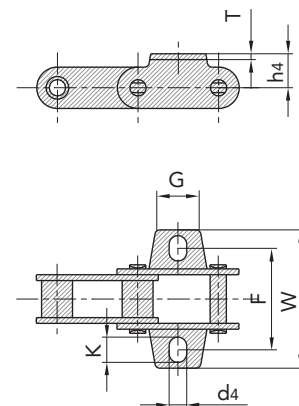
C型钢制农机链附件 C type steel agricultural chain attachments

附件号 SFR		链号 SFR	G	F	W	d4	K	h4	T
SFR Att. No.		SFR Chain No.	mm	mm	mm	mm	mm	mm	mm
A1F1	K1F1	38.4V	22.0	57.5	82.0	9.0	11.0	15.4	3.0
A1	K1	CA550	22.0	52.5	76.2	8.3	10.0	12.7	2.8
A1	K1	CA555	22.0	52.5	76.2	8.3	10.0	12.7	3.1

A1F1  
A1



K1F1  
K1

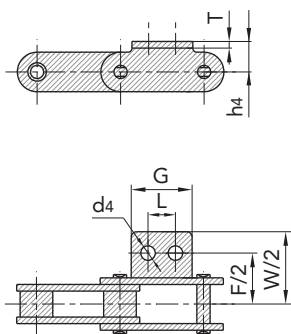


## C型钢制农机链附件 C type steel agricultural chain attachments

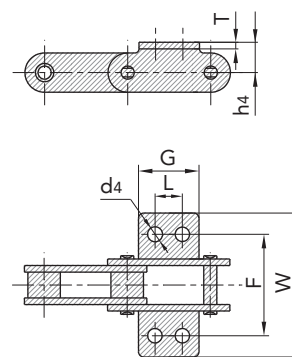
### C型钢制农机链附件 C type steel agricultural chain attachments

附件号 SFR		链号 SFR	G	L	F	W	d4	h4	T
SFR Att. No.		SFR Chain No.	mm	mm	mm	mm	mm	mm	mm
A2	K2	CA2060H	28.6	14.3	42.9	67.8	5.5	14.7	3.25
A2S	K2S	CA2060H	28.6	14.3	42.9	67.8	7.1	14.7	3.25

A2  
A2S



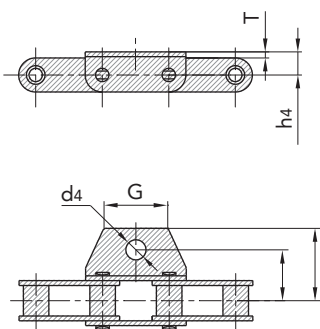
K2  
K2S



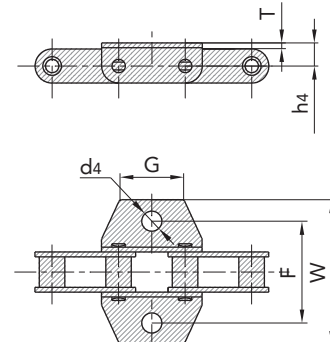
### C型钢制农机链附件 C type steel agricultural chain attachments

附件号 SFR		链号 SFR	G	F	W	d4	h4	T
SFR Att. No.		SFR Chain No.	mm	mm	mm	mm	mm	mm
A18	K18	CA550R	22.6	54.0	71.6	8.5	12.7	3.1
A69	K69	38.4R	40.0	57.0	84.0	10.5	16.5	2.5
A70	K70	CA624	40.0	57.0	86.0	10.5	16.0	3.0

A18  
A69  
A70



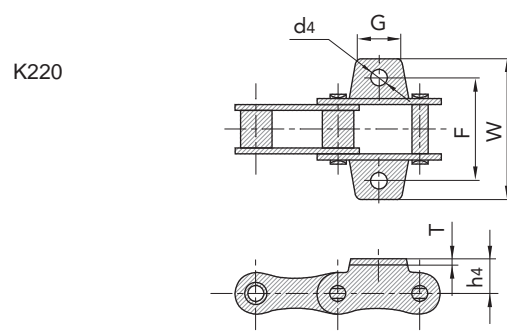
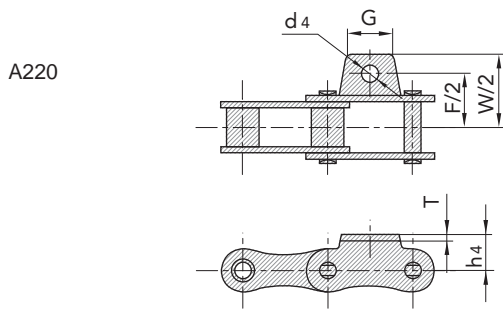
K18  
K69  
K70



## C型钢制农机链附件 C type steel agricultural chain attachments

C型钢制农机链附件 C type steel agricultural chain attachments

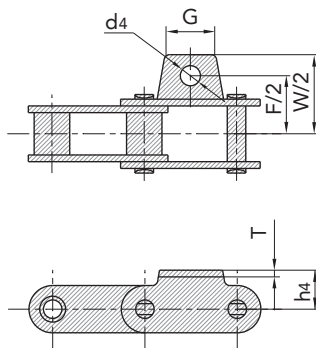
附件号 SFR		链号 SFR	G	F	W	d4	h4	T
SFR Att. No.		SFR Chain No.	mm	mm	mm	mm	mm	mm
A220	K220	CA413	22.0	70.5	90.0	8.5	16.0	3.0



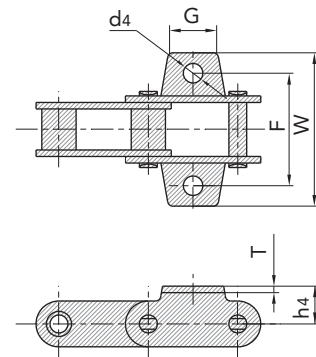
C型钢制农机链附件 C type steel agricultural chain attachments

附件号 SFR		链号 SFR	G	F	W	d4	h4	T
SFR Att. No.		SFR Chain No.	mm	mm	mm	mm	mm	mm
A1	K1	38.4V	22.0	57.5	82.0	9.0	15.4	3.0
A1	K1	CA550V	27.0	54.0	75.54	8.5	16.5	3.0
A1F1	K1F1	CA550V	27.0	50.8	75.54	8.5	16.5	3.0
A27	K27	CA550	22.2	53.9	71.4	8.7	12.7	2.8
A27S	K27S	CA550	22.2	53.9	71.4	10.3	12.7	2.8
A29	K29	CA550	22.2	50.8	71.4	10.3	12.7	2.8

A1  
A1F1  
A27  
A27S  
A29



K1  
K1F1  
K27  
K27S  
K29



传动链  
Driving Chain

电引链  
Hoisting Chain

输送链  
Conveyor Chain

不锈钢链  
Stainless Steel Chain

农机链  
Agricultural Chain

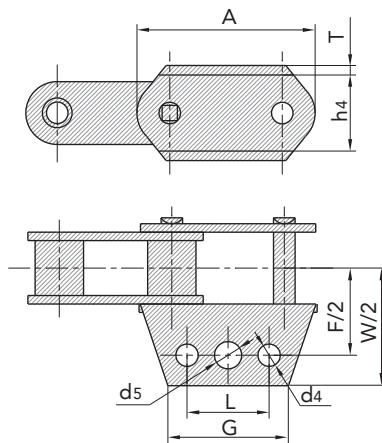


## C型钢制农机链附件 C type steel agricultural chain attachments

C型钢制农机链附件 C type steel agricultural chain attachments

附件号 SFR	链号 SFR	A	L	G	F	W	h <sub>4</sub>	d <sub>4</sub>	d <sub>5</sub>	T
SFR Att. No.	SFR Chain No.	mm	mm	mm	mm	mm	mm	mm	mm	mm
AA3	CA550	63.5	30.22	44.45	64.1	81.4	23.88	8.25	9.9	2.8

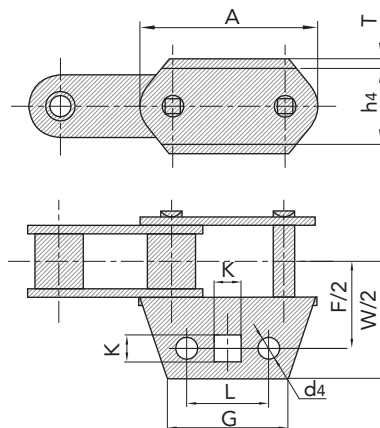
AA3



C型钢制农机链附件 C type steel agricultural chain attachments

附件号 SFR	链号 SFR	A	L	G	F	W	h <sub>4</sub>	d <sub>4</sub>	K	T
SFR Att. No.	SFR Chain No.	mm	mm	mm	mm	mm	mm	mm	mm	mm
AA3	CA557	66.55	30.22	44.45	60.54	86.6	23.9	8.25	9.7	3.5

AA3



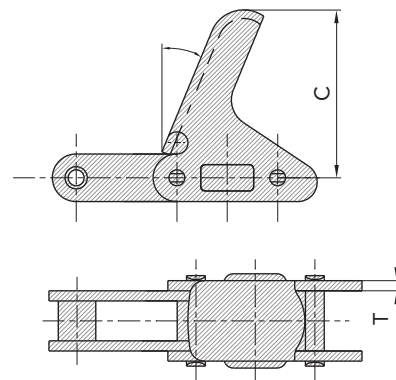
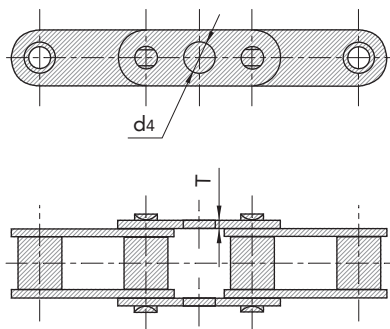
## C型钢制农机链附件 C type steel agricultural chain attachments

C型钢制农机链附件

附件号 SFR	链号 SFR	d4	T
SFR Att. No.	SFR Chain No.	mm	mm
B1	CA2060H	8.33	3.25

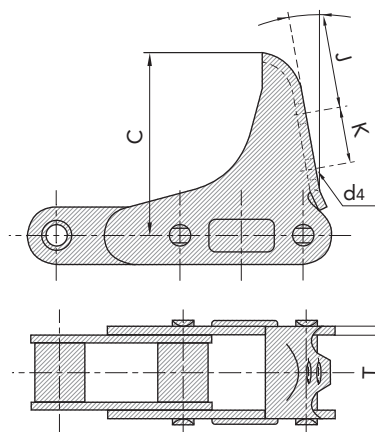
C type steel agricultural chain attachments

附件号 SFR	链号 SFR		C	T
SFR Att. No.	SFR Chain No.		mm	mm
C2E	CA2060H	22.5°	76.20	3.25



C型钢制农机链附件 C type steel agricultural chain attachments

附件号 SFR	链号 SFR		C	K	J	d4	T
SFR Att. No.	SFR Chain No.		mm	mm	mm	mm	mm
C3E	CA555	10°	61.5	19.0	22.5	7.0	3.1



传动链  
Driving Chain

电引链  
Hoisting Chain

输送链  
Conveyor Chain

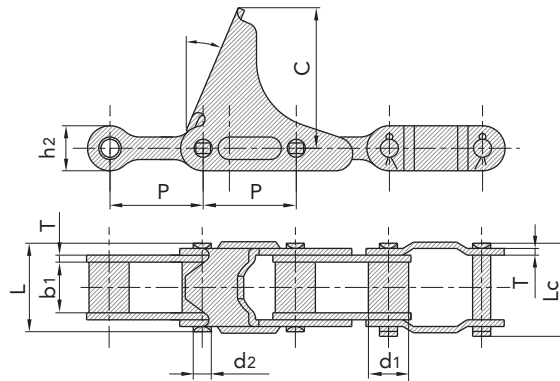
不锈钢链  
Stainless Steel Chain

农机链  
Agricultural Chain

## C型钢制农机链附件 C type steel agricultural chain attachments

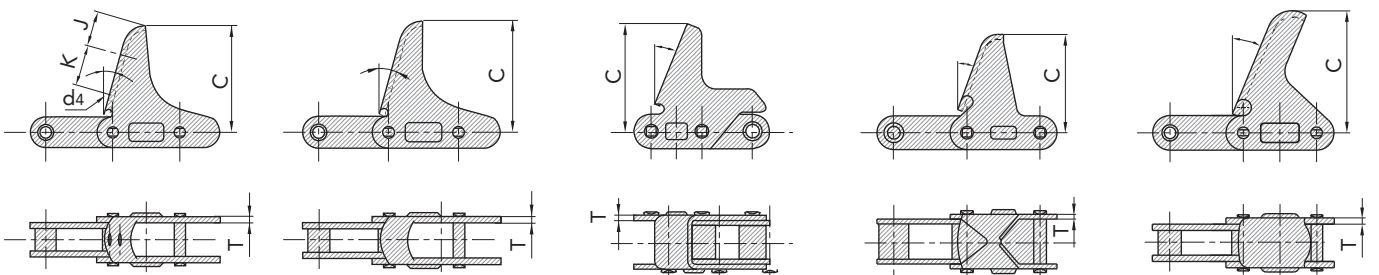
C型钢制农机链附件 C type steel agricultural chain attachments

附件 SFR	链号 SFR	节距 Pitch	滚子直径 Roller diameter	内节内宽 Width between inner plates	销轴直径 Pin diameter	销轴长度 Pin length		链板尺寸 Plate dimension		附件尺寸 Attachment dimension		极限拉伸载荷 Ultimate tensile strength	平均拉伸载荷 Average tensile strength
SFR Att. No.	SFR Chain No.	P	d <sub>1</sub> max	b <sub>1</sub> min	d <sub>2</sub> max	L max	L <sub>c</sub> max	h <sub>2</sub> max	t/T max	C		Q <sub>min</sub>	q
		mm	mm	mm	mm	mm	mm	mm	mm	mm		kN/lbf	kN
C5E	ZGS41.4	41.4	17.85	23.0	8.2	39.5	41.4	20.0	3.0	62.5	23°	39.1/8795	2.82
C6E	ZGS41.4	41.4	17.85	23.0	8.2	39.5	41.4	20.0	3.0	84.0	23°	39.1/8795	2.99



C型钢制农机链附件 C type steel agricultural chain attachments

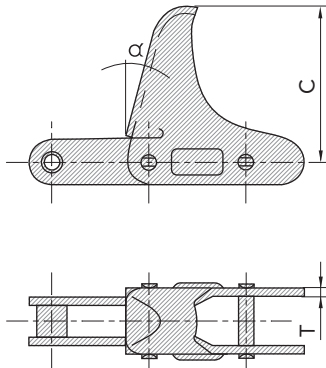
附件号 SFR	链号 SFR		C	K	J	d <sub>4</sub>	T
SFR Att. No.	SFR Chain No.		mm	mm	mm	mm	mm
C6E	CA550	20.0°	55.60				2.8
C6E	CA555	15.0°	63.50				3.1
C6EJ	CA555	15.0°	66.00	25.5	21.5	7.0	3.1
C6E	CA2060H	22.5°	63.50				3.25
C6E	CA2801	22.0°	63.85				3.0



## C型钢制农机链附件 C type steel agricultural chain attachments

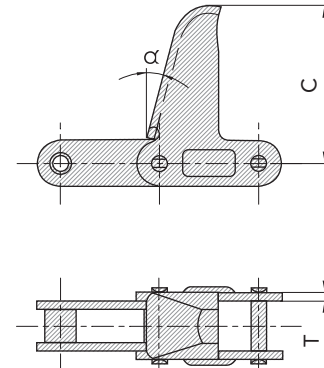
C型钢制农机链附件

附件号 SFR	链号 SFR		C	T
SFR Att. No.	SFR Chain No.		mm	mm
C11E	CA550	17.0°	63.5	2.8



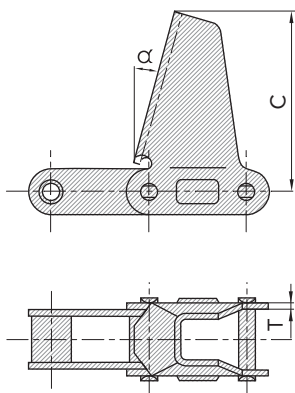
C type steel agricultural chain attachments

附件号 SFR	链号 SFR		C	T
SFR Att. No.	SFR Chain No.		mm	mm
C13E	CA620	15.0°	92.1	3.25
C13E	CA550	15.0°	92.1	2.80



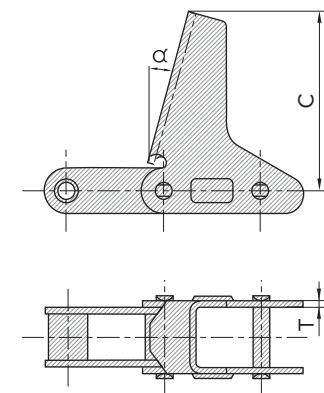
C型钢制农机链附件

附件号 SFR	链号 SFR		C	T
SFR Att. No.	SFR Chain No.		mm	mm
C17E	CA550	20.0°	76.2	2.8



C type steel agricultural chain attachments

附件号 SFR	链号 SFR		C	T
SFR Att. No.	SFR Chain No.		mm	mm
C17E	CA555	22.5°	76.2	3.25



传动链  
Driving Chain

电引链  
Hoisting Chain

输送链  
Conveyor Chain

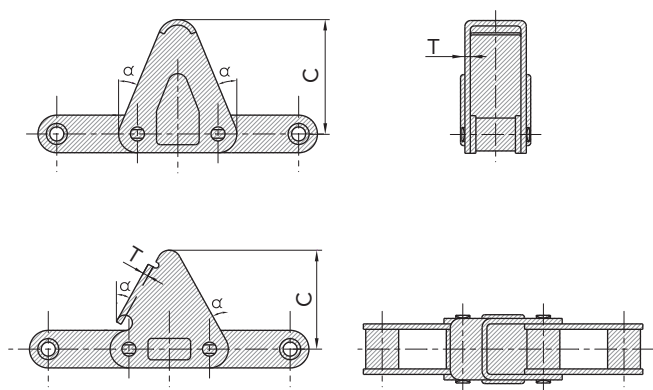
不锈钢链  
Stainless Steel Chain

农机链  
Agricultural Chain

## C型钢制农机链附件 C type steel agricultural chain attachments

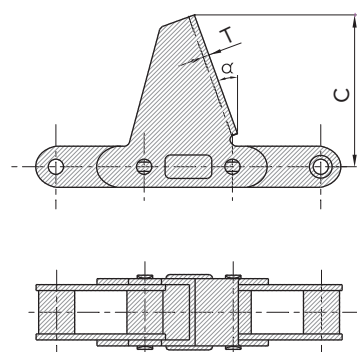
C型钢制农机链附件

附件号 SFR	链号 SFR		C	T
SFR Att. No.	SFR Chain No.		mm	mm
C30E	CA620	22.5°	58.7	3.25
	CA550	29.0°	50.8	2.80



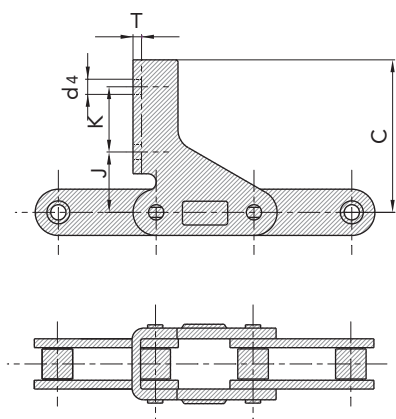
C type steel agricultural chain attachments

附件号 SFR	链号 SFR		C	T
SFR Att. No.	SFR Chain No.		mm	mm
CPE	CA550	20.0°	74.5	2.8



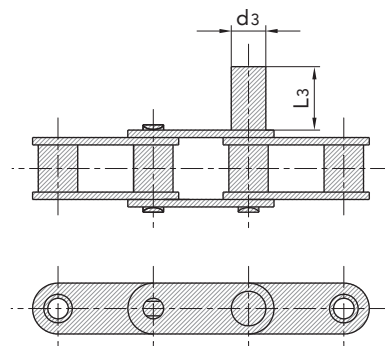
C型钢制农机链附件

附件号 SFR	链号 SFR	K	J	d4	C	T
SFR Att. No.	SFR Chain No.	mm	mm	mm	mm	mm
CPE	C2060H	25.4	23.5	5.9	59.4	3.25



C type steel agricultural chain attachments

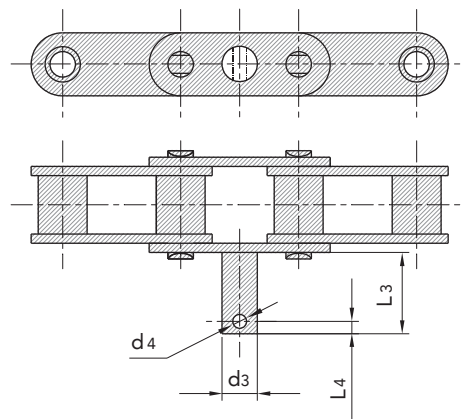
附件号 SFR	链号 SFR	d3	L3
SFR Att. No.	SFR Chain No.	mm	mm
D1EP	CA550	12.7	31.75
D1EP	CA620	12.7	44.45
D1EP1	CA620	14.3	31.75
D1EP2	CA550	12.7	50.80
D1EP5	CA620	12.7	38.10
D1ERS	CA620	14.3	38.10



## C型钢制农机链附件 C type steel agricultural chain attachments

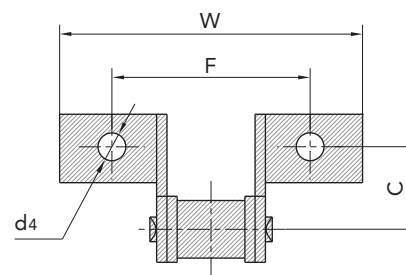
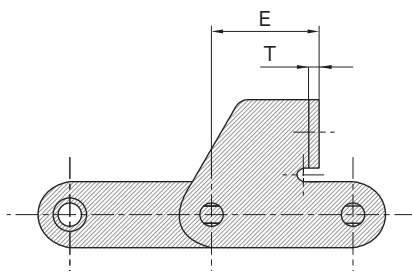
C型钢制农机链附件 C type steel agricultural chain attachments

附件号 SFR	链号 SFR	L3	d3	L4	d4
SFR Att. No.	SFR Chain No.	mm	mm	mm	mm
D11	CA550	25.4	12.7	4.8	3.6



C型钢制农机链附件 C type steel agricultural chain attachments

附件号 SFR	链号 SFR	F	W	C	d4	E	T
SFR Att. No.	SFR Chain No.	mm	mm	mm	mm	mm	mm
F1	CA624	52.0	73.0	24.0	8.3	38.4	3.0
F45	38.4R	52.0	69.8	24.0	8.4	37.5	2.5
SDF1	38.4R	52.0	70.0	24.5	8.4	38.4	2.5
SD	38.4R	52.0	69.8	24.0	8.4	38.4	3.0



传动链  
Driving Chain

电引链  
Hoisting Chain

输送链  
Conveyor Chain

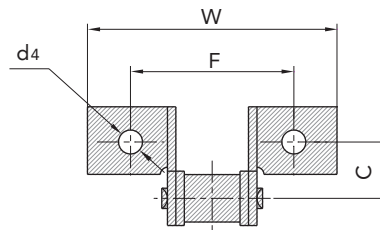
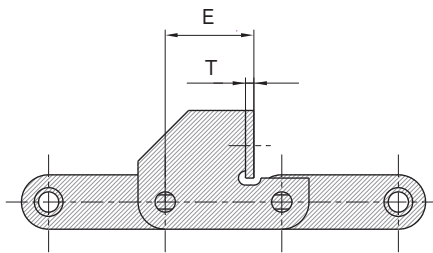
不锈钢链  
Stainless Steel Chain

农机链  
Agricultural Chain

## C型钢制农机链附件 C type steel agricultural chain attachments

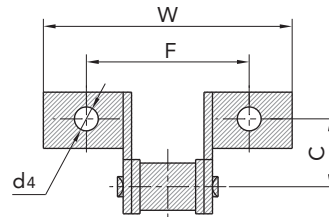
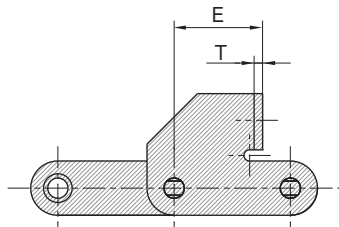
C型钢制农机链附件 C type steel agricultural chain attachments

附件号 SFR	链号 SFR	F	W	C	d4	E	T
SFR Att. No.	SFR Chain No.	mm	mm	mm	mm	mm	mm
F1*	CA550	62.0	84.0	20.0	8.6	32.5	2.8
F1	CA550R	58.0	88.6	20.0	6.2	31.5	3.1



C型钢制农机链附件 C type steel agricultural chain attachments

附件号 SFR	链号 SFR	F	W	C	d4	E	T
SFR Att. No.	SFR Chain No.	mm	mm	mm	mm	mm	mm
F4	CA550	47.6	71.4	31.0	8.6	36.9	2.8

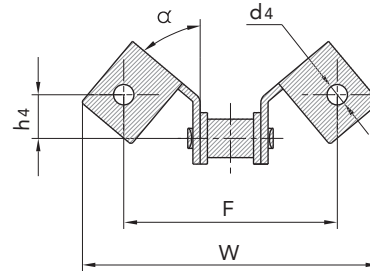
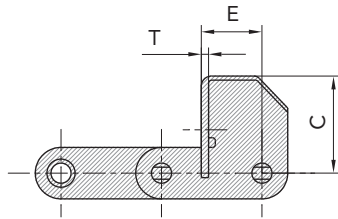




## C型钢制农机链附件 C type steel agricultural chain attachments

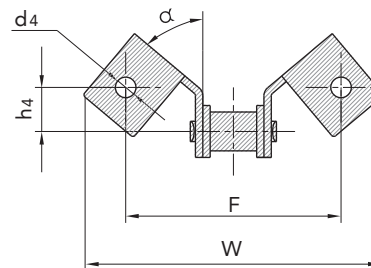
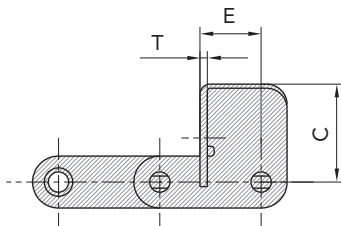
C型钢制农机链附件 C type steel agricultural chain attachments

附件号 SFR	链号 SFR	F	W	C	h4	E	d4	T	
SFR Att. No.	SFR Chain No.	mm	mm	mm	mm	mm	mm	mm	
F14	CA550	79.25	103.84	31.75	15.75	20.32	10.0	2.8	65.0°
SE	CA550	79.38	106.58	31.75	15.88	21.34	8.6	2.8	57.0°
SF	CA550	79.38	106.58	31.75	15.88	21.34	10.3	2.8	57.0°
SFD	CA550HD	79.38	109.73	50.11	28.58	24.28	8.33	3.1	22.0°



C型钢制农机链附件 C type steel agricultural chain attachments

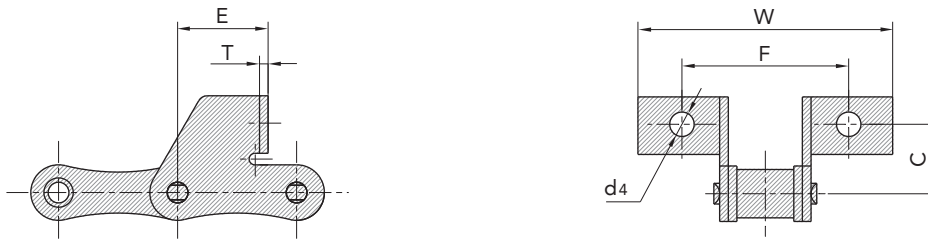
附件号 SFR	链号 SFR	F	W	C	h4	E	d4	T	
SFR Att. No.	SFR Chain No.	mm	mm	mm	mm	mm	mm	mm	
F15	CA550	79.0	107.20	33.5	14.85	19.0	8.5	2.8	67.5°
F17	CA550	114.3	139.42	41.0	20.60	25.4	10.0	2.8	60.0°



## C型钢制农机链附件 C type steel agricultural chain attachments

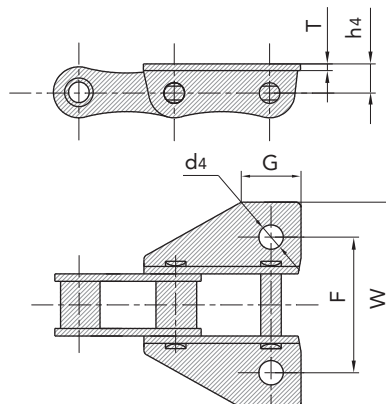
C型钢制农机链附件 C type steel agricultural chain attachments

附件号 SFR	链号 SFR	F	W	C	d4	E	T
SFR Att. No.	SFR Chain No.	mm	mm	mm	mm	mm	mm
F4	CA413	60.0	83.5	25.0	6.5	28.6	3.0



C型钢制农机链附件 C type steel agricultural chain attachments

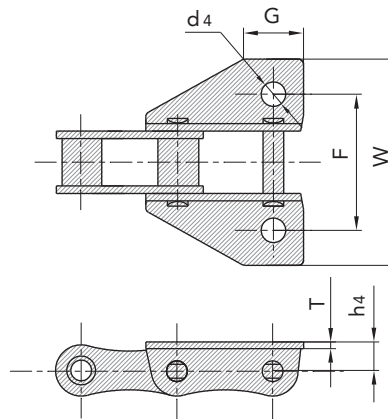
附件号 SFR	链号 SFR	F	W	C	d4	E	T
SFR Att. No.	SFR Chain No.	mm	mm	mm	mm	mm	mm
K39	A550	31.8	50.80	71.4	8.33	12.7	2.8
K39G	A550	31.8	54.00	71.4	6.75	12.7	2.8
K39M	A550	31.8	50.80	71.4	9.92	12.7	2.8
K39M	A557	31.0	57.15	78.0	10.5	14.2	3.1
K39S	A550	19.1	50.80	71.4	8.33	12.7	2.8



## C型钢制农机链附件 C type steel agricultural chain attachments

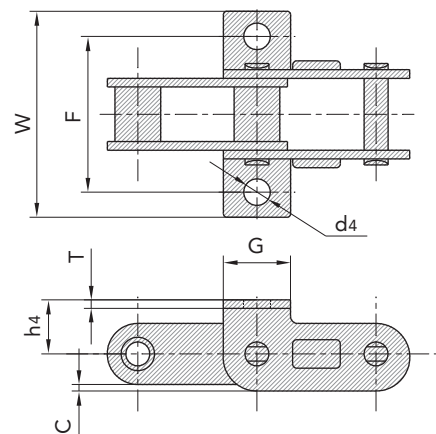
C型钢制农机链附件 C type steel agricultural chain attachments

附件号 SFR	链号 SFR	G	F	W	d4	h4	T
SFR Att. No.	SFR Chain No.	mm	mm	mm	mm	mm	mm
K35	CA557	31.8	50.80	73.4	8.7	13.8	3.1
K35M	CA557	31.8	50.80	73.4	10.3	13.8	3.1
AK39*	CA550	31.8	50.80	71.4	8.6	12.7	2.8
K39	CA557	31.8	57.15	73.6	8.7	13.8	3.1
K39M	CA550HD	31.8	57.15	77.6	10.2	14.0	3.1
AK39M*	CA550	31.8	50.80	71.4	10.3	12.7	2.8
AK39S*	CA550	19.1	50.80	71.4	8.6	12.7	2.8



C型钢制农机链附件 C type steel agricultural chain attachments

附件号 SFR	链号 SFR	F	W	d4	G	C	h4	T
SFR Att. No.	SFR Chain No.	mm	mm	mm	mm	mm	mm	mm
K39	CA555	42.9	60.3	6.75	21.8	2.5	19.1	3.1



传动链  
Driving Chain

电引链  
Hoisting Chain

输送链  
Conveyor Chain

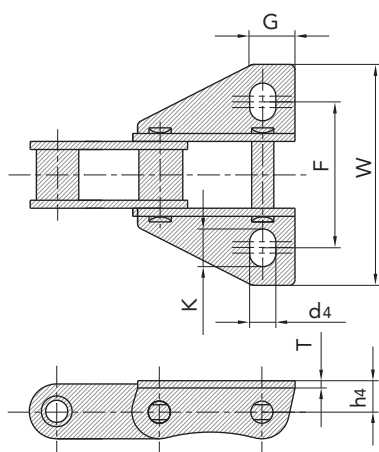
不锈钢链  
Stainless Steel Chain

农机链  
Agricultural Chain

## C型钢制农机链附件 C type steel agricultural chain attachments

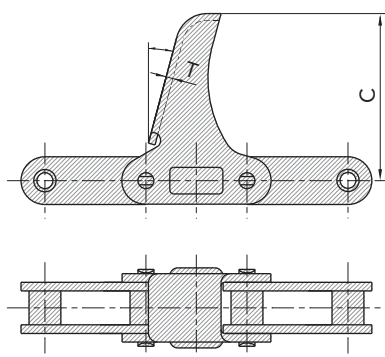
C型钢制农机链附件 C type steel agricultural chain attachments

附件号 SFR	链号 SFR	G	F	W	d4	K	h4	T
SFR Att. No.	SFR Chain No.	mm	mm	mm	mm	mm	mm	mm
K39M	CA557	29.5	50.8	71.4	9.9	13.0	12.7	3.1



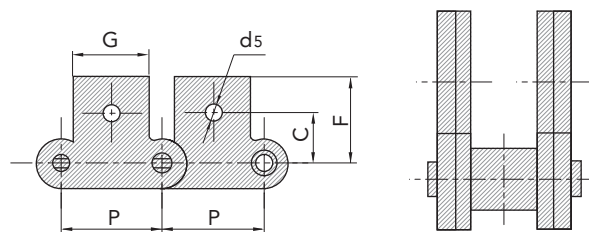
C型钢制农机链附件

附件号 SFR	链号 SFR		C	T
SFR Att. No.	SFR Chain No.		mm	mm
LV41N	CA550	15.0°	68.5	2.8



C type steel agricultural chain attachments

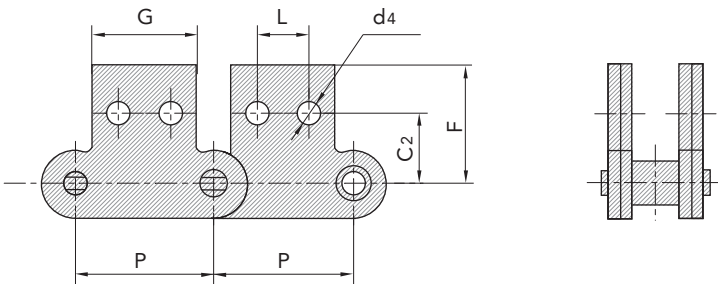
附件号 SFR	链号 SFR	G	C	F	d4	T
SFR Att. No.	SFR Chain No.	mm	mm	mm	mm	mm
M1	C2060H	28.6	17.5	32.9	9.2	3.25



C型钢制农机链附件  
C type steel agricultural chain attachments

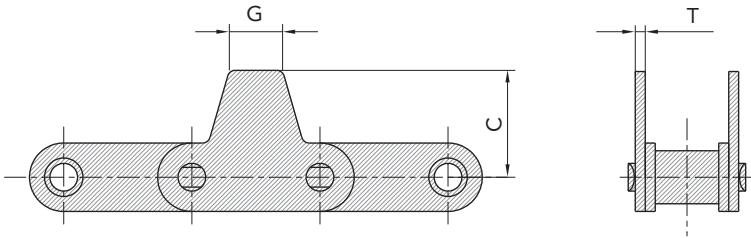
C型钢制农机链附件 C type steel agricultural chain attachments

附件号 SFR	链号 SFR	G	L	C	F	d4	T
SFR Att. No.	SFR Chain No.	mm	mm	mm	mm	mm	mm
M2	CA2060H	28.6	14.3	19.1	32.9	5.5	3.25



C型钢制农机链附件 C type steel agricultural chain attachments

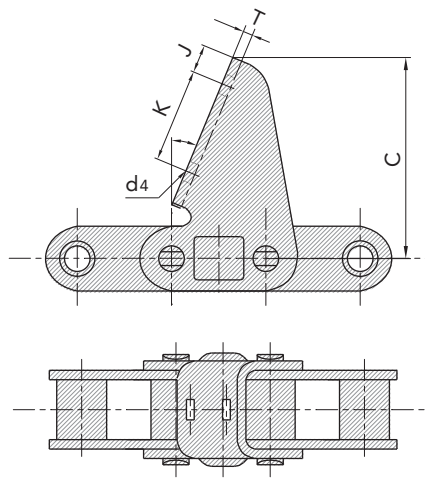
附件号 SFR	链号 SFR	C	G	T
SFR Att. No.	SFR Chain No.	mm	mm	mm
M19	CA550	30.1	22.2	2.8



## C型钢制农机链附件 C type steel agricultural chain attachments

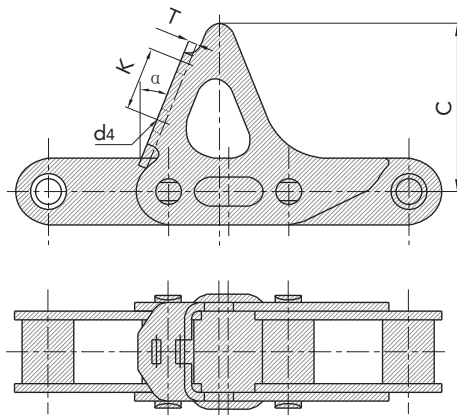
C型钢制农机链附件 C type steel agricultural chain attachments

附件号 SFR	链号 SFR		K	J	T	C	d4
SFR Att. No.	SFR Chain No.		mm	mm	mm	mm	mm
M20	CA627	22.5°	30	9.0	3.0	64	6.5 X 6.5



C型钢制农机链附件 C type steel agricultural chain attachments

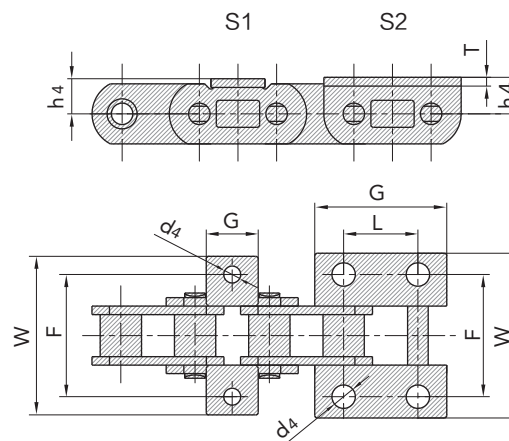
附件号 SFR	链号 SFR		K	T	C	d4
SFR Att. No.	SFR Chain No.		mm	mm	mm	mm
M22	S55H	22.0°	21.8	3.0	58	8.2 X 8.2



## C型钢制农机链附件 C type steel agricultural chain attachments

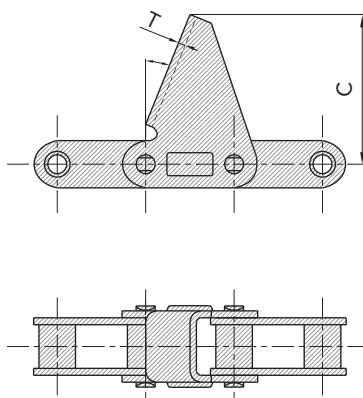
C型钢制农机链附件 C type steel agricultural chain attachments

附件号 SFR	链号 SFR	L	G	F	W	h4	d4	T
SFR Att. No.	SFR Chain No.	mm	mm	mm	mm	mm	mm	mm
S1	CAE44151		20.0	47.0	61.0	13.0	6.5	3.25
S2	CAE44151	28.58	51.0	47.0	62.4	13.5	9.0	.325



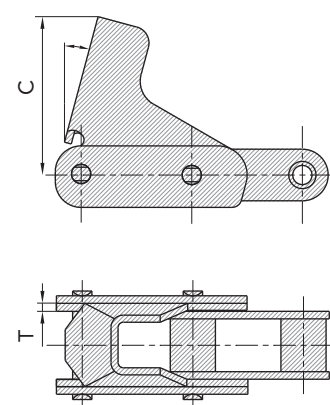
C型钢制农机链附件

附件号 SFR	链号 SFR		C	T
SFR Att. No.	SFR Chain No.		mm	mm
S81	CA624	22.0°	65.0	3.0



C type steel agricultural chain attachments

附件号 SFR	链号 SFR		C	T
SFR Att. No.	SFR Chain No.		mm	mm
TC61	CA550	20.0°	60.0	3.25



传动链  
Driving Chain

电引链  
Hoisting Chain

输送链  
Conveyor Chain

不锈钢链  
Stainless Steel Chain

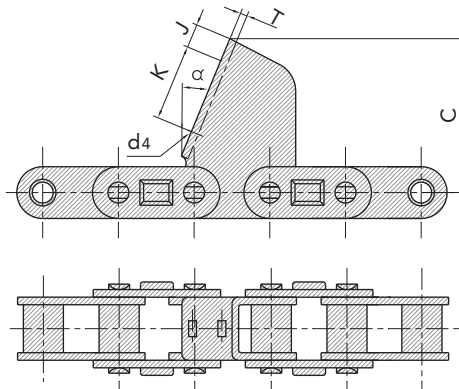
农机链  
Agricultural Chain



## C型钢制农机链附件 C type steel agricultural chain attachments

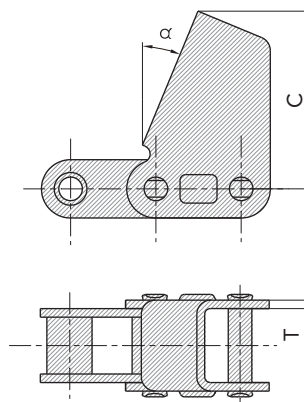
C型钢制农机链附件 C type steel agricultural chain attachments

附件号 SFR	链号 SFR		C	K	J	d4	T
SFR Att. No.	SFR Chain No.		mm	mm	mm	mm	mm
TM91	CA2801	22.5°	62.5	30.0	10.5	6.3 X 6.3	3.0



C型钢制农机链附件 C type steel agricultural chain attachments

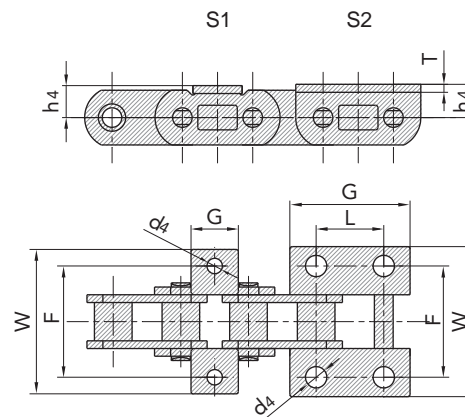
附件号 SFR	链号 SFR		C	T
SFR Att. No.	SFR Chain No.	mm	mm	mm
TM91E	CA2801	22.5°	62.5	3.0



## C型钢制农机链附件 C type steel agricultural chain attachments

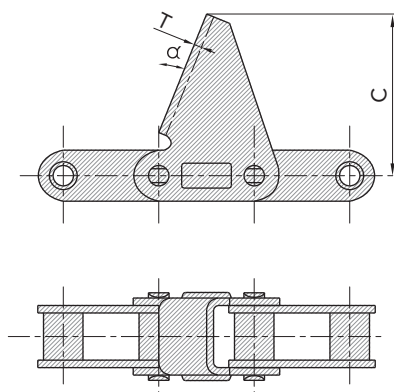
C型钢制农机链附件 C type steel agricultural chain attachments

附件号 SFR	链号 SFR	L	G	F	W	h4	d4	T
SFR Att. No.	SFR Chain No.	mm	mm	mm	mm	mm	mm	mm
S1	CAE44151		20.0	47.0	61.0	13.0	6.5	3.25
S2	CAE44151	28.58	51.0	47.0	62.4	13.5	9.0	.325



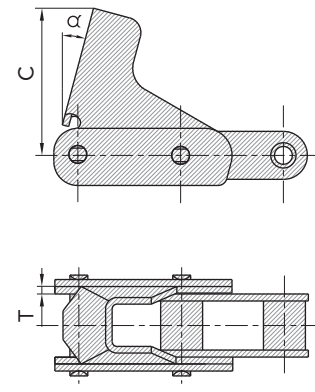
C型钢制农机链附件

附件号 SFR	链号 SFR		C	T
SFR Att. No.	SFR Chain No.		mm	mm
S81	CA624	22.0°	65.0	3.0



C type steel agricultural chain attachments

附件号 SFR	链号 SFR		C	T
SFR Att. No.	SFR Chain No.		mm	mm
TC61	CA550	20.0°	60.0	3.25



传动链  
Driving Chain

电引链  
Hoisting Chain

输送链  
Conveyor Chain

不锈钢链  
Stainless Steel Chain

农机链  
Agricultural Chain



持正科技股份有限公司  
SFR TECHNOLOGY CO., LTD.

[www.sfrchain.com](http://www.sfrchain.com)

总部地址  
中国杭州市余杭区仓前海曙路12号

邮箱: [sales@sfrchain.com](mailto:sales@sfrchain.com)

Headquarters Address  
12 Haishu Rd, Cangqian, Yuhang District,  
Hangzhou, Zhejiang, P.R. China 311121

Email: [sales@sfrchain.com](mailto:sales@sfrchain.com)