

# Quality of the future



***MWK Bionik<sup>®</sup>***  
innovative, future-oriented,  
sustainable

MWK Bionik GmbH  
Im Gewerbegebiet 22, D - 83093 Bad Endorf

Tel.: +49 8053 59817 0  
Fax: +49 8053 59817 19

[mwk@mwk-bionik.de](mailto:mwk@mwk-bionik.de)  
[www.mwk-bionik.de](http://www.mwk-bionik.de)



## Company profile



3.500 Customers

1.600 m<sup>2</sup> think-tank

14 Patents in 5 patent groups

28 employees

1 Philosophy

Bad Endorf





## Company philosophy



### Matthias Wackerbauer

Founder and CEO MWK Bionik® GmbH

*„A clever combination  
of Biology and Technology  
holds the greatest potential.*

*We use bionics,  
to protect our environment. “*



# The MWK Bionik Group



*Manufacturer of microbiological end-user products*



*BMT-System®: Fermentation of straw-like biomass*



*Remediation of contaminated sites  
Elimination of pollutants*



*Environmental laboratory - accredited, certified and notified  
Biogas consulting, Biogas additives*



## Our company awards

### Biogas Innovationspreis 2017

In 2017 we received the "Biogas Innovation Award of German Agriculture" for the BMT-System® for the digestion of straw-like biomass.



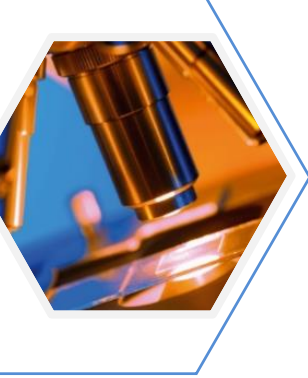
StartGreen Award  
FINALIST 2016



### GreenTec Award 2018

We are proud winners of the GreenTec Award 2018 in the category "Energy" with our product "bioSol". bioSol is used for the cleaning and coating of PV systems on a mineral and microbiological basis. An efficiency increase of up to 20% is achieved.





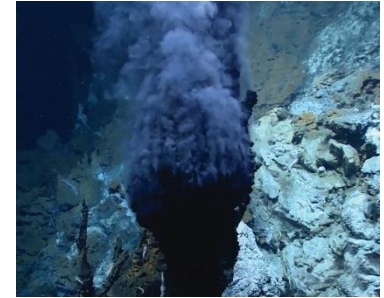
# Self-regulating biotechnology

Experience and know-how from 30 years of MWK Bionik GmbH together with Uphoff Lab flow into the development of our products, for the remediation of contaminated sites, wastewater and waste treatment. The combination of microorganisms with novel process methods make it possible to break down pollutants and saturated compounds quickly and efficiently. They are used wherever difficult biodegradation processes are to be carried out efficiently and ecosystems have been thrown out of balance. From these, we develop products that can degrade pollutants even on a small scale, such as in the household. This means:

**Anyone can actively protect the environment!**

The basis of all products is an adaptable community of natural, risk-free and highly efficient microorganisms. Our selected microbes are in an individual nutrient solution with micro- and macronutrients as well as photoactive and electromagnetic substances.

**Our special biotechnological achievement lies in creating a base/nutrient solution for the active organisms in which they do not inhibit each other and thus develop their full effectiveness during application in order to eliminate harmful substances.**



Some of these organisms originate from extreme environments such as the deep sea or pack ice. Others originate from long-term highly polluted environments, such as waste water from ore mines. This is what makes our products so unique and efficient.



## Our products - a selection



Clean with the power of nature, which we bundle and use precisely!

Chemical cleaning agents not only pollute the environment, but also affect our health. Using the power of microorganisms in the household is a healthy and future-oriented alternative.

Securing the quality of the future in a natural way!

MWK Bionik® offers ingenious solutions for mold control, remediation of contaminated sites, increasing efficiency of renewable energies, treatment of shredder sand, degradation of mineral oil contamination in soils and odor elimination, e.g. of sewage sludge.



Removes stubborn  
odours of organic  
origin



Removes mossy  
deposits on surfaces



One for all.  
Cleaning with the  
power of nature!



Cleaning and coating  
of PV systems



Remove oil stains and  
protect the environment  
spare sb./sth.



Microbiological solution  
for mould control





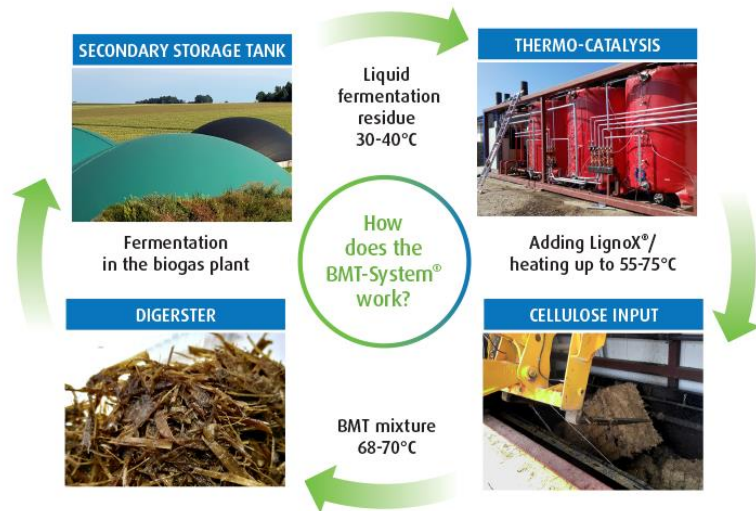
# BMT-System®

 **MWK Bionik® Systeme**  
*Solutions for a smarter Future.*

## The BMT-System® for fermentation of straw-like biomass in biogas plants

- 35% reduced input material costs
- **Reactivation** of biomass in the manure storage tank
- Use of **residual biomass** (straw)
- **Reducing** the need for digestion space
- Increase in **power output**

 **MWK Bionik®**  
*Solutions for a smarter Future.*







# Remediation of contaminated sites

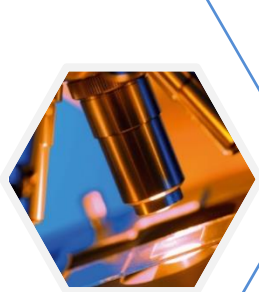


The "in situ" remediation measures with bioEngine are carried out according to the ENA concept (Enhanced Natural Attenuation).

Adapted microorganisms stimulate and support the natural pollutant reduction process in the natural reaction space.

- individual solutions
- tailor-made products
- safe and easy to use
- Species protection: active environmental protection for humans, animals and plants
- no soil exchange necessary
- unique biotechnology





# Laboratory and Analytics



## **Analytics since 1989, accompaniment and implementation of problem treatments since 1996**

Uphoff GmbH, Laboratory for Environmental Analysis, is an accredited, certified and notified testing laboratory according to DIN EN ISO/EC 17025: 2005, Document Attachment D-PL-14517-01-00. It works independently, impartially and is exclusively committed to its task as a testing laboratory. As a service provider in the fields of analysis, sampling and consulting, we are happy to support our customers with our experience and know-how.

With a team of highly skilled employees and state-of-the-art measuring equipment, samples are examined according to the highest quality standards. They are processed immediately, taking into account the test procedures and sample matrix.

The advantage lies in detailed reporting of the analyses and then, if required, problem solving.



Uphoff GmbH is part of the MWK Bionik group of companies.



# Biogas analysis and expert advice



## Why Analytics and Consulting?

- Seasonally changing substrates, fluctuating quality and environmental conditions influence the process biology
- Regular monitoring by analytics allows problems to be identified at an early stage and problems to be avoided or eliminated
- Slumbering potentials can be identified and released (**up to 20% increase in yield!**)
- Support through patented bioEngine additives with trace elements and microorganisms

→ Year-round support with our **consulting packages!**

## What distinguishes us from others?

- Analytics, expert advice and additive production in one house make us **unique**

→ individual, **fast problem solution**

- We measure in **eluate\*** = only bioavailable nutrients are measured

→ Potential deficiencies are not masked by nutrient

contents that are too high.

\*Dissolution of elements contained in the substrate



Identify problems



Eliminate errors



Release potentials

Excellent solutions  
for the quality of  
our future!