



italian
DESIGN AND PRODUCTION

PIPE CLAMPS

FOR THE WIDEST RANGE
OF APPLICATIONS

GENERAL CATALOGUE | **ENG**

PI.EFFE.CI.
A 45 YEARS EXPERIENCE

2

PI.EFFE.CI. A 45 YEARS EXPERIENCE





Pieffeci offers its customers a 45 year experience in the market of pipe fixing systems.

The continuity over the years of the corporate structure -more than two generations- and the continuous search for innovation are the best customers' assurance who reward Pi.effe.ci. all over the world.

Innovation for Pi.effe.ci. means a continuous investments in technology, production capacity and services.

A competent and loyal sales network, covering the entire globe, provides us a reliable feedback from the market and allows us to understand immediately the challenges of the new markets and respond with high-performance and sustainable solutions.

The high efficiency production systems, ensured by constant technological innovation, the proven

competence of its qualified staff, the optimization and automation of processes, allow Pi.effe.ci. to guarantee the quality of the products both for large and small quantities.

Thanks to an efficient internal quality control system, Pi.effe.ci. obtained the ISO 9001 and RINA certifications. The products are tested for compliance and their performance is continuously verified, in order to ensure to the customers the best behavior even under the worst use conditions.

Pi.effe.ci., always tended towards customer satisfaction, provides its customers with complete assistance "pre" and "post" sales, also through constantly updated technical consultation tools.



PI.EFFE.CI. PIPE CLAMPS
ANYWAY, ANYWHERE

6

PI.EFFE.CI. PIPE CLAMPS
**ANYWAY,
ANYWHERE**





PI.EFFE.CI. PIPE CLAMPS
ANYWAY, ANYWHERE

7

Pieffeci range has solutions for pipe fixing in the most different industrial sectors: from oil to wind power, from rail to offshore, from petrochemical to iron and steel, from industrial to naval industry, from mobile to tires, from gas pipelines to mining industry.

Thanks to the internal design center, the company constantly expands its product range to meet the needs of the most demanding applications.

The internal molding of plastic materials also allows the customer to customize the color of the clamps, to meet all the aesthetic or internal codification customer requirements .

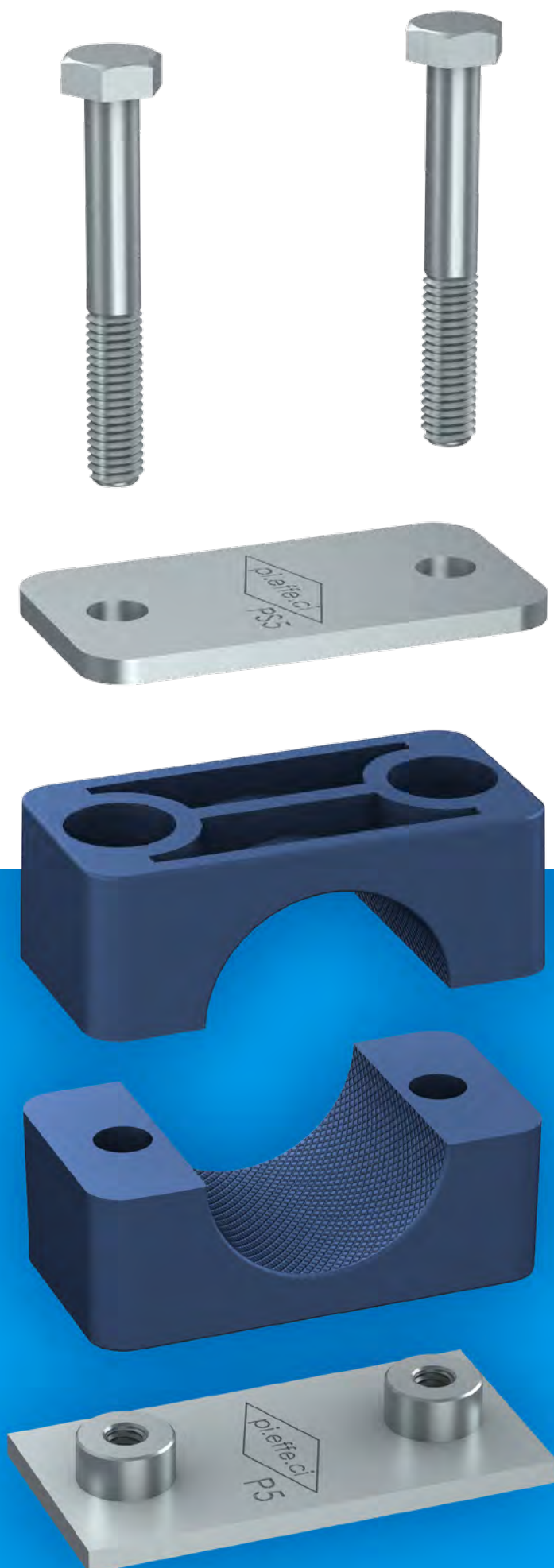
The feedback received from the market grow into continuous search of new solutions and materials to meet the ever-changing needs of the industrial sectors.

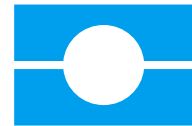
The technical competence and production efficiency of Pi.effe.ci. guarantees to customers a quality that meets the highest technical standards of all the specific industrial applications.

A solid sales and distribution network, of qualified, professionals and specialized dealers, allows Pi.effe.ci. fastening solutions to reach all part of the world.

Thanks to the e-commerce integrated into the company website, reserved for accredited B2B customers, it is also possible to make immediate orders independently or check availability of the products.

The continuous effort of Pi.effe.ci., aimed at increasing accessibility of the printed and on-line catalogue, and also the exhaustive technical documentation published on the web-site, confirm the target to grant, to accredited customers, immediate and direct access to Pi.effe.ci.'s resources.





PIPE CLAMPS STANDARD SERIES

DIN 3015, PART 1

PIPE CLAMPS
STANDARD SERIES

11

CLAMP BODY STANDARD MATERIALS



Polypropylene
Colour **Blue**
Code **PP**

**OTHER COLOURS
AVAILABLE ON DEMAND!**



Polyamide
Colour **Black**
Code **PA**



Rubber Elastomer
Colour **Black**
Code **GM**



Self-extinguishing Polypropylene
Colour **White**
Code **AU**



Aluminium
Colour **Natural**
Code **A**

DIFFERENT DAMETERS AND MATERIALS AVAILABLE ON REQUEST.

Clamp body internal surface:
knurled (C1 to C7)
profiled (C8-C9, AC1 to AC7, C6Q, TG)
smooth (C7C, C1 L to C9 L)

For Material Characteristics, see Technical Appendix (page 143).

COMPONENTS AND ACCESSORIES STANDARD MATERIALS

Carbon Steel S 235 JR with finishing surface in white zinc-coated
Fe Zn c8 II.

Untreated are available on request.

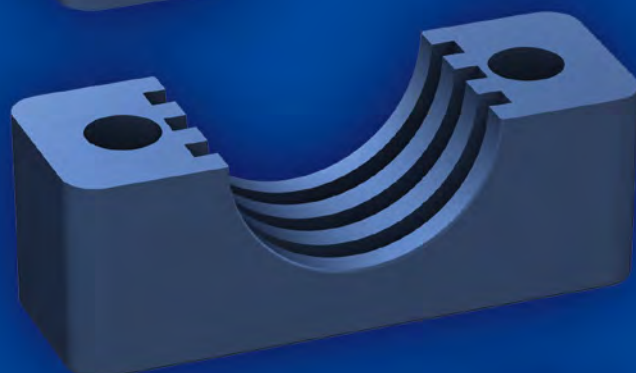
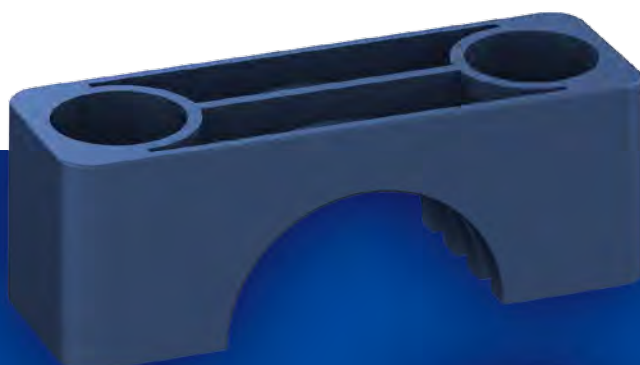
Stainless Steel Inox 316L (X2 CrNiMo 17-12-2) 1.4404
marked with **X** identification code.

The **BB** track is treated with zinc-plating SENDZIMIR.
The **BBP** track is treated with zinc-coating Fe Zn c8 II.

Metric thread: code **M**
UNC thread: code **UNC**.

For Material Characteristics, see Technical Appendix (page 143).







PIPE CLAMPS HEAVY SERIES

DIN 3015, PART 2

PIPE CLAMPS
HEAVY SERIES

35

CLAMP BODY STANDARD MATERIALS



Polypropylene
Colour **Blue**
Code **PP**

**OTHER COLOURS
AVAILABLE ON DEMAND!**



Polyamide
Colour **Black**
Code **PA**



Rubber Elastomer (for CP1-CP6 only)
Colour **Black**
Code **GM**



Self-extinguishing Polypropylene
Colour **White**
Code **AU**



Aluminium
Colour **Natural**
Code **AL**

DIFFERENT DAMETERS AND MATERIALS AVAILABLE ON REQUEST.

Clamp body internal surface:
smooth (CP1L to CP4 L)
profiled (CP1 to CP10)

For Material Characteristics, see Technical Appendix (page 143).

COMPONENTS AND ACCESSORIES STANDARD MATERIALS

Carbon Steel S 275 JR with finishing surface in white zinc-coated
Fe Zn c8 II.

Untreated are available on request.

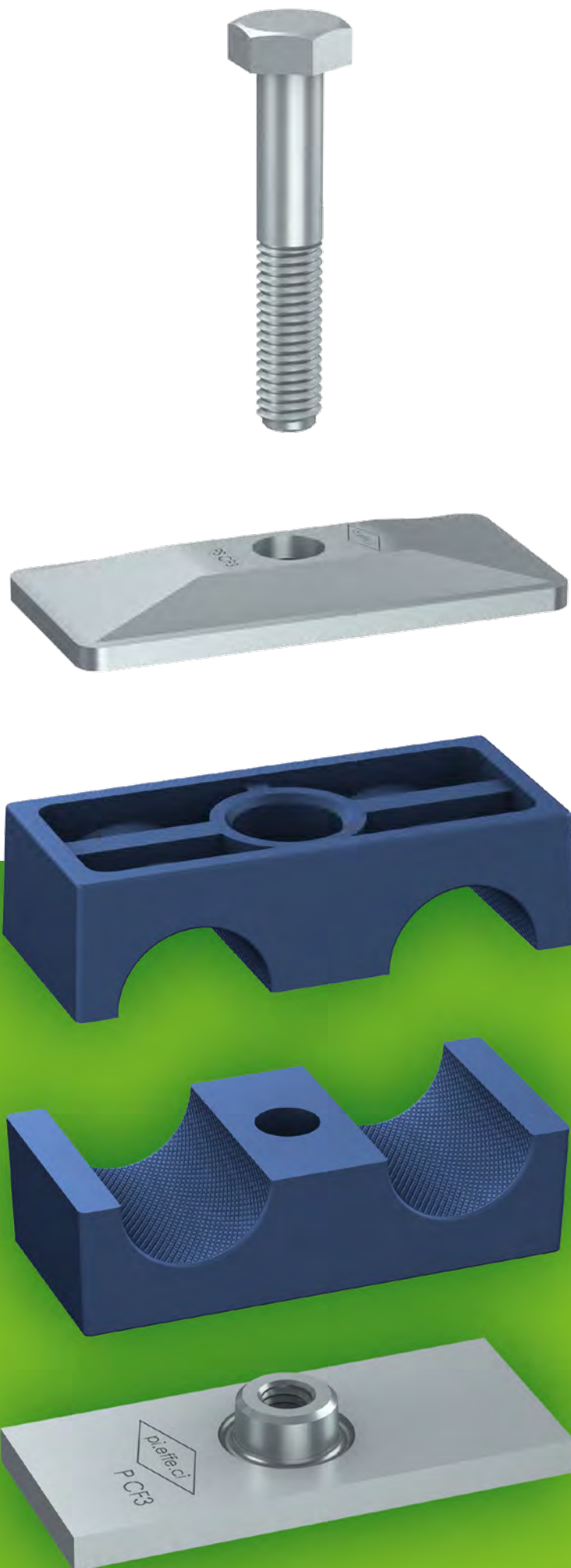
Stainless Steel Inox 316L (X2 CrNiMo 17-12-2) 1.4404
marked with **X** identification code.

The **BBP** track is treated with zinc-coating Fe Zn c8 II.

Metric thread: code **M**
UNC thread: code **UNC**.

For Material Characteristics, see Technical Appendix (page 143).







PIPE CLAMPS **TWIN SERIES**

DIN 3015, PART 3

PIPE CLAMPS
TWIN SERIES

51

CLAMP BODY STANDARD MATERIALS



Polypropylene
Colour **Blue**
Code **PP**

**OTHER COLOURS
AVAILABLE ON DEMAND!**



Polyamide
Colour **Black**
Code **PA**



Rubber Elastomer
Colour **Black**
Code **GM**



Self-extinguishing Polypropylene
Colour **White**
Code **AU**



Aluminium
Colour **Natural**
Code **AL**

DIFFERENT DAMETERS AND MATERIALS AVAILABLE ON REQUEST.

ON REQUEST, ANY CLAMP BODY CAN BE SUPPLIED
WITH TWO DIFFERENT DIAMETERS.

Clamp body internal surface:
smooth (AL CF, CF1 L to CF5 L)
knurled (CF1 to CF5)

For Material Characteristics, see Technical Appendix (page 143).

COMPONENTS AND ACCESSORIES STANDARD MATERIALS

Carbon Steel S 235 JR with finishing surface in white zinc-coated
Fe Zn c8 II.

Untreated are available on request.

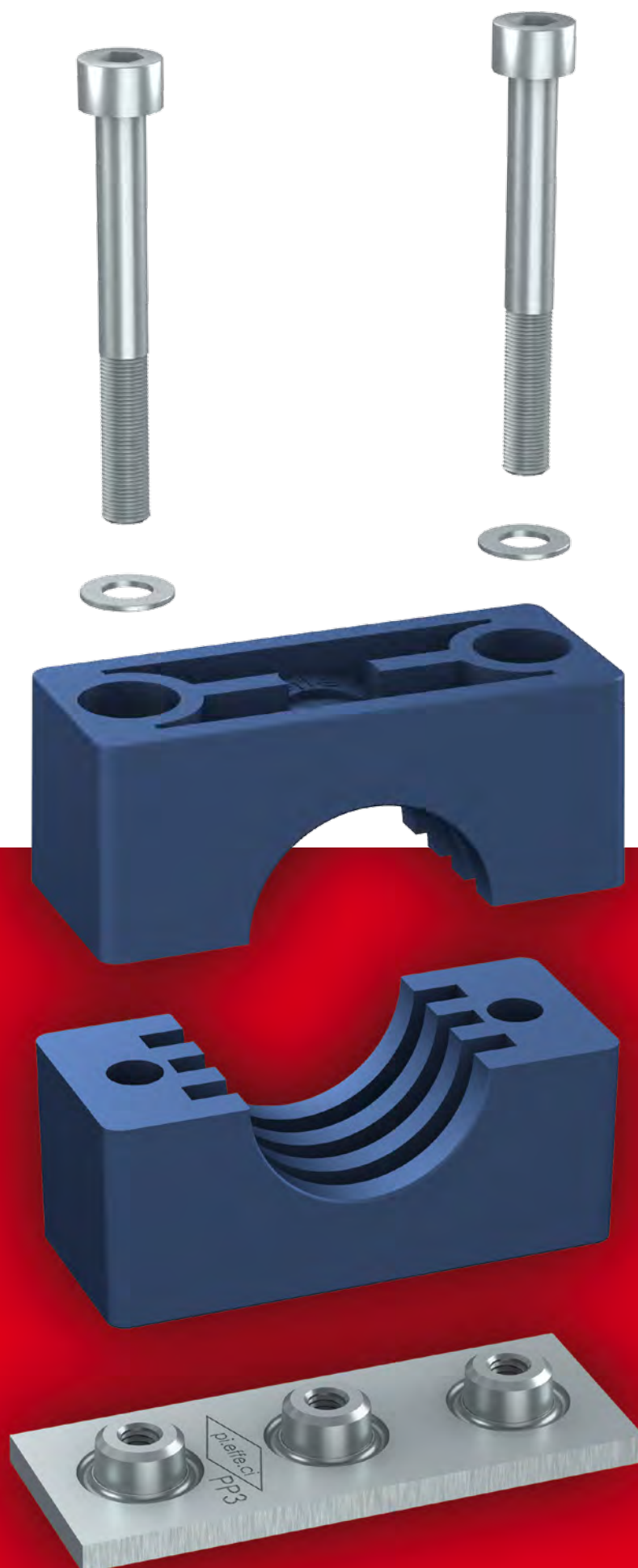
Stainless Steel Inox 316L (X2 CrNiMo 17-12-2) 1.4404
marked with X identification code.

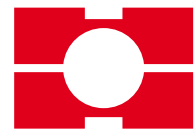
The **BB** track is treated with zinc-plating SENDZIMIR.
The **BBP** track is treated with zinc-coating Fe Zn c8 II.

Metric thread: code **M**
UNC thread: code **UNC**.

For Material Characteristics, see Technical Appendix (page 143).







PIPE CLAMPS **SPECIAL SERIES**

PIPE CLAMPS
SPECIAL SERIES

67

CLAMP BODY STANDARD MATERIALS



Polypropylene
Colour **Blue**
Code **PP**

**OTHER COLOURS
AVAILABLE ON DEMAND!**



Polyamide
Colour **Black**
Code **PA**



Rubber Elastomer
Colour **Black**
Code **GM**



Self-extinguishing Polypropylene
Colour **White**
Code **AU**

DIFFERENT DAMETERS AND MATERIALS AVAILABLE ON REQUEST.

Clamp body internal surface:
profiled

For Material Characteristics, see Technical Appendix (page 143).

COMPONENTS AND ACCESSORIES STANDARD MATERIALS

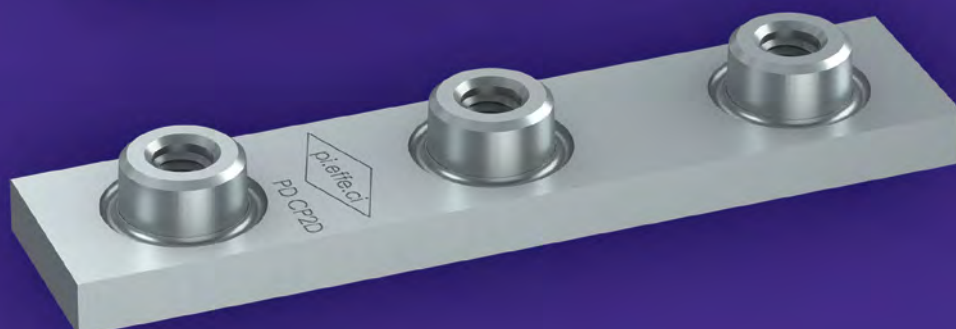
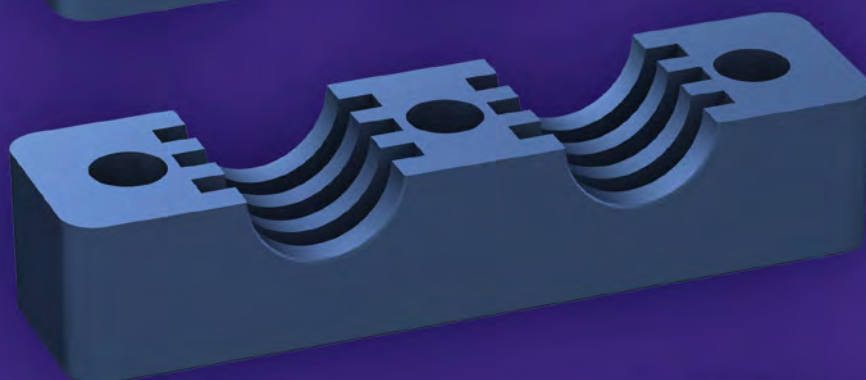
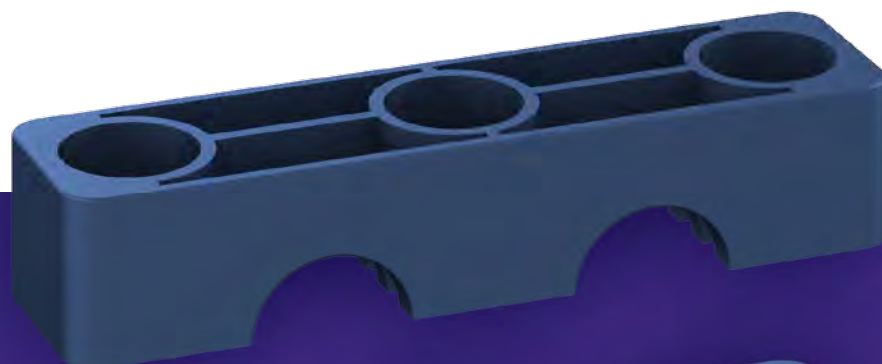
Carbon Steel S 235 JR with finishing surface in white zinc-coated
Fe Zn c8 II.
Untreated are available on request.

Stainless Steel Inox 316L (X2 CrNiMo 17-12-2) 1.4404
marked with **X** identification code.

Metric thread: code **M**
UNC thread: code **UNC**.

For Material Characteristics, see Technical Appendix (page 143).







PIPE CLAMPS **HEAVY SERIES TWIN DESIGN**

75

CLAMP BODY STANDARD MATERIALS



Polypropylene
Colour **Blue**
Code **PP**

**OTHER COLOURS
AVAILABLE ON DEMAND!**



Polyamide
Colour **Black**
Code **PA**



Self-extinguishing Polypropylene
Colour **White**
Code **AU**

DIFFERENT DAMETERS AND MATERIALS AVAILABLE ON REQUEST.

ON REQUEST, ANY CLAMP BODY CAN BE SUPPLIED
WITH TWO DIFFERENT DIAMETERS.

Clamp body internal surface:
profiled

For Material Characteristics, see Technical Appendix (page 143).

COMPONENTS AND ACCESSORIES STANDARD MATERIALS

Carbon Steel S 275 JR with finishing surface in white zinc-coated
Fe Zn c8 II.

Untreated are available on request.

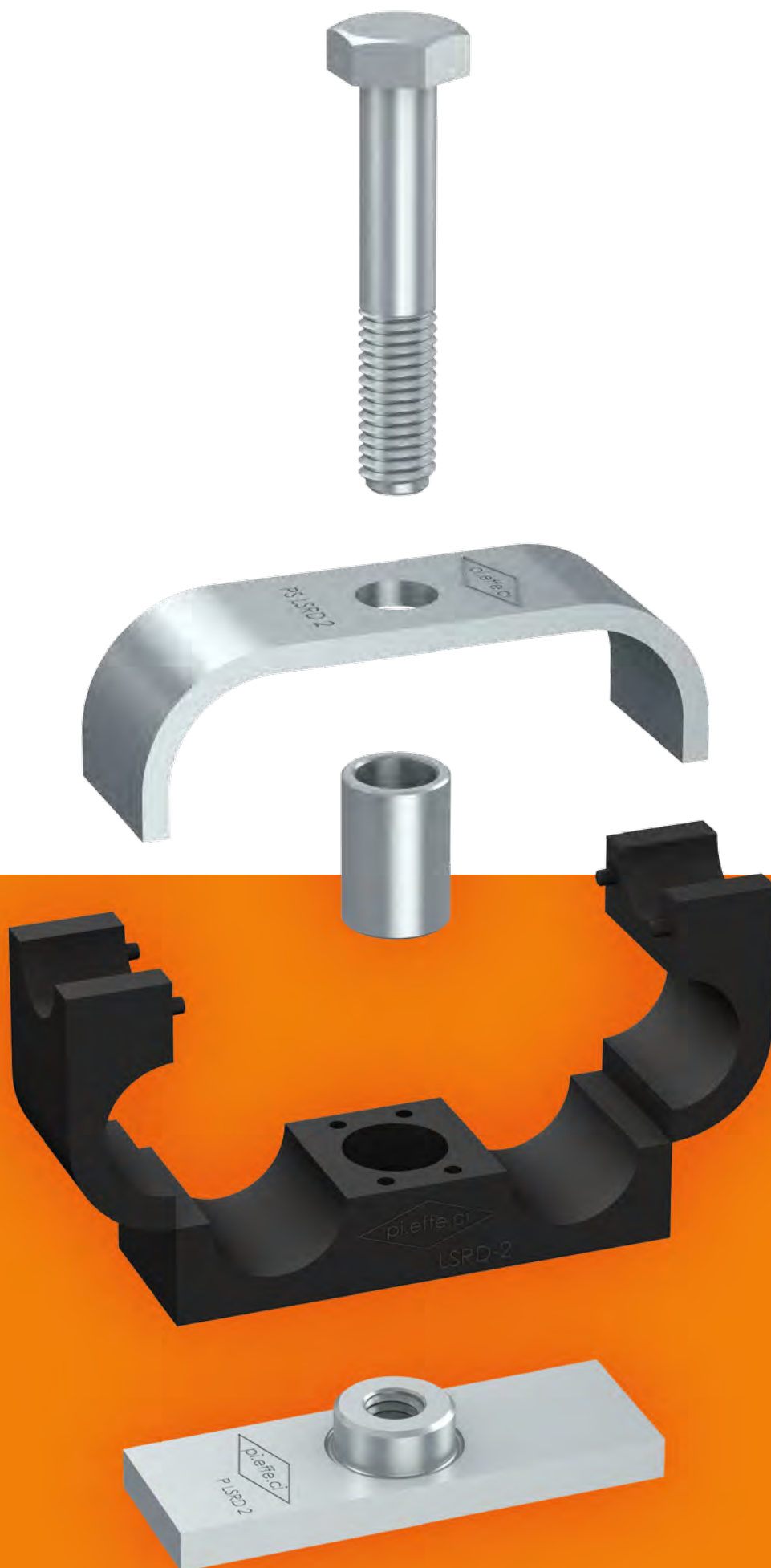
Stainless Steel Inox 316L (X2 CrNiMo 17-12-2) 1.4404
marked with **X** identification code.

The **BBP** track is treated with zinc-coating Fe Zn c8 II.

Metric thread: code **M**
UNC thread: code **UNC**.

For Material Characteristics, see Technical Appendix (page 143).







PIPE CLAMPS **LIGHT SERIES**

PIPE CLAMPS
LIGHT SERIES

85

CLAMP BODY STANDARD MATERIALS



Polypropylene
Colour **Blue**
Code **PP**

**OTHER COLOURS
AVAILABLE ON DEMAND!**



Self-extinguishing Polypropylene
Colour **White**
Code **AU**



Rubber Elastomer
Colour **Black**
Code **GM**

DIFFERENT DIAMETERS AND MATERIALS AVAILABLE ON REQUEST.

ON REQUEST, ANY CLAMP BODY CAN BE SUPPLIED
WITH TWO DIFFERENT DIAMETERS.

Clamp body internal surface:
Smooth (A, B, C, LSRA, LSRD)
Profiled (LS, LSCF)

For Material Characteristics, see Technical Appendix (page 143).

COMPONENTS AND ACCESSORIES STANDARD MATERIALS

Carbon Steel S 235 JR with finishing surface in white zinc-coated
Fe Zn c8 II.

Untreated are available on request.

DIFFERENT MATERIALS AVAILABLE ON REQUEST.

The **BB** track is treated with zinc-plating SENDZIMIR.

Metric thread: code **M**
UNC thread: code **UNC**.

For Material Characteristics, see Technical Appendix (page 143).



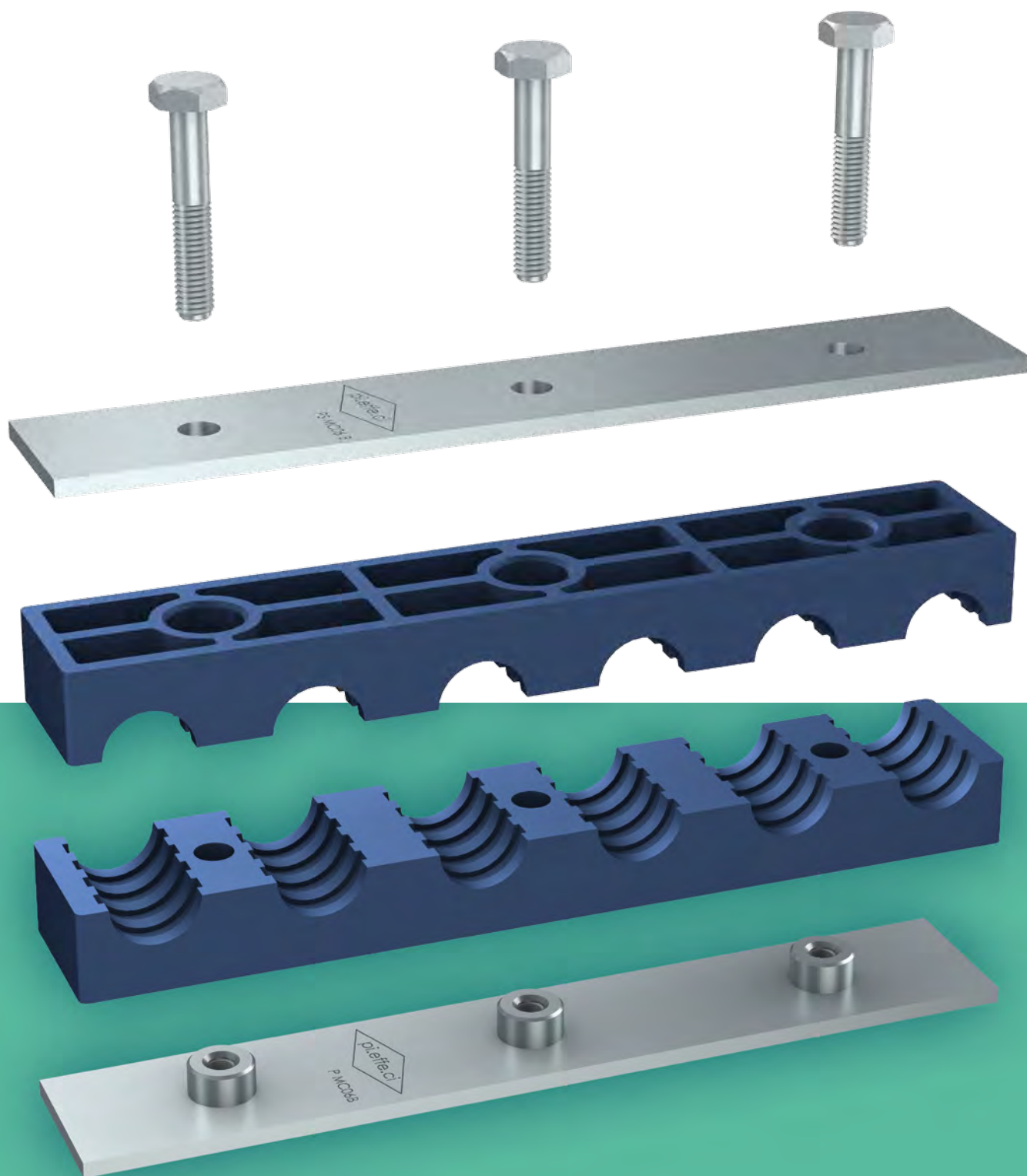


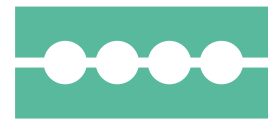
PIPE CLAMPS **MULTI SERIES**

Order Codes and Dimensions (mm/in)

PIPE CLAMPS **MULTI SERIES**

100





PIPE CLAMPS **MULTI SERIES**

PIPE CLAMPS
MULTI SERIES

101

CLAMP BODY STANDARD MATERIALS



Polypropylene
Colour **Blue**
Code **PP**

**OTHER COLOURS
AVAILABLE ON DEMAND!**



Polyamide
Colour **Black**
Code **PA**



Self-extinguishing Polypropylene
Colour **White**
Code **AU**

DIFFERENT DAMETERS AND MATERIALS AVAILABLE ON REQUEST.

**ON REQUEST, ANY CLAMP BODY CAN BE SUPPLIED
WITH DIFFERENT DIAMETERS.**

Clamp body internal surface **Profiled**.

For Material Characteristics, see Technical Appendix (page 143).

COMPONENTS AND ACCESSORIES STANDARD MATERIALS

Carbon Steel S 235 JR with finishing surface in white zinc-coated
Fe Zn c8 II.

Untreated are available on request.

Stainless Steel Inox 316L (X2 CrNiMo 17-12-2) 1.4404
marked with X identification code.

Metric thread: code **M**
UNC thread: code **UNC**.

For Material Characteristics, see Technical Appendix (page 143).





CUSTOM DESIGNED PIPE CLAMPS

CUSTOM DESIGNED
PIPE CLAMPS

112





CUSTOM DESIGNED PIPE CLAMPS

113



REQUIRE A CUSTOMIZED PRODUCTION

Use this QR Codice: our online form
is ready for you!

Pi.effe.ci. Custom Designed Clamps meet the most specific needs of customers who need clamps or special accessories for design, use, or material.

Thanks to the internal design center, Pi.effe.ci. manufactures mechanical clamps for fixing pipes, hoses, electrical cables as well as other accessories, according to customer specifications.

For limited production and prototyping, Pi.effe.ci. produces clamps in the most used plastic materials, such as PTFE, PP and PA, as well as in other plastic and ferrous materials, on the Customer's request. Even components and accessories can be made with special materials and shapes.

For continuous supplies or long runs, Pi.effe.ci. designs and manufactures molds for special clamps, producing them internally in standard materials (Polypropylene, Polyamide, Rubber or Aluminum) or special materials on request.

The products presented on the following pages represent just a sample of the latest projects on specific requests of customers.

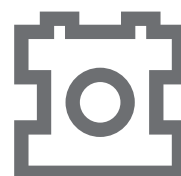


PIPE CLAMPS
SUPER HEAVYWEIGHT SERIES

PIPE CLAMPS **SUPER HEAVYWEIGHT SERIES**
Order Codes and Dimensions (mm/in)

116





PIPE CLAMPS **SUPER HEAVYWEIGHT SERIES**

117

CLAMP BODY STANDARD MATERIALS



Carbon Steel S 275 JR
Electro-welded clamp with U profile NP 140
Finishing Zinc Plated Fe Zn c8 II

DIFFERENT DAMETERS AND MATERIALS AVAILABLE ON REQUEST.

For Material Characteristics, see Technical Appendix (page 143).

COMPONENTS AND ACCESSORIES STANDARD MATERIALS

Steel brace in Carbon Steel C45
Surface finishing Zinc Plated Fe Zn c8 II

Nut M30
Surface finishing Zinc Plated

Plastic pads in Polypropylene

Elongated plate PL inserts on request
CarbonSteel S 275 JR

For Material Characteristics, see Technical Appendix (page 143).

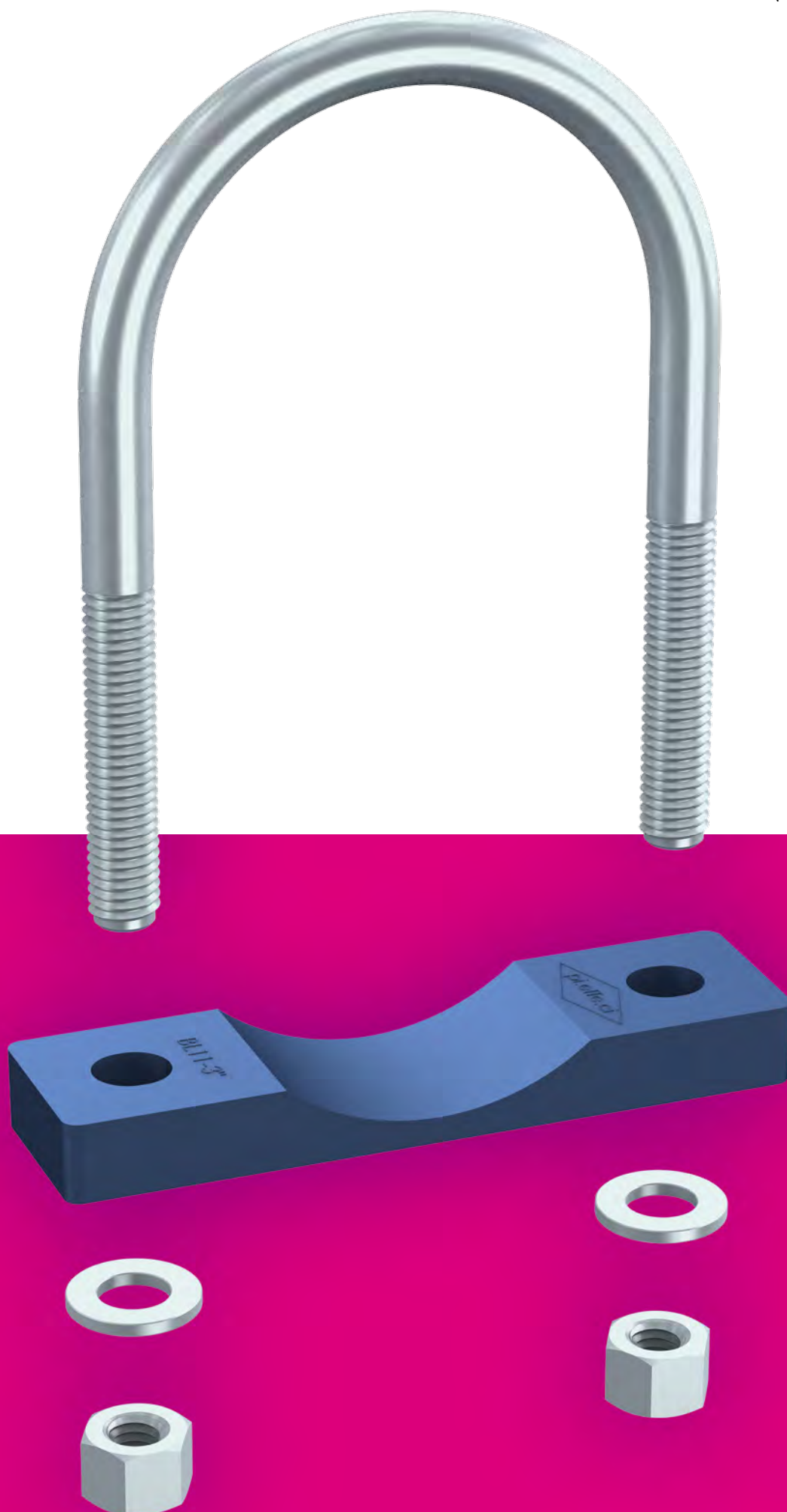




PIPE CLAMPS
U-BOLT SERIES

PIPE CLAMPS **U-BOLT SERIES**
Order Codes and Dimensions (mm/in)

122





PIPE CLAMPS **U-BOLT SERIES**

PIPE CLAMPS
U-BOLT SERIES

123

CLAMP BODY STANDARD MATERIALS



Carbon Steel S 275 JR
Finishing **Zinc Plated**
Code **CL - CM - CP - CD - CQL - CQM - CQP - CQR**



Stainless Steel AISI 304L
Finishing **Washed**
Code **XCL - XCP**



Stainless Steel AISI 316L
Finishing **Washed**
Code **XCM**



Carbon Steel S 275 JR
Finishing **Crapal**
Code **CZF**



**Galvanized Hexavalent
Chromium-free Steel S 235 JR**
Code **CFP**

DIFFERENT DAMETERS AVAILABLE ON REQUEST.

For Material Characteristics, see Technical Appendix (page 143).

COMPONENTS AND ACCESSORIES STANDARD MATERIALS

Plastic pipe saddle (on request)
material Polypropylene (PP) or Polyamide (PA)

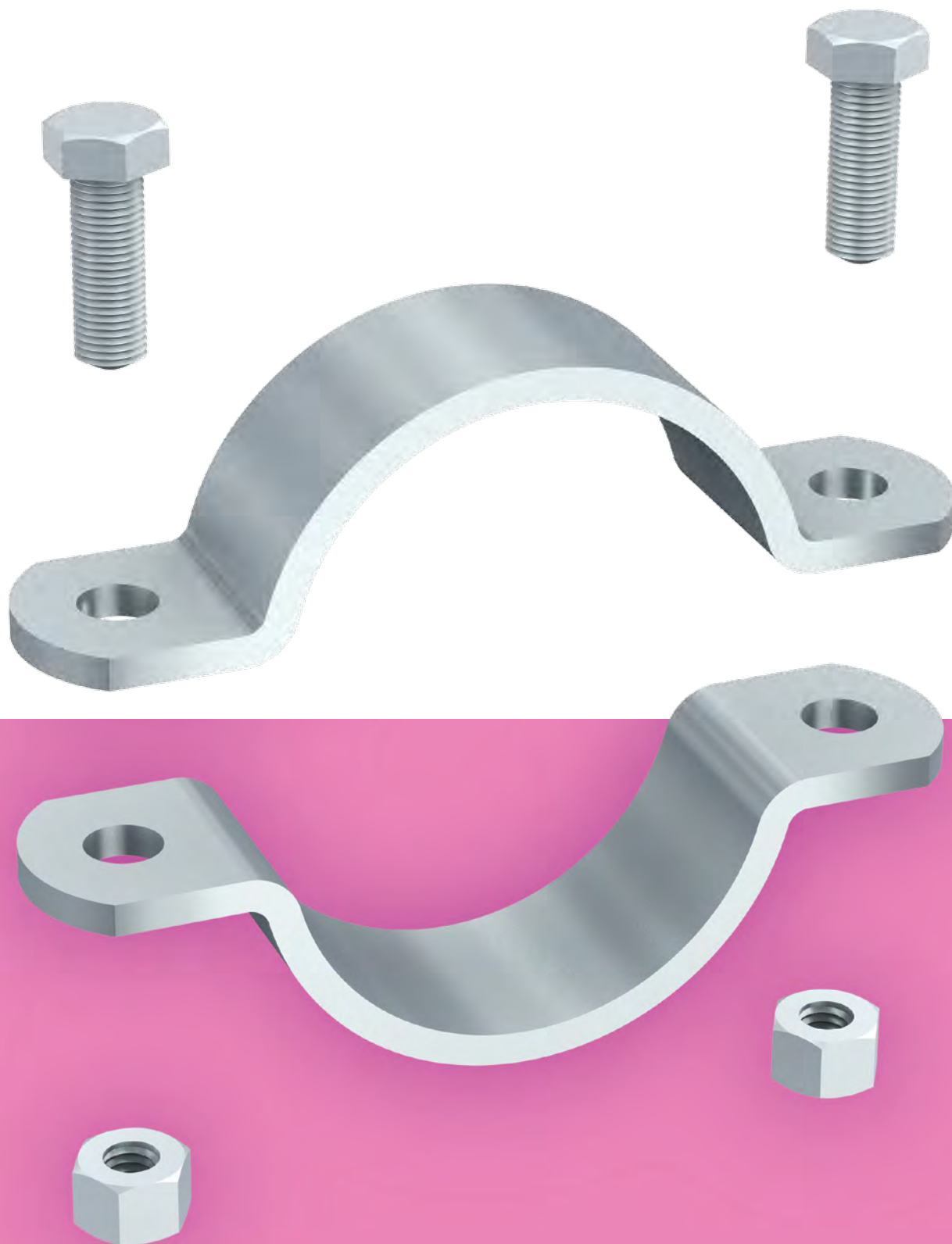
CL - CM - CP U-Bolts are supplied with 2 bolts and 2 washers.

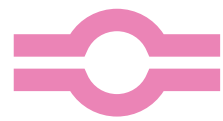
CD U-Bolts are supplied with 4 nuts and 2 washers.

CFP U-Bolts are supplied with 2 nuts and 2 screws.

For Material Characteristics, see Technical Appendix (page 143).







PIPE CLAMPS **METAL DIN SERIES**

PIPE CLAMPS
METAL DIN SERIES

135

CLAMP BODY STANDARD MATERIALS



Carbon Steel S 235 JR
Code G



Galvanized Hexavalent Chromium-free Steel S 235 JR
Code Z



Stainless Steel AISI 304
Code A2



Stainless Steel AISI 316L
Code A4

DIFFERENT DAMETERS AVAILABLE ON REQUEST.

For Material Characteristics, see Technical Appendix (page 143).





A WORLDWIDE PRESENCE

PI.EFFE.CI. SRL

MAIN OFFICE AND PRODUCTION

Via G. Sidoli 11/A
43123 Parma
ITALIA

SUBSIDIARY AND PRODUCTION

Via G. Marconi 76/A
43123 Parma
ITALIA

CONTACTS

Tel. +39 0521 242676
Fax +39 0521 242861

info@pieffeci.com

www.pieffeci.com

