



# PIPE CLAMPS **LIGHT SERIES**

PIPE CLAMPS  
**LIGHT SERIES**

85

## CLAMP BODY STANDARD MATERIALS



**Polypropylene**  
Colour **Blue** .....  
Code **PP**

**OTHER COLOURS  
AVAILABLE ON DEMAND!**



**Self-extinguishing Polypropylene**  
Colour **White**  
Code **AU**



**Rubber Elastomer**  
Colour **Black**  
Code **GM**

DIFFERENT DIAMETERS AND MATERIALS AVAILABLE ON REQUEST.

ON REQUEST, ANY CLAMP BODY CAN BE SUPPLIED  
WITH TWO DIFFERENT DIAMETERS.

Clamp body internal surface:  
**Smooth** (A, B, C, LSRA, LSRD)  
**Profiled** (LS, LSCF)

For Material Characteristics, see Technical Appendix (page 143).

## COMPONENTS AND ACCESSORIES STANDARD MATERIALS

**Carbon Steel S 235 JR** with finishing surface in white zinc-coated  
Fe Zn c8 II.

**Untreated** are available on request.

DIFFERENT MATERIALS AVAILABLE ON REQUEST.

The **BB** track is treated with zinc-plating SENDZIMIR.

**Metric thread:** code **M**  
**UNC thread:** code **UNC**.

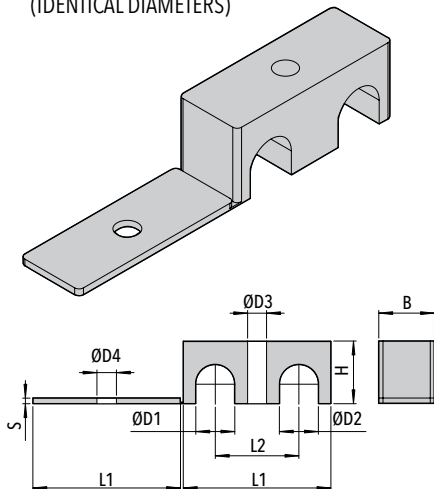
For Material Characteristics, see Technical Appendix (page 143).



# A

## CLAMP BODY

(IDENTICAL DIAMETERS)



Code A (PP - AU)

**ORDER EXAMPLE**

A - 6 - 6 - PP

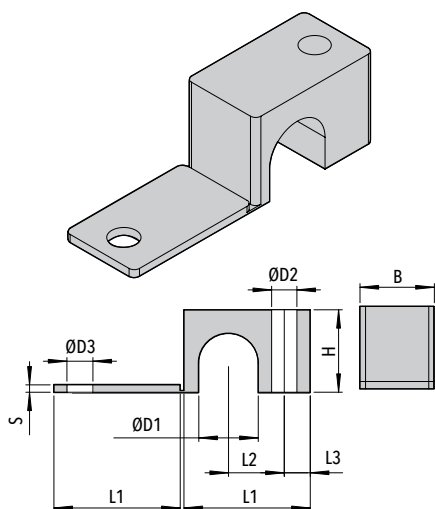
Code	O.D. ØD1 / ØD2		L1	L2	B	H	S	ØD3	ØD4
	mm	nominal bore pipe in							
4									
6			31 (1.22")	18 (.71")	12,8 (.50")	10,5 (.41")	2 (.08")	6,8 (.27")	7 (.28")
8									
9,5		3/8"							
10		1/8"	39 (1.54")	22 (.87")	16 (.63")	15 (.59")	2 (.08")	6,8 (.27")	7 (.28")
12									
12,7		1/2"							
13,5		1/4"							
14									
15			53 (2.09")	30 (1.18")	20 (.79")	22,5 (.89")	2 (.08")	6,8 (.27")	7 (.28")
16		5/8"							
17,2		3/8"							
18									
19		3/4"							
20									
21,3		1/2"	70 (2.76")	38 (1.50")	20 (.79")	30 (1.18")	2 (.08")	6,8 (.27")	7 (.28")
22		7/8"							
25,4		1"							

A

86

# B

## CLAMP BODY



Code B (PP - AU)

**ORDER EXAMPLE**

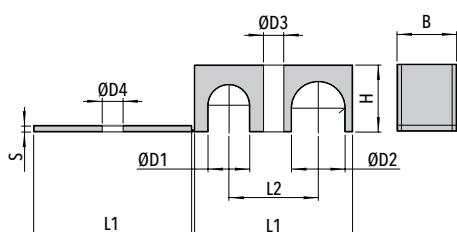
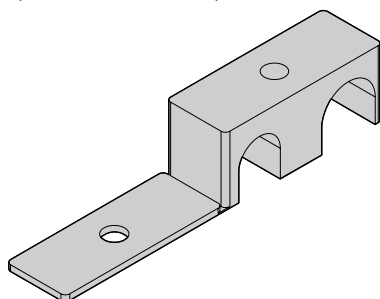
B - 10 - PP

Code	Outside Diameter ØD1		L1	L2	L3	B	H	S	ØD2	ØD3
	mm	nominal bore pipe in								
4										
6			22 (.87")	9 (.35")	6,5 (.26")	12,8 (.50")	10,5 (.41")	2 (.08")	6,8 (.27")	7 (.28")
8										
9,5		3/8"								
10		1/8"	27 (1.06")	11 (.43")	7 (.28")	16 (.63")	15 (.59")	2 (.08")	6,8 (.27")	7 (.28")
12										
12,7		1/2"								
13,5		1/4"								
14										
15			34 (1.34")	15 (.59")	7 (.28")	20 (.79")	22,5 (.89")	2 (.08")	6,8 (.27")	7 (.28")
16		5/8"								
17,2		3/8"								
18										
19		3/4"								
20										
21,3		1/2"	42 (1.65")	19 (.75")	7 (.28")	20 (.79")	30 (1.18")	2 (.08")	6,8 (.27")	7 (.28")
22		7/8"								
25,4		1"								

A

# C CLAMP BODY

(DIFFERENT DIAMETERS)



Code C (PP - AU)

C

PIPE CLAMPS  
**LIGHT SERIES**

87

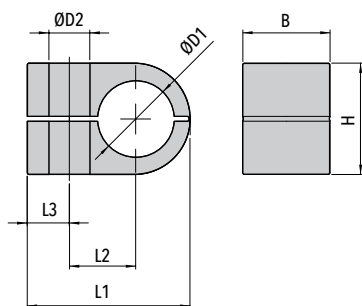
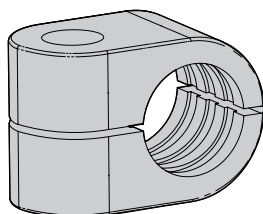
Code	O.D. ØD1 / ØD2			L1	L2	B	H	S	ØD3	ØD4
	nominal mm	bore in	pipe							
C	4-6									
	4-8			31 (1.22")	18 (.71")	12,8 (.47")	10,5 (.41")	2 (.08")	6,8 (.27")	7 (.28")
	6-8									
	10-9,5	1/8"	3/8"							
	12-9,5		3/8"	39 (1.54")	22 (.87")	16 (.63")	15 (.59")	2 (.08")	6,8 (.27")	7 (.28")
	10-12	1/8"								
	13,5-12,7	1/4"	1/2"							
	14-12,7		1/2"							
	15-12,7		1/2"							
	16-12,7		1/2"							
	17,2-12,7	3/8"	1/2"							
	18-12,7		1/2"							
	13,5-14	1/4"								
	13,5-15	1/4"								
	13,5-16	1/4"	5/8"							
	13,5-17,2	1/4"-3/8"								
	13,5-18	1/4"		53 (2.09")	30 (1.18")	20 (.79")	22,5 (.89")	2 (.08")	6,8 (.27")	7 (.28")
	14-15									
	14-16		5/8"							
	17,2-14	3/8"								
	14-18									
	15-16		5/8"							
	17,2-15	3/8"								
	15-18									
17,2-16	3/8"	5/8"								
16-18										
17,2-18	3/8"									
20-19		3/4"								
21,3-19	1/2"	3/4"								
22-19		7/8"-3/4"								
25,4-19		1"-3/4"								
21,3-20	1/2"		70 (2.76")	38 (1.5")	20 (.79")	30 (1.18")	2 (.08")	6,8 (.27")	7 (.28")	
22-20		7/8"								
21,3-22	1/2"	7/8"								
21,3-25,4	1/2"	1"								
22-25,4		7/8"-1								

**ORDER EXAMPLE**

C - 15-12,7 - PP



# LS CLAMP BODY



Code LS (PP - AU)

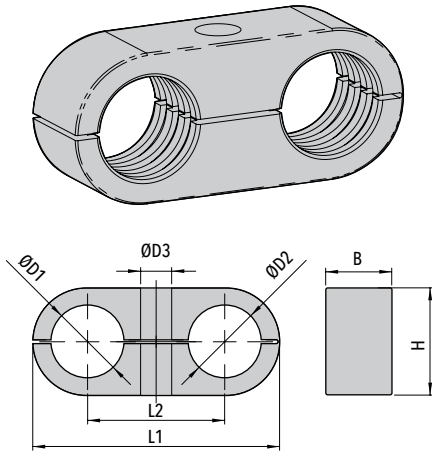
**ORDER EXAMPLE**

LS2 - 10 - PP

PIPE CLAMPS **LIGHT SERIES**  
Order Codes and Dimensions (mm/in)

Code	Outside Diameter ØD1		L1	L2	L3	B	H	ØD2
	mm	nominal bore pipe in						
LS1	6							
	6,4	1/4"	22 (.87")	9 (.35")	7 (.28")	14,5 (.57")	13,5 (.53")	6,8 (.27")
	8	5/16"						
LS2	8	5/16"						
	9,5	3/8"						
	10	1/8"	27 (1.06")	11 (.43")	7 (.28")	14,5 (.57")	18,5 (.73")	6,8 (.27")
	12							
	12,7	1/2"						
LS3	10	1/8"						
	12							
	12,7	1/2"						
	13,5	1/4"	33 (1.30")	15 (.59")	7 (.28")	14,5 (.57")	23,5 (.93")	6,8 (.27")
	14							
	15							
	16	5/8"						
LS4	14							
	15							
	16	5/8"						
	17,2	3/8"						
	18		40 (1.57")	19 (.75")	7 (.28")	14,5 (.57")	30,5 (1.20")	6,8 (.27")
	19	3/4"						
	20							
	21,3	1/2"						
	22	7/8"						

# LSCF CLAMP BODY



Code LSCF (PP - AU)

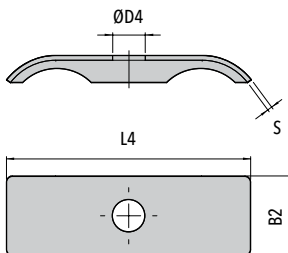
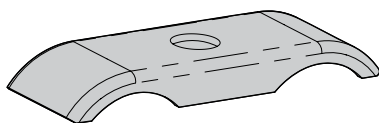
## ORDER EXAMPLE

LSCF3 - 15 - PP

Code	O.D. ØD1 / ØD2			L1	L2	B	H	ØD3
	mm	nominal bore pipe	in					
LSCF1	6							
	6,4	1/4"		32 (1.26")	18 (.70")	14,5 (.57")	13,5 (.53")	6,8 (.27")
	8	5/16"						
LSCF2	8	5/16"						
	9,5	3/8"						
	10	1/8"		41 (1.61")	22 (.86")	14,5 (.57")	18,5 (.73")	6,8 (.27")
	12							
	12,7	1/2"						
LSCF3	10	1/8"						
	12							
	12,7	1/2"						
	13,5	1/4"		54 (2.13")	30 (1.18")	14,5 (.57")	23,5 (.93")	6,8 (.27")
	14							
	15							
	16	5/8"						
LSCF4	14							
	15							
	16	5/8"						
	17,2	3/8"						
	18			70 (2.76")	38 (1.50")	14,5 (.57")	30,5 (1.20")	6,8 (.27")
	19	3/4"						
	20							
	21,3	1/2"						
	22	7/8"						

PIPE CLAMPS  
**LIGHT SERIES**

# PS LSCF UPPER PLATE

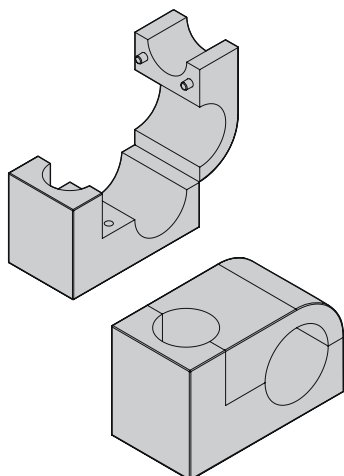


Code PS LSCF (Carbon Steel S 235 JR)

Code	L4	B2	ØD4	S
PS LSCF1	29,5 (1.16")	15,5 (.61")	6,8 (.27")	1 (.04")
PS LSCF2	40 (1.57")	15,5 (.61")	6,8 (.27")	1 (.04")
PS LSCF3	51 (2.01")	16 (.63")	6,8 (.27")	1 (.04")
PS LSCF4	63,5 (2.50")	16 (.63")	6,8 (.27")	1 (.04")

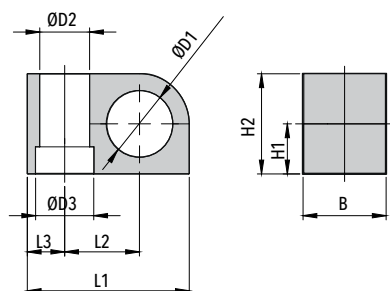


# LSRA CLAMP BODY



90

Code LSRA (Material GM)



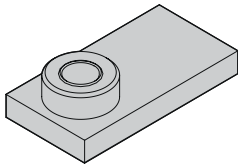
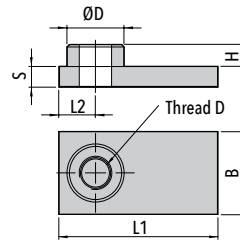
## ORDER EXAMPLE

LSRA2 - 12 - GM

## PIPE CLAMPS **LIGHT SERIES** Order Codes and Dimensions (mm/in)

Code	Outside Diameter ØD1		ØD2	ØD3	L1	L2	L3	H1	H2	B
	mm	nominal bore pipe in								
LSRA1	6									
	6,4	1/4"								
	8	5/16"								
	9,5	3/8"								
	10	1/8"	12 (.47")	14 (.55")	34 (1.34")	15 (.59")	9 (.35")	10 (.39")	20 (.79")	20 (.79")
	11									
	12									
	12,7	1/2"								
	4									
	6									
LSRA2	6,4	1/4"								
	8	5/16"								
	9,5	3/8"								
	10	1/8"								
	11									
	12									
	12,7	1/2"	12 (.47")	14 (.55")	39 (1.54")	18 (.71")	9 (.35")	12 (.47")	24 (.94")	20 (.79")
	13,5	1/4"								
	14									
	15									
LSRA3	16	5/8"								
	17,2	3/8"								
	18									
	19	3/4"								
	20									
	21,3	1/2"								
	22	7/8"								
	23									
	25		12 (.47")	14 (.55")	57,5 (2.26")	23,5 (.93")	15 (.59")	20 (.79")	40 (1.57")	30 (1.18")
	25,4	1"								
LSRA3	28									
	30									
	32	1,1/4"								

# PLSRA WELD PLATE



Code	Thread D	L1	L2	B	H	S	ØD
------	-------------	----	----	---	---	---	----

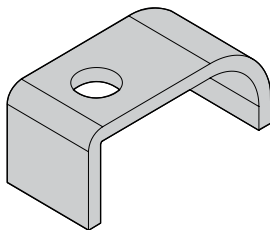
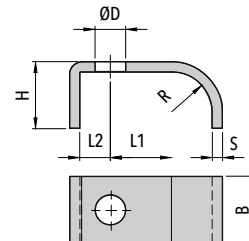
<b>PLSRA1</b>	M8 (5/16-18 UNC)	34 (1.34")	9 (.35")	20 (.79")	6 (.23")	5 (.20")	14 (.55")
---------------	---------------------	---------------	-------------	--------------	-------------	-------------	--------------

<b>PLSRA2</b>	M8 (5/16-18 UNC)	39 (1.54")	9 (.35")	20 (.79")	6 (.23")	5 (.20")	14 (.55")
---------------	---------------------	---------------	-------------	--------------	-------------	-------------	--------------

<b>PLSRA3</b>	M8 (5/16-18 UNC)	57,5 (2.26")	15 (.59")	30 (1.18")	6 (.23")	5 (.20")	14 (.55")
---------------	---------------------	-----------------	--------------	---------------	-------------	-------------	--------------

Code **PLSRA** (Carbon Steel S 235 JR)

# PSLSRA UPPER PLATE



Code	L1	L2	B	H	R	S	ØD
------	----	----	---	---	---	---	----

<b>PSLSRA1</b>	15 (.59")	9 (.35")	20 (.79")	16 (.63")	10 (.39")	3 (.12")	9 (.35")
----------------	--------------	-------------	--------------	--------------	--------------	-------------	-------------

<b>PSLSRA2</b>	18 (.71")	9 (.35")	20 (.79")	20 (.79")	12 (.47")	3 (.12")	9 (.35")
----------------	--------------	-------------	--------------	--------------	--------------	-------------	-------------

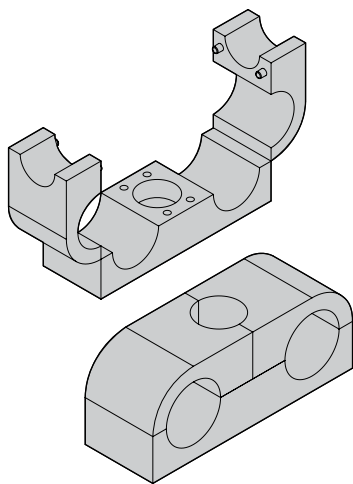
<b>PSLSRA3</b>	23,5 (.93")	15 (.59")	30 (1.18")	28 (1.10")	19,5 (.77")	3 (.12")	9 (.35")
----------------	----------------	--------------	---------------	---------------	----------------	-------------	-------------

Code **PSLSRA** (Carbon Steel S 235 JR)



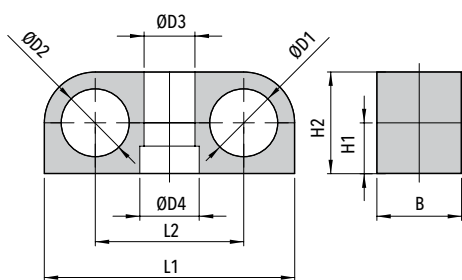


# LSRD CLAMP BODY



92

Code LSRD (Material GM)



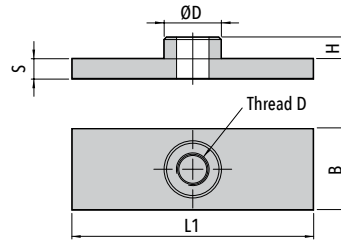
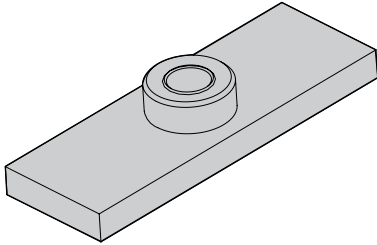
## ORDER EXAMPLE

LSRD3 - 25 - GM

## PIPE CLAMPS **LIGHT SERIES** Order Codes and Dimensions (mm/in)

Code	O.D. ØD1 / ØD2		ØD3	ØD4	L1	L2	H1	H2	B
	mm	nominal bore pipe in							
LSRD1	4								
	6								
	6,4	1/4"							
	8	5/16"							
	9,5	3/8"	12 (.47")	14 (.55")	50 (1.97")	30 (1.18")	10 (.39")	20 (.79")	20 (.79")
	10	1/8"							
	11								
	12								
	12,7	1/2"							
	13,5	1/4"							
LSRD2	14	1/2"	12 (.47")	14 (.55")	59 (2.32")	35 (1.38")	12 (.47")	24 (.94")	20 (.79")
	15								
	16	5/8"							
	17,2	3/8"							
	18								
	19	3/4"							
	20								
	21,3	1/2"							
	22	7/8"							
	23								
LSRD3	25		12 (.47")	14 (.55")	86 (3.39")	47 (1.85")	20 (.79")	40 (1.57")	30 (1.18")
	25,4	1"							
	28								
	30								
	32	1,1/4"							

# PLSRD WELD PLATE



Code	Thread D	L1	B	H	S	ØD
------	----------	----	---	---	---	----

PLSRD1	M8 (5/16-18 UNC)	50 (1.97")	20 (.79")	6 (.23")	5 (.20")	14 (.55")
--------	---------------------	---------------	--------------	-------------	-------------	--------------

PLSRD2	M8 (5/16-18 UNC)	59 (2.32")	20 (.79")	6 (.23")	5 (.20")	14 (.55")
--------	---------------------	---------------	--------------	-------------	-------------	--------------

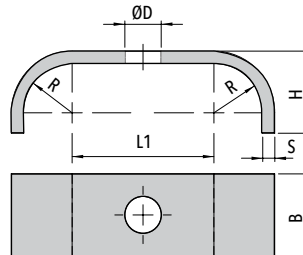
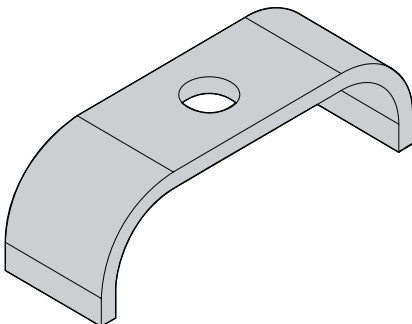
PLSRD3	M8 (5/16-18 UNC)	86 (3.39")	30 (1.18")	6 (.23")	5 (.20")	14 (.55")
--------	---------------------	---------------	---------------	-------------	-------------	--------------

Code PLSRD (Carbon Steel S 235 JR)

PIPE CLAMPS  
**LIGHT SERIES**

93

# PSLSRD UPPER PLATE



Code	L1	B	H	R	S	ØD
------	----	---	---	---	---	----

PSLSRD1	30 (1.18")	20 (.79")	16 (.63")	10 (.39")	3 (.12")	9 (.35")
---------	---------------	--------------	--------------	--------------	-------------	-------------

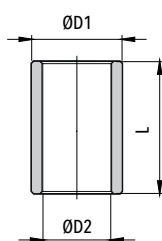
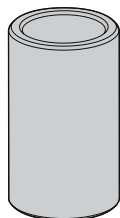
PSLSRD2	35 (1.38")	20 (.79")	20 (.79")	12 (.47")	3 (.12")	9 (.35")
---------	---------------	--------------	--------------	--------------	-------------	-------------

PSLSRD3	47 (1.85")	30 (1.18")	28 (1.10")	19,5 (.77")	3 (.12")	9 (.35")
---------	---------------	---------------	---------------	----------------	-------------	-------------

Code PSLSRD (Carbon Steel S 235 JR)



## D LSR BUSHING



### DC LSR FOR USE WITH MOUNTING RAIL BB

Code	ØD1	ØD2	L
------	-----	-----	---

DC LSR1	12 (.47")	9 (.35")	12,8 (.50")
---------	--------------	-------------	----------------

DC LSR2	12 (.47")	9 (.35")	16,8 (.66")
---------	--------------	-------------	----------------

DC LSR3	12 (.47")	9 (.35")	32,8 (1.29")
---------	--------------	-------------	-----------------

See Mounting Examples  
nn. 7 and 9

### DM LSR FOR USE WITH WELD PLATE PLSRA OR PLSRD

Code	ØD1	ØD2	L
------	-----	-----	---

DM LSR1	12 (.47")	9 (.35")	13,5 (.53")
---------	--------------	-------------	----------------

DM LSR2	12 (.47")	9 (.35")	17,5 (.69")
---------	--------------	-------------	----------------

DM LSR3	12 (.47")	9 (.35")	33,5 (1.32")
---------	--------------	-------------	-----------------

See Mounting Examples  
nn. 6 and 10

### DL LSR FOR USE WITHOUT WELD PLATE

Code	ØD1	ØD2	L
------	-----	-----	---

DL LSR1	12 (.47")	9 (.35")	18,8 (.74")
---------	--------------	-------------	----------------

DL LSR2	12 (.47")	9 (.35")	22,7 (.89")
---------	--------------	-------------	----------------

DL LSR3	12 (.47")	9 (.35")	38,8 (1.53")
---------	--------------	-------------	-----------------

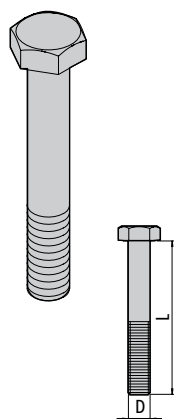
See Mounting Examples  
nn. 5 and 8

Code D LSR (Carbon Steel S 235 JR)

94

## TE HEXAGON HEAD BOLT

ISO 4014 / 4017



### TE C-M FOR USE WITH MOUNTING RAIL BB, WELD PLATE PLSRA OR PLSRD

Code	Thread (D x L)
------	-------------------

M8x25  
(5/16-18 UNCx1")

M8x30  
(5/16-18 UNCx1-1/8")

M8x45  
(5/16-18 UNCx1-3/4")

### TE L FOR USE WITHOUT WELD PLATE

Code	Thread (D x L)
------	-------------------

M8x30  
(5/16-18 UNCx1-1/4")

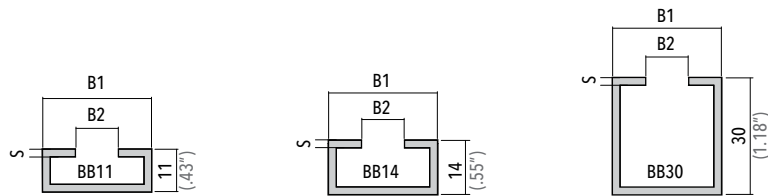
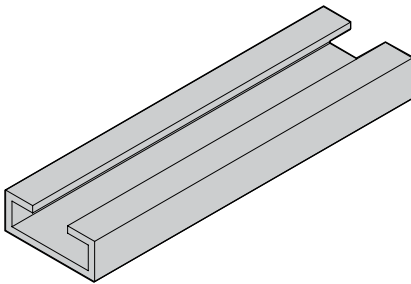
M8x35  
(5/16-18 UNCx1-3/8")

M8x50  
(5/16-18 UNCx2")

Code TE (Steel 8.8)

# BB MOUNTING RAIL

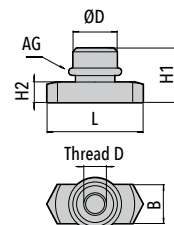
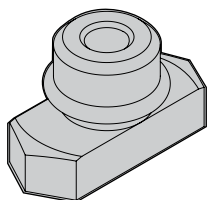
AVAILABLE HEIGHTS 11 / 14 / 30 mm  
AVAILABLE LENGTH 2 m



Code	B1	B2	S
<b>BB</b> <b>XBB</b>	28 (1.10")	11 (.43")	2 (.08")

Code **BB** (Steel DX51D)  
Code **XBB** (Stainless Steel AISI 316L)

# DF+AG RAIL NUT WITH RUBBER RING

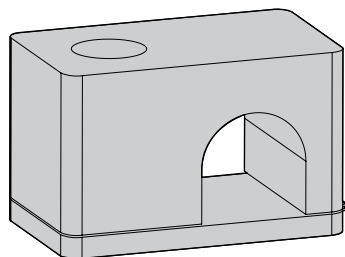


Code	Thread D	L	B	H1	H2	ØD	AG
<b>DF</b> <b>XDF</b>	M8 (5/16-18 UNC)	25,5 (1.00")	10,4 (.41")	13,5 (.53")	5 (.20")	13,8 (.54")	10x2,2 (.39"x.08")

Code **DF** (Steel C20)  
Code **XDF** (Stainless Steel AISI 316L)

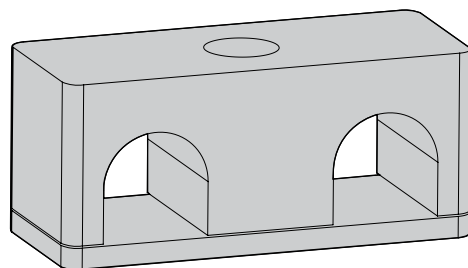
### MOUNTING EXAMPLE 01

Mounting Example of clamp Type B 10 PP in Polypropylene for pipe with outside diameter of 10 mm.



### MOUNTING EXAMPLE 02

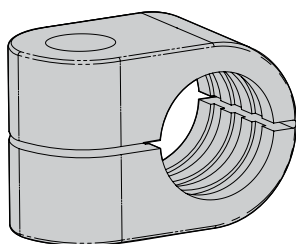
Mounting Example of clamp Type A 10-10 PP in Polypropylene for pipe with outside diameter of 10 mm.



96

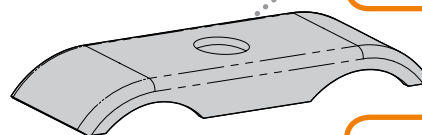
### MOUNTING EXAMPLE 03

Mounting Example of clamp LS1 8 PP in Polypropylene for pipe with outside diameter of 8 mm.

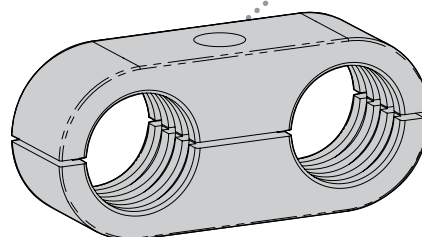


### MOUNTING EXAMPLE 04

Mounting Example of clamp LSCF1 08-08 PP in Polypropylene for pipe with outside diameter of 8 mm with upper plate PS LSCF1.



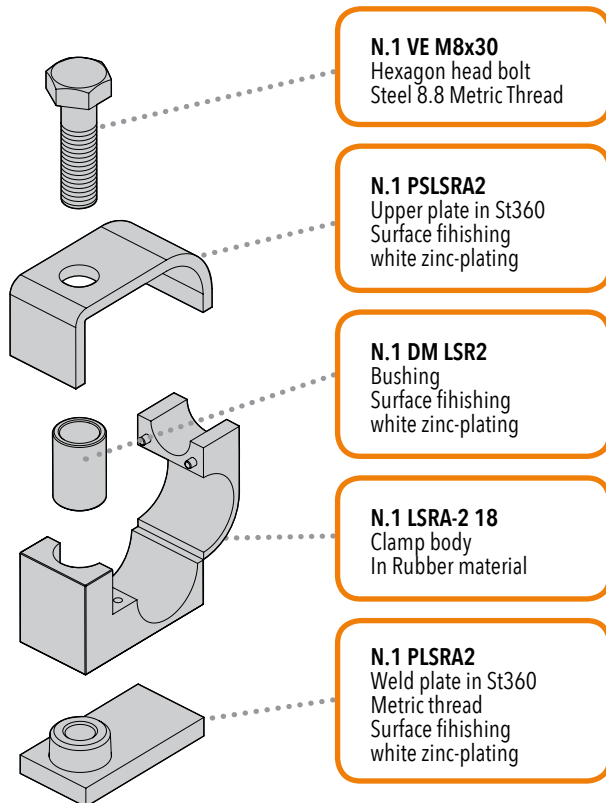
**N.1 PS LSCF1**  
Upper plate  
in Stainless Steel S 235 JR  
Surface finishing  
white zinc-plating



**N.1 LSCF1 08-08PP**  
Clamp body  
in Polypropylene

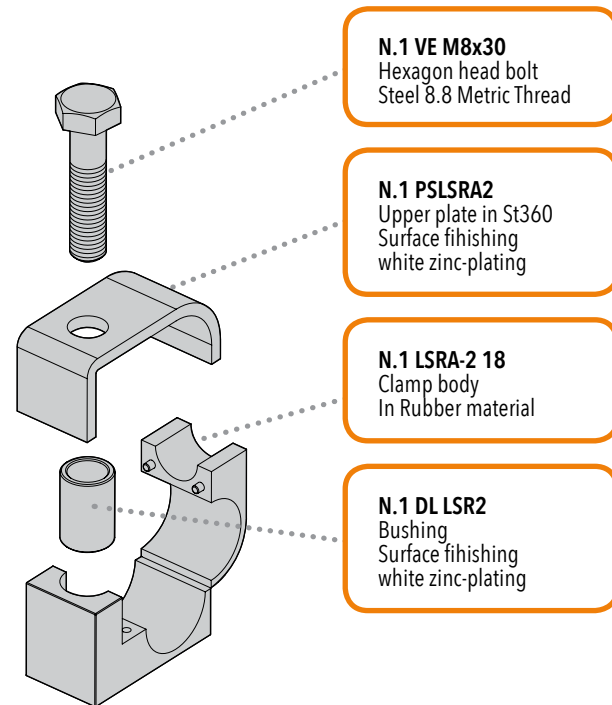
## MOUNTING EXAMPLE 05

Mounting Example clamp LSRA with weld plate.



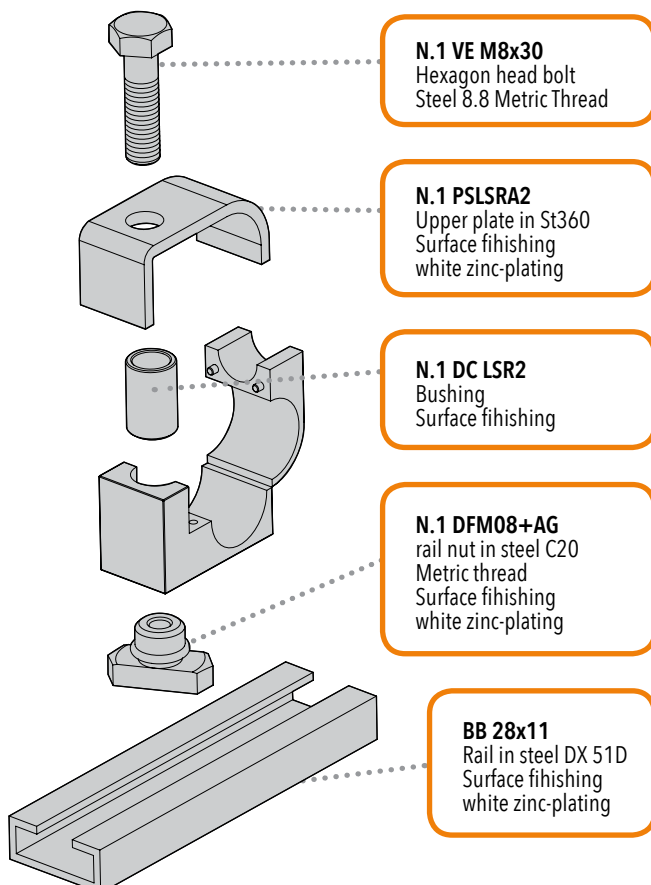
## MOUNTING EXAMPLE 06

Mounting Example clamp LSRA for panel mounting without weld plate or hexagon rail nut.



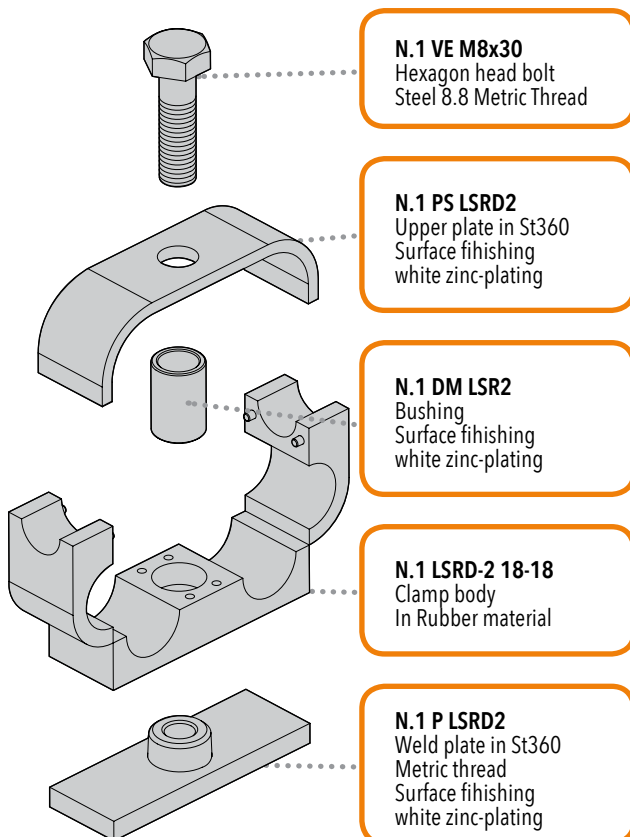
## MOUNTING EXAMPLE 07

Mounting Example clamp LSRA with hexagon rail nut.



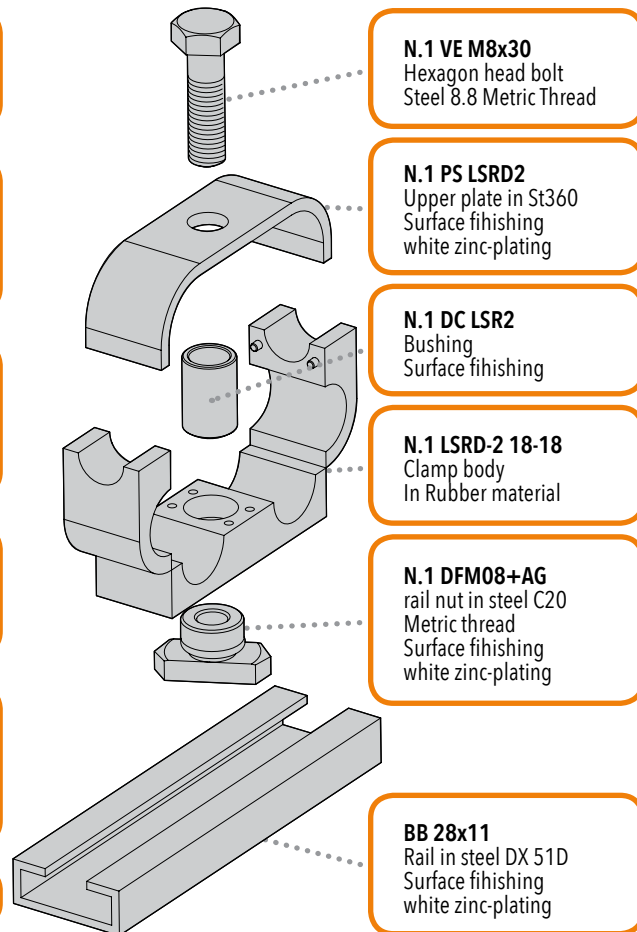
### MOUNTING EXAMPLE 08

Mounting Example clamp LSRD with weld plate.



### MOUNTING EXAMPLE 09

Mounting Example clamp LSRD with hexagon rail nut.



98

### MOUNTING EXAMPLE 10

Mounting Example clamp LSRD for panel mounting without weld plate or hexagon rail nut.

