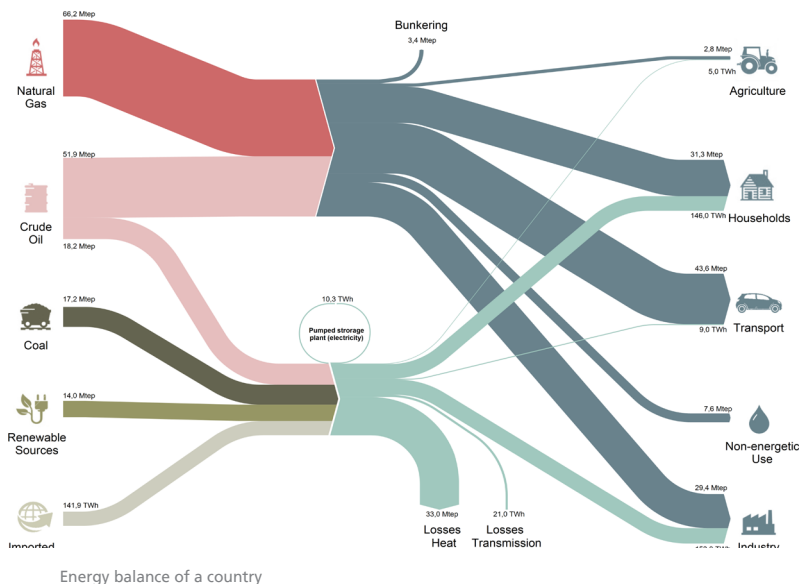


## e!Sankey

Increase efficiency and strengthen your competitive edge with compelling diagrams

Seeing is understanding – this motto was the driving force for Captain Riall Sankey more than 100 years ago. The engineer from Ireland was looking for a way to optimize the operation of steam engines and, in his analysis of thermic efficiency, he visualized material flows with the help of quantity-based arrow diagrams. Today, they're simply called Sankey diagrams. Sankey chose this form of representation because it allowed him to greatly reduce the machine's diagrammatic complexity. And that premise still applies today: all processes involving flows – be it, for example, energy, or material, or money – can

be visualized using Sankey diagrams. The results are processes that are more transparent and easily understood. While Captain Sankey was still wielding his pencil 100 years ago, more than 5,000 customers in over 80 countries are relying today on the power of e!Sankey. The software, which was developed by ifu Hamburg GmbH, includes all the necessary functions to create effective diagrams. This high-performance tool allows businesses to gain a comprehensive understanding of their systems that becomes the basis for pinpointing and implementing process optimization measures.



### The most important features at a glance:

- Graphic editor with zoom function and comprehensive color management for creating powerful Sankey diagrams
- Easy start-up aided by pre-loaded sample diagrams and an extensive suite of drawing functions (incl. functions from other well-known applications)
- Scalable flow quantities based on various units with the option for creating customized units
- option for converting units
- Extensive labeling functions allow high informative value while keeping diagrams easy to understand at a glance
- Export diagrams as BMP, GIF, JPG, PNG or PDF image files for direct tie-in to presentations, reports, and work papers. Includes customizable image quality (low to high definition for web or print applications)
- Incorporate your own images and icons to individualize and specify your diagrams
- Multiple language function and full Unicode support for international application
- e!Sankey pro supports LiveLink to Microsoft Excel, allowing automatic import of flow data from Microsoft Excel documents for dynamic updates of your diagrams

In good company –  
A sampling of e!Sankey users:

- Chemical industry
- Energy consulting and energy management
- Environmental technology
- Waste management
- Logistics
- Transportation
- Public administration
- Water management
- Quality control
- Food industry
- Facility management
- Research and education

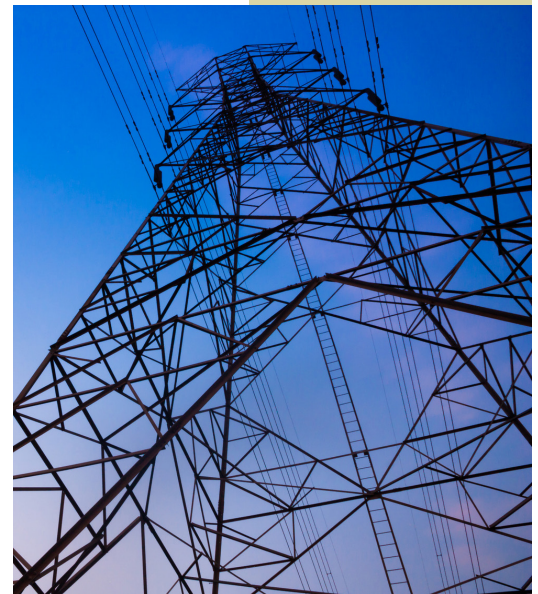
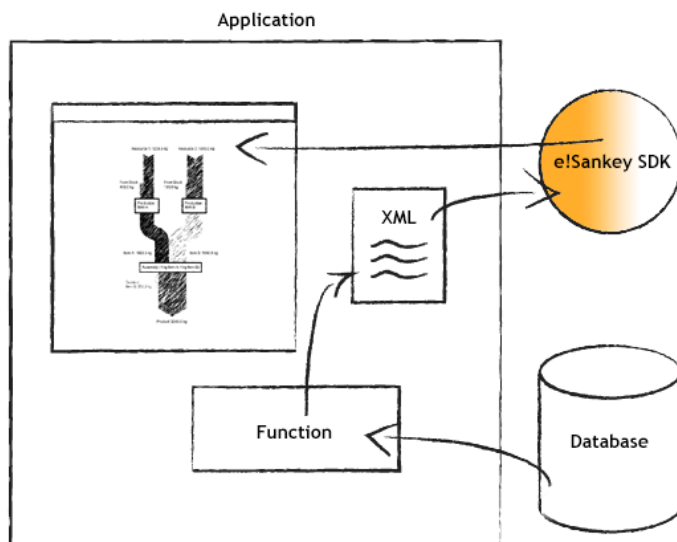
You can download a free,  
14-day trial version at  
<http://go.ifu.com/esankey>

## e!Sankey SDK

Continuously update Sankey diagrams in your applications or on the web

Do you have data on quantity or consumption that update regularly and that you would like represented in Sankey diagrams? Then the automatic update possibilities of e!Sankey SDK is the easy solution for you! This powerful Software Development Kit enables a continuous, up-to-the-minute flow of data to your Sankey diagrams, giving you instant access to the latest data via your applications or

the web. For example, you can visualize the energy used in a given production process nearly in real time – making it easy to identify potential savings. This method can also show material and cost flows quickly in a form that is easy to understand. No matter where your challenges lie, e!Sankey SDK and the competent support of our development team will generate more transparency for your business!



### The most important features at a glance:

#### Sankey diagrams update via CSV files

You can easily attribute text and values in a diagram with the help of a text file using key-value pairs. When your file is read, the program identifies either the flow, inventory or text field attributed to the key and adds the appropriate value.

#### Generate Sankey diagrams via XML files

Using XML files allows you to define units, entries, arrows, and flows. When e!Sankey SDK opens, this file is read as a parameter, resulting in the automated creation of Sankey diagrams.

#### Included in e!Sankey SDK:

- Documentation and examples in C# to explain the Windows.NET interface
- Documentation and examples in Python to explain the COM interface
- Documentation and examples for the use of command lines and Windows services
- All files for your project needed to integrate your own customized Sankey diagrams into your applications

If you are interested in a free and non-binding trial version or have any other questions, please contact us anytime at [sales@e-sankey.com](mailto:sales@e-sankey.com)

We are also available by phone for the clarification of any questions you may have regarding the possible integration of e!Sankey SDK into your system. Just call +49 40 480009-0.