

YUE QING HEYI ELECTRICAL CO.,LTD

ADD:ShangYanHou Village,LiuShi Town,YueQing City,ZheJiang,CHINA

TEL:86-577-62659558

FAX:86-577-62659558

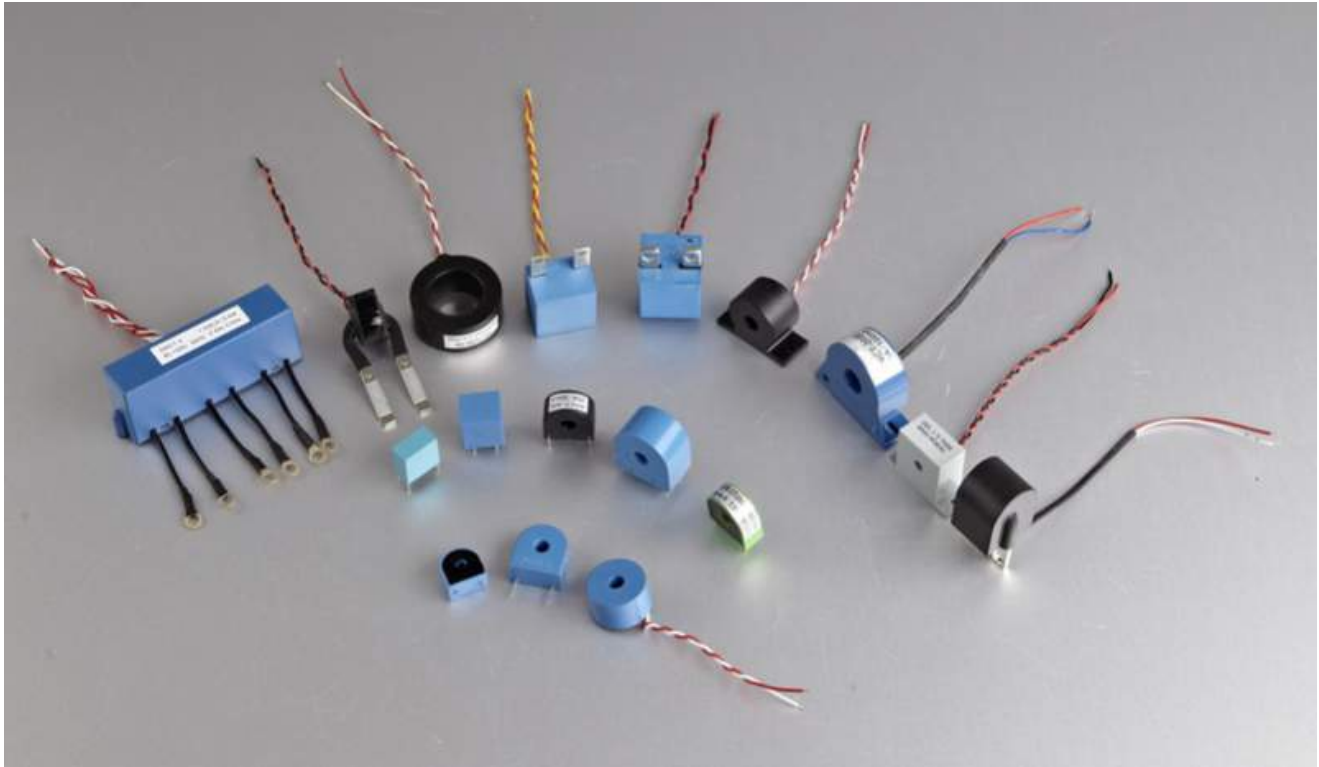
contact :Mrs Bethy

E-mail:heyi@heyielectrical.com

Web:www.transformerfactory.com



Mini CT Series



Mini precision CT range of current transformer includes Load-type ct, Bus bar-type ct, Pin-type ct, DC immune ct and so on. Suitable for a wide range of current, can be applied to test, control, display and record the running of the electrical equipment, and to protect the equipment against the damage, in the AC circuit. Output could be customized.

Features

- Linear output current, high precision
- Small volume, light weight, easy for installation
- Various mechanical dimensions, highly customer-tailored
- Encapsulated with epoxy resin to ensure strong insulation ability

Applications

- Current measurement, monitoring and protection for electrical wiring and equipment.
- Current and power measurement for electric motors, lighting, air compressor, heating and ventilation system, air-condition equipment and automation-control system.
- Current, power and energy monitoring device.
- Relay protection device.

Technique Indes

Electrical Parameter	
Frequency	50-400Hz
Rated Input	0A-250A
Measuring range	5% In-120% In
Rated Output	0-100mA
Ratio	≤ ±0.1%
Phase angle	≤ ±5分
Dielectric strength	2.5KV/1mA/1min
Insulation Resistance	DC500V/100MΩ min

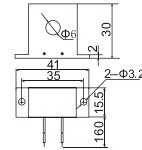
Electrical Parameter	
Case	ABS / UL94-V0
Bobbin	PBT
Core	Permalloy or Nanocrystalline
Internal structure	Epoxy
Construction	PCB
Operating Temp	-25°C~+75°C
Operating Humidity	≤85%
Output Connection	Stitch

Mini CT Series



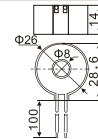
CT001

model	Ratio	Pr. Current	Max. Current	Sec. Current	Sampling voltage	Load Resistance	Class
CT001	5(30)A/5mA	5A	30A	5mA	100mV	20 Ω	0.1
	10(50)A/10mA	10A	50A	10mA	100mV	10 Ω	0.1
	15(60)A/15mA	15A	60A	15mA	75mV	5 Ω	0.1
	30A/30mA	30A	36A	30mA	600mV	20 Ω	0.1
	50A/25mA	50A	60A	25mA	500mV	20 Ω	0.1



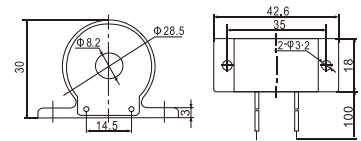
CT003

model	Ratio	Pr. Current	Max. Current	Sec. Current	Sampling voltage	Load Resistance	Class
CT003	5(30)A/5mA	5A	30A	5mA	100mV	20 Ω	0.2/0.1
	5(40)A/5mA	5A	40A	5mA	100mV	20 Ω	0.2/0.1
	6(30)A/4mA	6A	30A	4mA	80mV	20 Ω	0.1



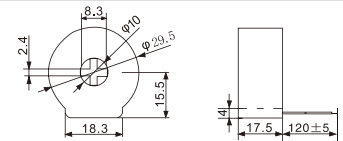
CT006

model	Ratio	Pr. Current	Max. Current	Sec. Current	Sampling voltage	Load Resistance	Class
CT006	5(30)A/5mA	5A	30A	5mA	100mV	20 Ω	0.1
	10(60)A/10mA	10A	60A	10mA	100mV	10 Ω	0.1
	10(100)A/5mA	10A	100A	5mA	50mV	10 Ω	0.1
	20(100)A/20mA	20A	100A	20mA	100mV	5 Ω	0.1



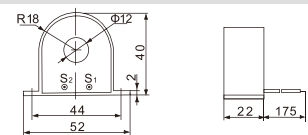
CT007

model	Ratio	Pr. Current	Max. Current	Sec. Current	Sampling voltage	Load Resistance	Class
CT007	5(30)A/5mA	5A	30A	5mA	100mV	20 Ω	0.1
	10(60)A/10mA	10A	60A	10mA	100mV	10 Ω	0.1
	10(100)A/5mA	10A	100A	5mA	50mV	10 Ω	0.1
	20(100)A/20mA	20A	100A	20mA	100mV	5 Ω	0.1



CT008

model	Ratio	Pr. Current	Max. Current	Sec. Current	Sampling voltage	Load Resistance	Class
CT008	20(100)A/20mA	20A	100A	20mA	100mV	5 Ω	0.1
	40(200)A/20mA	40A	200A	20mA	100mV	5 Ω	0.1
	20(100)A/20mA	200A	240A	100mA	100mV	5 Ω	0.2

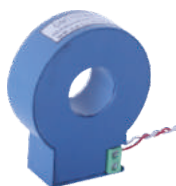
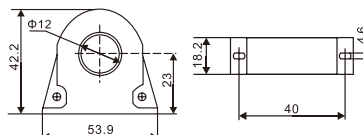


Mini CT Series



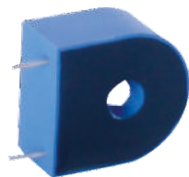
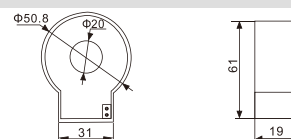
CT009

model	Ratio	Pr. Current	Max. Current	Sec. Current	Sampling voltage	Load Resistance	Class
CT009	20A/100mA	20A	40A	100mA	1000mV	10 Ω	0.2
	20(100)A/20mA	20A	100A	20mA	200mV	10 Ω	0.1
	50(200)A/25mA	50A	200A	25mA	250mV	10 Ω	0.1
	200A/100mA	200A	240A	100mA	500mV	5 Ω	0.2



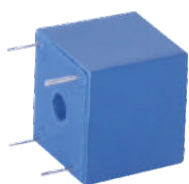
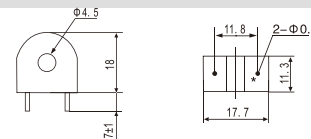
CT012

model	Ratio	Pr. Current	Max. Current	Sec. Current	Sampling voltage	Load Resistance	Class
CT012	40(200)A/20mA	40A	200A	20mA	200mV	10 Ω	0.2/0.1
	80(400)A/40mA	80A	400A	40mA	200mV	5 Ω	0.2/0.1
	400A/200mA	400A	480A	200mA	1000mV	5 Ω	0.2/0.1



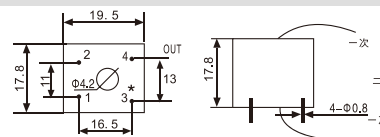
CT226A

model	Ratio	Pr. Current	Max. Current	Sec. Current	Sampling voltage	Load Resistance	Class
CT226A	5A/5mA	5A	10A	5mA	100mV	20 Ω	0.2/0.1
	5A/2.5mA	5A	20A	2.5mA	50mV	20 Ω	0.2/0.1



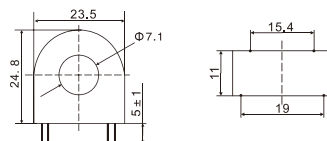
CT405

model	Ratio	Pr. Current	Max. Current	Sec. Current	Sampling voltage	Load Resistance	Class
CT405	5A/5mA	5A	20A	5mA	100mV	20 Ω	0.1
	5A/2.5mA	5A	40A	2.5mA	50mV	20 Ω	0.1



CT406

model	Ratio	Pr. Current	Max. Current	Sec. Current	Sampling voltage	Load Resistance	Class
CT406	5A/2.5mA	5A	40A	2.5mA	50mV	20 Ω	0.1/0.2
	5A/5mA	5A	20A	5mA	100mV	20 Ω	0.2
	10A/4mA	10A	40A	4mA	80mV	20 Ω	0.1
	20A/20mA	40A	48A	20mA	400mV	20 Ω	0.1

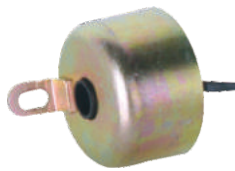
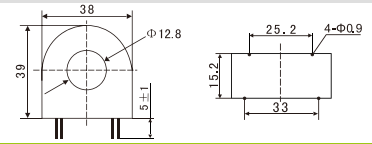


Mini CT Series



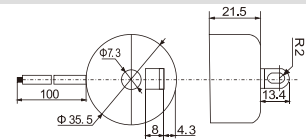
CT409

model	Ratio	Pr. Current	Max. Current	Sec. Current	Sampling voltage	Load Resistance	Class
CT409	10(100)A/10mA	10A	100A	10mA	100mV	10 Ω	0.1
	10(100)A/5mA	10A	100A	5mA	100mV	20 Ω	0.1
	20(200)A/10mA	20A	200A	10mA	50mV	5 Ω	0.1



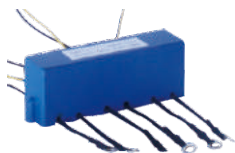
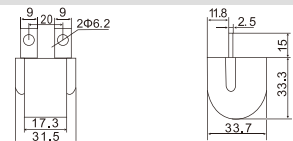
DCT-607

model	Ratio	Pr. Current	Max. Current	Sec. Current	DC immune	Load Resistance	Class
DCT-607	5(30)A/2mA	5A	30A	2mA	≥22A	25 Ω	0.1/0.2
	10(40)A/4mA	10A	40A	4mA	≥28.5A	20 Ω	0.1/0.2
	10(60)A/4mA	10A	60A	4mA	≥43A	12.5 Ω	0.1/0.2



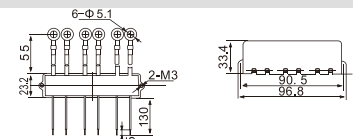
DCT-610

model	Ratio	Pr. Current	Max. Current	Sec. Current	DC immune	Load Resistance	Class
DCT-610	5(30)A/2mA	5A	30A	2mA	≥22A	25 Ω	0.1/0.2
	10(40)A/4mA	10A	40A	4mA	≥28.5A	20 Ω	0.1/0.2
	15(60)A/6mA	15A	60A	6mA	≥43A	12.5 Ω	0.1/0.2



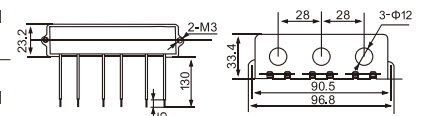
CT-301

model	Ratio	Pr. Current	Max. Current	Sec. Current	Sampling voltage	Load Resistance	Class
CT-301	1.5(6)A/5mA	1.5A	6A	5mA	100mV	20 Ω	0.1
	1.5(6)A/7.5mA	1.5A	6A	7.5mA	75mV	10 Ω	0.1

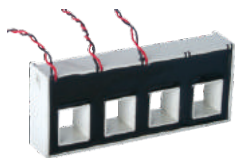


CT-302

model	Ratio	Pr. Current	Max. Current	Sec. Current	Sampling voltage	Load Resistance	Class
CT-302	10(100)A/10mA	10A	100A	10mA	100mV	10 Ω	0.1
	10(100)A/5mA	10A	100A	5mA	100mV	20 Ω	0.1

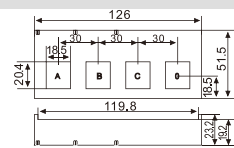


Mini CT Series



CT-303

model	Ratio	Pr. Current	Max. Current	Sec. Current	Sampling voltage	Load Resistance	Class
CT-303	100A/40mA	100A	400A	40mA	800mV	20Ω	0.2/0.5
	225A/60mA	225A	900A	60mA	1200mV	20Ω	0.2/0.5



ZCT-007

model	A current	Secondary voltage
ZCT-007	10-400mA	6-500mV

