

YUE QING HEYI ELECTRICAL CO.,LTD

ADD:ShangYanHou Village,LiuShi Town,YueQing City,ZheJiang,CHINA

TEL:86-577-62659558

FAX:86-577-62659558

contact :Mrs Bethy

E-mail:heyi@heyielectrical.com

Web:www.transformerfactory.com



RLC Series

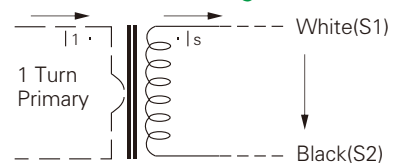


RLC range of current transformers advanced snap on body, high accuracy (up to Class 0.2S), humanization transparent cover and lead seal hole design makes the CT very easy to identify after long term use and perfect anti-stealing electricity.

Features

- Built in hinged terminal cover
- Built in transparent cover for name plate
- Wide range accuracy (3, 1, 0.5, 0.5S, 0.2, 0.2S) enables meet the worldwide requirement.
- Primary current from 5A to 5000A.

Circuit connection diagram



Applications

- Current measurement, monitoring and protection for electrical wiring and equipment.
- Current and power measurement for electric motors, lighting, air compressor, heating and ventilation system, air-condition equipment and automation-control system.
- Current, power and energy monitoring device.
- Relay protection device.

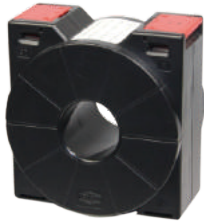
Technique Index

Electrical Parameter	
Frequency	50/60Hz
Rated Input	1A-5000A
Measuring range	5% In-120% In
Rated Output	1A,5A
Rated Voltage	0.72KV(AC)
Dielectric strength	3.0KV/1mA/1min
Insulation Resistance	DC500V/100MΩmin

Mechanical Parameter	
Case	PC /UL94-V0
Bobbin	PBT
Core	Silicon steel
Construction	Screw
Operating Temp	- 25°C ~ + 75°C
Operating Humidity	≤85%
Output Connection	Terminal

RLC Series

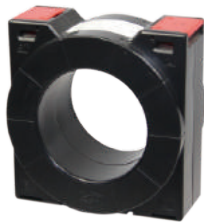
Technical parameter



RLC-30

TYPE	Ratio(A)	Burden(VA)		Rated Frequency(Hz)
		Class:0.5	Class:0.5S	
RLC-30	30/5A	2.5(4T)	5(4T)	50/60
	40/5A	2.5(3T)	5(3T)	50/60
	50/5A	2.5(2T)	5(2T)	50/60
	60/5A	2.5(2T)	5(2T)	50/60
	75/5A	2.5(2T)	5(2T)	50/60
	100/5A	2.5	5	50/60
	150/5A	3.75	5	50/60
	200/5A	5	5	50/60
	250/5A	5	5	50/60
	300/5A	5	5	50/60

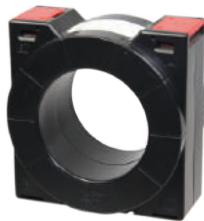
Technical parameter



RLC-50

TYPE	Ratio(A)	Burden(VA)		Rated Frequency(Hz)
		Class:0.5	Class:0.5S	
RLC-50	100/5A	2.5	5(2T)	50/60
	150/5A	3.75	5	50/60
	200/5A	5	5	50/60
	250/5A	5	5	50/60
	300/5A	5	5	50/60
	400/5A	5	5	50/60
	500/5A	5	5	50/60

Technical parameter



RLC-65

TYPE	Ratio(A)	Burden(VA)		Rated Frequency(Hz)
		Class:0.5	Class:0.5S	
RLC-65	300/5A	5	5	50/60
	400/5A	5	5	50/60
	500/5A	5	5	50/60
	600/5A	5	5	50/60
	750/5A	5	10	50/60
	800/5A	5	10	50/60
	1000/5A	10	10	50/60
	1200/5A	10	15	50/60

Technical parameter



RLC-80

TYPE	Ratio(A)	Burden(VA)		Rated Frequency(Hz)
		Class:0.5	Class:0.5S	
RLC-80	600/5A	5	5	50/60
	750/5A	5	10	50/60
	800/5A	5	10	50/60
	1000/5A	10	10	50/60
	1200/5A	10	15	50/60
	1250/5A	15	15	50/60
	1500/5A	15	15	50/60
	1600/5A	15	15	50/60

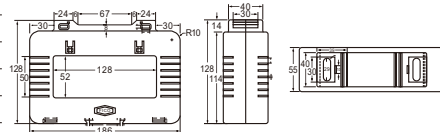
RLC Series

Technical parameter



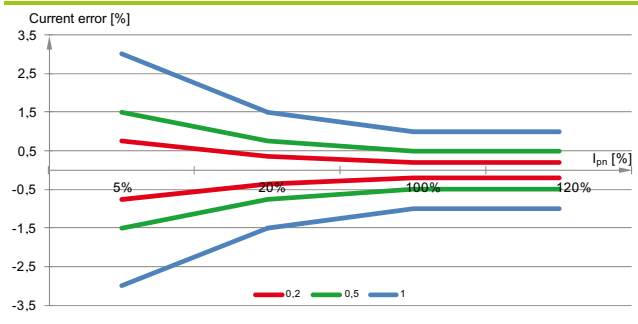
RLC-125

TYPE	Ratio(A)	Burden(VA)		Rated Frequency(Hz)
		Class:0.5	Class:0.5S	
RLC-125	1000/5A	10	15	50/60
	1200/5A	10	15	50/60
	1500/5A	15	15	50/60
	1600/5A	15	15	50/60
	2000/5A	15	20	50/60
	2500/5A	15	20	50/60
	3000/5A	15	20	50/60
	4000/5A	15	20	50/60
	5000/5A	15	20	50/60



Accuracy class characteristics:

a) classes 0.2; 0.5; 1



b) comparison of classes 0.5 and 0.5S

