

YUE QING HEYI ELECTRICAL CO.,LTD

ADD:ShangYanHou Village,LiuShi Town,YueQing City,ZheJiang,CHINA

TEL:86-577-62659558

FAX:86-577-62659558

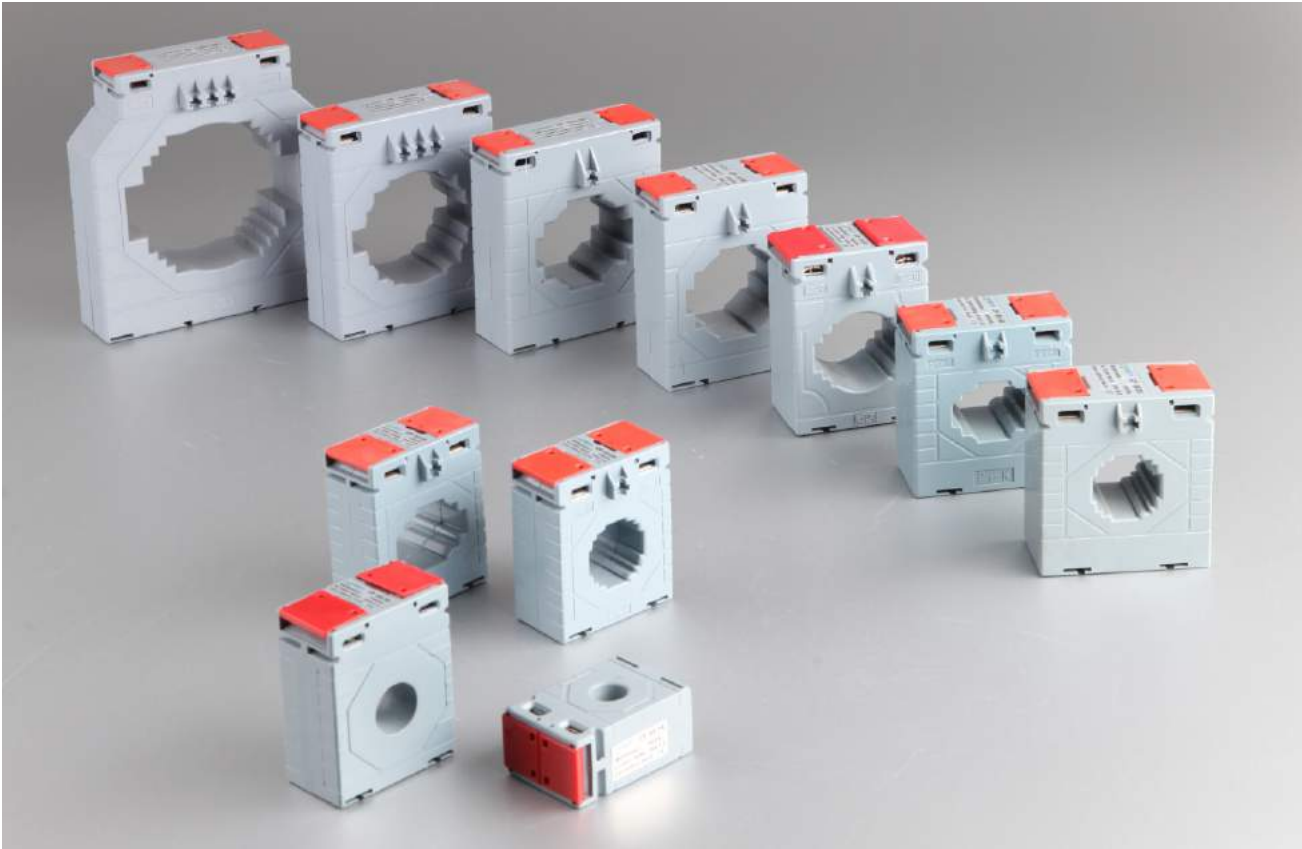
contact :Mrs Bethy

E-mail:heyi@heyielectrical.com

Web:www.transformerfactory.com



CP Series



CP range of current transformers are compact—smaller than other models with the current ratio of the transformer is small. Clamshell-style terminal cover is well protected by the second terminal. With related accessories you can use Din rail mounting a current from 5A to 3000A.

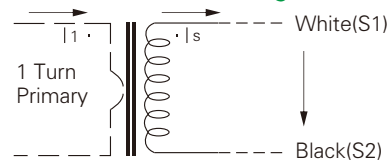
Features

- Three built in fixing methods: Panel/Din Rail/Busbar
- Built in hinged terminal cover
- Compact design
- Primary current from 5A to 3000A

Applications

- Current measurement, monitoring and protection for electrical wiring and equipment.
- Current and power measurement for electric motors, lighting, air compressor, heating and ventilation system, air-condition equipment and automation-control system.
- Current, power and energy monitoring device.
- Relay protection device.

Circuit connection diagram



Technique Index

Electrical Parameter	
Frequency	50/60Hz
Rated Input	5A-3000A
Measuring range	5% In-120% In
Rated Output	1A,5A
Rated Voltage	0.72KV(AC)
Dielectric strength	3.0KV/1mA/1min
Insulation Resistance	DC500V/100MΩmin

Mechanical Parameter	
Case	PC /UL94-V0
Bobbin	PBT
Core	Silicon steel
Construction	Screw
Operating Temp	- 25°C ~ + 75°C
Operating Humidity	≤85%
Output Connection	Terminal

CP Series

Technical parameter



CP-62/B

TYPE	Ratio(A)	Burden(VA)		Rated Frequency(Hz)
		Class:0.5	Class:1.0	
CP-62/B	5/5A	1.5	2.5	50/60
	10/5A	1.5	2.5	50/60
	15/5A	1.5	2.5	50/60
	20/5A	1.5	2.5	50/60
	25/5A	1.5	2.5	50/60
	30/5A	1.5	2.5	50/60
	40/5A	1.5	2.5	50/60
	50/5A	1.5	2.5	50/60
	60/5A	1.5	2.5	50/60
	75/5A	1.5	2.5	50/60
	100/5A	1.5	2.5	50/60
	150/5A	1.5	2.5	50/60

Technical parameter



CP-62/20

TYPE	Ratio(A)	Burden(VA)		Rated Frequency(Hz)
		Class:0.5	Class:1.0	
CP-62/20	30/5A	-	2.5(4T)	50/60
	40/5A	-	2.5(3T)	50/60
	50/5A	-	2.5(3T)	50/60
	60/5A	-	2.5(2T)	50/60
	75/5A	-	1.5	50/60
	80/5A	-	2.5	50/60
	100/5A	1.5	2.5	50/60
	150/5A	2.5	3.75	50/60
	200/5A	3.75	5	50/60

Technical parameter



CP-62/30

TYPE	Ratio(A)	Burden(VA)		Rated Frequency(Hz)
		Class:0.5	Class:1.0	
CP-62/30	30/5A	-	2.5(4T)	50/60
	40/5A	-	2.5(3T)	50/60
	50/5A	-	2.5(2T)	50/60
	60/5A	-	2.5(2T)	50/60
	75/5A	-	1.5	50/60
	100/5A	1.5	2.5	50/60
	150/5A	2.5	3.75	50/60
	200/5A	3.75	5	50/60

Technical parameter



CP-62/40

TYPE	Ratio(A)	Burden(VA)		Rated Frequency(Hz)
		Class:0.5	Class:1.0	
CP-62/40	60/5A	-	1.5(2T)	50/60
	75/5A	-	1.5(2T)	50/60
	100/5A	-	1.5	50/60
	150/5A	-	2.5	50/60
	200/5A	2.5	3.75	50/60
	250/5A	2.5	3.75	50/60
	300/5A	3.75	5	50/60

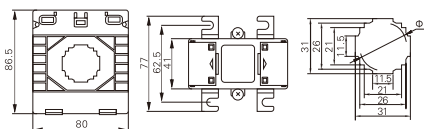
CP Series



CP-80/30

Technical parameter

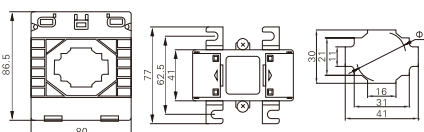
TYPE	Ratio(A)	Burden(VA)		Rated Frequency(Hz)
		Class:0.5	Class:1.0	
CP-80/30	30/5A	-	2.5(4T)	50/60
	50/5A	-	2.5(2T)	50/60
	60/5A	-	2.5(2T)	50/60
	75/5A	-	1.5	50/60
	100/5A	-	2.5	50/60
	150/5A	2.5	3.75	50/60
	200/5A	3.75	5	50/60



CP-80/40

Technical parameter

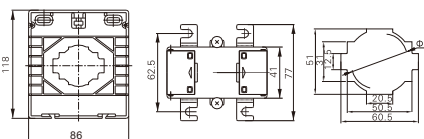
TYPE	Ratio(A)	Burden(VA)		Rated Frequency(Hz)
		Class:0.5	Class:1.0	
CP-80/40	100/5A	-	2.5	50/60
	150/5A	2.5	3.75	50/60
	200/5A	3.75	5	50/60
	250/5A	3.75	5	50/60
	300/5A	5	5	50/60
	400/5A	5	10	50/60
	500/5A	5	10	50/60



CP-86/60

Technical parameter

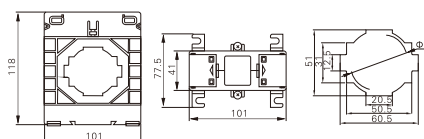
TYPE	Ratio(A)	Burden(VA)		Rated Frequency(Hz)
		Class:0.5	Class:1.0	
CP-86/60	250/5A	3.75	5	50/60
	300/5A	5	7.5	50/60
	400/5A	5	7.5	50/60
	500/5A	5	7.5	50/60
	600/5A	10	15	50/60
	750/5A	10	15	50/60
	800/5A	10	15	50/60
	1000/5A	10	15	50/60



CP-100/60

Technical parameter

TYPE	Ratio(A)	Burden(VA)		Rated Frequency(Hz)
		Class:0.5	Class:1.0	
CP-100/60	400/5A	3.75	5	50/60
	500/5A	5	10	50/60
	600/5A	10	15	50/60
	750/5A	10	15	50/60
	800/5A	10	15	50/60
	1000/5A	10	20	50/60
	1200/5A	15	20	50/60
	1500/5A	15	20	50/60
	1600/5A	15	20	50/60



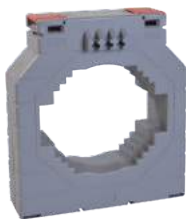
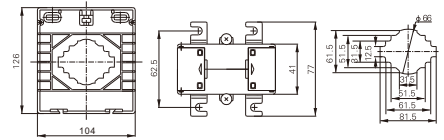
CP Series



CP-104/80

Technical parameter

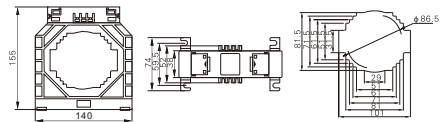
TYPE	Ratio(A)	Burden(VA)		Rated Frequency(Hz)
		Class:0.5	Class:1.0	
CP-104/80	600A	10	15	50/60
	750A	10	15	50/60
	800A	10	15	50/60
	1000A	15	20	50/60
	1200A	15	20	50/60
	1250A	15	20	50/60
	1500A	15	20	50/60
	2000/5A	15	20	50/60



CP-140/100

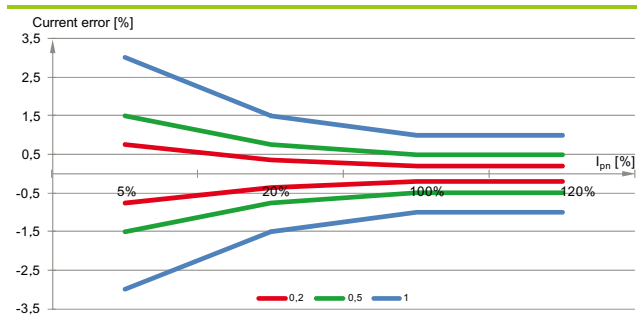
Technical parameter

TYPE	Ratio(A)	Burden(VA)		Rated Frequency(Hz)
		Class:0.5	Class:1.0	
CP-140/100	800/5A	15	20	50/60
	1000/5A	15	20	50/60
	1200/5A	15	20	50/60
	1250/5A	15	20	50/60
	1500/5A	15	20	50/60
	1600/5A	15	20	50/60
	2000/5A	15	25	50/60
	2500/5A	15	25	50/60
	3000/5A	15	25	50/60



Accuracy class characteristics:

a) classes 0.2; 0.5; 1



b) comparison of classes 0.5 and 0.5S

