

**YUE QING HEYI ELECTRICAL CO.,LTD**

ADD:ShangYanHou Village,LiuShi Town,YueQing City,ZheJiang,CHINA

TEL:86-577-62659558

FAX:86-577-62659558

contact :Mrs Bethy

E-mail:heyi@heyielectrical.com

Web:www.transformerfactory.com



**SCT Series**



SCT range of split core current transformers have been specially designed to facilitate their installation in new or already existing net works. They may be installed without opening any cable or bus-bar circuit. An internal precision resistor across the secondary winding of the ct provides a low safe voltage output.

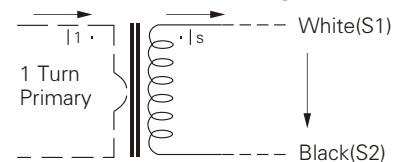
**Features**

- Split core design, safe, easy to install, portable.
- Wide inner window, allowing clamping of big cables or bus-bars
- Wide range of sizes to accommodate all the existing installations
- Wires plugs, Audio plugs, Power plugs and so on five kinds of plugs

**Applications**

- Current measurement, monitoring and protection for electrical wiring and equipment.
- Current and power measurement for electric motors, lighting, air compressor, heating and ventilation system, air-condition equipment and automation-control system.
- Current, power and energy monitoring device.
- Relay protection device.

**Circuit connection diagram**

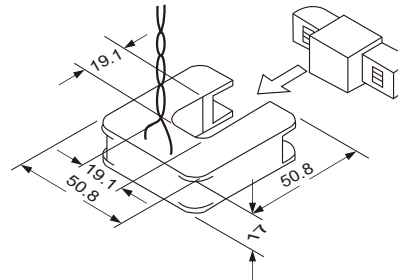


**Technique Index**

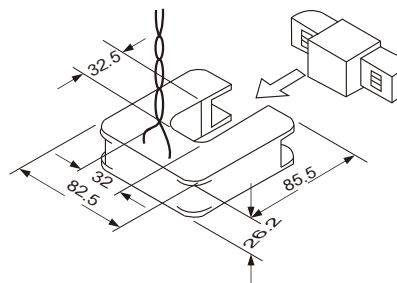
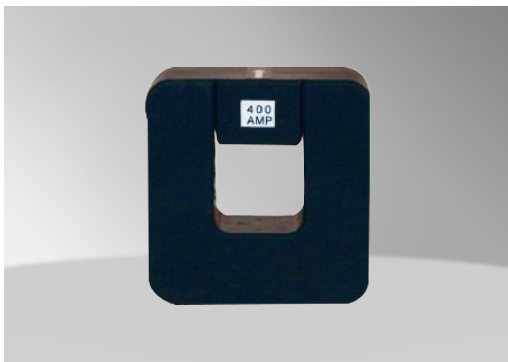
Electrical Parameter	
Frequency	50-2KHz
Rated Input	5A-1500A
Measuring range	10%In-120%In
Rated Output	0.333V(AC)or 0-500mA
Ratio	≤ ± 1.0%
Phase angle	≤ ± 60min
Dielectric strength	2.5KV/1mA/1min
Insulation Resistance	DC500V/100M Ω min

Electrical Parameter	
Case	PA / UL94-V0
Bobbin	PBT
Core	Silicon steel
Internal structure	Epoxy
Construction	Tie
Operating Temp	-25°C~75°C
Operating Humidity	≤85%
Output Connection	UI1015 20AWG Wire(twinsted wire)2.5m

**SCT Series**

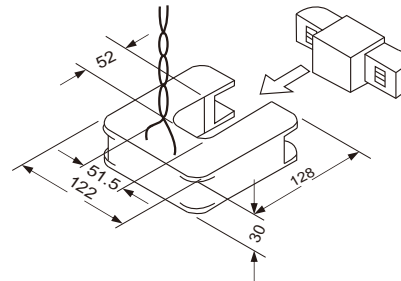


MODEL	SCT-19			
Current Ratio	50A/10mA	100A/20mA	200A/33.3mA	200A/0.333V
Primary Current(A)	50A	100A	200A	200A
Max. Current(A)	60A	120A	240A	240A
Output	10mA	20mA	33.3mA	333mV
Load Resistance( $\Omega$ )	50 $\Omega$	50 $\Omega$	20 $\Omega$	/
Class	1.0	1.0	1.0	1.0
Turns Ratio	5000:1	5000:1	6000:1	/
Protection Level	7.5V0-P	7.5V0-P	7.5V0-P	7.5V0-P
Insulation Category	CAT III			
Operating Condition	-20°C ~ +50°C, $\leq$ 85%RH, No condensation, IN-house&Any direction installable			
Storage Condition	-30°C ~ +50°C, $\leq$ 85%RH, No condensation			



MODEL	SCT-32				
Current Ratio	200A/40mA	300A/60mA	400A/40mA	600A/60mA	400A/0.333V
Primary Current(A)	200A	300A	400A	600A	400A
Max. Current(A)	240A	360A	480A	720A	480A
Output	40mA	60mA	40mA	60mA	333mV
Load Resistance( $\Omega$ )	50 $\Omega$	50 $\Omega$	50 $\Omega$	25 $\Omega$	/
Class	1.0	1.0	1.0	1.0	1.0
Turns Ratio	5000:1	5000:1	10000:1	10000:1	/
Protection Level	7.5V0-P	7.5V0-P	7.5V0-P	7.5V0-P	7.5V0-P
Insulation Category	CAT III				
Operating Condition	-20°C ~ +50°C, $\leq$ 85%RH, No condensation, IN-house&Any direction installable				
Storage Condition	-30°C ~ +50°C, $\leq$ 85%RH, No condensation				

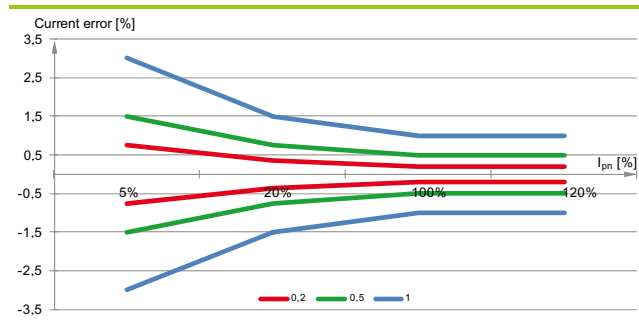
**SCT Series**



MODEL	SCT-52				
Current Ratio	500A/25mA	600A/30mA	1000A/50mA	1500A/75mA	800A/0.333V
Primary Current(A)	500A	600A	1000A	1000A	800A
Max. Current(A)	600A	720A	1200A	1200A	960A
Output	25mA	30mA	50mA	50mA	333mV
Load Resistance(Ω)	50Ω	50Ω	50Ω	25Ω	/
Class	1.0	1.0	1.0	1.0	1.0
Turns Ratio	20000:1	20000:1	20000:1	20000:1	/
Protection Level	7.5V0-P	7.5V0-P	7.5V0-P	7.5V0-P	7.5V0-P
Insulation Category	CAT III				
Operating Condition	-20°C ~ +50°C, ≤85% RH, No condensation, IN-house & Any direction installable				
Storage Condition	-30°C ~ +50°C, ≤85% RH, No condensation				

**Accuracy class characteristics:**

a) classes 0.2; 0.5; 1



b) comparison of classes 0.5 and 0.5S

