

OFO TECH

INNOVATIVE TECH SOLUTIONS





Founded in 2016, OFO Tech is an **Unmanned Aerial System (UAS)** solution and service provider catering for various engineering, intelligent and industrial applications in various sectors such as construction, energy, utilities, infrastructure, facilities, plantation, environmental, real estate and forestry.

We have recorded more than **3,500 hours** of flight time over **200,000 hectares** of land areas including a huge track of forest, a mountain and more than **15,000 km** of highways since our inception.

WE ARE UAS SOLUTION PROVIDER





KL HEADQUARTERS

Our headquarters is in **Wangsa Maju**, Kuala Lumpur. We operate nationwide and expanding our operation to East Malaysia and other countries in the Region.

BRANCH

- Kota Kinabalu, Sabah
- Jakarta, Indonesia

The Hangar



TRACK RECORD

OUR CLIENT



TRACK RECORD (2016-2017)

2016	UAV Supply & Training for Police Department of Malaysia (PDRM)
2016	UAV Supply & Training for IRDA Johor
2016	UAV Supply & Training for ICU Jabatan Perdana Menteri
2016	UAV Supply & Training for MPOB
2016	Aerial Photography & Videography for Port Klang Free Zone (PKFZ)
2016	2D UAV Topography Survey Mapping for Quarry in Pulau Salak, Sarawak
2016	Aerial Photography & Videography of Marathon Event in Selangor & Perlis
2016	UAV Inspection Demo in Petronas Terengganu Crude Oil Terminal (TCOT) Kerteh
2017	3D UAV Survey Mapping of Jacket Fabrication KDNDW for Repsol
2017	UAV Supply & Training for Johor Bahru Central Municipal Council (MBJBT)
2017	UAV Supply & Training for Forestry Department of Peninsular Malaysia (JPSM)
2017	2D UAV Survey Plantation Mapping for Felda Global Ventures (64,000 Ha)
2017	UAV Training for Jabatan Tanah Galian (PTG) Perak
2017	2D & 3D UAV Survey Mapping of 30km stretch in Limbang Lawas Sarawak

TRACK RECORD (2017-2018)

2017	2D & 3D UAV Survey Mapping of Sepilok Orang Utan Rehabilitation Centre, Sabah
2017	2D & 3D UAV Survey Mapping of Semenggoh Orang Utan Rehabilitation Centre, Sarawak
2017-2021	2D & 3D UAV Survey Mapping for Construction Monthly Progress of Lebuhraya Borneo Utara (800 km/month)
2018	UAV Supply & Training for Geomatics Department of Telekom Malaysia (TM)
2018	2D UAV Survey Mapping of Paddy Field for Jabatan Pertanian Kedah
2018	3D UAV Survey Mapping of Telekom Malaysia Tower (TM Tower)
2018	2D UAV Survey Mapping of Forest for Replanting Planning in Negeri Sembilan
2018	2D UAV Survey Mapping of Forest in Pahang
2018	2D & 3D UAV Survey Mapping for Administration area of City Council of Ampang Jaya, Selangor (15,000 Ha)
2018	2D UAV Survey Plantation Mapping for Koperasi Kemajuan Tanah Negeri Johor Berhad
2018	2D & 3D UAV Survey Mapping of Penang Hill for Slope Disaster Management
2018	2D & 3D UAV Survey Mapping of Development of Solar Farm in Tronoh Perak
2018	2D & 3D UAV Survey Mapping of Development Area in Kalianda & Bangka Island Indonesia
2018	2D UAV Survey Mapping of Rubber Estate & Tree Counting for MTIB (20,000 Ha)

TRACK RECORD (2019)

2019	2D UAV Survey Mapping for City Council of Pasir Gudang, Johor (22,000 Ha)
2019	2D & 3D UAV Survey Mapping for Lebuh raya Pantai Timur 2 (200 km / 20,000 Ha)
2019	2D & 3D UAV Survey Mapping of Development Area Bali Indonesia
2019	2D & 3D UAV Survey Mapping for Petronas Pipeline (45 km)

RECOGNITION & AWARDS



2018 Frost & Sullivan Award

*Malaysia UAV Services
Entrepreneurial Company of The Year*



2018 SME100 Award

Fast Moving Companies



EN ISO 9001:2015

*Provision of Drone and Unmanned
Aerial System (UAS)*



Remote Pilot Certification

*Certification III in Aviation (Remote
Pilot – Visual Line of Sight) by Civil
Aviation Safety Authority (CASA) of
Australia*

GROUPING

STRATEGIC PARTNERSHIP



BIMASIA



OUR CORE TEAM

Our Management Team comprised of professionals focussing on business development, system and software development, R&D; creating innovative technology solutions, programming, data processing, program execution and operation.

*Each is focussed in enhancing and striving to deliver most **cost-effective solutions** defined in our Business Value-Chain.*

Leadership



*Armi Abd Majid, B.Eng. M.Sc.
(Telecommunication Eng.)
CEO*



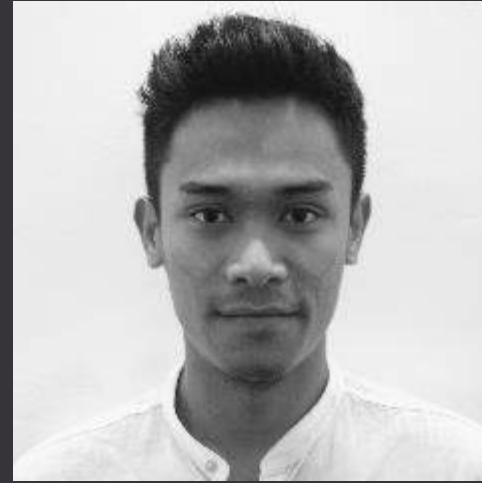
*Fadhirul Fitri, B.Eng. M.Sc.
(Mechanical Eng.)
COO*



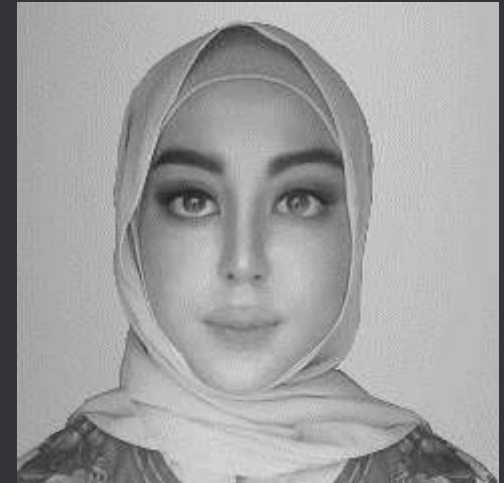
*Fauzy Rahim, B.Eng. M.Eng.
(Electronics & Electrical Eng.)
CTO*



*Mustaqim Iskhandar, B.Eng. M.Sc.
(Mechatronics Eng.)
Engineering & Procurement (E&P)*



*Amsyar Faiz, M.Sc.
(International Business)
Business Development Director*



*Mira Zuraika
Head of Finance & Marketing*



*Abd Majid Abdullah
Corporate and Business Strategy Advisor*



*Zulkifli Jamalludin
Business Development Advisor*



*Zamil Zakaria
Financial Advisor*



*Prof. Dr-Ing. Martin Mutz
Technical Advisor*



*Sr. Mohd Zahry Shaikh Abdul Rahman
Survey Advisor*



*Dato' Taufic Effendi
Aviation Advisor*

ADVISORY TEAM

Our Advisory Team composed of accomplished experts offering innovative advice and dynamic perspectives.

*The team also provide the company with **knowledge, understanding and strategic thinking** of the industry or management of the company.*

Mentorship



VISION

To be a leading High Value Company providing professional, Unmanned Aerial Systems (UAS), Data Analytics, Artificial Intelligent (AI) and IoT Services – complying to most stringent industry operating procedures and regulatory requirements.

MISSION

OFO Tech is committed to provide high quality services and cost-effective solutions through advanced UAS, Integrated Data Processing, Data Analytics, Artificial Intelligent (AI) and IoT in the most precise and timely manner – anytime, everywhere.

SCOPE OF BUSINESS

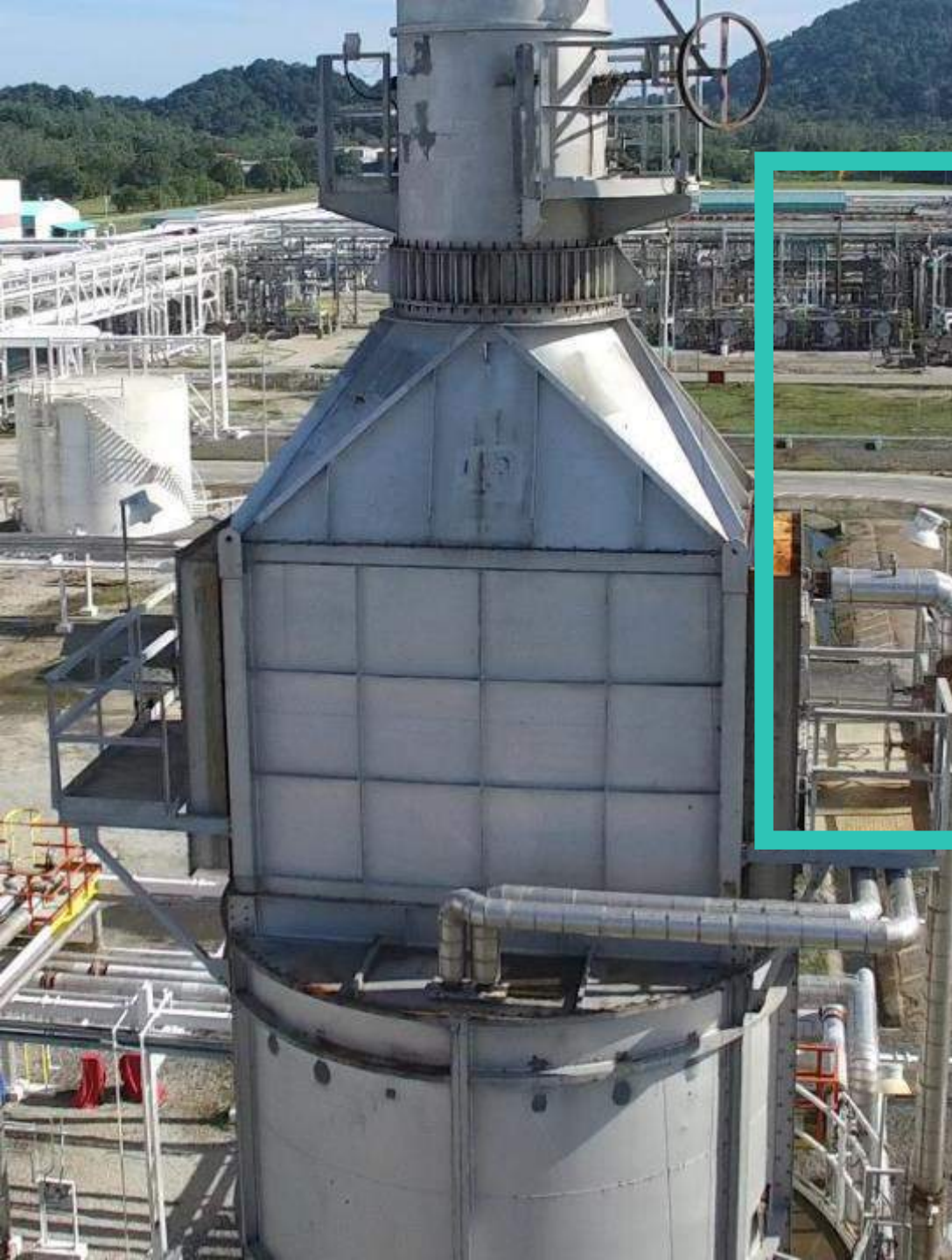
Provision of solutions and services through Comprehensive UAS, Integrated Data Acquisition Platforms, Advanced Data Processing and state of the arts Data Analytics, AI and IoT technologies

QUALITY POLICY

To ensure deliverables of quality services and cost-effective solutions using disruptive technology and enhanced processes for continuous improvement of client's experience – with no compromise on standards and regulatory requirements.



OUR METHODOLOGY



RÄISE (RAEISE) stands for
Reality Asset e-Information System.

The **RÄISE** system is OFO's own methodology on asset and incident management system which utilizes the total asset life cycle approach. This enables a complete coverage of asset life cycle from start (planning) to end (decommissioning).

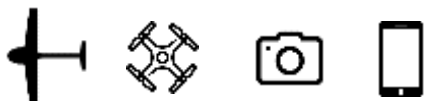
With holistic approach and high integrability at an effective cost, it can be implemented for any incident or physical asset at any phase – from the start (planning), development, construction, operation and maintenance, or at the end (decommissioning).



DATA ACQUISITION



USING



DATA PROCESSING

- ✓ Visual Imagery
- ✓ Thermal Imagery
- ✓ 2D Orthomosaic Imagery
- ✓ Digital Surface Model (DSM)
- ✓ Digital Terrain Model (DTM)
- ✓ Topography Map
- ✓ 3D Reality Mesh
- ✓ 3D Point Cloud
- ✓ 3D Augmented Reality(AR)

DATA ANALYSIS

- ✓ Geospatial Data Analysis
- ✓ Project Progress Analysis
- ✓ Slope Analysis
- ✓ Flood Analysis
- ✓ Tree Count
- ✓ Yield Estimation
- ✓ Pattern Recognition
- ✓ Anomalies Detection
- ✓ Artificial Intelligence
- ✓ Big Data Applications

DATA MANAGEMENT

- ✓ Assets Overview & Valuation
- ✓ Planning & Outlook
- ✓ Business Development
- ✓ Insurance & ROA
- ✓ Asset Integrity Analysis
- ✓ Design Construction
- ✓ Project & Progress Monitoring
- ✓ As-Built Data

Holistic

Complete
Data Feed

Total Asset
Life Cycle

All physical asset types



Asset Registry
GIS Database



Web-Based
Platform & Mobile App



End Users

Asset List

Asset Status

Scheduled
Inspection &
maintenance

Preventive
Maintenance

Maintenance
Record

Asset Integrity

Asset Tagging

Valuation

Audit & Report

Planning

Development

Construction


Operation &
Maintenance

Decommission


Infrastructure



- Roads
- Railways
- Bridges
- Road Furniture


Power/Energy
/Telco



- Hydro Dam
- Transmission Towers
- Distribution Towers
- Substations
- Poles
- Telco Towers


Agriculture/
Plantation



- Oil Palm
- Paddy
- Rubber

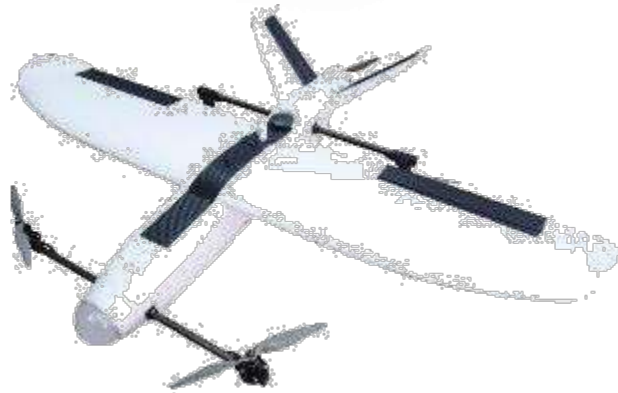

Oil & Gas



- On-/offshore Platform
- Pipelines
- Terminals
- Processing Plants



DATA ACQUISITION



UAV PLATFORM

The UAV flying platform designed for professional aerial photography and industrial applications. It is built to closely integrate with a host of powerful technologies, including the intelligent flight controller, Lightbridge transmission system, Intelligent Batteries and Battery Management system, for maximum performance and quick setup.

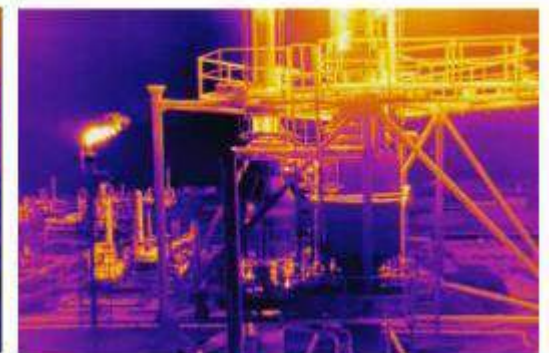
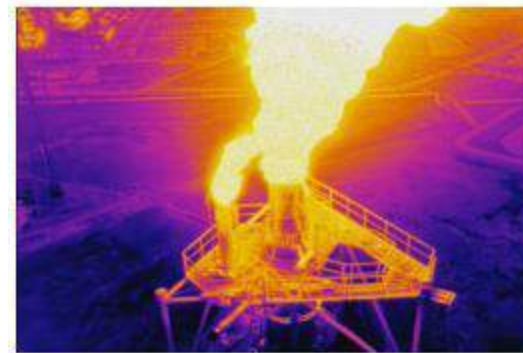
Various UAV platform are available depending on applications. Multirotor type is suitable for short distance & small scale area application. Fixed Wing type of platform is applicable for long range & large area application.

ZOOM CAMERA



The Zenmuse Z30 is one of the powerful integrated aerial zoom camera on the market with 30x optical zoom and 6x digital zoom for a total magnification up to 180x. Design for inspecting power lines, cell towers or flare tips towers, it enables you to get a detailed look at structures, wires, modules and components to detect damage. With the Zenmuse Z30's incredible zoom capabilities you can avoid any potential electromagnetic or RF interference associated with utilities and communications infrastructure.

THERMAL SENSOR



ACCURATE & PRECISE

*We are combining our solution with survey-grade GPS tools, to provide much needed accuracy of aerial surveying; improvement to **several centimeter horizontal-** and **vertical-accuracy.***

*Real-Time Kinematic (RTK) equipped drone is also being deployed to provide **accurate** and **precise** maneuverability, as well as accurate data geotagging.*

Accuracy & Precision



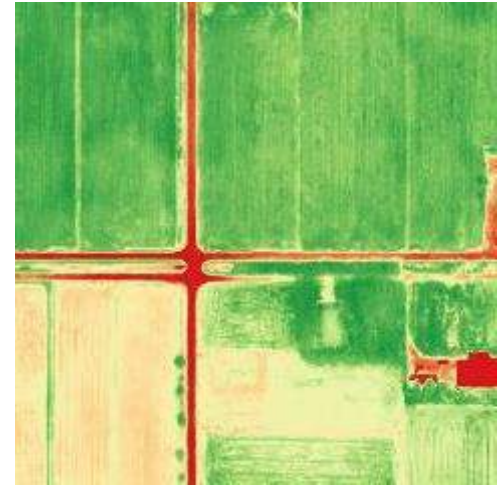


DATA PROCESSING & ANALYTICAL

AERIAL IMAGERY

2D Orthophoto

*With our fleet of GPS equipped drones, high resolution RGB, Near-Infra Red (NIR) and other special cameras and supported by powerful node-processing server with capability of **50+ processing core** and **100 processing threads**, large and high-res aerial surveys with an accuracy down to several centimetres can now be achieved and completed in minutes.*





3D REALITY

MESH



*With our solutions, we can produce even the largest and most challenging 3D models of existing real-world conditions to quickly and easily provide **context for design, construction, and operations decisions** for all types of challenging projects throughout the world, wherever and whatever the environments.*



3D POINT CLOUD

PRECISION PHOTOGRAMMETRY

*Our photogrammetric solution computes and produces **fast, cost-effective** and **high precision** 3D model from our special two-dimensional camera images.*





ARTIFICIAL INTELLIGENCE

*Our artificial intelligence computes and produces **fast, cost-effective and high precision** solutions for automatic object detection, tracking and counts.*

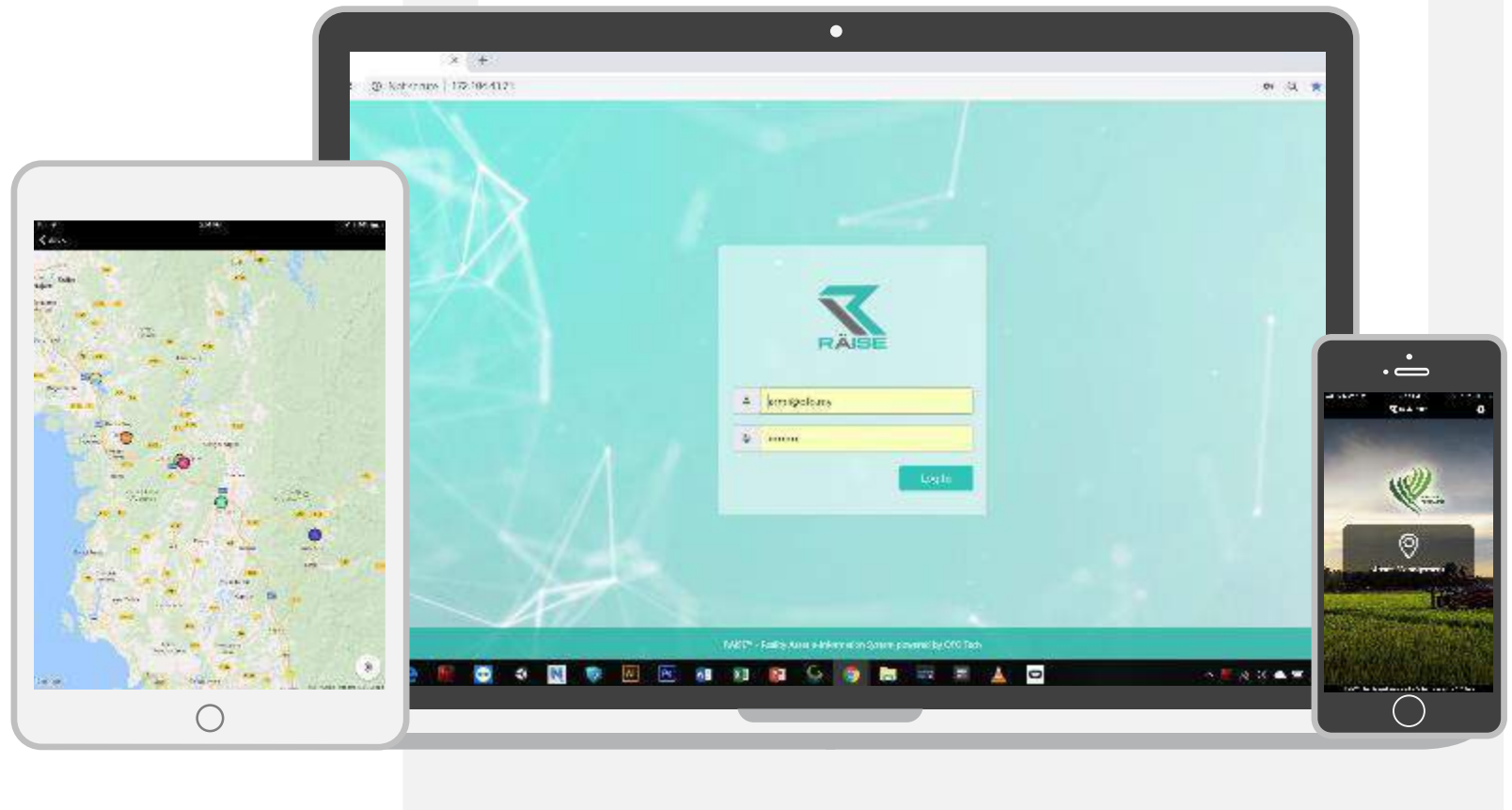


DATA MANAGEMENT

WEB-BASED SOLUTION

Our RÄISE Solution will provide asset owners of the Enterprise and Corporations opportunity to manage their assets in **Reality**, **'Real-Time'**, and **Complete** views.

The experience will be **fully integrated**, **analytical**, **'End-to-End of the Asset Management Lifecycle'**, direct to 'the fingertips', fully presentable on any media, anywhere, anytime.





SOLUTION IN OTHER INDUSTRIES



We are capable of conducting close visual and thermal inspections of high value industrial assets both on- and offshore.

Our service comply to the rigorous industrial requirement. All as a cost effective solution.



INDUSTRIAL INSPECTION OIL & GAS HAWK EYES



INDUSTRIAL INSPECTION TELECOMMUNICATION

The most effective solution to capture detail aerial imagery for industrial inspection for asset assessment. Safest method, avoid costly shutdown, scaffolding and eliminate risk of work at site.





CONSTRUCTION PROGRESS TIME-MACHINE



Our special solution will give you the ability to go to any point of the recorded progress report, time-wise and location wise. Data analysis presentation and study is now made easier than ever.

*Progress of project is made **visible** and **transparent** between all the project stakeholders.*

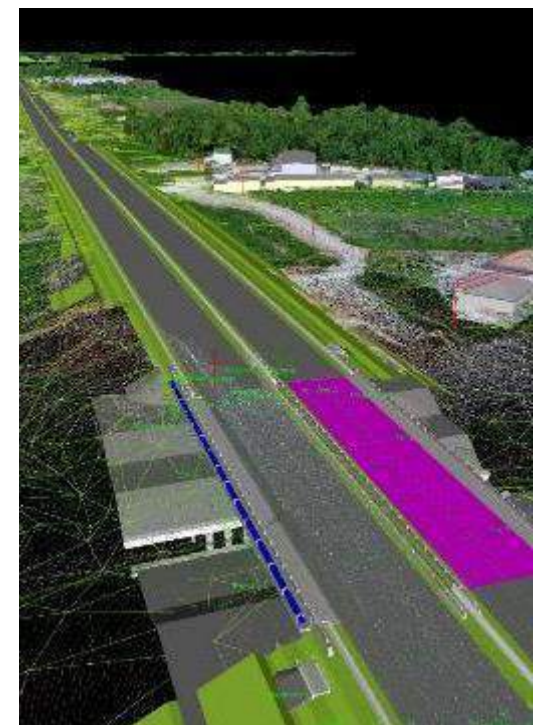
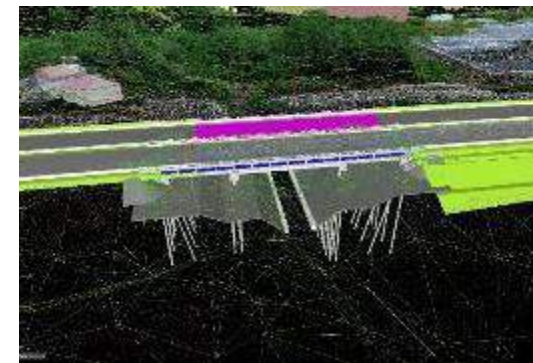
Reality Monitoring



With our solutions, it is now possible to **predict clashes, discrepancy** within the construction data and reality model.

Every single issues that about to occur will be notified well before its occurrence. This **save cost, time** and **unnecessary frustration**.

CONSTRUCTION PROGRESS REPORT





CITY COUNCIL MANAGEMENT
THE BEST SOLUTION FOR EFFECTIVE CITY MANAGEMENT



AGRICULTURE

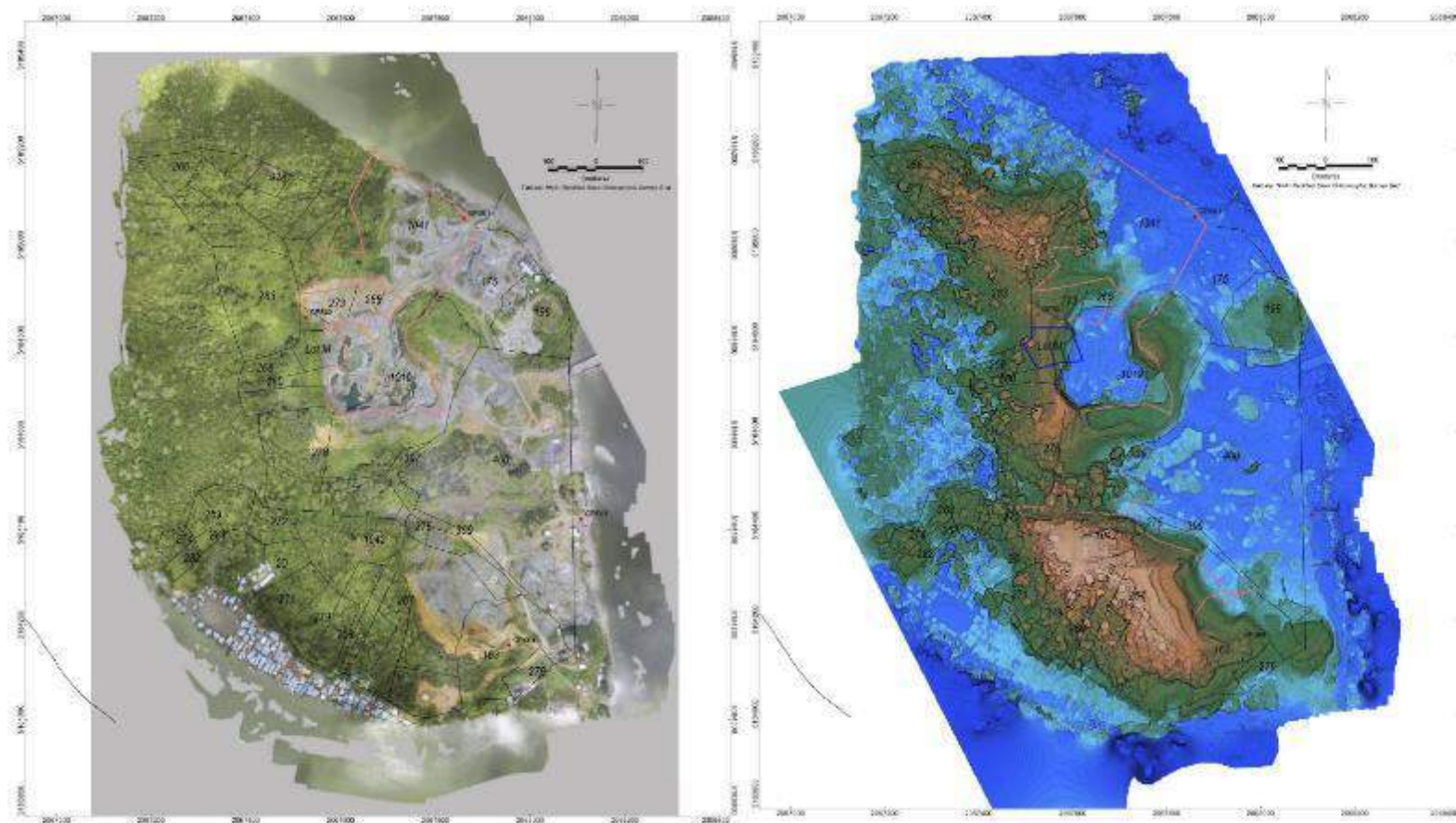


AGRICULTURE YIELD GROWTH

Our services will give a new perspective, making aerial mapping & monitoring easier, seeing the unseen, surveillance and intelligent gathering more efficient than ever.

*Regardless of the surrounding area, our fully integrated solution of special camera, UAV, ground control apps and **highly-skilled technical team** will have your eyes up in the air giving real-time information and view.*

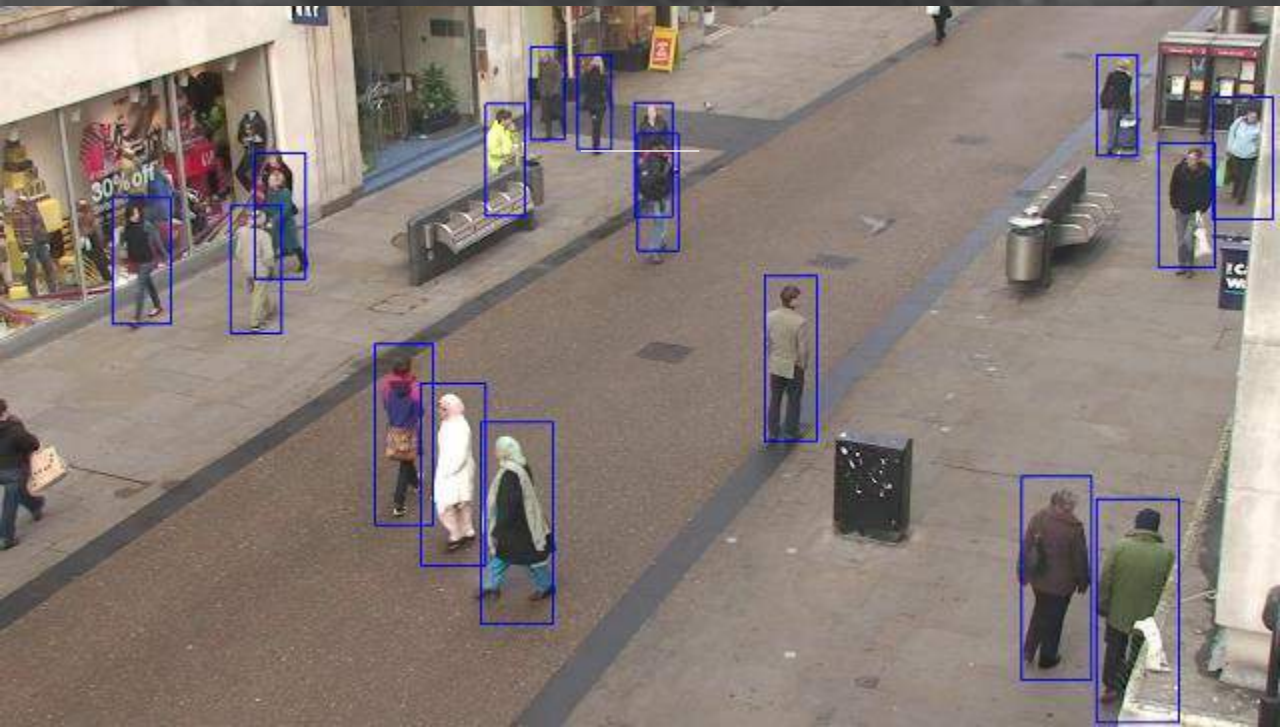
Tree counting, land used management, crop health and condition are now well managed and more efficient.



MINING PRECISION SURVEY

Our services will give a new perspective, making aerial mapping of mining area easier, seeing the unseen, surveillance and intelligent gathering more efficient than ever.

High precision topography data can be acquired in cost & time effective with the combination of UAV technology & land survey. Volume calculation can be made for profit estimation.



SECURITY SURVEILLANCE

With our UAS which are able to fly for long endurance operation ; more than 2 hours flight time, covering more than 100 km per flight, they are suitable for security and surveillance purpose.

*Regardless of the surrounding area, our fully integrated solution of special sensors, UAV, ground control apps and **highly-skilled technical team** will have your eyes up in the air giving real-time information and view.*

Our artificial intelligence system will give a new perspective, making object detection easier, seeing the unseen, surveillance and intelligent gathering more efficient than ever.

Long Endurance Operation



THERMAL NIGHT INSPECTION

OWL EYES

Our services will give a new perspective, making aerial inspections easier, seeing the unseen, surveillance and intelligent gathering more efficient than ever.

*Regardless of the surrounding area, our fully integrated solution of special camera, UAV, ground control apps and **highly-skilled technical team** will have your eyes up in the air giving real-time information and view.*



NIGHT
VISION

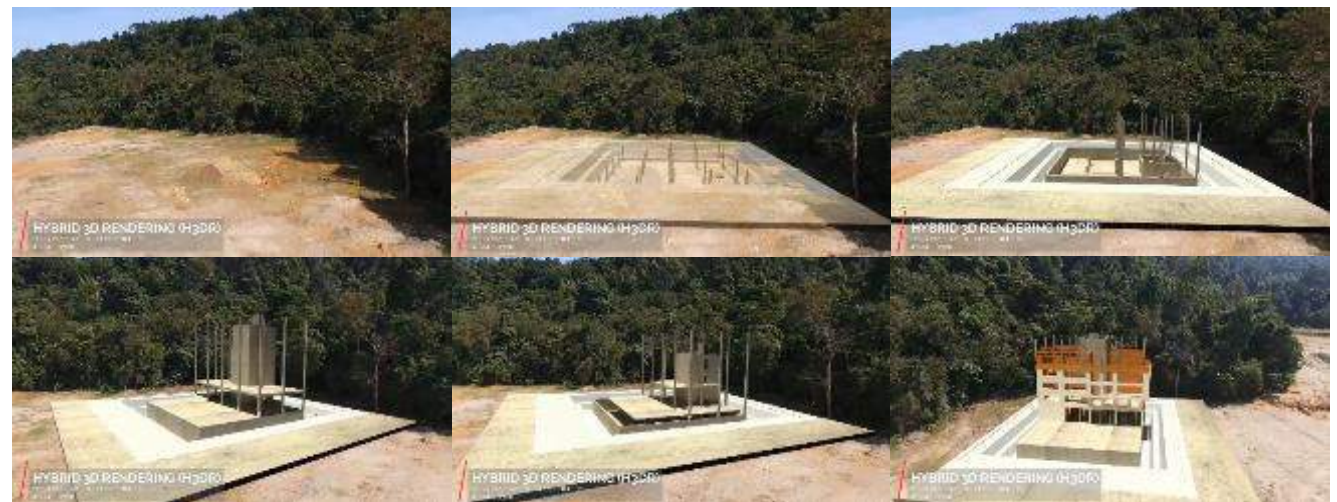


Night Operation

H3DR SOLUTION

Our **Hybrid 3D Rendering (H3DR)** Solution will render an **Augmented Reality** and Actual Footage and Environment with structural designs and architect visualization beyond imagining.

The Solution will enable seeing **ideas, conceptualization** to **design, modelling, implementation** and **realization**.



UAS TRAINING

Since our inception, we've helped several Government Agencies to break into the drone world with our **customized training programme**, both theoretical and practical hand-on training.

We also provide consultancy and other technical support services.





BENEFITS & ADVANTAGES

Cost-Effective against conventional methods.



Timely. Near Real-time data acquisition.



Low risk. Low human labor dependency.



Data integration with existing database.



Mobile and accessible for on-site assessment.

Highly Efficient data acquisition with huge area coverage per deployment.



Complete & Comprehensive data. No blind spots.



Total Asset Life Cycle Approach. Complete coverage of asset from cradle to grave.



THANK YOU

OFO Tech Sdn. Bhd.
(Reg. No. 1191464-T)

Principal Office

21-2, Jalan Wangsa Delima 10,
Wangsa Maju,
53300 Kuala Lumpur

Branch (Sabah)

H-8-10 Aeropod Commercial Square,
Jalan Keapayan,
88200 Kota Kinabalu, Sabah

Branch (Indonesia)

Satrio Tower, 16th Floor,
Jl.Prof. DR.Satrio,
Blok C4 No.5 Jakarta Selatan,
12950 Indonesia

Key Contact

Muhamad Armi Abdul Majid
Tel. No.: 017-667 0003
E-mail: armi@ofo.my